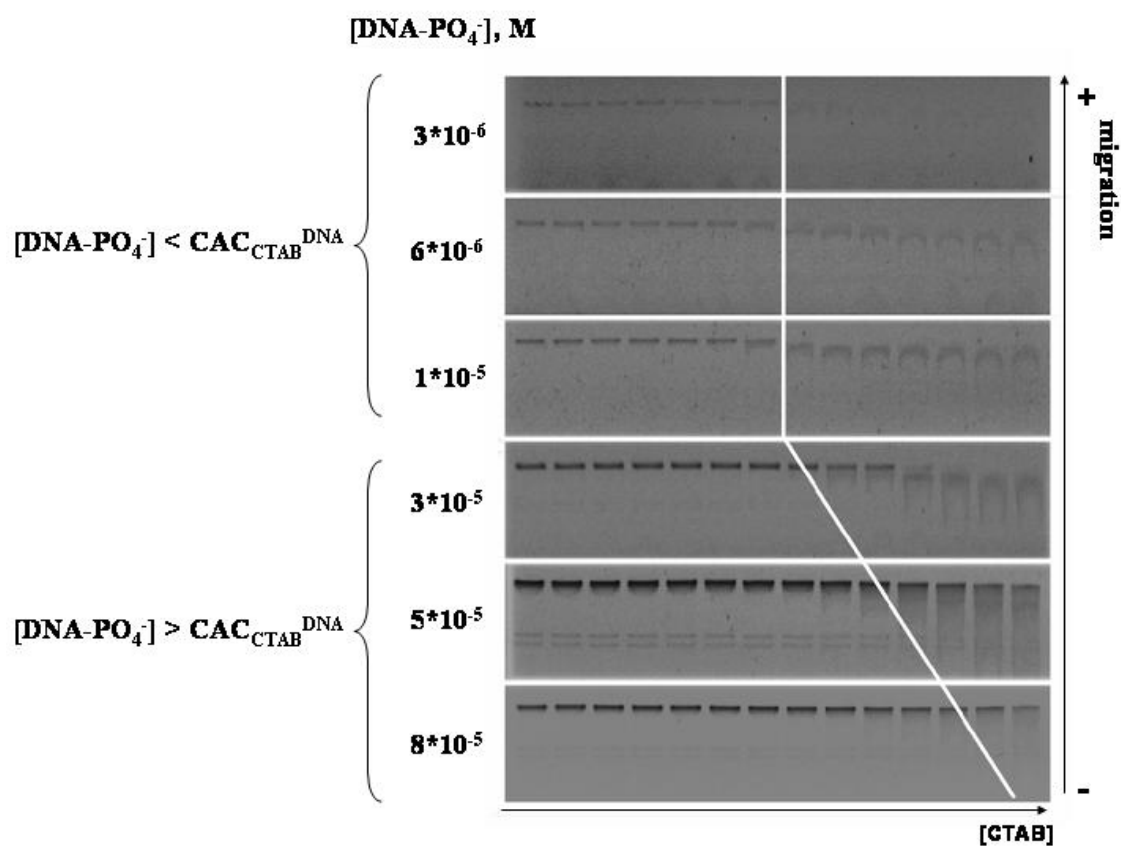


Supporting Information Available



Influence of CTAB on the electrophoretic properties of DNA on the agarose gel at different $[\text{DNA-PO}_4^-]$.

The CTAB concentrations from left to right are: 0M; $5 \cdot 10^{-6}$ M; $7.5 \cdot 10^{-6}$ M; $1 \cdot 10^{-5}$ M; $1.5 \cdot 10^{-5}$ M; $2 \cdot 10^{-5}$ M; $3 \cdot 10^{-5}$ M; $4 \cdot 10^{-5}$ M; $5 \cdot 10^{-5}$ M; $6 \cdot 10^{-5}$ M; $7 \cdot 10^{-5}$ M; $8 \cdot 10^{-5}$ M; $9 \cdot 10^{-5}$ M; $1 \cdot 10^{-4}$ M. 25°C in 30 mM Tris/HCl buffer.