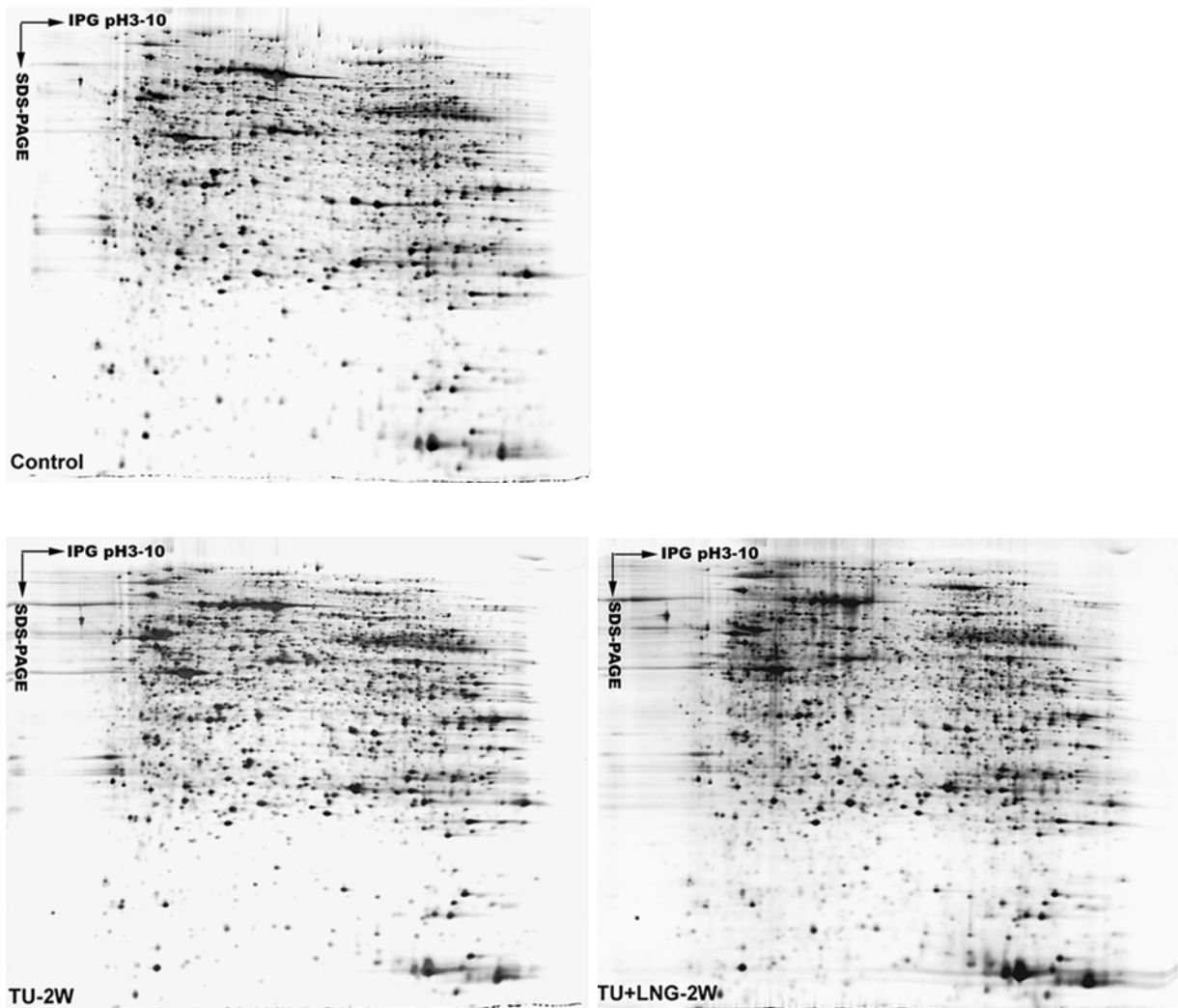


Supplemental Figure



Two-dimensional electrophoresis (2-DE) gels of the testis lysate from normal subjects, and from the subjects 2 weeks after TU treatment, and from the subjects 2 weeks after TU+LNG treatment (A). Proteins were extracted and separated by two-dimensional polyacrylamide gel electrophoresis and detected by silver staining.