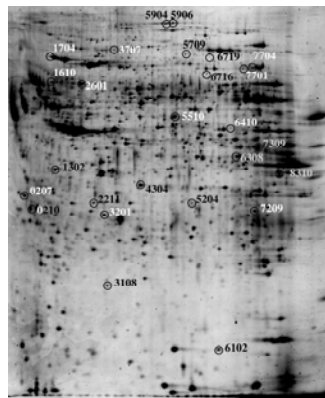


(Fig 1)

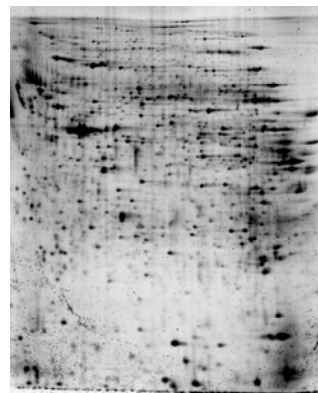
17h



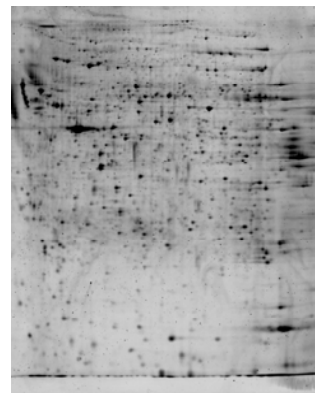
(Fig 2)



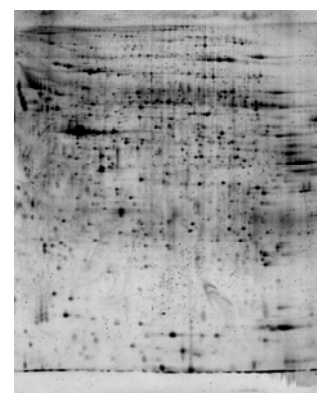
(Fig 3)



(Fig 4)

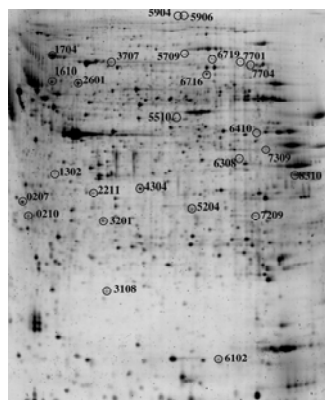


(Fig 5)

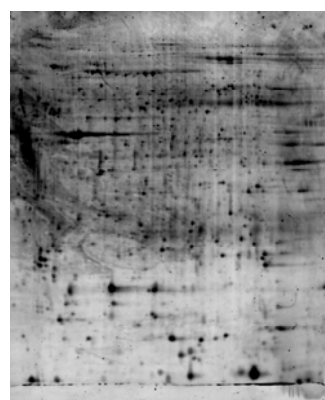


(Fig 1)

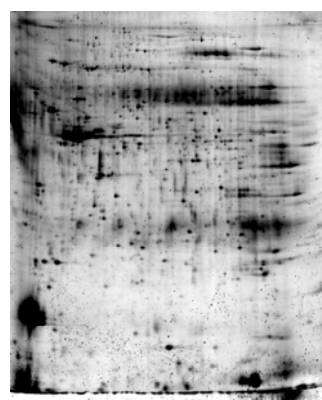
24h



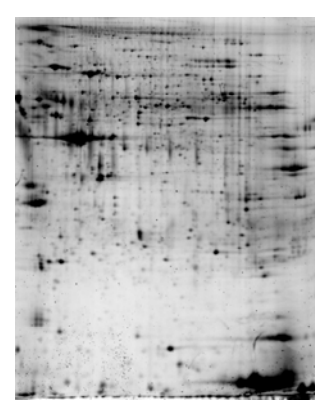
(Fig 2)



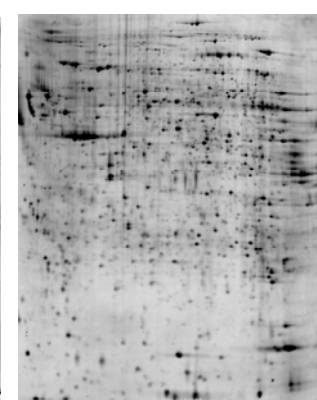
(Fig 3)



(Fig 4)



(Fig 5)



Supplementary Figure 2-DE gels of intestinal proteome of premature piglets receiving and enteral formula feeding for 8h, 17h, 24h and without enteral feeding. Intestinal proteins were extracted and resolved with 2-DE with 18cm pH 3-10 NL strips and 12.5% PAGE gels and visualized with SYPRO Ruby stain.