

Supporting Information

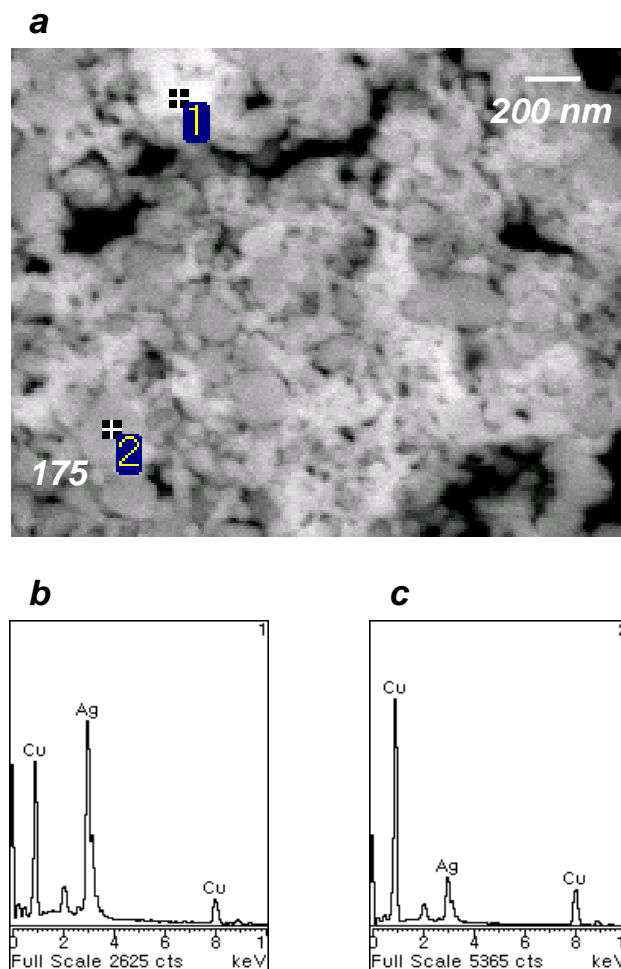


Figure S1. a) The back scattered images and EDS analysis of Cu:Ag = 3:1 mixed film. The EDS analysis obtained from b) point 1 of bright area and c) point 2 of dark area is shown.

Figure S1 clearly indicates that the brighter smaller particles are Ag, whereas the darker larger particles are Cu. As expected, the Ag particles are mainly located at the inter-particle interstices surrounding the Cu particles.