

Supporting Information

Adsorption and Simultaneous Dechlorination of PCBs on GAC/Fe/Pd: Mechanistic Aspects and Reactive Capping Barrier Concept

HYEOK CHOI¹, SHIRISH AGARWAL², SOUHAIL R. AL-ABED^{*,1}

¹ *National Risk Management Research Laboratory, U.S. Environmental Protection Agency, 26 W. Martin Luther King Dr., Cincinnati, OH 45268, USA*

² *Pegasus Technical Services, Inc, 46 East Hollister Street, Cincinnati, OH 45221, USA*

*Corresponding author phone: (513) 569-7849; e-mail: al-abad.souhail@epa.gov.

Environmental Science and Technology

August 6, 2008

Contents:

- ❖ FIGURE S1. ESEM image of GAC impregnated with Fe/Pd bimetallic nanoparticles.
- ❖ FIGURE S2. Evolution of adsorption of 2-ClBP to AC phase, transformation of the adsorbed 2-ClBP to BP, and partitioning of the formed BP between liquid and AC phases over time in (a) GAC and (b) RAC at the highest loading of 100 g/L.
- ❖ FIGURE S3. Evolution of 2-ClBP and BP concentration in liquid phase in the presence of GAC mixed with individual 2-ClBP and BP.

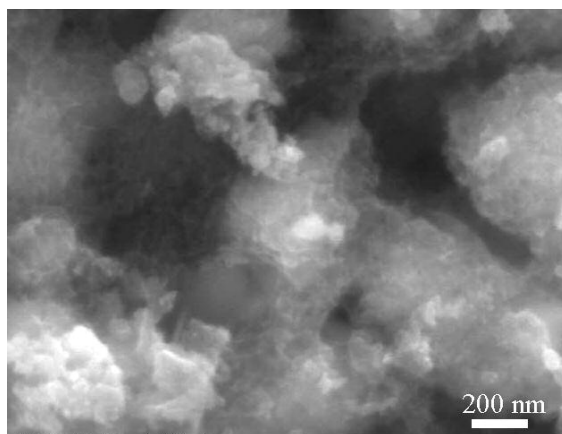


FIGURE S1. ESEM image of GAC impregnated with Fe/Pd bimetallic nanoparticles.
The porous structure of GAC was covered by the Fe/Pd matrix.

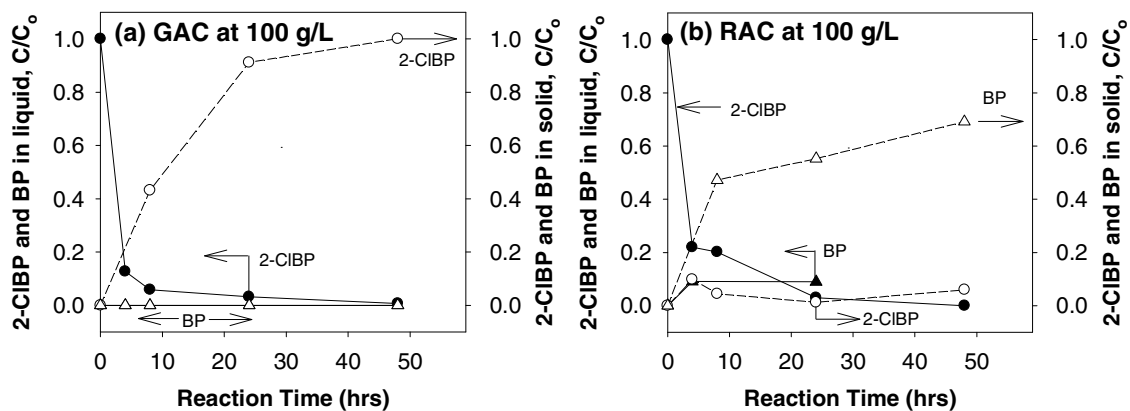


FIGURE S2. Evolution of adsorption of 2-CIBP to AC phase, transformation of the adsorbed 2-CIBP to BP, and partitioning of the formed BP between liquid and AC phases over time in (a) GAC and (b) RAC at the highest loading of 100 g/L.

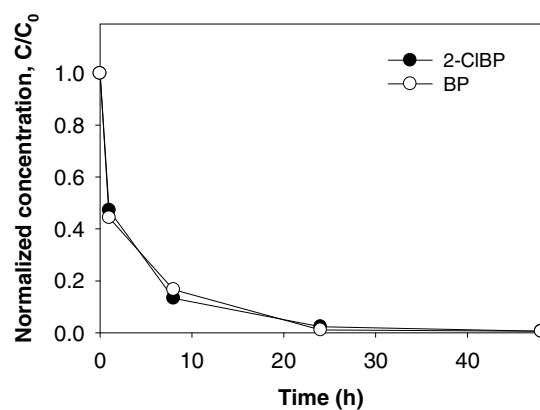


FIGURE S3. Evolution of 2-CIBP and BP concentration in liquid phase in the presence of GAC mixed with individual 2-CIBP and BP. This shows no considerable preference for adsorption between 2-CIBP and BP to GAC.