

Supporting information available

This section contains the following items:

Figure S1. Determination of the amount of GSLs captured on aoGNP by HPAE-PAD method

Table S1. Amount of GSLs blotted on GCNP determined by HPAE-PAD analysis

Figure S1. Determination of the amount of GSLs captured on aoGNP by

HPAE-PAD method

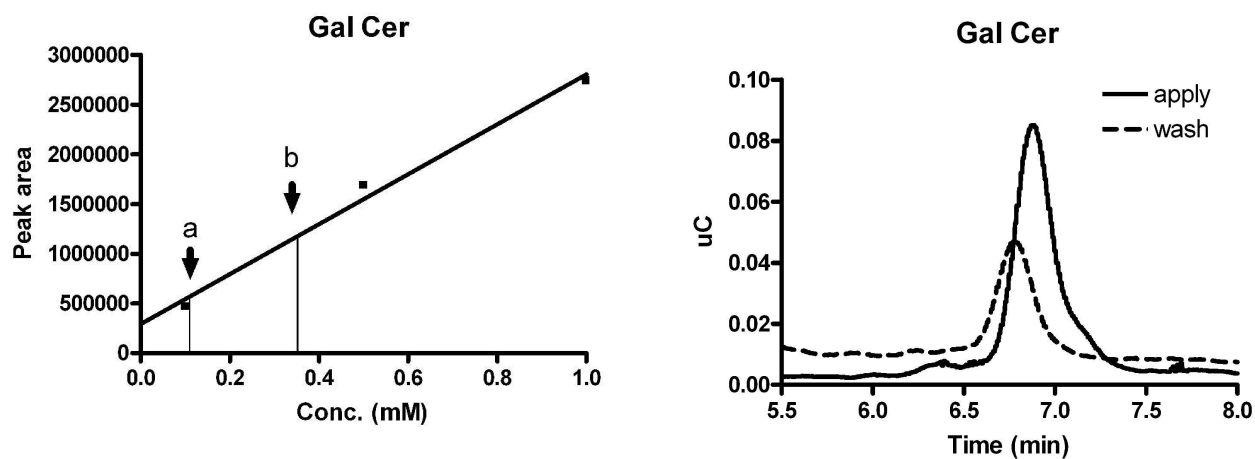
(experimental details are described in the main text “experimental section”)

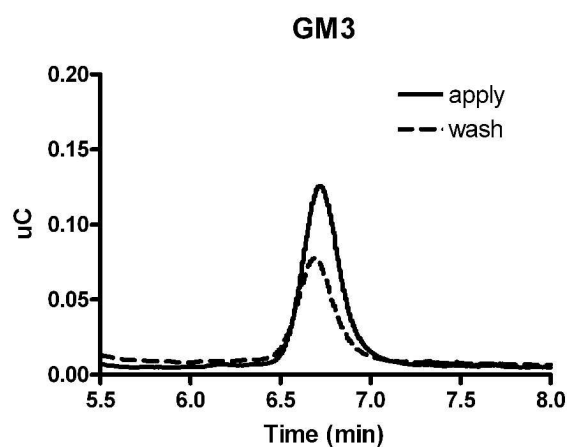
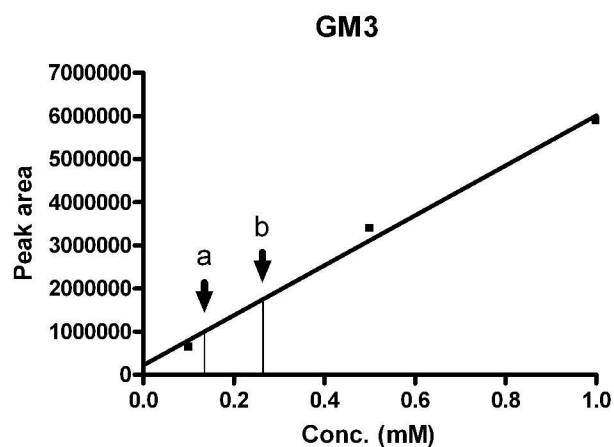
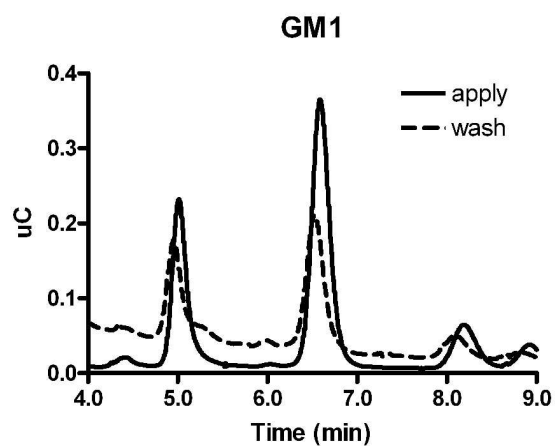
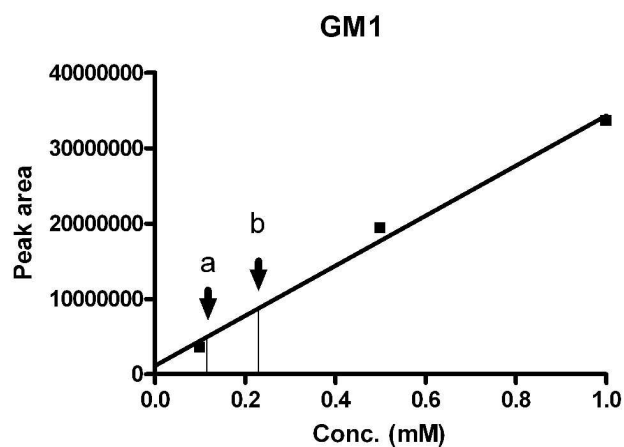
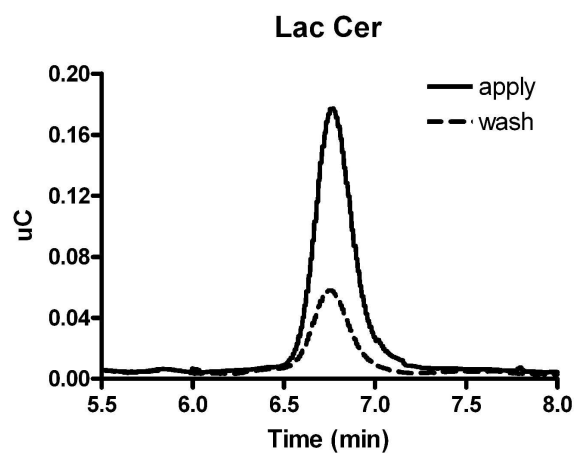
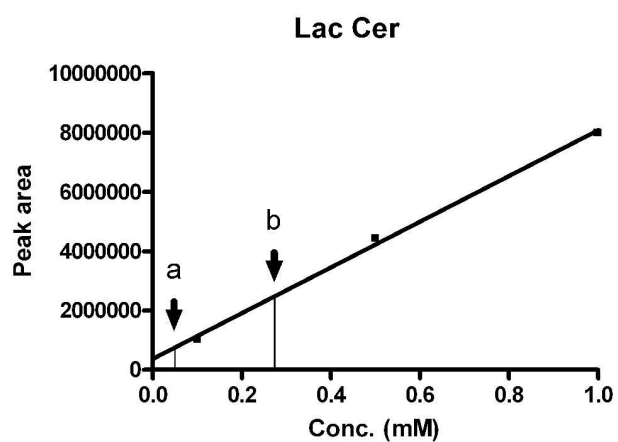
Left, calibration curves for each GSLs (x axis, concentration of GSLs; y axis, peak area).

The differences between a (wash, filtrate after GSLs-enrichment on GNP) and b (apply, GSLs before subjecting glycoblotting) indicates the amount of GSLs enriched on GNP.

Right, analyzed profile at the time point a (wash) and b (apply)

Running buffer; 100 mM NaOH aq. 1 mL/min





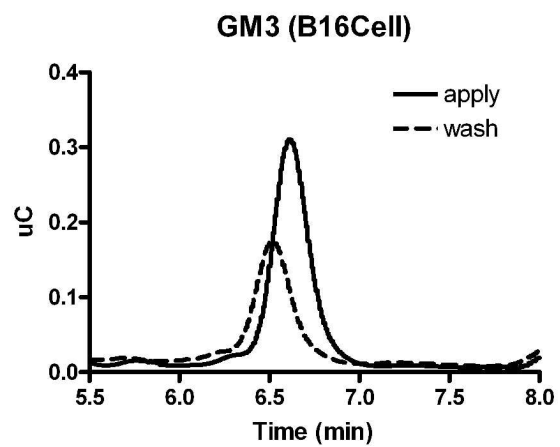
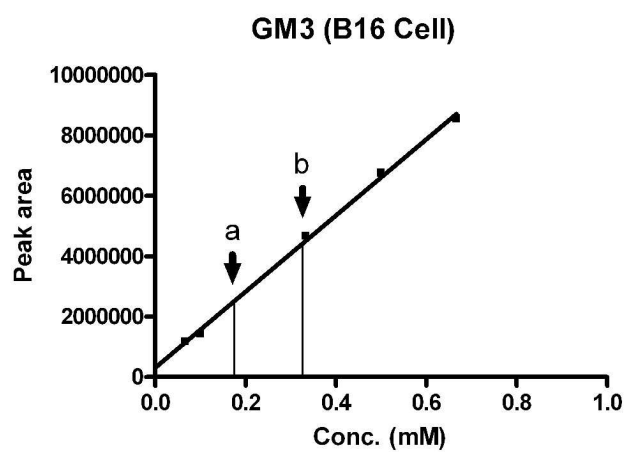


Table S1. Amount of GSLs blotted on GCNP determined by HPAE-PAD analysis

	GSLs from B16 cell	GM3	GalCer	LacCer	GM1
detected	7.55 nmol	6.50 nmol	12.5 nmol	11.5 nmol	5.74 nmol
Yield of the reaction (%)	51	44	84	75	39

.the yield is calculated based on the aminooxyl functional group dispalyed on GNP.

