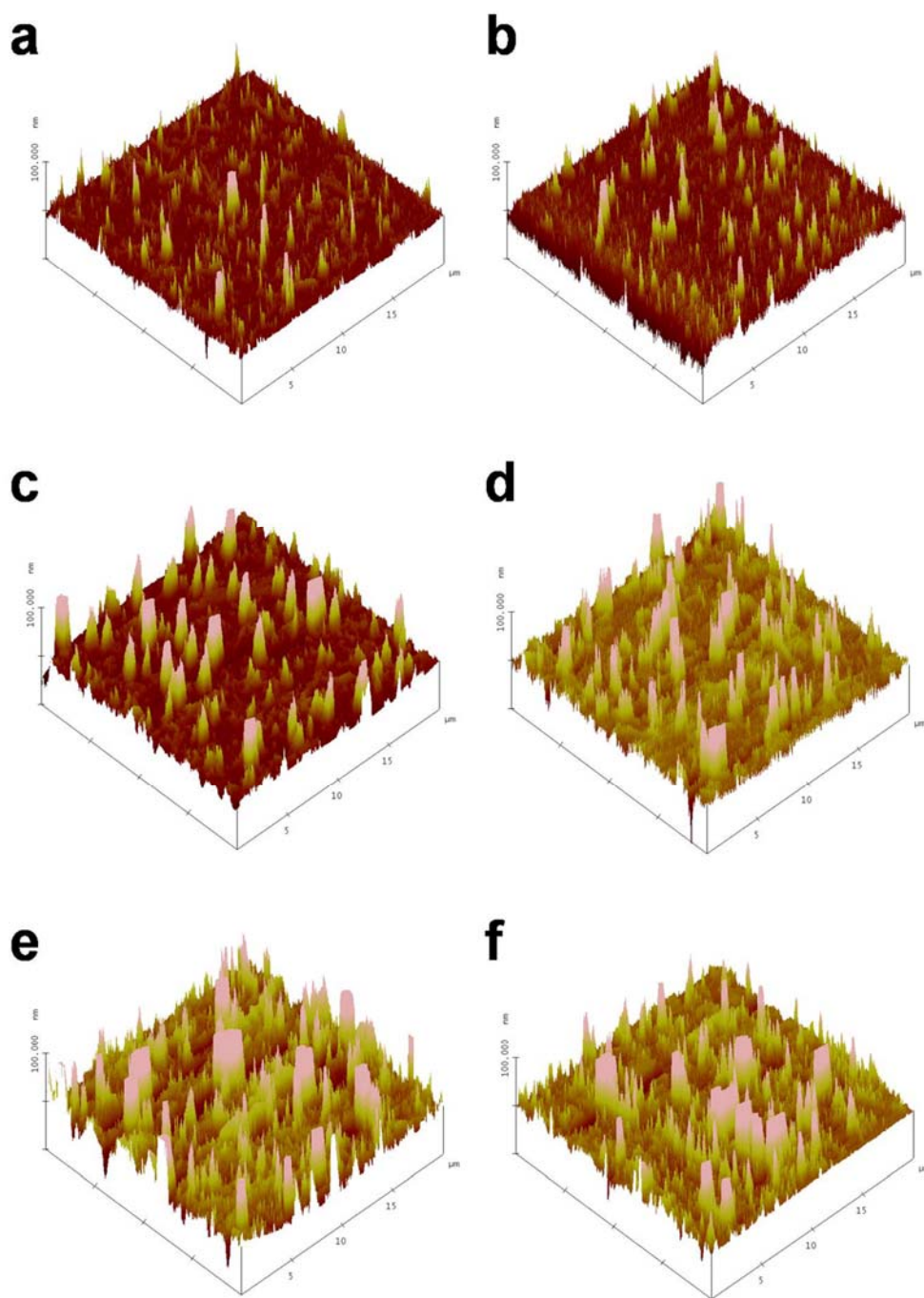


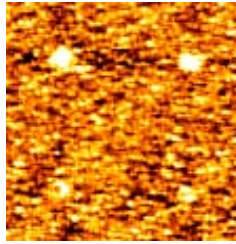
## SUPPORTING INFORMATION

**Figure S1.**



Representative tapping mode AFM images for increasing numbers of 10 mM MHA-ethanol drops on flat (RMS roughness <1.3 nm) Si<sub>3</sub>N<sub>4</sub> substrates. (a) 1 drop. (b) 2 drops. (c) 3 drops. (d) 4 drops. (e) 5 drops. (f) 6 drops. Scan area is 20 μm × 20 μm. Scan frequency was 1.0 Hz with 512 samples per line.

**Figure S2.**



AFM topography image of sub-100 nm features produced by tips inked with one drop of 0.5 mM MHA-ethanol solution. The diameters of top and bottom row features are 90 and 75 nm, respectively.