

Supporting Information

Morphological Changes from Silica Tubules to Hollow Spheres

Controlled by the Intermolecular Interactions within Block

Copolymer Micelle Templates

*Hyemin Lee and Kookheon Char**

Contribution from the School of Chemical and Biological Engineering,
Interdisciplinary Program in Nano-Science & Technology,
Center for Functional Polymer Thin Films,
Seoul National University,
San 56-1, Shillim-dong, Kwanak-gu, Seoul 151-744, Korea

Figure S1. Size distribution of hollow spheres and tubules characterized by TEM. Almost equal number of objects (~ 100) was counted for each case and the number fraction is presented for hollow spheres and tubules.

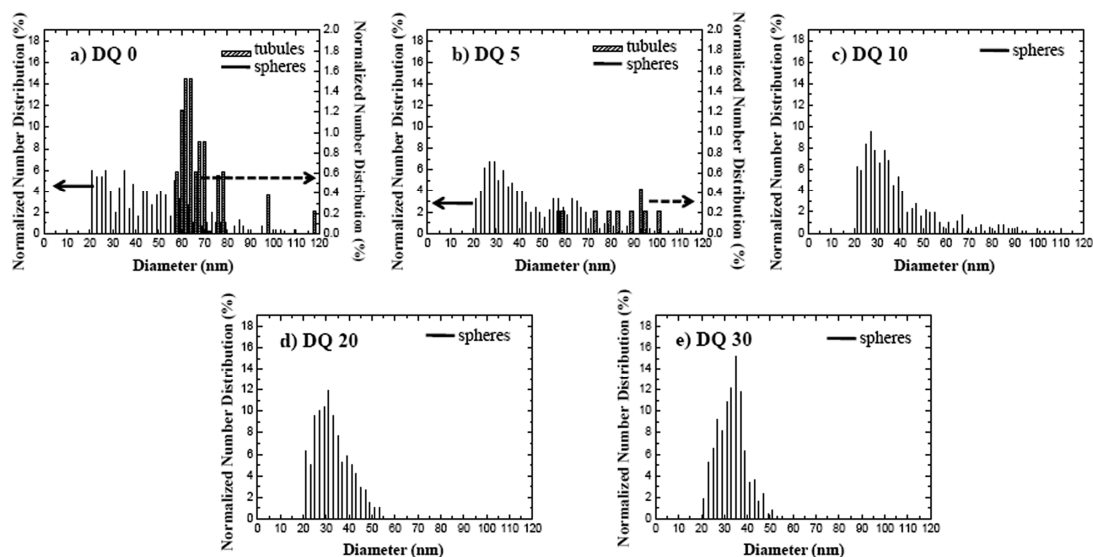


Figure S2. Size distribution of hollow tubules and spheres, which were obtained by increasing the ethanol content, characterized by TEM. Almost equal number of objects (~ 100) was examined for each case.

