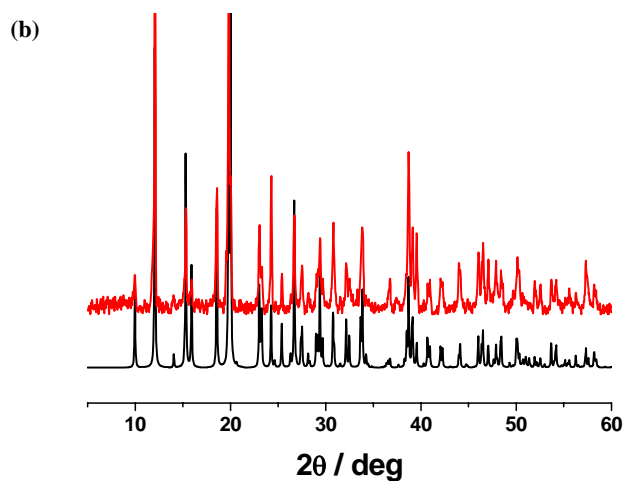
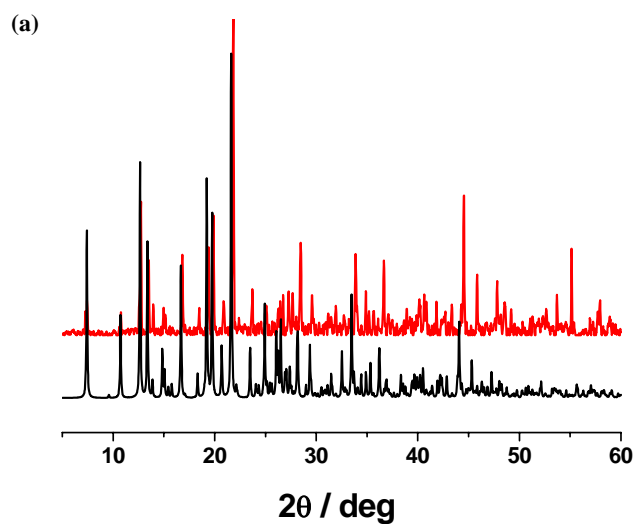


Figure S1 Simulated (black) & experimental (red) XRPD data for the starting reagent H_4L^I . The X-ray crystallographic data of H_4L^I was reported by A. Uchida, M. Hasegawa and H. Manami in *Acta Cryst.* **2003**, C59, o435-o438.



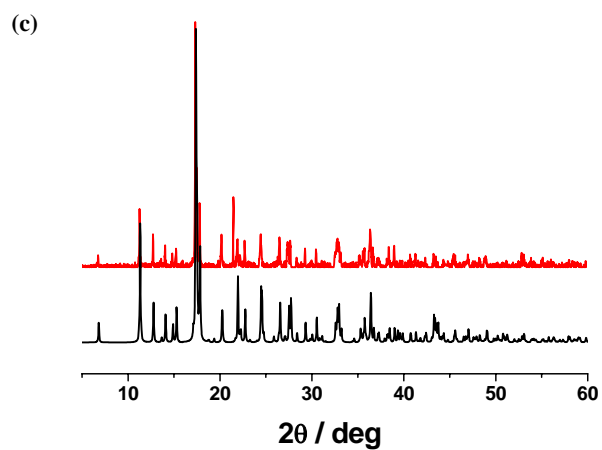


Figure S2 Simulated (black) & experimental (red) XRPD data for **1** (a), **2** (b) and **3** (c).

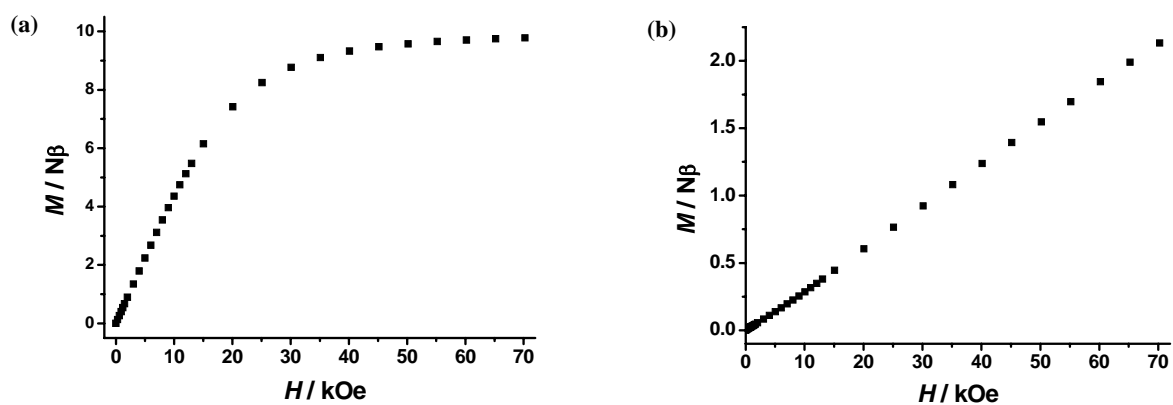


Figure S3 The magnetization at 2 K for **1** (a) and **2** (b).