

Supporting Information for: **An Improved Localized Surface Plasmon Resonance**

**Immunoassay with Gold Bipyr amid Substrates** by Seunghyun Lee, Kathryn M.

Mayer, and Jason H. Hafner

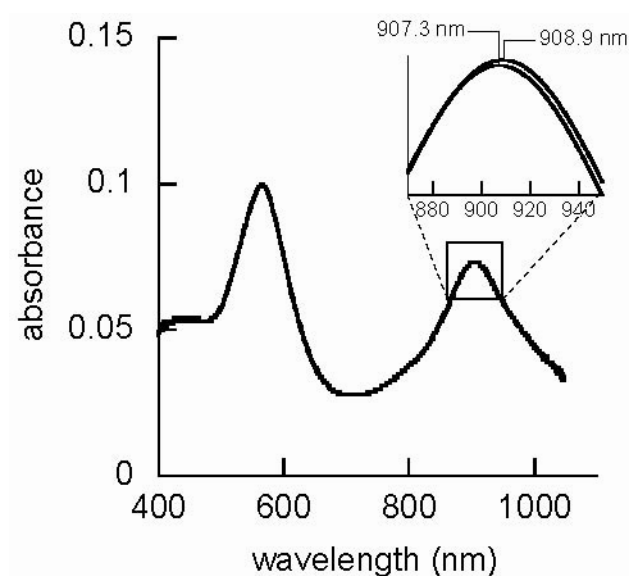


Figure S1. Endpoint spectra from the LSPR immunoassay. Spectra of the bipyr amid film before and after the target antibody exposure (see Figure 5) are plotted on the main axis. The inset shows a magnified view of the fits to the peak.

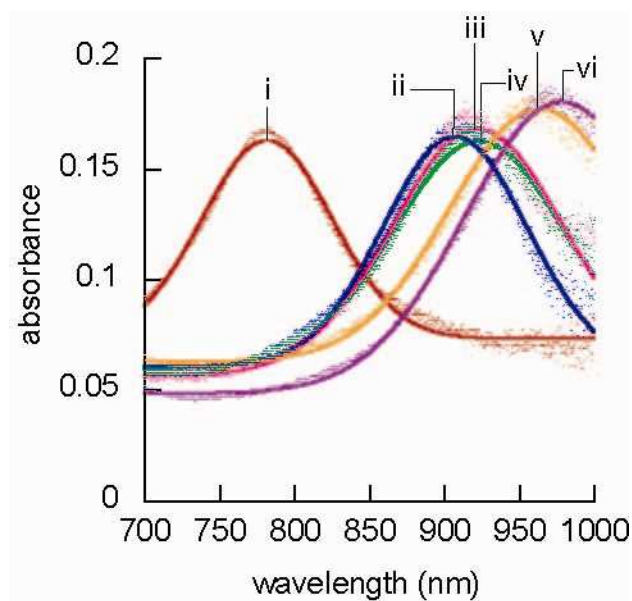


Figure S2. Spectra of bipyramid film IV (see Figure 4) in various solvents. In order of smallest to largest refractive index, the solvents are: air (i, red), water (ii, blue), acetonitrile (iii, pink), ethanol (iv, green), formamide (v, orange), and toluene (vi, purple).