

PbS Cubes with Pyramidal Pits: An Example of Etching Growth

Yanglong Hou,^{†,‡,*} Hiroshi Kondoh,[‡] and Toshiaki Ohta^{‡,¶}

[†] *Department of Advanced Materials and Nanotechnology, College of Engineering*

Peking University, Beijing 100871, China

[‡] *Department of Chemistry, School of Science, The University of Tokyo, Tokyo 113-0033, Japan*

[¶] *SR Center, Ritsumeikan University, Shiga 525-8577, Japan*

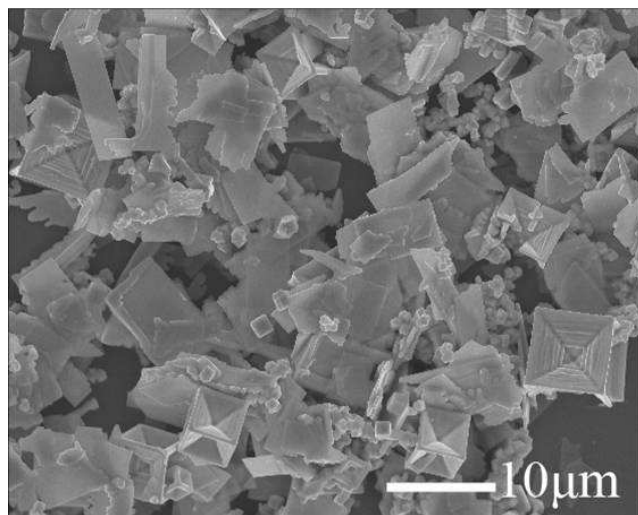


Figure S1 A typical SEM image of the as-synthesized PbS tapes and cubes with pyramidal pits.

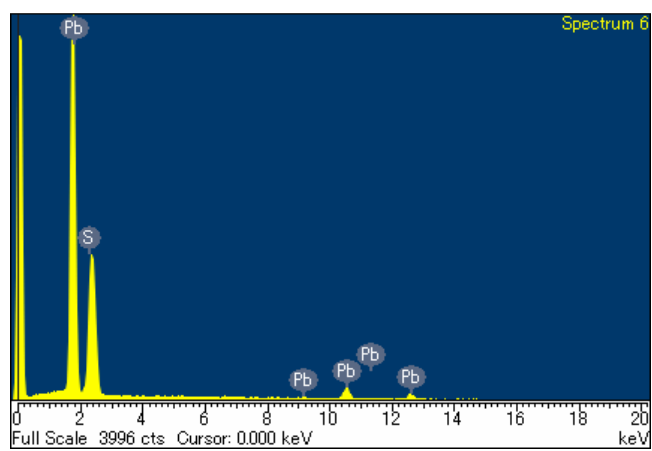


Figure S2 Energy dispersive x-ray spectroscopy of PbS cubes, indicating the molar ratio of Pb:S \square 51:49.

