

Supporting information for:

Pt Nanoparticles Inserting in Carbon Nanotubes Arrays Nanocomposites for Glucose Biosensors

Zhenhai Wen^{a,b}, Suqin Ci^a, Jinghong Li^{b,*}

^a*School of Environment and Chemical Engineering, Nanchang Hangkong University, Nanchang, 330063, China*

^b*Department of Chemistry, Key Lab of Bioorganic Phosphorus Chemistry & Chemical Biology, Tsinghua University, Beijing 100084, China*

*Corresponding author. Tel.: +86 10 6279 5290; Fax: +86 10 6277 1149

E-mail: jhli@mail.tsinghua.edu.cn

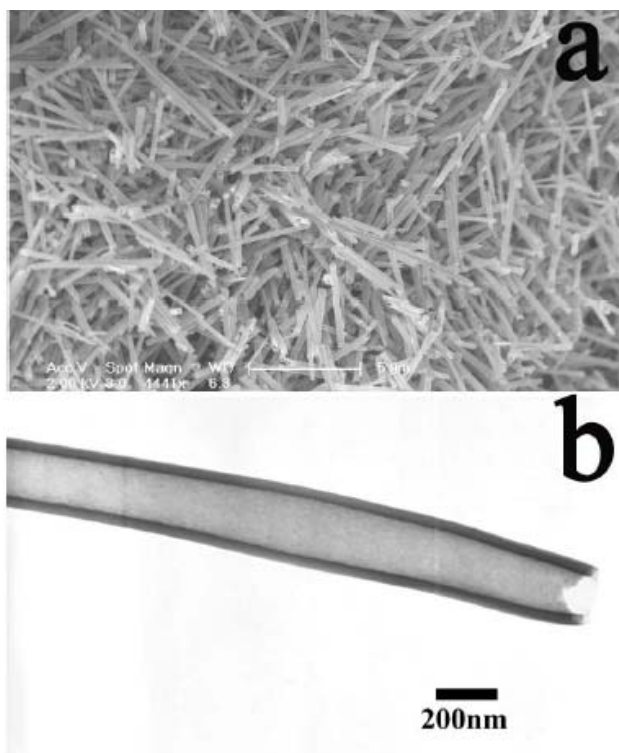


Figure S1. SEM (a) and TEM (b) images of the CNTs prepared through in the present method.

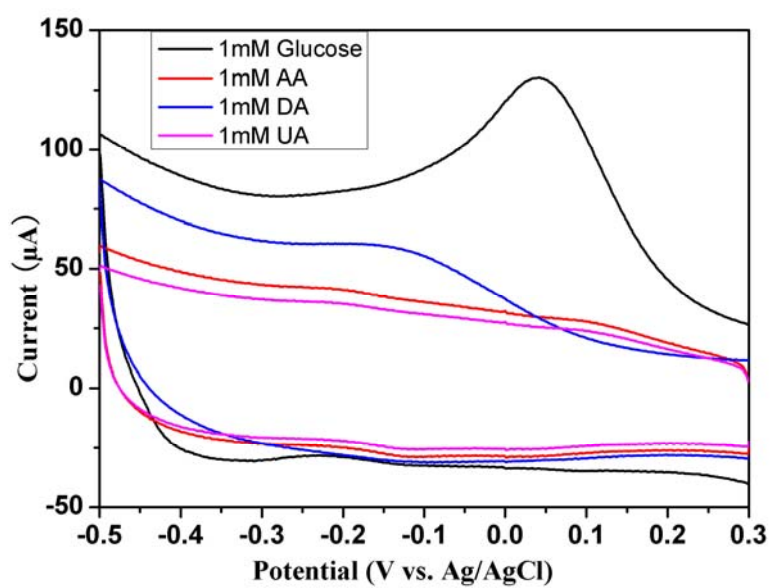


Figure S2. Cyclic voltammograms of 1 m M DA, UA, AA and 1 mM glucose at the Pt-CNTs-GOD electrode in pH 7.0 PBS solution respectively.