

Supporting Information

Titanium(IV) Complexes with N,N'-dialkyl-2,3-dihydroxyterephthalamides and 1-hydroxy-2(1H)-pyridinone as Siderophore and Tunichrome Analogues

Ritika Uppal, Hayley P. Israel, Christopher D. Incarvito, Ann M. Valentine*

**Department of Chemistry, Yale University, P. O. Box 208107, New Haven, Connecticut 06520-8107.*

Table of Contents

Figure S1. Linear tetramers of potassium ions, the core repeating component of the structure of complex **1**.

Figure S2. Intra-molecular hydrogen bonding between the N-H \cdots O(catechol) in the structure of complex **1**.

Figure S3. Structure of Na₂[Ti(etTAM)₃] (**3**) complex. The R-factor is >15%, hence the structure was only used to illustrate the connectivity of the ligands to the Ti.

Figure S4. ESI-MS of complex **3** in water showing peaks consistent with titanium isotope distributions for Na₂H[Ti(etTAM)₃]⁺ (peaks ~845.5 m/z). Experimental spectrum, solid line; simulated titanium isotope distributions, dashed line.

Figure S5. Cyclic voltammetric trace of 4 mM complex **1** in 20% MeCN/80% H₂O in the presence of 0.1 M KNO₃ using a hanging mercury drop electrode.

Figure S6. ESI-MS of complex **2** in water showing peaks consistent with titanium isotope distributions for (a) $\text{Na}_2\text{H}[\text{Ti}(\text{meTAM})_2(\text{OCH}_3)_2]^+$ (peaks ~ 601 m/z) where the Na^+ are provided by the instrument and (b) $\text{K}_3[\text{Ti}(\text{meTAM})_3]^+$ (peaks ~ 831 m/z). Experimental spectrum, solid line; simulated titanium isotope distributions, dashed line.

Figure S7. ESI-MS of complex **4** in water showing peaks consistent with titanium isotope distributions for $\text{Na}_3[\text{Ti}(\text{meTAM})_3]^+$ (peaks ~ 783 m/z). Experimental spectrum, solid line; simulated titanium isotope distributions, dashed line.

Figure S8. The structure showing pseudo-two-fold axis of rotation of complex **5**.

Figure S9. Ball and stick model showing π -stacking between the phenyl rings of different molecules in the X-ray crystal structure of complex **5**.

Figure S10. ESI-MS of complex **5** in water showing peaks consistent with titanium isotope distributions for (a) $\text{Na}[\text{Ti}(\text{1,2-HOPO})_2(\text{OCH}_3)_2]^+$ (peaks ~ 353 m/z), (b) $[\text{Ti}(\text{1,2-HOPO})_3]^+$ (peaks ~ 378 m/z) and (c) $[\text{Ti}_2(\text{1,2-HOPO})_4(\text{OCH}_3)(\text{OH})(\text{acac})]^+$ (peaks ~ 683 m/z). Experimental spectrum, solid line; simulated titanium isotope distributions, dashed line.

Figure S11. Ball and stick model showing the hypothetical binding of Mm-1 to Ti(IV). Spheres in the structure represent; purple, titanium; red, oxygen; grey, carbon; blue, nitrogen. Hydrogen atoms are not shown in the figure. The energy was minimized using the molecular mechanics algorithm in Chem 3D.

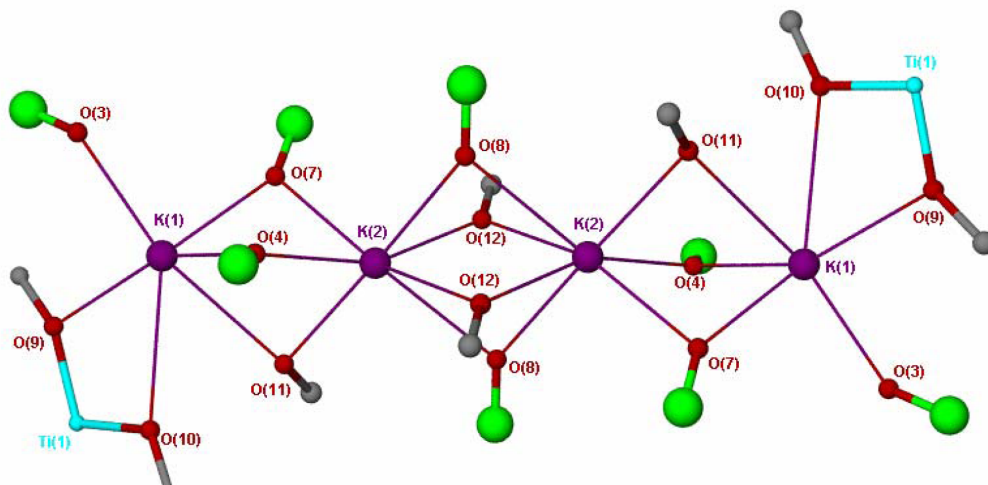


Figure S1. Linear tetramers of potassium ions, the core repeating component of the structure of complex 1.

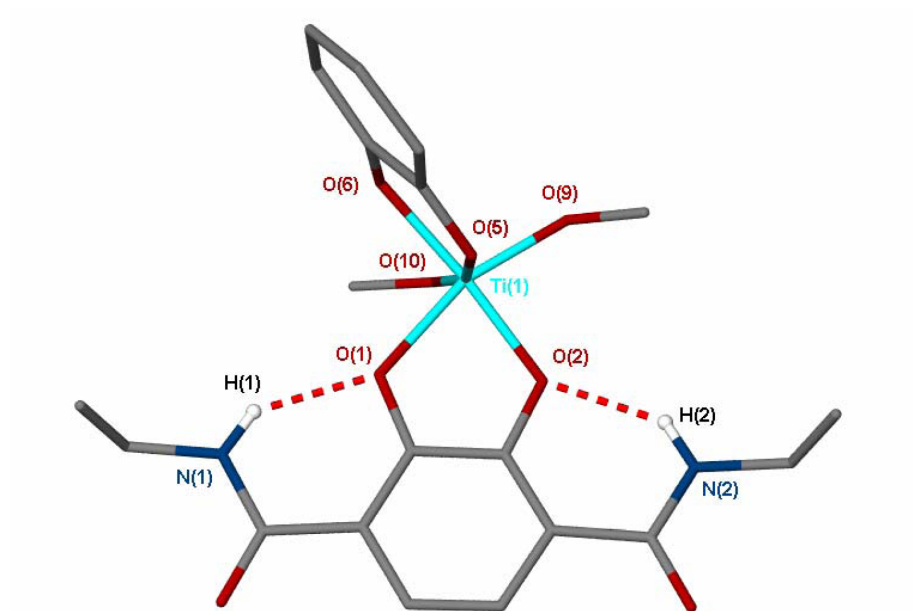


Figure S2. Intra-molecular hydrogen bonding between the N-H \cdots O(catechol) in the structure of complex **1**.

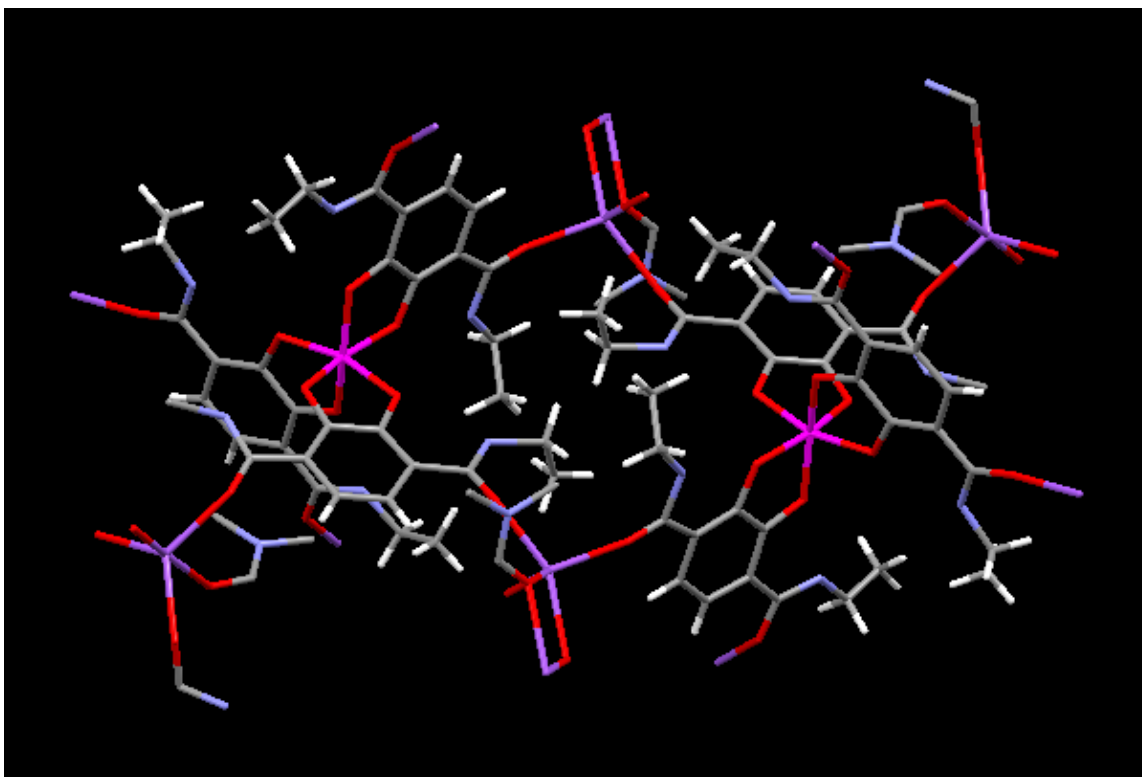


Figure S3 Structure of Na₂[Ti(etTAM)₃] (**3**) complex. The R-factor is >15%, hence the structure was only used to illustrate the connectivity of the ligands to the Ti.

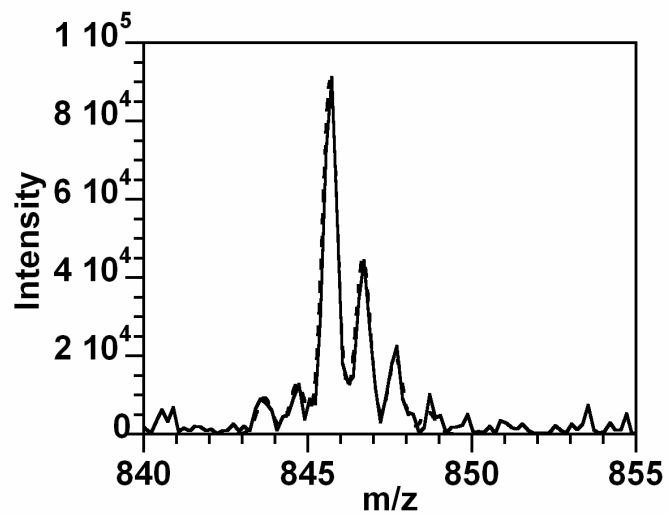


Figure S4. ESI-MS of complex **3** in water showing peaks consistent with titanium isotope distributions for $\text{Na}_2\text{H}[\text{Ti}(\text{etTAM})_3]^+$ (peaks ~ 845.5 m/z). Experimental spectrum, solid line; simulated titanium isotope distributions, dashed line.

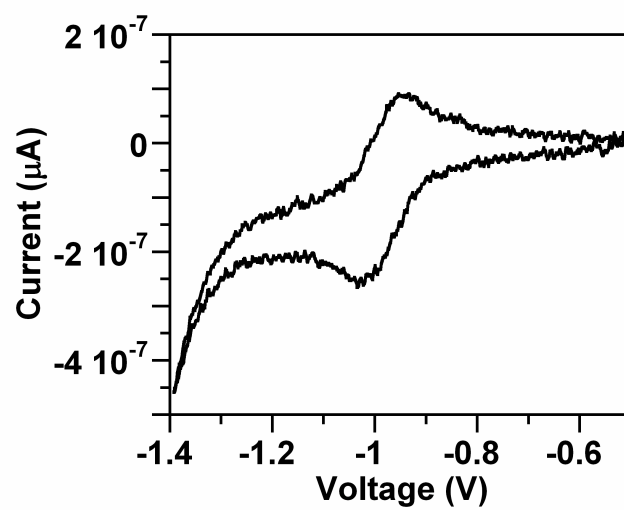


Figure S5. Cyclic voltammetric trace of 4 mM complex **1** in 20% MeCN/80% H₂O in the presence of 0.1 M KNO₃ using a hanging mercury drop electrode.

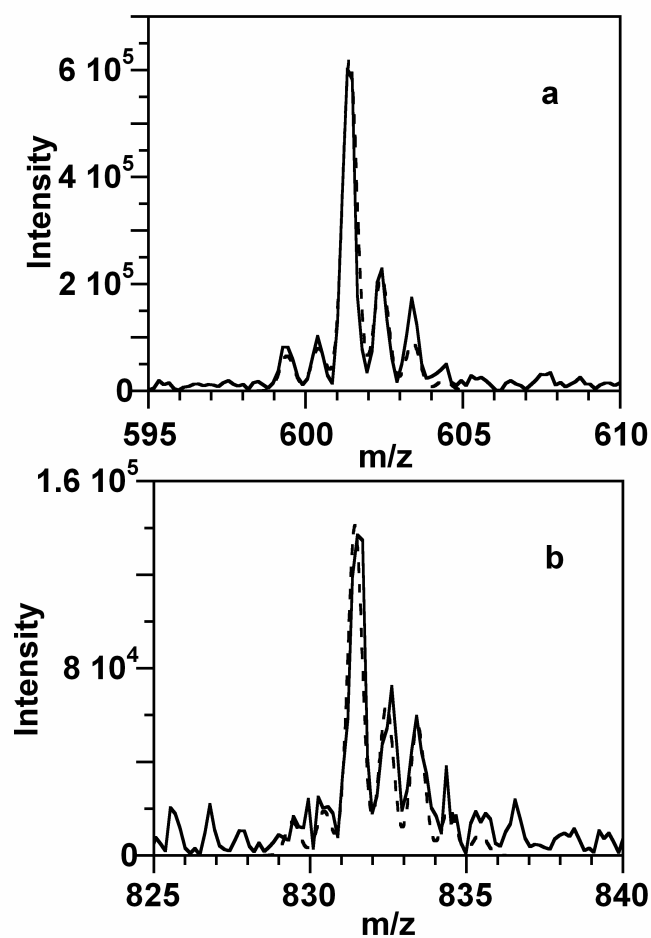


Figure S6. ESI-MS of complex **2** in water showing peaks consistent with titanium isotope distributions for (a) $\text{Na}_2\text{H}[\text{Ti}(\text{meTAM})_2(\text{OCH}_3)_2]^+$ (peaks ~ 601 m/z) where the Na^+ are provided by the instrument and (b) $\text{K}_3[\text{Ti}(\text{meTAM})_3]^+$ (peaks ~ 831 m/z). Experimental spectrum, solid line; simulated titanium isotope distributions, dashed line.

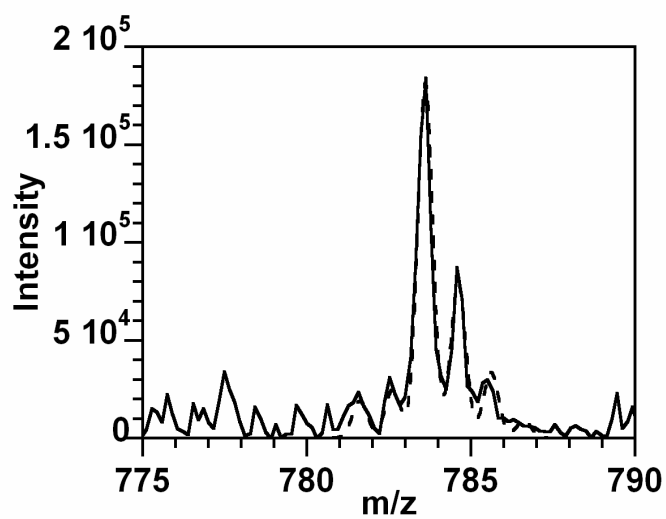


Figure S7. ESI-MS of complex **4** in water showing peaks consistent with titanium isotope distributions for $\text{Na}_3[\text{Ti}(\text{meTAM})_3]^+$ (peaks ~ 783 m/z). Experimental spectrum, solid line; simulated titanium isotope distributions, dashed line.

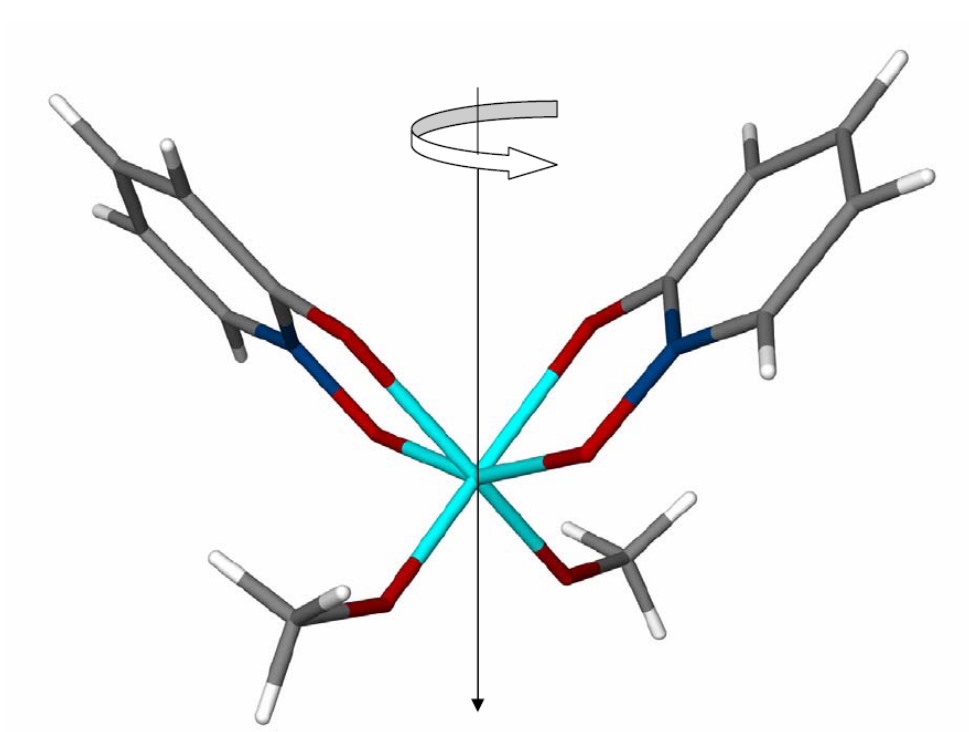


Figure S8. The structure showing pseudo-two-fold axis of rotation of complex **5**.

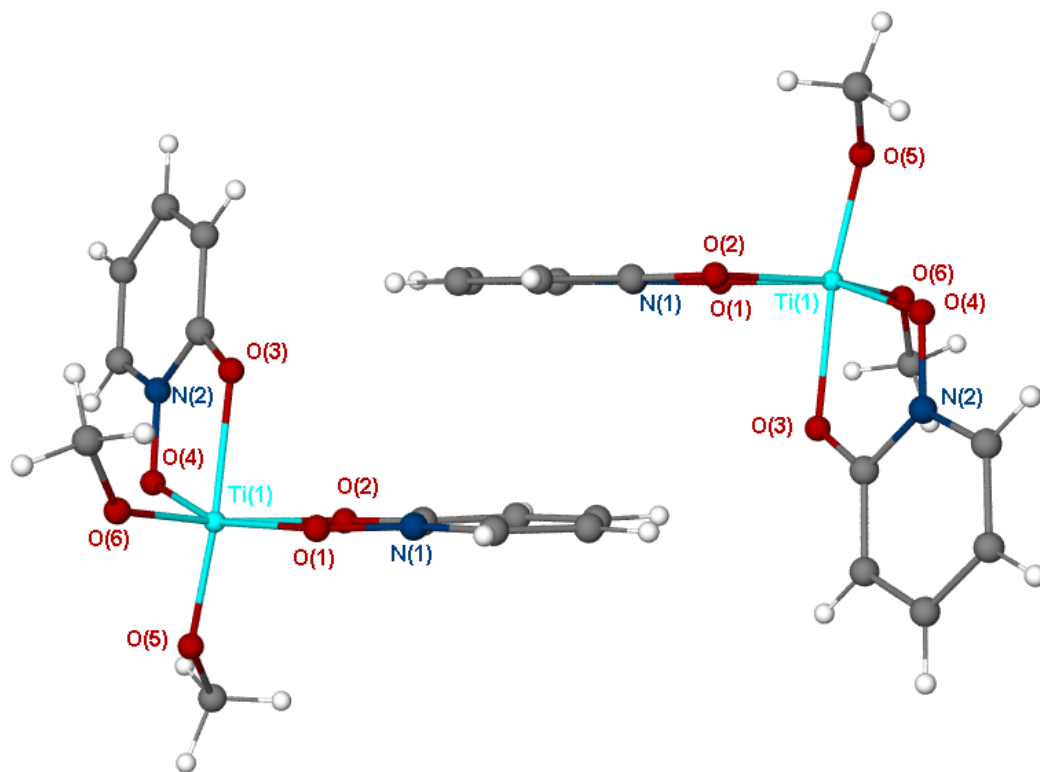


Figure S9. Ball and stick model showing π -stacking between the phenyl rings of different molecules in the X-ray crystal structure of complex **5**.

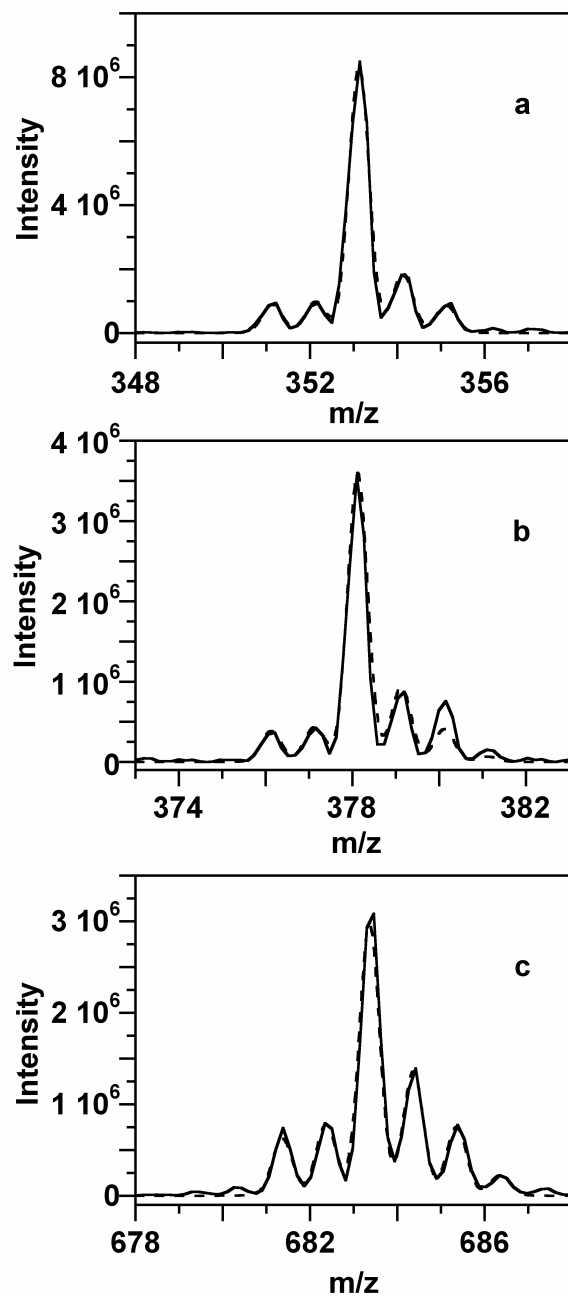


Figure S10. ESI-MS of complex **5** in water showing peaks consistent with titanium isotope distributions for (a) $\text{Na}[\text{Ti}(\text{1,2-HOPO})_2(\text{OCH}_3)_2]^+$ (peaks ~ 353 m/z), (b) $[\text{Ti}(\text{1,2-HOPO})_3]^+$ (peaks ~ 378 m/z) and (c) $[\text{Ti}_2(\text{1,2-HOPO})_4(\text{OCH}_3)(\text{OH})(\text{acac})]^+$ (peaks ~ 683 m/z). Experimental spectrum, solid line; simulated titanium isotope distributions, dashed line.

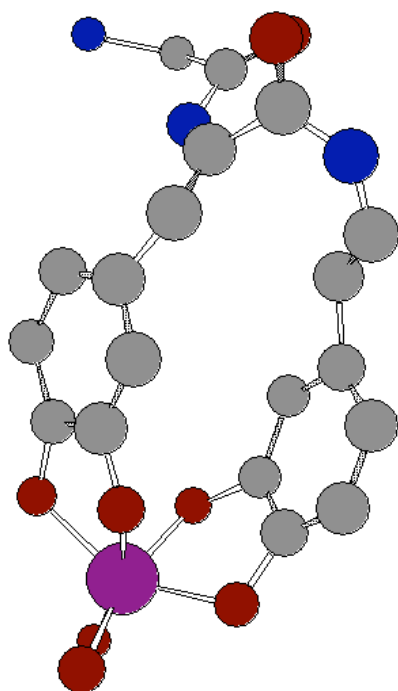


Figure S11. Ball and stick model showing the hypothetical binding of Mm-1 to Ti(IV). Spheres in the structure represent; purple, titanium; red, oxygen; grey, carbon; blue, nitrogen. Hydrogen atoms are not shown in the figure. The energy was minimized using the molecular mechanics algorithm in Chem 3D.