

Supporting Information:

Self-Assembly of CdTe Tetrapods into Network Monolayers at the Air/Water Interface

Matthew D. Goodman, Lei Zhao, Karen A. DeRocher, Jun Wang, Surya K. Mallapragada, and

*Zhiqun Lin**

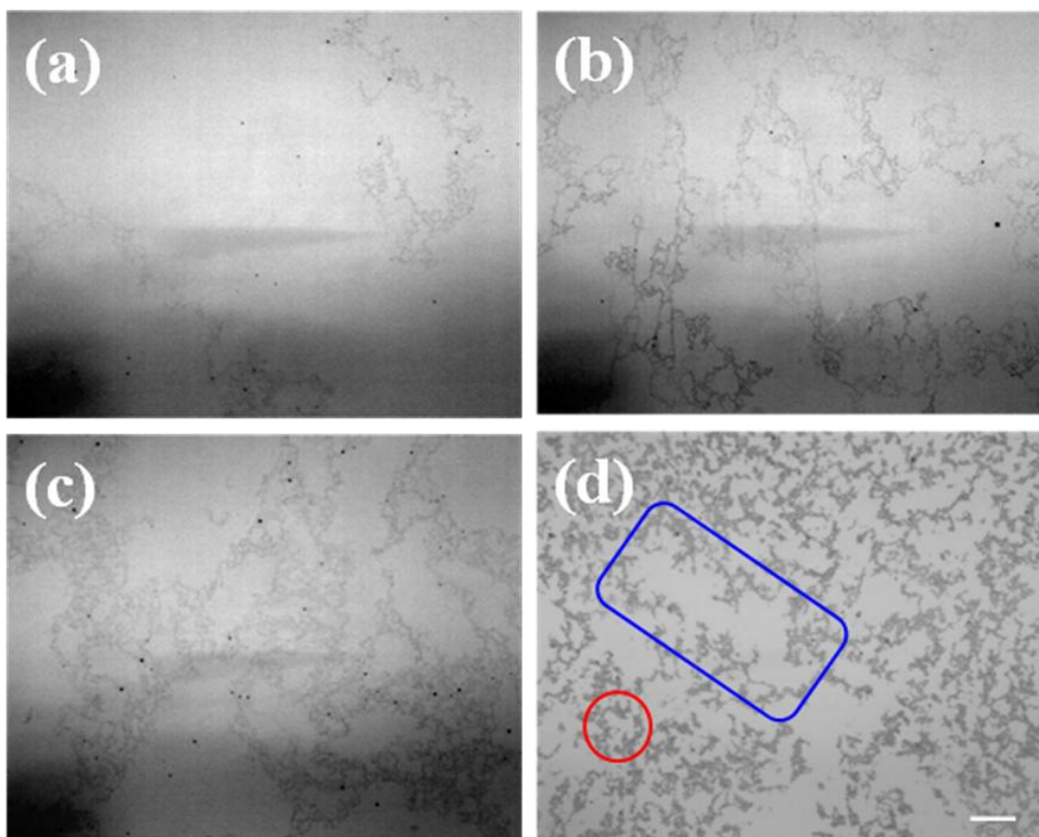


Figure S1. Optical micrographs of LB samples obtained at surface pressures of (a) $\pi = 1$ mN/m, (b) $\pi = 10$ mN/m, (c) $\pi = 22$ mN/m, and (d) $\pi = 39$ mN m⁻¹. The original color images were converted into black and white for better contrast. Scale bar = 35 μ m for all images. Optical micrograph of the 39 mN/m sample shows long range networks; red circle and blue rectangle indicate voids on the tens and hundreds of micrometers, respectively.

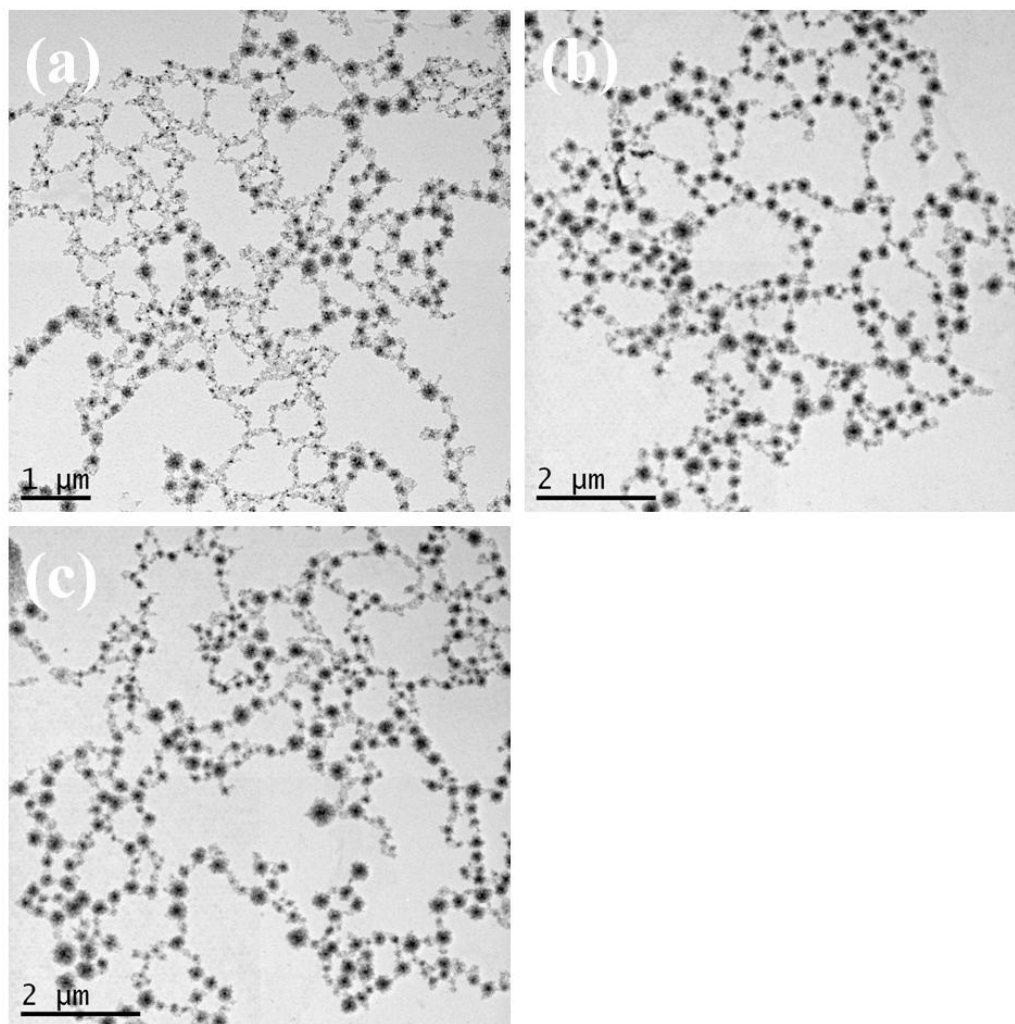


Figure S2. TEM images showing tetrapod packing on a large scale from an LB deposition at the surface pressure $\pi = 39$ mN/m.