

Supporting Information

Apoptotic percentages were calculated based on the cells stained with annexin-V (FITC) alone (early apoptosis, Q4) and doubly stained with both annexin V and PI (late apoptosis, Q2). This information is available free of charge via the Internet at <http://pubs.acs.org/>.

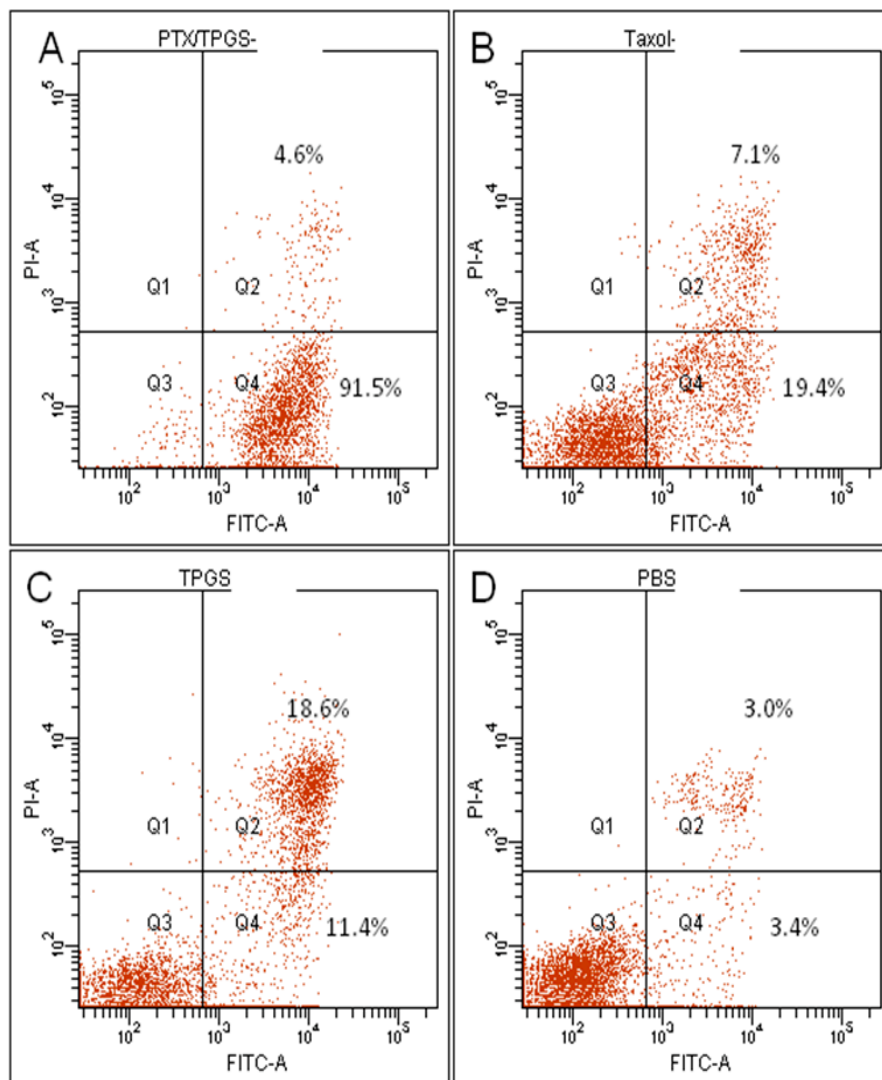


Figure SI 1. Apoptosis induced by different PTX/TPGS nanocrystals (A), Taxol (B) and TPGS alone (C) in the NCI/ADR-RES cells. Cells treated with PBS (D) were used as a negative control. Annexin-V-FITC and propidium iodide (PI) were used to assess apoptosis.