

**Synthesis of All-Carbon, Quaternary Center-Containing  
Cyclohexenones through an Organocatalyzed, Multi-  
Component Coupling**

**Hua Yang and Rich G. Carter\***

*Department of Chemistry, Oregon State University, Corvallis, OR 97331.*

---

**Electronic Supplementary Information: HPLC Traces**

---

**Synthesis of All-Carbon, Quaternary Center-Containing  
Cyclohexenones through an Organocatalyzed, Multi-Component  
Coupling: HPLC Traces**

**Table of Contents**

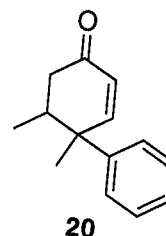
Compound #	Page Number
<b>20</b>	S88
<b>35a</b>	S90
<b>35b</b>	S92
<b>35c</b>	S94
<b>35d</b>	S96
<b>35e</b>	S98
<b>35f</b>	S100
<b>38</b>	S102
<b>39</b>	S104
<b>44</b>	S106
<b>45</b>	S108
<b>46</b>	S110
<b>47</b>	S112
<b>53</b>	S114
<b>54</b>	S116
<b>55</b>	S118
<b>56</b>	S120
<b>57</b>	S122
<b>60</b>	S124
<b>61</b>	S126

Please note that racemic mixtures (denoted as mixture on trace page) were generated by mixing of enantiomeric products generated from individual experiments using D- and L-forms of catalyst **25**.

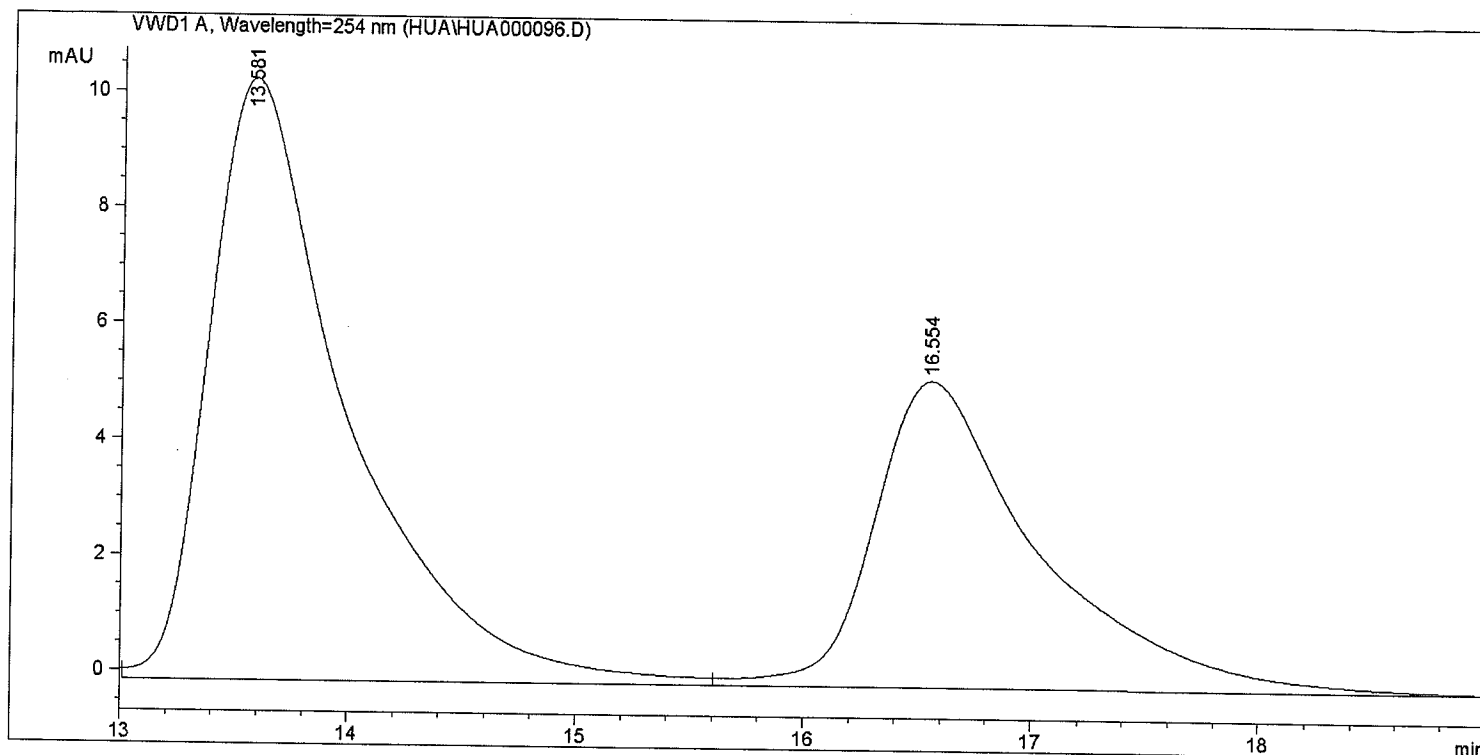
=====

Acq. Operator	: Hua	Seq. Line	: 1
Acq. Instrument	: Instrument 1	Location	: Vial 1
Injection Date	: 10/5/2009 2:45:56 PM	Inj	: 1
		Inj Volume	: 5 µl
Acq. Method	: C:\CHEM32\1\METHODS\HG129.M\MSI83.M		
Last changed	: 10/5/2009 1:13:01 PM by Hua		
Analysis Method	: C:\CHEM32\1\METHODS\HUA.M		
Last changed	: 3/15/2010 7:17:02 PM by CHAO		
	(modified after loading)		
Method Info	: ADanalytical column, 1.0 mL/min, 254 nm, IPA:HEX10:90		

=====



(mixture)



=====

Fraction Information

=====

Fraction collection off

=====

No Fractions found.

=====

Area Percent Report

=====

Sorted By : Signal  
Multiplier : 1.0000  
Dilution : 1.0000  
Use Multiplier & Dilution Factor with ISTDs

Signal 1: VWD1 A, Wavelength=254 nm

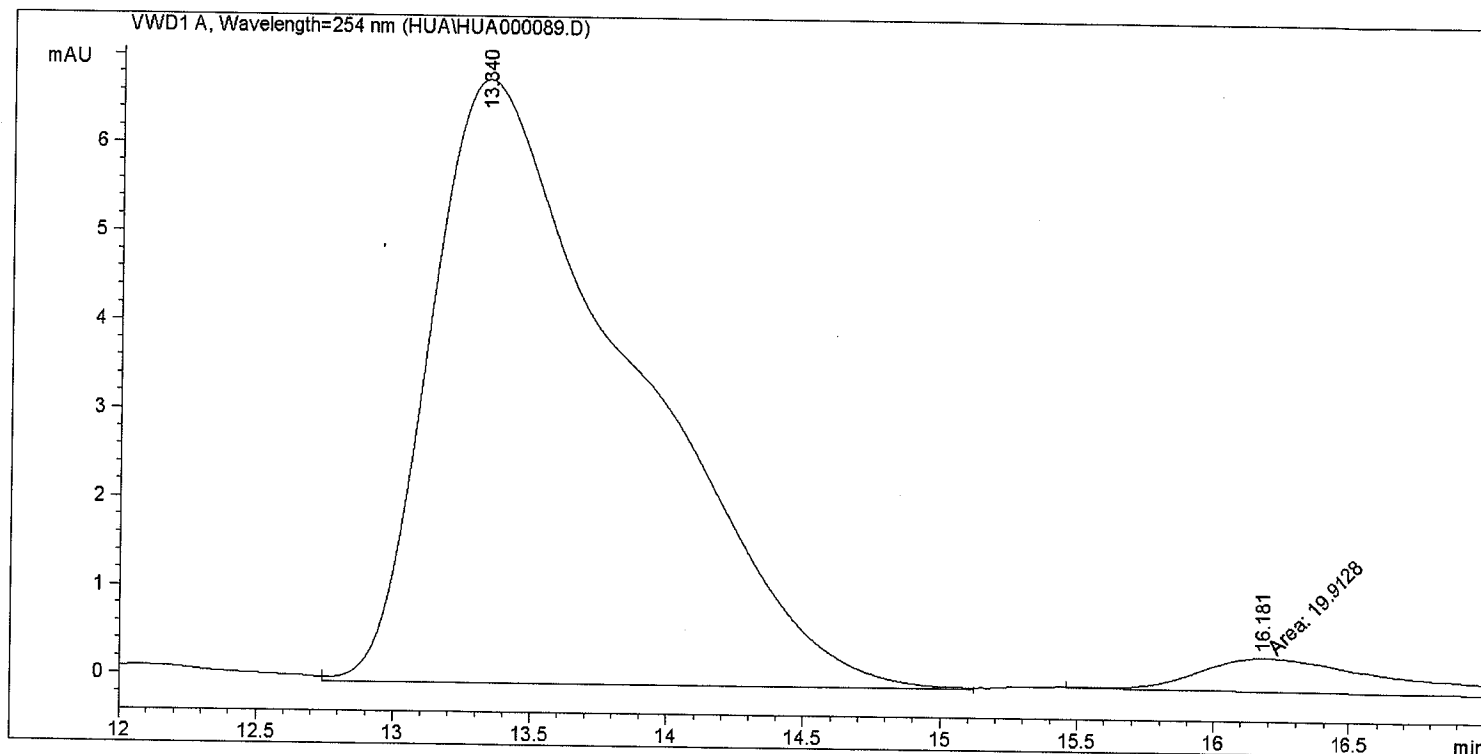
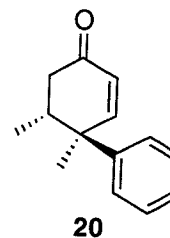
Peak #	RetTime [min]	Type	Width [min]	Area mAU	Area %	Height [mAU]
1	13.581	VV	0.6158	439.66168	61.8735	10.39433
2	16.554	VBA	0.7351	270.91965	38.1265	5.30925

Sample Name: 14-19

```

=====
Acq. Operator   : Hua                      Seq. Line :    1
Acq. Instrument : Instrument 1             Location  : Vial 1
Injection Date  : 10/4/2009 3:48:51 PM    Inj       :    1
                                           Inj Volume: 5 µl
Acq. Method     : C:\CHEM32\1\METHODS\HG129.M\MSI83.M
Last changed    : 10/4/2009 3:24:09 PM by Hua
Analysis Method : C:\CHEM32\1\METHODS\HUA.M
Last changed    : 3/15/2010 7:21:11 PM by CHAO
                  (modified after loading)
Method Info     : ADanalytical column, 1.0 mL/min, 254 nm, IPA:HEX10:90
=====

```



```

=====
Fraction Information
=====

```

```

=====
Fraction collection off
=====

```

```

=====
No Fractions found.
=====

```

```

=====
Area Percent Report
=====

```

```

Sorted By      : Signal
Multiplier     : 1.0000
Dilution       : 1.0000
Use Multiplier & Dilution Factor with ISTDs

```

Signal 1: VWD1 A, Wavelength=254 nm

Peak #	RetTime [min]	Type	Width [min]	Area mAU	Area *s	Height [mAU]	Area %
1	13.340	VV	0.7263	349.69150		6.81992	94.6124
2	16.181	MM	0.8680	19.91276		3.82342e-1	5.3876

Sample Name: 14-68 mix

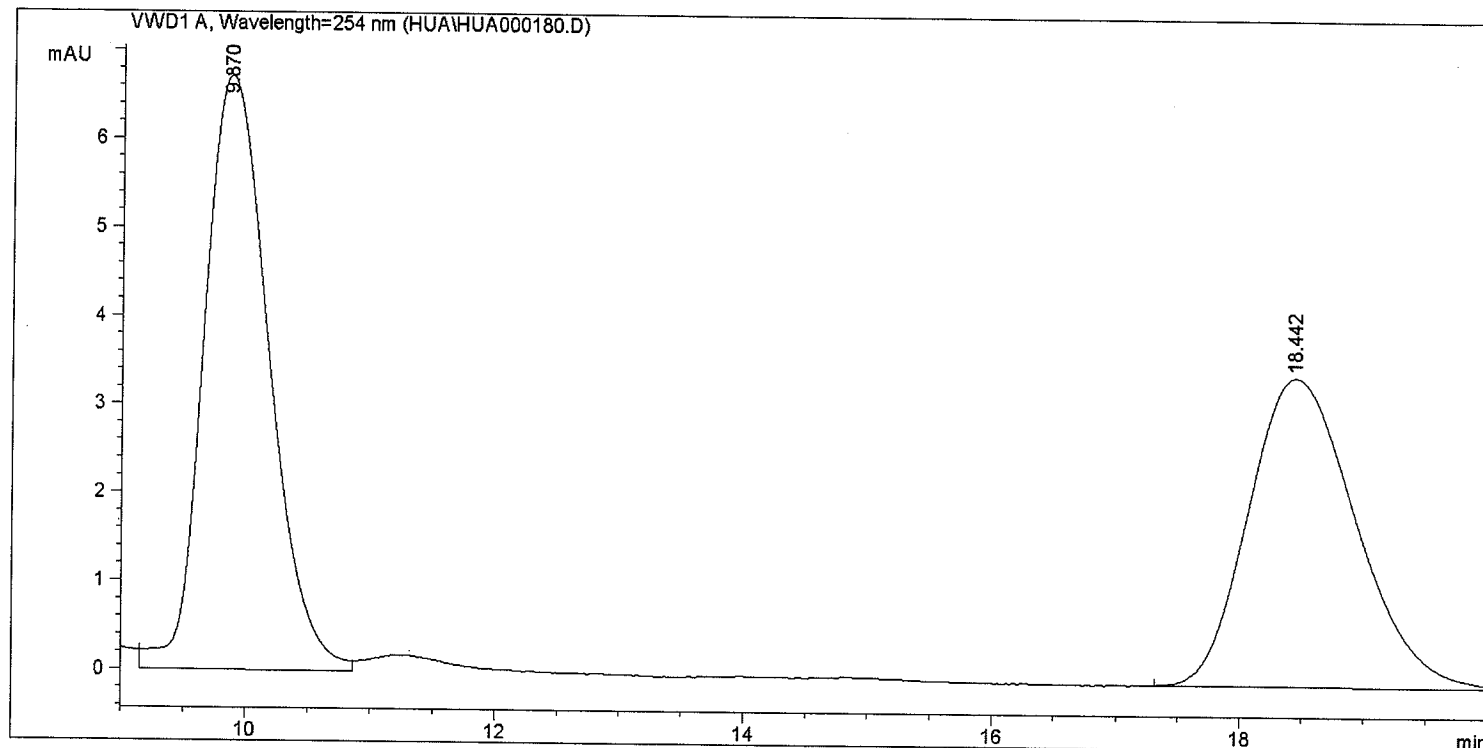
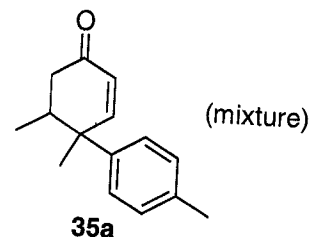
```

=====
Acq. Operator   : HUA                      Seq. Line :    1
Acq. Instrument : Instrument 1              Location  : Vial 1
Injection Date  : 11/9/2009 2:47:15 PM      Inj       :    1
                                           Inj Volume: 5 µl

Acq. Method     : C:\CHEM32\1\METHODS\022008CW.M
Last changed    : 11/9/2009 2:45:05 PM by HUA
Analysis Method : C:\CHEM32\1\METHODS\HUA.M
Last changed    : 3/15/2010 7:22:28 PM by CHAO
                  (modified after loading)

Method Info     : ADanalytical column, 1.0 mL/min, 254 nm, IPA:HEX10:90
=====

```



```

=====
Fraction Information
=====

```

Fraction collection off

No Fractions found.

```

=====
Area Percent Report
=====

```

```

Sorted By      : Signal
Multiplier     : 1.0000
Dilution       : 1.0000
Use Multiplier & Dilution Factor with ISTDs

```

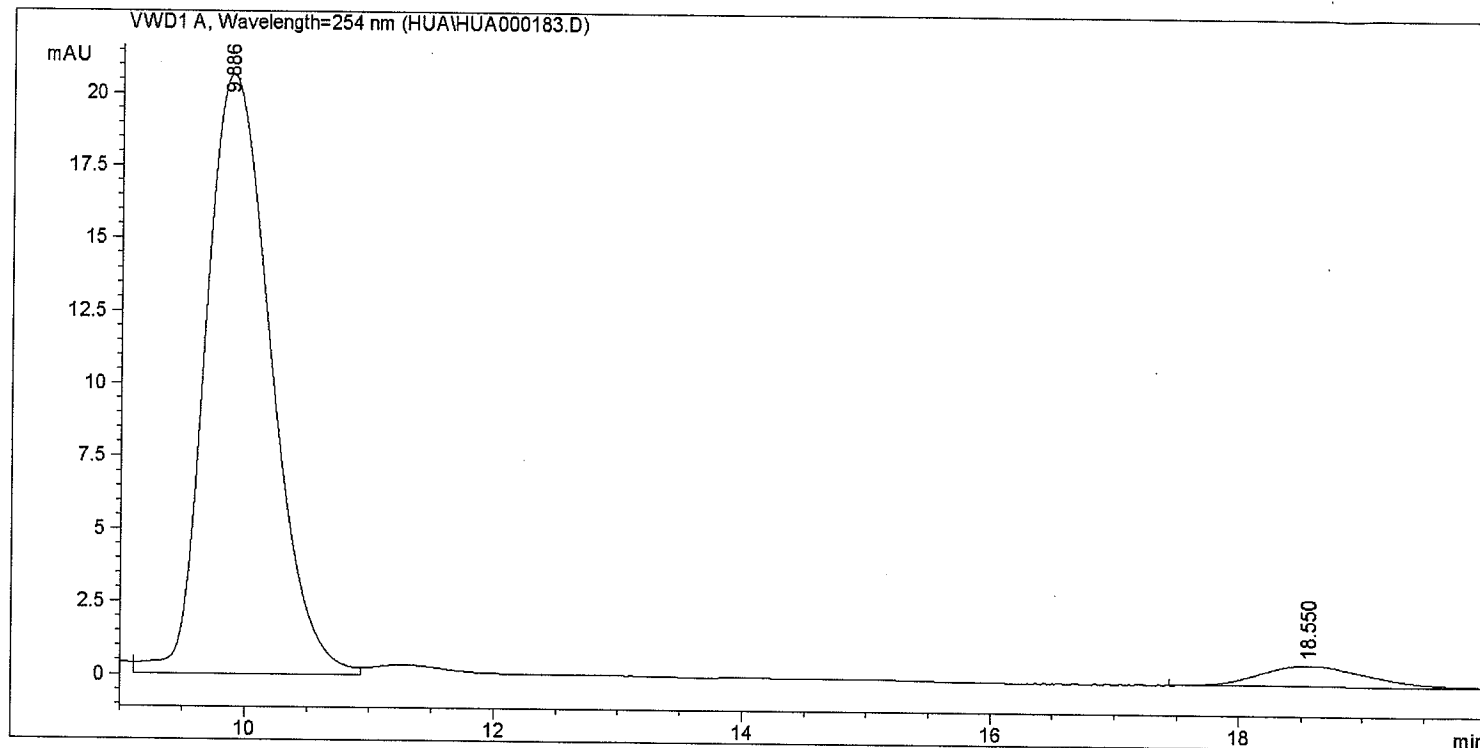
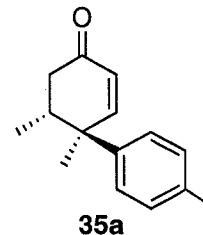
Signal 1: VWD1 A, Wavelength=254 nm

Peak #	RetTime [min]	Type	Width [min]	Area mAU *s	Height [mAU]	Area %
1	9.870	VV	0.5708	244.89981	6.71901	53.8869
2	18.442	BBA	0.9398	209.57021	3.48761	46.1131

```
=====
Acq. Operator   : HUA                      Seq. Line :    1
Acq. Instrument : Instrument 1              Location  : Vial 1
Injection Date  : 11/9/2009 3:17:00 PM      Inj       :    1
                                           Inj Volume: 5 µl

Acq. Method     : C:\CHEM32\1\METHODS\022008CW.M
Last changed    : 11/9/2009 2:45:05 PM by HUA
Analysis Method : C:\CHEM32\1\METHODS\HUA.M
Last changed    : 3/15/2010 7:23:39 PM by CHAO
                  (modified after loading)

Method Info     : ADanalytical column, 1.0 mL/min, 254 nm, IPA:HEX10:90
=====
```



=====  
Fraction Information  
=====

Fraction collection off  
=====

No Fractions found.  
=====

=====  
Area Percent Report  
=====

Sorted By : Signal  
Multiplier : 1.0000  
Dilution : 1.0000  
Use Multiplier & Dilution Factor with ISTDs

Signal 1: VWD1 A, Wavelength=254 nm

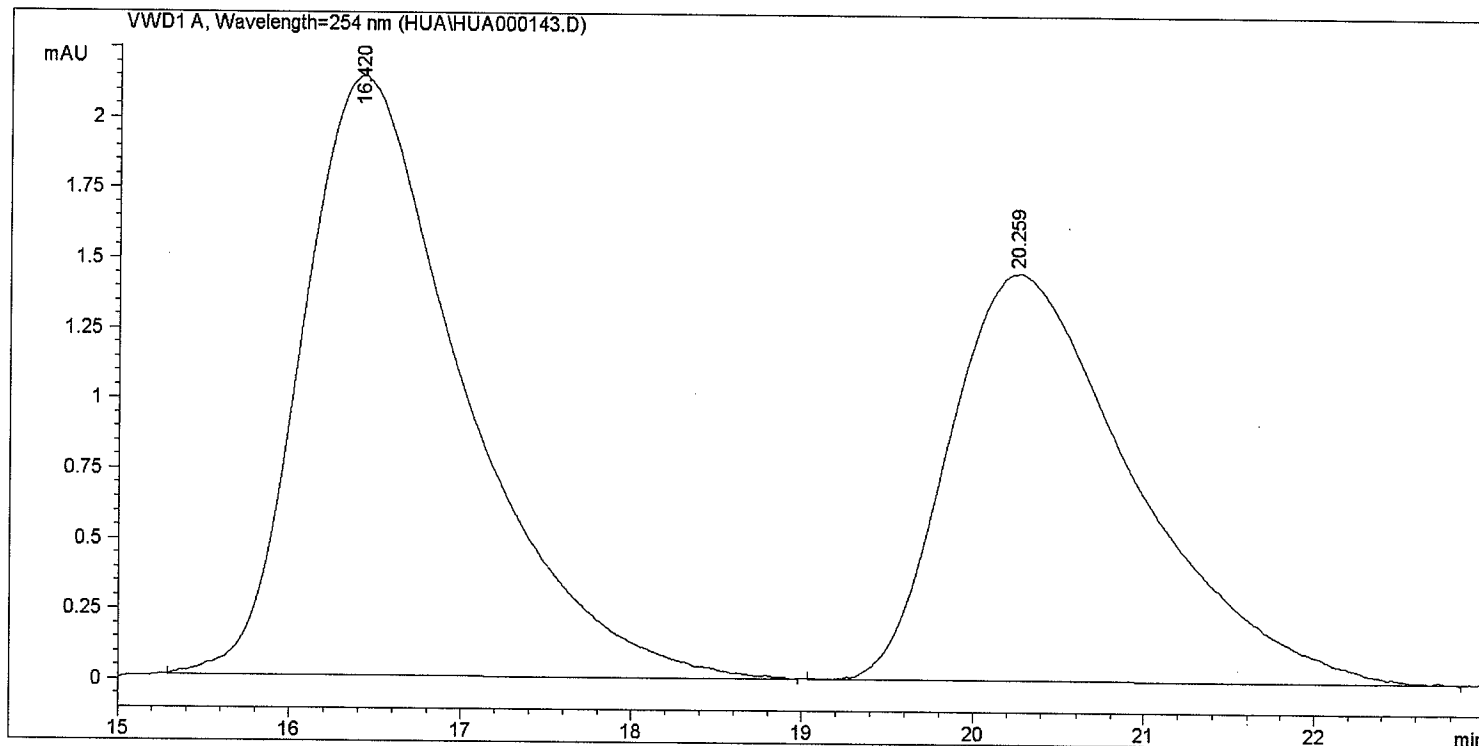
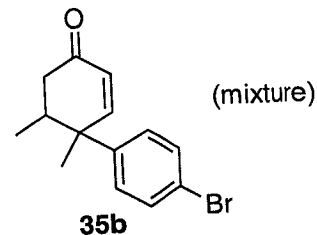
Peak #	RetTime [min]	Type	Width [min]	Area mAU *s	Height [mAU]	Area %
1	9.886	VV	0.5732	745.82483	20.62910	94.4036
2	18.550	BBA	0.9160	44.21366	7.18462e-1	5.5964

Sample Name: 14-49 mix

=====

Acq. Operator	: HUA	Seq. Line	: 1
Acq. Instrument	: Instrument 1	Location	: Vial 1
Injection Date	: 10/25/2009 3:01:55 PM	Inj	: 1
		Inj Volume	: 5 µl
Acq. Method	: C:\CHEM32\1\METHODS\022008CW.M		
Last changed	: 10/25/2009 2:00:29 PM by HUA		
Analysis Method	: C:\CHEM32\1\METHODS\HUA.M		
Last changed	: 3/15/2010 7:24:57 PM by CHAO		
	(modified after loading)		
Method Info	: ADanalytical column, 1.0 mL/min, 254 nm, IPA:HEX10:90		

=====



=====

Fraction Information

=====

Fraction collection off

No Fractions found.

=====

Area Percent Report

=====

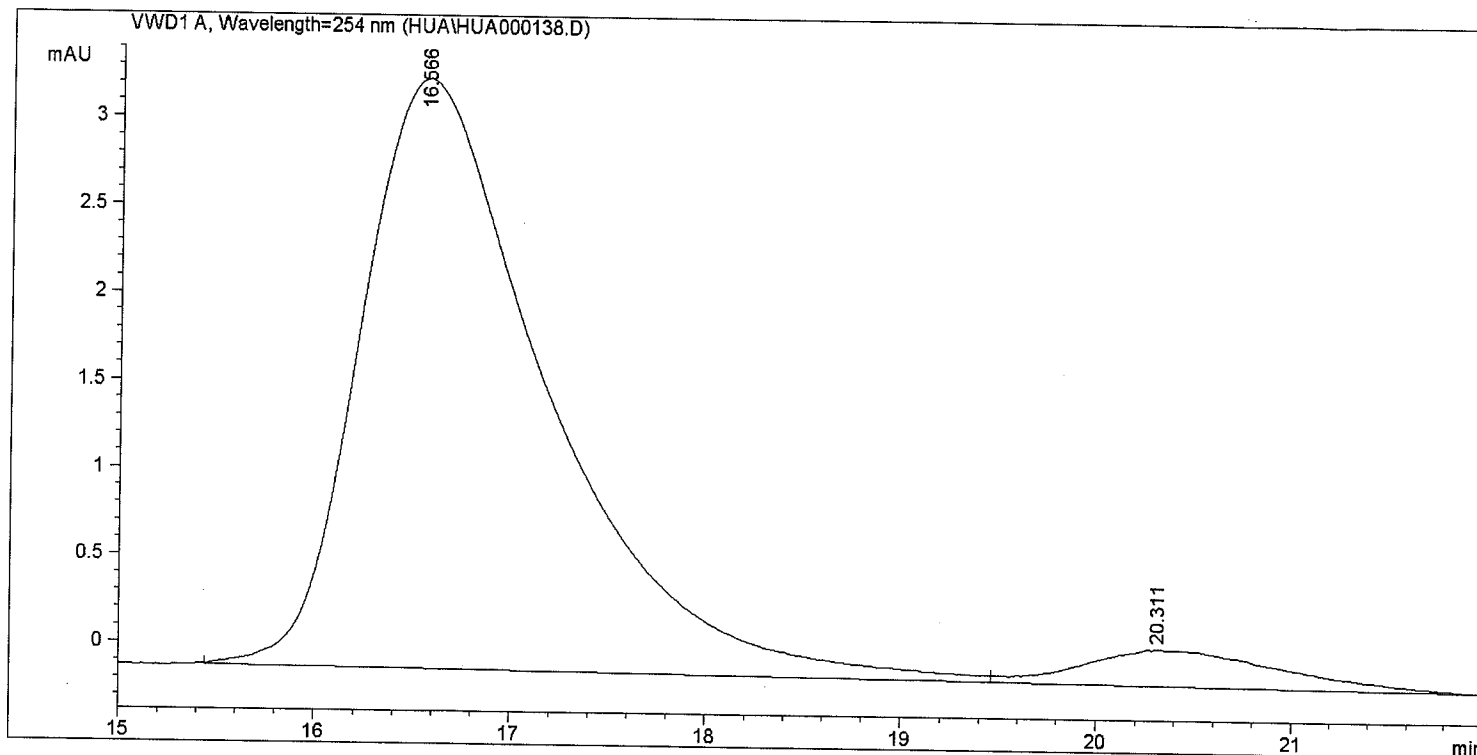
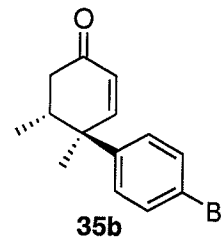
Sorted By : Signal  
Multiplier : 1.0000  
Dilution : 1.0000  
Use Multiplier & Dilution Factor with ISTDs

Signal 1: VWD1 A, Wavelength=254 nm

Peak #	RetTime [min]	Type	Width [min]	Area mAU *s	Height [mAU]	Area %
1	16.420	BB	0.9734	139.76315	2.13506	56.1290
2	20.259	BB	1.1465	109.24050	1.45064	43.8710

=====

Acq. Operator	: HUA	Seq. Line	: 1
Acq. Instrument	: Instrument 1	Location	: Vial 1
Injection Date	: 10/25/2009 2:02:52 PM	Inj	: 1
		Inj Volume	: 5 µl
Acq. Method	: C:\CHEM32\1\METHODS\022008CW.M		
Last changed	: 10/25/2009 2:00:29 PM by HUA		
Analysis Method	: C:\CHEM32\1\METHODS\HUA.M		
Last changed	: 3/15/2010 7:26:22 PM by CHAO		
	(modified after loading)		
Method Info	: ADanalytical column, 1.0 mL/min, 254 nm, IPA:HEX10:90		



=====

Fraction Information

=====

Fraction collection off

No Fractions found.

=====

Area Percent Report

=====

Sorted By : Signal  
Multiplier : 1.0000  
Dilution : 1.0000  
Use Multiplier & Dilution Factor with ISTDs

Signal 1: VWD1 A, Wavelength=254 nm

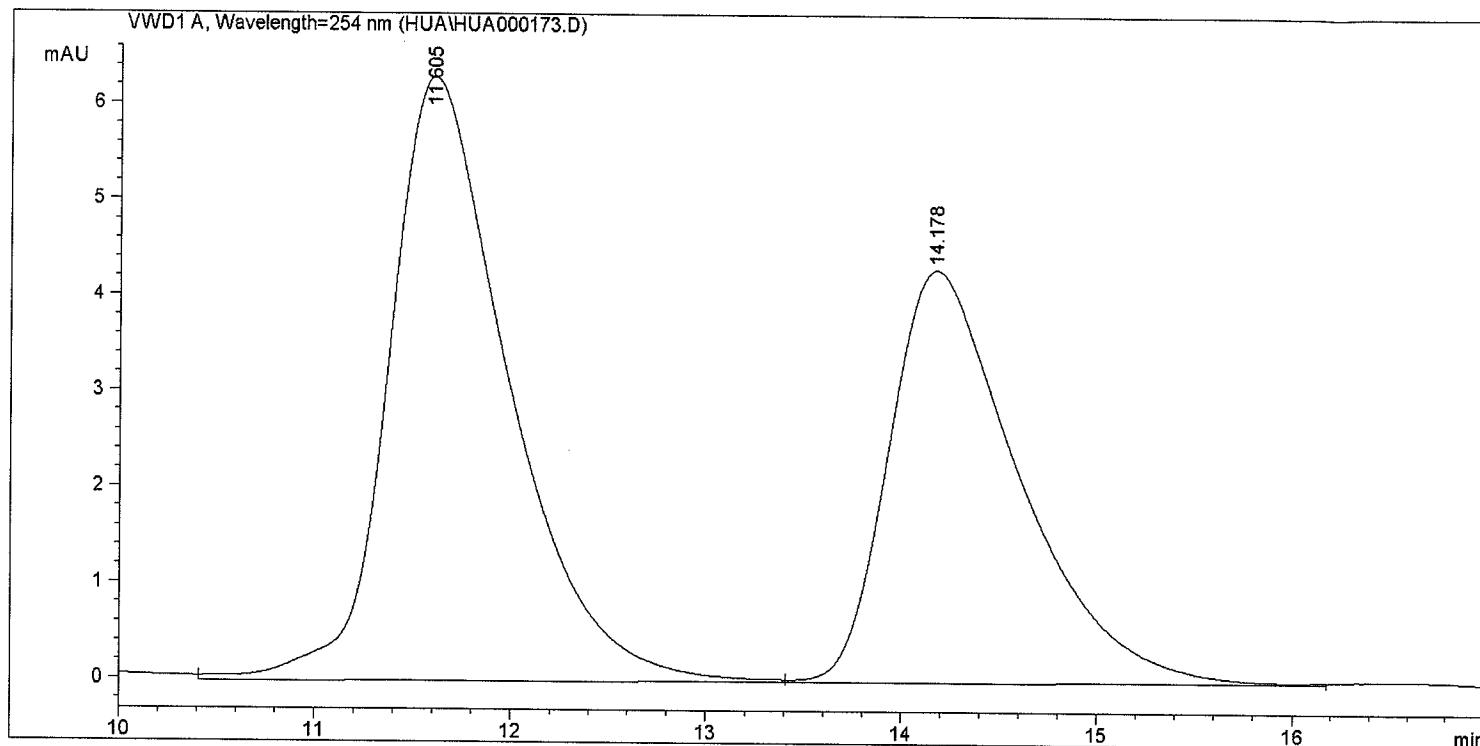
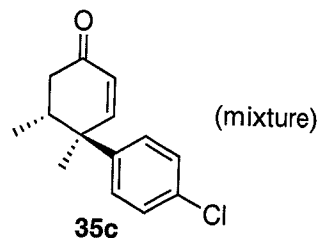
Peak #	RetTime [min]	Type	Width [min]	Area mAU	Area %	Height [mAU]
1	16.566	BV	0.9814	224.63278	93.6499	3.37030
2	20.311	VBA	0.8964	15.23167	6.3501	2.09105e-1



```
=====
Acq. Operator   : HUA                      Seq. Line :    1
Acq. Instrument : Instrument 1              Location  : Vial
Injection Date  : 11/8/2009 8:05:00 PM      Inj       :    1
                                           Inj Volume: 5 µl

Acq. Method     : C:\CHEM32\1\METHODS\022008CW.M
Last changed    : 11/8/2009 8:02:43 PM by HUA
Analysis Method : C:\CHEM32\1\METHODS\HUA.M
Last changed    : 3/15/2010 7:27:43 PM by CHAO
                  (modified after loading)

Method Info     : ADanalytical column, 1.0 mL/min, 254 nm, IPA:HEX
=====
```



=====  
Fraction Information  
=====

Fraction collection off  
=====

No Fractions found.  
=====

=====  
Area Percent Report  
=====

```
Sorted By      :      Signal
Multiplier     :      1.0000
Dilution       :      1.0000
Use Multiplier & Dilution Factor with ISTDs
```

Signal 1: VWD1 A, Wavelength=254 nm

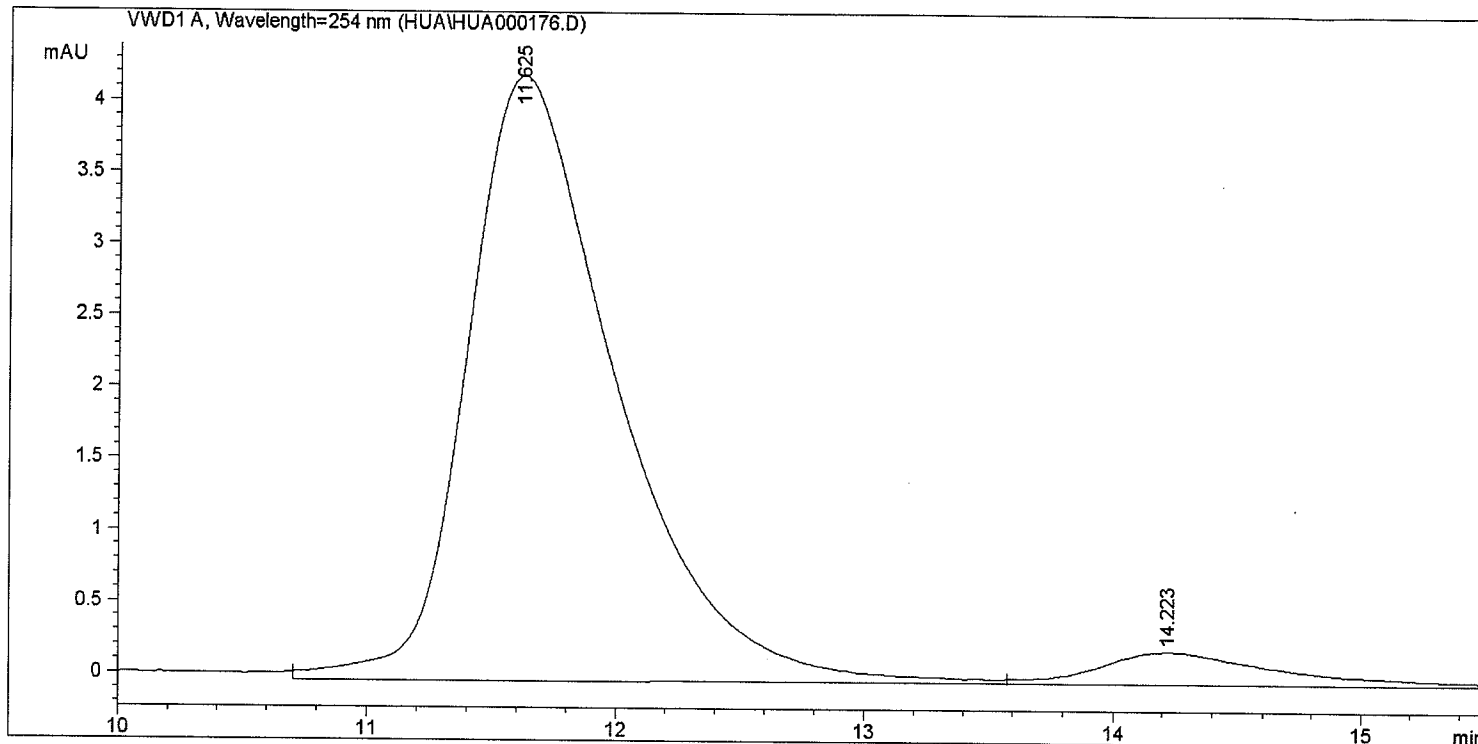
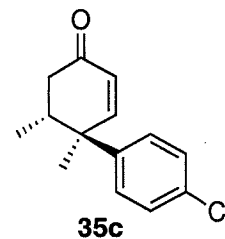
Peak #	RetTime [min]	Type	Width [min]	Area mAU*s	Height [mAU]	Area %
1	11.605	VV	0.6300	268.10355	6.30592	57.2882
2	14.178	VB	0.6936	199.88745	4.30113	42.7118

Sample Name: 14-66

```
=====
Acq. Operator   : HUA                               Seq. Line :    1
Acq. Instrument : Instrument 1                       Location  : Vial 1
Injection Date  : 11/8/2009 8:36:43 PM              Inj       :    1
                                                    Inj Volume: 5 µl

Acq. Method     : C:\CHEM32\1\METHODS\022008CW.M
Last changed    : 11/8/2009 8:02:43 PM by HUA
Analysis Method : C:\CHEM32\1\METHODS\HUA.M
Last changed    : 3/15/2010 7:29:21 PM by CHAO
                  (modified after loading)

Method Info     : ADanalytical column, 1.0 mL/min, 254 nm, IPA:HEX10:90
=====
```



=====  
Fraction Information  
=====

Fraction collection off

No Fractions found.  
=====

=====  
Area Percent Report  
=====

```
Sorted By      :      Signal
Multiplier     :      1.0000
Dilution       :      1.0000
Use Multiplier & Dilution Factor with ISTDs
```

Signal 1: VWD1 A, Wavelength=254 nm

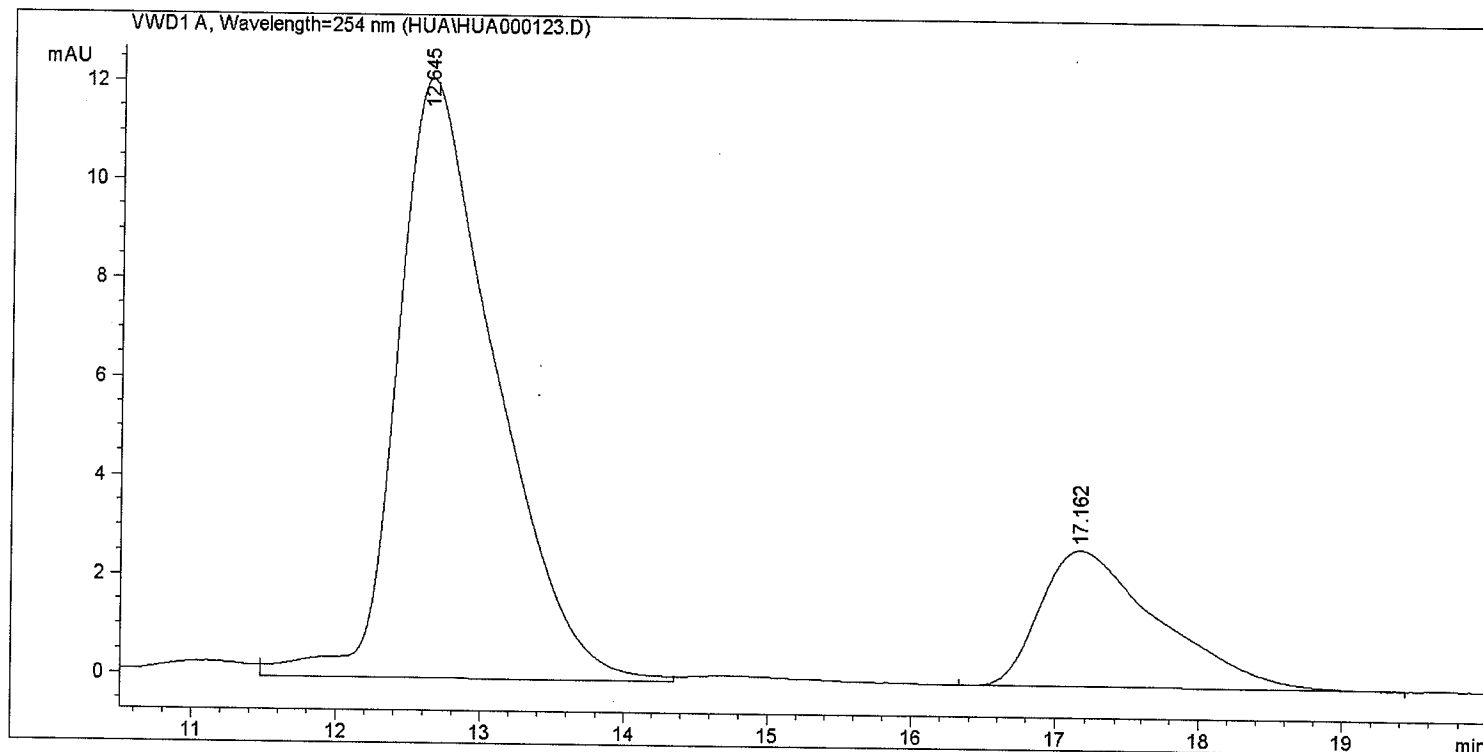
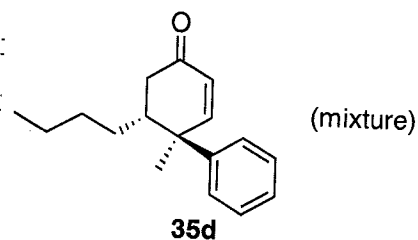
Peak #	RetTime [min]	Type	Width [min]	Area mAU *s	Height [mAU]	Area %
1	11.625	BB	0.6246	178.03656	4.23317	93.5549
2	14.223	BBA	0.7505	12.26510	2.32080e-1	6.4451

Sample Name: 14-45 mix

```

=====
Acq. Operator   : Hua                      Seq. Line : 1
Acq. Instrument : Instrument 1             Location  : Via
Injection Date  : 10/21/2009 1:07:56 PM   Inj       : 1
                                           Inj Volume: 5 µl
Acq. Method     : C:\CHEM32\1\METHODS\022008CW.M
Last changed    : 10/21/2009 1:06:03 PM by Hua
Analysis Method : C:\CHEM32\1\METHODS\HUA.M
Last changed    : 3/15/2010 7:30:28 PM by CHAO
                  (modified after loading)
Method Info     : ADanalytical column, 1.0 mL/min, 254 nm, IPA:HEX10:90
=====

```



```

=====
Fraction Information
=====

```

```

Fraction collection off
=====

```

```

No Fractions found.
=====

```

```

=====
Area Percent Report
=====

```

```

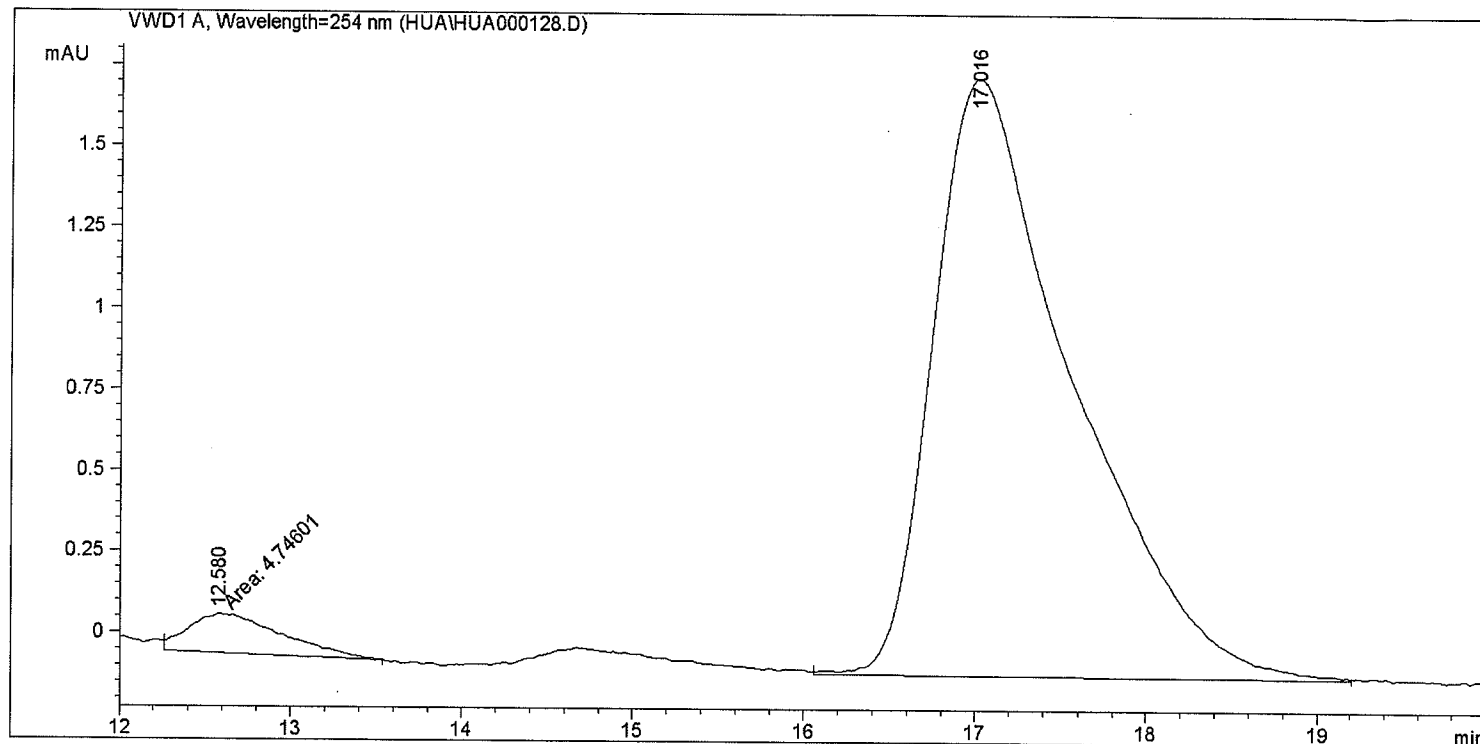
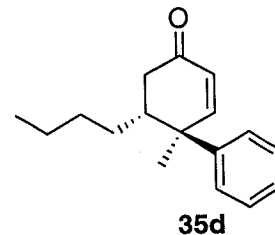
Sorted By      : Signal
Multiplier     : 1.0000
Dilution       : 1.0000
Use Multiplier & Dilution Factor with ISTDs

```

Signal 1: VWD1 A, Wavelength=254 nm

Peak #	RetTime [min]	Type	Width [min]	Area mAU	Area %	Height [mAU]
1	12.645	VV	0.6870	576.06317	78.3915	12.15295
2	17.162	VB	0.8334	158.79095	21.6085	2.76386

```
=====
Acq. Operator   : Hua                      Seq. Line :    1
Acq. Instrument : Instrument 1             Location  : Vial-1
Injection Date  : 10/21/2009 2:05:50 PM    Inj       :    1
                                           Inj Volume: 5 µl
Acq. Method     : C:\CHEM32\1\METHODS\022008CW.M
Last changed    : 10/21/2009 1:06:03 PM by Hua
Analysis Method : C:\CHEM32\1\METHODS\HUA.M
Last changed    : 3/15/2010 7:32:54 PM by CHAO
                  (modified after loading)
Method Info     : ADanalytical column, 1.0 mL/min, 254 nm, IPA:HEX10:90
=====
```



=====  
Fraction Information  
=====

Fraction collection off  
=====

No Fractions found.  
=====

=====  
Area Percent Report  
=====

```
Sorted By      :      Signal
Multiplier     :      1.0000
Dilution       :      1.0000
Use Multiplier & Dilution Factor with ISTDs
```

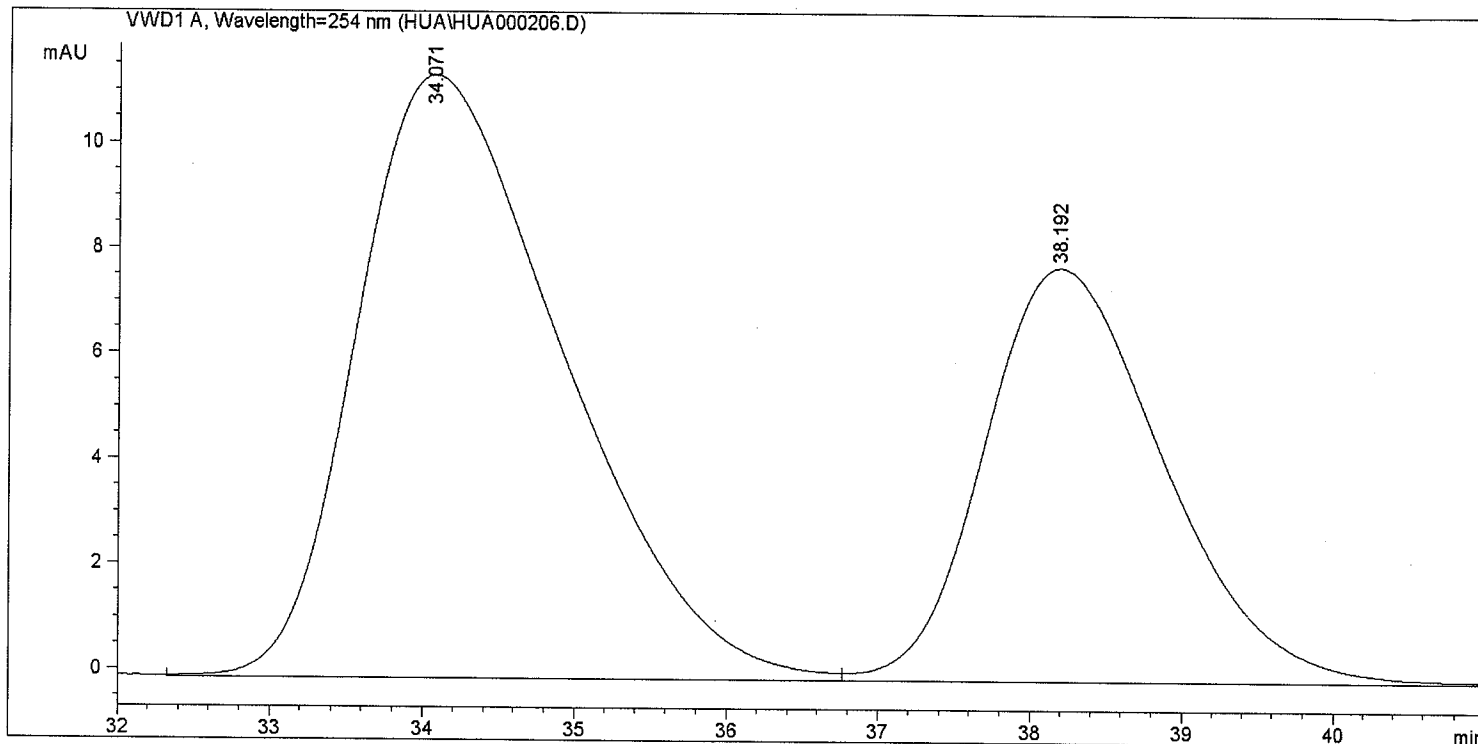
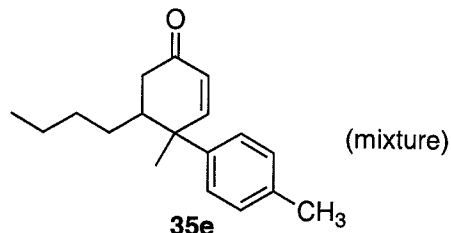
Signal 1: VWD1 A, Wavelength=254 nm

Peak #	RetTime [min]	Type	Width [min]	Area mAU*s	Height [mAU]	Area %
1	12.580	MM	0.6428	4.74601	1.23059e-1	4.3415
2	17.016	VB	0.8201	104.57047	1.84049	95.6585

=====

Acq. Operator	: HUA	Seq. Line	:
Acq. Instrument	: Instrument 1	Location	:
Injection Date	: 11/13/2009 5:57:39 PM	Inj	:
		Inj Volume	:
Acq. Method	: C:\CHEM32\1\METHODS\022008CW.M		
Last changed	: 11/13/2009 5:55:38 PM by HUA		
Analysis Method	: C:\CHEM32\1\METHODS\HUA.M		
Last changed	: 3/15/2010 7:35:03 PM by CHAO		
	(modified after loading)		
Method Info	: ADanalytical column, 1.0 mL/min, 254 nm, IPA:HEX10:90		

=====



=====

Fraction Information

=====

Fraction collection off

=====

No Fractions found.

=====

Area Percent Report

=====

Sorted By : Signal  
Multiplier : 1.0000  
Dilution : 1.0000  
Use Multiplier & Dilution Factor with ISTDs

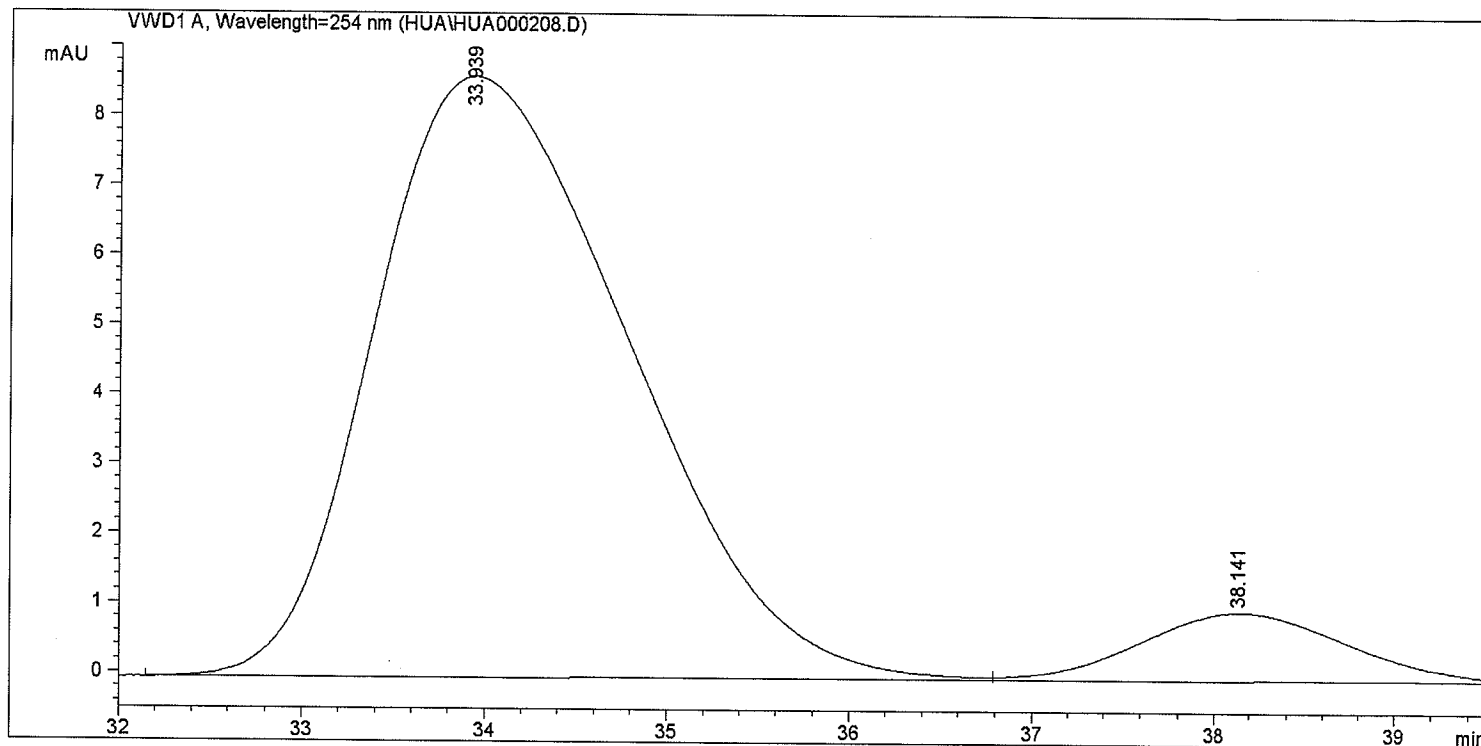
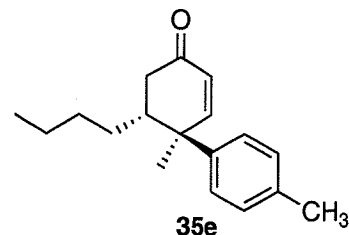
Signal 1: VWD1 A, Wavelength=254 nm

Peak #	RetTime [min]	Type	Width [min]	Area mAU	Height [mAU]	Area %
1	34.071	VV	1.4340	1082.38135	11.45858	62.4364
2	38.192	VB	1.2800	651.19427	7.86897	37.5636

```
=====
Acq. Operator   : HUA                      Seq. Line :    1
Acq. Instrument : Instrument 1              Location  : Vial
Injection Date  : 11/13/2009 8:47:25 PM    Inj       :    1
                                           Inj Volume: 5 µl

Acq. Method     : C:\CHEM32\1\METHODS\022008CW.M
Last changed    : 11/13/2009 5:55:38 PM by HUA
Analysis Method : C:\CHEM32\1\METHODS\HUA.M
Last changed    : 3/15/2010 7:36:26 PM by CHAO
                  (modified after loading)

Method Info     : ADanalytical column, 1.0 mL/min, 254 nm, IPA:HE
=====
```



=====  
Fraction Information  
=====

Fraction collection off

=====  
No Fractions found.  
=====

=====  
Area Percent Report  
=====

Sorted By : Signal  
Multiplier : 1.0000  
Dilution : 1.0000  
Use Multiplier & Dilution Factor with ISTDs

Signal 1: VWD1 A, Wavelength=254 nm

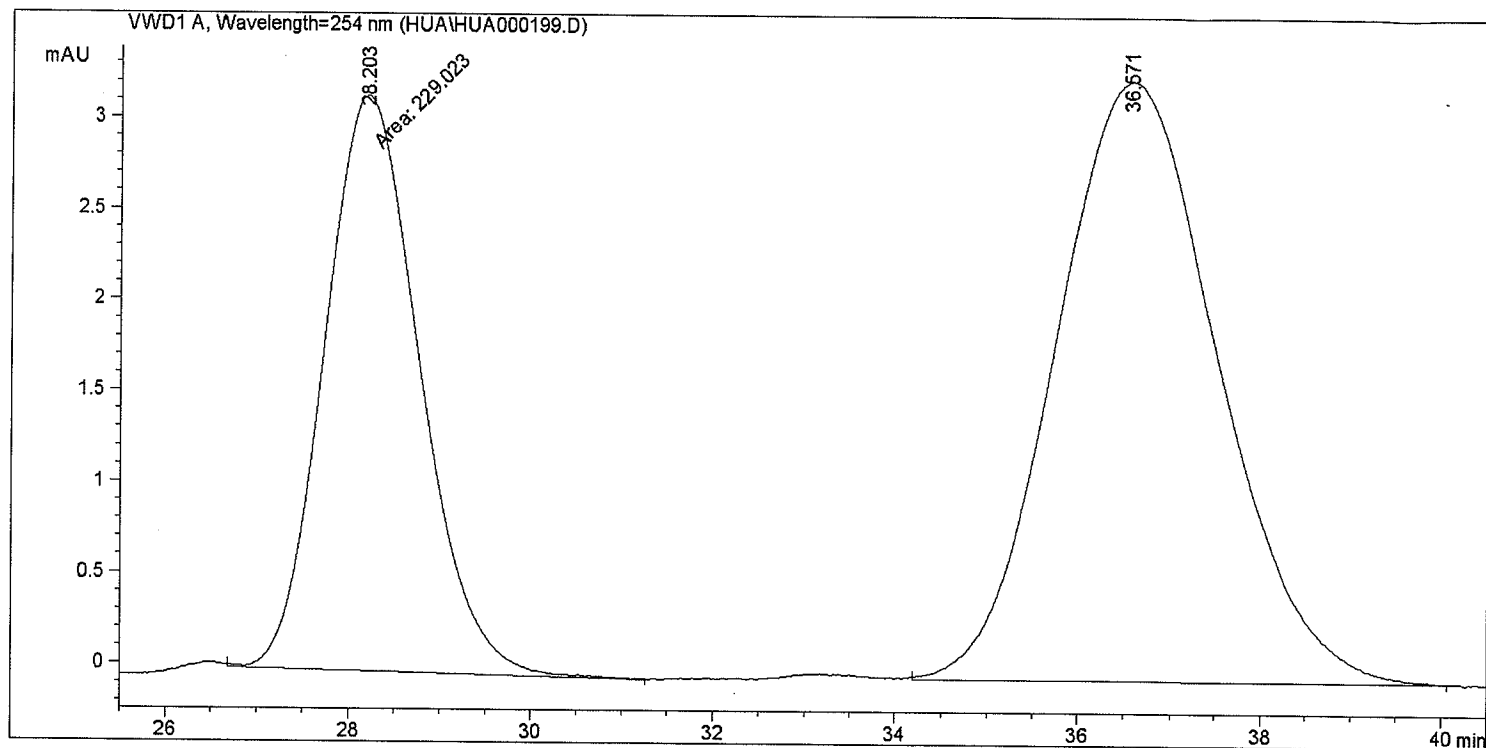
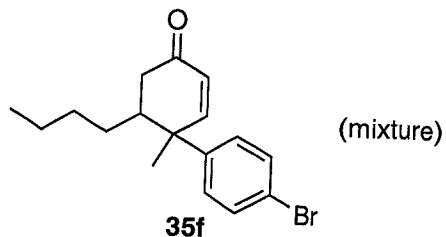
Peak #	RetTime [min]	Type	Width [min]	Area mAU *s	Height [mAU]	Area %
1	33.939	VV	1.5607	836.48260	8.63813	91.4711
2	38.141	VBA	1.2410	77.99489	9.82175e-1	8.5289

Sample Name: 14-71 mix

```

=====
Acq. Operator   : HUA                      Seq. Line :
Acq. Instrument : Instrument 1              Location  : V
Injection Date  : 11/12/2009 8:46:47 PM    Inj       :
                                           Inj Volume: 5
Acq. Method     : C:\CHEM32\1\METHODS\022008CW.M
Last changed    : 11/12/2009 3:28:38 PM by HUA
Analysis Method : C:\CHEM32\1\METHODS\HUA.M
Last changed    : 3/15/2010 7:36:34 PM by CHAO
                  (modified after loading)
Method Info     : ADanalytical column, 1.0 mL/min, 254 nm, IPA:HEX:10:90
=====

```



```

=====
Fraction Information
=====

```

Fraction collection off

No Fractions found.

```

=====
Area Percent Report
=====

```

```

Sorted By      : Signal
Multiplier     : 1.0000
Dilution       : 1.0000
Use Multiplier & Dilution Factor with ISTDs

```

Signal 1: VWD1 A, Wavelength=254 nm

Peak #	RetTime [min]	Type	Width [min]	Area mAU*s	Height [mAU]	Area %
1	28.203	MM	1.2065	229.02348	3.16382	36.0976
2	36.571	BB	1.8783	405.43280	3.29458	63.9024

Sample Name: 14-72

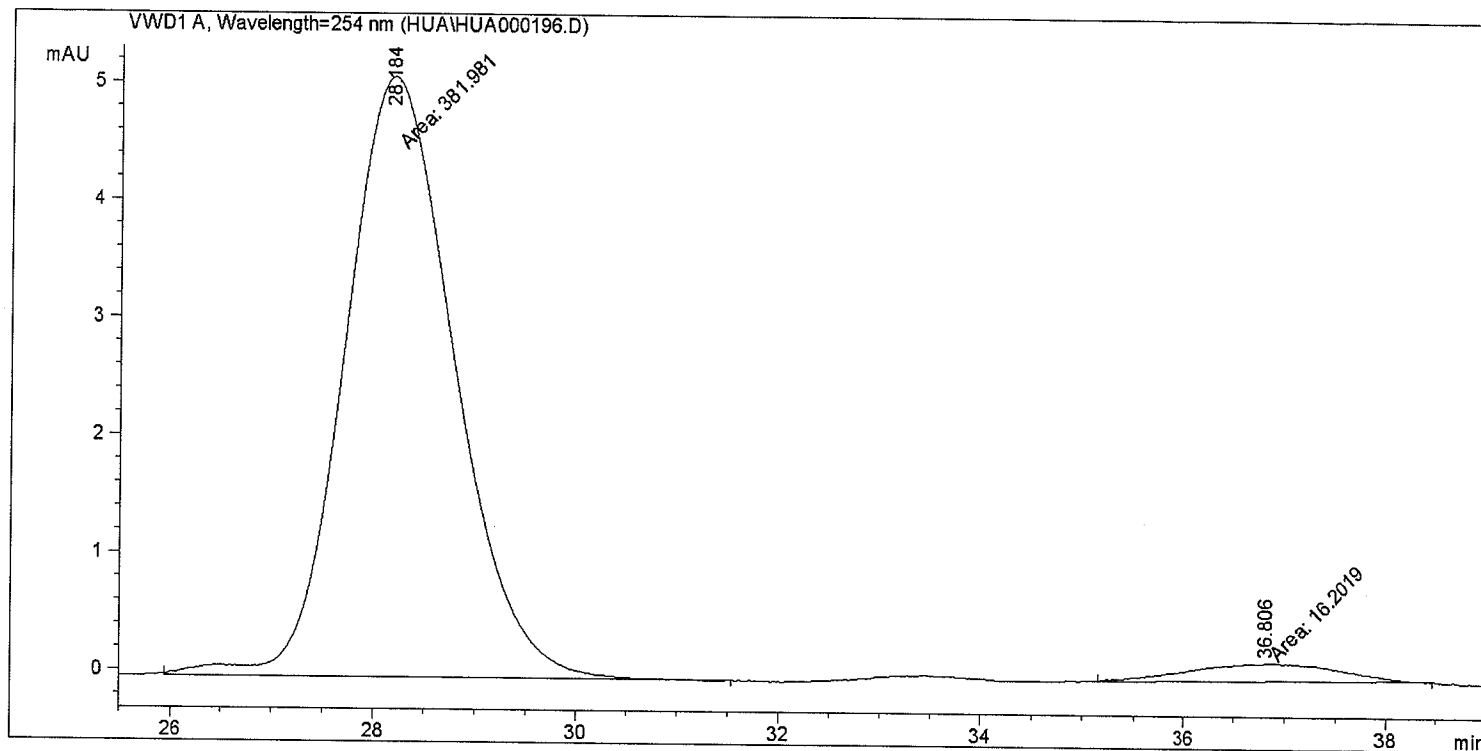
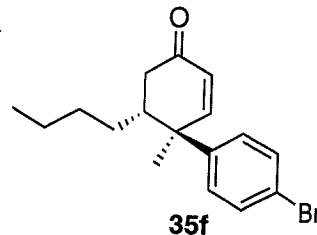
```

=====
Acq. Operator   : HUA                               Seq. Line : 1
Acq. Instrument : Instrument 1                       Location  : Vial 1
Injection Date  : 11/12/2009 4:47:24 PM              Inj       : 1
                                                    Inj Volume: 5 µl

Acq. Method     : C:\CHEM32\1\METHODS\022008CW.M
Last changed    : 11/12/2009 3:28:38 PM by HUA
Analysis Method : C:\CHEM32\1\METHODS\HUA.M
Last changed    : 3/15/2010 7:39:48 PM by CHAO
                  (modified after loading)

Method Info     : ADanalytical column, 1.0 mL/min, 254 nm, IPA:HEX10:90
=====

```



```

=====
Fraction Information
=====

```

```

Fraction collection off
=====

```

```

No Fractions found.
=====

```

```

=====
Area Percent Report
=====

```

```

Sorted By      : Signal
Multiplier     : 1.0000
Dilution       : 1.0000
Use Multiplier & Dilution Factor with ISTDs

```

Signal 1: VWD1 A, Wavelength=254 nm

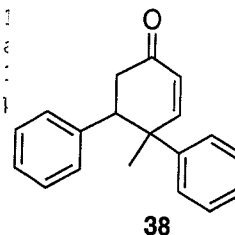
Peak #	RetTime [min]	Type	Width [min]	Area mAU*s	Height [mAU]	Area %
1	28.184	MM	1.2459	381.98132	5.10981	95.9310
2	36.806	MM	1.7635	16.20193	1.53122e-1	4.0690



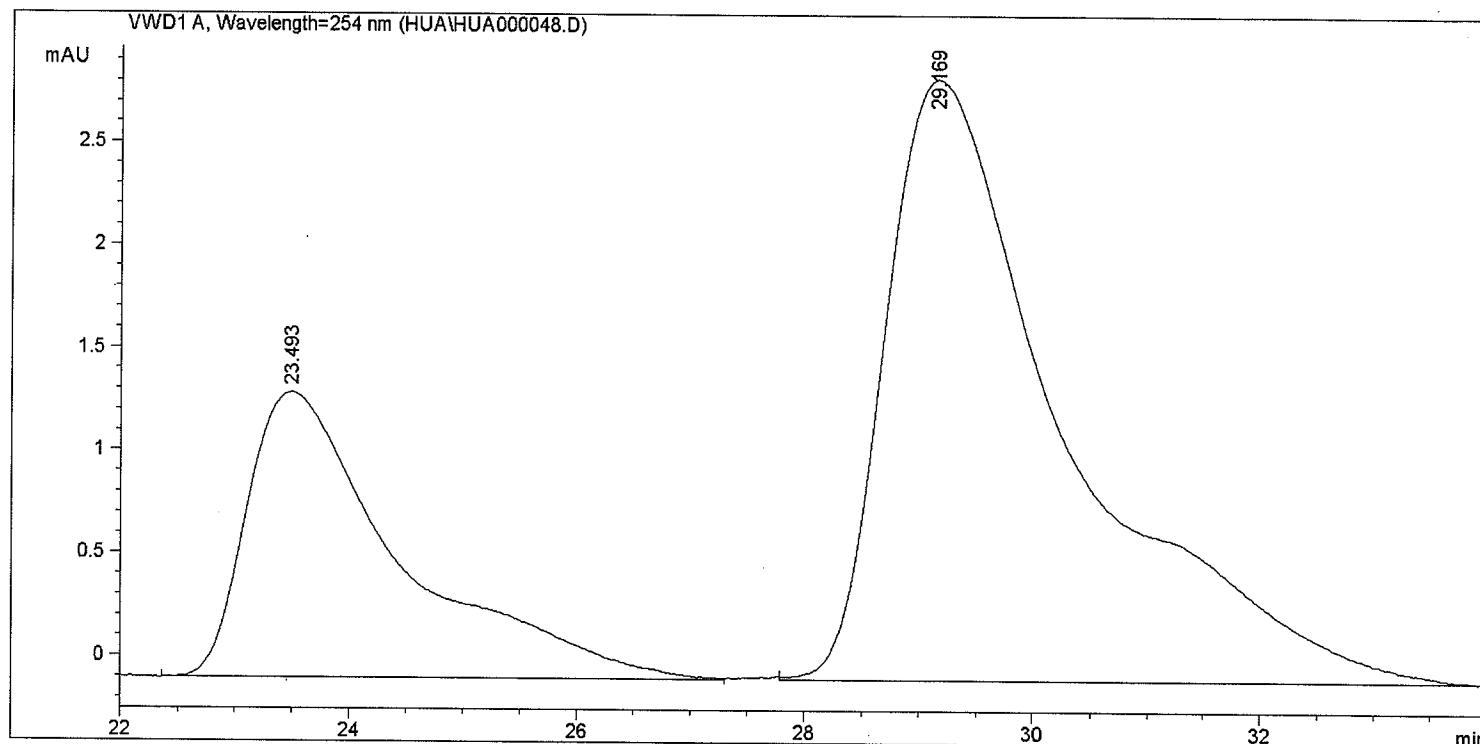
Sample Name: 13-96mix

```
=====
Acq. Operator   : Hua                      Seq. Line : 1
Acq. Instrument : Instrument 1             Location  : Via
Injection Date  : 9/25/2009 2:02:26 PM    Inj       :
Inj Volume     : 5 µl                    Inj Volume: 5 µl

Acq. Method     : C:\CHEM32\1\METHODS\022008CW.M
Last changed    : 9/25/2009 2:00:26 PM by Hua
Analysis Method : C:\CHEM32\1\METHODS\HUA.M
Last changed    : 3/15/2010 7:40:47 PM by CHAO
                  (modified after loading)
Method Info     : ADanalytical column, 1.0 mL/min, 254 nm, IPA:HEX10:90
=====
```



(mixture)



# Fraction Information

Fraction collection off

No Fractions found.

# Area Percent Report

```
Sorted By      : Signal
Multiplier     : 1.0000
Dilution       : 1.0000
Use Multiplier & Dilution Factor with ISTDs
```

Signal 1: VWD1 A, Wavelength=254 nm

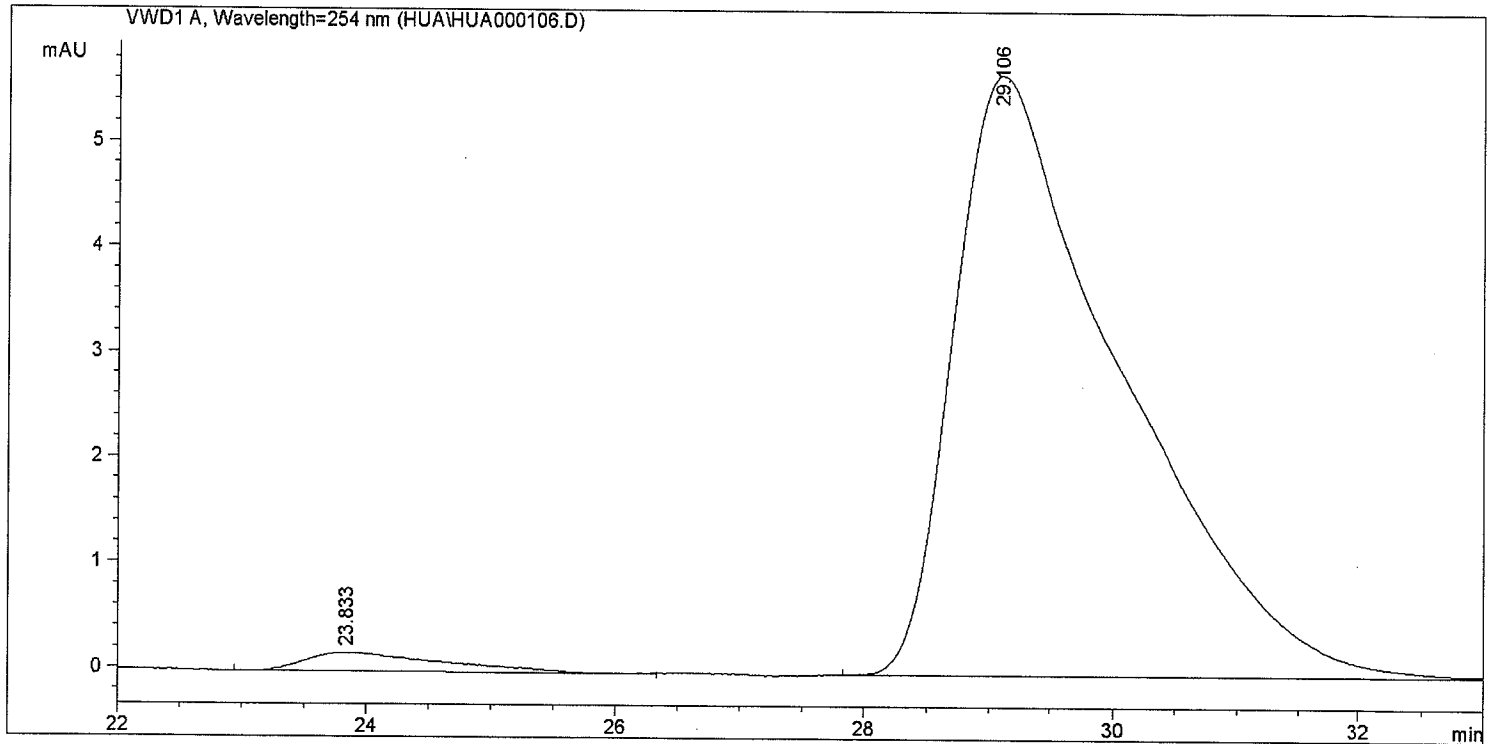
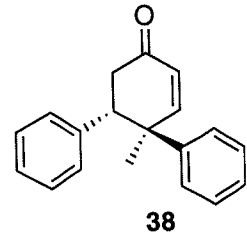
Peak #	RetTime [min]	Type	Width [min]	Area mAU *s	Height [mAU]	Area %
1	23.493	BB	1.3267	129.00116	1.39086	28.7451
2	29.169	BB	1.5678	319.77557	2.92245	71.2549

Sample Name: 14-37

```
=====
Acq. Operator   : Hua                      Seq. Line :    1
Acq. Instrument : Instrument 1              Location  : Vial 1
Injection Date  : 10/15/2009 7:37:53 PM    Inj       :    1
                                           Inj Volume: 5 µl

Acq. Method     : C:\CHEM32\1\METHODS\022008CW.M
Last changed    : 10/15/2009 5:01:03 PM by Hua
Analysis Method : C:\CHEM32\1\METHODS\HUA.M
Last changed    : 3/15/2010 7:41:50 PM by CHAO
                  (modified after loading)

Method Info     : ADanalytical column, 1.0 mL/min, 254 nm, IPA:HEX10:90
=====
```



=====  
Fraction Information  
=====

Fraction collection off

No Fractions found.

=====  
Area Percent Report  
=====

```
Sorted By      :      Signal
Multiplier     :      1.0000
Dilution       :      1.0000
Use Multiplier & Dilution Factor with ISTDs
```

Signal 1: VWD1 A, Wavelength=254 nm

Peak #	RetTime [min]	Type	Width [min]	Area mAU *s	Height [mAU]	Area %
1	23.833	BB	1.0435	13.80718	1.77099e-1	2.5058
2	29.106	BB	1.3256	537.20923	5.70541	97.4942

Sample Name: 14-3 mix

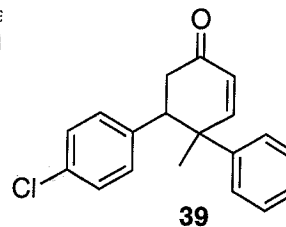
```

=====
Acq. Operator   : Hua                      Seq. Line :    1
Acq. Instrument : Instrument 1             Location  : Via
Injection Date  : 9/29/2009 5:53:14 PM    Inj       :    1
                                           Inj Volume: 5 µl

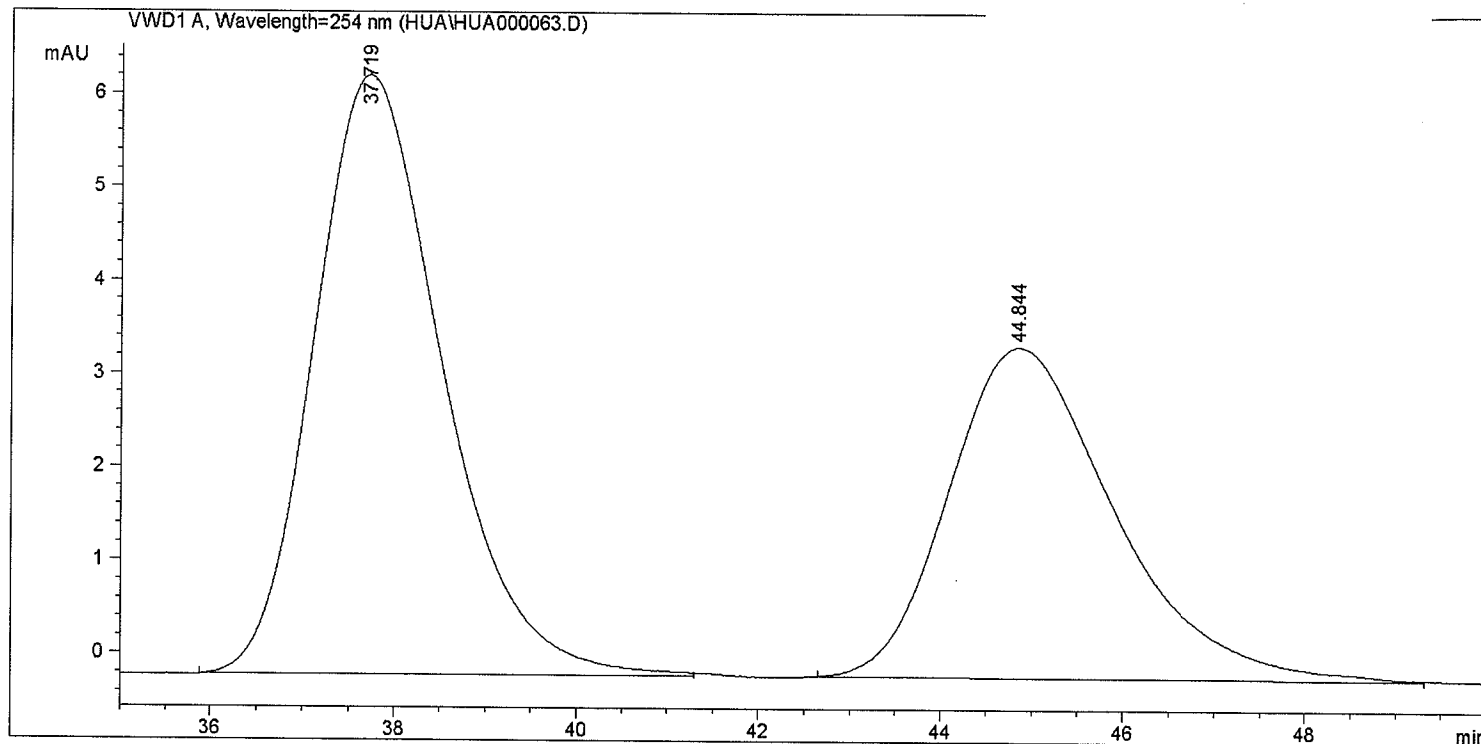
Acq. Method     : C:\CHEM32\1\METHODS\022008CW.M
Last changed    : 9/29/2009 5:00:17 PM by Hua
Analysis Method : C:\CHEM32\1\METHODS\HUA.M
Last changed    : 3/15/2010 7:42:49 PM by CHAO
                  (modified after loading)

Method Info     : ADanalytical column, 1.0 mL/min, 254 nm, IPA:1
=====

```



(mixture)



```

=====
Fraction Information
=====

```

Fraction collection off

No Fractions found.

```

=====
Area Percent Report
=====

```

```

Sorted By      : Signal
Multiplier     : 1.0000
Dilution       : 1.0000
Use Multiplier & Dilution Factor with ISTDs

```

Signal 1: VWD1 A, Wavelength=254 nm

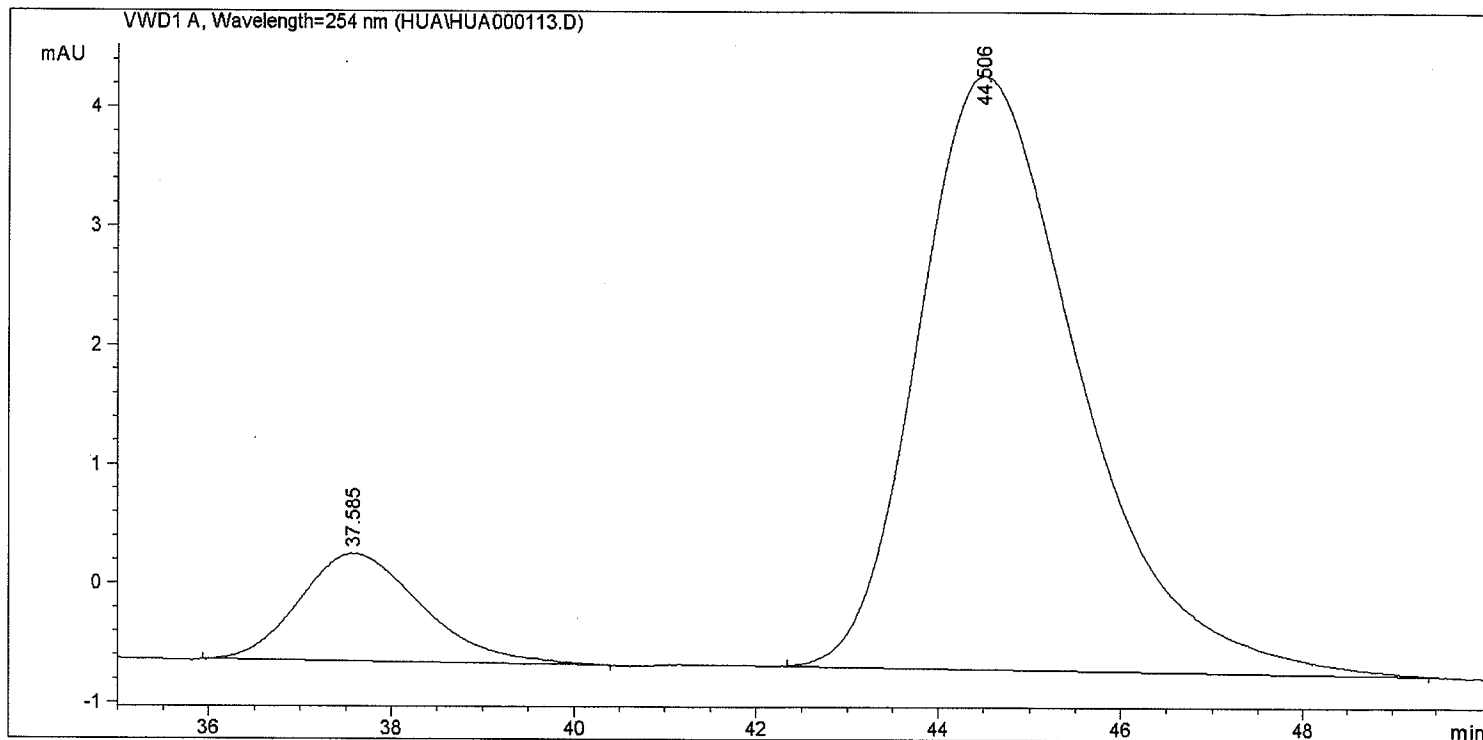
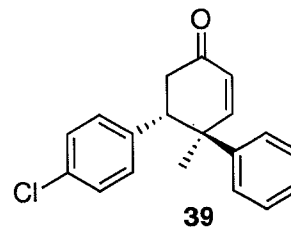
Peak #	RetTime [min]	Type	Width [min]	Area mAU*s	Height [mAU]	Area %
1	37.719	BB	1.5028	625.80396	6.42740	58.3159
2	44.844	BB	1.8810	447.32410	3.54212	41.6841

Sample Name: 14-34

```
=====
Acq. Operator   : HUA                      Seq. Line :    1
Acq. Instrument : Instrument 1              Location  : Vial 1
Injection Date  : 10/18/2009 9:00:42 PM    Inj       :    1
                                           Inj Volume: 5 µl

Acq. Method     : C:\CHEM32\1\METHODS\022008CW.M
Last changed    : 10/18/2009 8:58:45 PM by HUA
Analysis Method : C:\CHEM32\1\METHODS\HUA.M
Last changed    : 3/15/2010 7:44:47 PM by CHAO
                  (modified after loading)

Method Info     : ADanalytical column, 1.0 mL/min, 254 nm, IPA:HEX10:90
=====
```



=====  
Fraction Information  
=====

Fraction collection off

No Fractions found.

=====  
Area Percent Report  
=====

```
Sorted By      :      Signal
Multiplier     :      1.0000
Dilution       :      1.0000
Use Multiplier & Dilution Factor with ISTDs
```

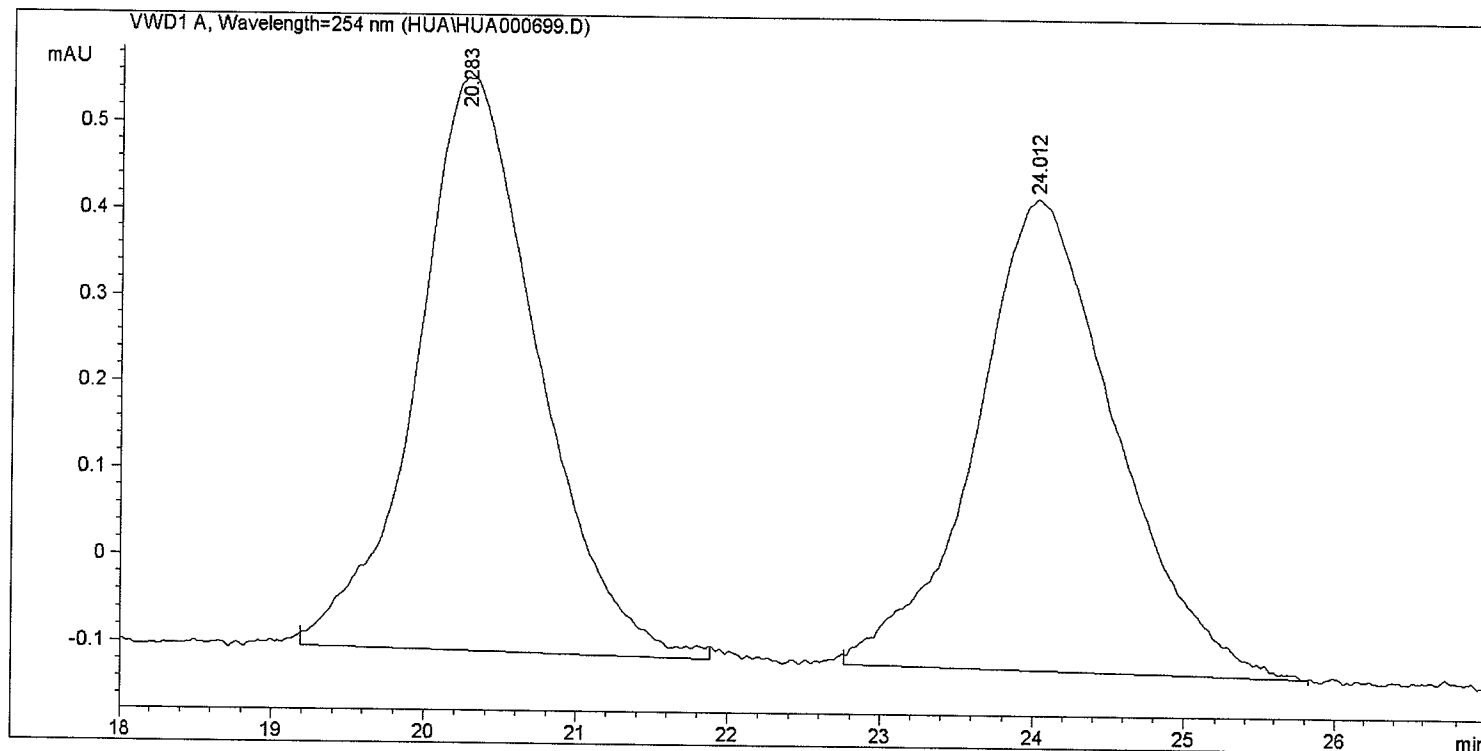
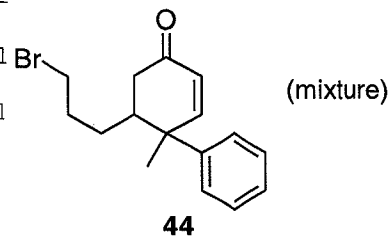
Signal 1: VWD1 A, Wavelength=254 nm

Peak #	RetTime [min]	Type	Width [min]	Area mAU *s	Height [mAU]	Area %
1	37.585	BB	1.3767	85.15369	9.05517e-1	12.2267
2	44.506	BB	1.8555	611.30365	4.98627	87.7733

=====

Acq. Operator	: Chris	Seq. Line	: 1
Acq. Instrument	: Instrument 1	Location	: Vial
Injection Date	: 2/23/2010 1:32:03 PM	Inj	: 1
		Inj Volume	: 5 µl
Acq. Method	: C:\CHEM32\1\METHODS\HUA.M		
Last changed	: 2/23/2010 1:30:03 PM by Chris		
Analysis Method	: C:\CHEM32\1\METHODS\HUA.M		
Last changed	: 3/15/2010 7:45:04 PM by CHAO		
	(modified after loading)		
Method Info	: ADanalytical column, 1.0 mL/min, 254 nm, IPA:HEX10:90		

=====



=====

Fraction Information

=====

Fraction collection off

No Fractions found.

=====

Area Percent Report

=====

Sorted By : Signal  
Multiplier : 1.0000  
Dilution : 1.0000  
Use Multiplier & Dilution Factor with ISTDs

Signal 1: VWD1 A, Wavelength=254 nm

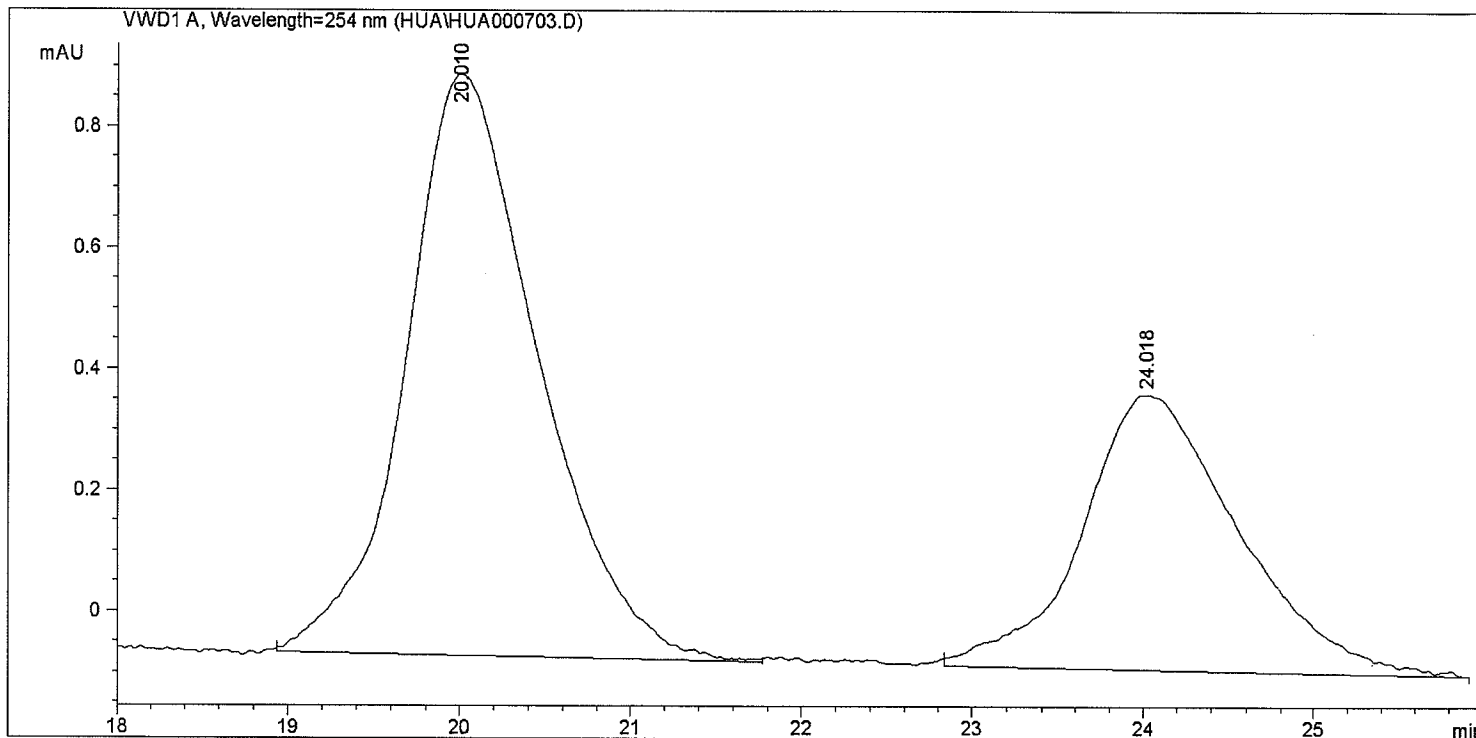
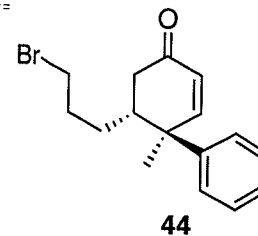
Peak #	RetTime [min]	Type	Width [min]	Area mAU *s	Height [mAU]	Area %
1	20.283	BB	0.8339	36.67739	6.60828e-1	51.1423
2	24.012	BB	0.9685	35.03900	5.42867e-1	48.8577

Sample Name: 15-57

```
=====
Acq. Operator   : Chris                      Seq. Line :    1
Acq. Instrument : Instrument 1                Location  : Vial 1
Injection Date  : 2/23/2010 2:06:58 PM        Inj       :    1
                                           Inj Volume: 5 µl

Acq. Method     : C:\CHEM32\1\METHODS\HUA.M
Last changed    : 2/23/2010 1:30:03 PM by Chris
Analysis Method : C:\CHEM32\1\METHODS\HUA.M
Last changed    : 3/15/2010 7:45:59 PM by CHAO
                  (modified after loading)

Method Info     : ADanalytical column, 1.0 mL/min, 254 nm, IPA:HEX10:90
=====
```



```
=====
Fraction Information
=====
```

Fraction collection off

No Fractions found.

```
=====
Area Percent Report
=====
```

```
Sorted By      :      Signal
Multiplier     :      1.0000
Dilution       :      1.0000
Use Multiplier & Dilution Factor with ISTDs
```

Signal 1: VWD1 A, Wavelength=254 nm

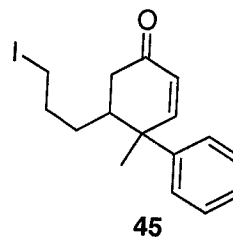
Peak #	RetTime [min]	Type	Width [min]	Area mAU	Height [mAU]	Area %
1	20.010	BB	0.7932	51.40913	9.60672e-1	63.7737
2	24.018	BBA	0.9581	29.20273	4.55184e-1	36.2263

Sample Name: 15-10mix

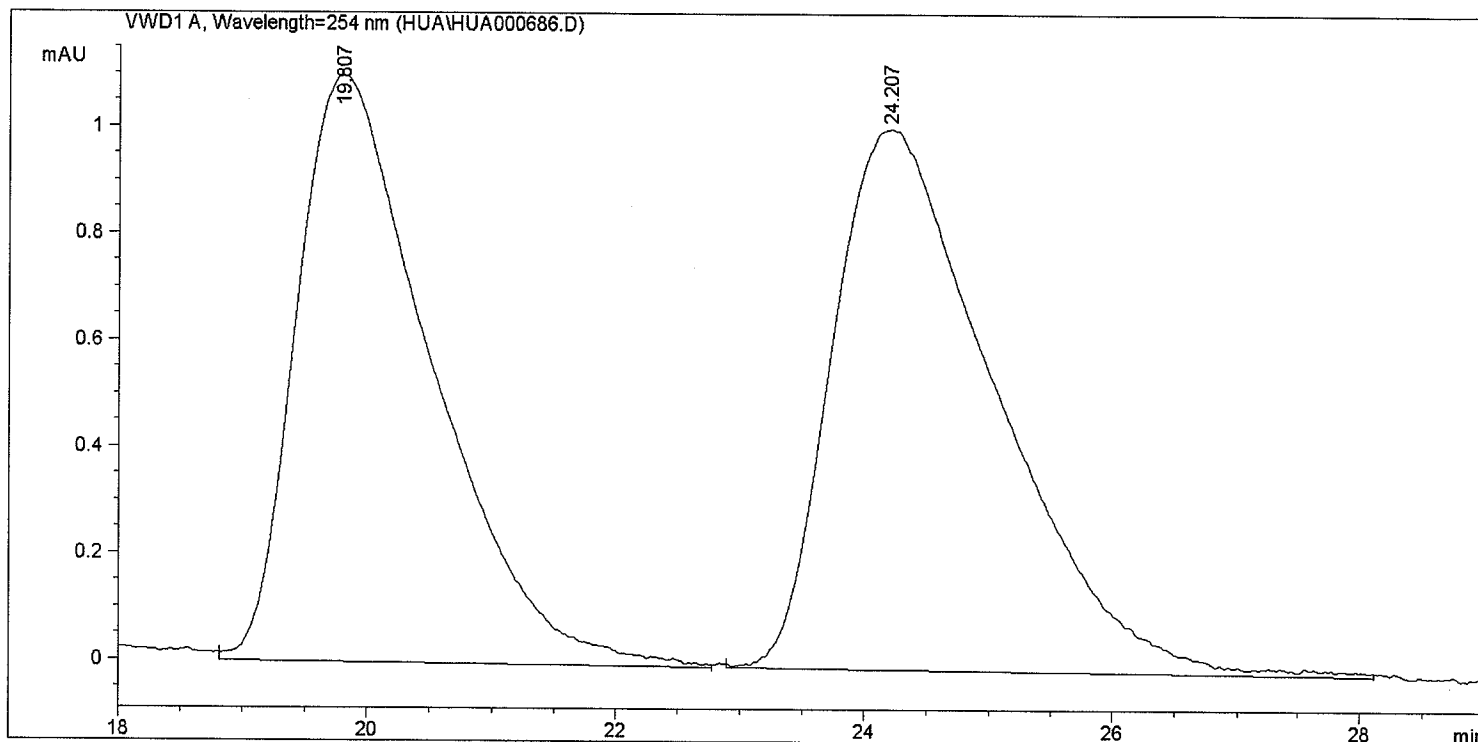
=====

Acq. Operator : HUA  
 Acq. Instrument : Instrument 1  
 Injection Date : 2/9/2010 4:42:57 PM  
 Acq. Method : C:\CHEM32\1\METHODS\HUA.M  
 Last changed : 2/9/2010 4:40:50 PM by HUA  
 Analysis Method : C:\CHEM32\1\METHODS\HUA.M  
 Last changed : 3/15/2010 7:46:48 PM by CHAO  
 (modified after loading)  
 Method Info : ADanalytical column, 1.0 mL/min, 254 nm, IPA:HEX10:90

Seq. Line : 1  
 Location : Vial  
 Inj : 1  
 Inj Volume : 5 µl



(mixture)



=====

Fraction Information

Fraction collection off

No Fractions found.

=====

Area Percent Report

Sorted By : Signal  
 Multiplier : 1.0000  
 Dilution : 1.0000  
 Use Multiplier & Dilution Factor with ISTDs

Signal 1: VWD1 A, Wavelength=254 nm

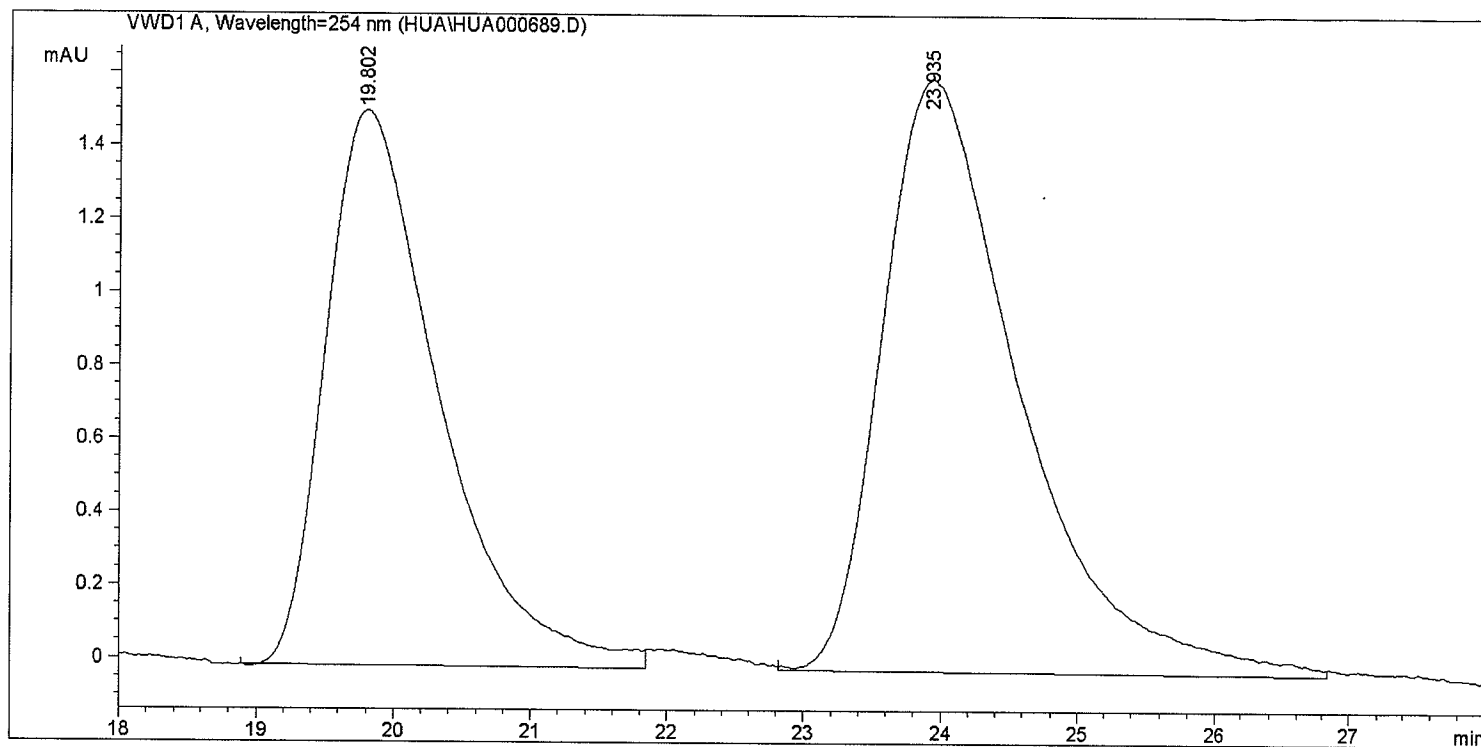
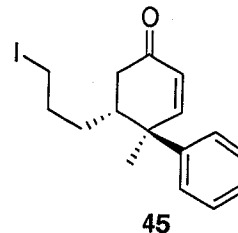
Peak #	RetTime [min]	Type	Width [min]	Area mAU *s	Height [mAU]	Area %
1	19.807	VB	1.0913	83.10751	1.09980	47.0590
2	24.207	BB	1.3718	93.49527	1.01491	52.9410

Sample Name: 15-32

```
=====
Acq. Operator   : HUA                               Seq. Line :    1
Acq. Instrument : Instrument 1                       Location  : Vial 1
Injection Date  : 2/10/2010 10:56:05 AM              Inj       :    1
                                                    Inj Volume: 5 µl

Acq. Method     : C:\CHEM32\1\METHODS\HUA.M
Last changed    : 2/10/2010 10:16:26 AM by HUA
Analysis Method : C:\CHEM32\1\METHODS\HUA.M
Last changed    : 3/15/2010 7:47:55 PM by CHAO
                  (modified after loading)

Method Info     : ADanalytical column, 1.0 mL/min, 254 nm, IPA:HEX10:90
=====
```



```
=====
Fraction Information
=====
```

Fraction collection off

No Fractions found.

```
=====
Area Percent Report
=====
```

```
Sorted By      :      Signal
Multiplier     :      1.0000
Dilution       :      1.0000
Use Multiplier & Dilution Factor with ISTDs
```

Signal 1: VWD1 A, Wavelength=254 nm

Peak #	RetTime [min]	Type	Width [min]	Area mAU*s	Height [mAU]	Area %
1	19.802	BB	0.8494	86.94116	1.51655	43.3616
2	23.935	BB	1.0397	113.56128	1.61898	56.6384



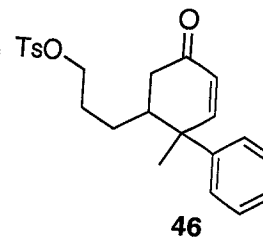
Sample Name: 15-2mix

=====

Acq. Operator : HUA  
 Acq. Instrument : Instrument 1  
 Injection Date : 3/3/2010 4:38:05 PM

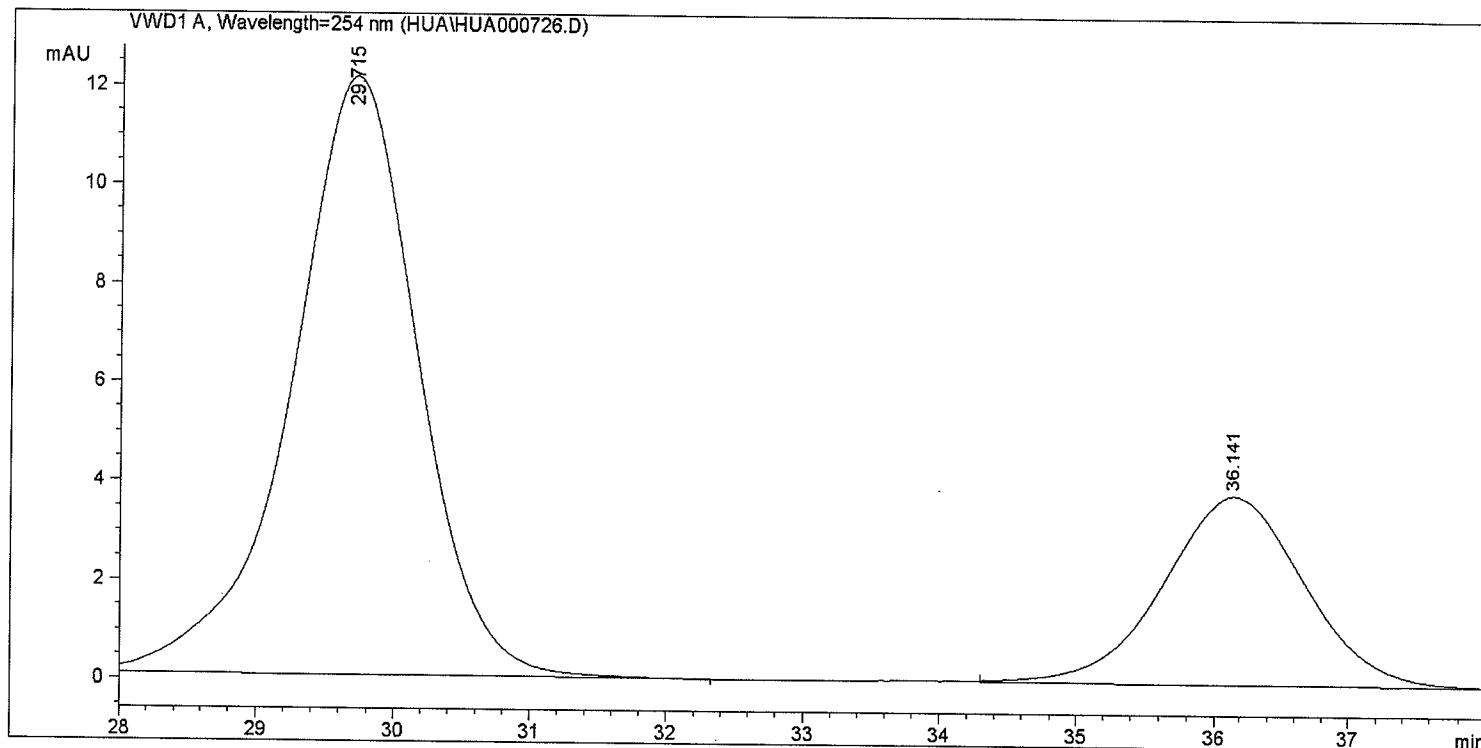
Acq. Method : C:\CHEM32\1\METHODS\HUA.M  
 Last changed : 3/3/2010 3:48:56 PM by HUA  
 Analysis Method : C:\CHEM32\1\METHODS\HUA.M  
 Last changed : 3/15/2010 7:51:01 PM by CHAO  
 (modified after loading)

Seq. Line : 1  
 Location : Vial  
 Inj : 1  
 Inj Volume : 5 µl



(mixture)

Method Info : ADanalytical column, 1.0 mL/min, 254 nm, IPA:HEX10:90



=====

Fraction Information

=====

Fraction collection off

=====

No Fractions found.

=====

Area Percent Report

Sorted By : Signal  
 Multiplier : 1.0000  
 Dilution : 1.0000  
 Use Multiplier & Dilution Factor with ISTDs

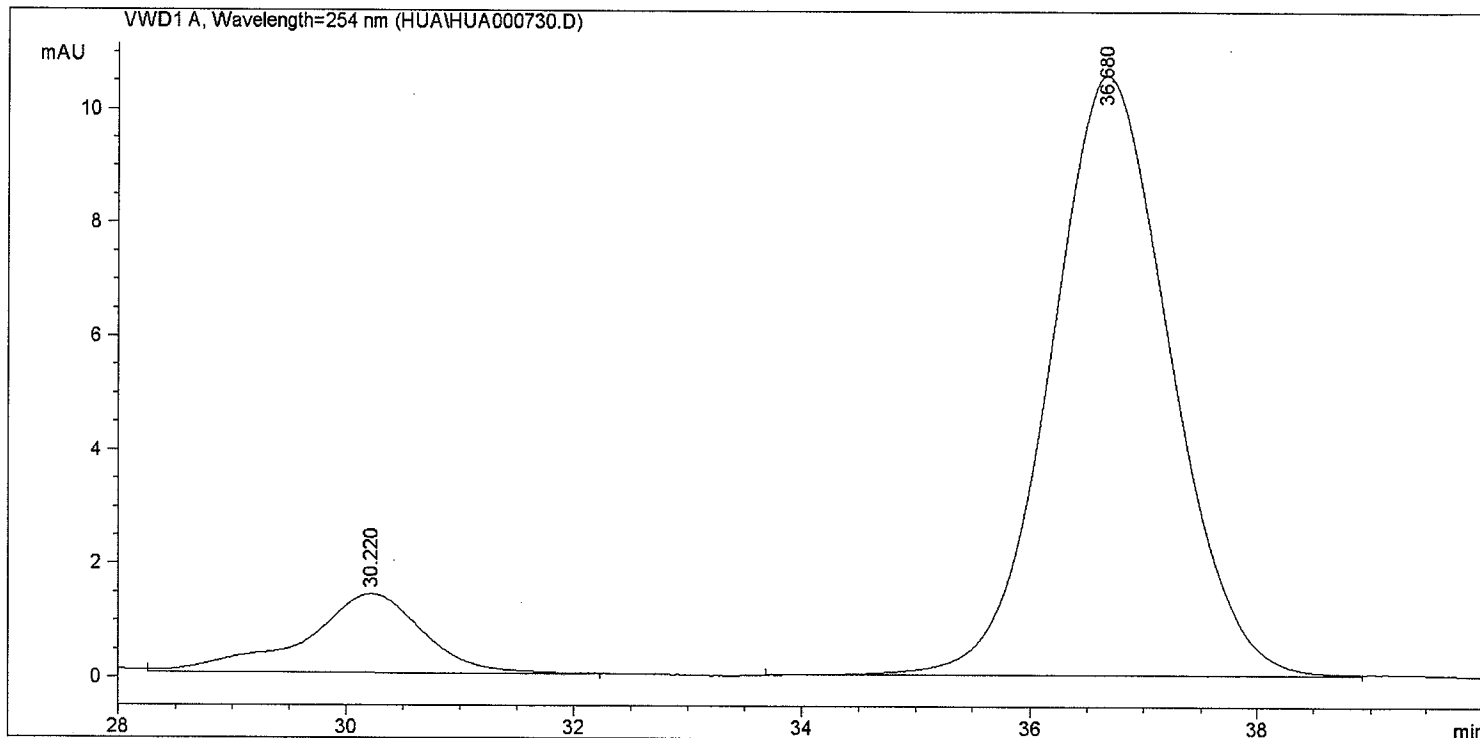
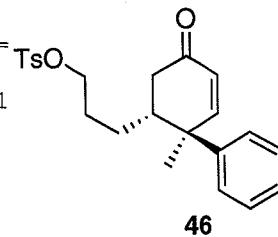
Signal 1: VWD1 A, Wavelength=254 nm

Peak #	RetTime [min]	Type	Width [min]	Area mAU	Area *s	Height [mAU]	Area %
1	29.715	VB	0.9738	774.17865	12.09683	73.6946	
2	36.141	BB	1.1255	276.34467	3.81127	26.3054	

Sample Name: 15-71

```
=====
Acq. Operator   : HUA                      Seq. Line :    1
Acq. Instrument : Instrument 1              Location  : Vial 1
Injection Date  : 3/3/2010 8:59:04 PM      Inj       :    1
                                           Inj Volume: 5 µl

Acq. Method     : C:\CHEM32\1\METHODS\HUA.M
Last changed    : 3/3/2010 3:48:56 PM by HUA
Analysis Method : C:\CHEM32\1\METHODS\HUA.M
Last changed    : 3/15/2010 7:48:57 PM by CHAO
                  (modified after loading)
Method Info     : ADanalytical column, 1.0 mL/min, 254 nm, IPA:HEX10:90
=====
```



=====  
Fraction Information  
=====

Fraction collection off

No Fractions found.  
=====

=====  
Area Percent Report  
=====

```
Sorted By      :      Signal
Multiplier     :      1.0000
Dilution       :      1.0000
Use Multiplier & Dilution Factor with ISTDs
```

Signal 1: VWD1 A, Wavelength=254 nm

Peak #	RetTime [min]	Type	Width [min]	Area mAU*s	Height [mAU]	Area %
1	30.220	VB	1.0701	102.06100	1.39324	11.7063
2	36.680	BB	1.1234	769.78766	10.56936	88.2937

Sample Name: 15-50mix

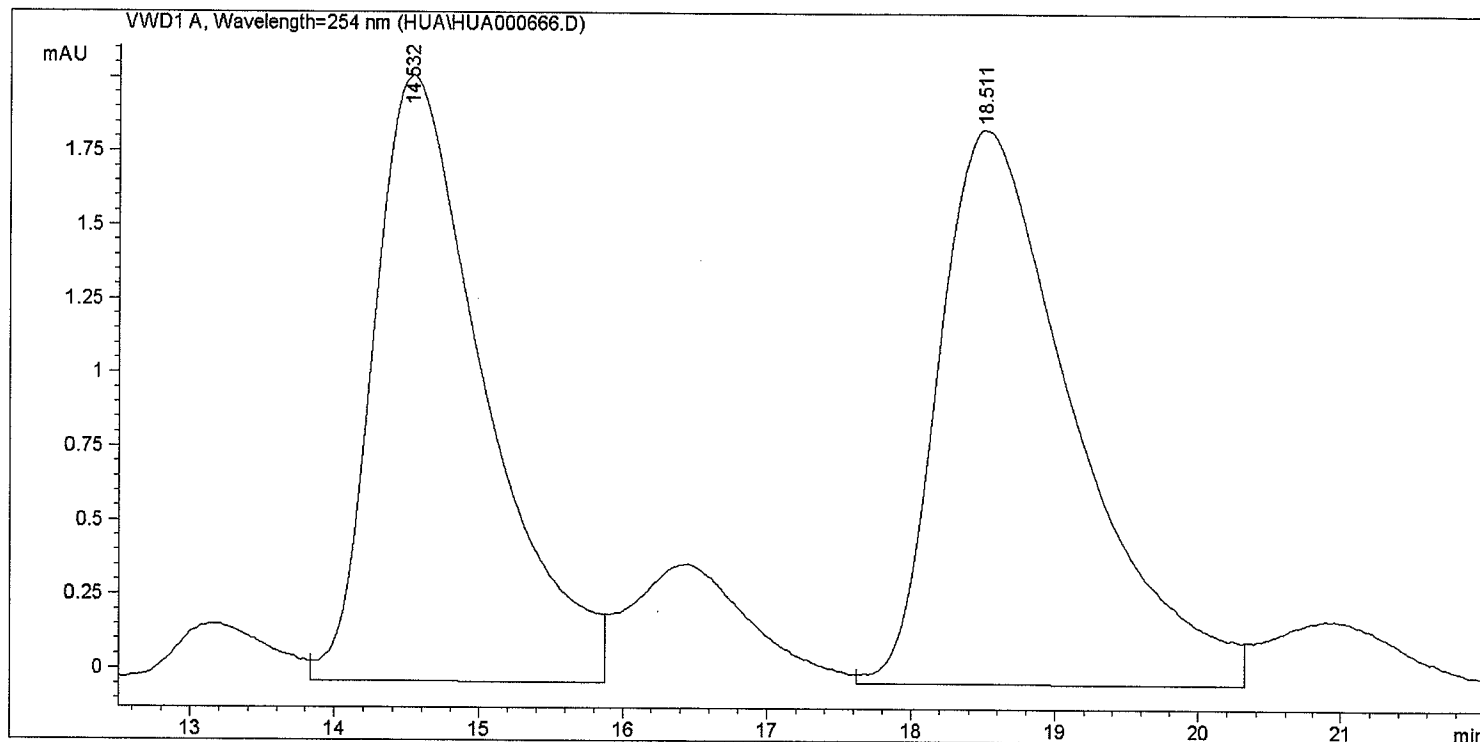
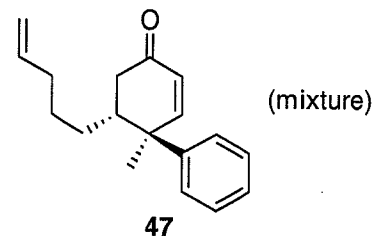
```

=====
Acq. Operator   : HUA                      Seq. Line :    1
Acq. Instrument : Instrument 1              Location  : Vial
Injection Date  : 2/8/2010 11:18:58 AM      Inj       :    1
                                           Inj Volume: 5 µl

Acq. Method     : C:\CHEM32\1\METHODS\HUA.M
Last changed    : 2/8/2010 11:16:50 AM by HUA
Analysis Method : C:\CHEM32\1\METHODS\HUA.M
Last changed    : 3/15/2010 7:51:14 PM by CHAO
                  (modified after loading)

Method Info     : ADanalytical column, 1.0 mL/min, 254 nm, IPA:HEX10:90
=====

```



```

=====
Fraction Information
=====

```

```

Fraction collection off
=====

```

```

No Fractions found.
=====

```

```

=====
Area Percent Report
=====

```

```

Sorted By      :      Signal
Multiplier     :      1.0000
Dilution       :      1.0000
Use Multiplier & Dilution Factor with ISTDs

```

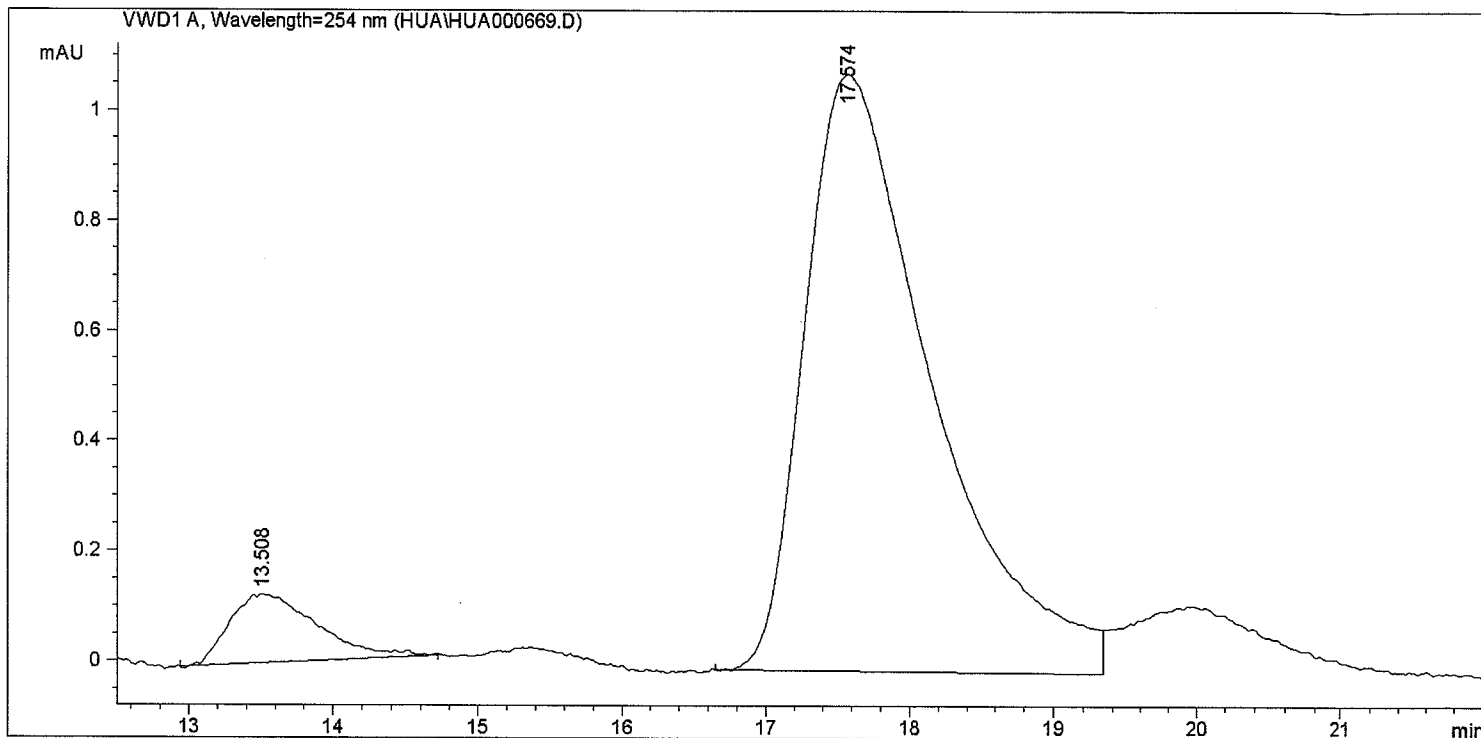
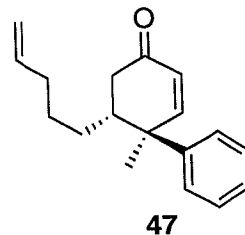
Signal 1: VWD1 A, Wavelength=254 nm

Peak #	RetTime [min]	Type	Width [min]	Area mAU*s	Height [mAU]	Area %
1	14.532	VV	0.7905	109.30397	2.05138	47.1774
2	18.511	VV	0.9761	122.38309	1.87725	52.8226

Sample Name: 15-51

```
=====
Acq. Operator   : HUA                               Seq. Line :    1
Acq. Instrument : Instrument 1                       Location  : Vial 1
Injection Date  : 2/8/2010 12:22:23 PM              Inj       :    1
                                                    Inj Volume: 5 µl

Acq. Method     : C:\CHEM32\1\METHODS\HUA.M
Last changed    : 2/8/2010 11:16:50 AM by HUA
Analysis Method : C:\CHEM32\1\METHODS\HUA.M
Last changed    : 3/15/2010 7:52:39 PM by CHAO
                  (modified after loading)
Method Info     : ADanalytical column, 1.0 mL/min, 254 nm, IPA:HEX10:90
=====
```



=====  
Fraction Information  
=====

Fraction collection off

No Fractions found.  
=====

=====  
Area Percent Report  
=====

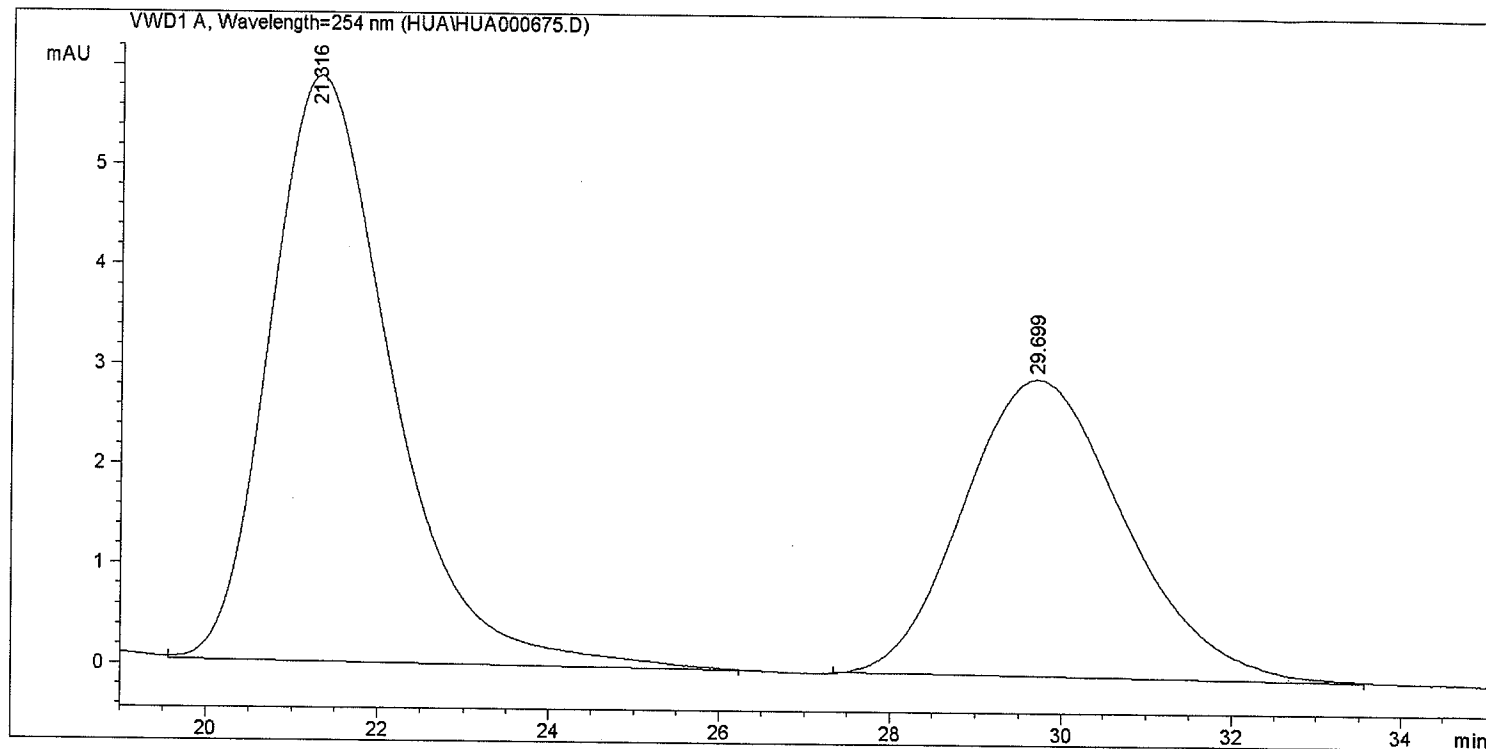
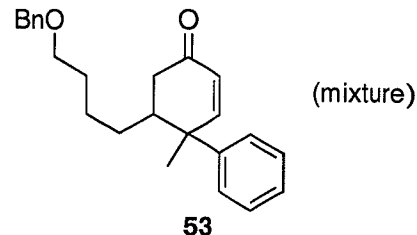
```
Sorted By      :      Signal
Multiplier     :      1.0000
Dilution       :      1.0000
Use Multiplier & Dilution Factor with ISTDs
```

Signal 1: VWD1 A, Wavelength=254 nm

Peak #	RetTime [min]	Type	Width [min]	Area mAU*s	Height [mAU]	Area %
1	13.508	BB	0.6230	5.34407	1.25995e-1	7.4450
2	17.574	BV	0.8906	66.43693	1.08276	92.5550

=====

Acq. Operator	: HUA	Seq. Line	: 1
Acq. Instrument	: Instrument 1	Location	: Vial 1
Injection Date	: 2/8/2010 9:46:38 PM	Inj	: 1
		Inj Volume	: 5 µl
Acq. Method	: C:\CHEM32\1\METHODS\HUA.M		
Last changed	: 2/8/2010 9:44:30 PM by HUA		
Analysis Method	: C:\CHEM32\1\METHODS\HUA.M		
Last changed	: 3/15/2010 7:53:26 PM by CHAO		
	(modified after loading)		
Method Info	: ADanalytical column, 1.0 mL/min, 254 nm, IPA:HEX:		



=====  
Fraction Information  
=====

Fraction collection off

No Fractions found.

=====  
Area Percent Report  
=====

Sorted By : Signal  
Multiplier : 1.0000  
Dilution : 1.0000  
Use Multiplier & Dilution Factor with ISTDs

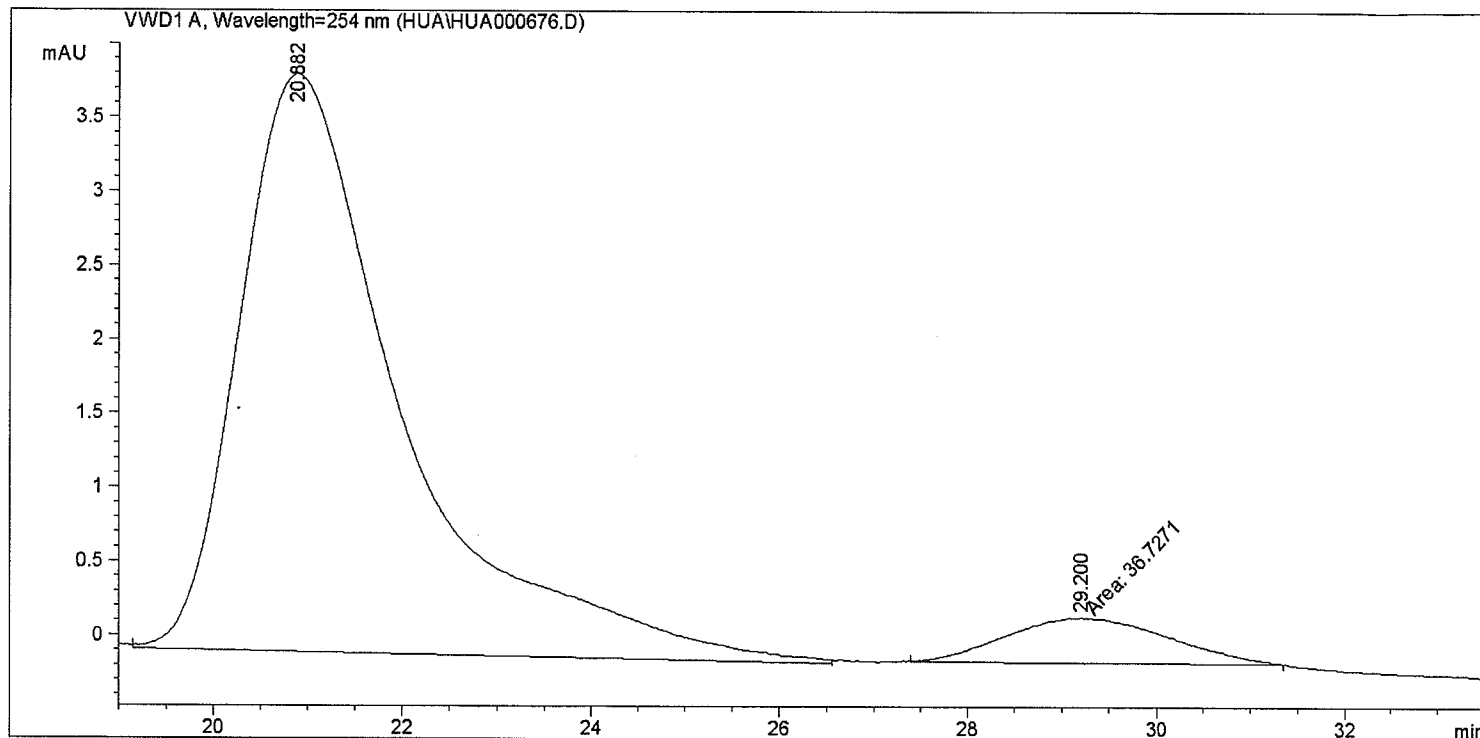
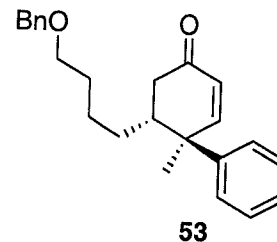
Signal 1: VWD1 A, Wavelength=254 nm

Peak #	RetTime [min]	Type	Width [min]	Area mAU *s	Height [mAU]	Area %
1	21.316	VB	1.5305	580.10803	5.87534	59.7053
2	29.699	BB	2.0112	391.51157	2.97824	40.2947

Sample Name: 15-48

```
=====
Acq. Operator   : HUA                               Seq. Line :    1
Acq. Instrument : Instrument 1                       Location  : Vial 1
Injection Date  : 2/9/2010 10:04:45 AM              Inj       :    1
                                                    Inj Volume: 5 µl

Acq. Method     : C:\CHEM32\1\METHODS\HUA.M
Last changed    : 2/9/2010 10:02:47 AM by HUA
Analysis Method : C:\CHEM32\1\METHODS\HUA.M
Last changed    : 3/15/2010 7:56:20 PM by CHAO
                  (modified after loading)
Method Info     : ADanalytical column, 1.0 mL/min, 254 nm, IPA:HEX10:90
=====
```



=====

Fraction Information

=====

Fraction collection off

No Fractions found.

=====

Area Percent Report

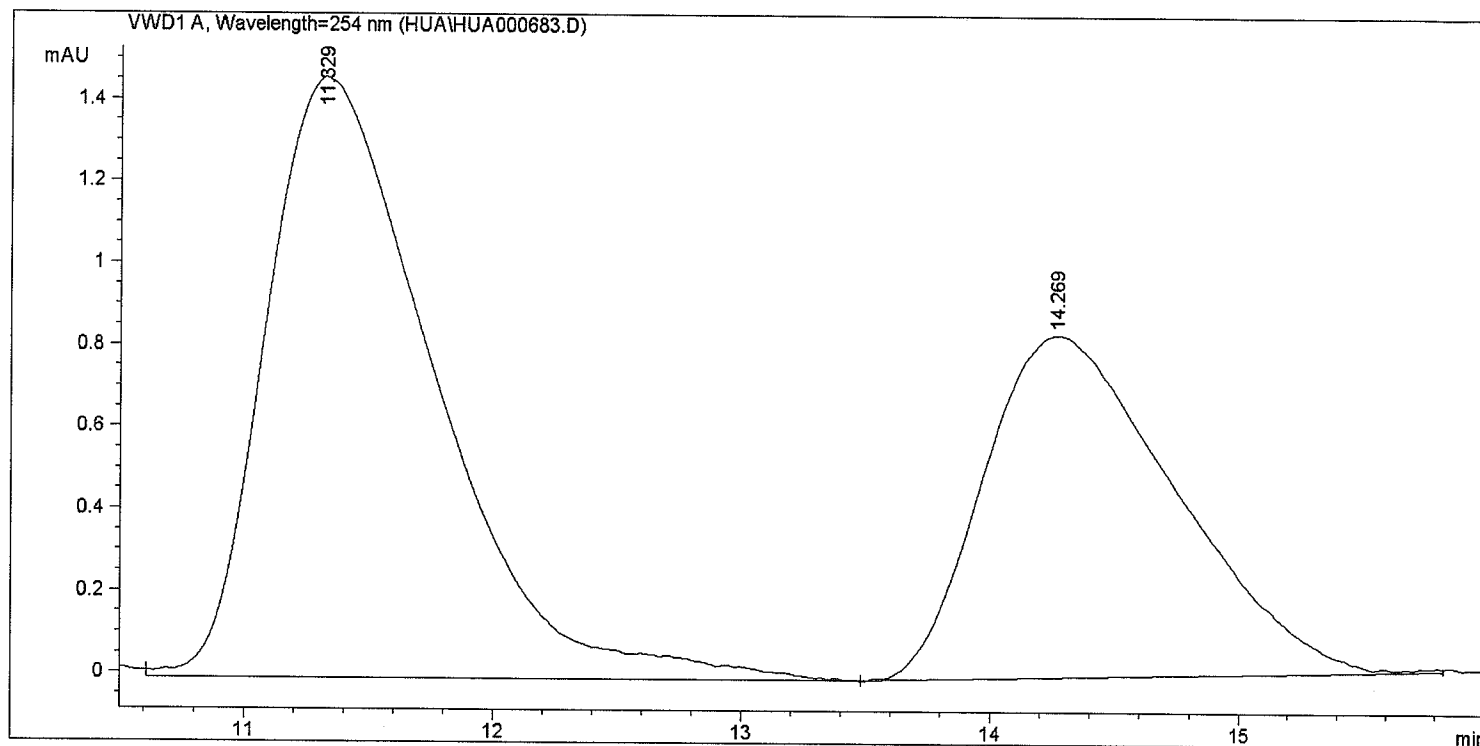
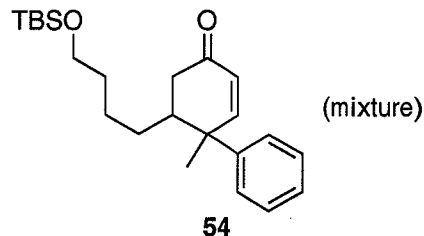
=====

Sorted By : Signal  
Multiplier : 1.0000  
Dilution : 1.0000  
Use Multiplier & Dilution Factor with ISTDs

Signal 1: VWD1 A, Wavelength=254 nm

Peak #	RetTime [min]	Type	Width [min]	Area mAU *s	Height [mAU]	Area %
1	20.882	VB	1.7658	464.76355	3.90874	92.6764
2	29.200	MM	1.9998	36.72712	3.06085e-1	7.3236

```
Seq. Line : 1
Location : Via:
Inj : 1
Inj Volume : 5 µl
```



Peak #	RetTime [min]	Type	Width [min]	Area mAU	Area *s	Height [mAU]	Area %
1	11.329	VB	0.7117	68.98110		1.46703	60.6542
2	14.269	BB	0.8117	44.74733		8.34853e-1	39.3458

Sample Name: 15-39

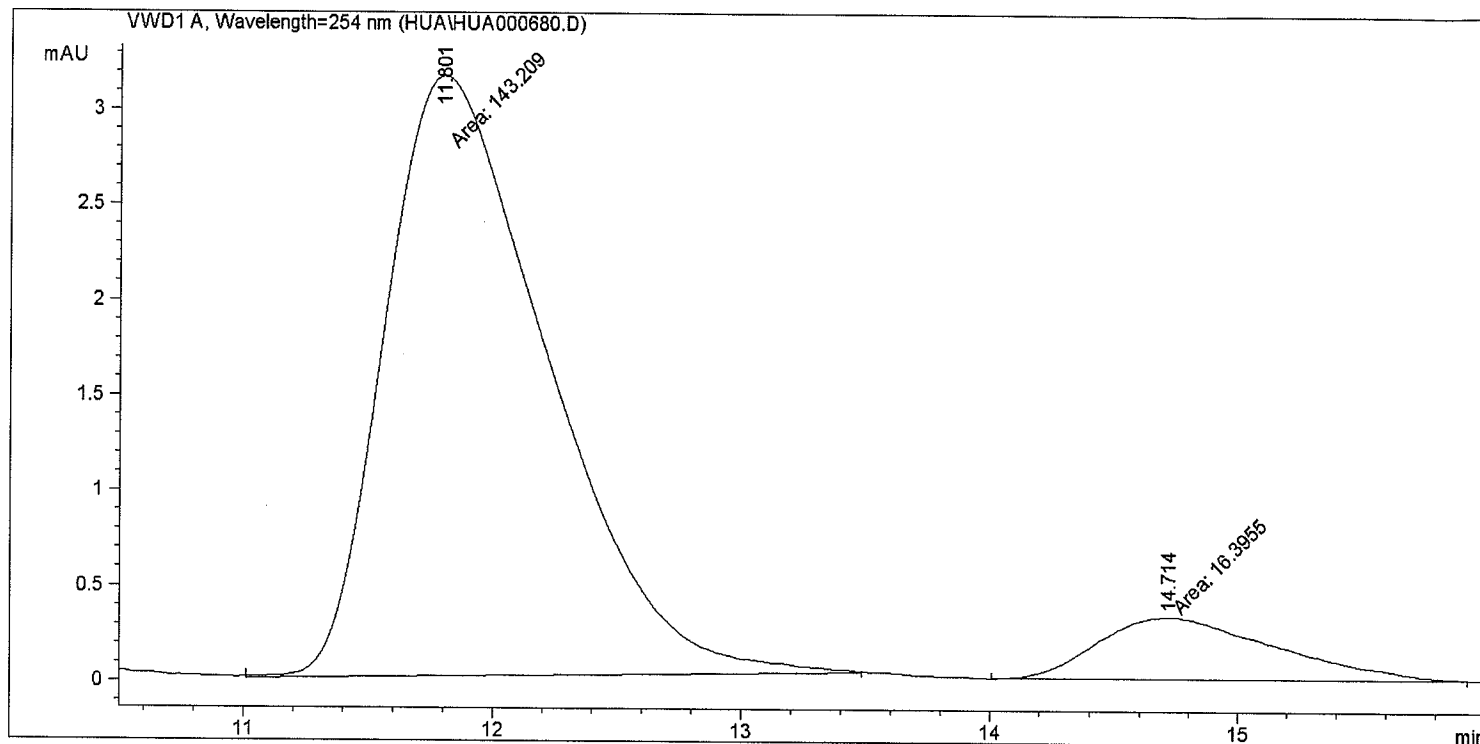
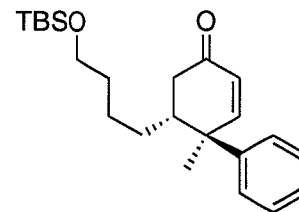
```

=====
Acq. Operator   : HUA                      Seq. Line :    1
Acq. Instrument : Instrument 1              Location  : Vial 1
Injection Date  : 2/9/2010 3:46:24 PM      Inj       :    1
                                           Inj Volume: 5 µl

Acq. Method     : C:\CHEM32\1\METHODS\HUA.M
Last changed    : 2/9/2010 2:40:10 PM by HUA
Analysis Method : C:\CHEM32\1\METHODS\HUA.M
Last changed    : 3/15/2010 8:00:49 PM by CHAO
                  (modified after loading)

Method Info     : ADanalytical column, 1.0 mL/min, 254 nm, IPA:HEX10:90
=====

```



```

=====
Fraction Information
=====

```

Fraction collection off

No Fractions found.

```

=====
Area Percent Report
=====

```

```

Sorted By      : Signal
Multiplier     : 1.0000
Dilution       : 1.0000
Use Multiplier & Dilution Factor with ISTDs

```

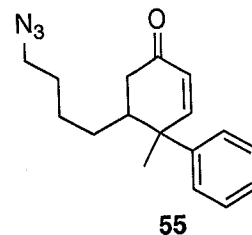
Signal 1: VWD1 A, Wavelength=254 nm

Peak #	RetTime [min]	Type	Width [min]	Area mAU *s	Height [mAU]	Area %
1	11.801	MM	0.7571	143.20897	3.15259	89.7274
2	14.714	MM	0.8387	16.39554	3.25827e-1	10.2726

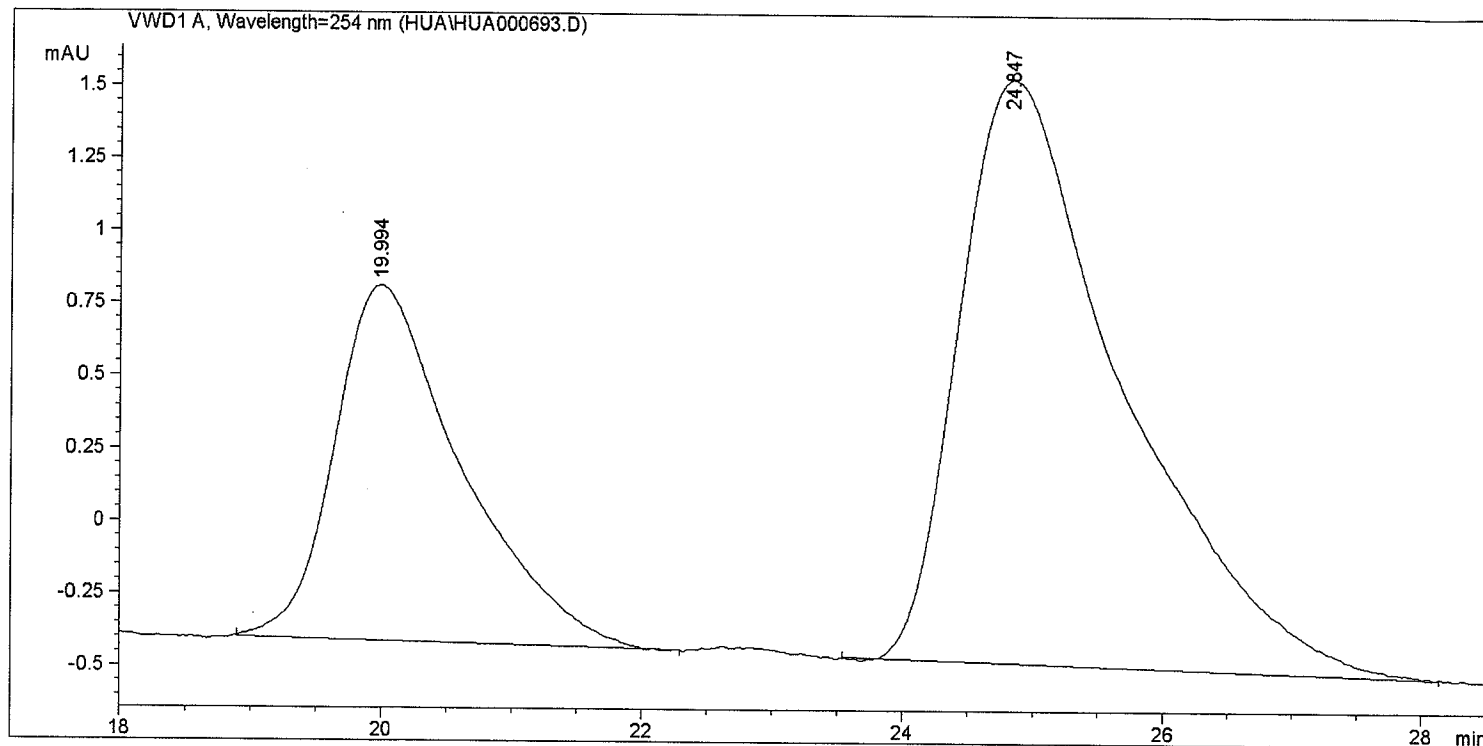


```
=====
Acq. Operator   : HUA                               Seq. Line :    1
Acq. Instrument : Instrument 1                       Location  : Vial 1
Injection Date  : 2/14/2010 3:46:34 PM              Inj       :    1
                                                    Inj Volume: 5 µl

Acq. Method     : C:\CHEM32\1\METHODS\HUA.M
Last changed    : 2/14/2010 3:44:40 PM by HUA
Analysis Method : C:\CHEM32\1\METHODS\HUA.M
Last changed    : 3/15/2010 8:03:44 PM by CHAO
                  (modified after loading)
Method Info     : ADanalytical column, 1.0 mL/min, 254 nm, IPA:HEX10:90
=====
```



(mixture)



=====  
Fraction Information  
=====

Fraction collection off

No Fractions found.

=====  
Area Percent Report  
=====

Sorted By : Signal  
Multiplier : 1.0000  
Dilution : 1.0000  
Use Multiplier & Dilution Factor with ISTDs

Signal 1: VWD1 A, Wavelength=254 nm

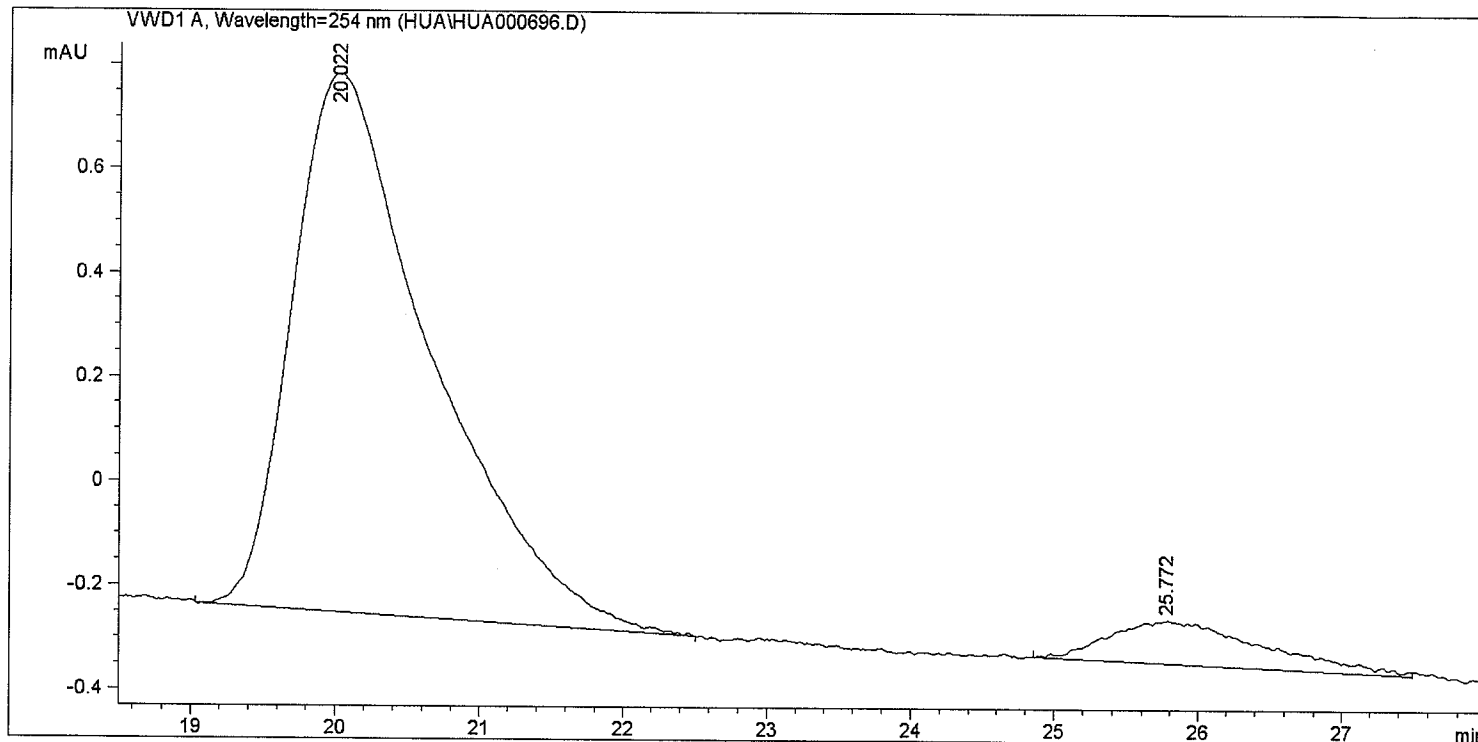
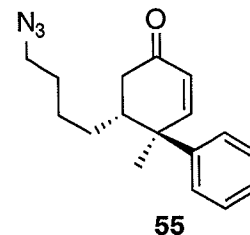
Peak #	RetTime [min]	Type	Width [min]	Area mAU*s	Height [mAU]	Area %
1	19.994	BB	0.9653	82.66781	1.22892	31.9125
2	24.847	BB	1.2762	176.37718	2.01744	68.0875

Sample Name: 15-55

```
=====
Acq. Operator   : HUA                               Seq. Line :    1
Acq. Instrument : Instrument 1                       Location  : Vial 1
Injection Date  : 2/14/2010 4:23:38 PM              Inj       :    1
                                                    Inj Volume: 5 µl

Acq. Method     : C:\CHEM32\1\METHODS\HUA.M
Last changed    : 2/14/2010 3:44:40 PM by HUA
Analysis Method : C:\CHEM32\1\METHODS\HUA.M
Last changed    : 3/15/2010 8:03:57 PM by CHAO
                  (modified after loading)

Method Info     : ADanalytical column, 1.0 mL/min, 254 nm, IPA:HEX10:90
=====
```



=====  
Fraction Information  
=====

Fraction collection off

No Fractions found.  
=====

=====  
Area Percent Report  
=====

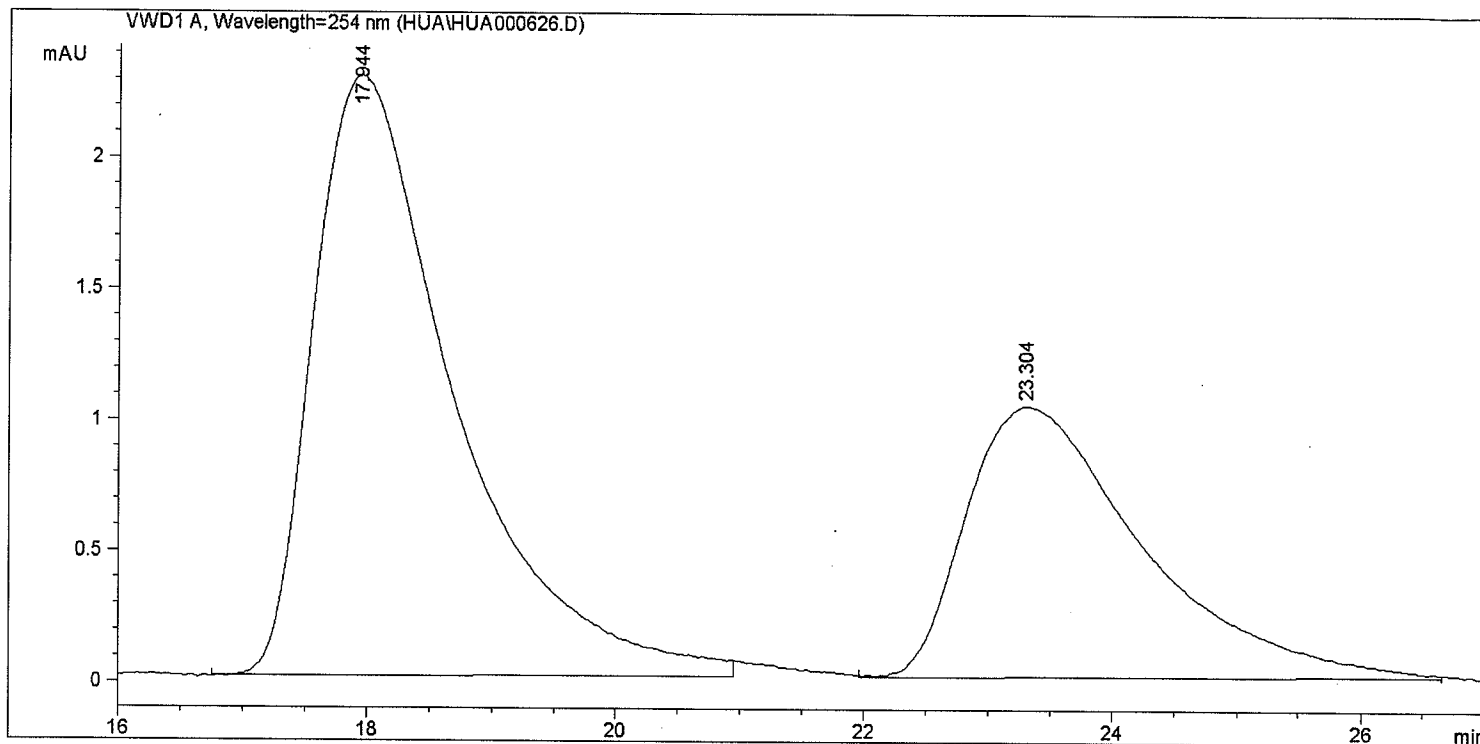
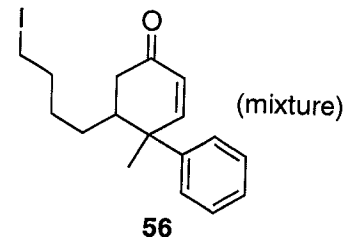
```
Sorted By      :      Signal
Multiplier     :      1.0000
Dilution       :      1.0000
Use Multiplier & Dilution Factor with ISTDs
```

Signal 1: VWD1 A, Wavelength=254 nm

Peak #	RetTime [min]	Type	Width [min]	Area mAU*s	Height [mAU]	Area %
1	20.022	BB	0.9779	69.17640	1.03490	91.4435
2	25.772	BB	0.9416	6.47297	8.32908e-2	8.5565

=====

Acq. Operator	: HUA	Seq. Line	: 1
Acq. Instrument	: Instrument 1	Location	: Vial 1
Injection Date	: 1/26/2010 3:30:41 PM	Inj	: 1
		Inj Volume	: 5 µl
Acq. Method	: C:\CHEM32\1\METHODS\HUA.M		
Last changed	: 1/26/2010 10:15:56 AM by HUA		
Analysis Method	: C:\CHEM32\1\METHODS\HUA.M		
Last changed	: 3/15/2010 8:05:19 PM by CHAO		
	(modified after loading)		
Method Info	: ADanalytical column, 1.0 mL/min, 254 nm, IPA:HEX10:90		



=====

Fraction Information

=====

Fraction collection off

No Fractions found.

=====

Area Percent Report

=====

Sorted By : Signal  
Multiplier : 1.0000  
Dilution : 1.0000  
Use Multiplier & Dilution Factor with ISTDs

Signal 1: VWD1 A, Wavelength=254 nm

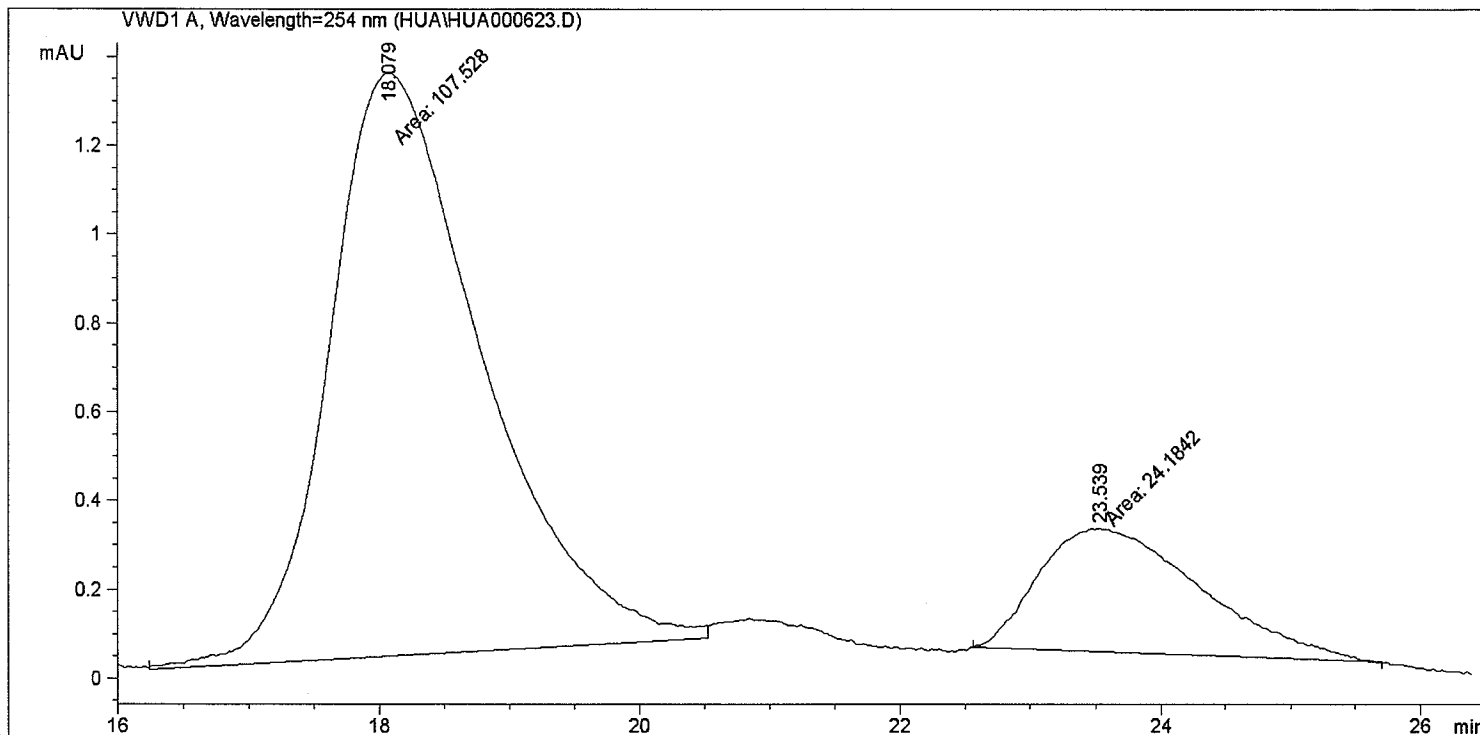
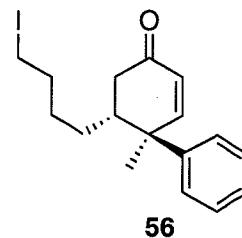
Peak #	RetTime [min]	Type	Width [min]	Area mAU *s	Height [mAU]	Area %
1	17.944	BB	1.1702	180.53336	2.29001	63.8415
2	23.304	BB	1.4738	102.25032	1.03419	36.1585

Sample Name: 15-28

```
=====
Acq. Operator   : HUA                      Seq. Line :    1
Acq. Instrument : Instrument 1              Location  : Vial 1
Injection Date  : 1/26/2010 2:26:55 PM      Inj       :    1
                                           Inj Volume: 5 µl

Acq. Method     : C:\CHEM32\1\METHODS\HUA.M
Last changed    : 1/26/2010 10:15:56 AM by HUA
Analysis Method : C:\CHEM32\1\METHODS\HUA.M
Last changed    : 3/15/2010 8:08:15 PM by CHAO
                  (modified after loading)

Method Info     : ADanalytical column, 1.0 mL/min, 254 nm, IPA:HEX10:90
=====
```



```
=====
Fraction Information
=====
```

Fraction collection off

No Fractions found.

```
=====
Area Percent Report
=====
```

```
Sorted By      :      Signal
Multiplier     :      1.0000
Dilution       :      1.0000
Use Multiplier & Dilution Factor with ISTDs
```

Signal 1: VWD1 A, Wavelength=254 nm

Peak #	RetTime [min]	Type	Width [min]	Area mAU	Height [mAU]	Area %
1	18.079	MM	1.3631	107.52780	1.31470	81.6386
2	23.539	MM	1.4510	24.18416	2.77785e-1	18.3614

Sample Name: 15-74mix

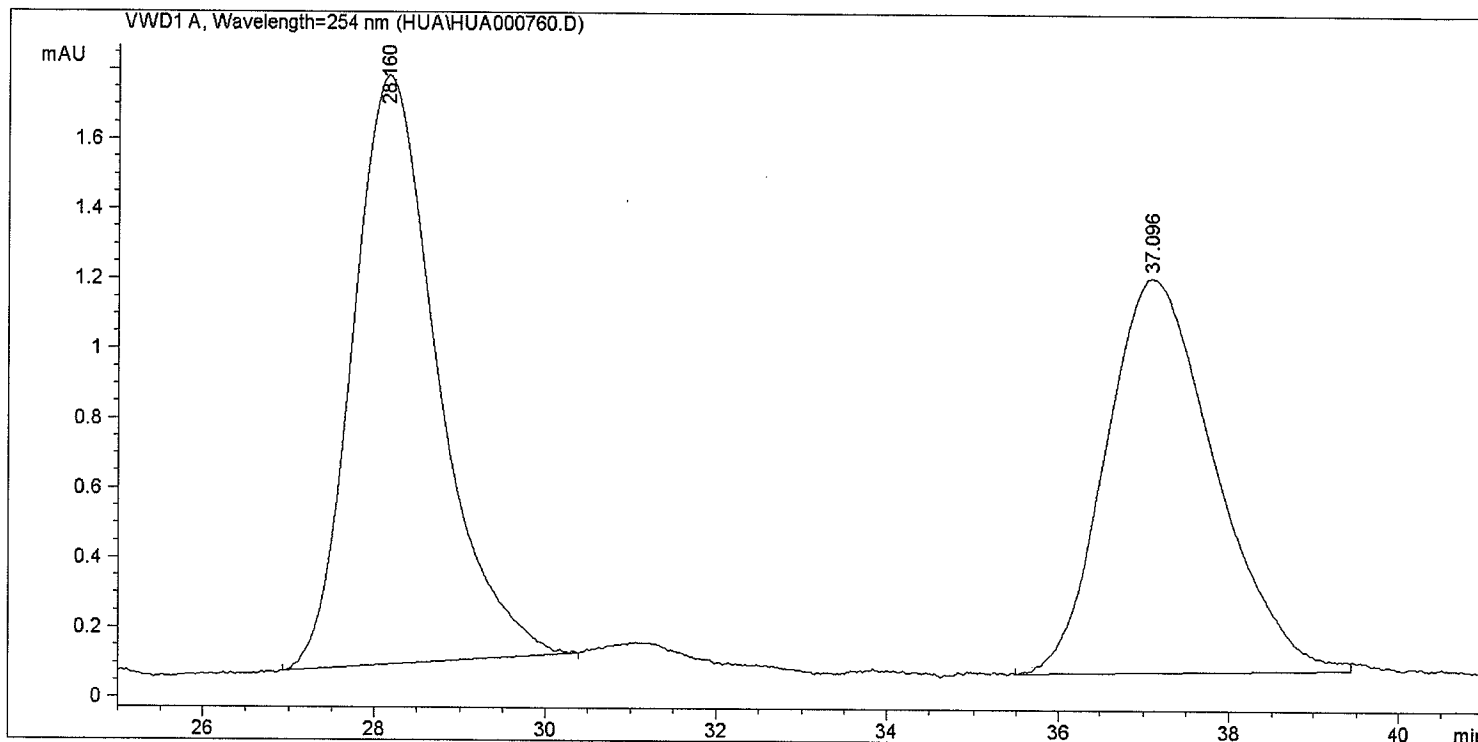
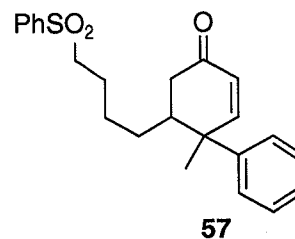
```

=====
Acq. Operator   : HUA                      Seq. Line :    1
Acq. Instrument : Instrument 1              Location  : Via
Injection Date  : 3/8/2010 3:19:33 PM      Inj       :    1
                                           Inj Volume: 5 µl

Acq. Method     : C:\CHEM32\1\METHODS\HUA.M
Last changed    : 3/8/2010 12:58:14 PM by HUA
Analysis Method : C:\CHEM32\1\METHODS\HUA.M
Last changed    : 3/15/2010 8:11:31 PM by CHAO
                  (modified after loading)

Method Info     : ADanalytical column, 1.0 mL/min, 254 nm, IPA:HEX10:90
=====

```



```

=====
Fraction Information
=====

```

Fraction collection off

No Fractions found.

```

=====
Area Percent Report
=====

```

```

Sorted By      :      Signal
Multiplier     :      1.0000
Dilution       :      1.0000
Use Multiplier & Dilution Factor with ISTDs

```

Signal 1: VWD1 A, Wavelength=254 nm

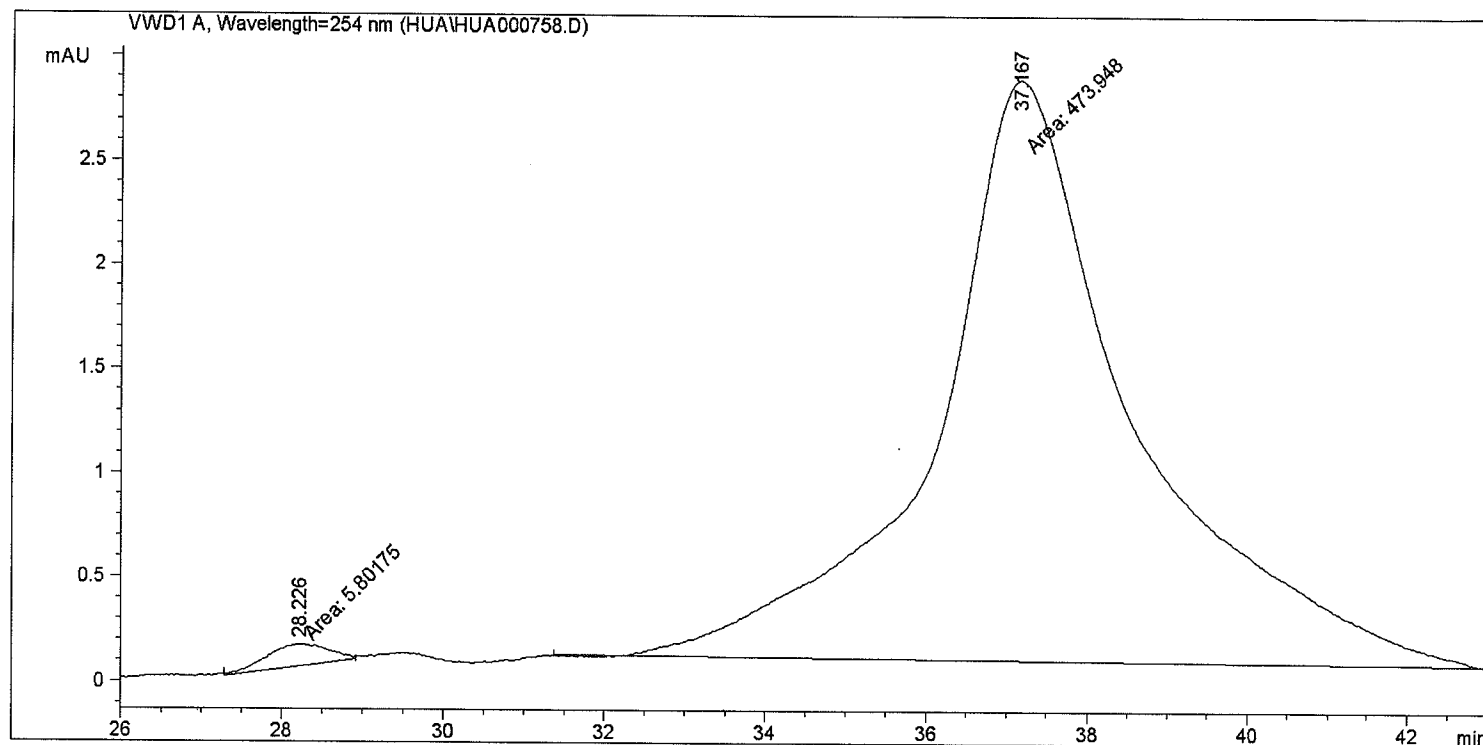
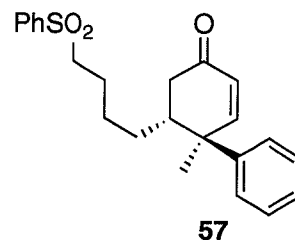
Peak #	RetTime [min]	Type	Width [min]	Area mAU*s	Height [mAU]	Area %
1	28.160	BB	1.0432	115.56551	1.68831	53.4490
2	37.096	BB	1.3400	100.65092	1.13221	46.5510

Sample Name: 15-74

```
=====
Acq. Operator   : HUA                               Seq. Line :    1
Acq. Instrument : Instrument 1                       Location  : Vial 1
Injection Date  : 3/8/2010 1:48:22 PM                 Inj       :    1
                                                    Inj Volume: 5 µl

Acq. Method     : C:\CHEM32\1\METHODS\HUA.M
Last changed    : 3/8/2010 12:58:14 PM by HUA
Analysis Method : C:\CHEM32\1\METHODS\HUA.M
Last changed    : 3/15/2010 8:12:56 PM by CHAO
                  (modified after loading)

Method Info     : ADanalytical column, 1.0 mL/min, 254 nm, IPA:HEX10:9.
=====
```



=====  
Fraction Information  
=====

Fraction collection off

No Fractions found.

=====  
Area Percent Report  
=====

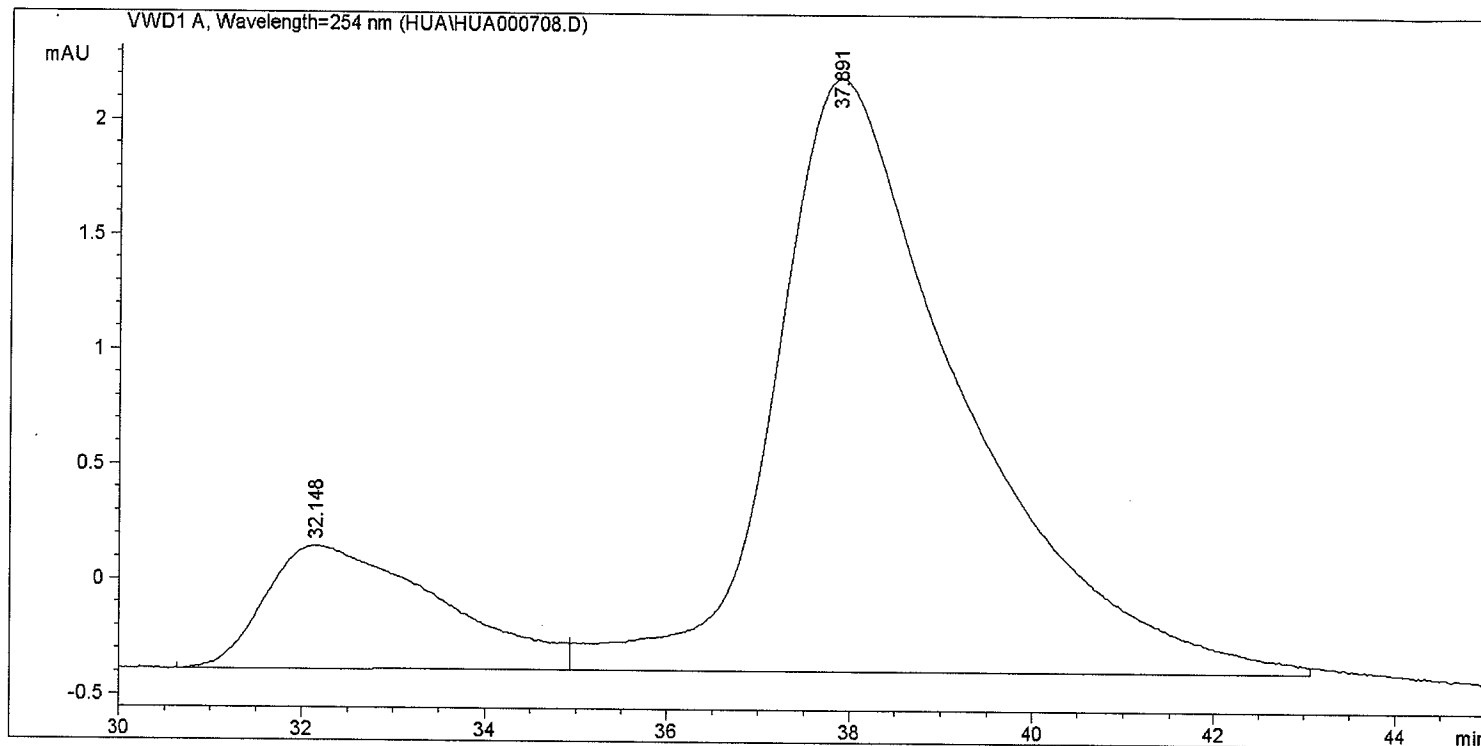
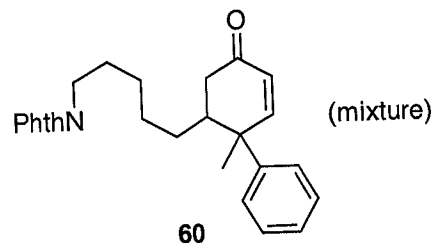
```
Sorted By      :      Signal
Multiplier     :      1.0000
Dilution       :      1.0000
Use Multiplier & Dilution Factor with ISTDs
```

Signal 1: VWD1 A, Wavelength=254 nm

Peak #	RetTime [min]	Type	Width [min]	Area mAU *s	Height [mAU]	Area %
1	28.226	MM	0.9045	5.80175	1.06906e-1	1.2093
2	37.167	MM	2.8347	473.94778	2.78656	98.7907

=====

Acq. Operator	: HUA	Seq. Line	:
Acq. Instrument	: Instrument 1	Location	: Vi
Injection Date	: 2/24/2010 12:43:27 PM	Inj	:
		Inj Volume	: 5
Acq. Method	: C:\CHEM32\1\METHODS\HUA.M		
Last changed	: 2/24/2010 12:41:26 PM by HUA		
Analysis Method	: C:\CHEM32\1\METHODS\HUA.M		
Last changed	: 3/15/2010 8:15:26 PM by CHAO		
	(modified after loading)		
Method Info	: ADanalytical column, 1.0 mL/min, 254 nm, IPA:1		



=====

Fraction Information

=====

Fraction collection off

No Fractions found.

=====

Area Percent Report

=====

Sorted By : Signal  
Multiplier : 1.0000  
Dilution : 1.0000  
Use Multiplier & Dilution Factor with ISTDs

Signal 1: VWD1 A, Wavelength=254 nm

Peak #	RetTime [min]	Type	Width [min]	Area mAU *s	Height [mAU]	Area %
1	32.148	BV	1.7805	71.41869	5.36379e-1	16.1952
2	37.891	VB	2.0134	369.56851	2.58213	83.8048

Sample Name: 15-62

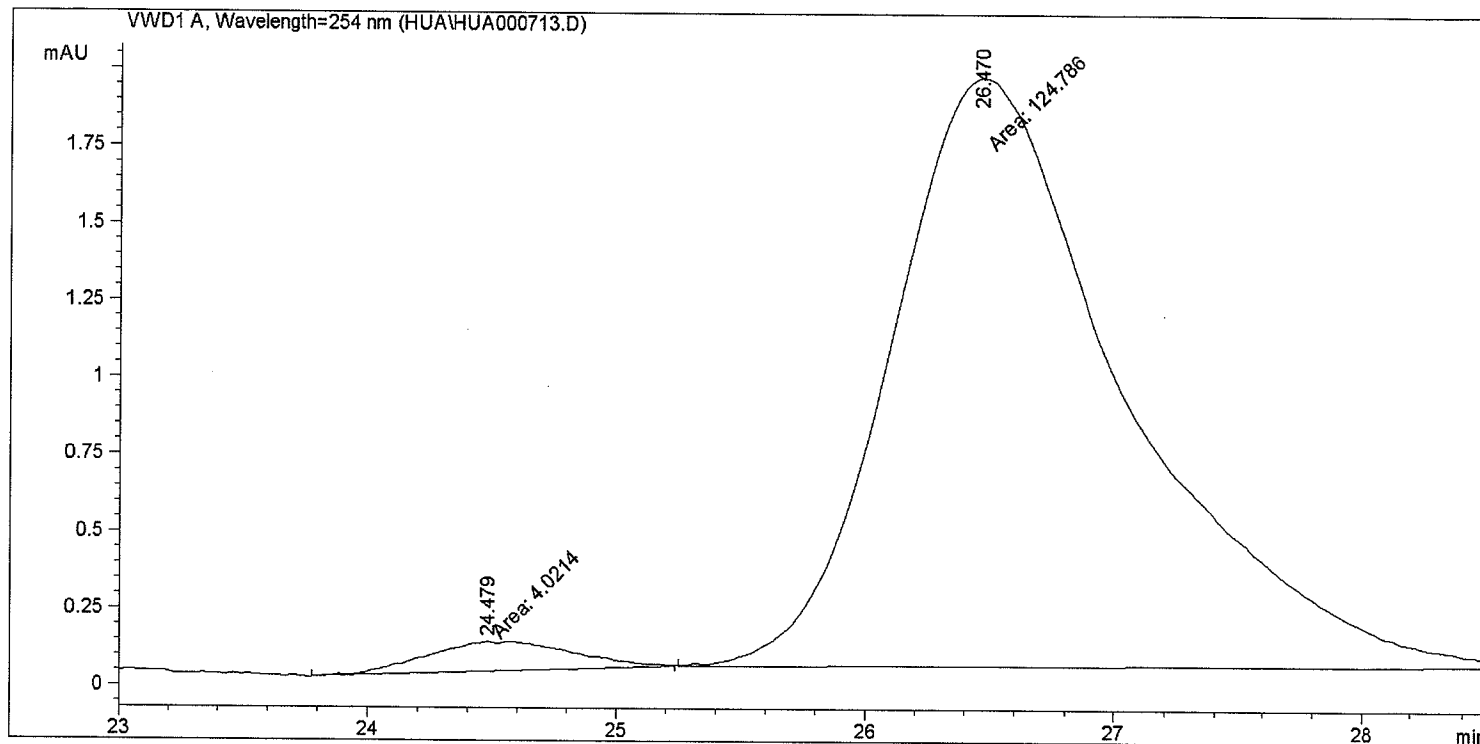
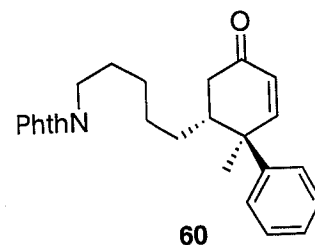
```

=====
Acq. Operator   : HUA                      Seq. Line :    1
Acq. Instrument : Instrument 1              Location  : Vial 1
Injection Date  : 2/24/2010 2:59:32 PM      Inj       :    1
                                           Inj Volume: 5 µl

Acq. Method     : C:\CHEM32\1\METHODS\HUA.M
Last changed    : 2/24/2010 1:53:42 PM by HUA
Analysis Method : C:\CHEM32\1\METHODS\HUA.M
Last changed    : 3/15/2010 8:20:41 PM by CHAO
                  (modified after loading)

Method Info     : ADanalytical column, 1.0 mL/min, 254 nm, IPA:HEX10:90
=====

```



```

=====
Fraction Information
=====

```

Fraction collection off

No Fractions found.

```

=====
Area Percent Report
=====

```

```

Sorted By      : Signal
Multiplier     : 1.0000
Dilution       : 1.0000
Use Multiplier & Dilution Factor with ISTDs

```

Signal 1: VWD1 A, Wavelength=254 nm

Peak #	RetTime [min]	Type	Width [min]	Area mAU *s	Height [mAU]	Area %
1	24.479	MM	0.6863	4.02140	9.76536e-2	3.1220
2	26.470	MM	1.0887	124.78558	1.91027	96.8780



Sample Name: 15-22 mix

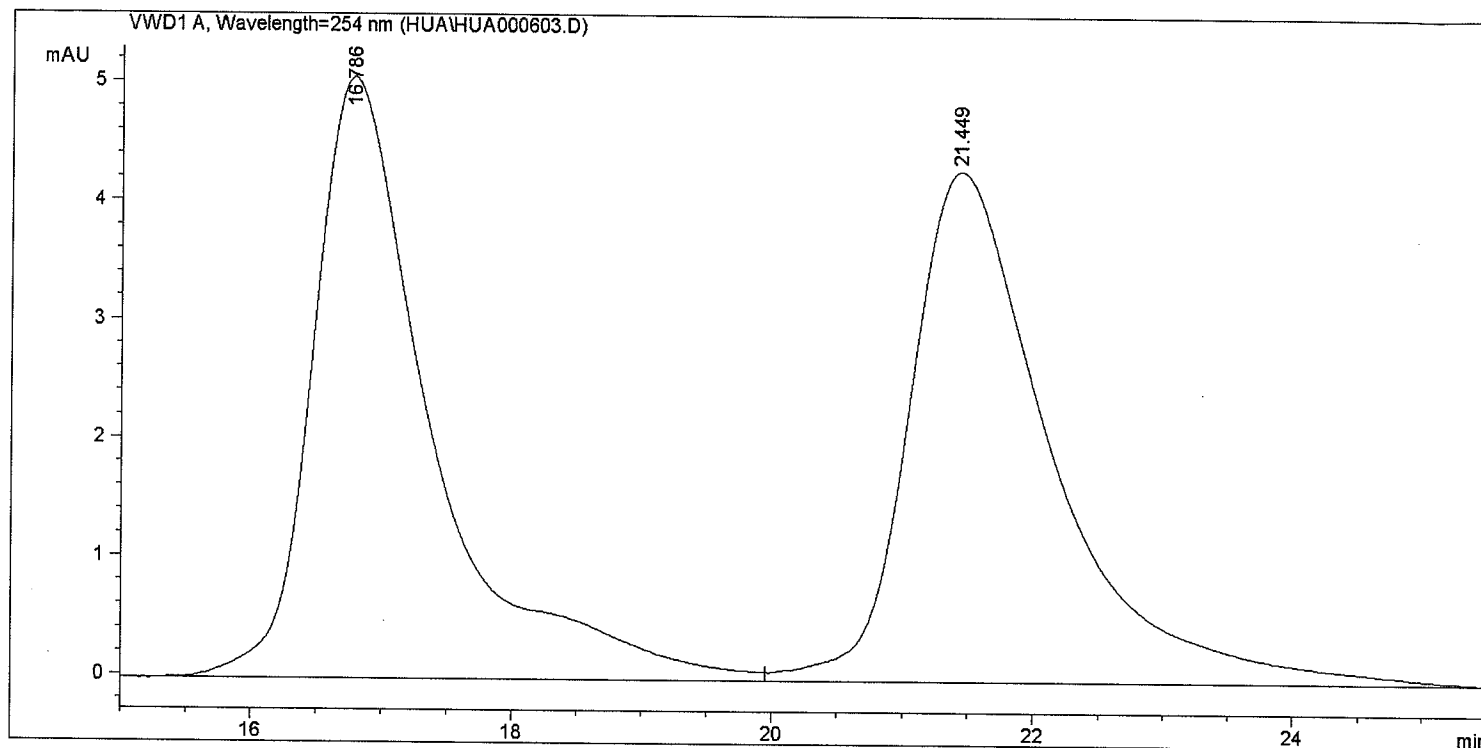
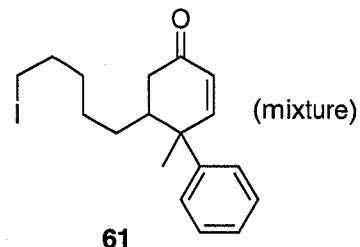
```

=====
Acq. Operator   : HUA                      Seq. Line :    1
Acq. Instrument : Instrument 1              Location  : Vial 1
Injection Date  : 1/14/2010 10:40:29 AM    Inj       :    1
                                           Inj Volume: 5 µl

Acq. Method     : C:\CHEM32\1\METHODS\HUA.M
Last changed    : 1/14/2010 10:38:37 AM by HUA
Analysis Method : C:\CHEM32\1\METHODS\HUA.M
Last changed    : 3/15/2010 8:20:56 PM by CHAO
                  (modified after loading)

Method Info     : ADanalytical column, 1.0 mL/min, 254 nm, IPA:HEX10:90
=====

```



```

=====
Fraction Information
=====

```

```

Fraction collection off
=====

```

```

No Fractions found.
=====

```

```

=====
Area Percent Report
=====

```

```

Sorted By      : Signal
Multiplier     : 1.0000
Dilution       : 1.0000
Use Multiplier & Dilution Factor with ISTDs

```

Signal 1: VWD1 A, Wavelength=254 nm

Peak #	RetTime [min]	Type	Width [min]	Area mAU *s	Height [mAU]	Area %
1	16.786	VV	0.9288	322.69986	5.07094	49.5812
2	21.449	VB	1.1220	328.15085	4.30616	50.4188

Sample Name: 15-22

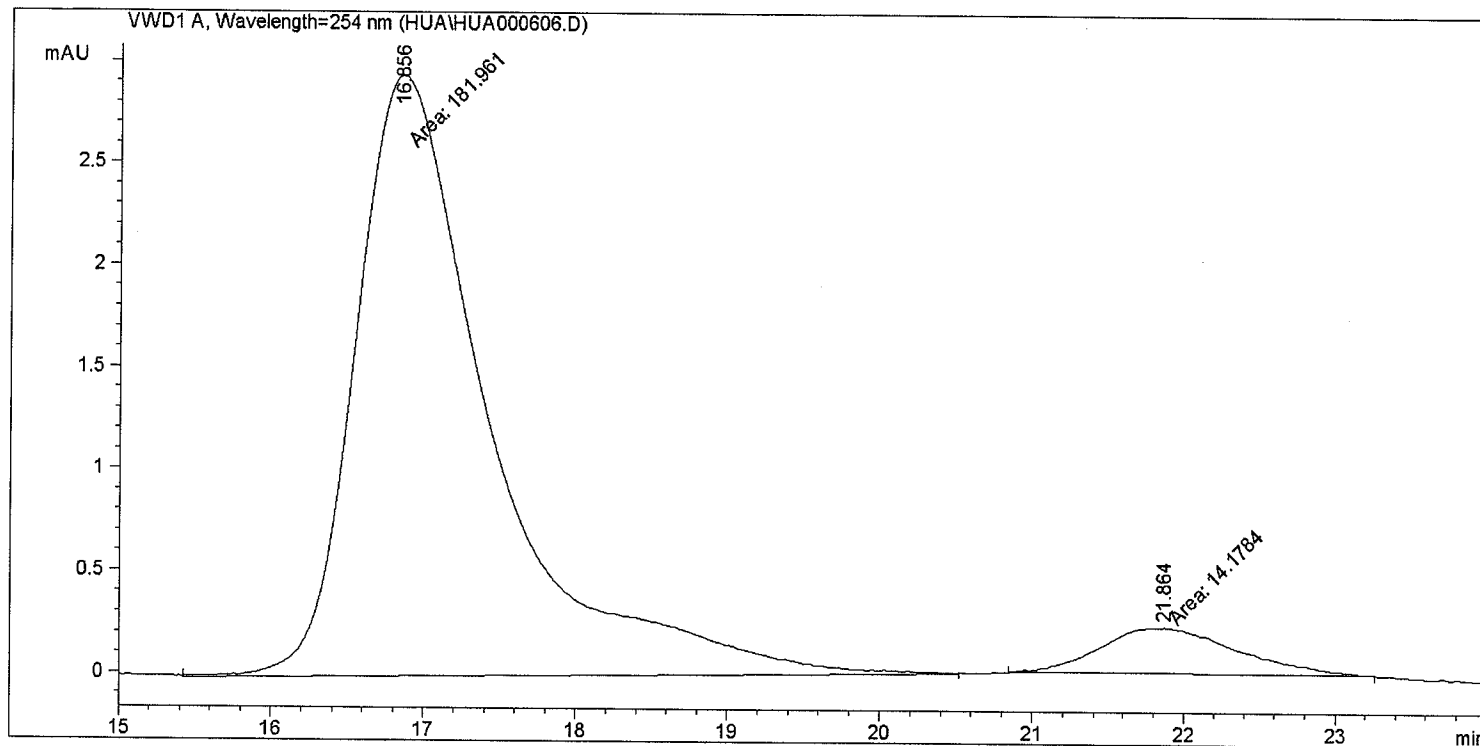
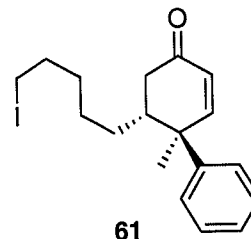
```

=====
Acq. Operator   : HUA                      Seq. Line :    1
Acq. Instrument : Instrument 1              Location  : Vial 1
Injection Date  : 1/14/2010 11:12:28 AM    Inj       :    1
                                           Inj Volume: 5 µl

Acq. Method     : C:\CHEM32\1\METHODS\HUA.M
Last changed    : 1/14/2010 10:38:37 AM by HUA
Analysis Method : C:\CHEM32\1\METHODS\HUA.M
Last changed    : 3/15/2010 8:24:36 PM by CHAO
                  (modified after loading)

Method Info     : ADanalytical column, 1.0 mL/min, 254 nm, IPA:HEX10:90
=====

```



```

=====
Fraction Information
=====

```

```

=====
Fraction collection off
=====

```

```

=====
No Fractions found.
=====

```

```

=====
Area Percent Report
=====

```

```

Sorted By      : Signal
Multiplier     : 1.0000
Dilution       : 1.0000
Use Multiplier & Dilution Factor with ISTDs

```

Signal 1: VWD1 A, Wavelength=254 nm

Peak #	RetTime [min]	Type	Width [min]	Area mAU *s	Height [mAU]	Area %
1	16.856	MM	1.0277	181.96082	2.95105	92.7713
2	21.864	MM	1.0560	14.17836	2.23772e-1	7.2287