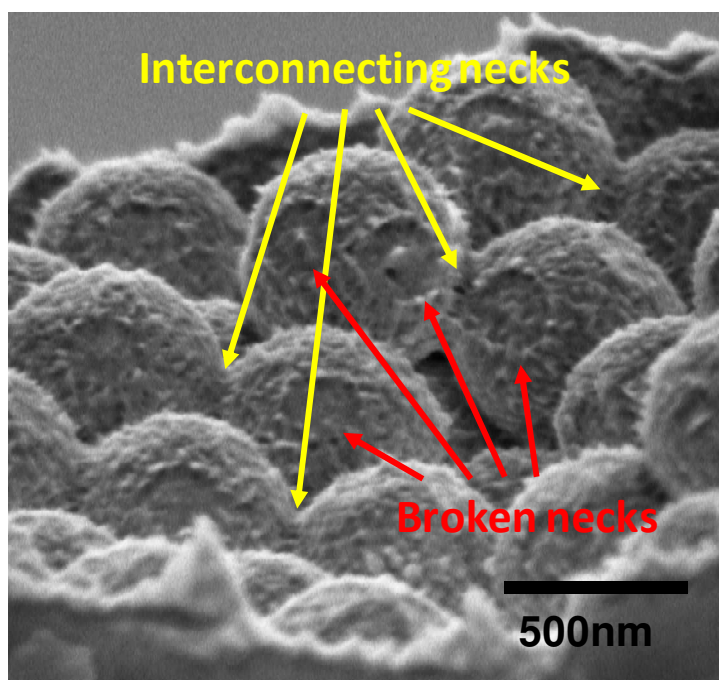


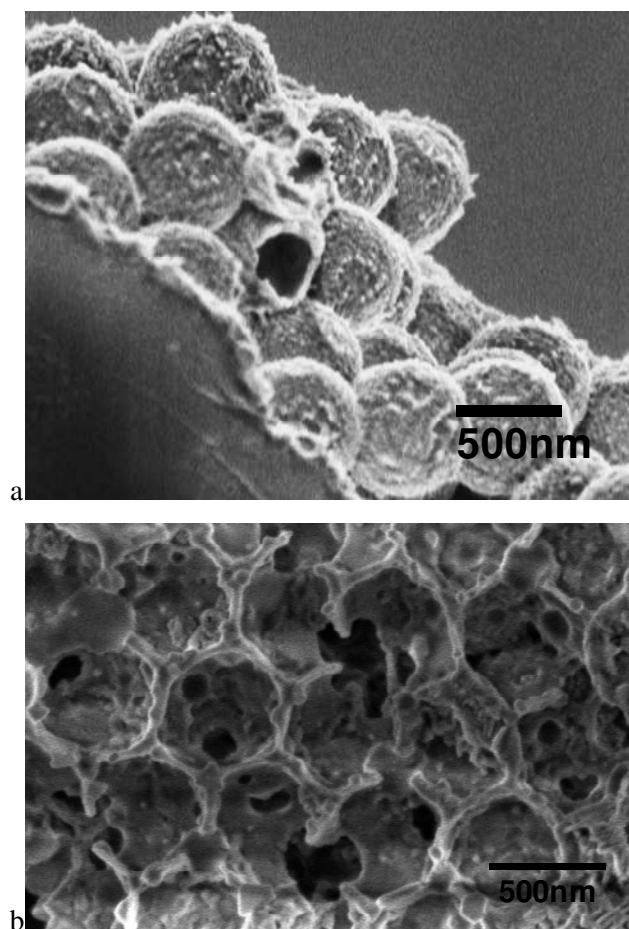
# Supporting Information

## 3D Hierarchically Ordered Composite Block Copolymer Hollow Sphere Arrays by Solution Wetting

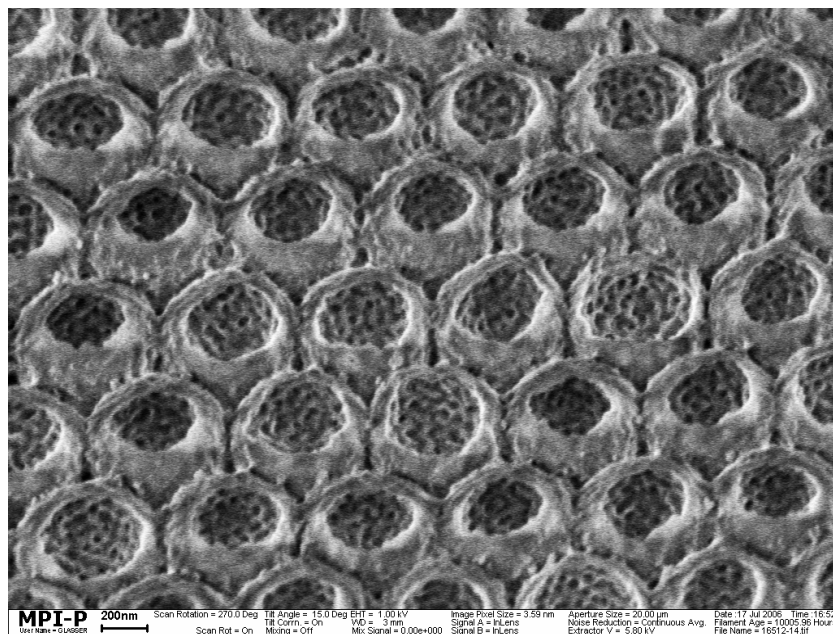
*Jun Fu, Jianjun Wang, Qin Li, Dong Ha Kim, and Wolfgang Knoll*



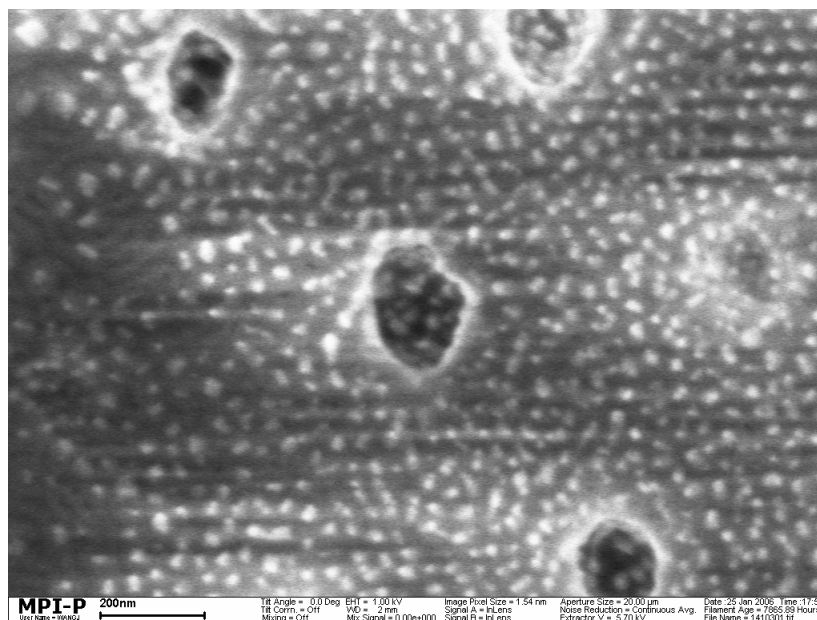
**Figure S1.** SEM image of hollow PS-PMMA spheres with interconnected necks (yellow arrowed) and the necks broken (red arrowed) during HF etching and subsequent rinsing with water.



**Figure S2.** SEM images of (a) 3D arrays of PS-PMMA hollow spheres and (b) PS-b-PMMA hollow spheres interconnected through nanocavities on the shells.



**Figure S3.** A representative SEM image of PS-PMMA hollow spheres before annealing.



**Figure S4.** A representative SEM image showing the Pd nanoparticles ordered along the PS domains of the PS-*b*-PMMA pattern after annealing at 200 °C for 24 hrs in vacuum.