

Supporting Information

Co-Self-Assembly of Binary Colloidal Crystals at the Air-Water Interface

Jie Yu, Qingfeng Yan*, Dezhong Shen

*Department of Chemistry, State Key Laboratory of New Ceramics and Fine
Processing, Tsinghua University, Beijing 100084, P. R. China*

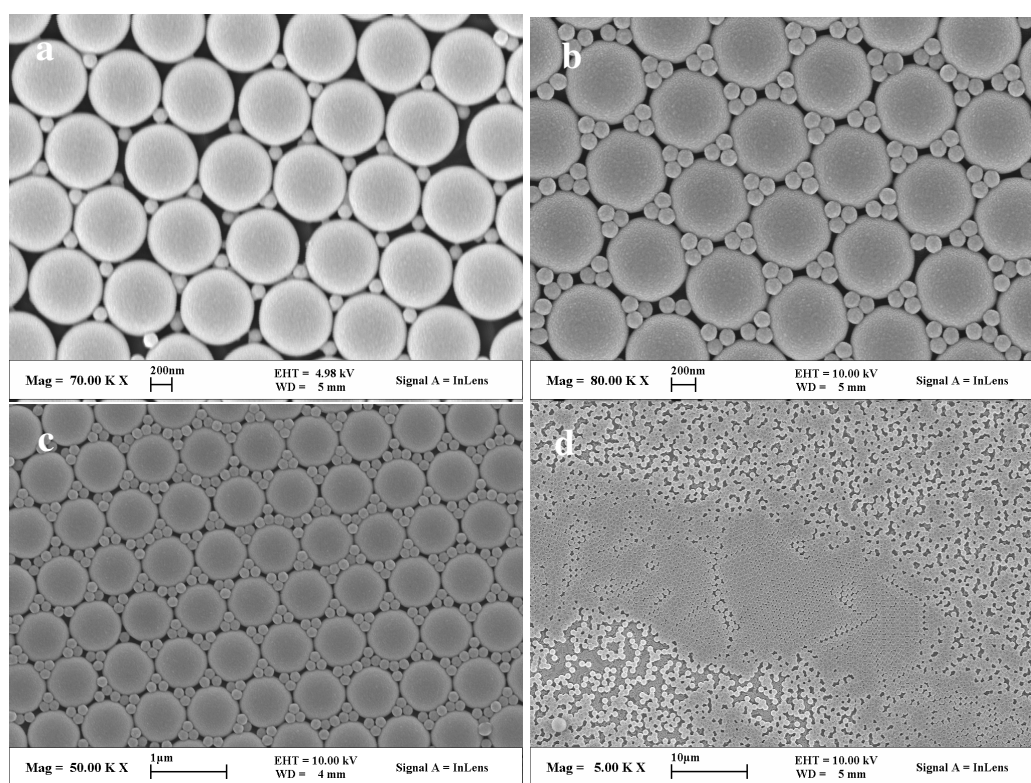


Figure S1. SEM images of BCC of large ($R_L = 669$ nm) and small ($R_S = 130$ nm) spheres with (a) $\gamma_{S/L} = 0.194$, $N_{S/L} = 2$; (b) $\gamma_{S/L} = 0.194$, $N_{S/L} = 4$; (c) $\gamma_{S/L} = 0.194$, $N_{S/L} = 8$; (d) $\gamma_{S/L} = 0.194$, $N_{S/L} = 12$.