

Supporting Information

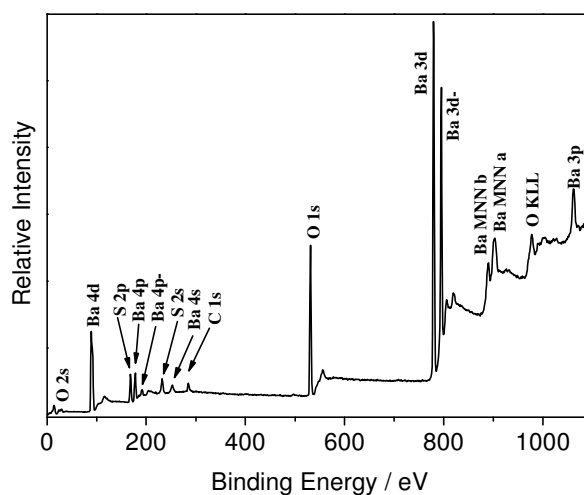


Figure SI-1. X-ray photoelectron spectrum of the sample synthesized at the irradiation time of 1000 min. The dose rate is 20 Gy/min, and the concentration of EDTA is 8 mmol/L.

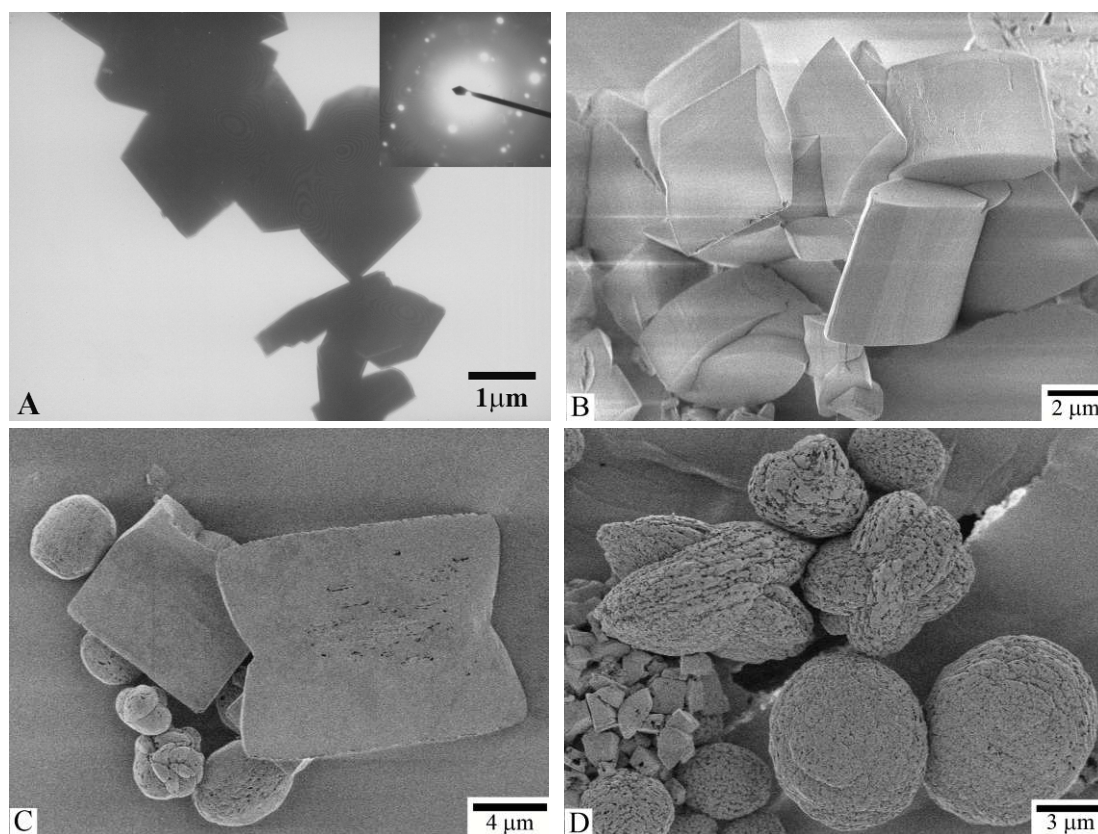


Figure SI-2. TEM (A) and SEM (B–D) images of the samples synthesized in EDTA solution with different concentrations (from A to D, [EDTA] = 0, 0, 0.08, 0.8 mmol/L). The irradiation time and the dose rate are fixed at 1000 min and 20 Gy/min, respectively.

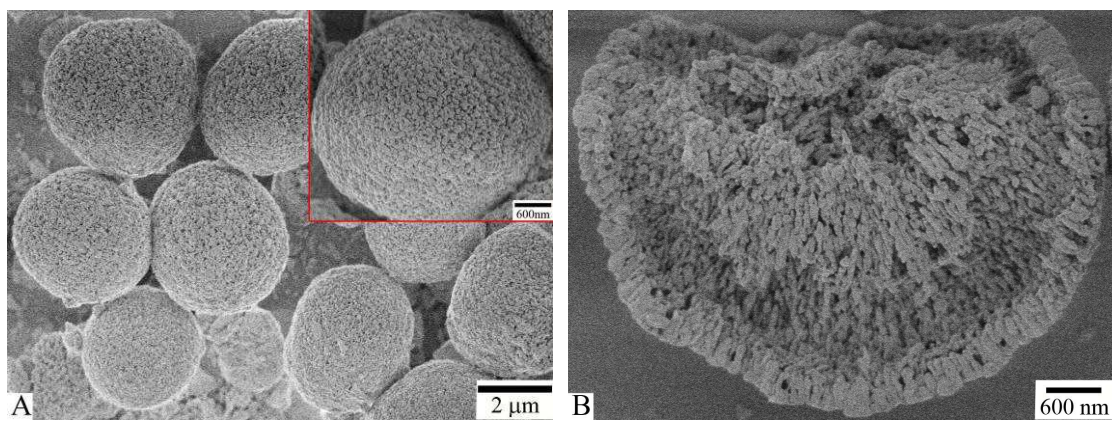


Figure SI-3. SEM images of the samples (irradiation time: 250 min) ripened in the irradiated mother solution for 24 h.