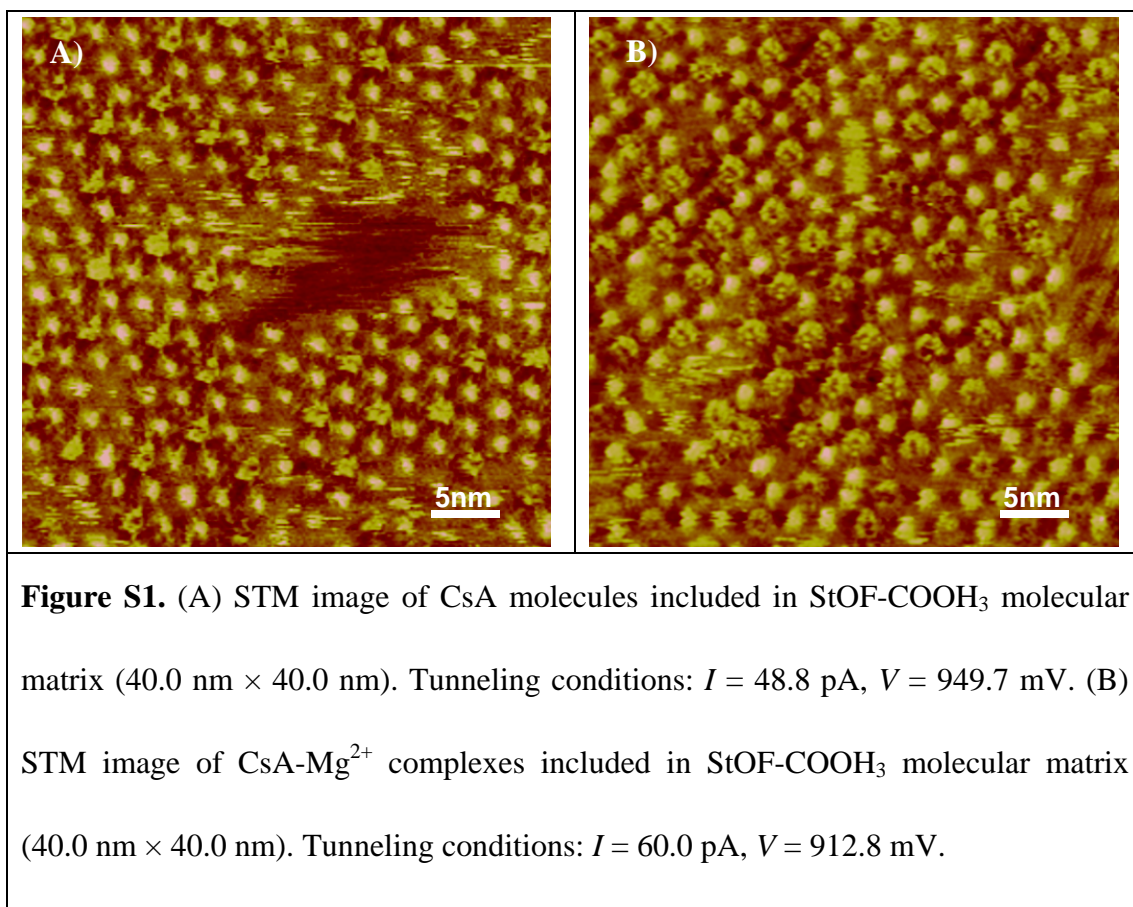


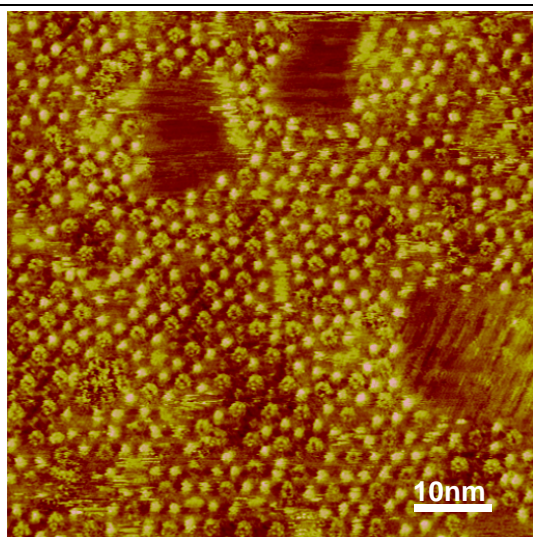
# Single molecule studies of cyclic peptides using molecular matrix at liquid/solid interface by scanning tunneling microscopy

Yibing Wang<sup>†</sup>, Lin Niu<sup>†</sup>, Yibao Li, Xiaobo Mao, Yanlian Yang\*, Chen Wang\*

National Center for Nanoscience and Technology, Beijing 100190, P. R. China.

<sup>†</sup> These authors contributed equally to this work.





**Figure S2.** Large scale STM image of CsA-Mg<sup>2+</sup> complexes included in StOF-COOH<sub>3</sub> molecular matrix (70.0 nm × 70.0 nm). Tunneling conditions:  $I = 60.0$  pA,  $V = 912.8$  mV.