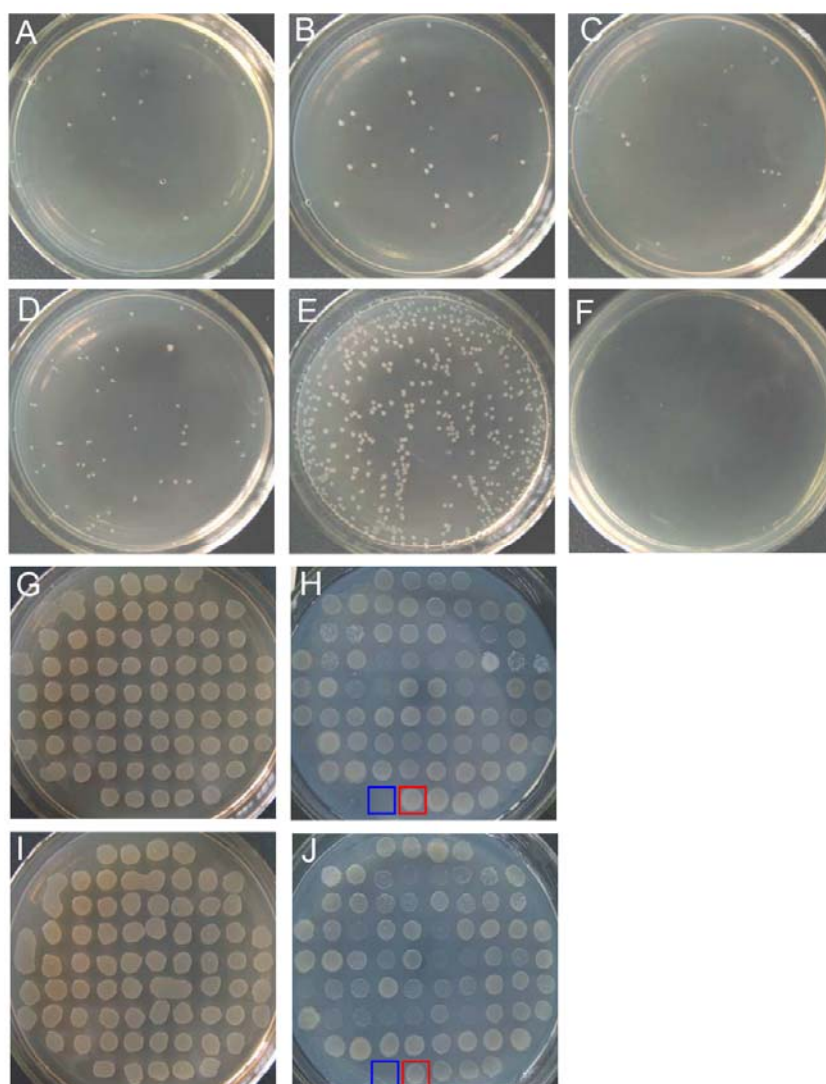


**Fig S1. Representative plates from the first and second PPI screening.**



BacterioMatch II two-hybrid system (Stratagene) was used to detect protein-protein interactions of *M. tuberculosis*, as described in the “Materials and Methods”. **A-F, Representative plates from the first PPI screening.** pBT-Rv0695 (A), pBT-Rv1160 (B), pBT-Rv2392(C) and pBT-Rv3312A (D) was transformed into the pTRG-MtbORF library and the co-transformants were grown on the screening plates. The co-transformant containing pBT-LGF2 and pTRG-Gal11P (E) was used as a positive control. The co-transformant containing pBT and pTRG (F) was used as negative control. **G-J, Representative plates from the second PPI screening.** G and I: plates minus 8 µg/mL streptomycin (str) and 8 mM 3-amino-1,2,4-triazole (3-AT). H and J: plates plus 8 µg/mL str and 8 mM 3AT Red square represents the positive control and blue square represents the negative control.