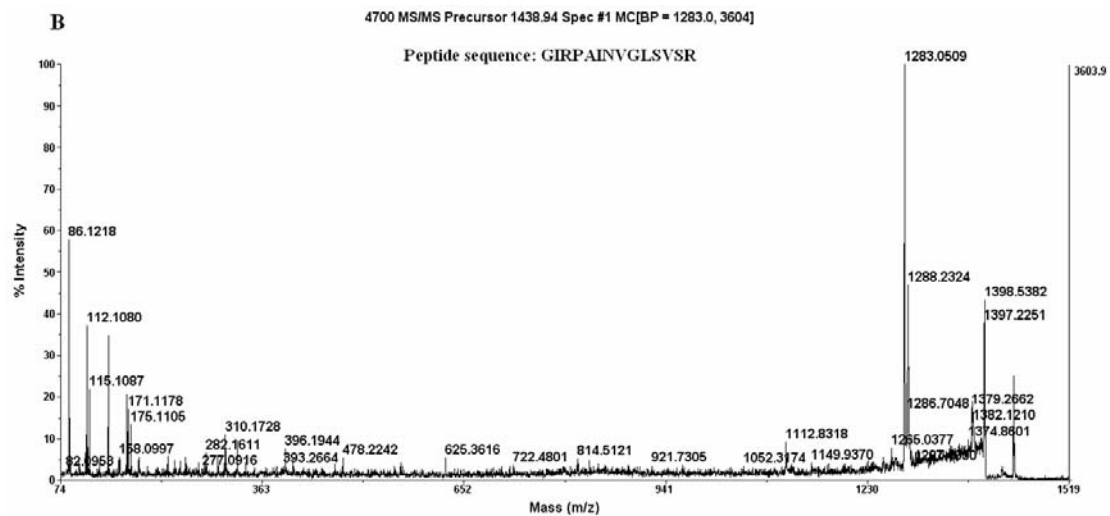
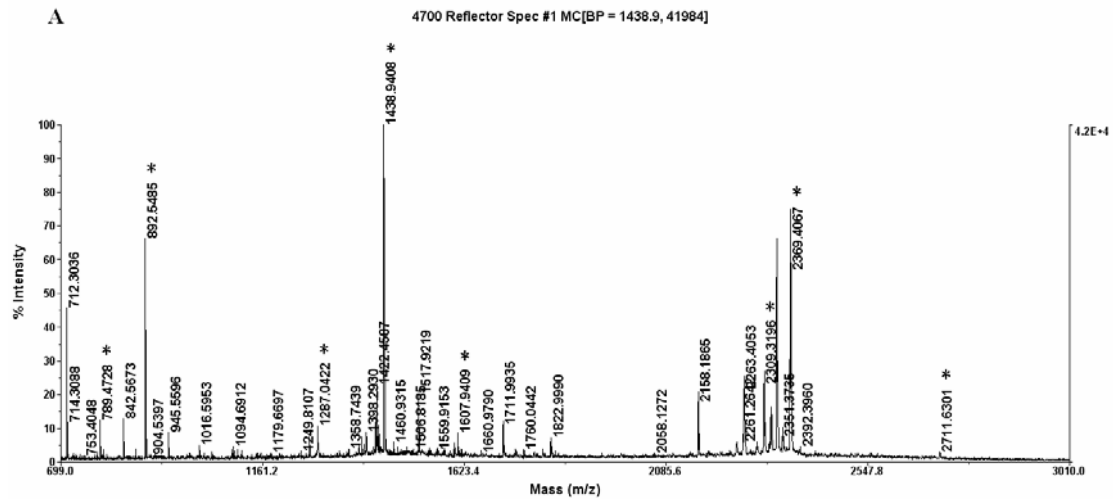
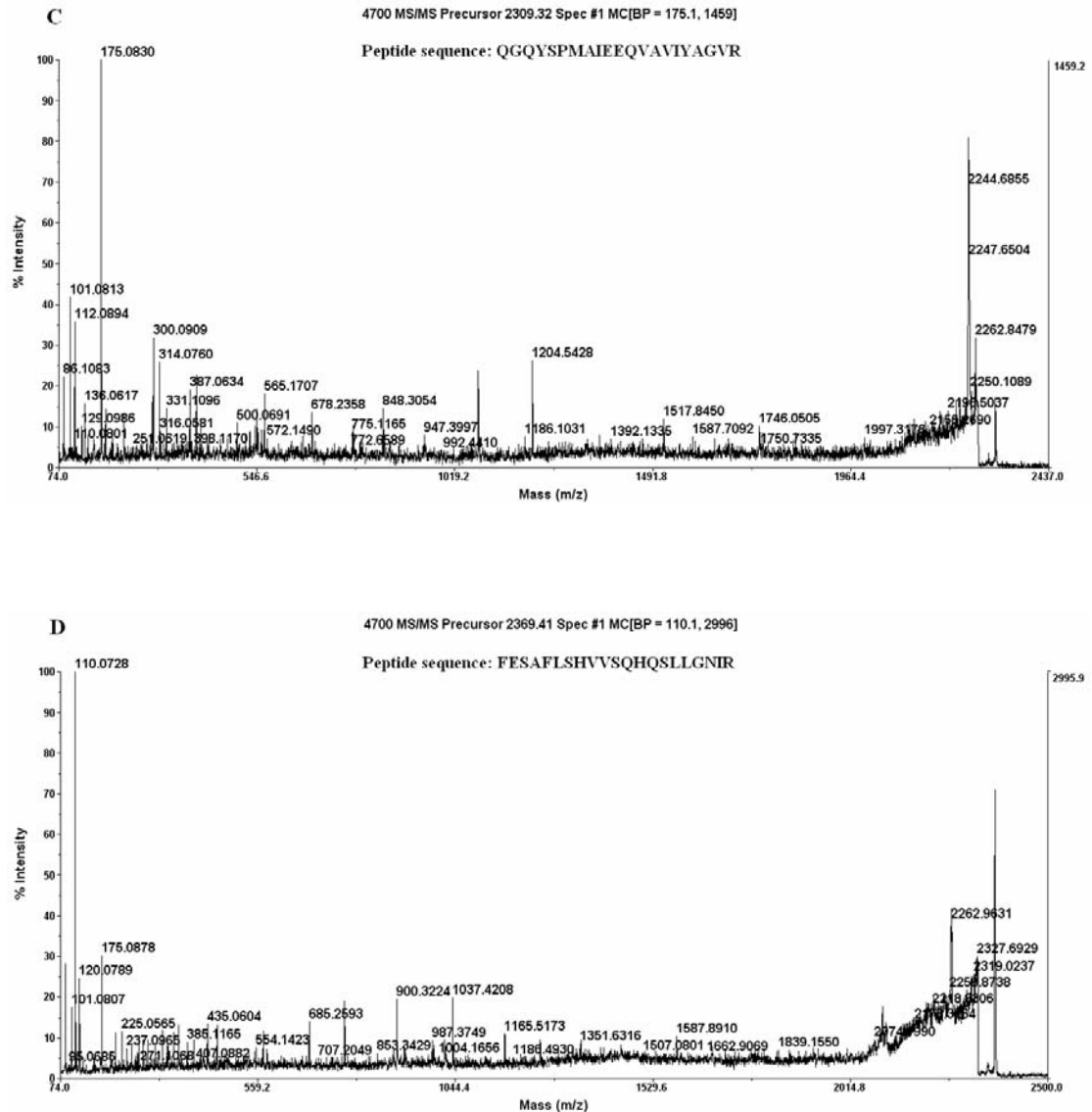


Additional file 3. Identification of F1-ATPase protein by PMF and MS/MS





Additional file 3. F1-ATPase protein identified by PMF and MS/MS. (A) MALDI peptide mass fingerprint of F1-ATPase. * indicated matched peptides, some of them were further identified by MS/MS. (B) MS/MS profile of the peptide with a mass of 1438.94 Da. The ion score was 25. (C) MS/MS profile of the peptide with a mass of 2309.32 Da. The ion score was 94. (D) MS/MS profile of the peptide with a mass of 2369.41 Da. The ion score was 113.