

Figure 1S. Experimental set-up of the on-line MISPE-LC-FLD system. (a) conditioning, loading and washing; (b) elution and chromatographic separation.

Figure 2S. Scanning electron micrographs of the MIP materials synthesized using ENRO as the template, MAA and HEMA as functional monomers, and EDMA as the crosslinker (ratio 1:4:4:10).

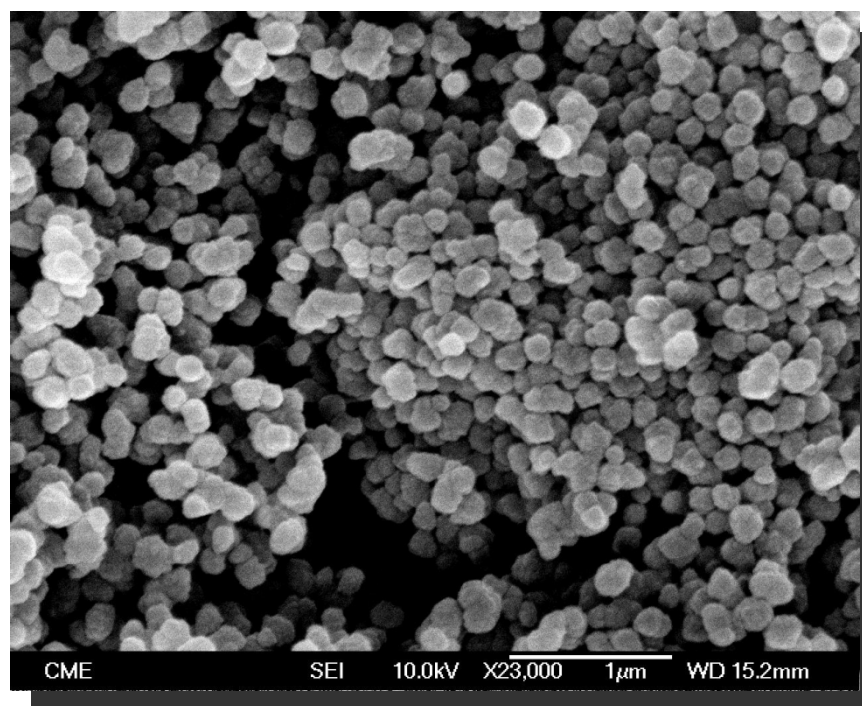


Figure 3S. Scanning electron micrographs of the (A) MIP and (B) NIP materials applied in the optimized on-line MISPE coupled to LC-FLD method.

