

Supporting Information

Real-time and label-free detection of cellular response to signaling mediated by distinct subclasses of epidermal growth factor receptors

*Jennifer Y. Chen, Minghong Li[§], Lynn S. Penn, Jun Xi**

Chemistry Department, Drexel University, 3141 Chestnut Street, Philadelphia, PA 19104

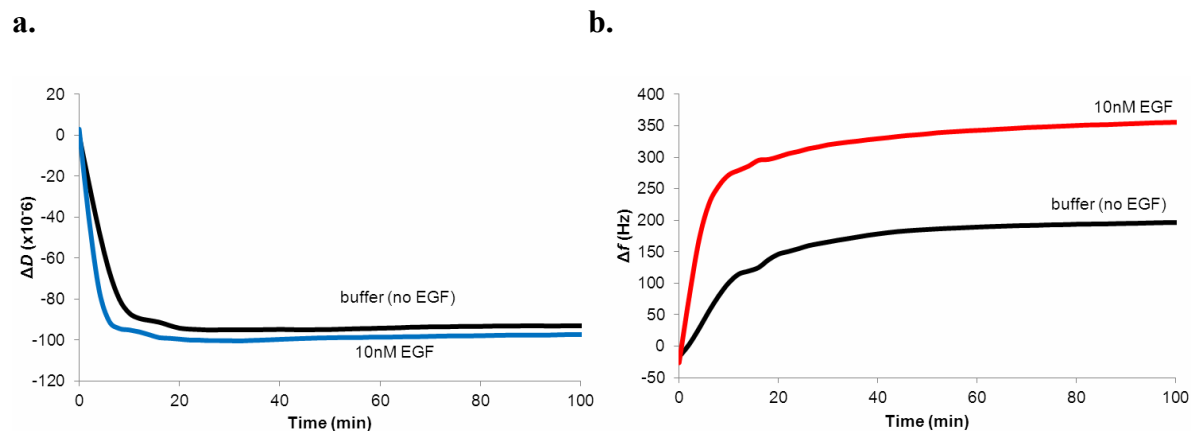


Figure S1. Baselines for Figure 1 prior to the addition of EGF. **(a)** Baselines for Figure 1a. **(b)** Baselines for Figure 1b. This figure shows that stable baselines were established for the measurements described in Figure 1. All the baselines were re-zeroed prior to the addition of EGF and the collection of the data shown in Figure 1.

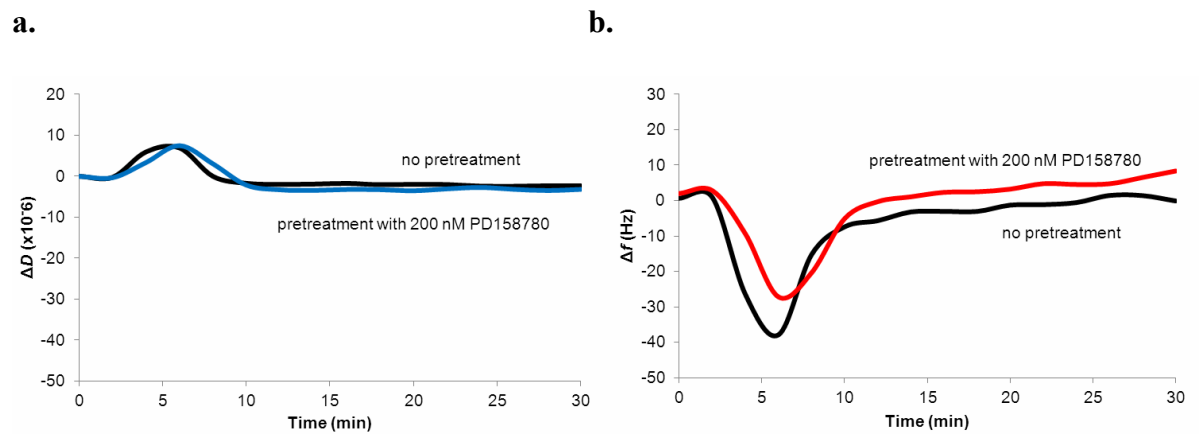
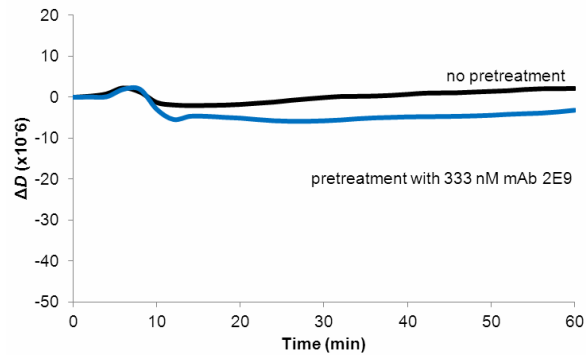


Figure S2. Baselines for Figure 2 prior to the addition of EGF. **(a)** Baselines for Figure 2a. **(b)** Baselines for Figure 2b. This figure shows that stable baselines were established for the measurements described in Figure 2. All the baselines were re-zeroed prior to the addition of EGF and the collection of the data shown in Figure 2.

a.



b.

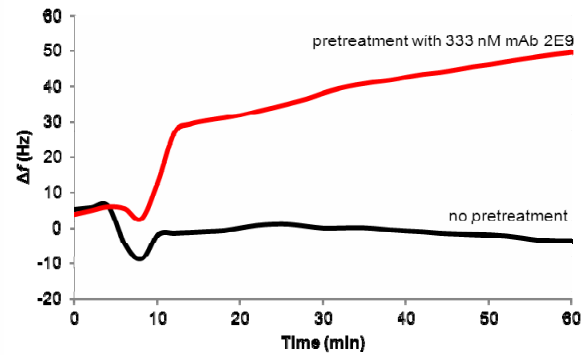


Figure S3. Baselines for Figure 3 prior to the addition of EGF. **(a)** Baselines for Figure 3a. **(b)** Baselines for Figure 3b. This figure shows that stable baselines were established for the measurements described in Figure 3. All the baselines were re-zeroed prior to the addition of EGF and the collection of the data shown in Figure 3.

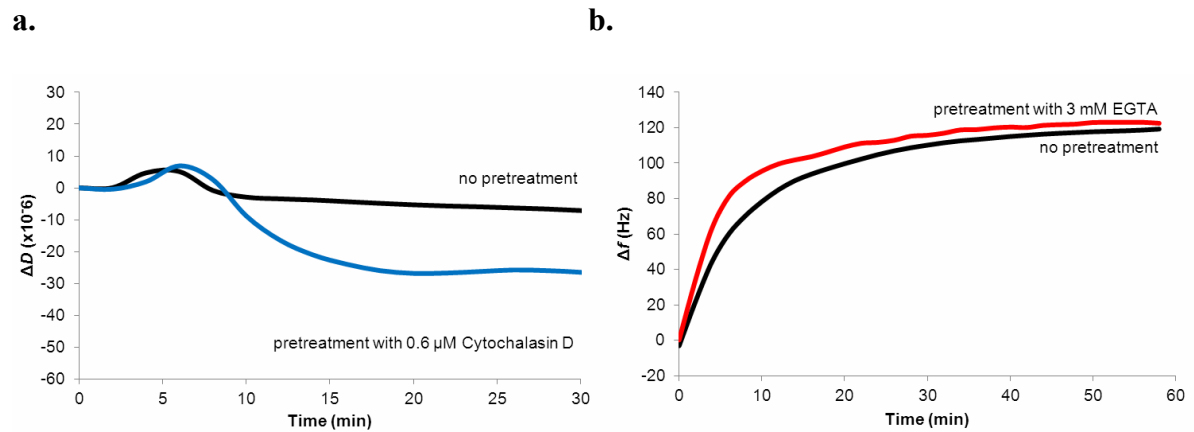


Figure S4. Baselines for Figure 5 prior to the addition of EGF. **(a)** Baselines for Figure 5a. **(b)** Baselines for Figure 5b. This figure shows that stable baselines were established for the measurements described in Figure 5. All the baselines were re-zeroed prior to the addition of EGF and the collection of the data shown in Figure 5.

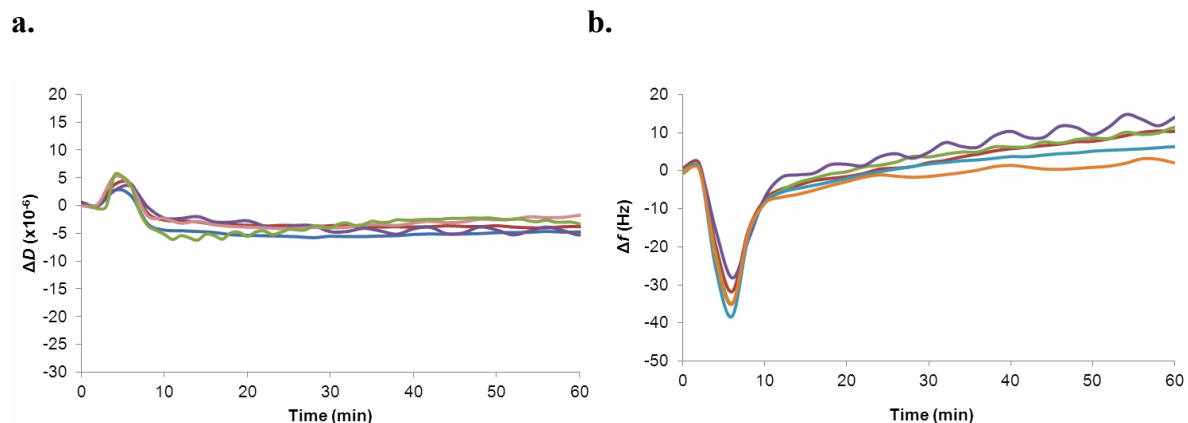


Figure S5. Quintuple QCM-D measurements of removal and addition of the assay buffer. **(a)** ΔD -responses. The average ΔD -response: at 6 min, 3.6 ± 1.2 ; at 50 min, 4.0 ± 0.9 . **(b)** Δf -responses: at 6 min, 33.6 ± 3.4 . Both figures show that the peaks and valleys of all five replicate measurements appear in the same time window and have the essentially same magnitude. This validates the technique employed in the QCM-D experiments.