

Figure S1. Flow cytometric dot-plot image of the cecal bacterial counts. The two-color dot plot discriminated between SYTO BC-stained variable cells (green), double-stained injured cells (pink) and PI-stained dead cells (red).

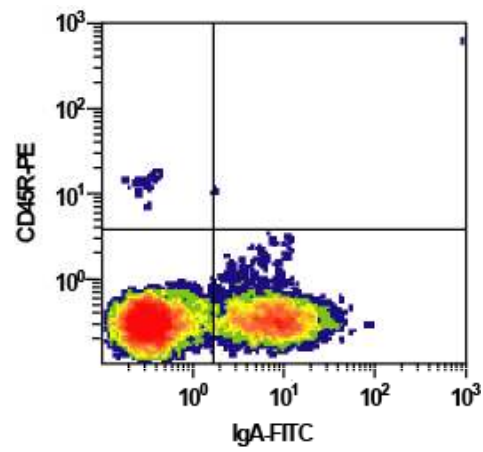


Figure S2. Flow cytometric dot-plot image of IgA plasma cells in the cecum. Cells were stained with FITC-labeled anti-rat IgA and with PE-labeled anti-rat CD45R. IgA plasma cells were defined as IgA<sup>+</sup> CD45R<sup>low</sup> cells (lower-right region).

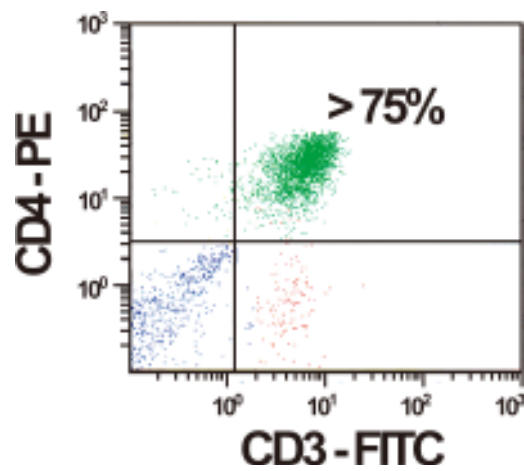


Figure S3. Purity analysis of cecal lamina propria CD4<sup>+</sup> T cells (CD3<sup>+</sup> CD4<sup>+</sup> cells) using a flow cytometer. Enriched CD4<sup>+</sup> T cell populations were obtained by negative selection using a magnetic cell sorting technique.