

Examination of Surface Adsorption of Cetyltrimethylammonium Bromide and Sodium Dodecyl Sulfate

Hiromichi Nakahara, Osamu Shibata,* and Yoshikiyo Moroi*

Department of Biophysical Chemistry, Faculty of Pharmaceutical Sciences,
Nagasaki International University; 2825-7 Huis Ten Bosch,
Sasebo, Nagasaki 859-3298, Japan

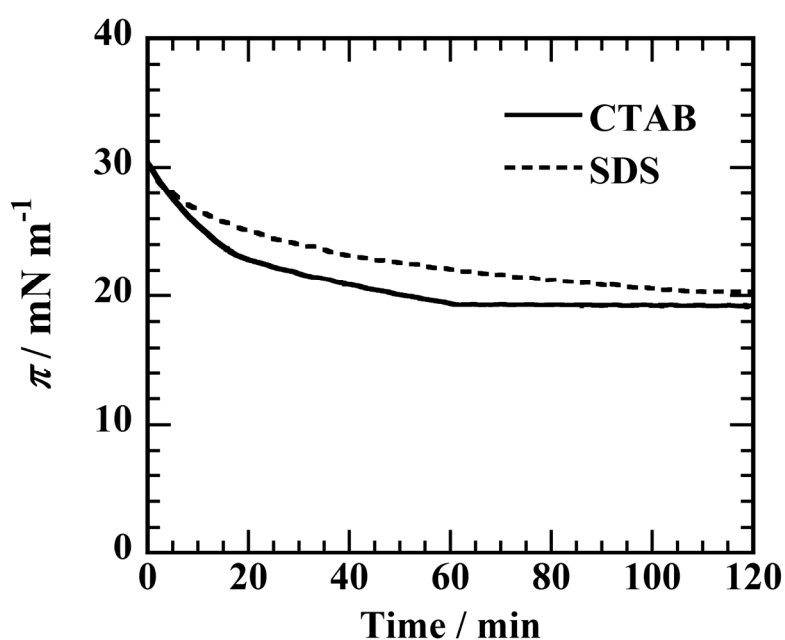


Figure S1 Time dependence of surface pressure (π) for CTAB and SDS monolayers on 5M NaBr and 5M NaCl at 298.2 K, respectively. The Langmuir monolayers were compressed up to 30 mN m⁻¹ and then the $\pi-t$ measurements were started.

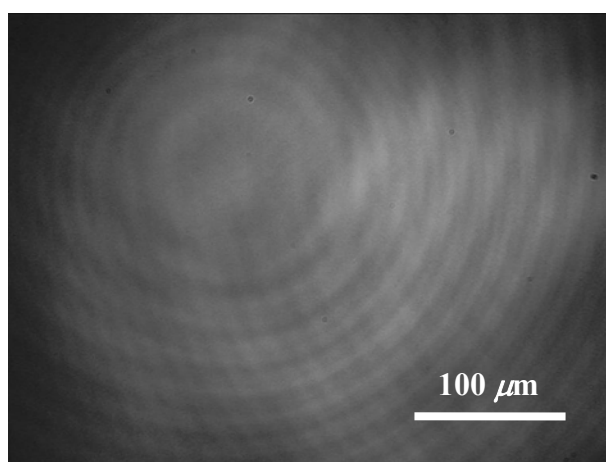


Figure S2 BAM image for just water at 298.2 K. The image corresponds to the area of $400\ \mu\text{m} \times 300\ \mu\text{m}$.