

Supporting Information

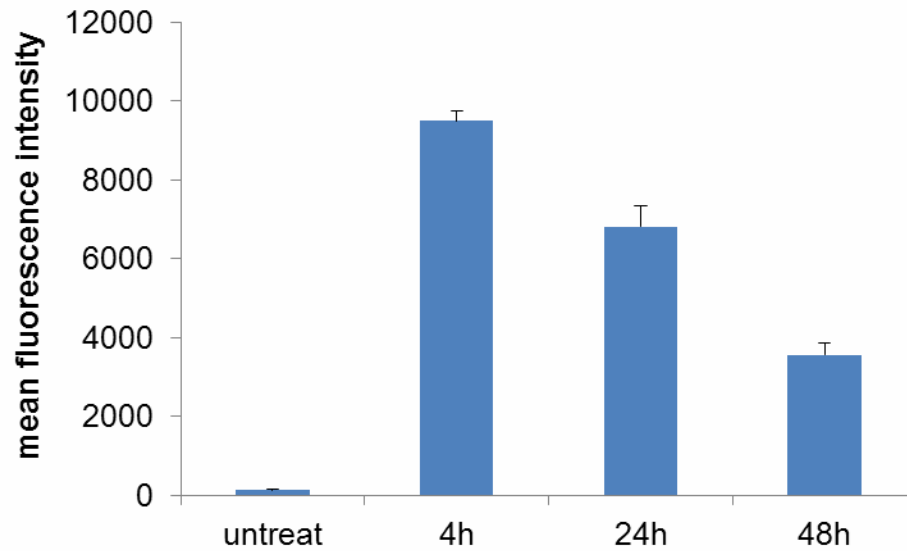


Figure 1s. Flow cytometry analysis of cellular uptake of empty lipoplexes 0, 24 and 48 hr post transfection. Fluoresence lipid, NBD PE, (1,2-diphytanoyl-*sn*-glycero-3-phosphoethanolamine-N-(7-nitro-2-1,3-benzoxadiazol-4-yl) (ammonium salt)) (Avanti Polar Lipids Inc. 810142P), was added to the formulation at molar ratio of 0.5.

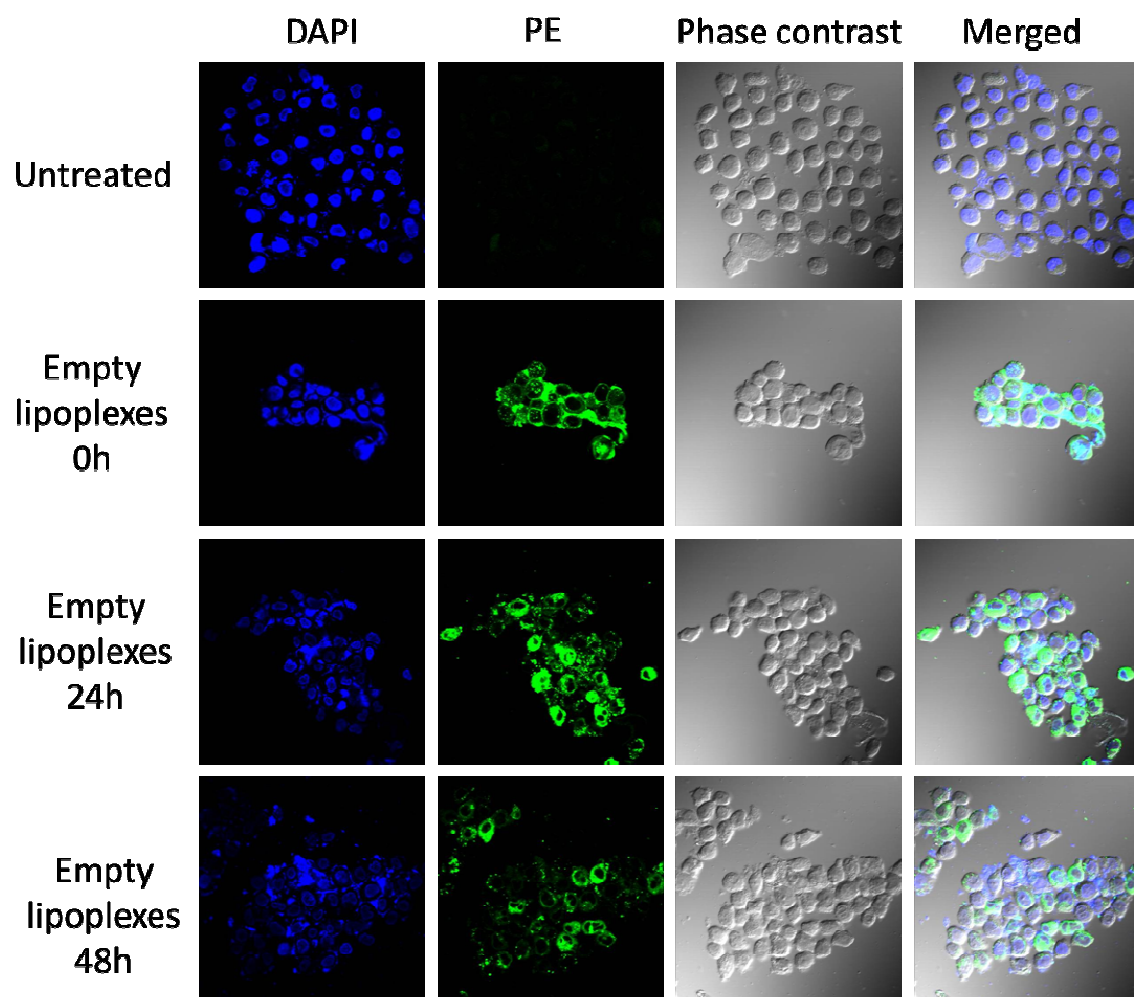


Figure 2s. Confocal microscopy analysis of cellular uptake of empty lipoplexes 0, 24 and 48 hr post transfection.