

Supplement Data

Figure S1. ESI mass spectra of Dst with the DNA duplex containing two ATAT sites at two concentration ratios of compound to binding site: 1:1 and 2:1. The label [n: 2] (n=1, 2, 3, 4) represents the two binding sites that have been bound by n ligands of Dst at five charge states (z= 10, 9, 8, 7, 6).

Figure S2. ESI mass spectra of Dst with the DNA duplex containing two ATATA sites at two different concentration ratios, 1:1 and 2:1, of compound to binding sites. The labels are as in Figure S1.

Figure S3. ESI mass spectra of Dst with the DNA duplex containing two ATATAT sites in two different concentration ratios to binding site: 1:1 and 2:1. The labels are as in Figure S1.

Figure S4. ESI mass spectra of Dst with the 22 base pair DNA hairpin containing one ATATA site in two different concentration ratios, 1:1 and 2:1, compound to binding site. The label [1:1] and [2:1] represent the binding site that has been bound by one or two ligands of Dst at two charge states (z=5, 4).

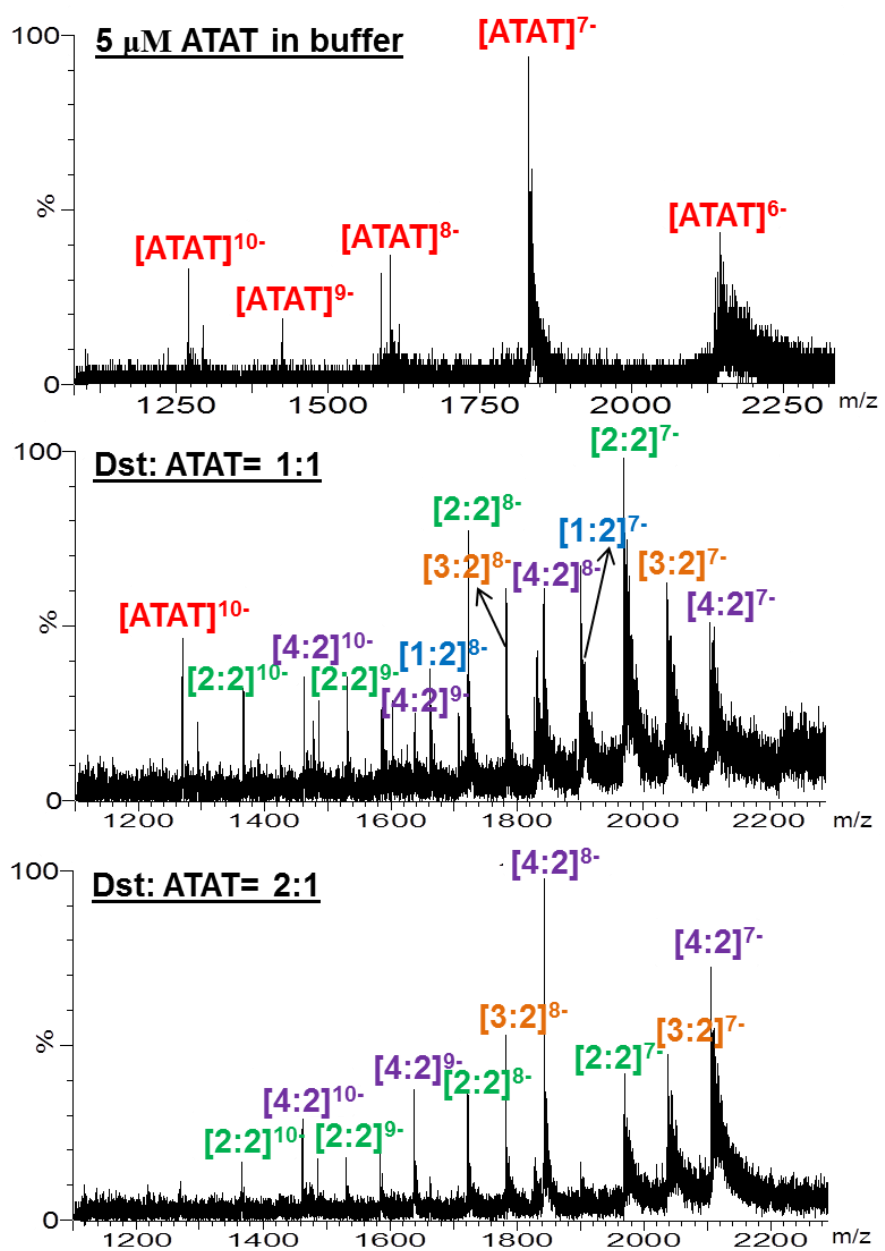


Figure S1

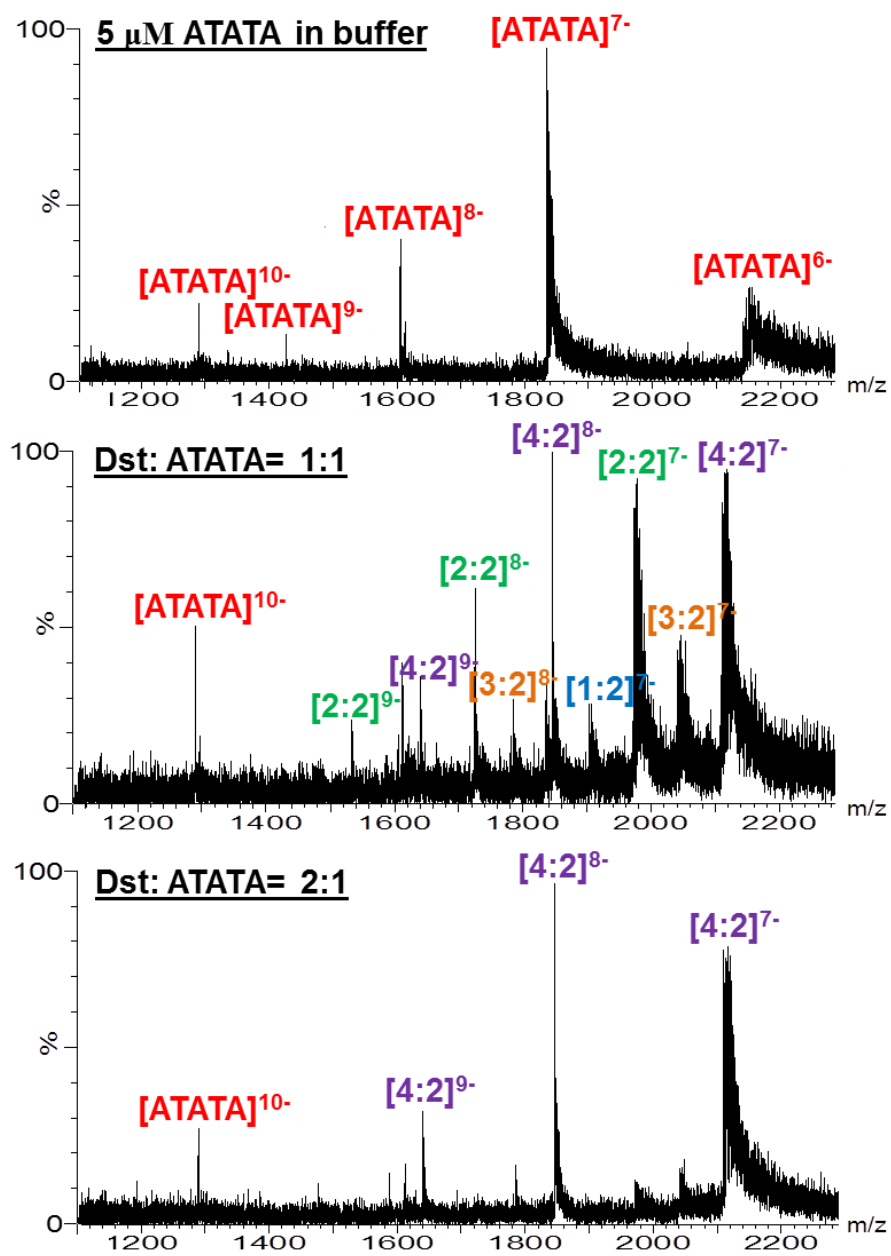


Figure S2

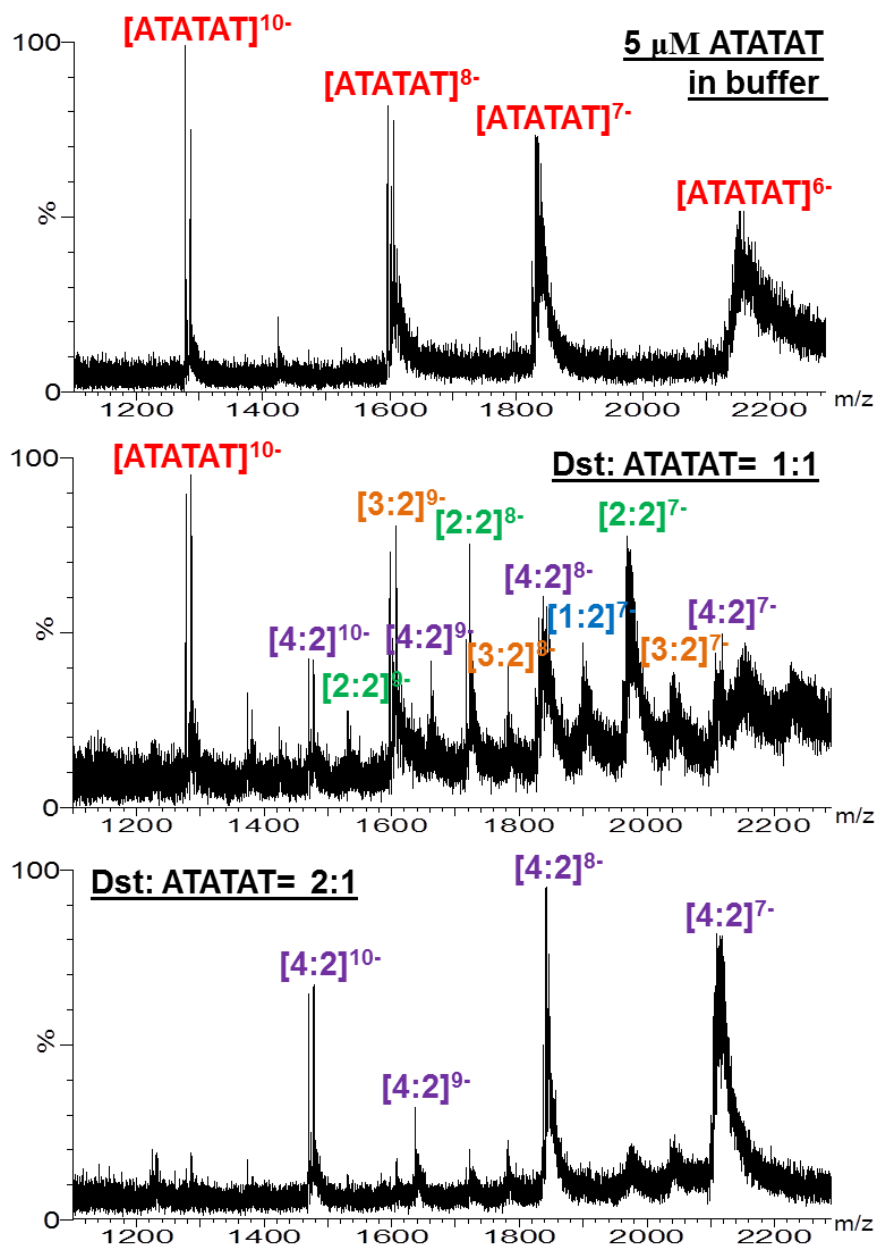


Figure S3

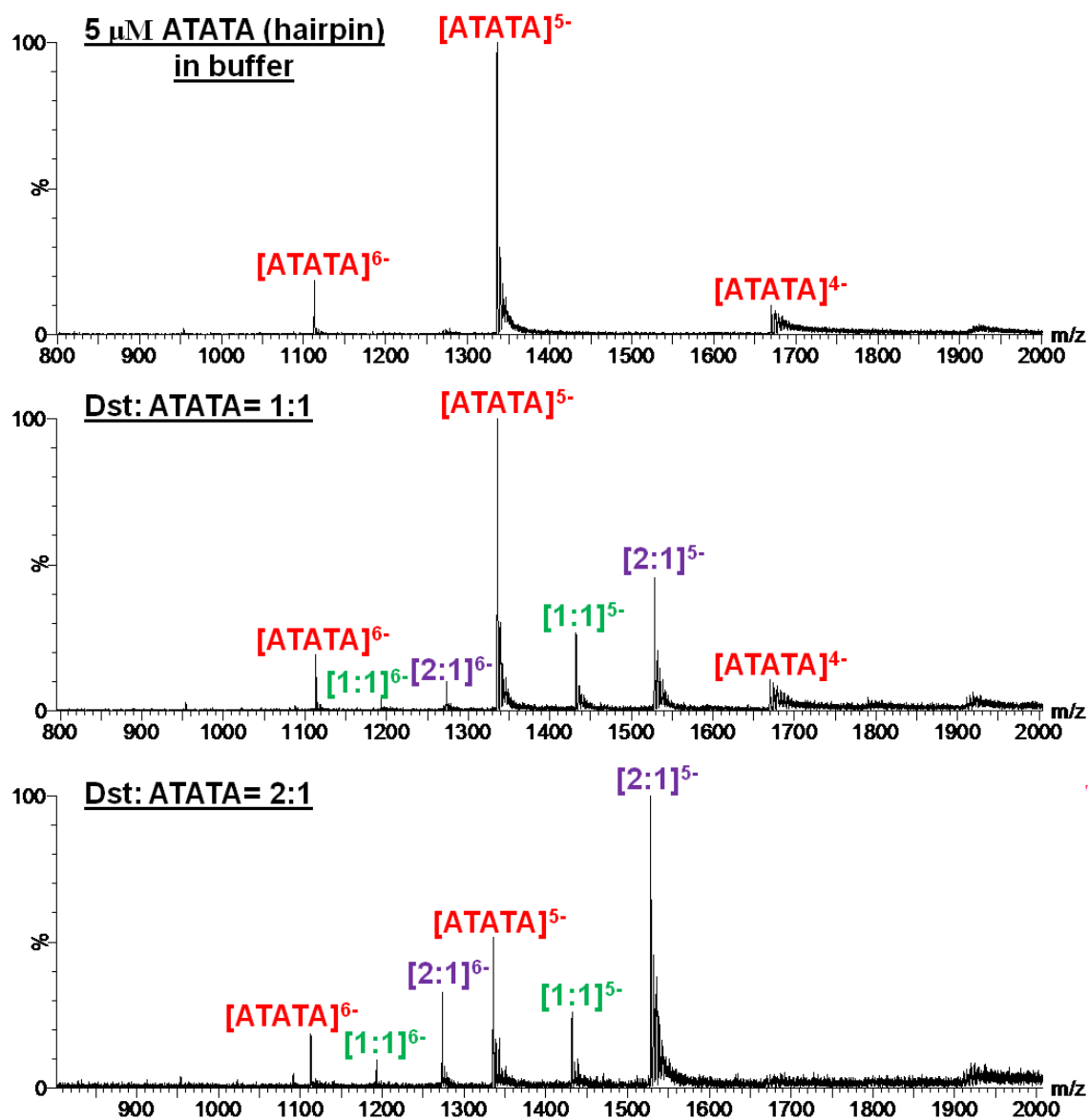


Figure S4