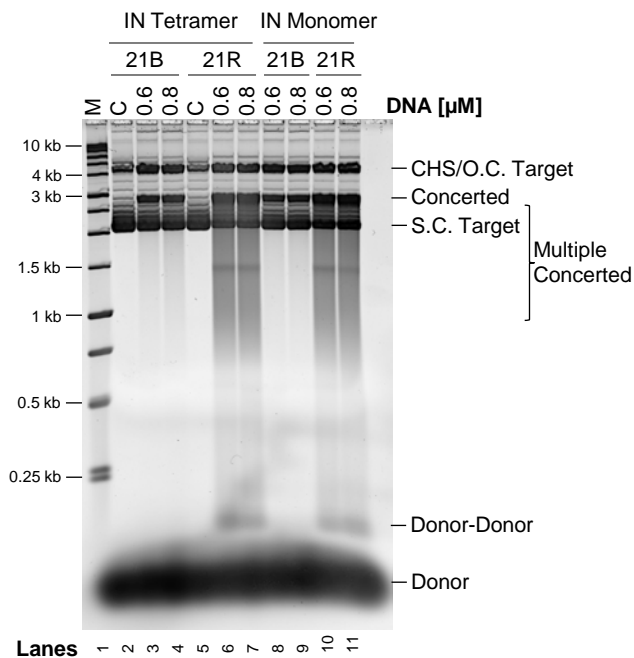


## Supporting Information Figure S4



Supporting Information Figure S4. HIV IN monomers and tetramers equally promote concerted integration. A preparation of HIV IN monomers (10.3  $\mu$ M) was incubated with 50  $\mu$ M  $\text{ZnCl}_2$  for 30 min on ice producing tetramers. Both preparations of IN were assayed at 0.5  $\mu$ M (as dimers) with the 21B and 21R substrates (top). The tetramer assays were in lanes 2 to 7 and the monomer assays were in lanes 8 to 11. Lanes 2 and 5, marked C, are without IN. Lane 1 contains molecular weight markers.