

Supporting Information

Influence of the Pd(II) coordination model on the catalytic performance of Pd-PPh₂-SBA-15 in C-C bond forming reactions

Jianlin Huang,^a Meitao Wang,^a Siyong Zhang,^b Bingwen Hu,^{*,b} Hexing Li^{*,a}

^aThe Education Ministry Key Lab of Resource Chemistry, Shanghai Key Laboratory of Rare Earth Functional Materials, Shanghai Normal University, Shanghai 200234, China.

^bPhysics Department & Shanghai Key Laboratory of Magnetic Resonance, East China Normal University, Shanghai 200062, China.

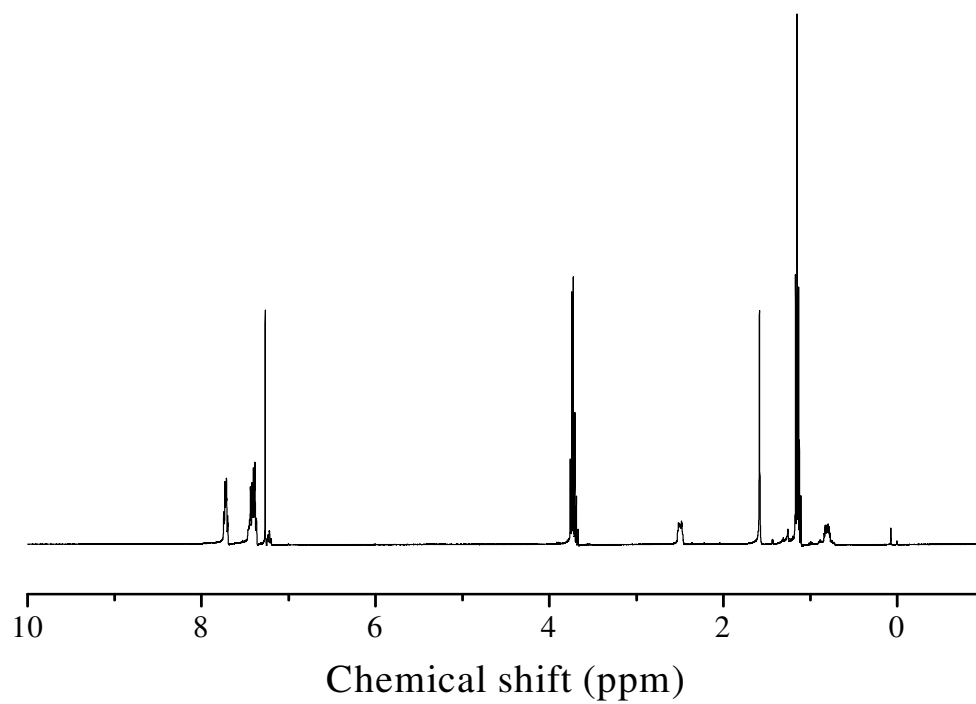


Figure S1. ^1H NMR spectra of $\text{PdCl}_2[\text{PPh}_2(\text{CH}_2)_2\text{Si}(\text{OCH}_2\text{CH}_3)_3]_2$ organometallic silane dissolved in CD_2Cl_2 .