

Figure S1

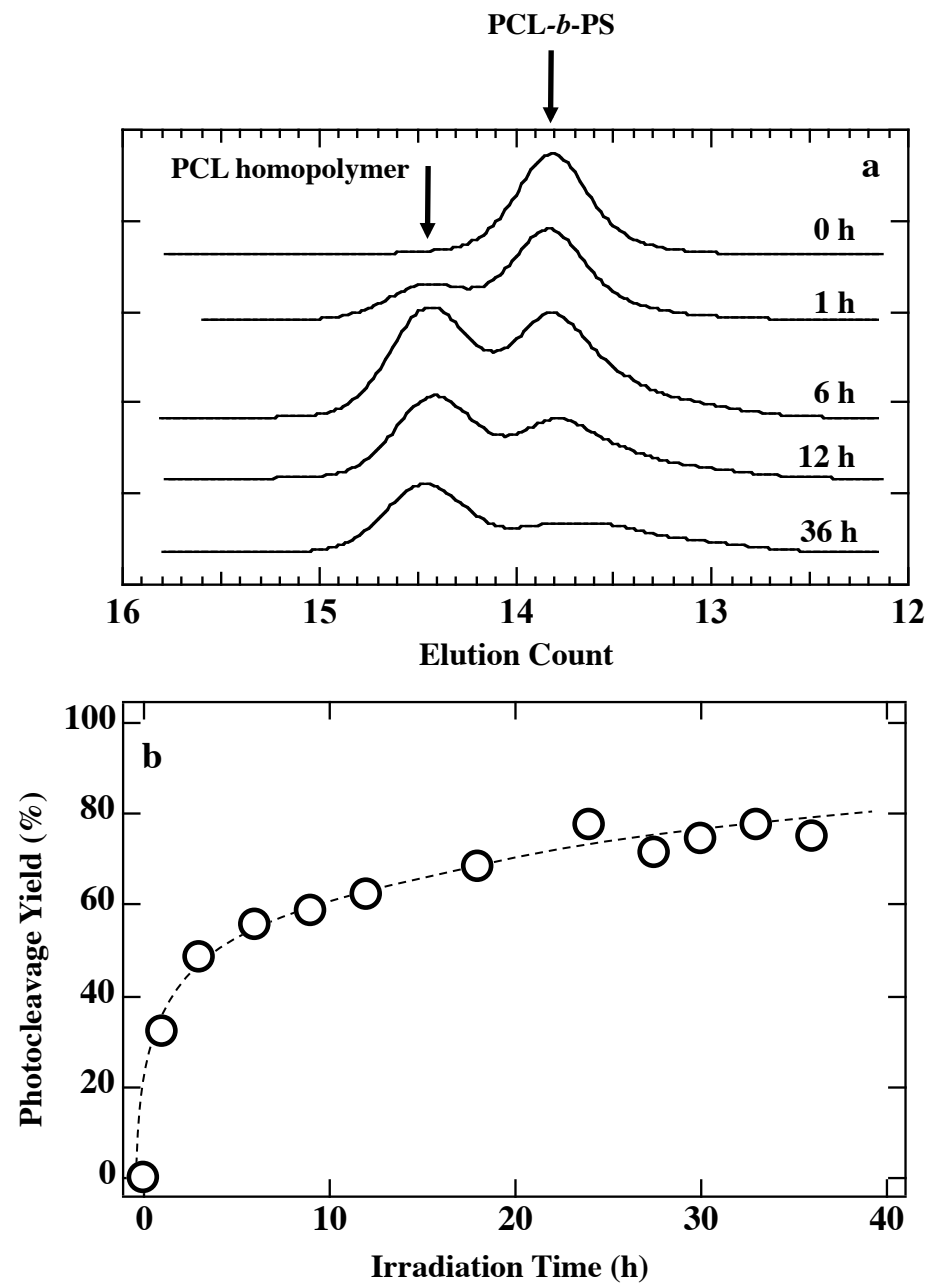


Figure S1. (a) GPC chart of PCL-*b*-PS copolymers with UV irradiation during various times indicated. (b) Photocleavage yield plotted against irradiation time of UV light.

Figure S2

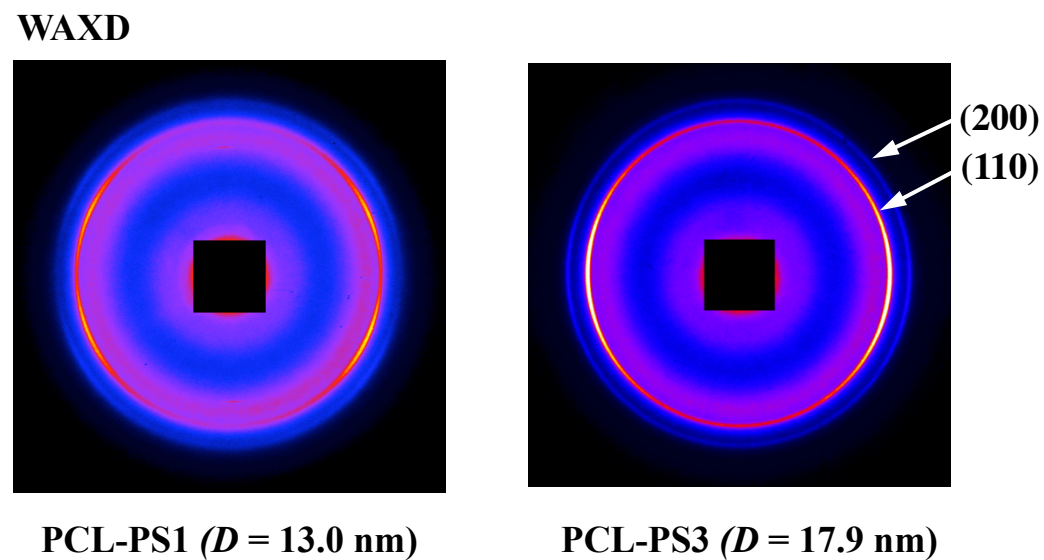


Figure S2. 2D-WAXD patterns viewed from X direction for PCL-PS1 ($D = 13.0$ nm) and PCL-PS3 ($D = 17.9$ nm) both crystallized at -40 °C. The X direction is perpendicular to the shear direction.

Figure S3

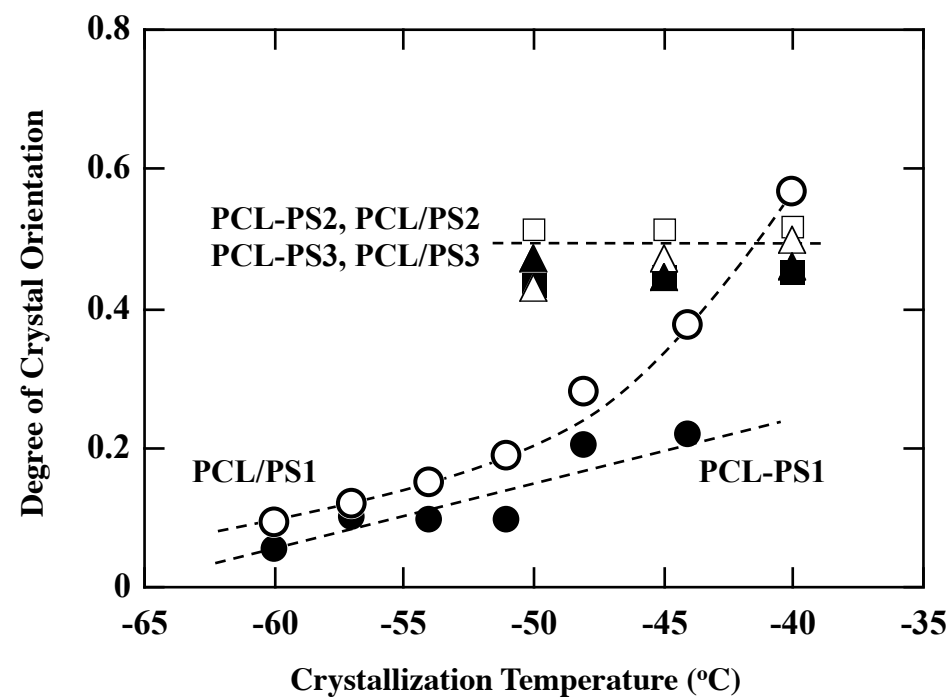


Figure S3. Degree of crystal orientation plotted against crystallization temperature for all the samples investigated.