

Supporting Information for:

Organo-Modified Layered Double Hydroxides Switch-On Chemiluminescence

By Mengchun Zhang, Dongmei Han, Chao Lu*, and Jin-Ming Lin

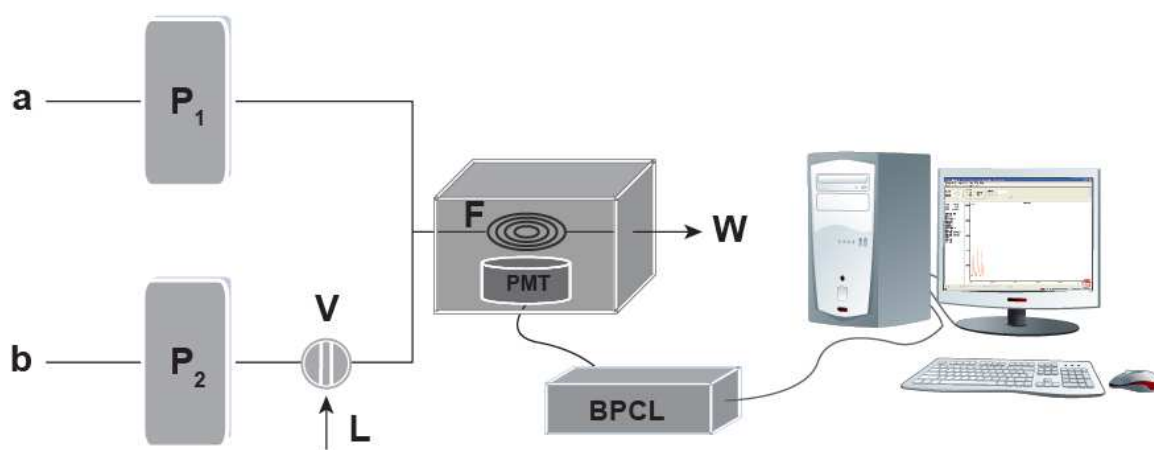


Figure S1 Schematic diagram of the flow injection CL detection system. (a) H_2O_2 ; (b) $NaIO_4$; (L) Mg-Al LDHs; (V) six-way injection valve; (W) waste; (P_1) and (P_2) peristaltic pumps; (F) flow cell; (PMT) photomultiplier tube.

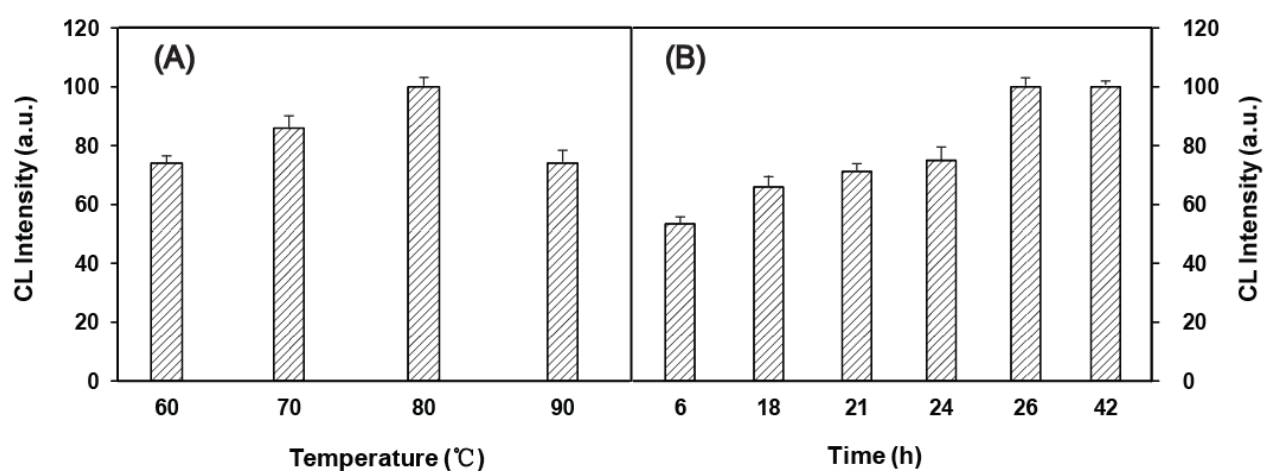


Figure S2 Effects of the Mg-Al-SDBS LDHs synthesis conditions on the IO_4^- - H_2O_2 CL system. (A): Effect of reaction temperature; (B): Effect of the reaction time. Experimental conditions are same as in Fig. 1.

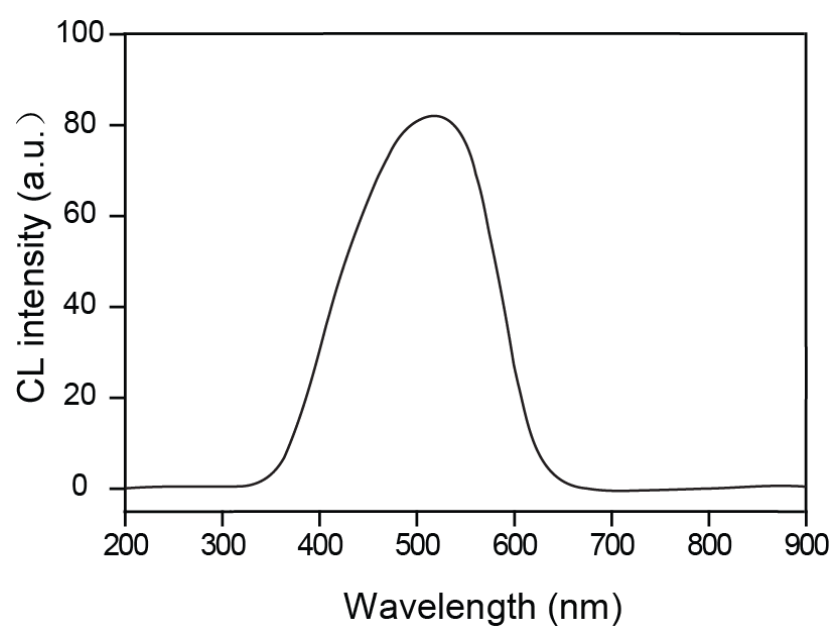


Figure S3 CL spectrum for the IO_4^- - H_2O_2 system in the presence of Mg-Al-SDBS LDHs.