

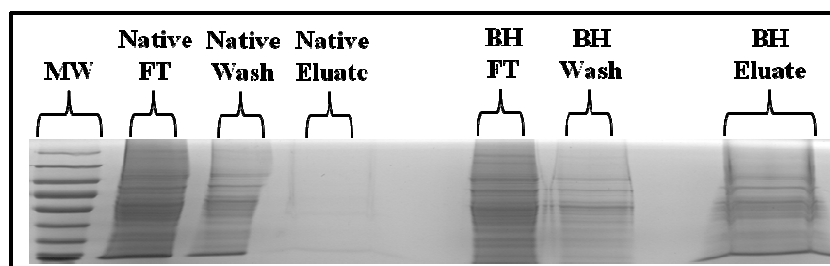
# Supplemental Figures

## Protein Carbonylation in a Murine Model for Early Alcoholic Liver Disease

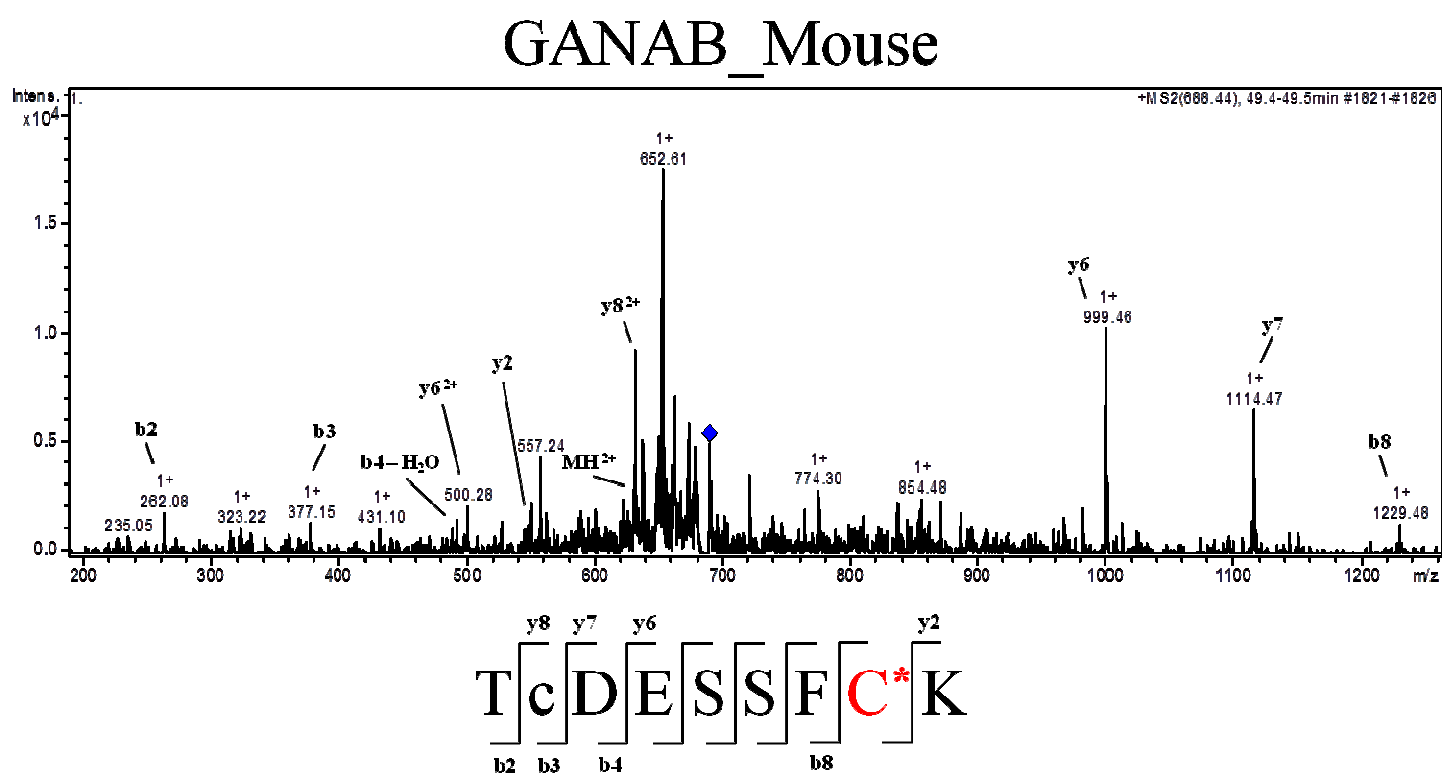
James J. Galligan<sup>1</sup>, Rebecca L. Smathers<sup>2</sup>, Kristofer S. Fritz<sup>2</sup>, L. Elaine Epperson<sup>3</sup>, Lawrence E. Hunter<sup>3</sup>  
and Dennis R. Petersen<sup>2\*</sup>

<sup>1</sup> Department of Pharmacology, School of Medicine, University of Colorado Denver, Aurora, CO. <sup>2</sup> Molecular Toxicology and Environmental Health Sciences Program, Department of Pharmaceutical Sciences, University of Colorado Denver, Aurora, CO. <sup>3</sup> Center for Computational Pharmacology, University of Colorado Denver, Aurora, CO 80045, USA

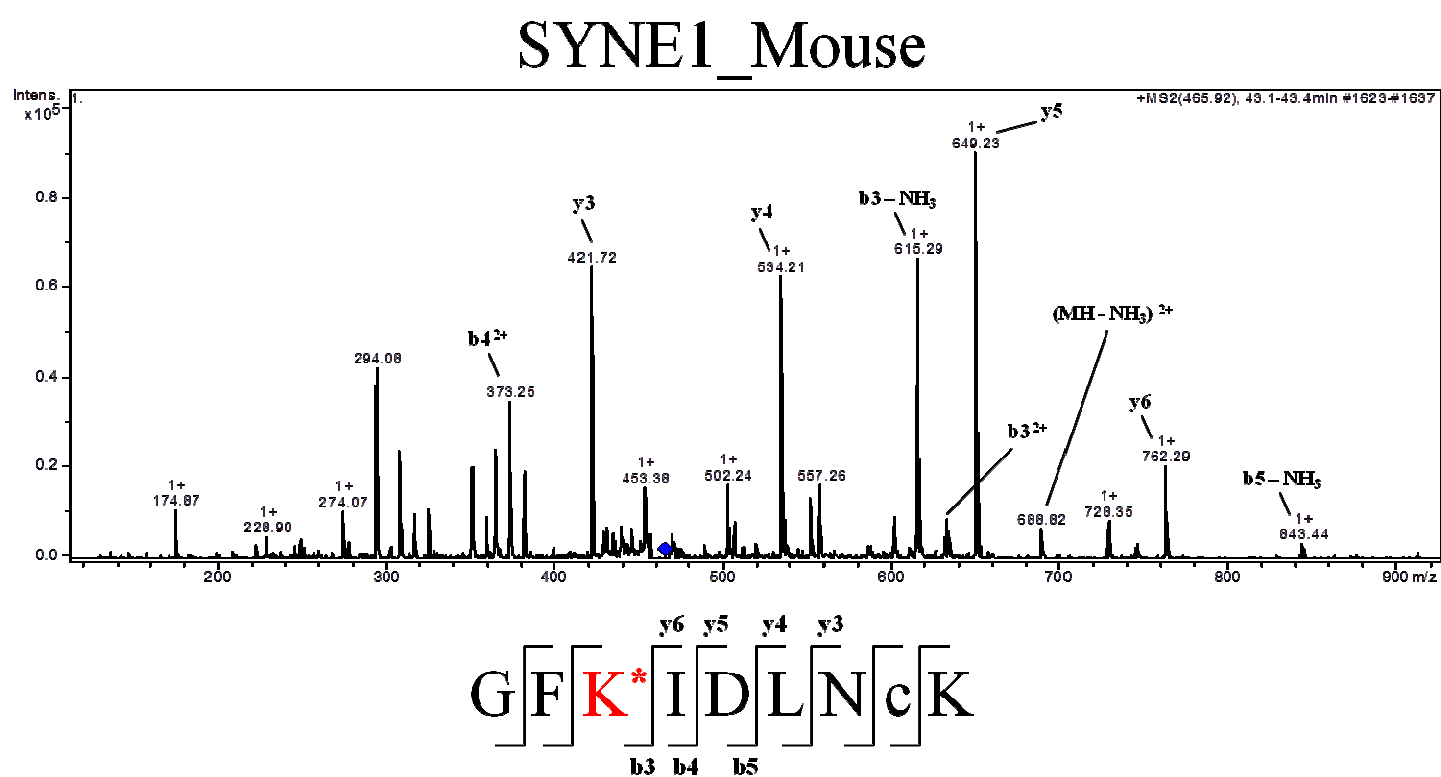
**Figure S1.** Validation of biotin-tagging and streptavidin. Native refers to unconjugated protein; FT is the column flowthrough; BH is all biotin-tagged proteins. The eluate lanes are post-streptavidin pulldown and demonstrates that only biotin-tagged proteins are bound and eluted from the columns.



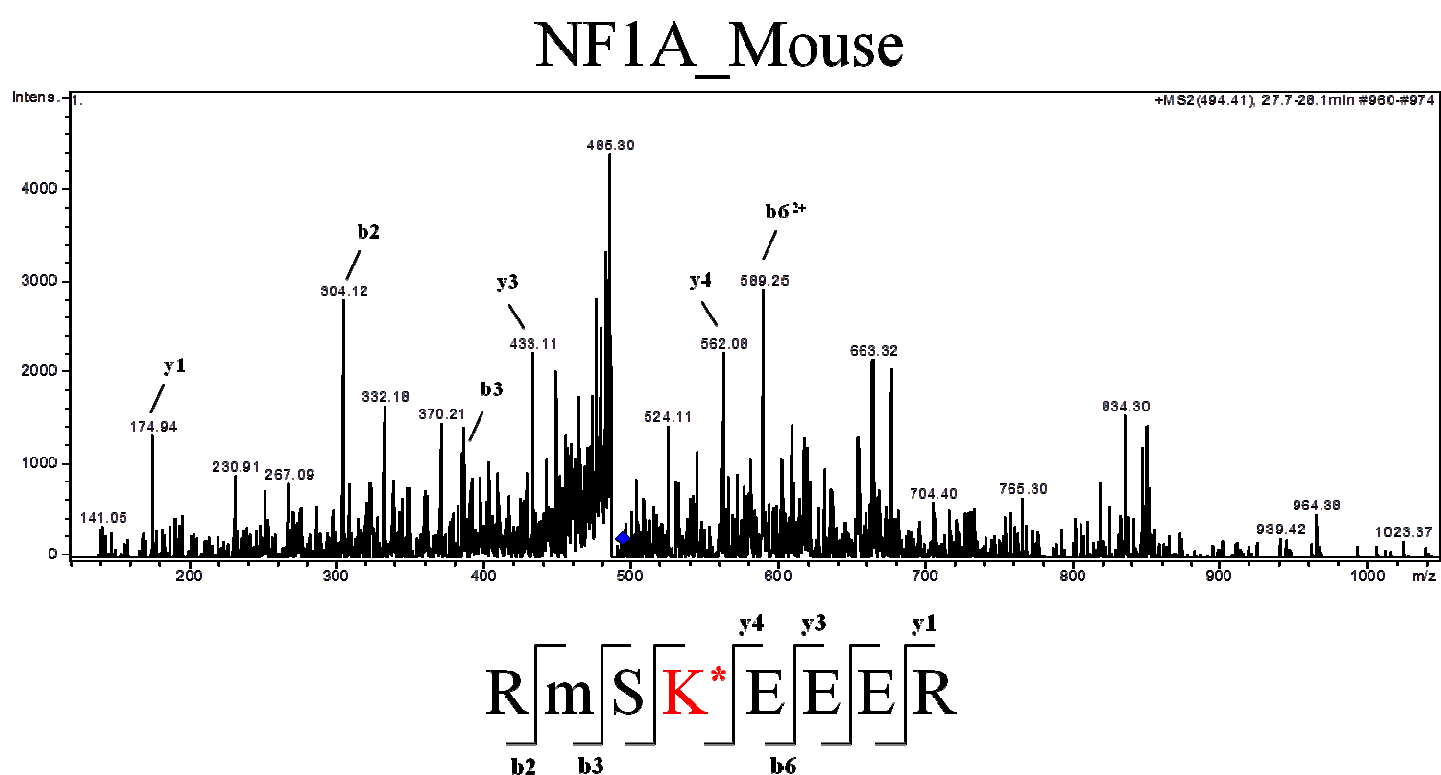
**Figure S2.** MS/MS spectrum of the biotin hydrazide, acrolein modified peptide identified from neutral alpha-glucosidase AB (GANAB\_Mouse). The adducted cysteine is indicated in red with \*. Lower case 'c' corresponds to carbamidomethyl modified cysteine.



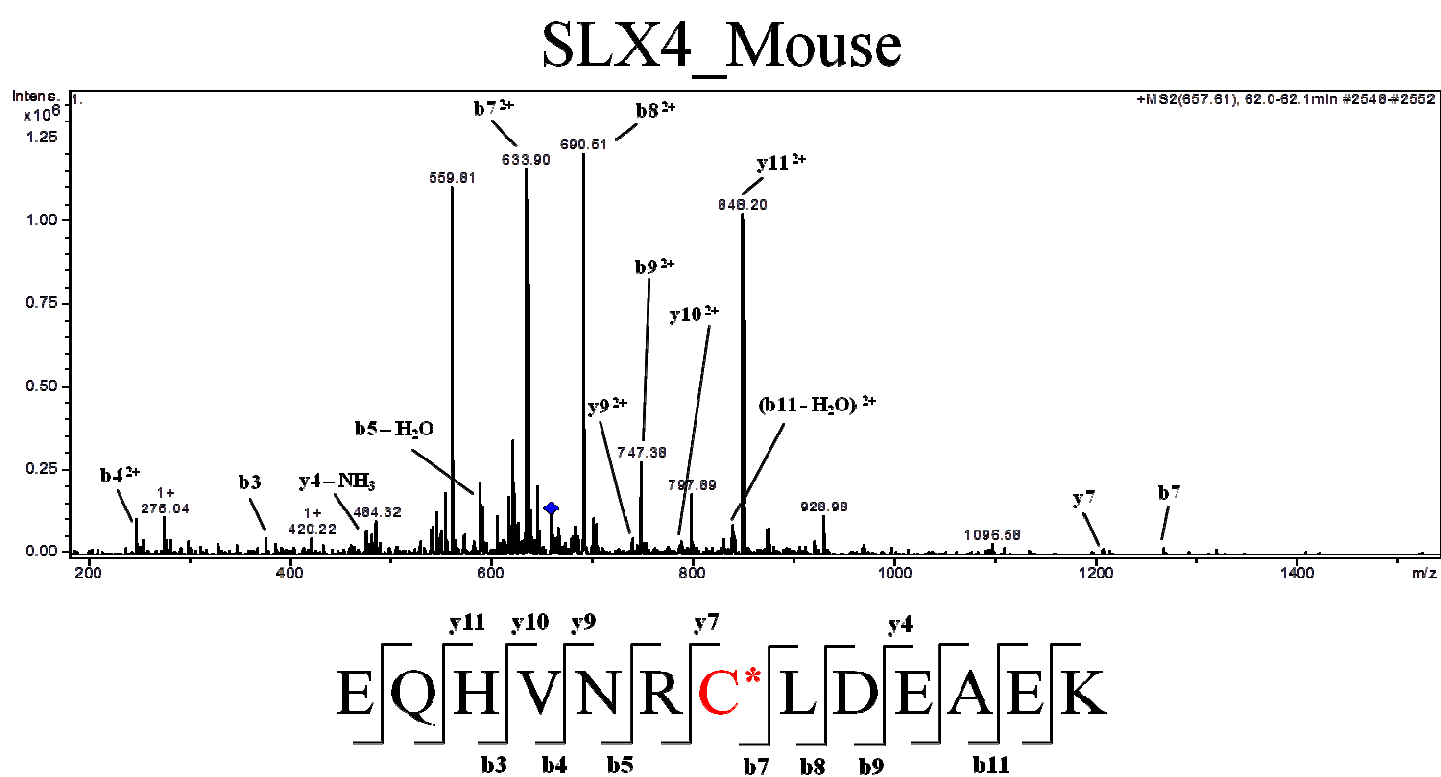
**Figure S3.** MS/MS spectrum of the biotin hydrazide, acrolein modified peptide identified from nesprin-1 (SYNE1\_Mouse). The adducted lysine is indicated in red with \*. Lower case 'c' corresponds to carbamidomethyl cysteine.



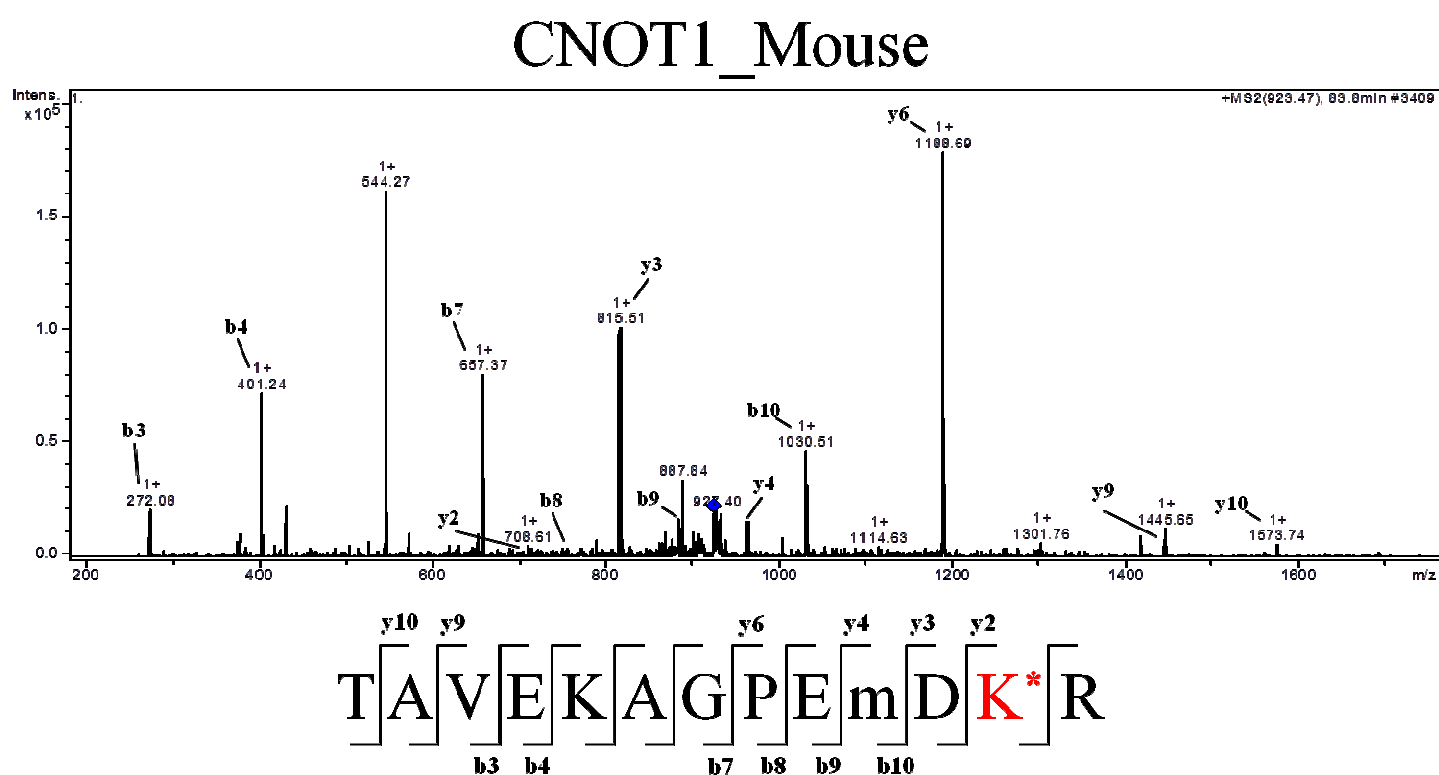
**Figure S4.** MS/MS spectrum of the biotin hydrazide, 4-HNE modified peptide identified from nuclear factor 1 A-type (NF1A\_Mouse). The adducted lysine is indicated in red with \*. Lower case 'm' corresponds to oxidized methionine.



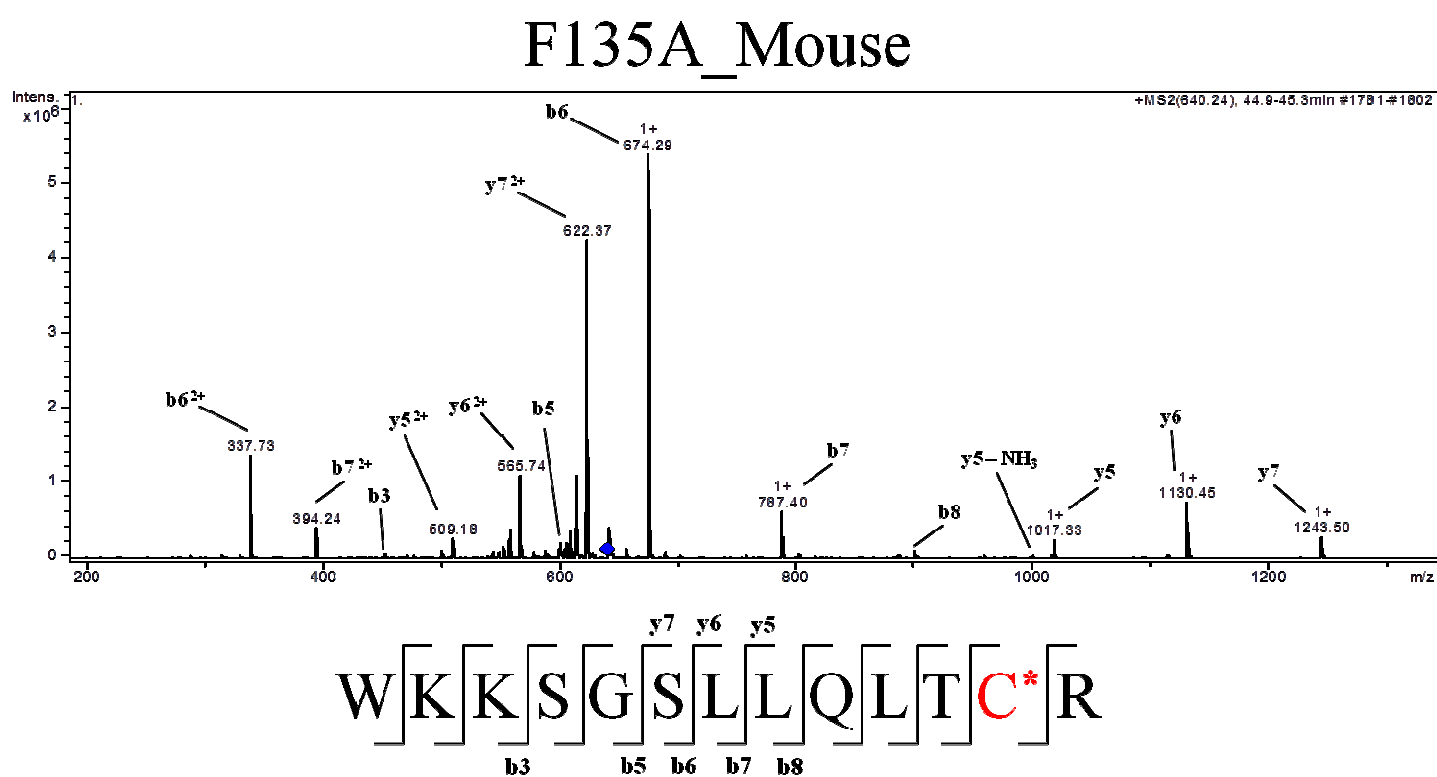
**Figure S5.** MS/MS spectrum of the biotin hydrazide, 4-HNE modified peptide identified from Structure-specific endonuclease subunit SLX4 (SLX4\_Mouse). The adducted cysteine is indicated in red with \*.



**Figure S6.** MS/MS spectrum of the biotin hydrazide, 4-ONE modified peptide identified from CCR4-NOT transcription complex subunit 1 (CNOT1\_Mouse). The adducted lysine is indicated in red with \*. Lower case 'm' corresponds to oxidized methionine.

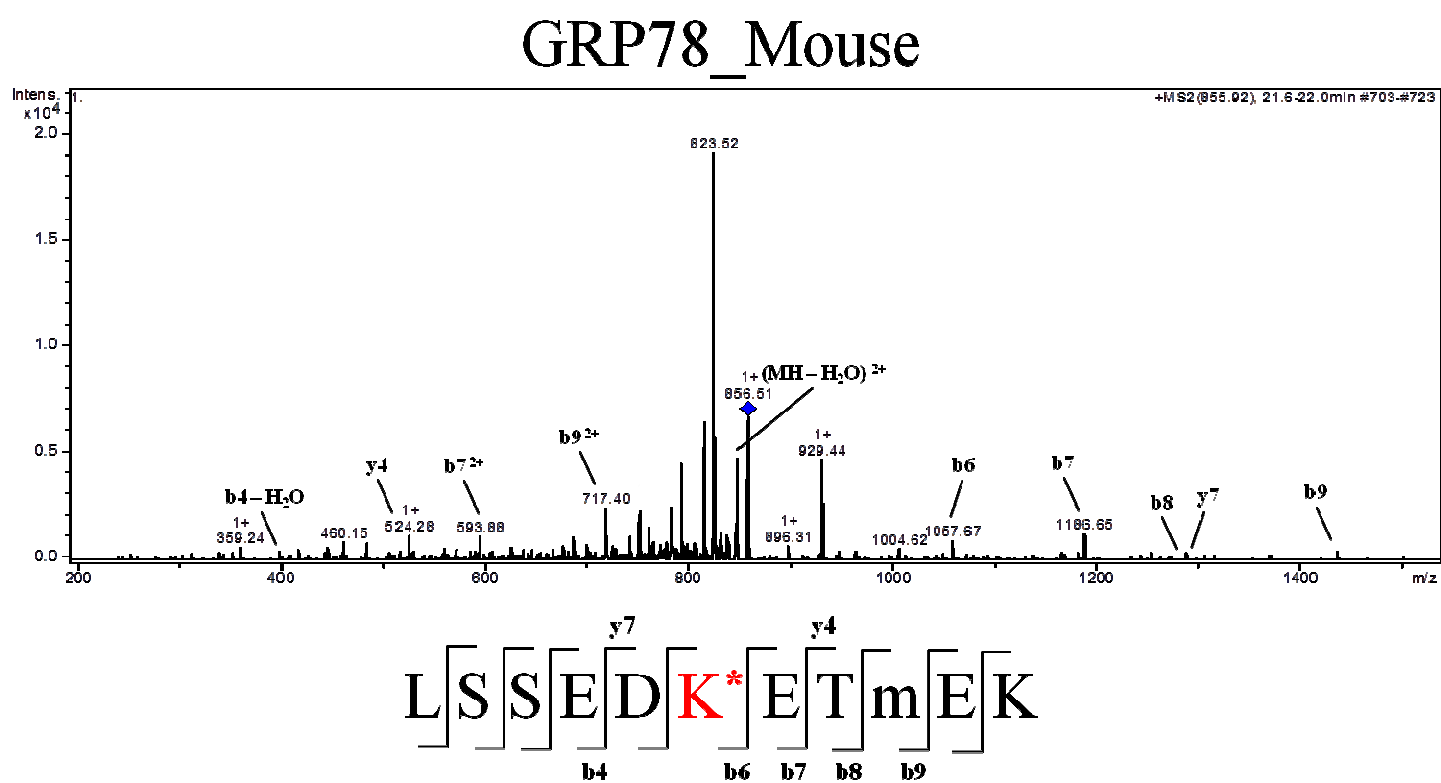


**Figure S7.** MS/MS spectrum of the biotin hydrazide, 4-ONE modified peptide identified from protein FAM135A (F135A\_Mouse). The adducted cysteine is indicated in red with \*.





**Figure S8.** MS/MS spectrum of the biotin hydrazide, 4-ONE modified peptide identified from 78 kDa glucose-regulated protein (GRP78\_Mouse). The adducted lysine is indicated in red with \*. Lower case 'm' corresponds to oxidized methionine.



**Figure S9.** MS/MS spectrum of the biotin hydrazide, 4-ONE modified peptide identified from Myosin-binding protein C, fast-type (MYPC2\_Mouse). The adducted lysine is indicated in red with \*.

