

Rigidity Guided Cell Attachment on Inkjet-Printed Patterns

Ying-Chih Liao^{1*}, Yun-Ting Ma¹, Chi-Hui Huang¹, Jiashing Yu¹, and Hao-Ming Hsiao²

¹ *Department of Chemical Engineering, National Taiwan University, Taipei, Taiwan*

² *Department of Mechanical Engineering, National Taiwan University, Taipei, Taiwan*

*#1 Sec. 4 Roosevelt Rd., Taipei, Taiwan, e-mail: liaoy@ntu.edu.tw

Contents

1. AFM data for roughness tests
2. Microscopic images of cell morphology on PLA films

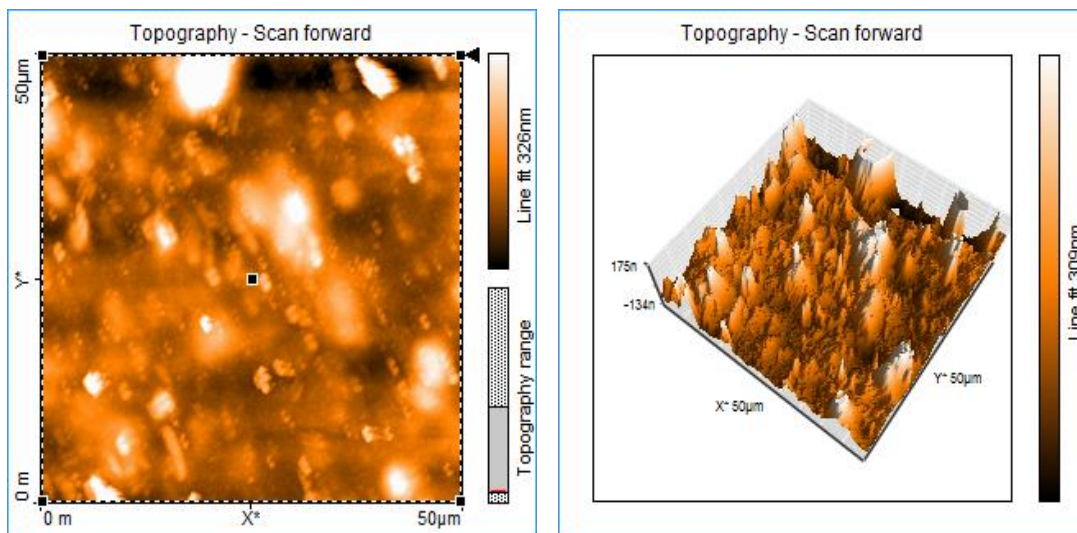


Figure S2 AFM data for one PLA layer on alginate films: color map (left) and 3D View (right).

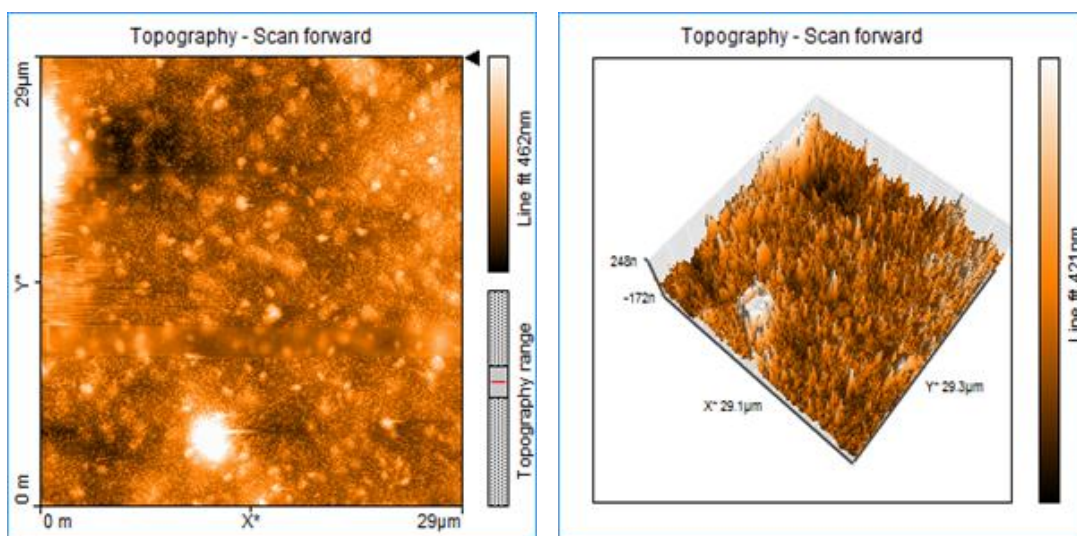


Figure S3 AFM data for two PLA layer on alginate films: color map (left) and 3D View (right).

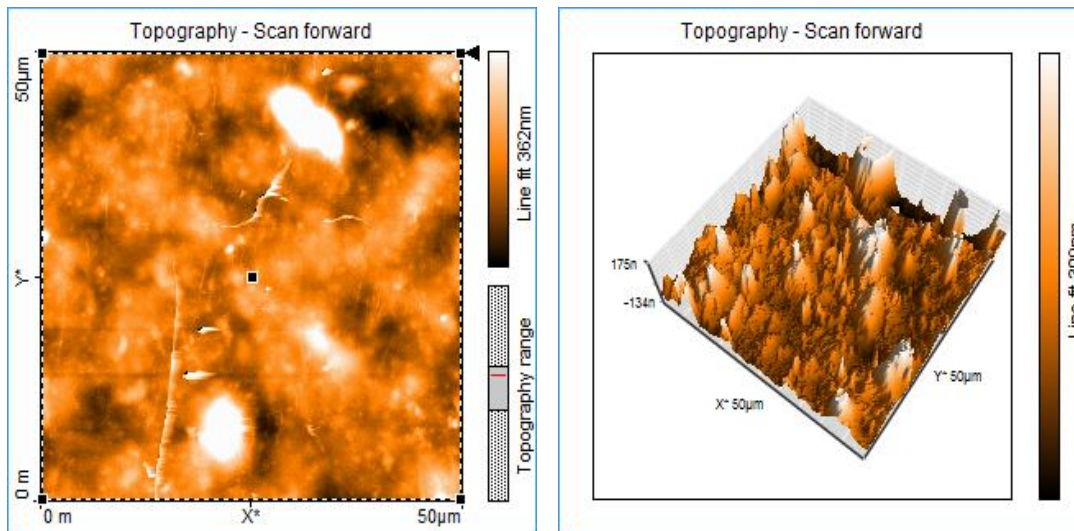


Figure S4 AFM data for three PLA layer on alginate films: color map (left) and 3D View (right).

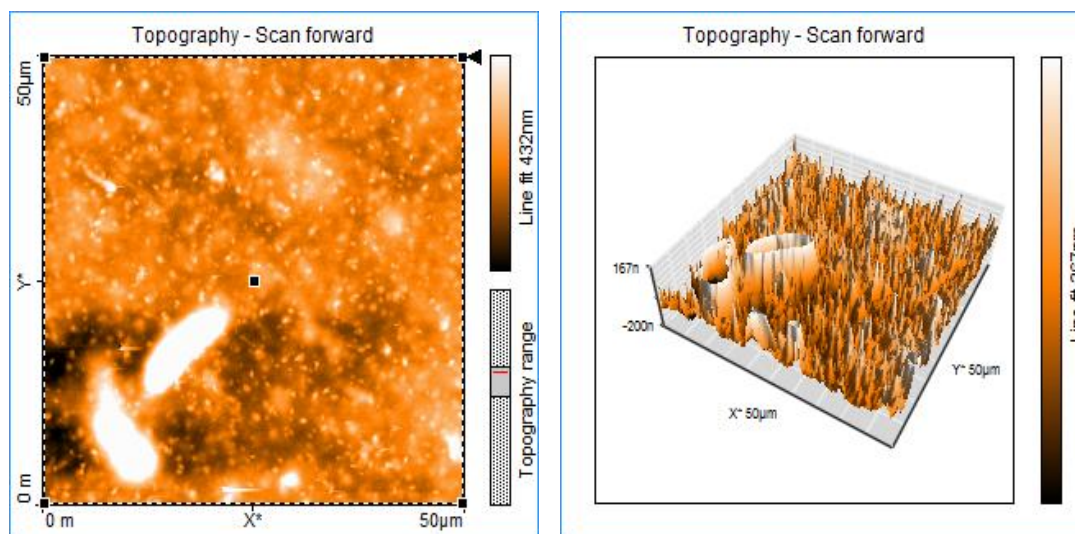


Figure S5 AFM data for four PLA layer on alginate films: color map (left) and 3D View (right).

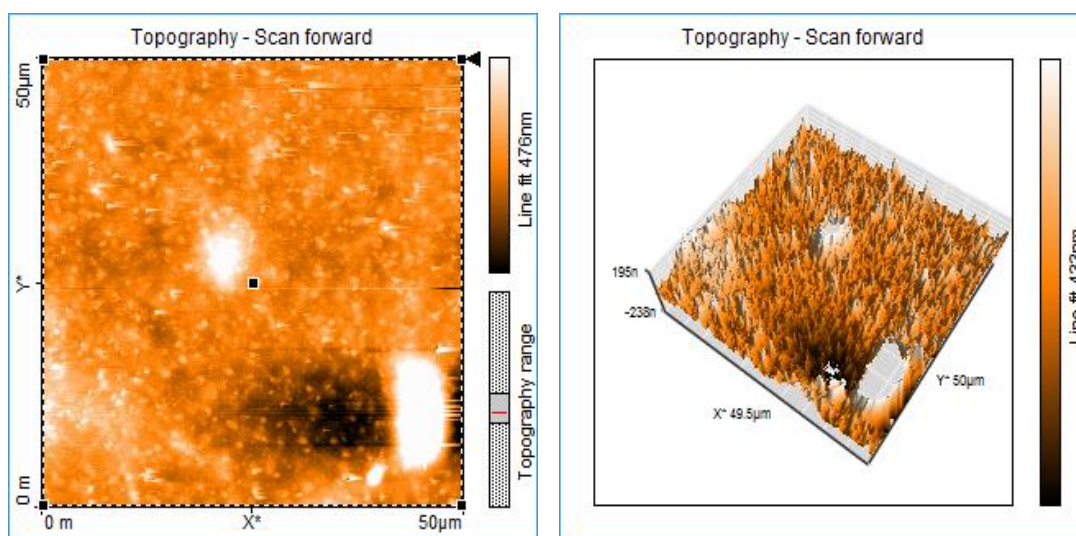


Figure S6 AFM data for five PLA layer on alginate films: color map (left) and 3D View (right).

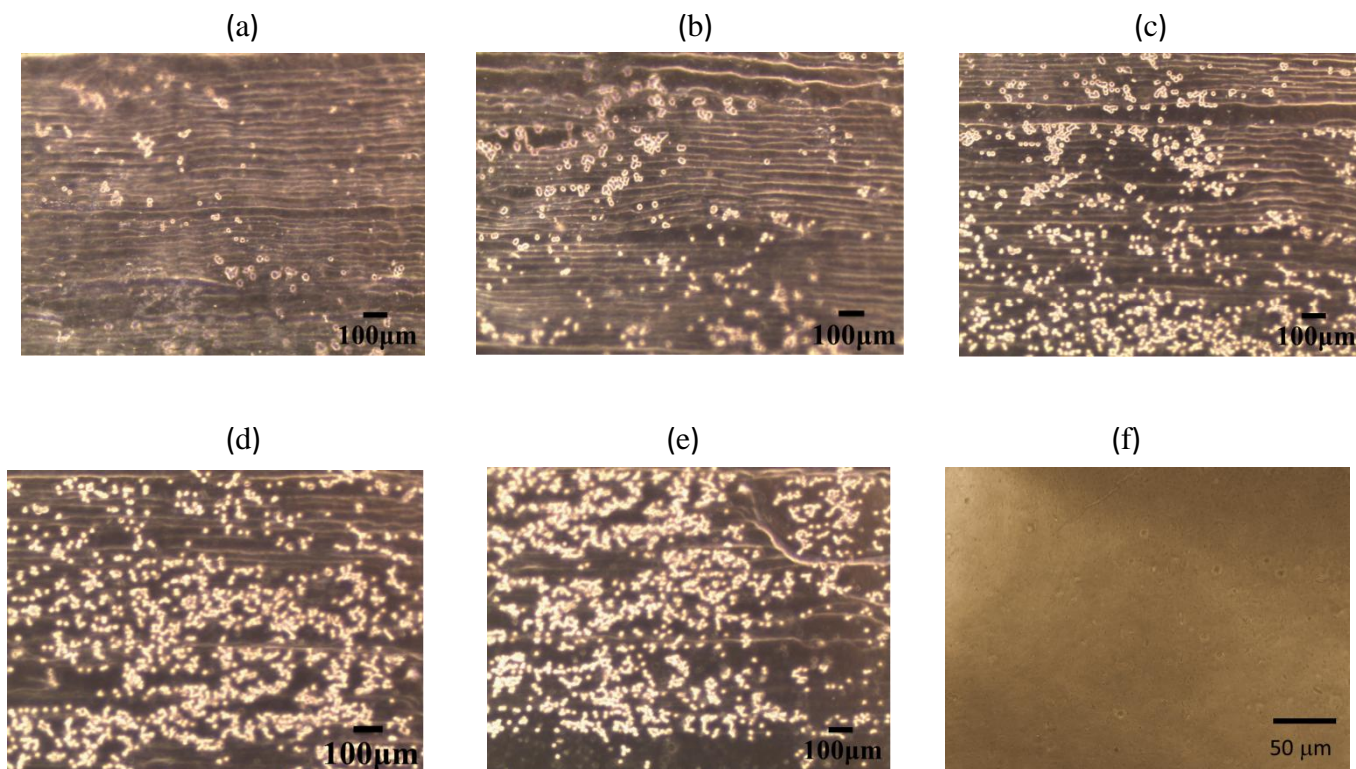


Figure S7 Microscopic images of cell morphology on: (a)-(e) PLA films of various thicknesses, 1-5 stacked layers respectively, and (f) bare alginate film.