

Supporting Info

One-step-process composite colloidal monolayers and further processing aiming at porous membranes

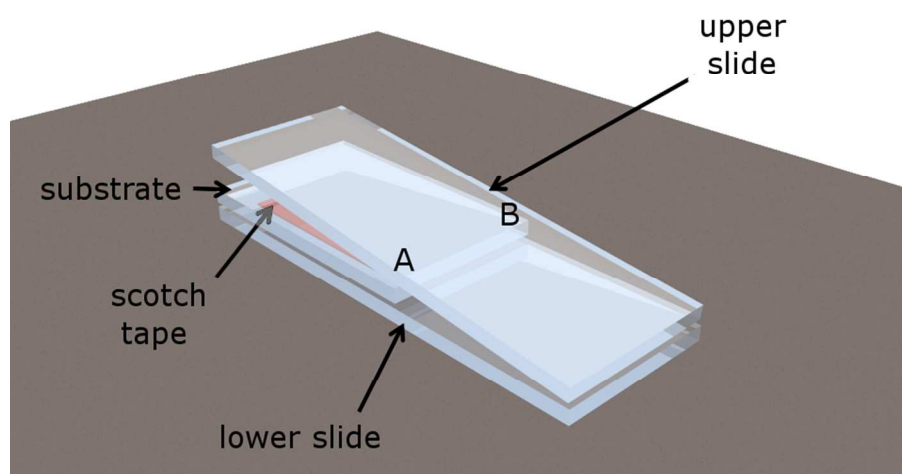
André Espinha, Marta Ibisate, Juan Galisteo-López, Álvaro Blanco, Cefe López*

Instituto de Ciencia de Materiales de Madrid (CSIC)

Sor Juana Inés de la Cruz, 3, 28049 Madrid, Spain.

*E-mail: ablanco@icmm.csic.es. Phone: +34-913349000 x. 014

2. EXPERIMENTAL SECTION



Schema 1. A schematic illustration of the wedge shaped cell used for the fabrication of the composite monolayers. Clamps are fixed in positions A and B in order to lock all the components in position. We note that the scotch tape is placed between the lower slide and the substrate.

3. RESULTS AND DISCUSSION

3.2 PS spheres in silica matrix by wedge-shaped cell and co-assembly

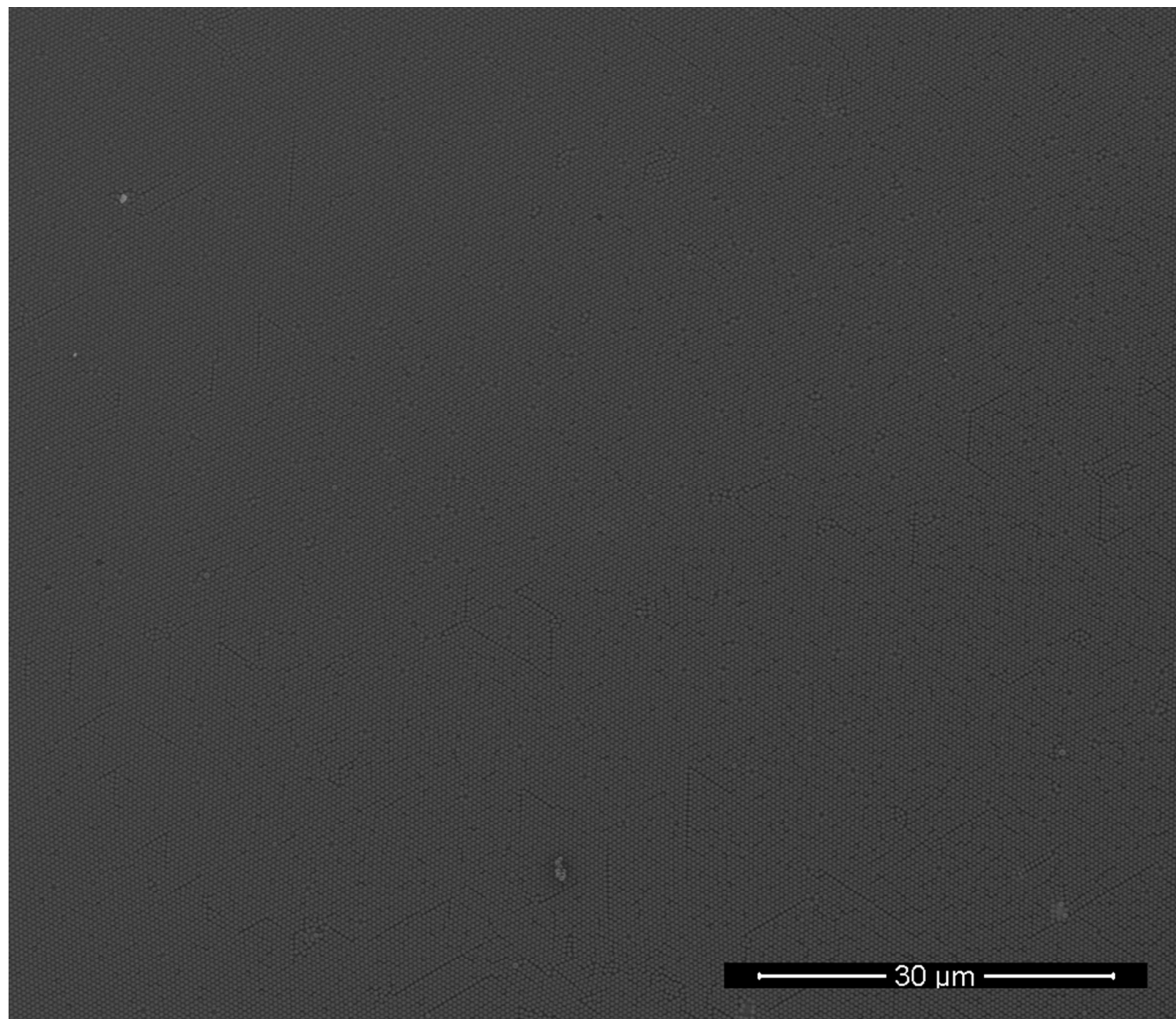


Figure S1. Entire SEM image of a sample fabricated with spheres of $\phi = 430$ nm and $[\text{TEOS}] = 1.0$ v%.

The area of the monodomain is at least $8500 \mu\text{m}^2$.