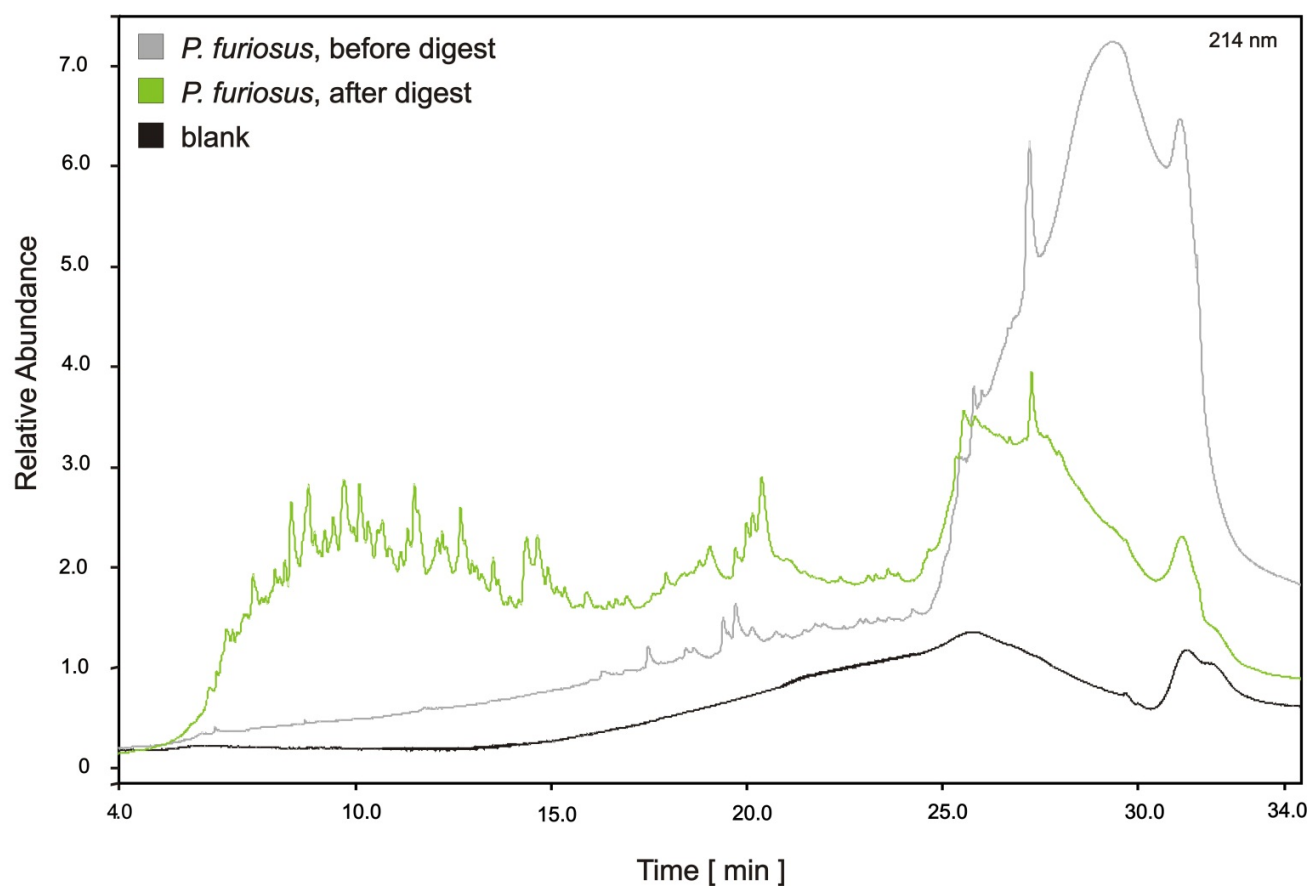
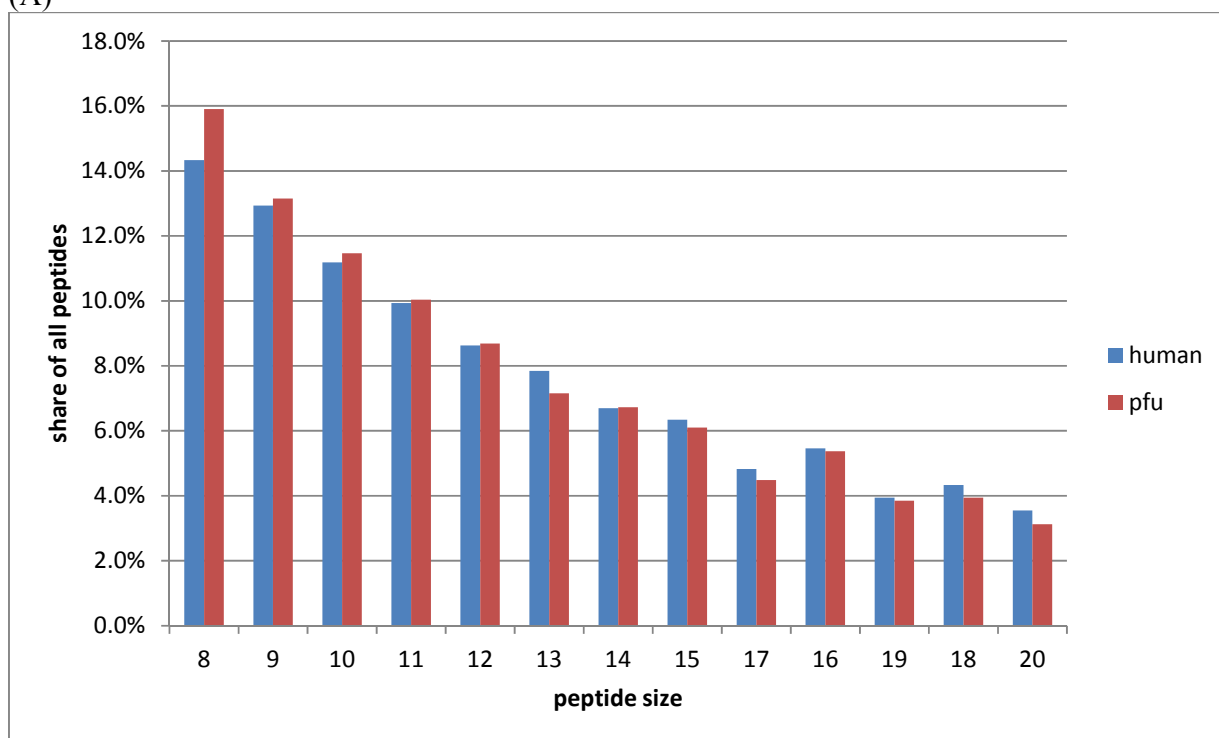


SUPPLEMENTARY FIGURE CAPTIONS

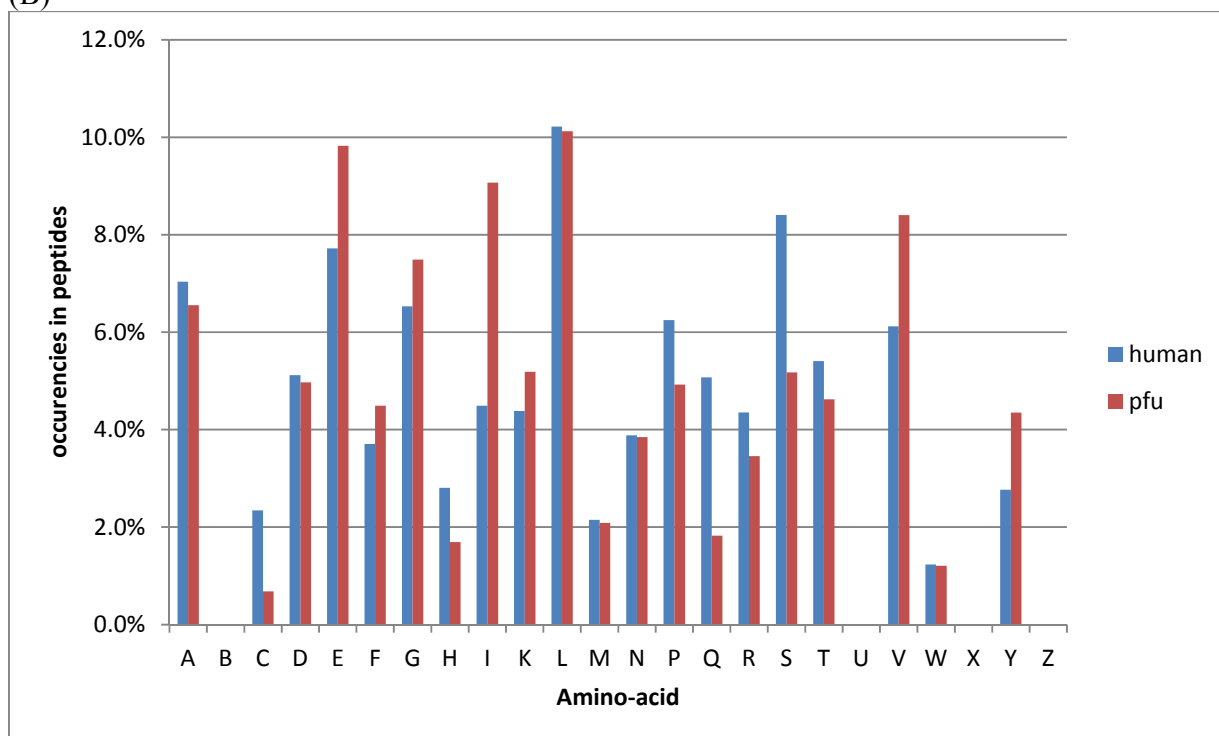


Supplementary Figure 1. Digestion control of the *Pyrococcus furiosus* proteomic standard using monolithic separation. Although *Pyrococcus furiosus* is supposedly refractory to tryptic digest⁹, following the manufacturer's protocol, it was possible to obtain approximately 80% digestion efficiency according to monolithic separation³⁰. Even though some proteins remained undigested, the amount of obtained peptides was sufficient to apply the method (see text).

(A)



(B)



Supplementary Figure 2. (A) Observable tryptic peptides from the *Pyrococcus furiosus* (Pfu) UniProtKB sequences present the same size distribution as the *Homo sapiens* (human) peptides. (B) The Pfu and human distributions of amino-acids in these peptides are also very similar, hinting at similar LC/MS results. Actually, when taking human as reference, only five amino-acids show a difference in abundance of more than two percent point: Glutamic Acid (+2.1 percent points), Isoleucine (+4.6 percent points), Glutamine (-3.2 percent points), Serine (-3.2 percent points) and Valine (+2.3 percent points).