

Figure S1

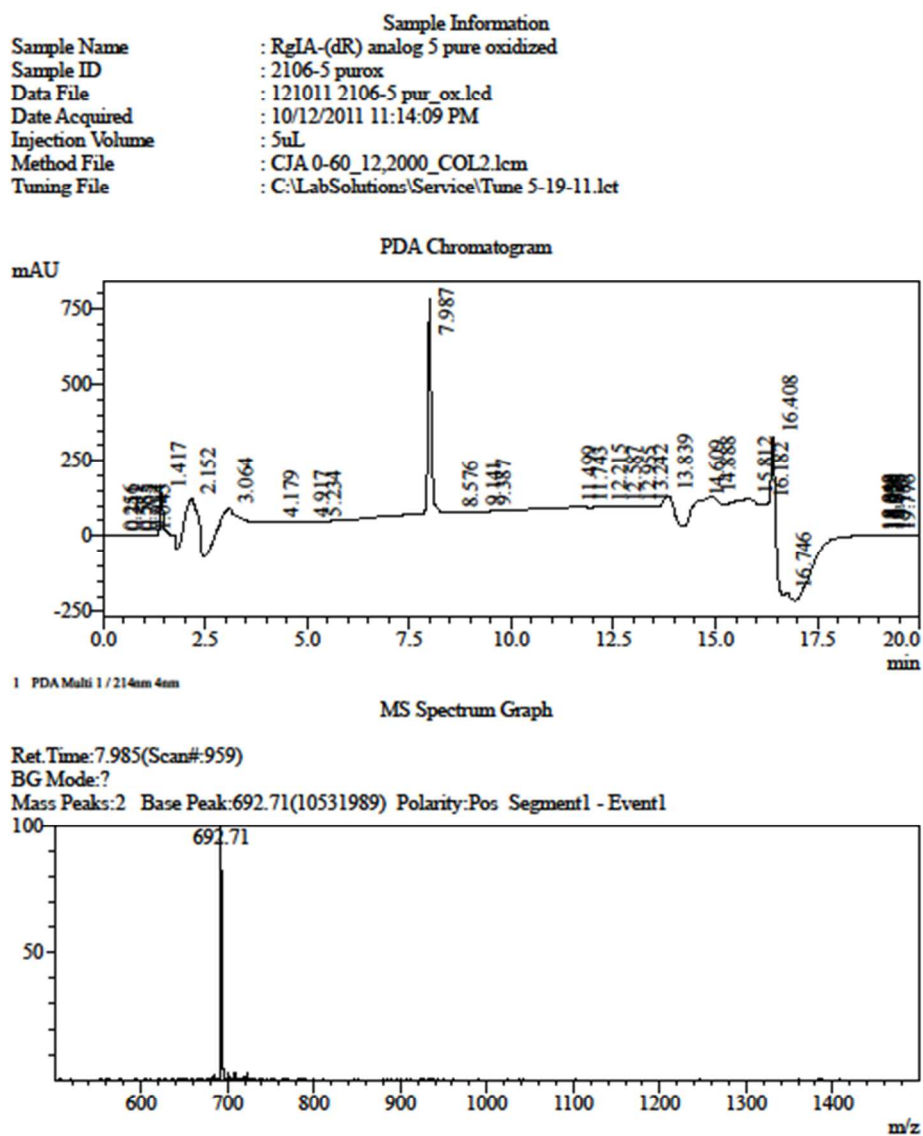


Figure S1. Analytical LC-MS data for compound **5**. (top) UV analytical HPLC trace detected at 214 nm. The final mass was calculated from the observed $[M+2H]/2$ peak. Observed, 1383.40; calculated 1383.40

Figure S2

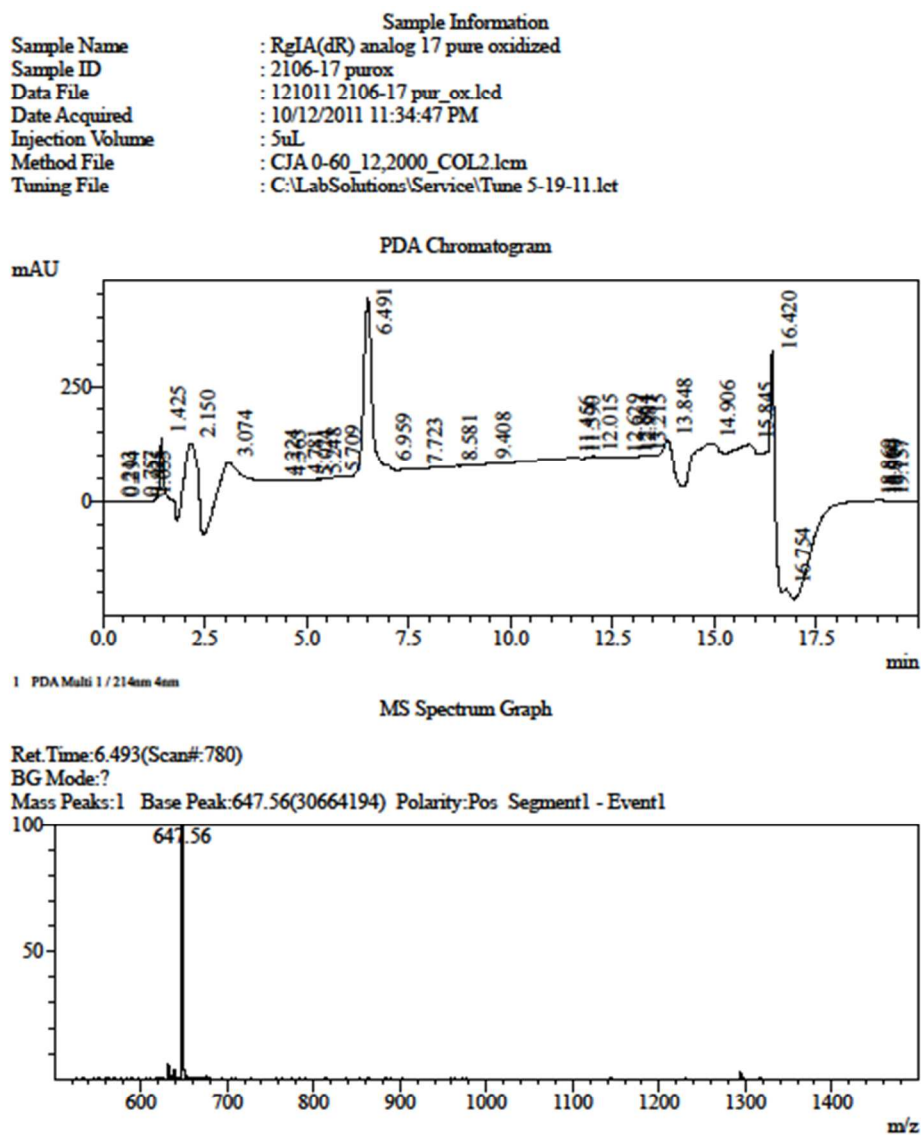


Figure S2. Analytical LC-MS data for compound **17**. (top) UV analytical HPLC trace detected at 214 nm. The final mass was calculated from the observed $[M+2H]/2$ peak. Observed, 1293.10; calculated 1293.45.

Figure S3

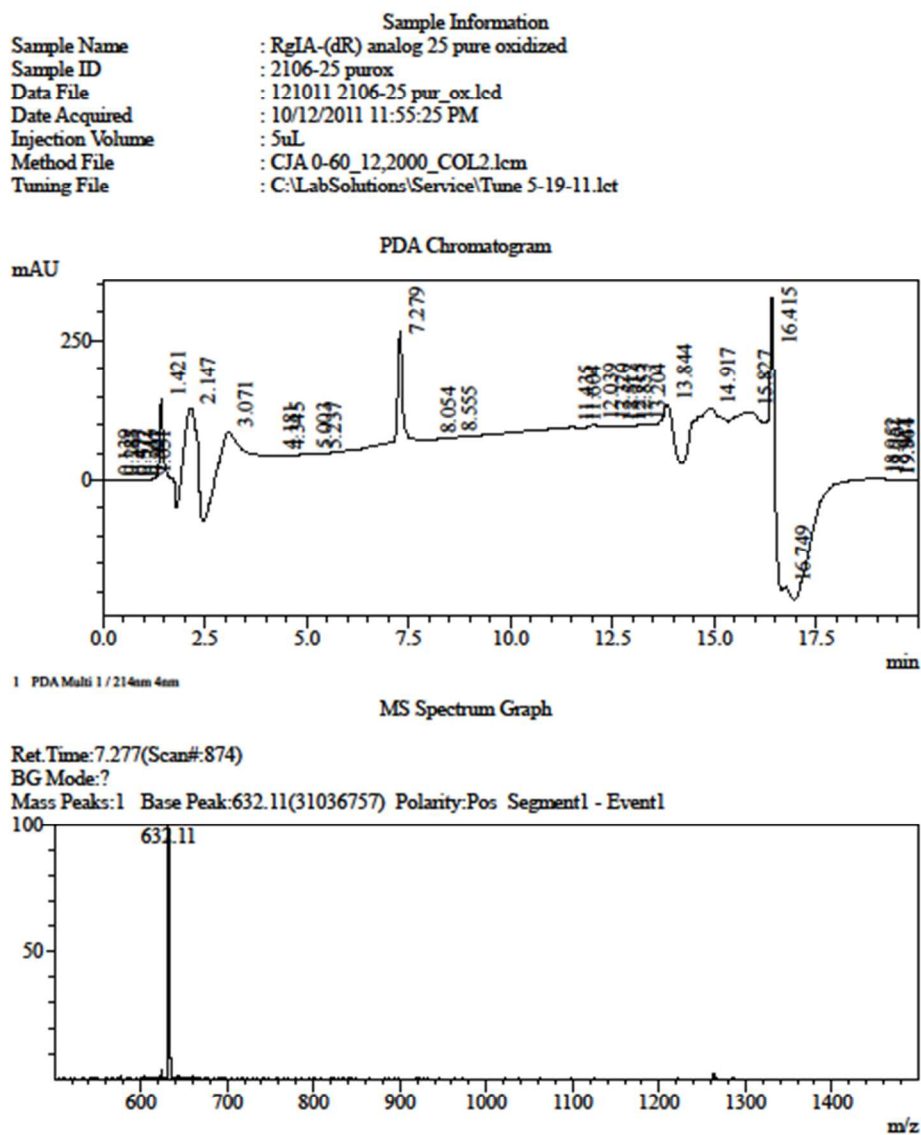


Figure S3. Analytical LC-MS data for compound **25**. (top) UV analytical HPLC trace detected at 214 nm; (bottom) ESI mass spectra. The final mass was calculated from the observed $[M+2H]/2$ peak. Observed, 1262.50; calculated 1262.20

Figure S4

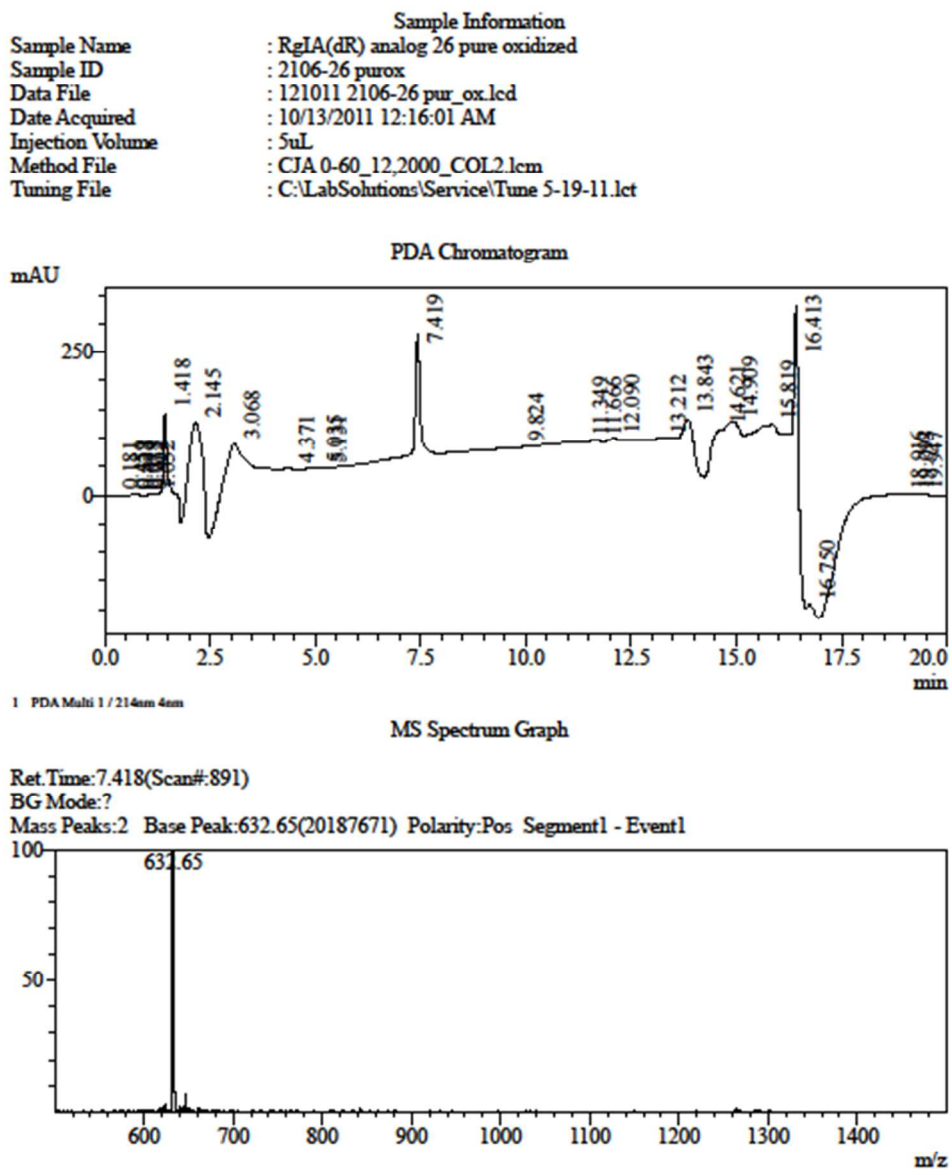


Figure S4. Analytical LC-MS data for compound **26**. (top) UV analytical HPLC trace detected at 214 nm; (bottom) ESI mass spectra. The final mass was calculated from the observed $[M+2H]/2$ peak. Observed, 1262.50; calculated 1262.20

Figure S5

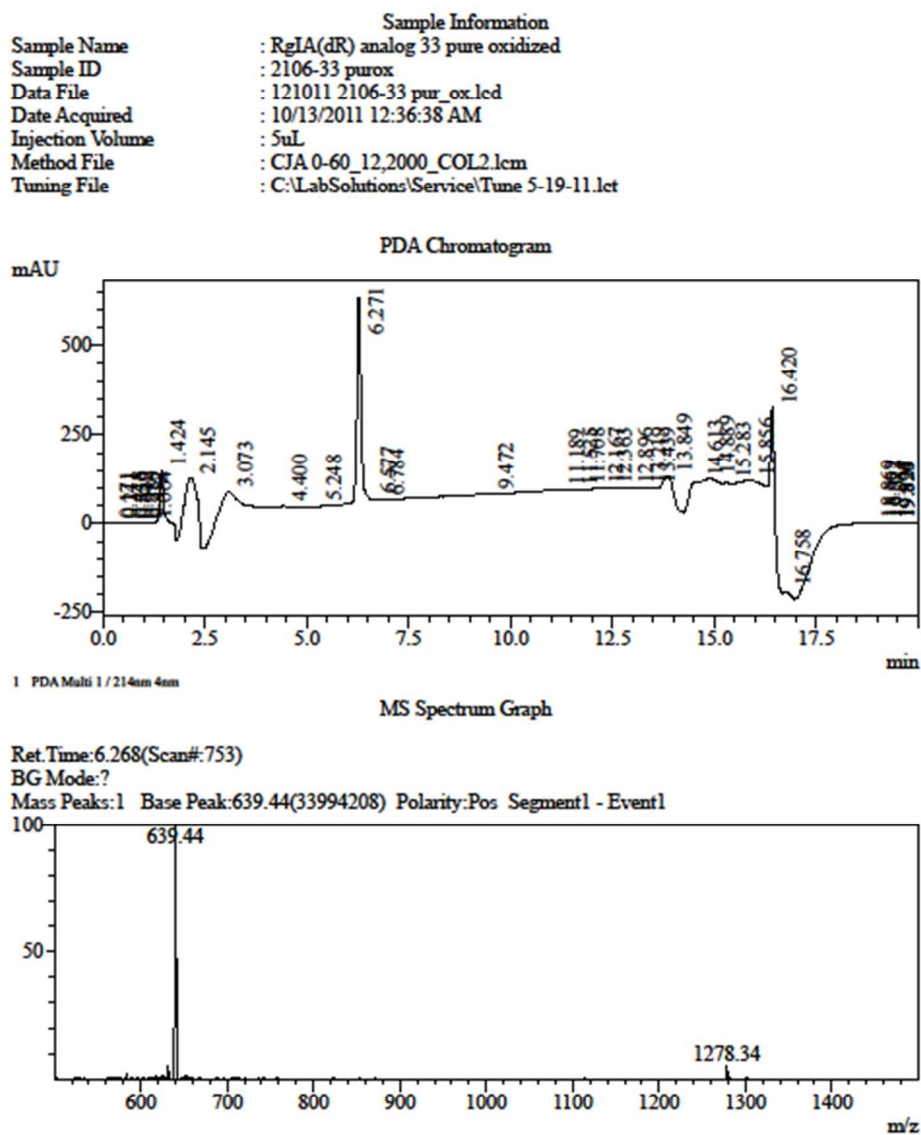


Figure S5. Analytical LC-MS data for compound **33**. (top) UV analytical HPLC trace detected at 214 nm; (bottom) ESI mass spectra. The final mass was calculated from the observed $[M+2H]/2$ peak. Found, 1277.48; calculated 1277.48

Figure S6

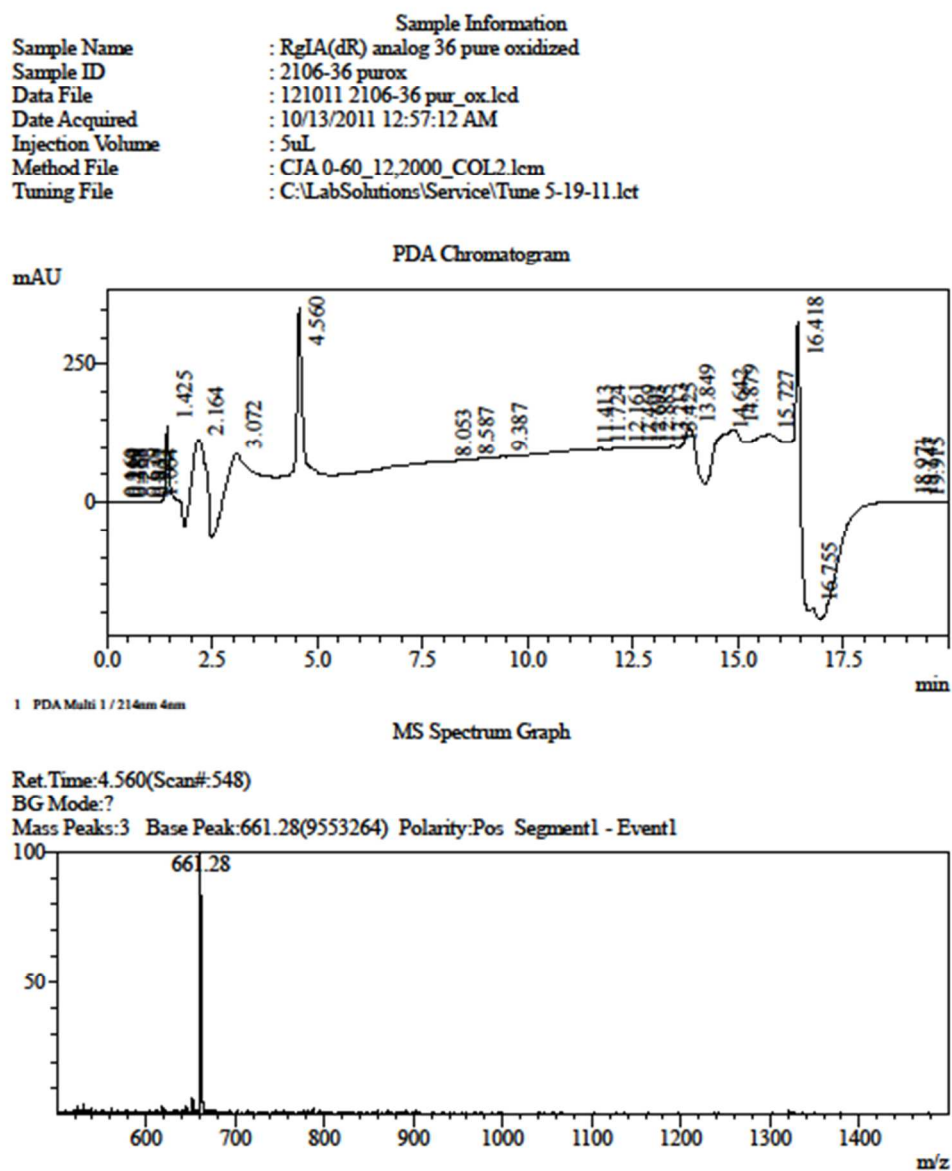


Figure S6. Analytical LC-MS data for compound **36**. (top) UV analytical HPLC trace detected at 214 nm; (bottom) ESI mass spectra. The final mass was calculated from the observed $[M+2H]/2$ peak. Found, 1320.54; calculated 1320.49