

Supporting Information

Copolythiophene-derived Colorimetric and Fluorometric Sensor for Lysophosphatidic Acid Based on the Multipoint Interactions

Minhuan Lan,^{§†} Weimin Liu,^{*†} Ying Wang,[†] Jiechao Ge,[†] Jiasheng Wu,[†] Hongyan Zhang,[†] Jianhong Chen,^{§†} Wenjun Zhang,[‡] and Pengfei Wang^{*†}

[†]Key Laboratory of Photochemical Conversion and Optoelectronic Materials,
Technical Institute of Physics and Chemistry, Chinese Academy of Sciences, Beijing,
100190, People's Republic of China

[‡]Center of Super-Diamond and Advanced Films (COSDAF) and Department of
Physics and Materials Science, City University of Hong Kong, Hong Kong SAR (P.R.
China)

[§]Graduate School of the Chinese Academy of Sciences, Beijing, 100049, China

^{*}Corresponding author. Tel: +86-10-82543435, Fax: +86-10-82543435, Email:
wangpf@mail.ipc.ac.cn (Pengfei Wang) or wmliu@mail.ipc.ac.cn (Weimin Liu)

Contents

1. Figure S1-S9. The ¹H NMR spectra, ¹³C NMR spectra and MS spectra of compounds.
2. Figure S10. The ¹H NMR spectra of CPT9 in the presence of LPA.

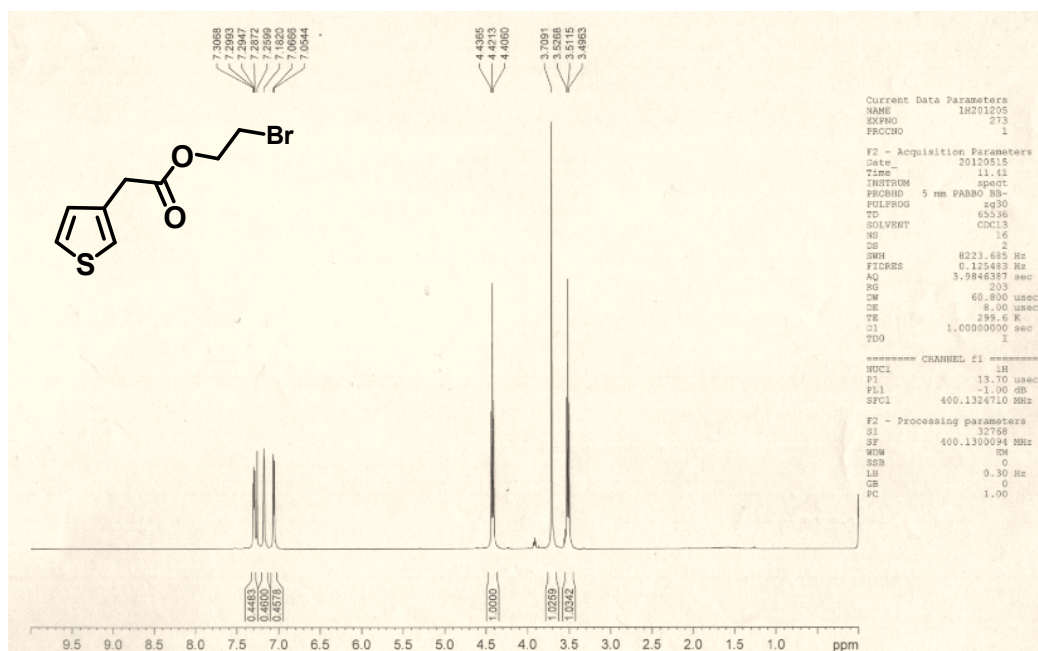


Figure S1. ¹H NMR (400 MHz) spectrum of compound **3** in CDCl₃.

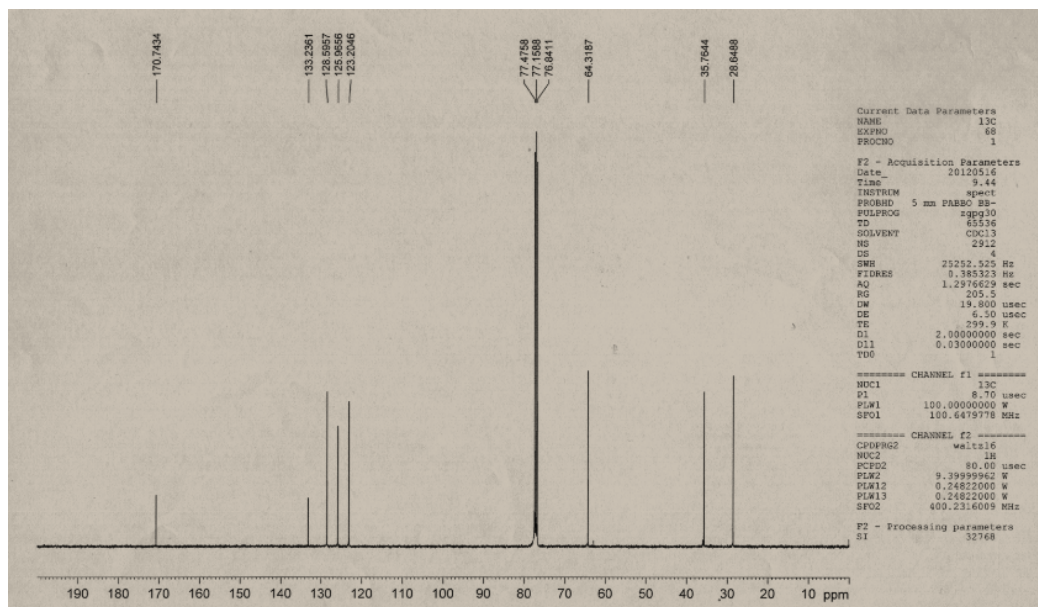


Figure S2. ¹³C NMR (100 MHz) spectrum of compound **3** in CDCl₃.

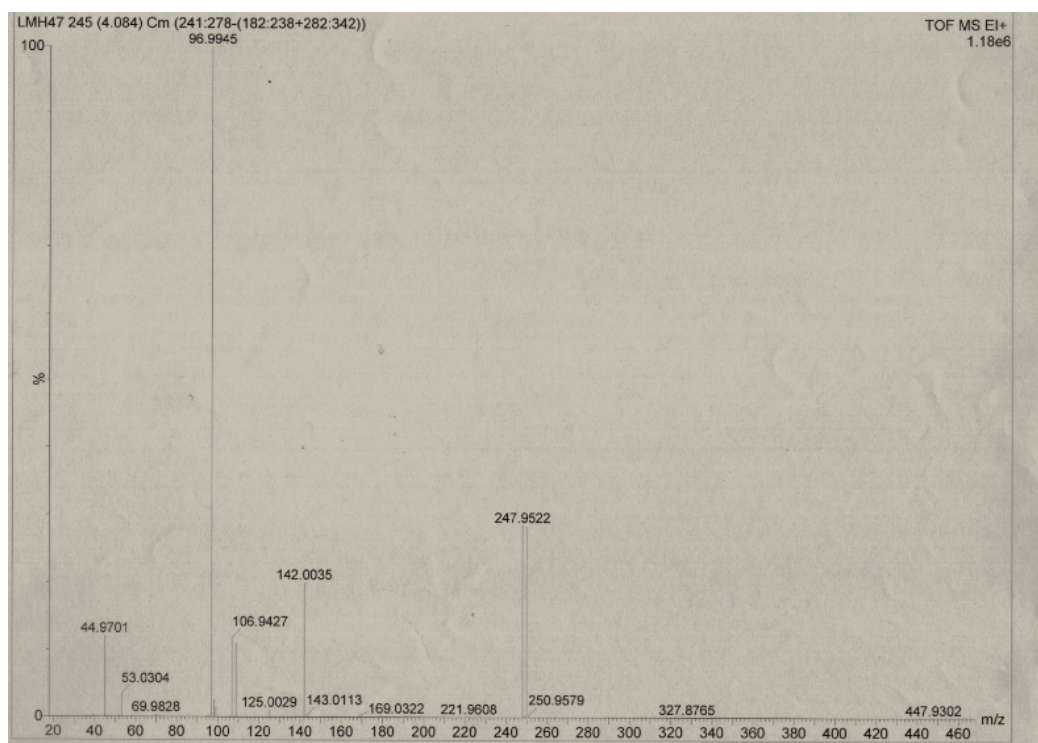


Figure S3. EI-MS spectrum of compound **3**.

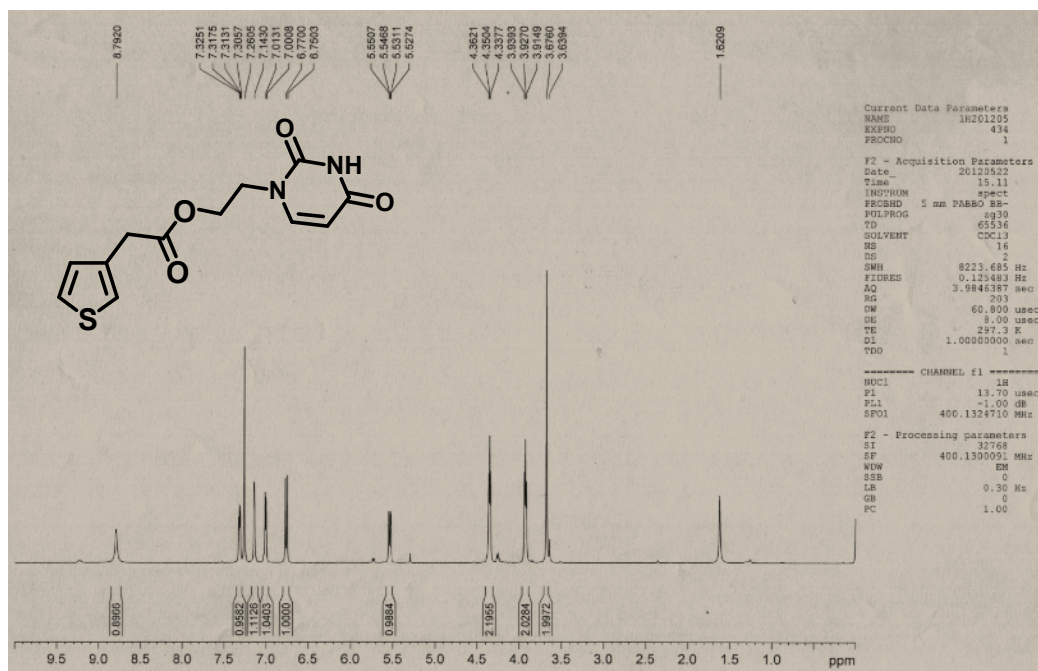


Figure S4. ^1H NMR (400 MHz) spectrum of compound **4** in CDCl_3 .

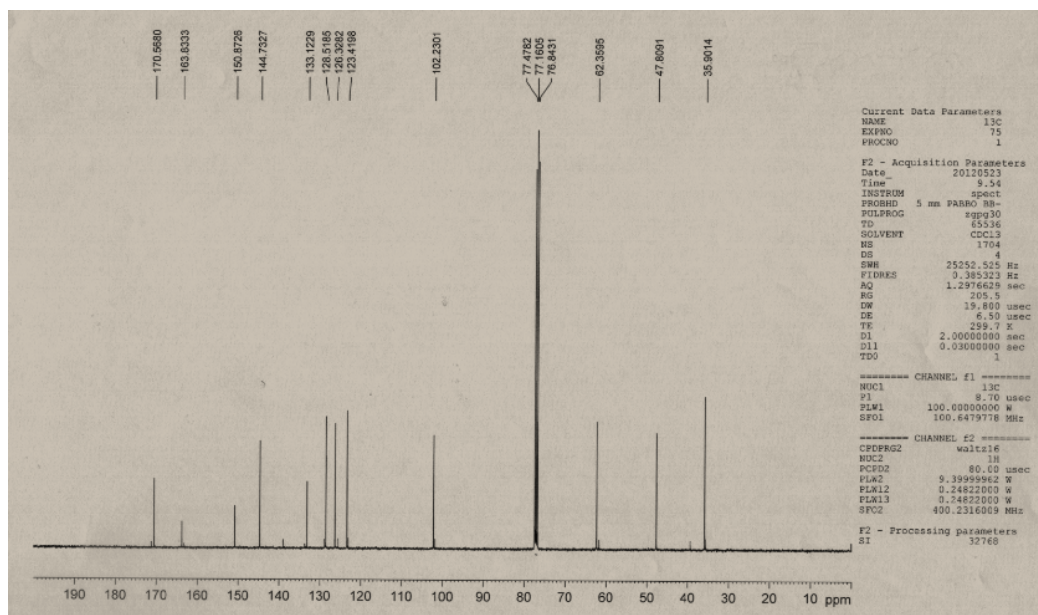


Figure S5. ^{13}C NMR (100 MHz) spectrum of compound **4** in CDCl_3 .

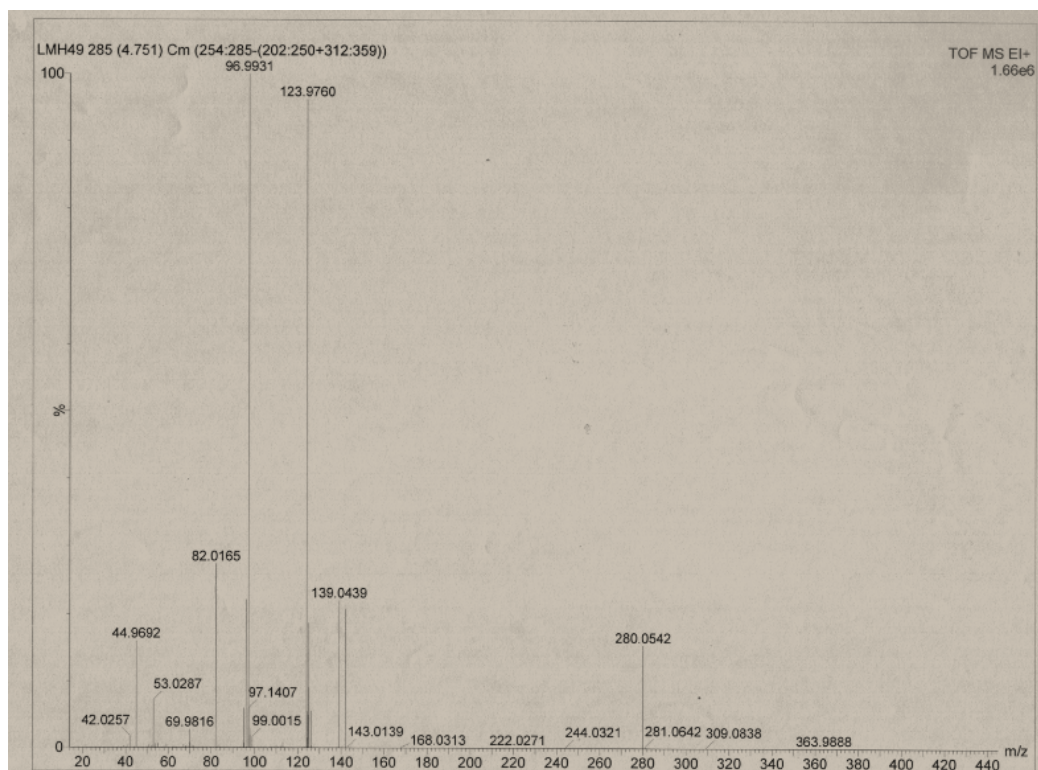


Figure S6. EI-MS spectrum of compound **4**.

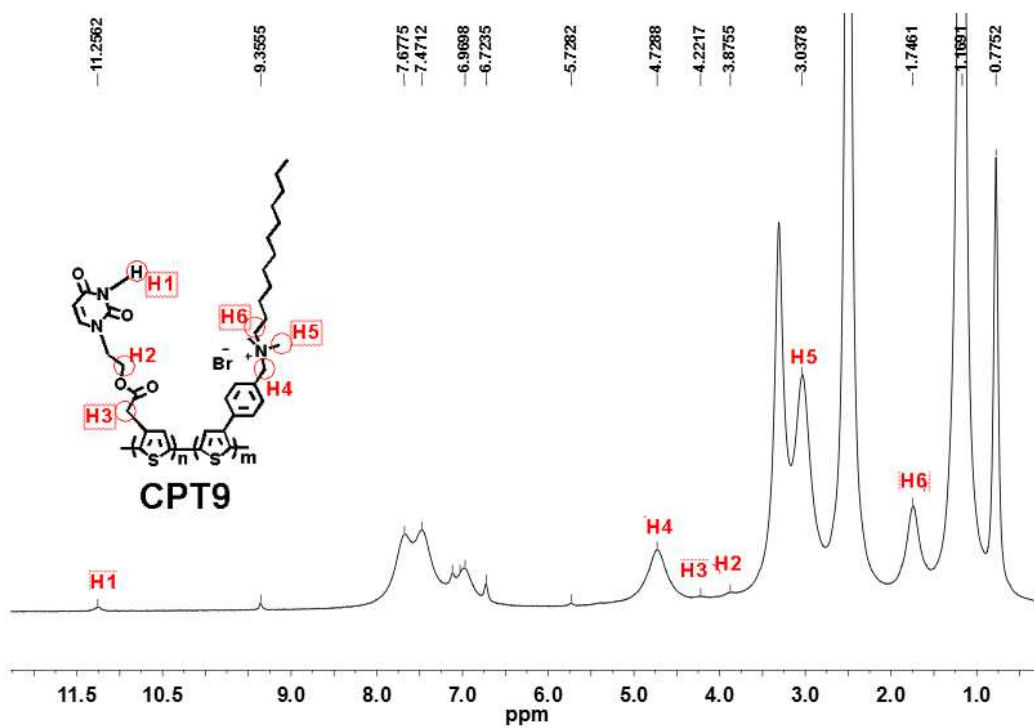


Figure S7. ^1H NMR (400 MHz) spectrum of compound **CPT9** in DMSO.

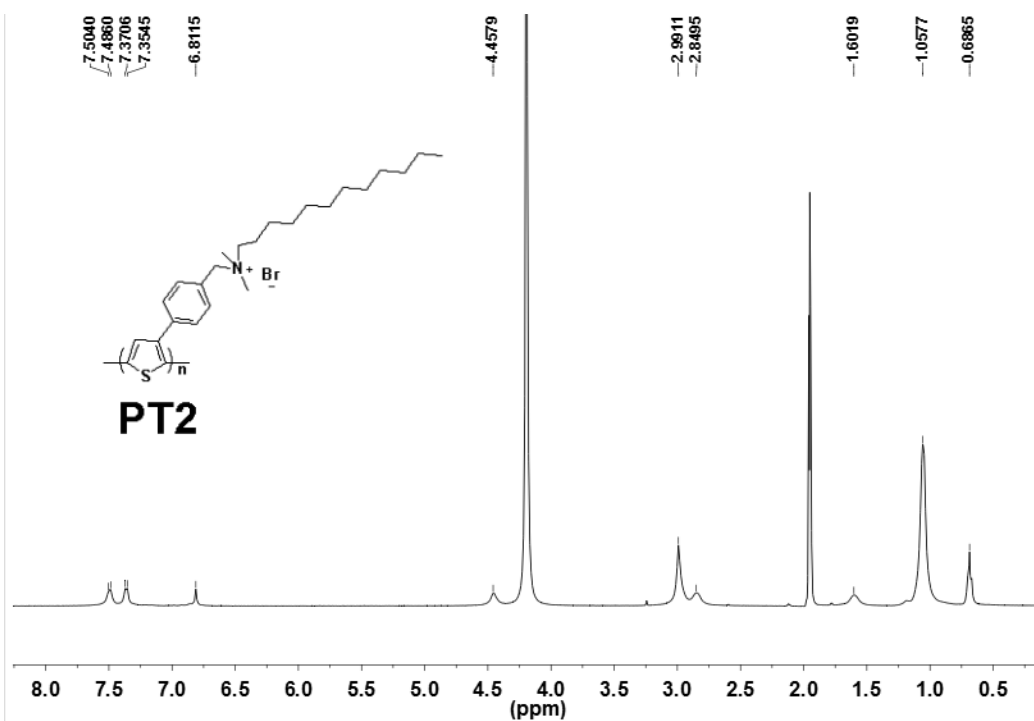


Figure S8. ^1H NMR (400 MHz) spectrum of compound **PT2** in $\text{CH}_3\text{CN}-\text{D}_2\text{O}$ ($v/v=1/1$).

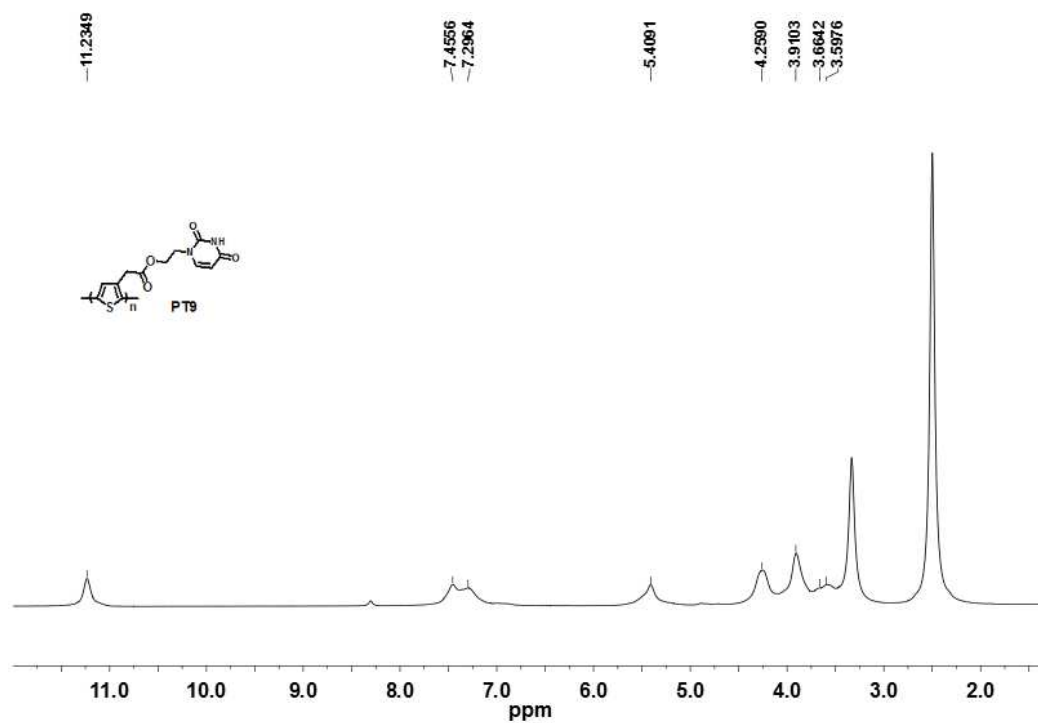


Figure S9. ¹H NMR (400 MHz) spectrum of compound **PT9** in DMSO.

3. ¹H NMR titrations of CPT9 with LPA.

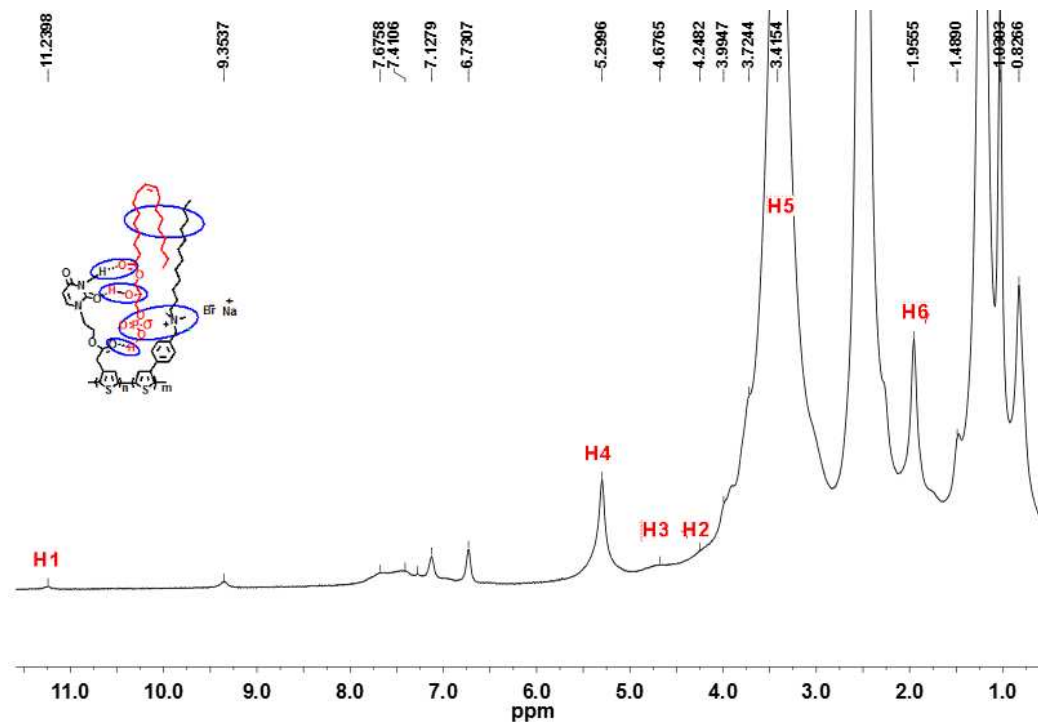


Figure S10. ¹H NMR (400 MHz) spectrum of compound **CPT9** in the presence of LPA in DMSO.