

Supporting Information

Characterization and suitability of therapeutic antibody dense phases for subcutaneous delivery

Harvey R. Johnson and Abraham M. Lenhoff

Center for Molecular and Engineering Thermodynamics,
Department of Chemical and Biomolecular Engineering,
University of Delaware,
Newark, Delaware 19716, USA

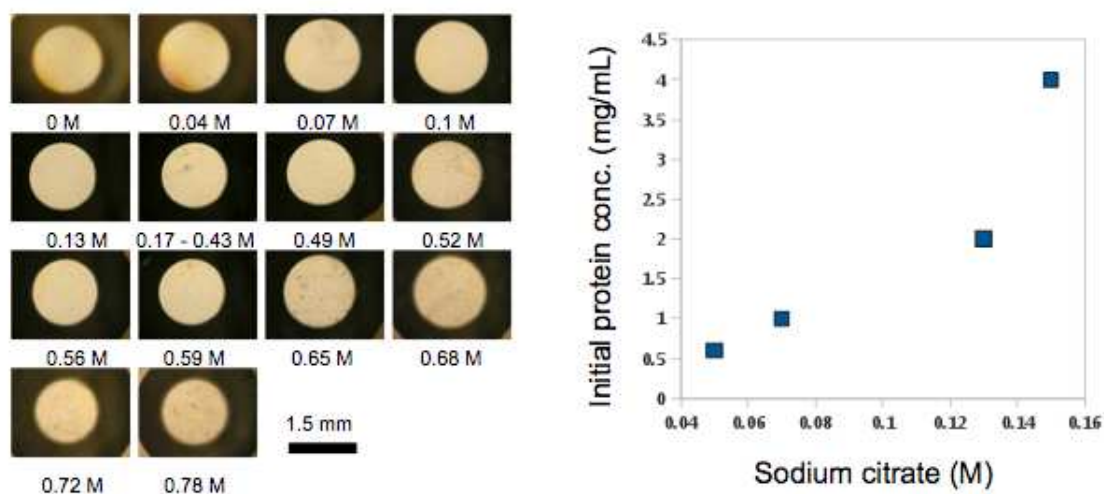


Figure S1. Salting-in and salting-out of mAb B. a) Optical micrographs of phase behavior (1 mg/mL mAb B, pH 5) with various concentrations of sodium citrate. b) Phase diagram for salting-in region as a function of sodium citrate concentration and initial protein concentration; dense phase appears in top left part of diagram.

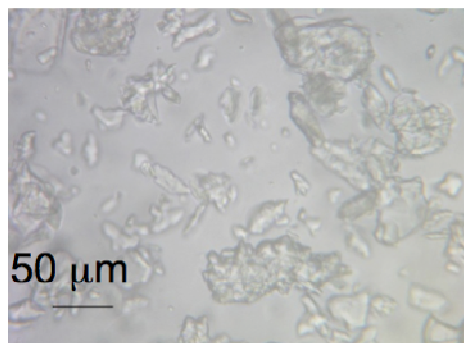


Figure S2. Pulverized sample of crystals of mAb A after pipetting (9% PEG₃₃₅₀, 50 mM sodium citrate, pH 5).