

Supplementary Information

AnilinoMethylRhodamines: pH Sensitive Probes with Tunable Photophysical Properties by Substituent Effect

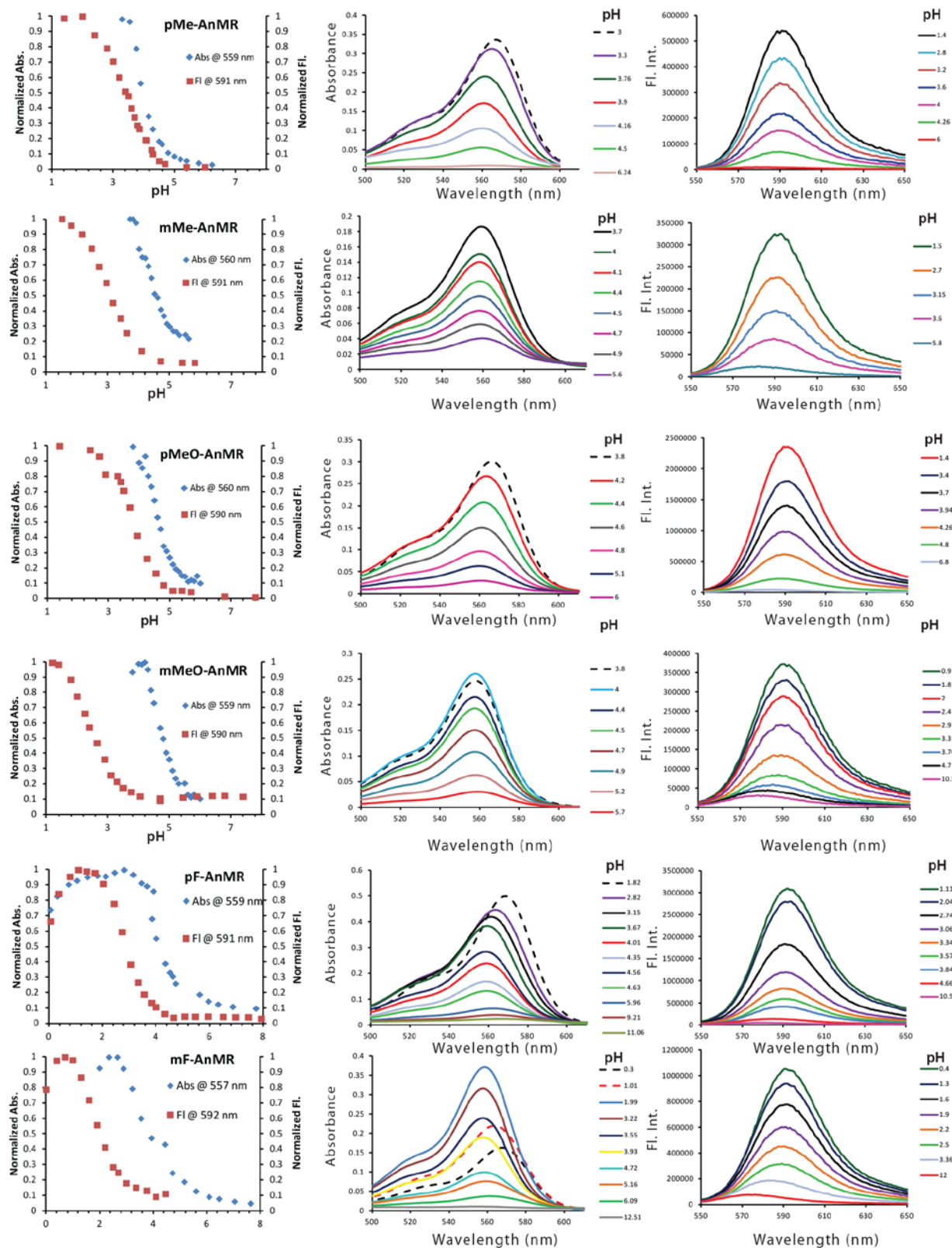
*Quinn A. Best, Chuangjun Liu, Paul D. VanHoven, Matthew E. McCarroll,
and Colleen N. Scott**

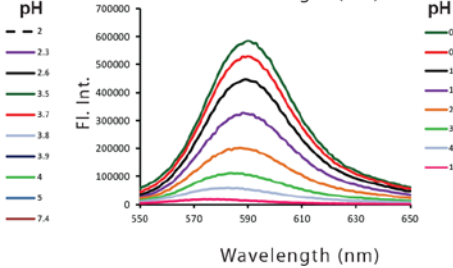
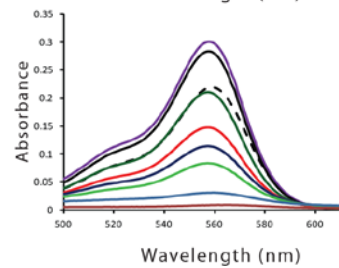
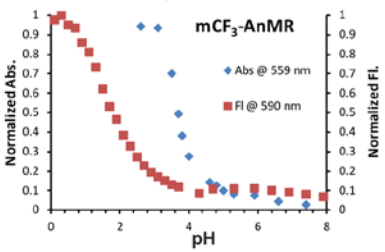
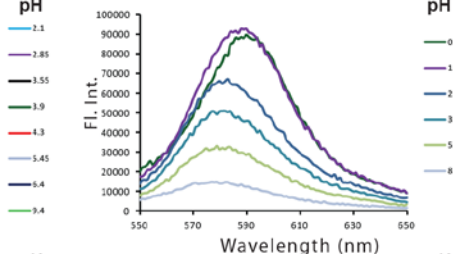
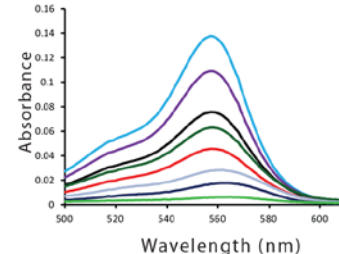
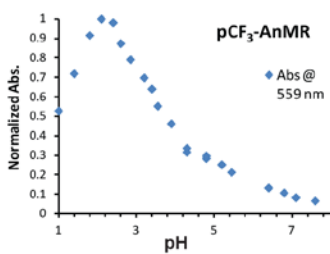
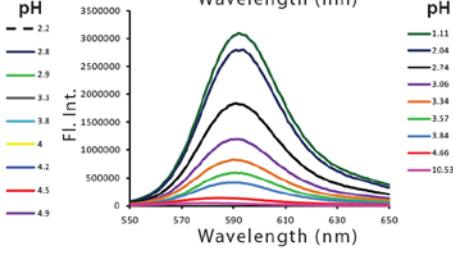
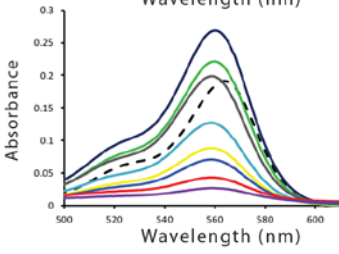
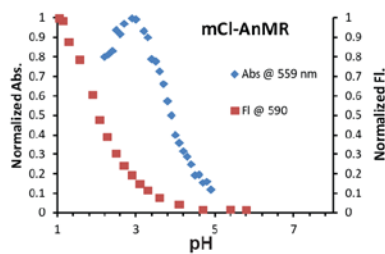
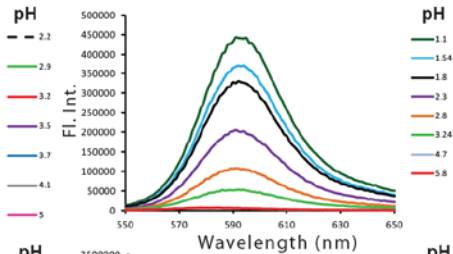
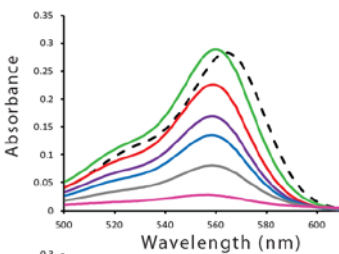
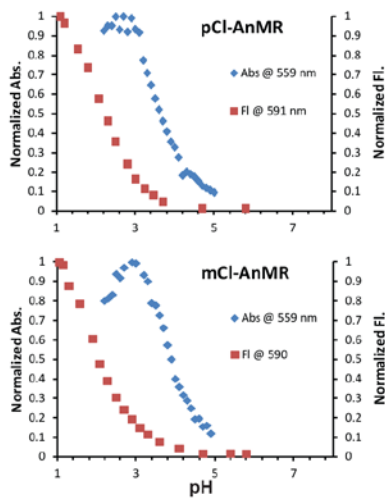
Department of Chemistry & Biochemistry, Southern Illinois University, Carbondale, IL
62901-4409, USA

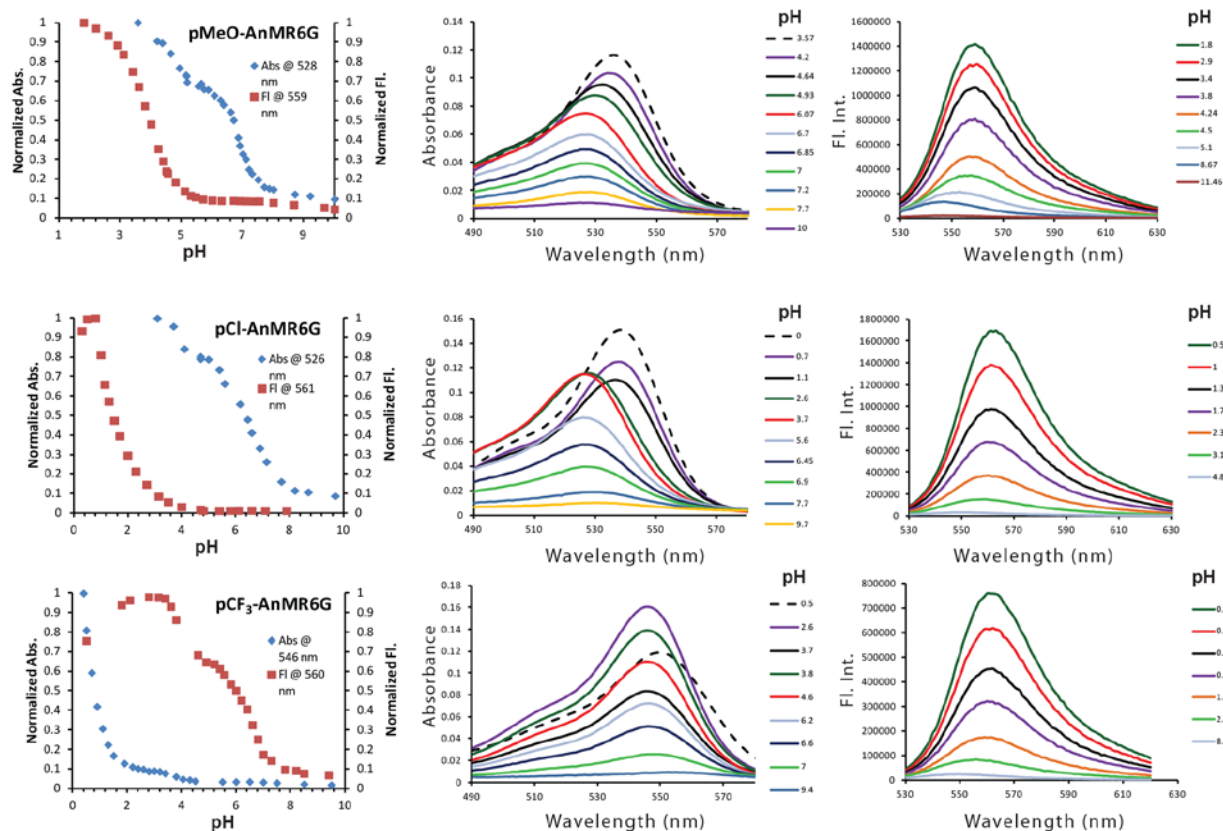
Table of Content:

pH Titration.....	S2
Structures of the various AnMR and AnMR6G analogs.....	S4
Quantum yield studies.....	S5
NMR Experiment for AMR.....	S6
NMR Spectra of Compounds.....	S7

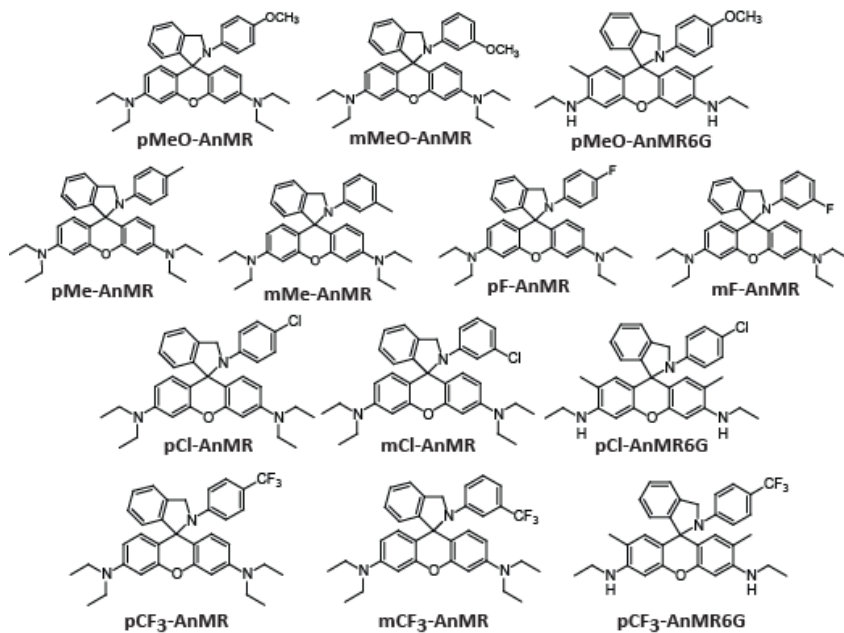
pH Titration Spectra



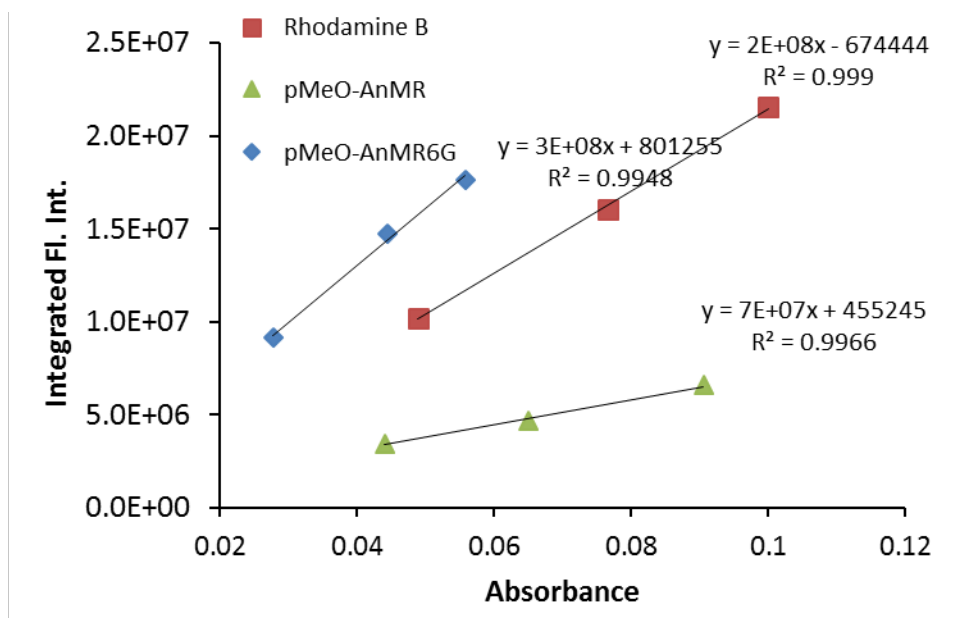




Structures of the various AnMR and AnMR6G analogs.



Quantum yield studies: pMeO-AnMR and pMeO-AnMR6G were tested using rhodamine B as the standard. Each compound was prepared at 0.5, 0.75, & 1.0 μM concentration with the AnMR compounds in water (pH 1.5) and rhodamine B in ethanol. The quantum yield of rhodamine B in ethanol is 0.49. The quantum yields found for pMeO-AnMR and pMeO-AnMR6G are 0.14 and 0.65 respectively.



NMR Experiment for AMR

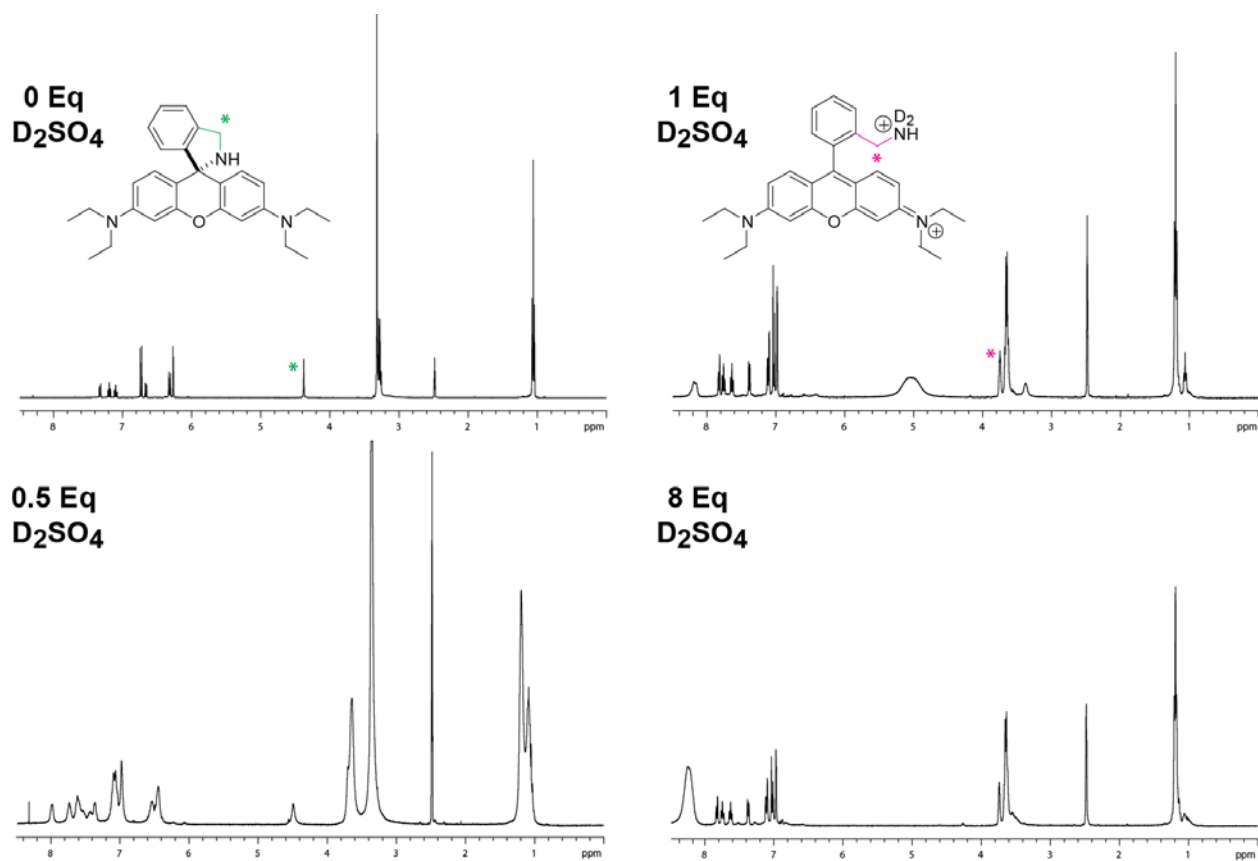
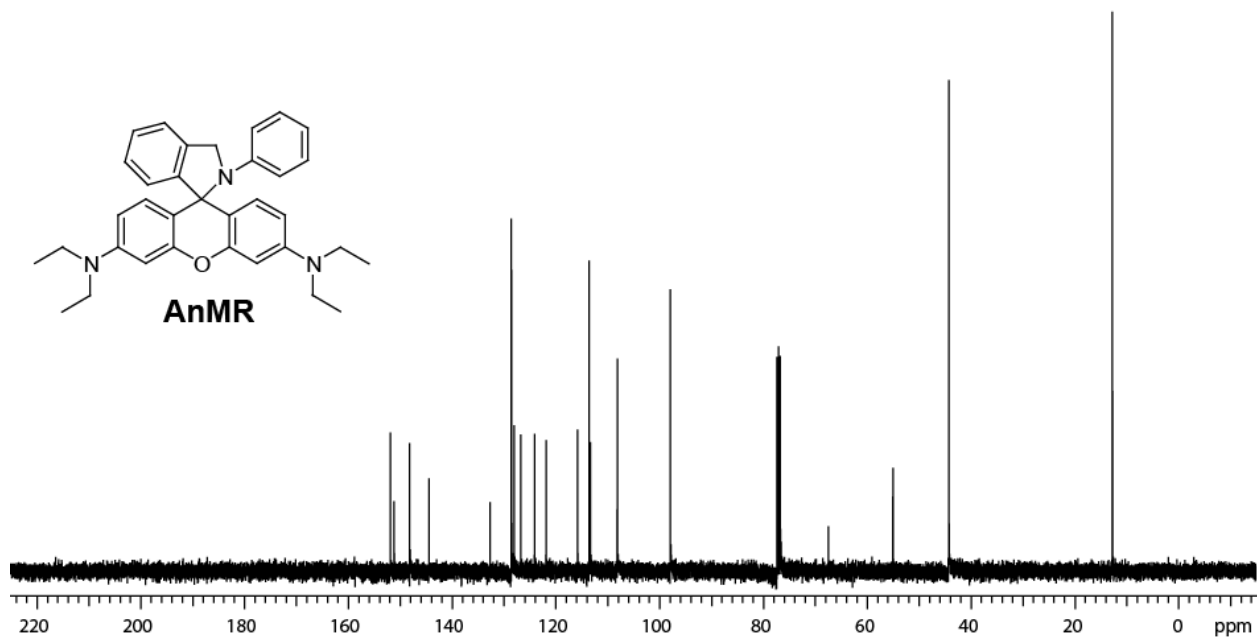
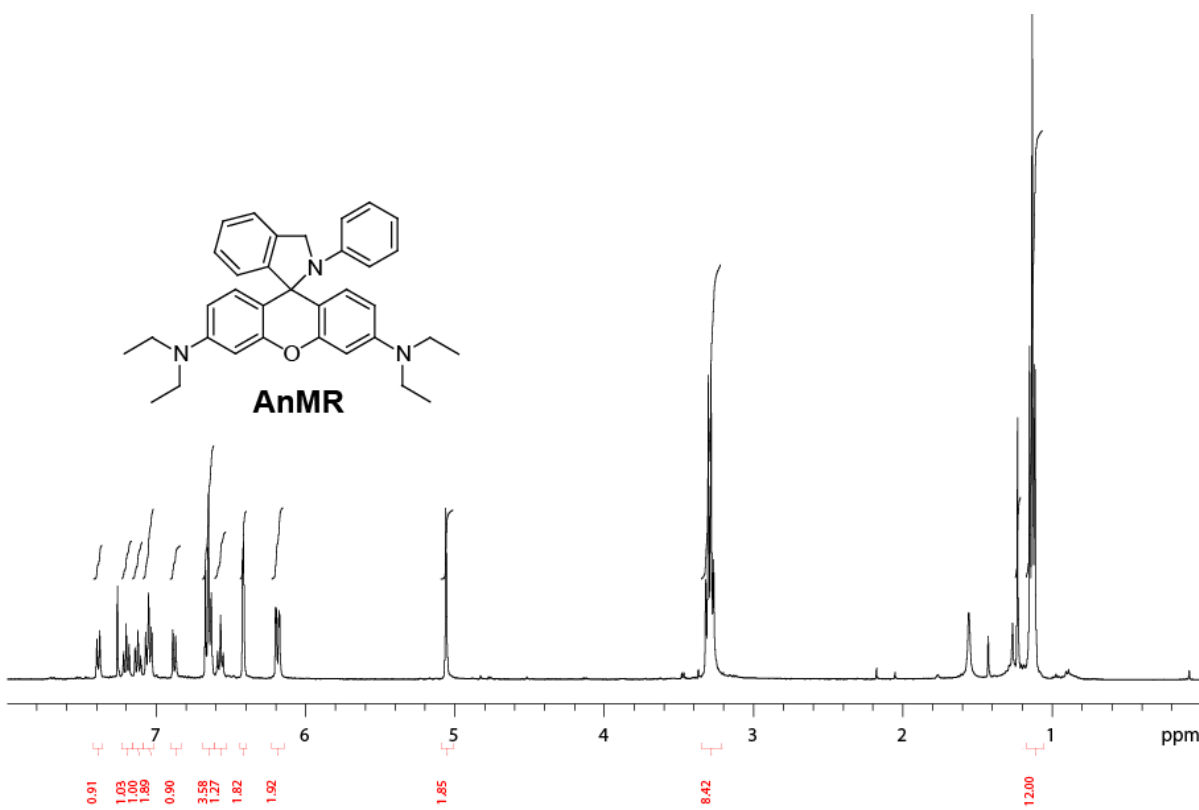
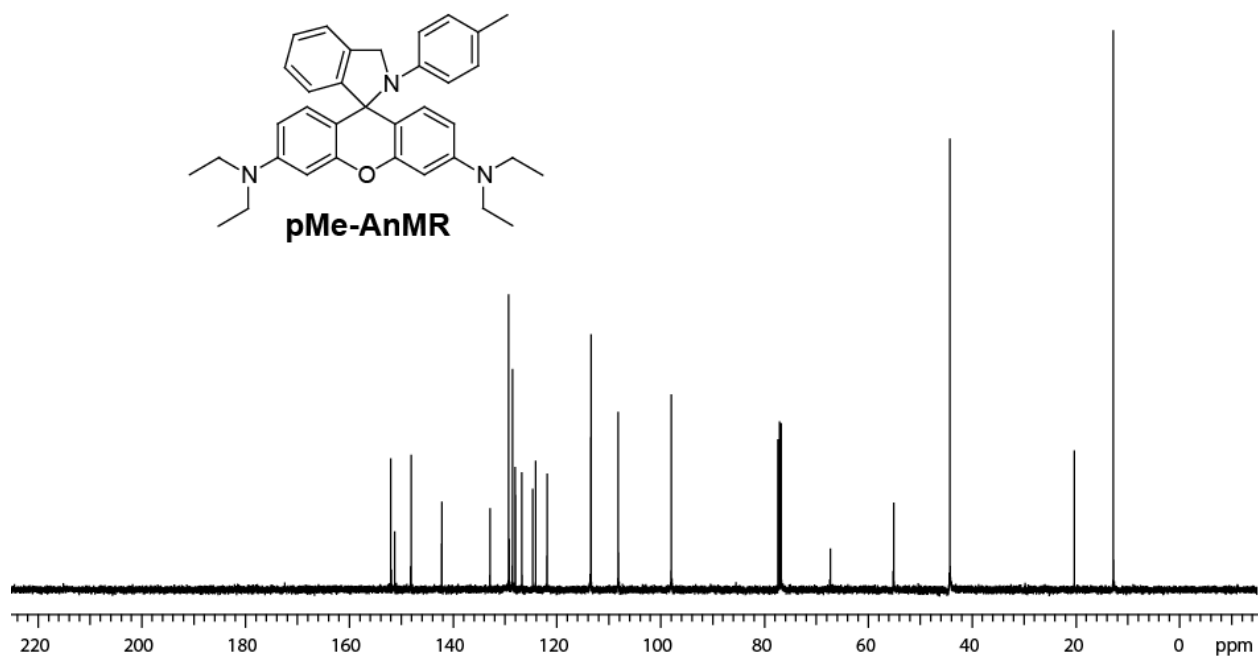
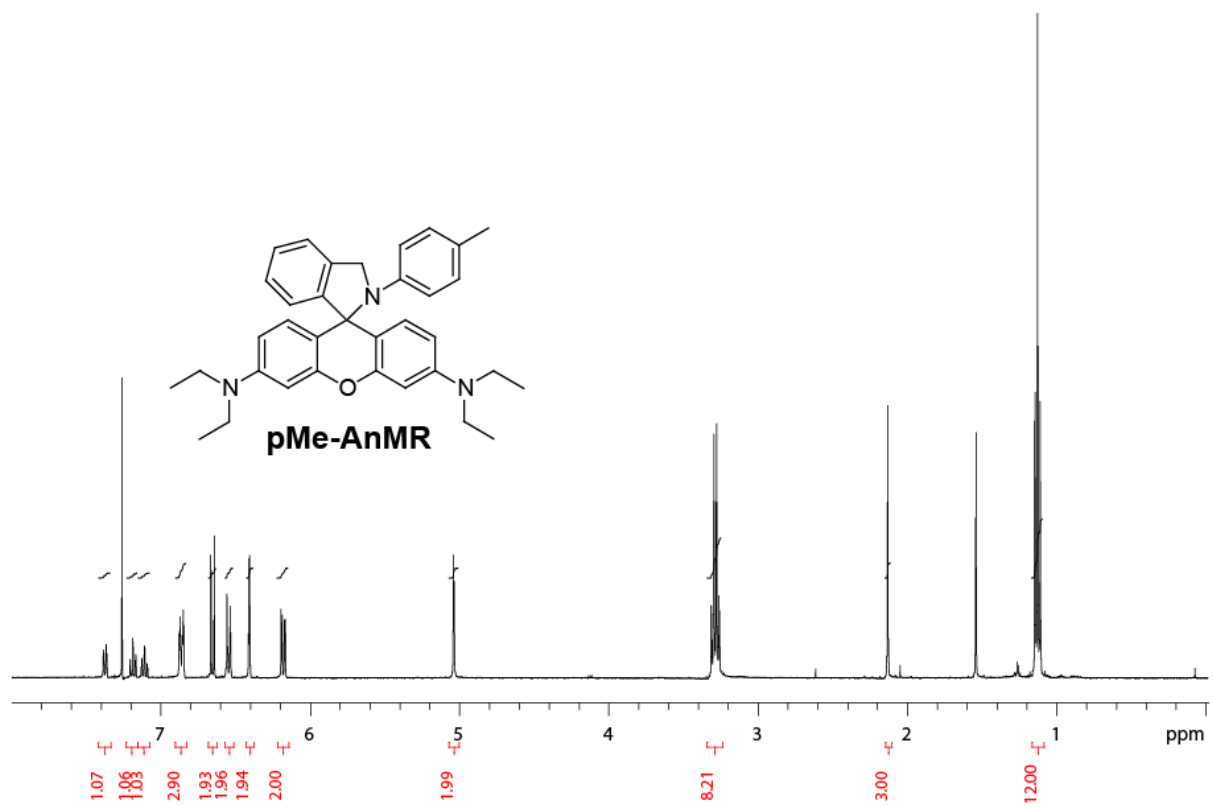
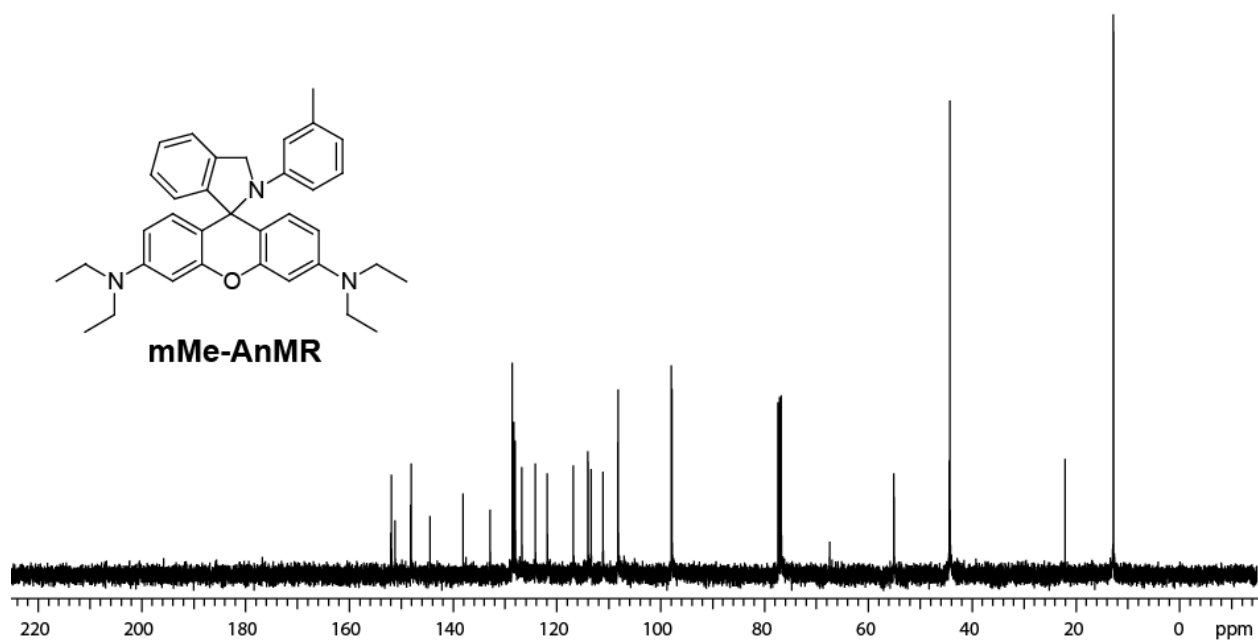
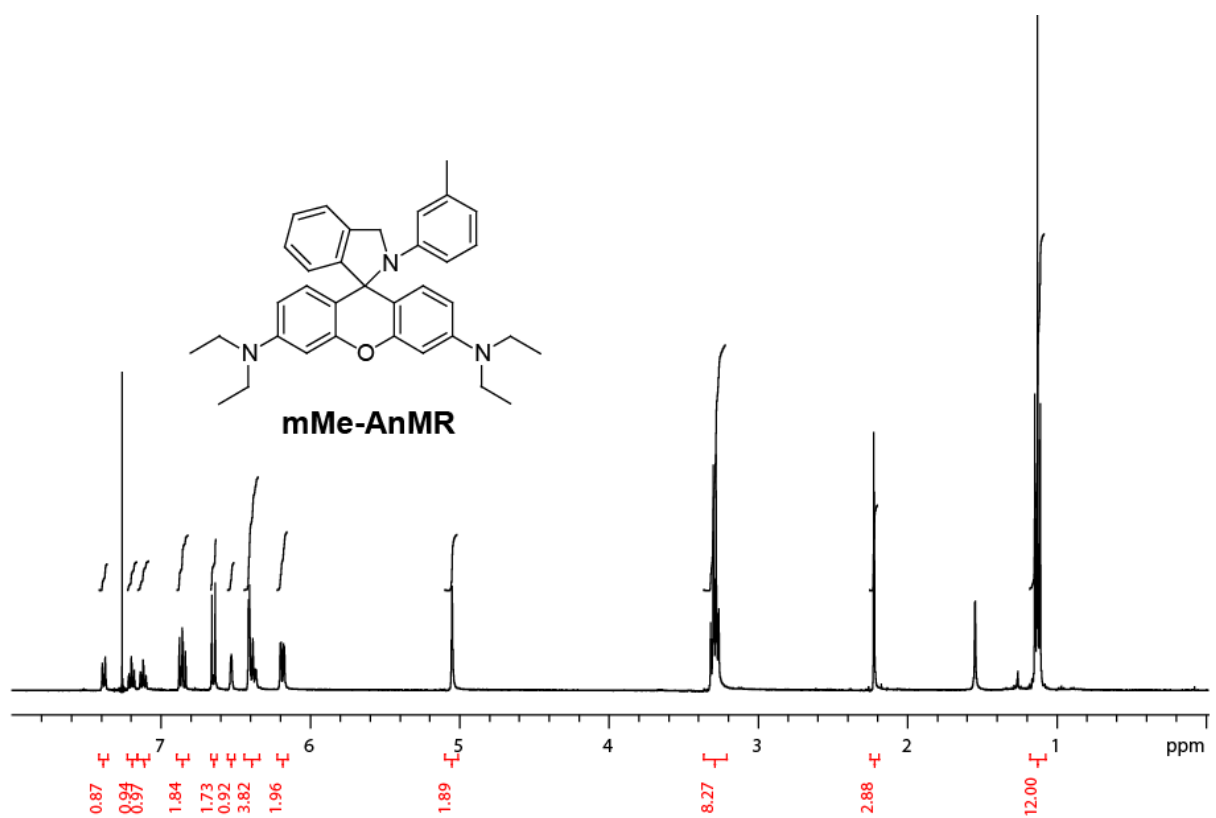


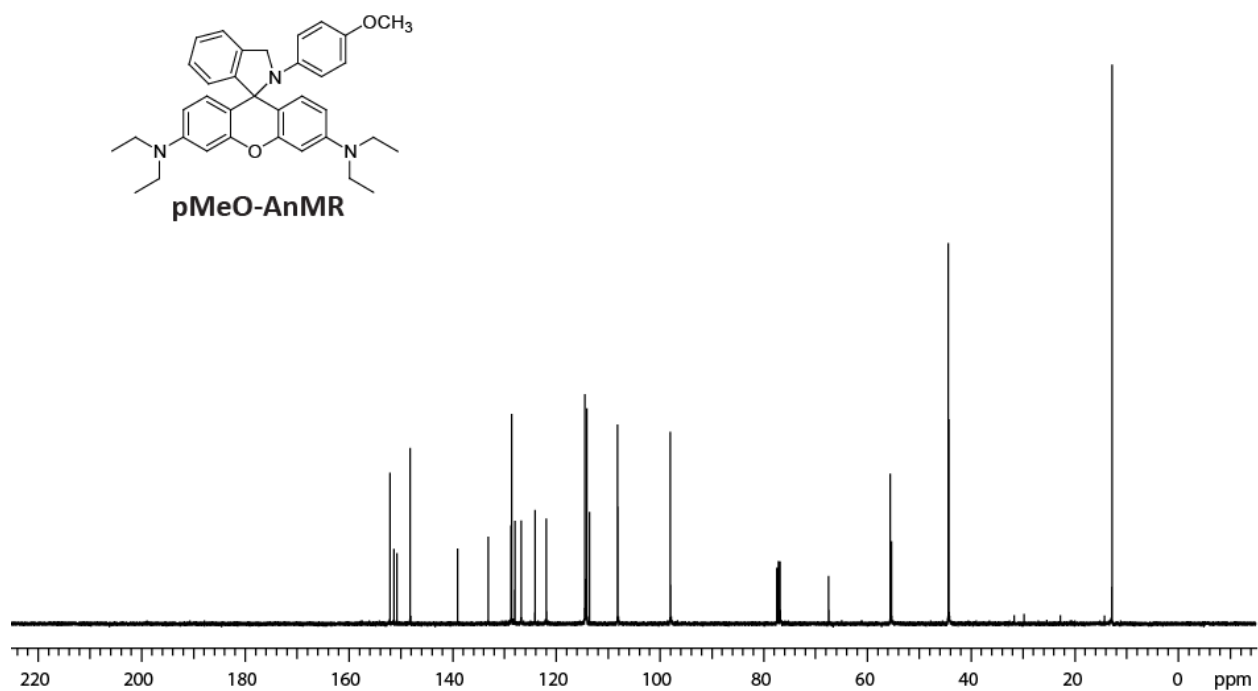
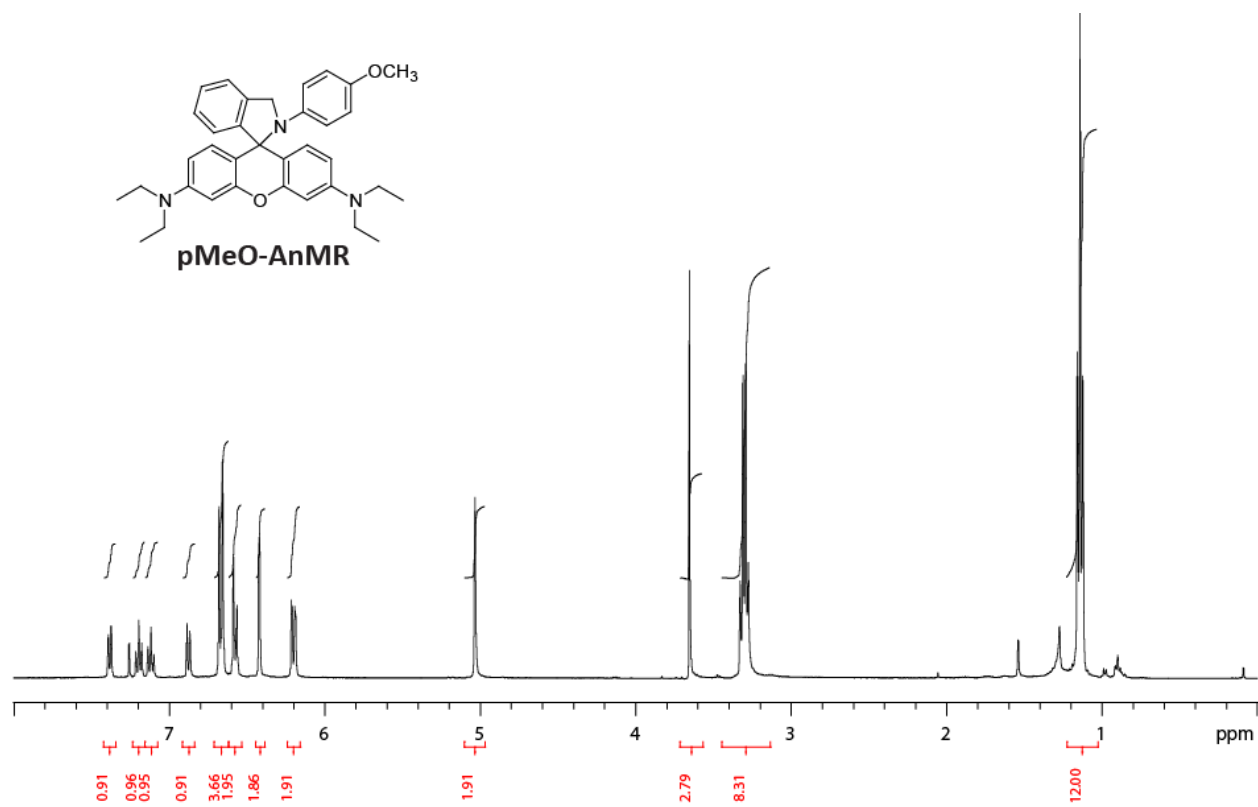
Figure 1. ^1H -NMR titration of a 0.5 mM solution of **AMR** in d_6 -DMSO with D_2SO_4 .

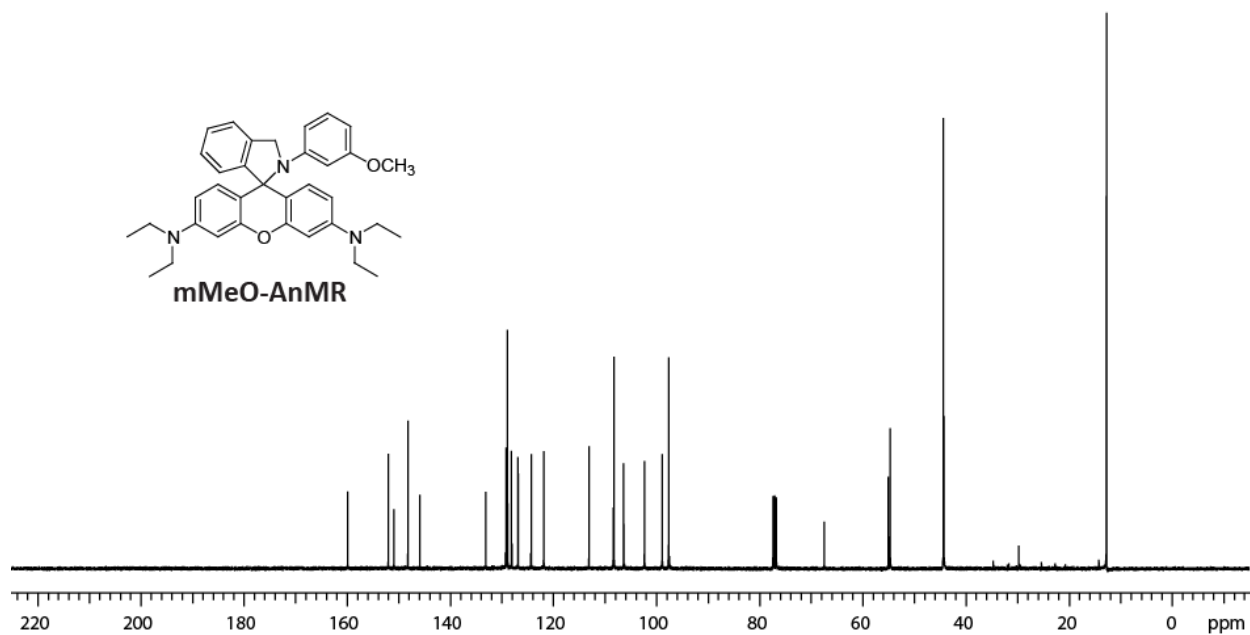
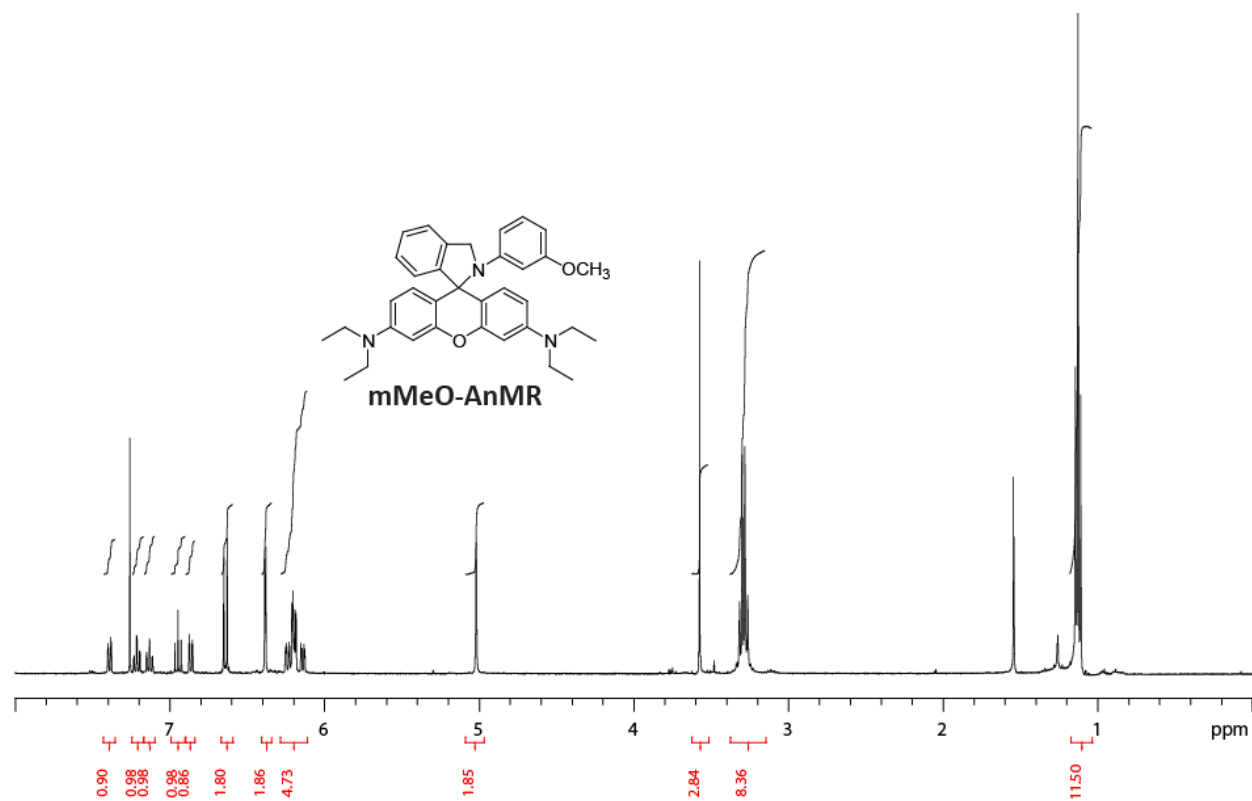
NMR Spectra of Compounds

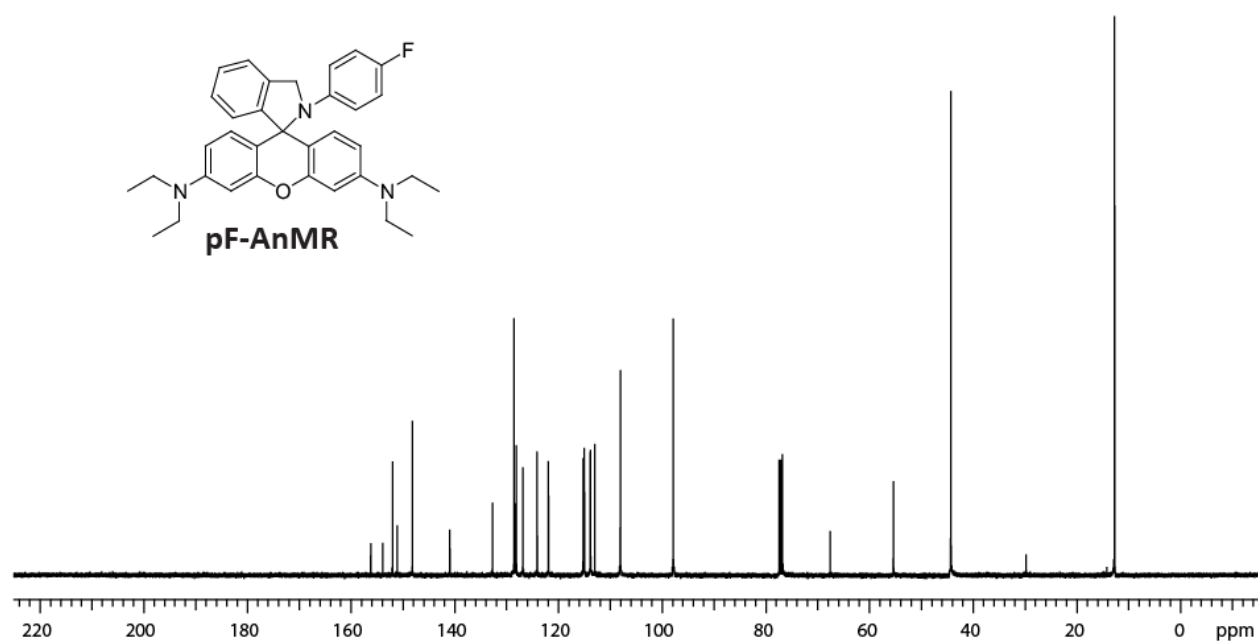
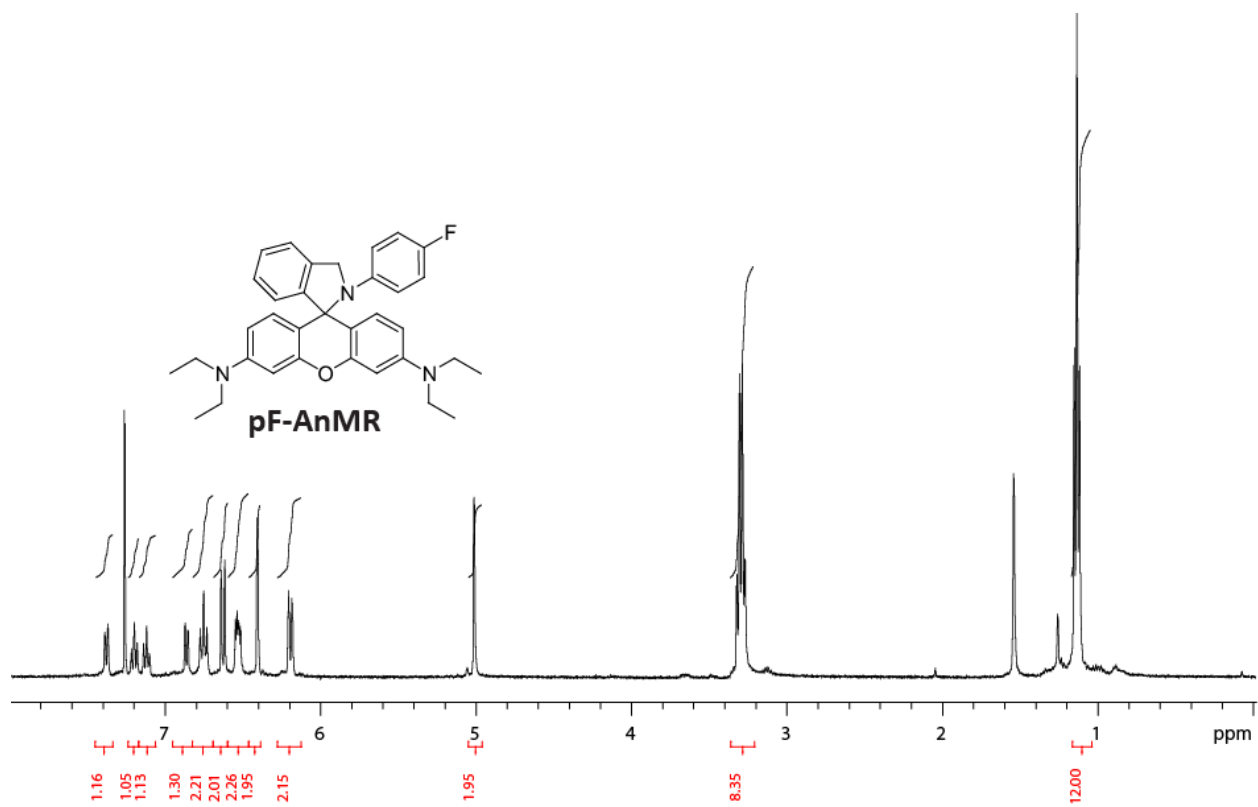


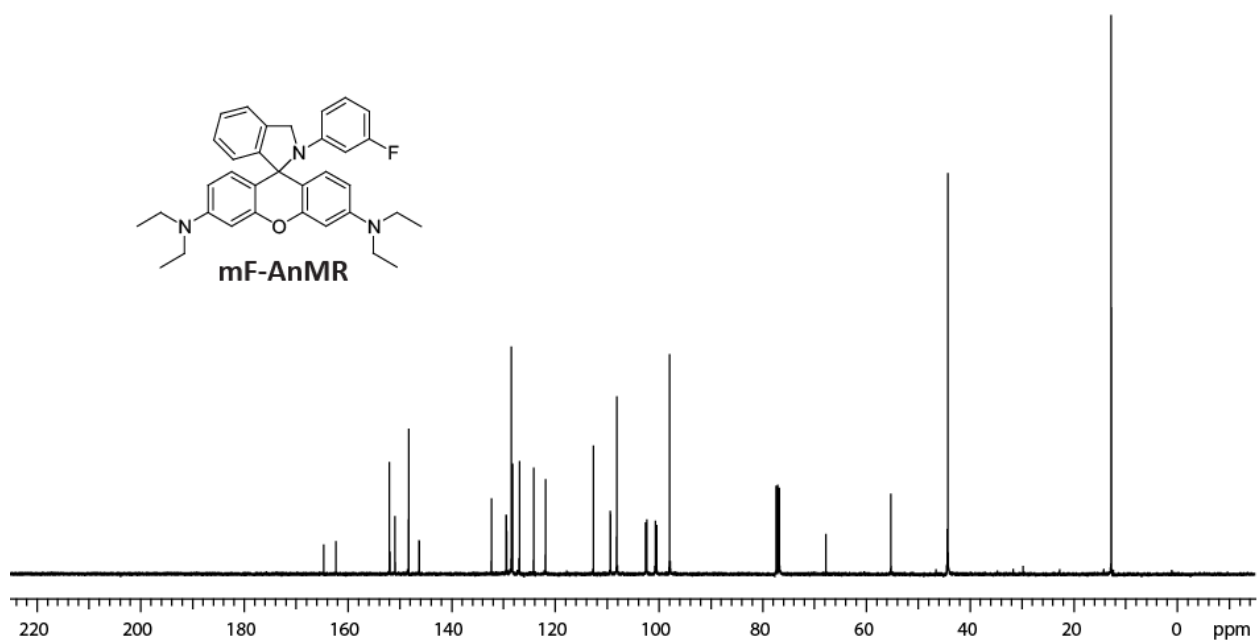
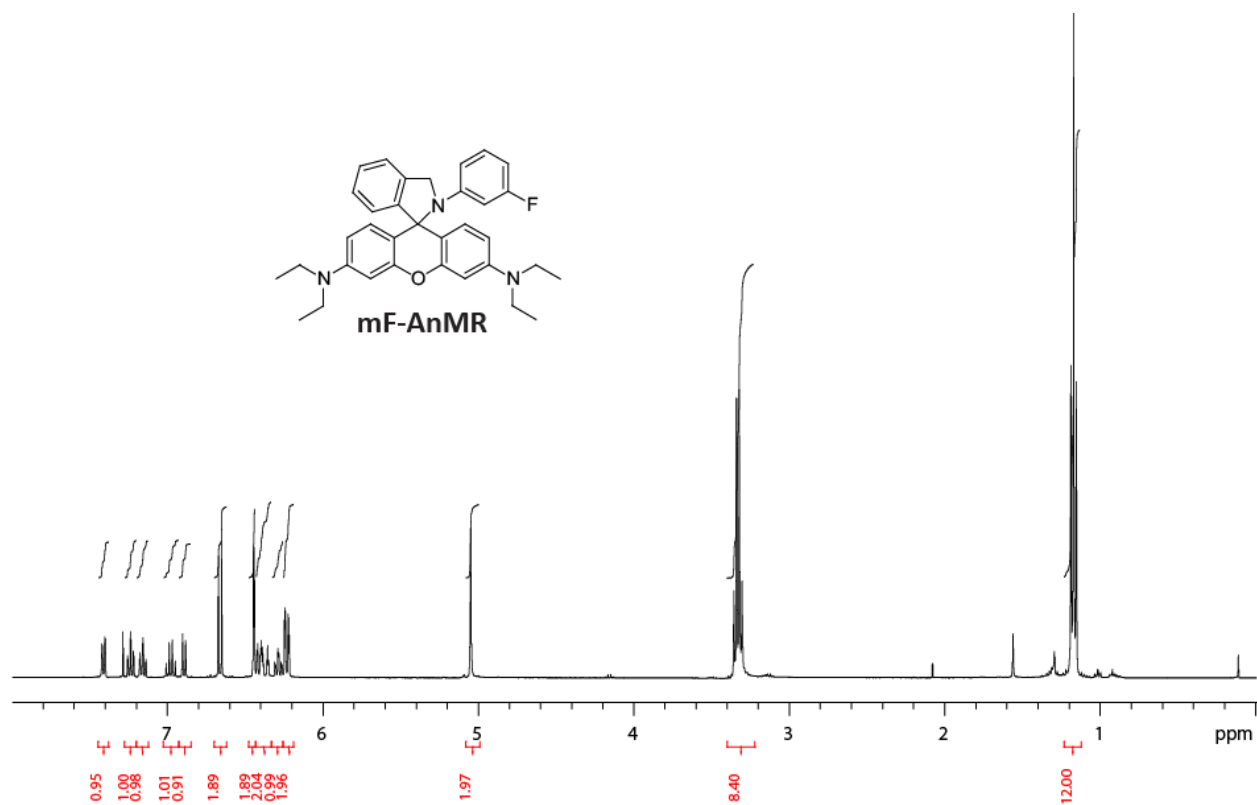


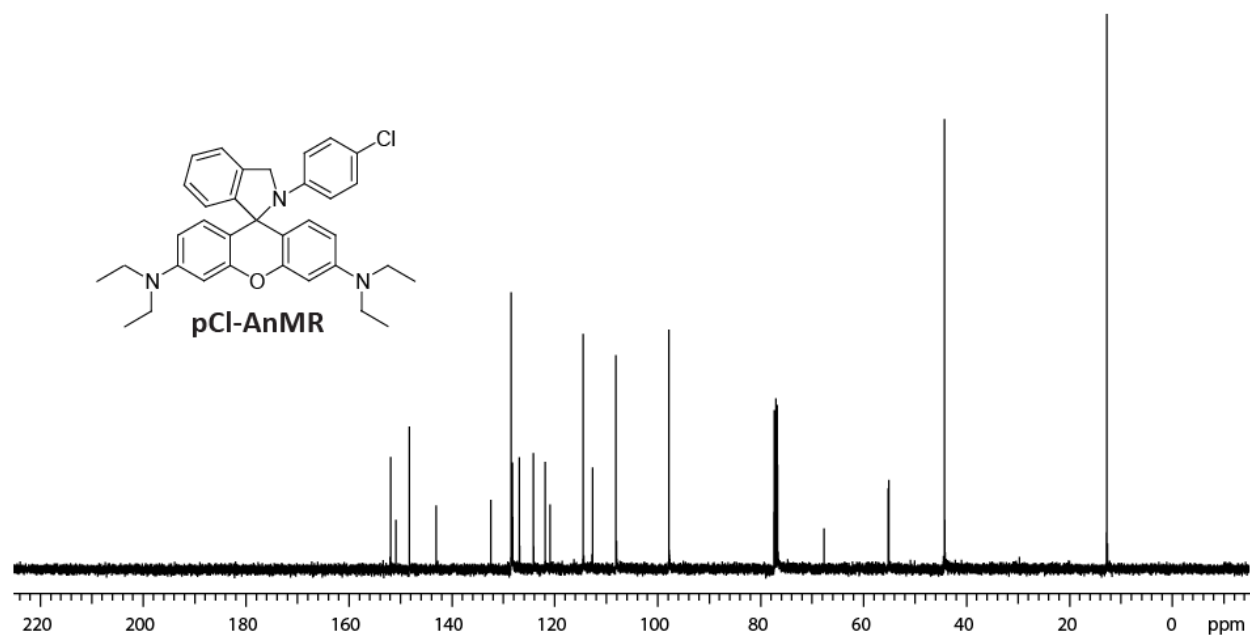
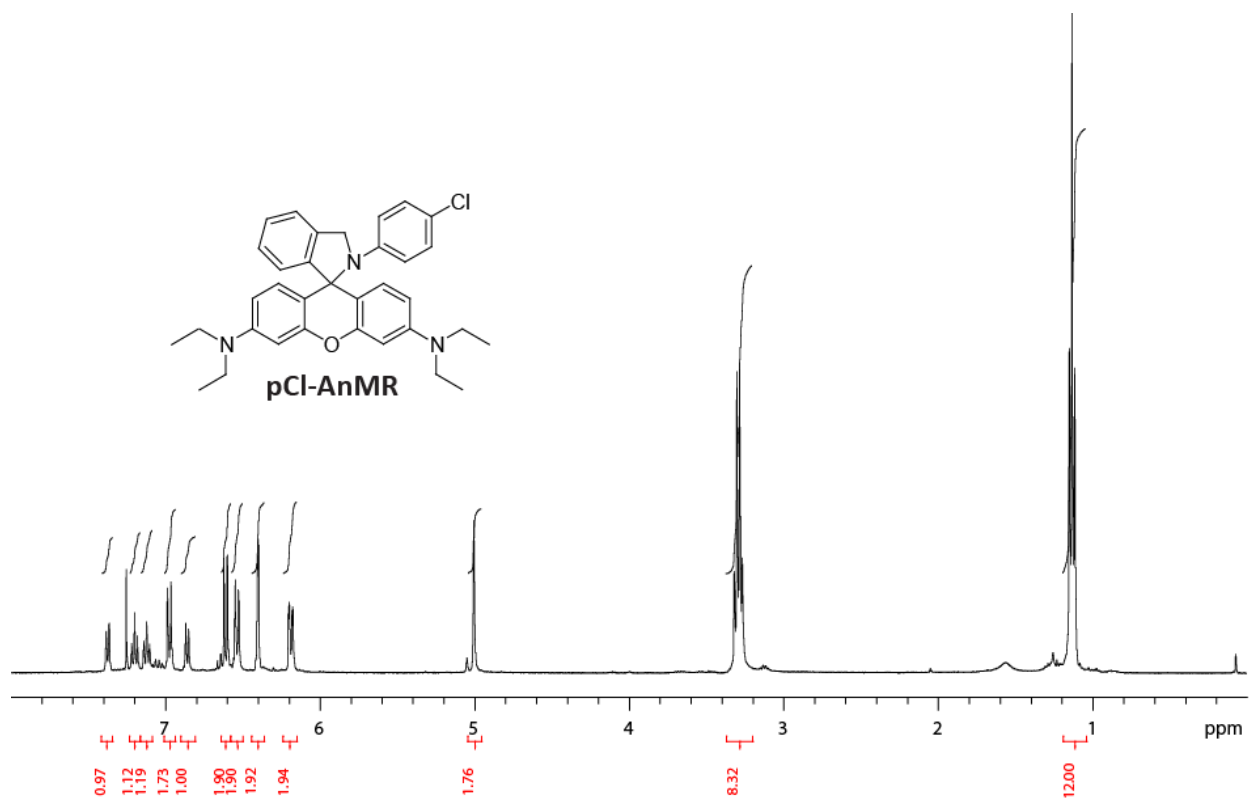


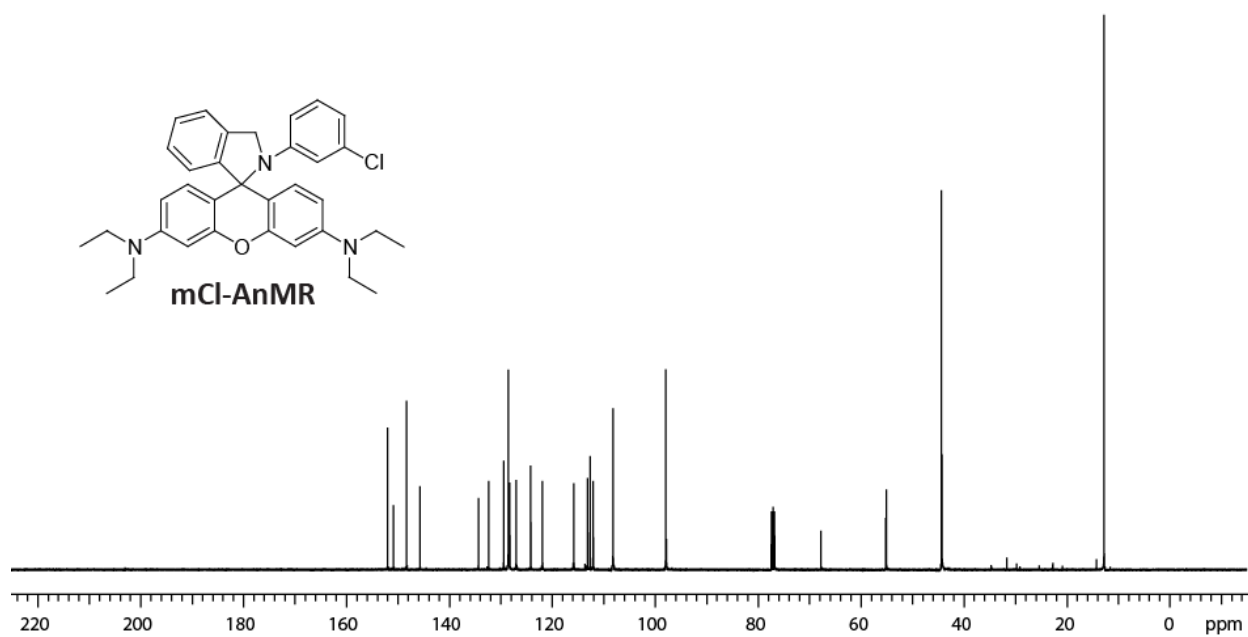
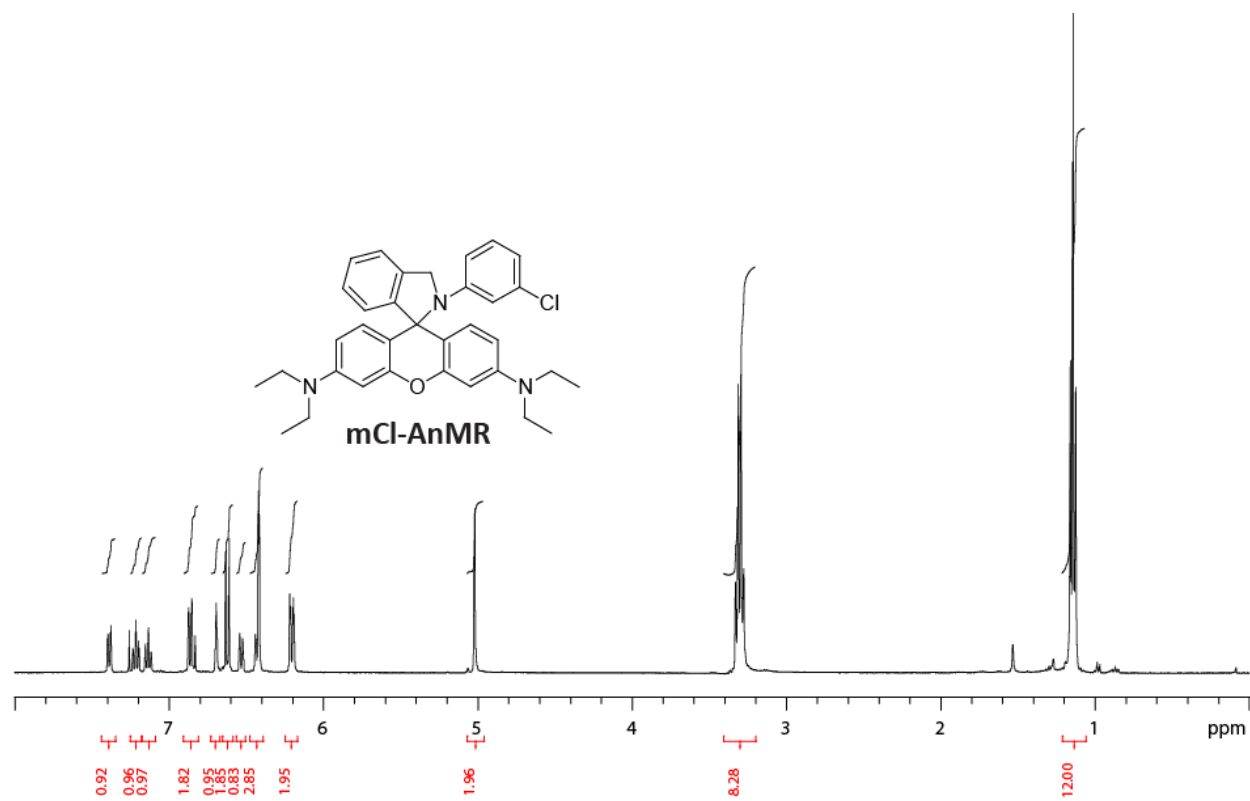


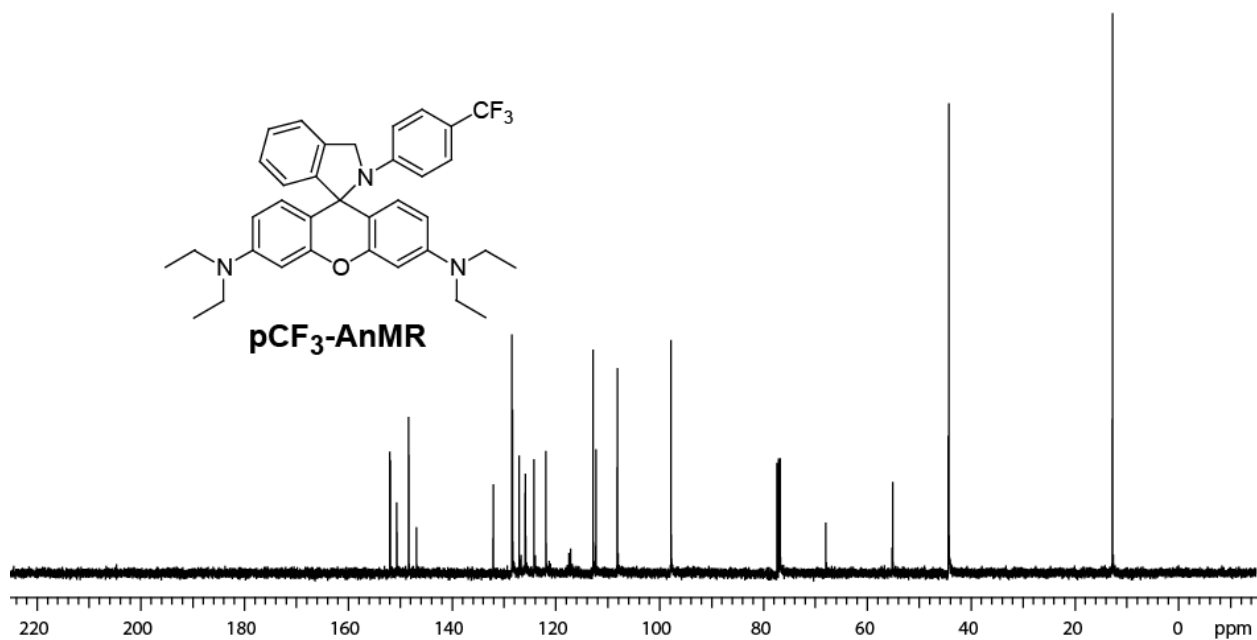
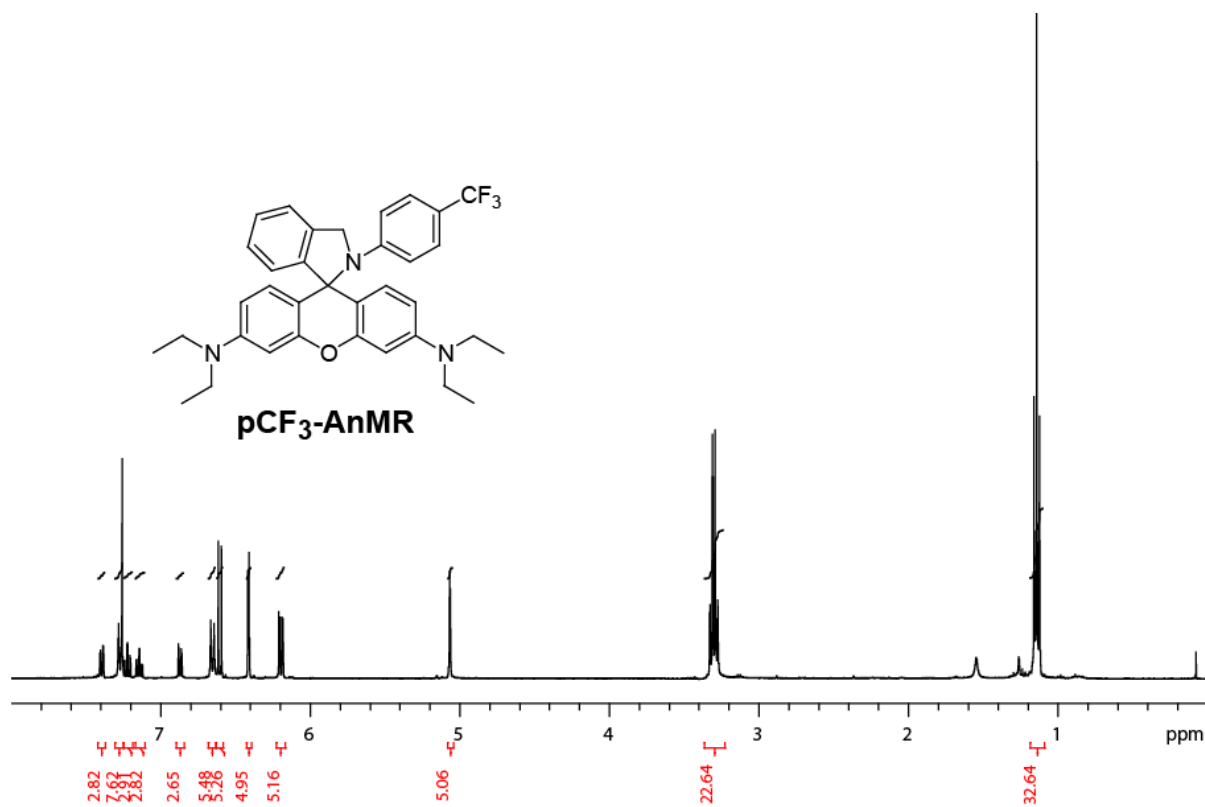


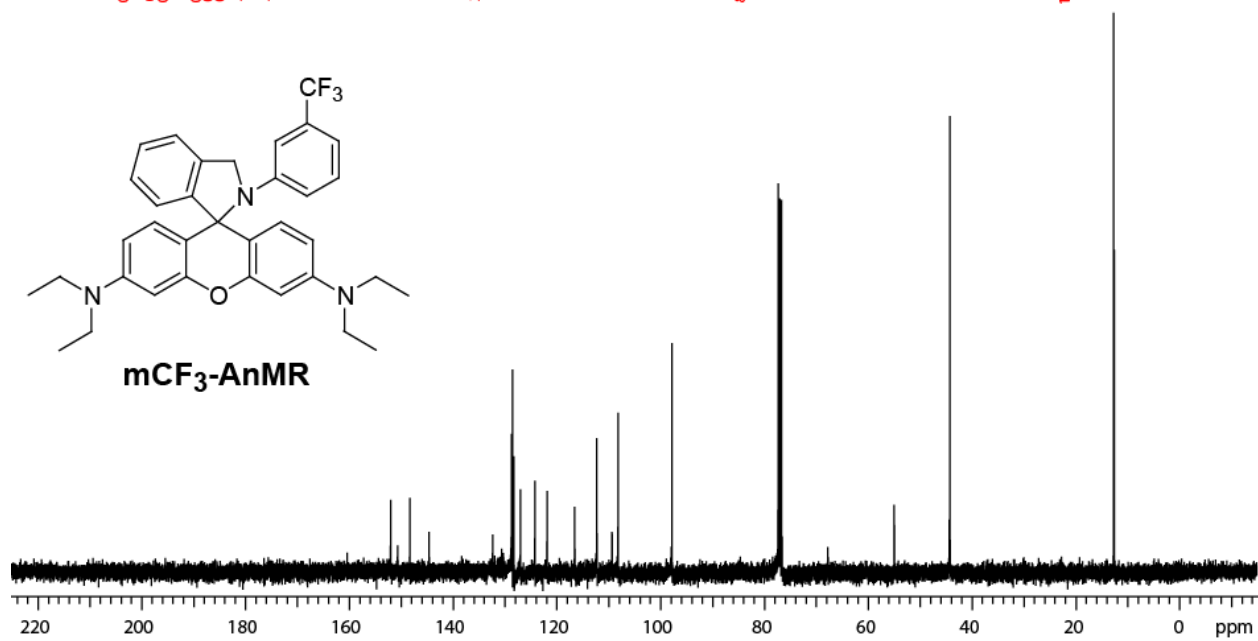
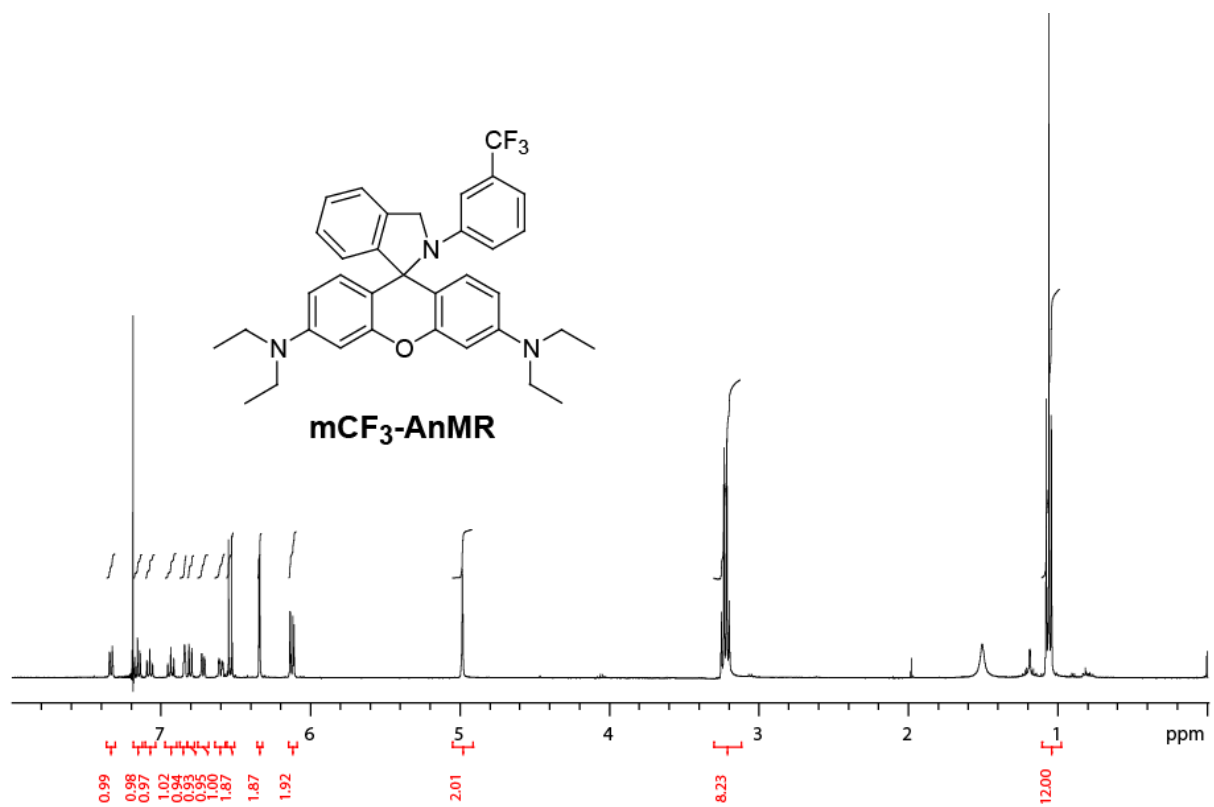


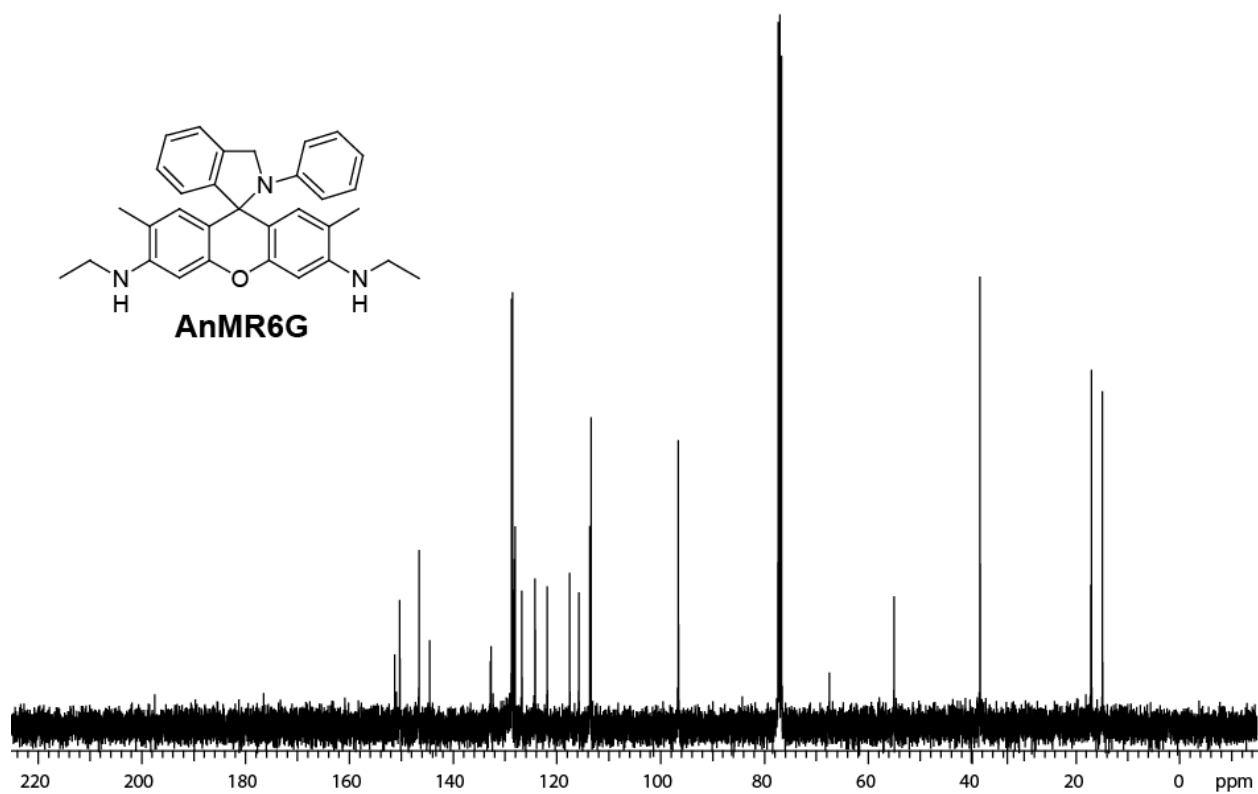
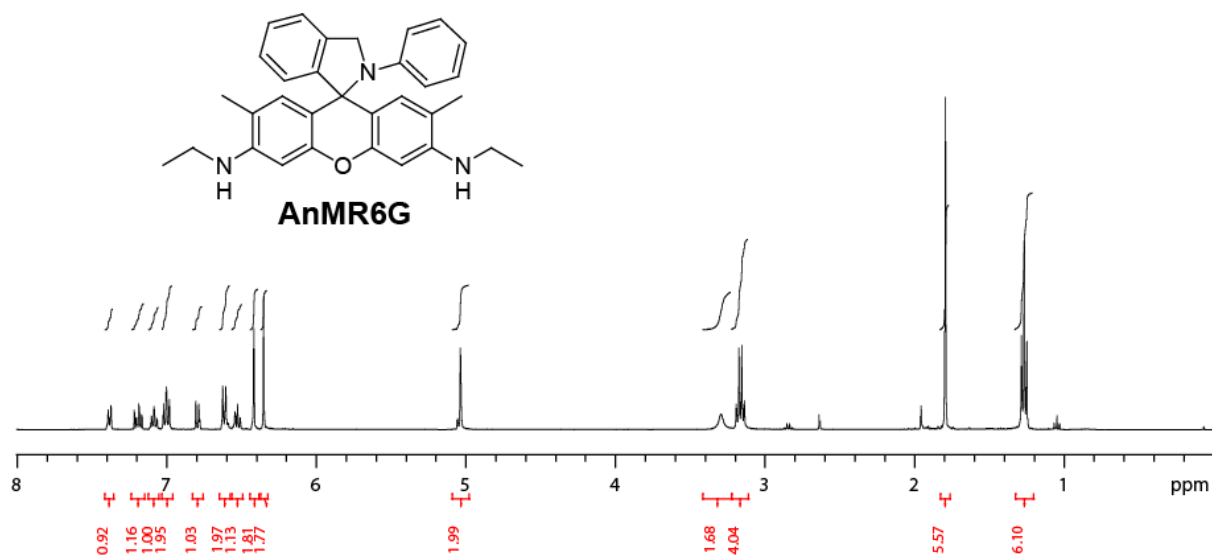


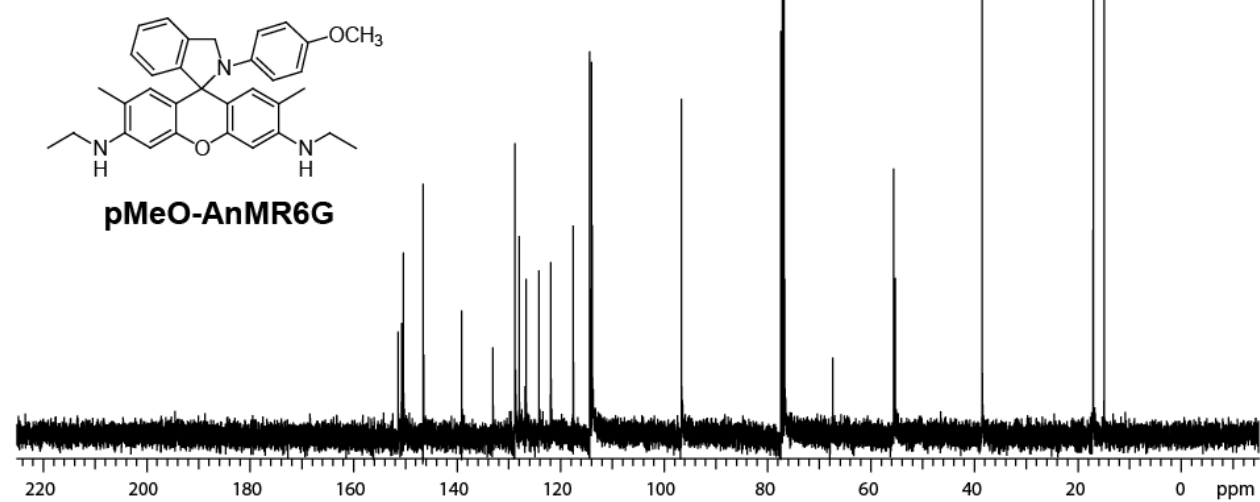
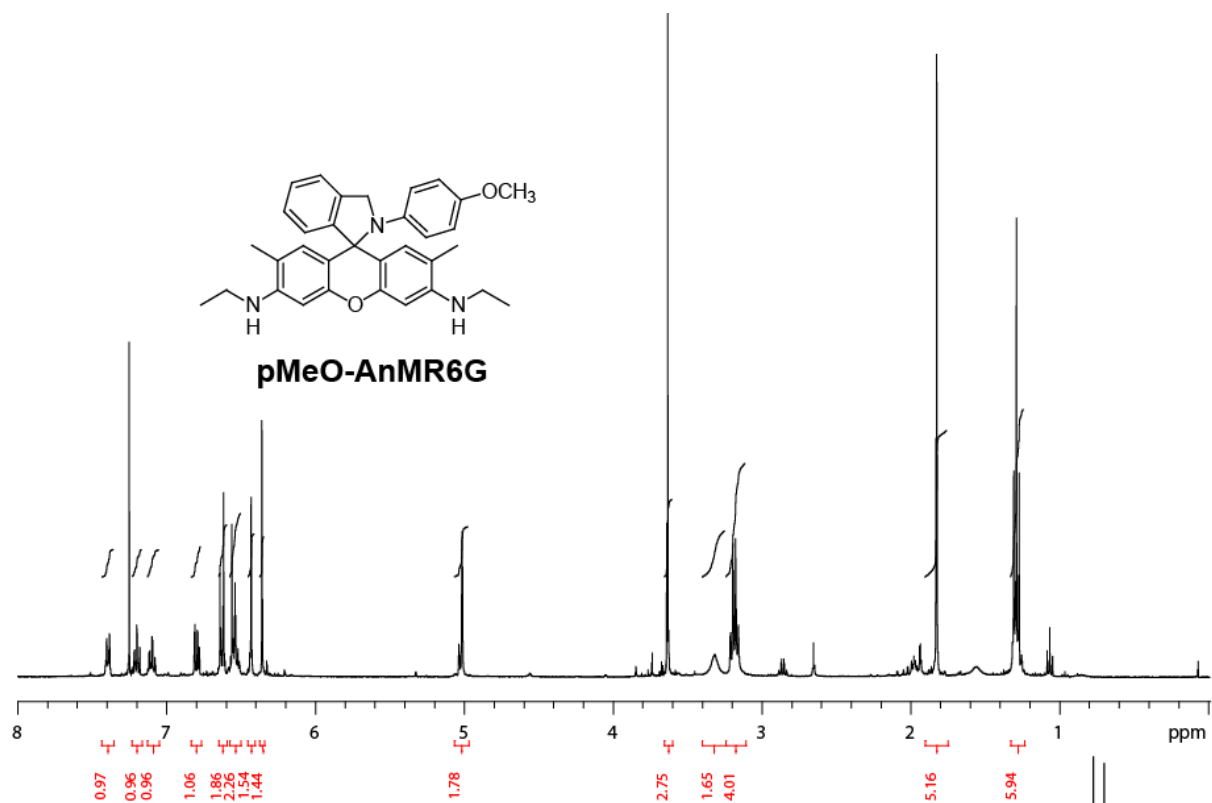


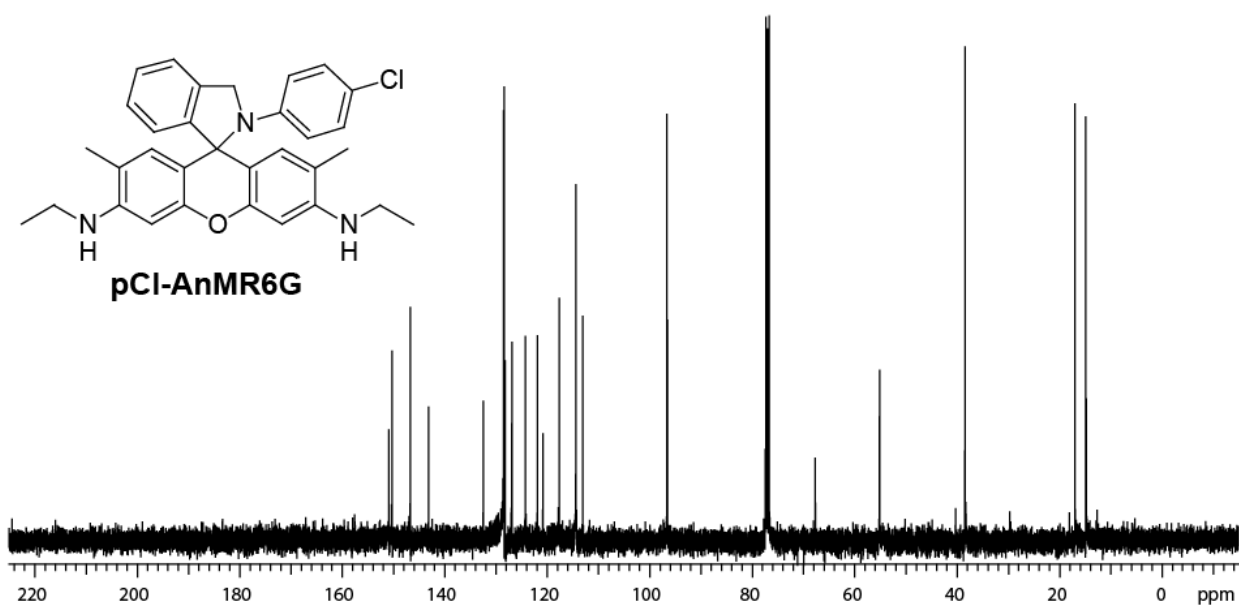
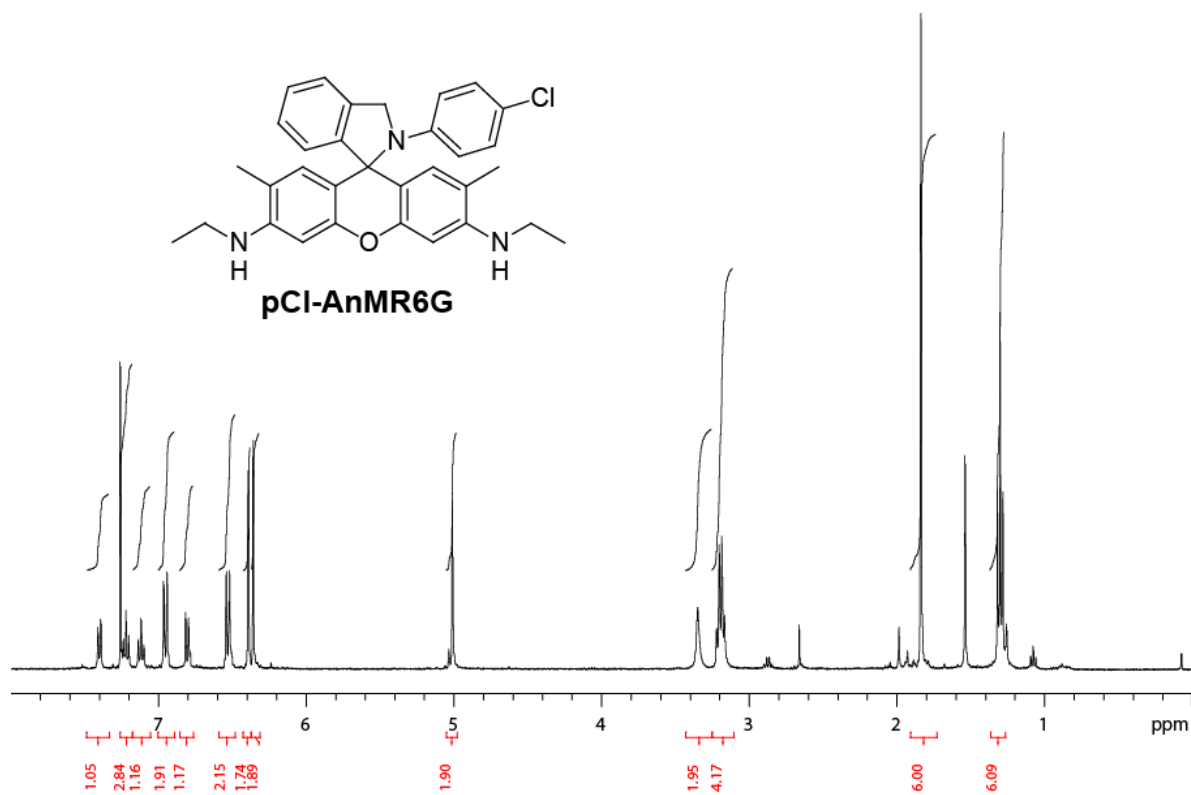


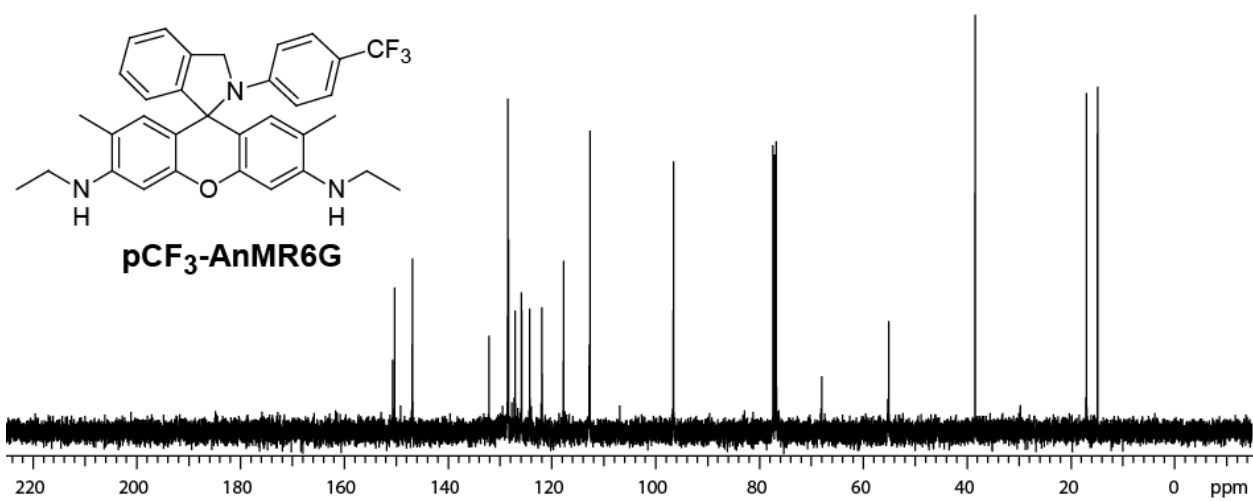
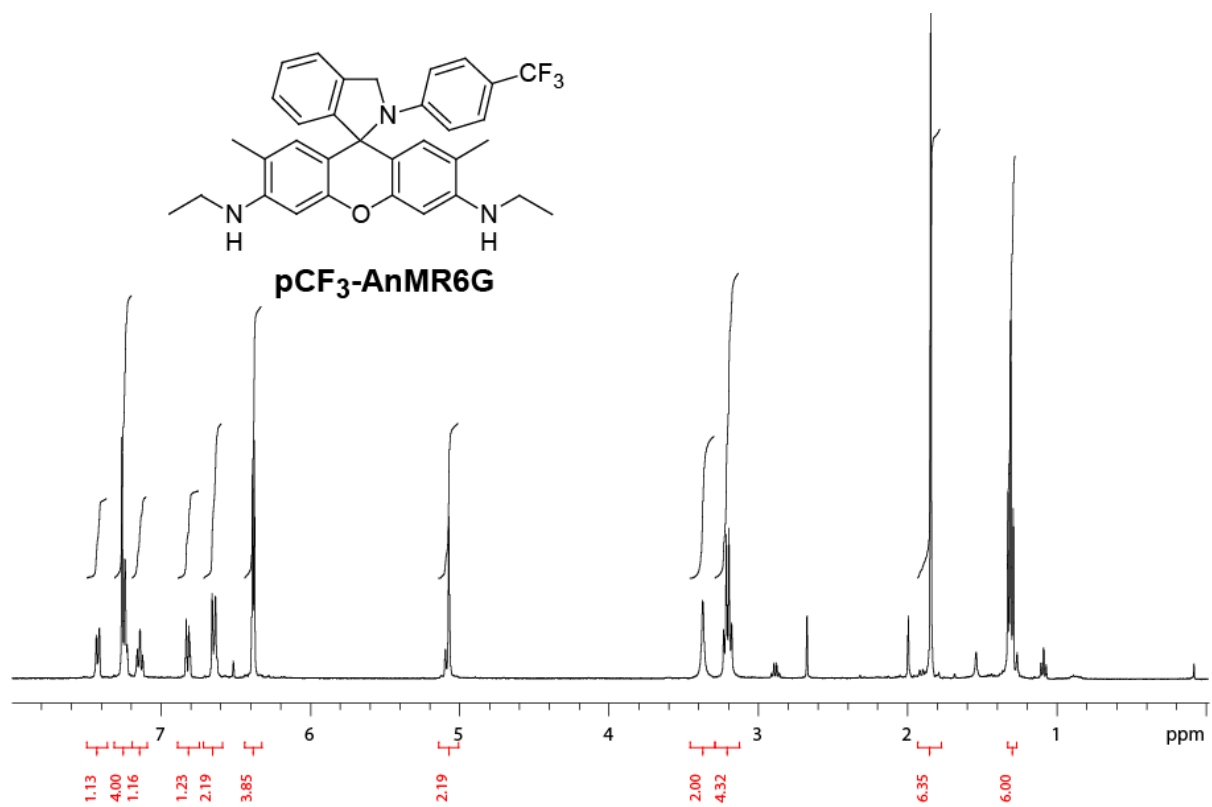


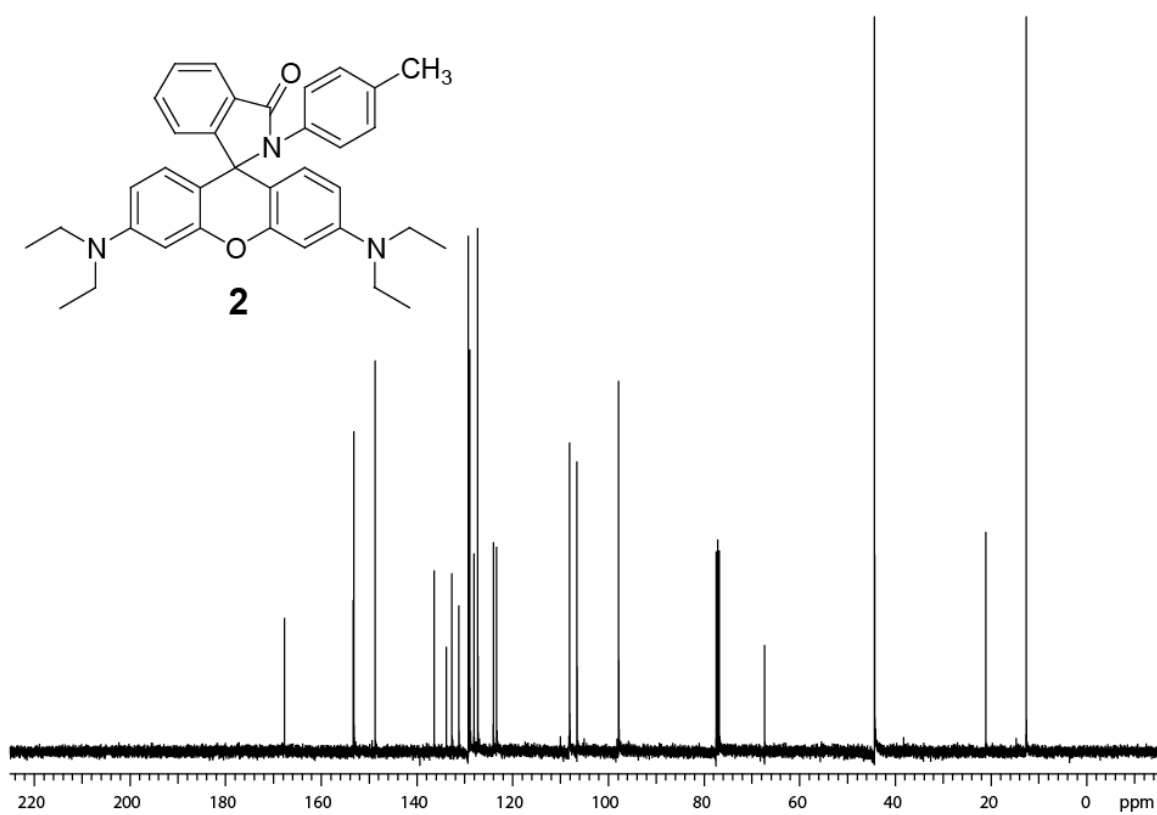
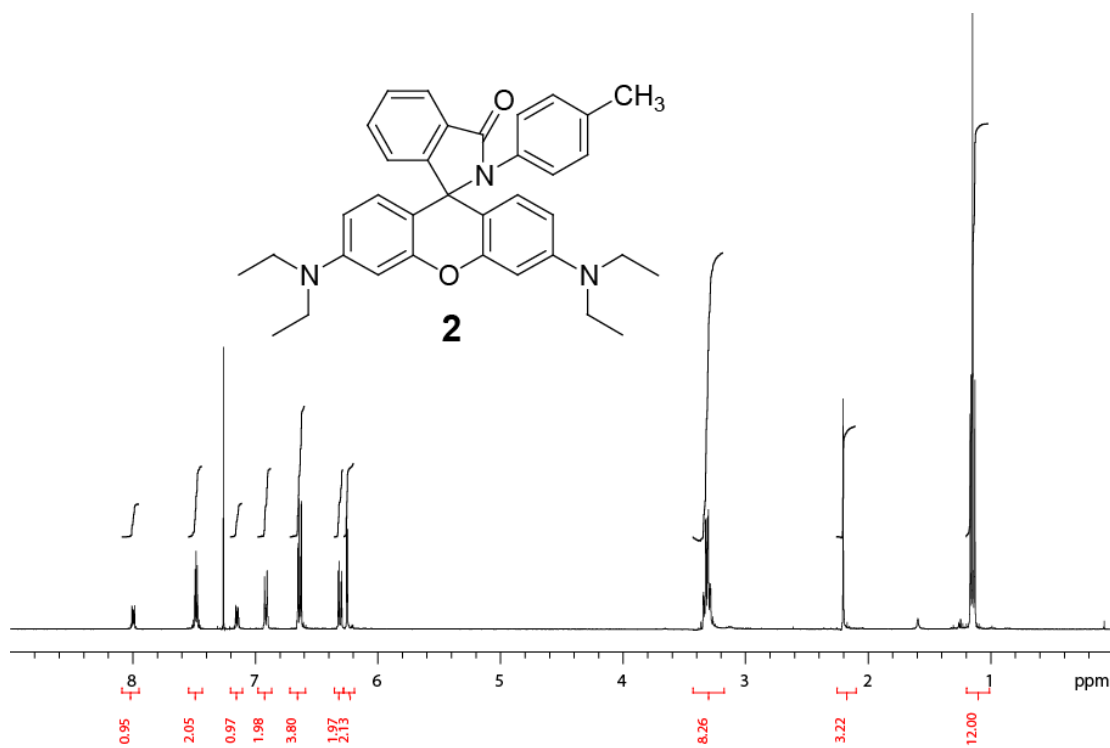


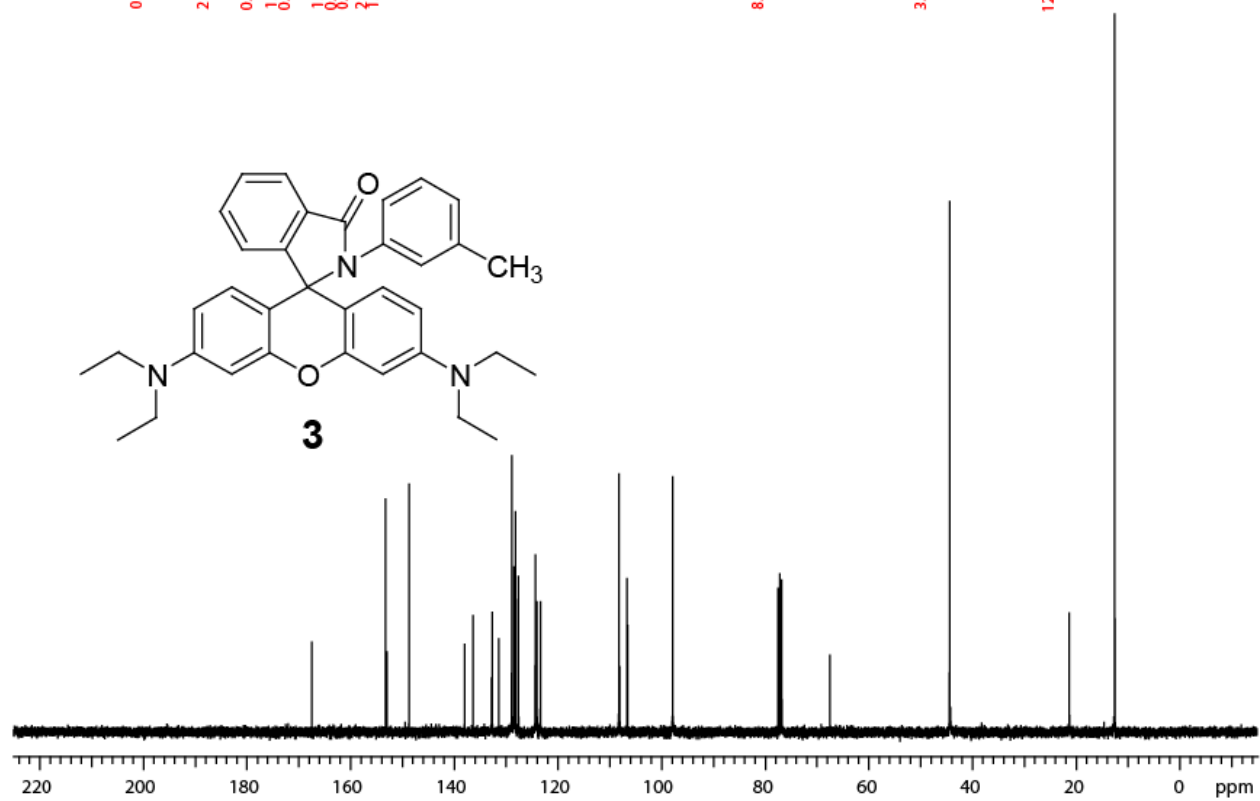
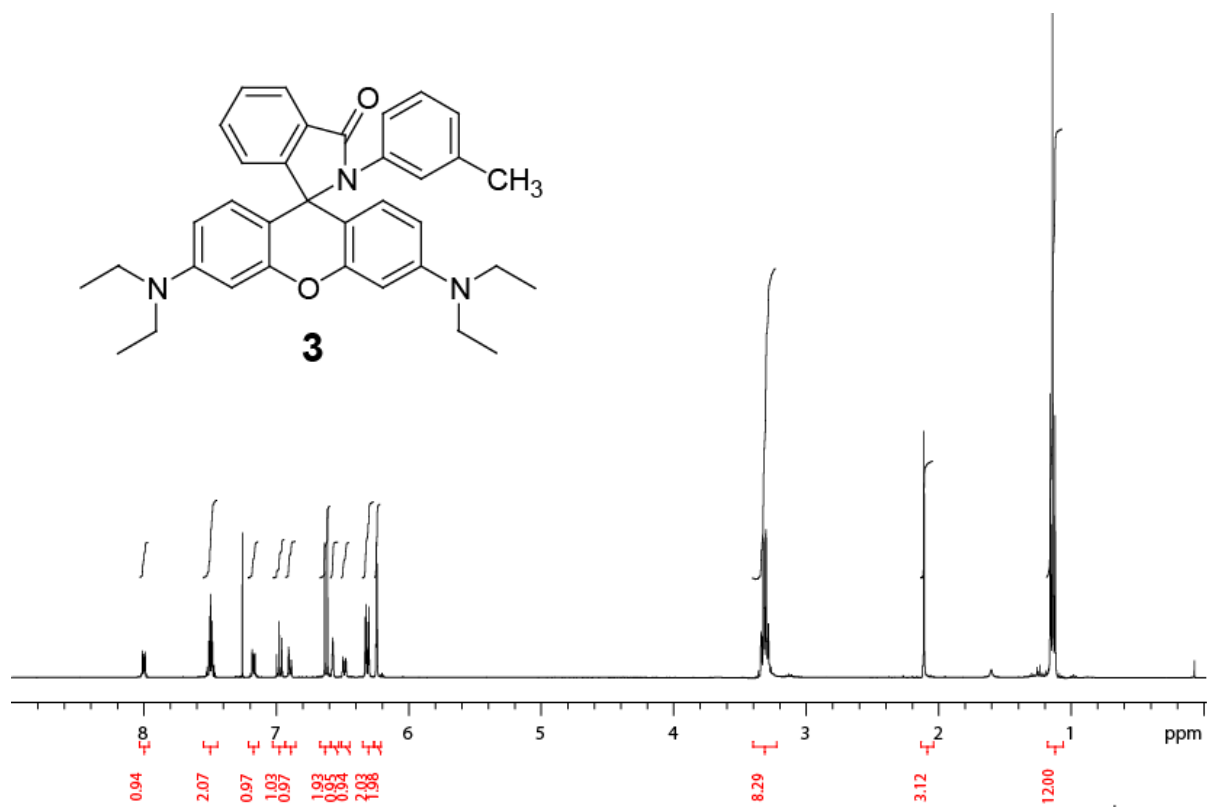


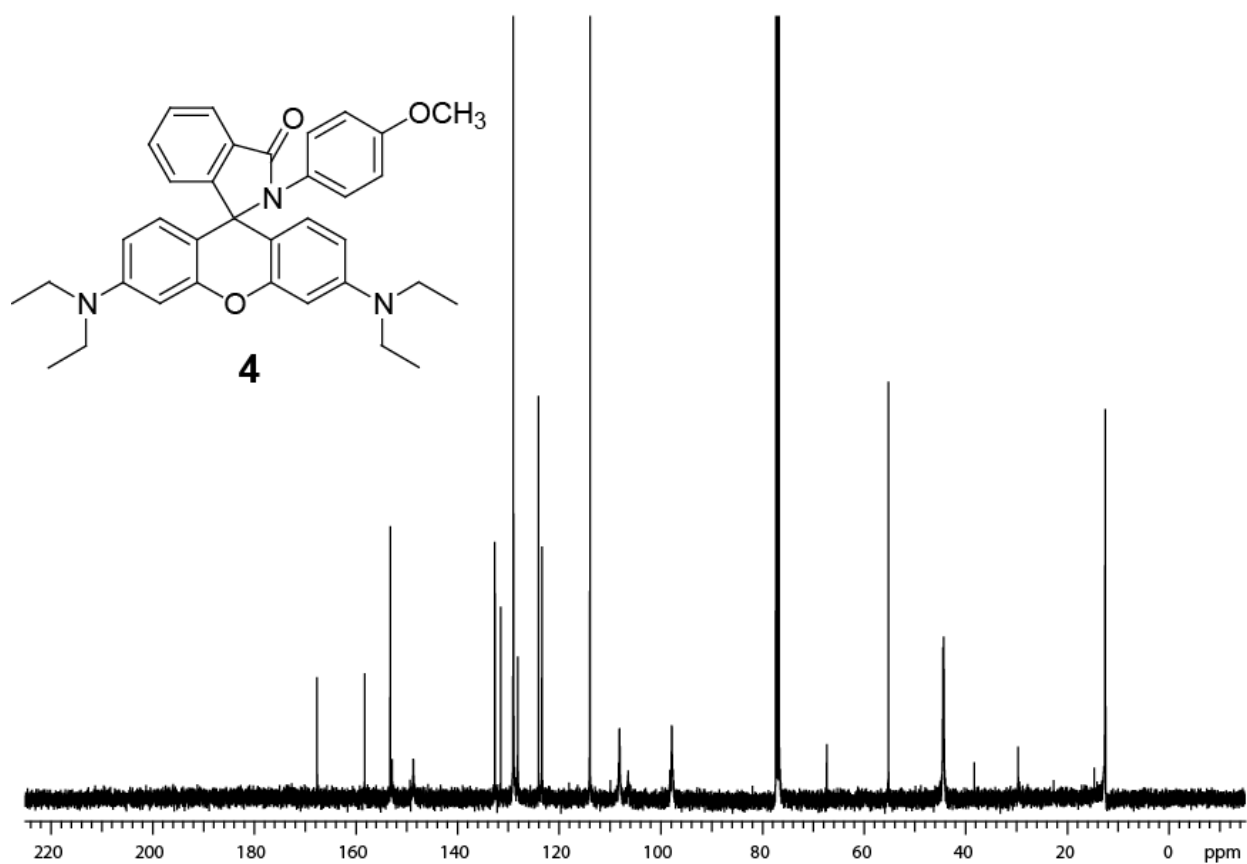
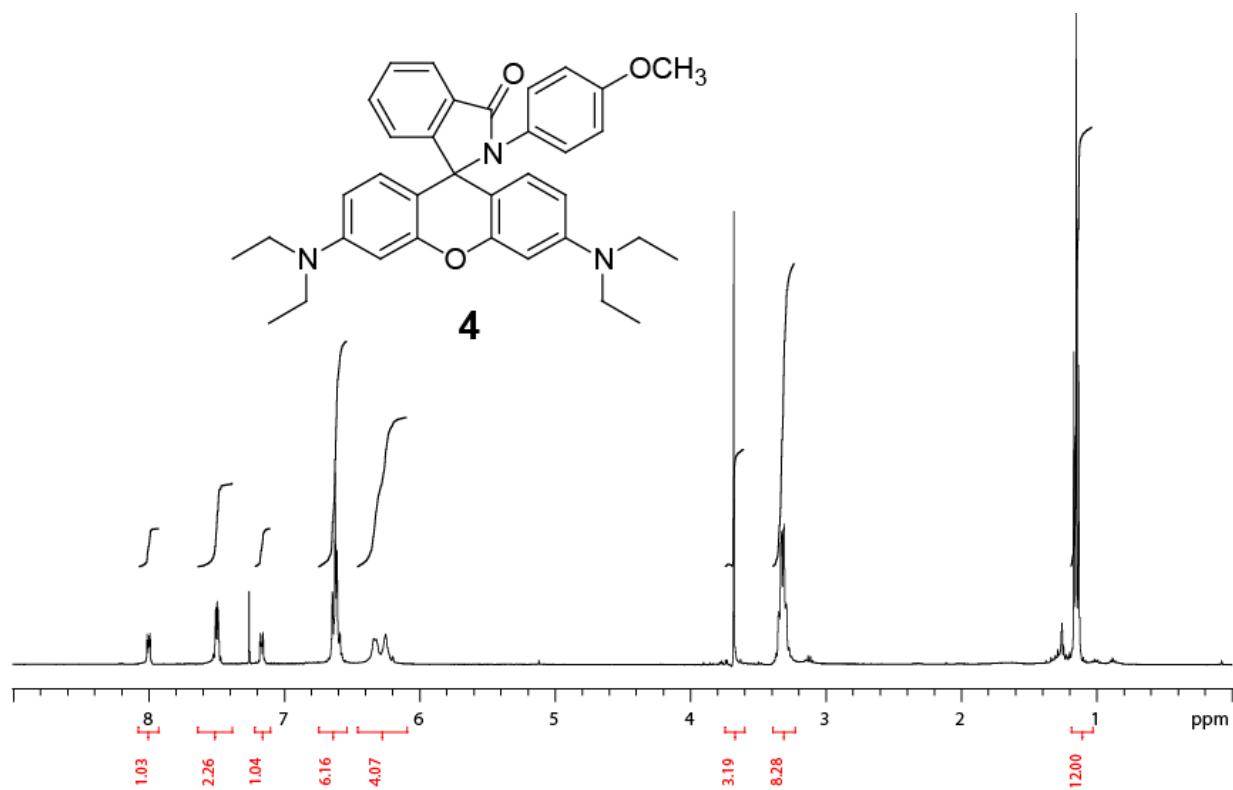


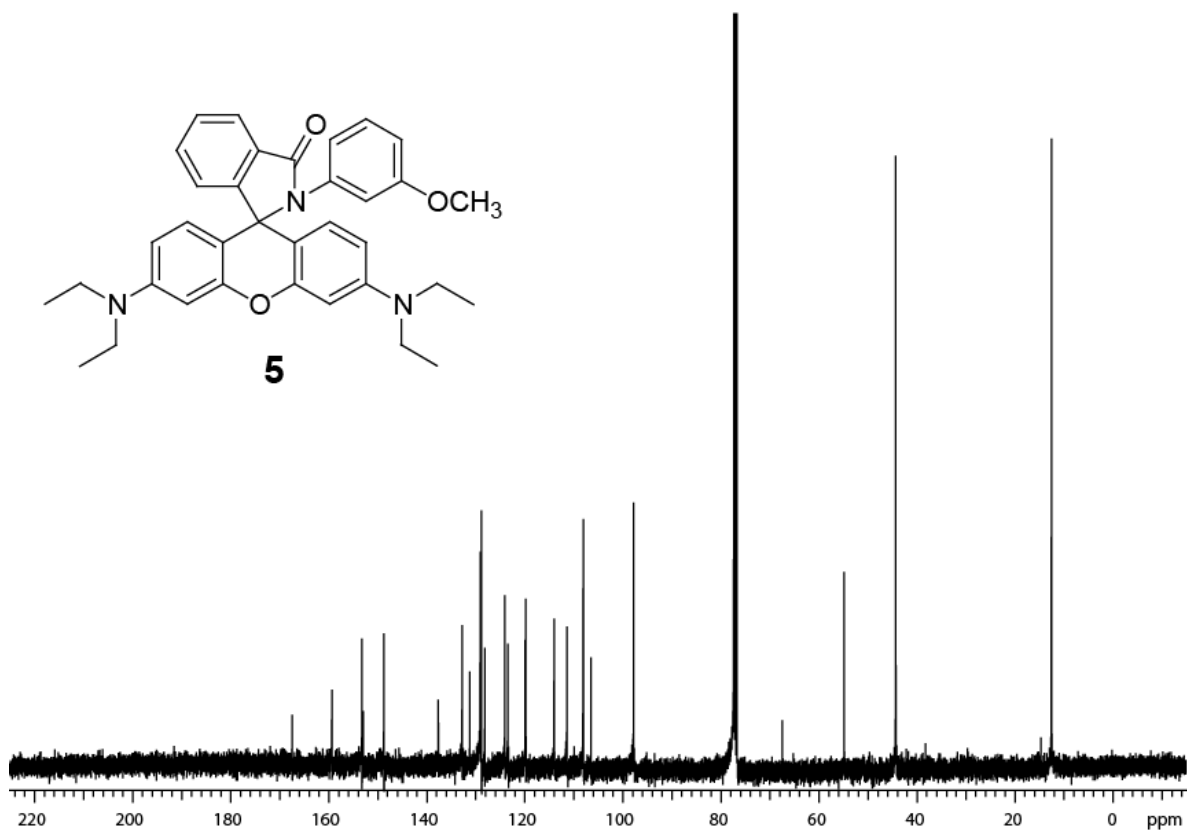
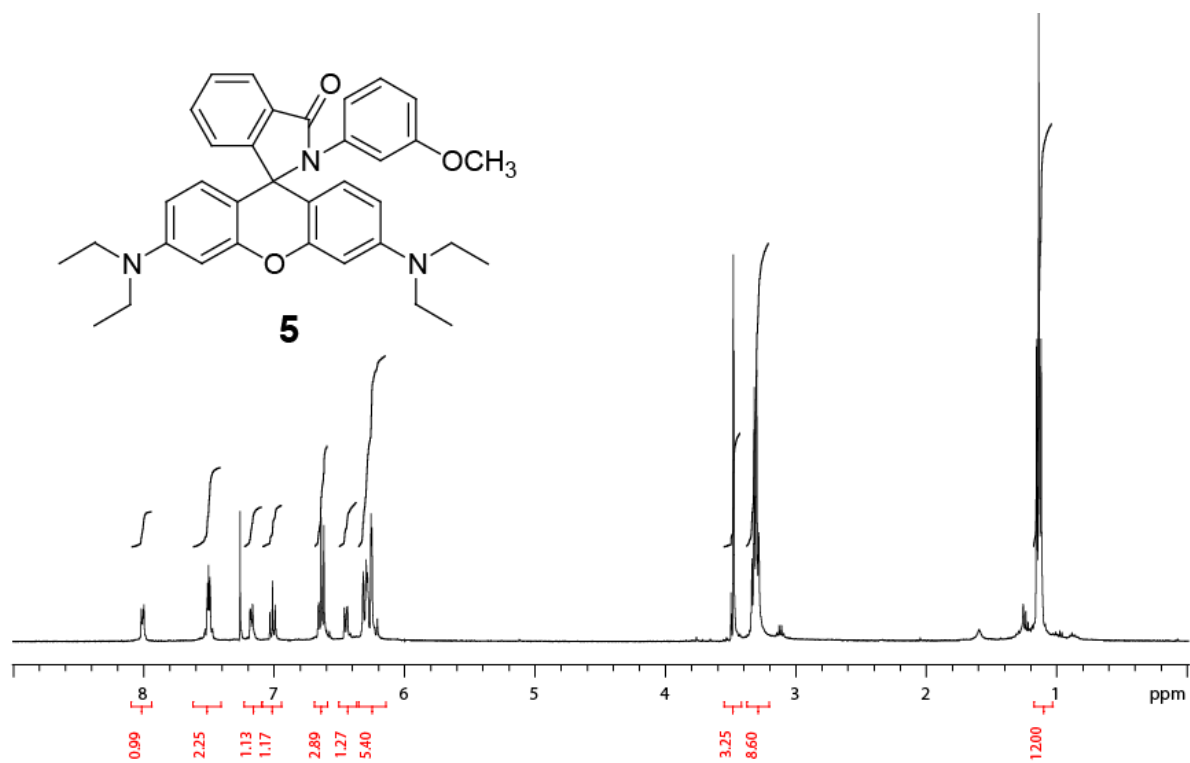


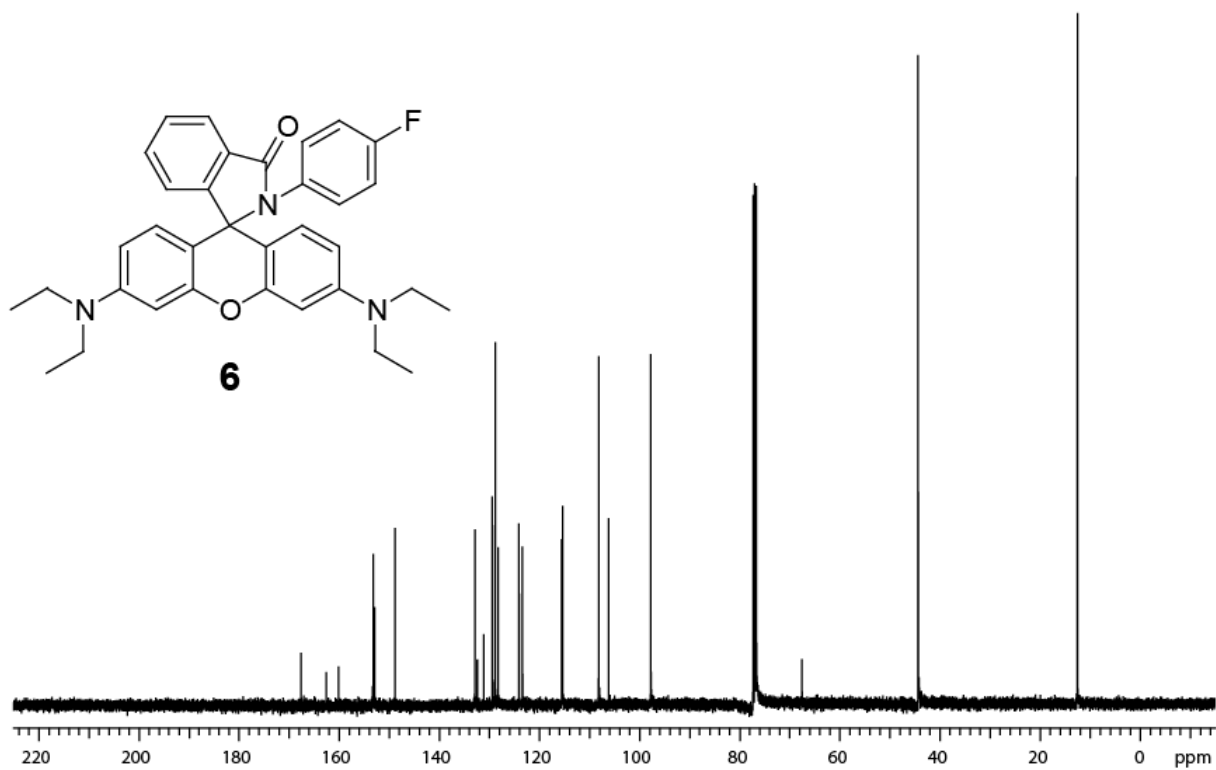
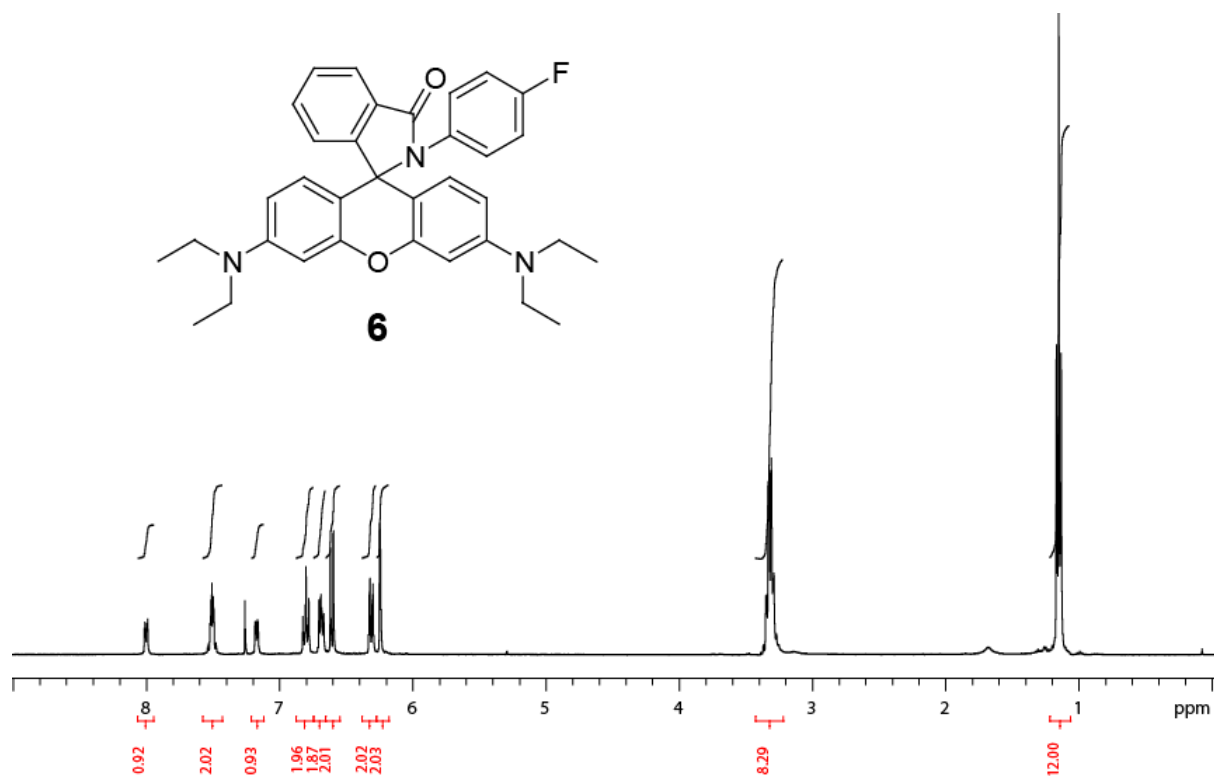


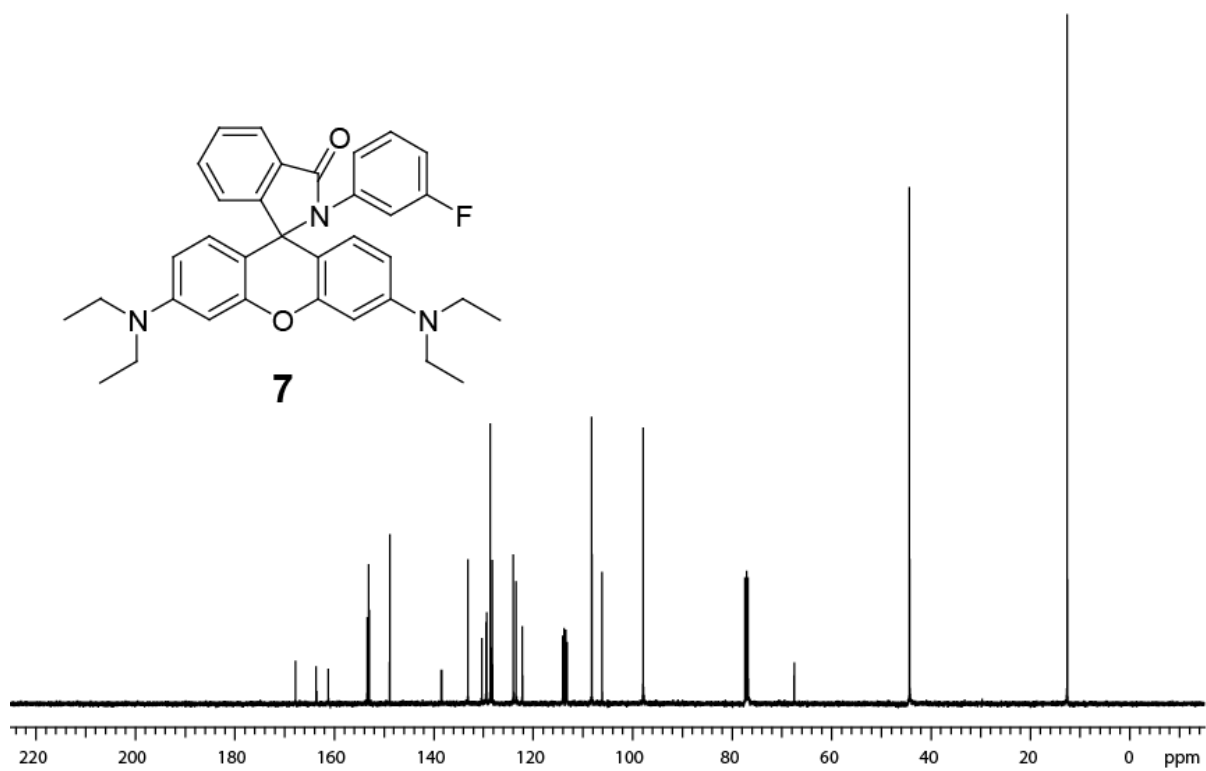
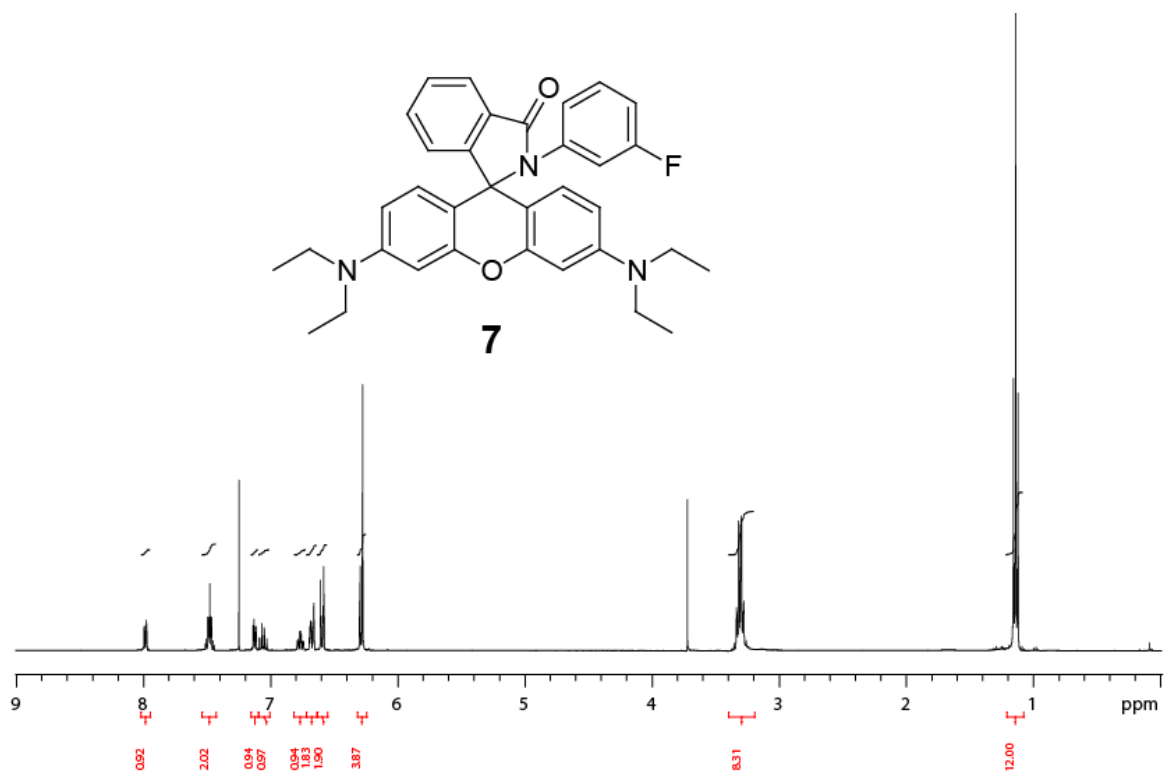


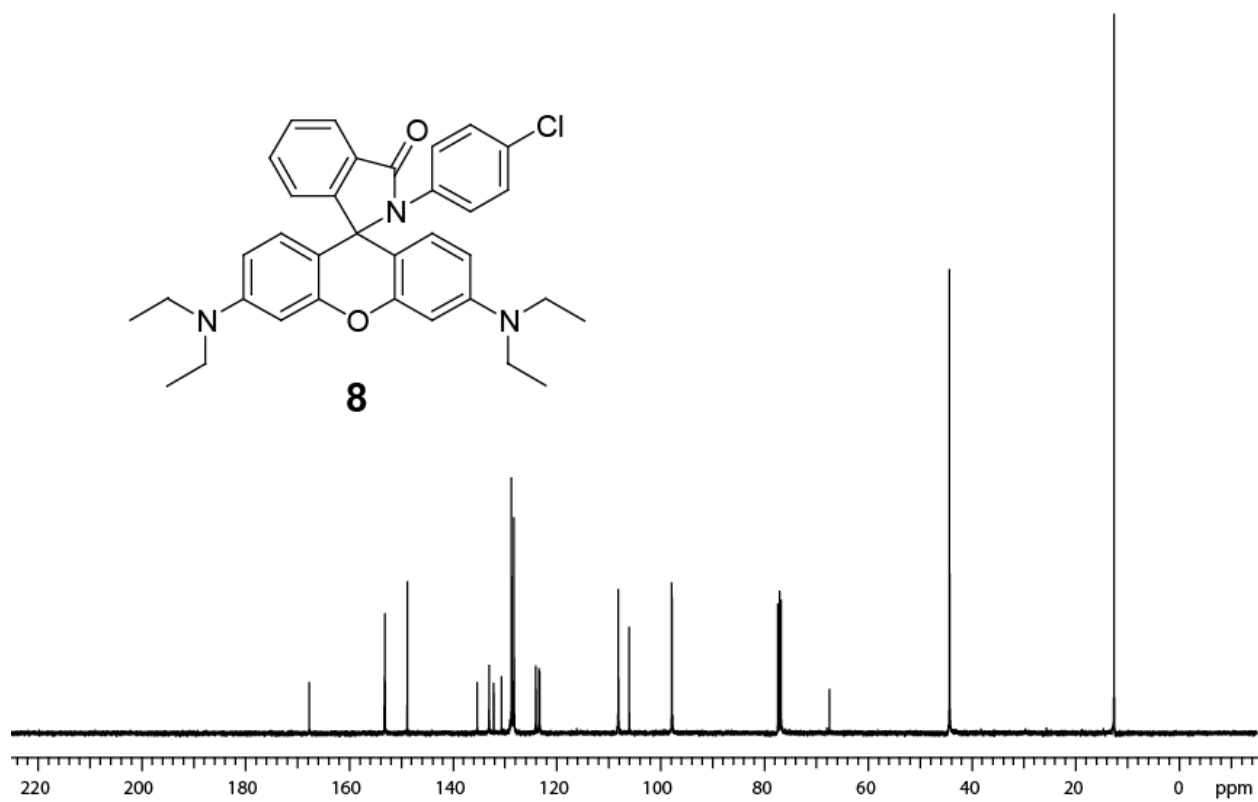
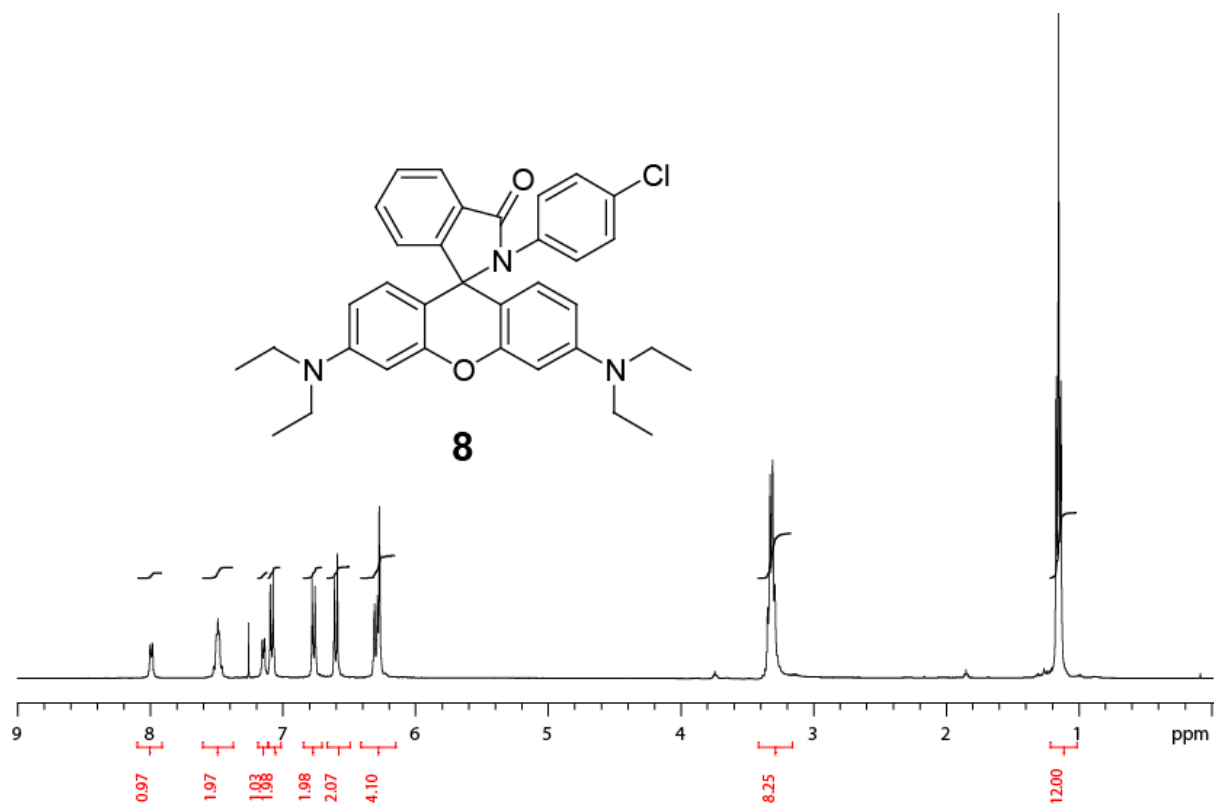


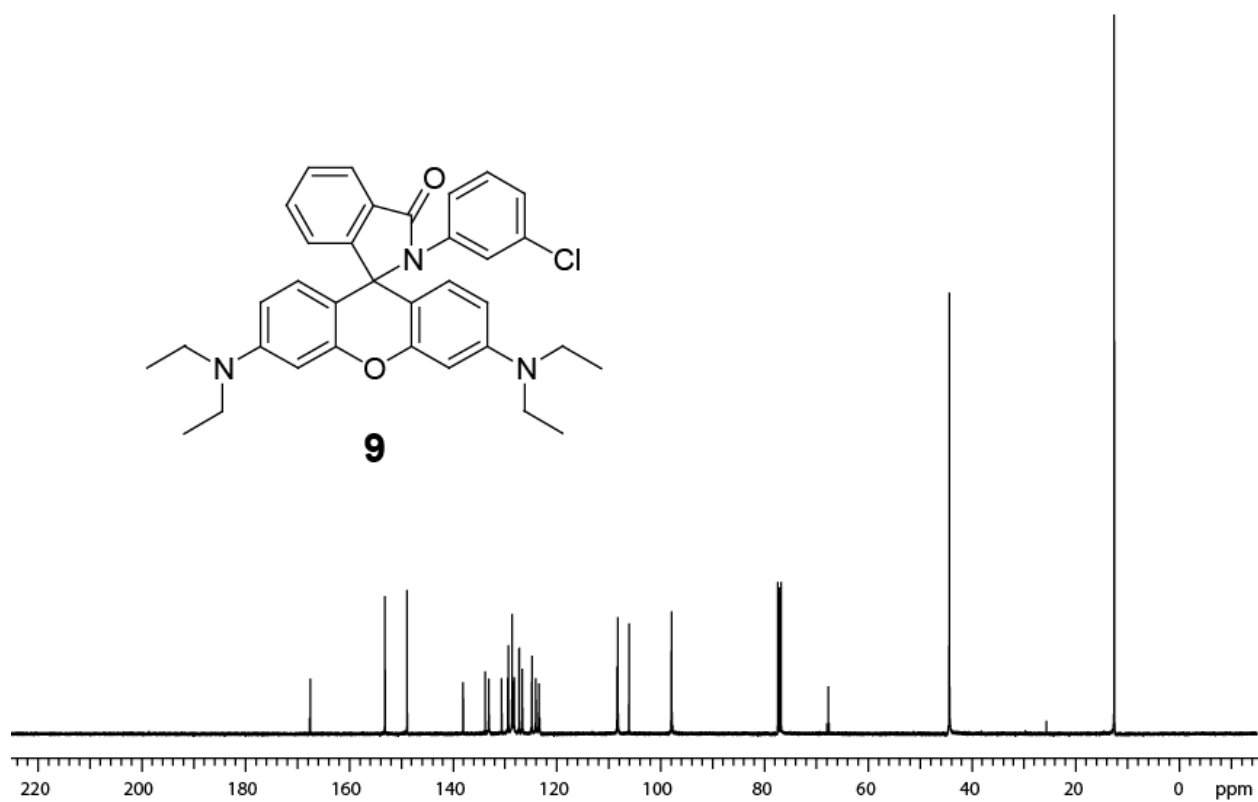
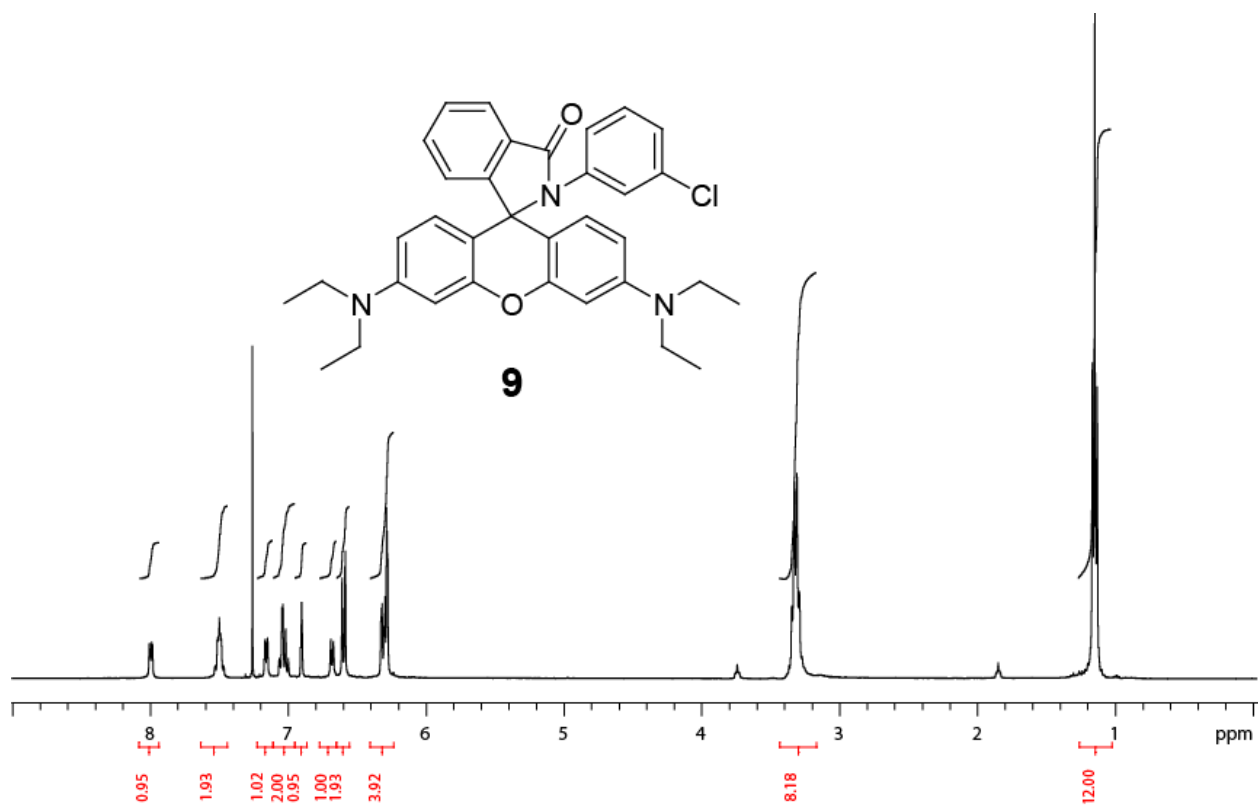


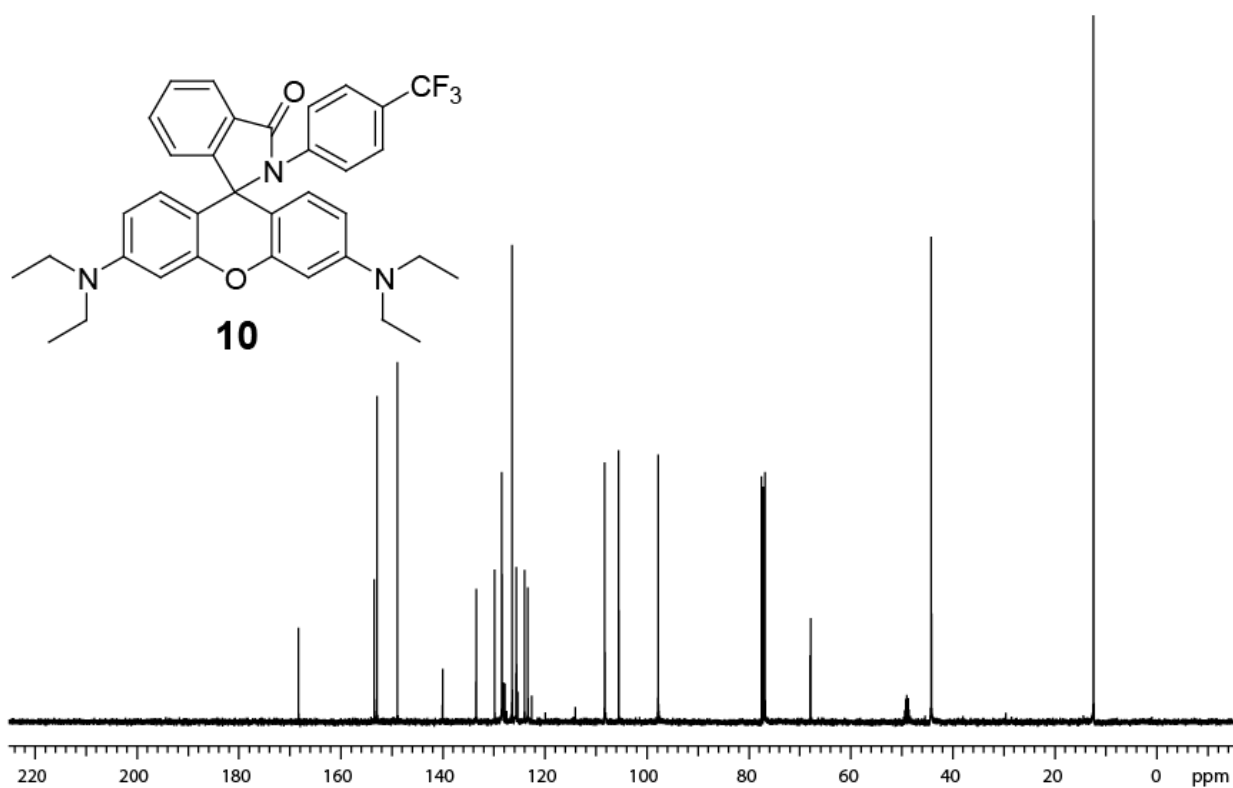
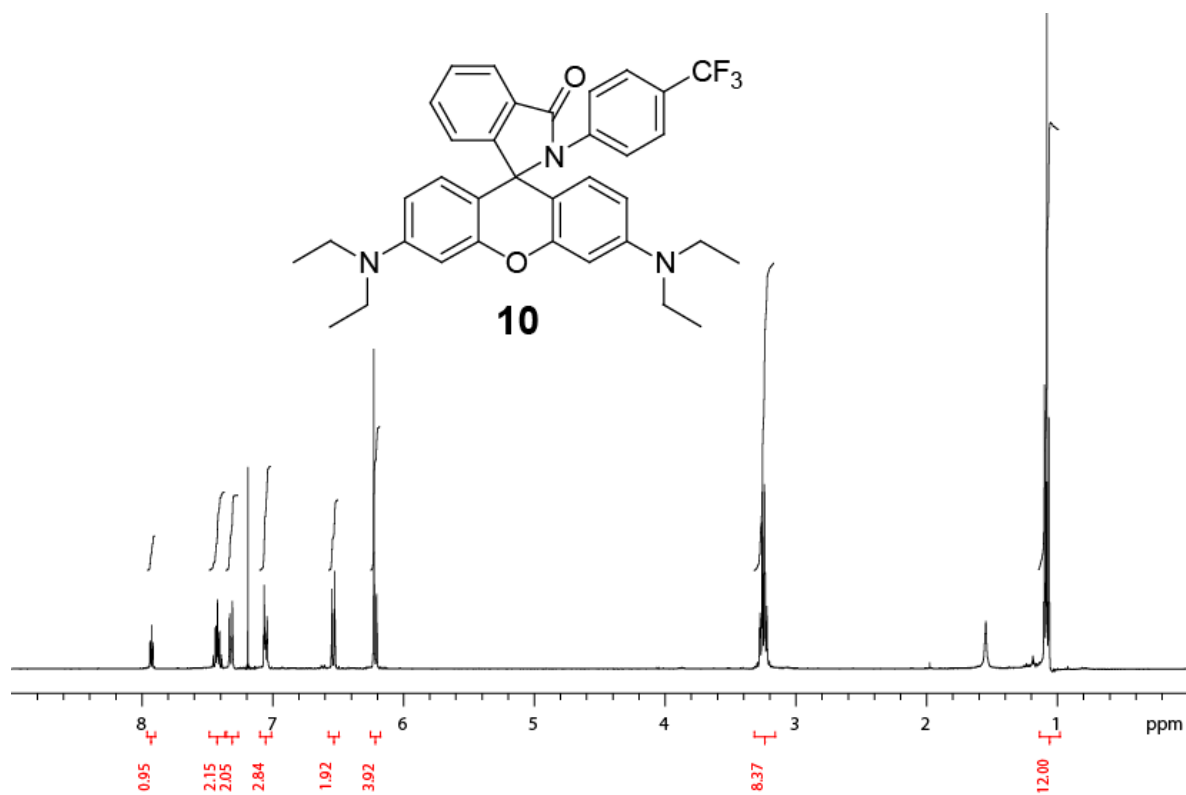


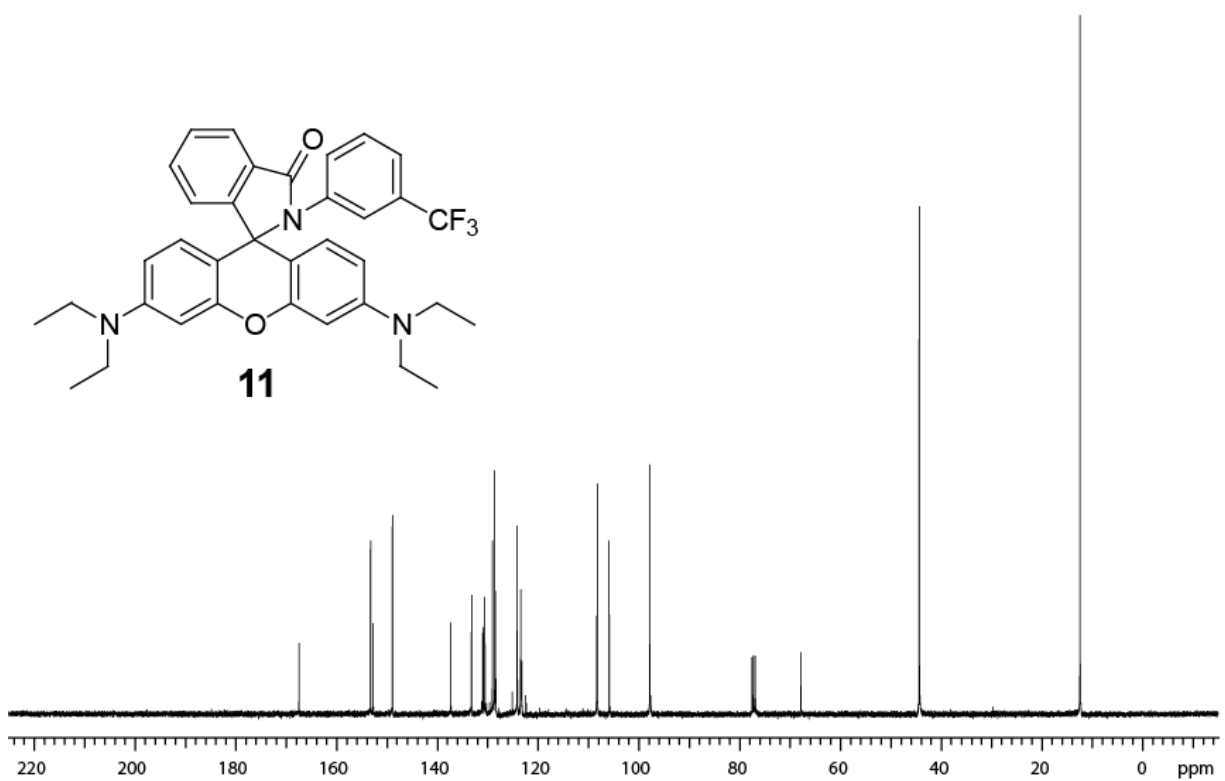
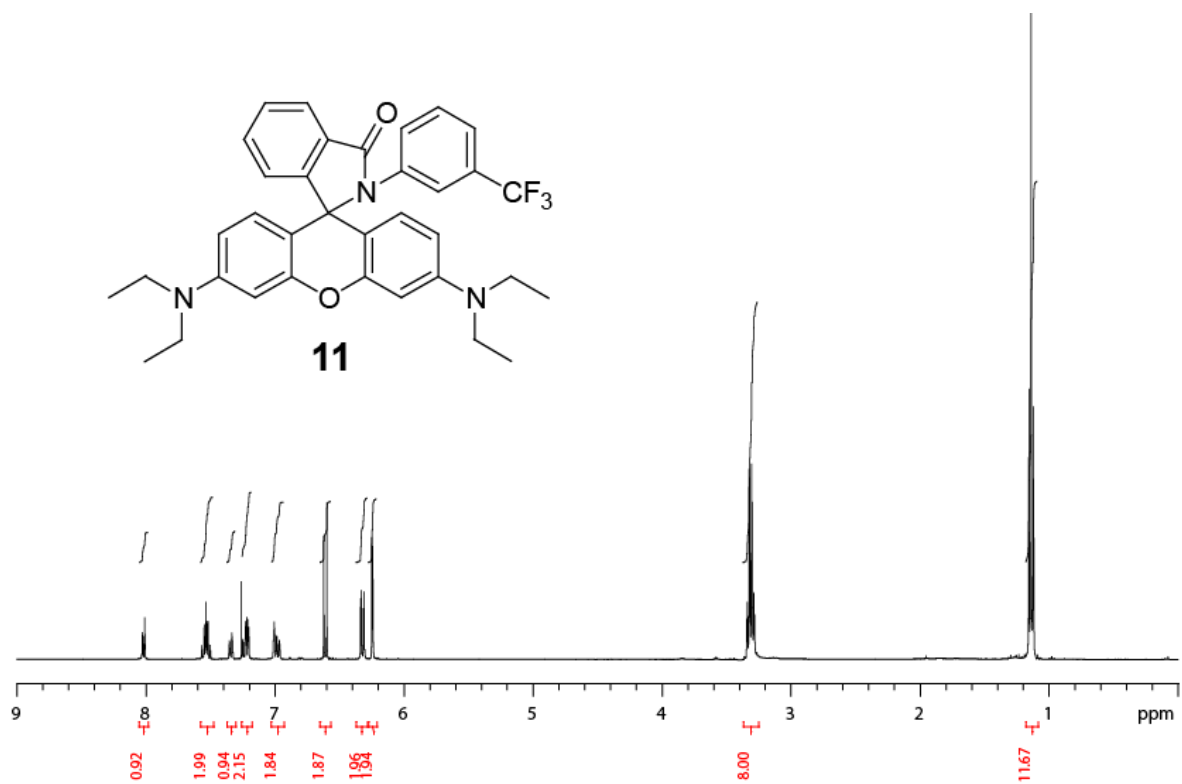


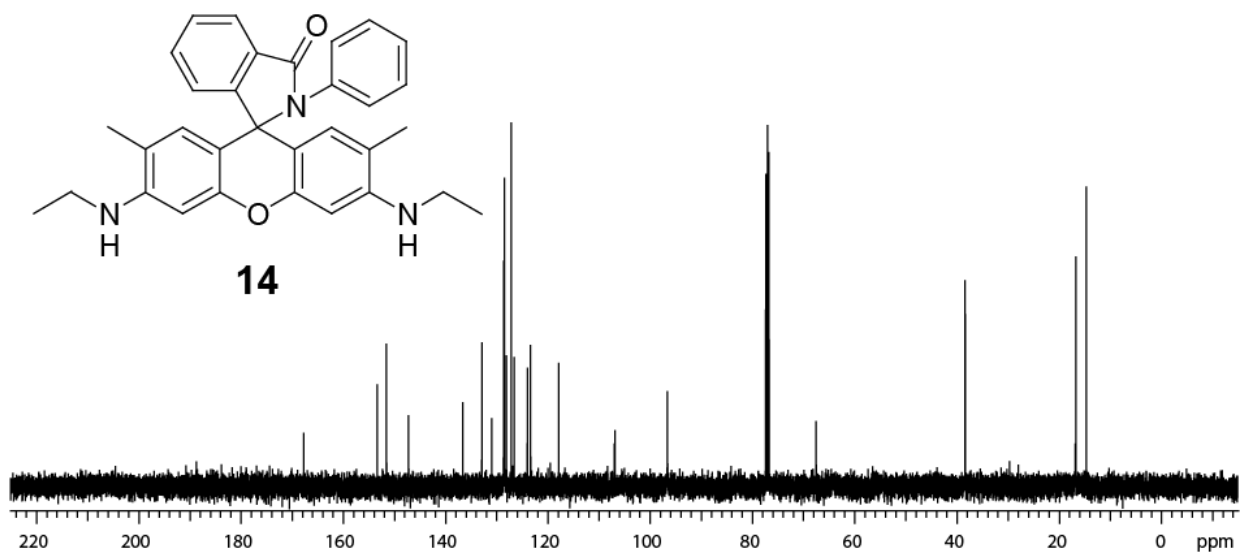
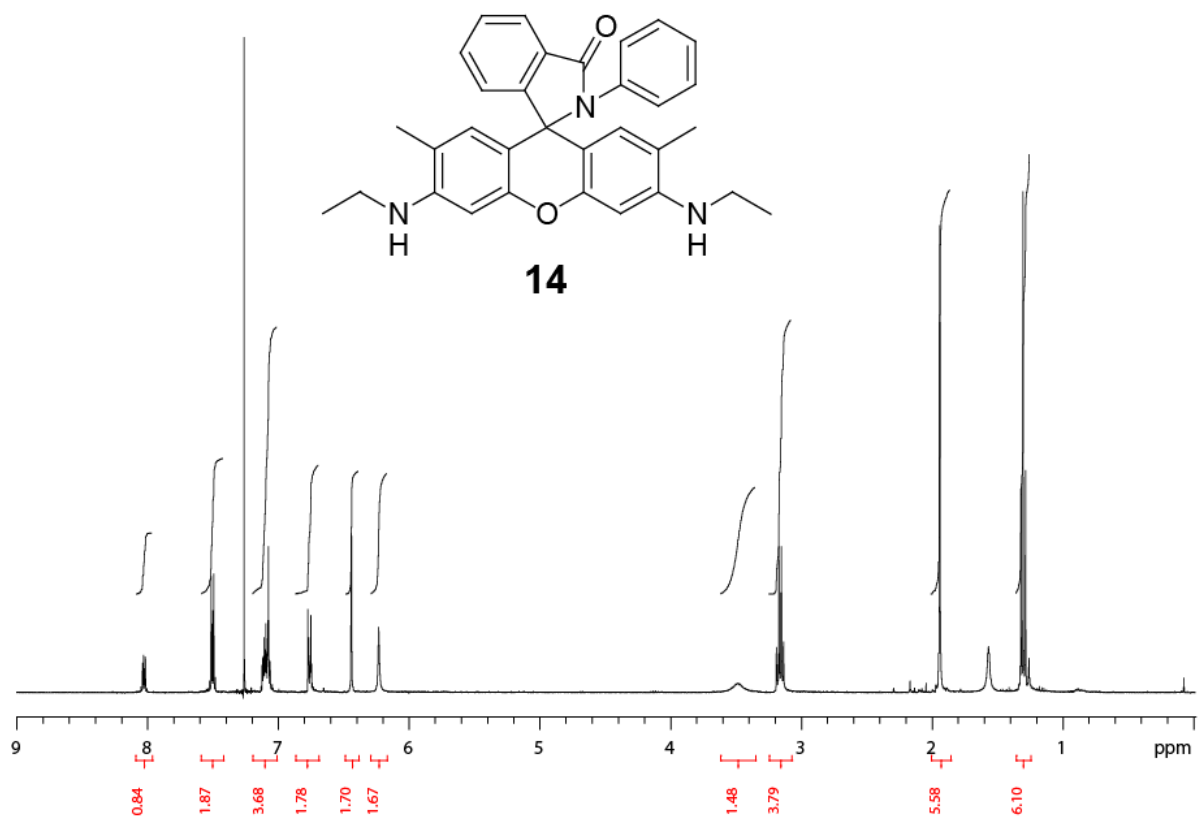


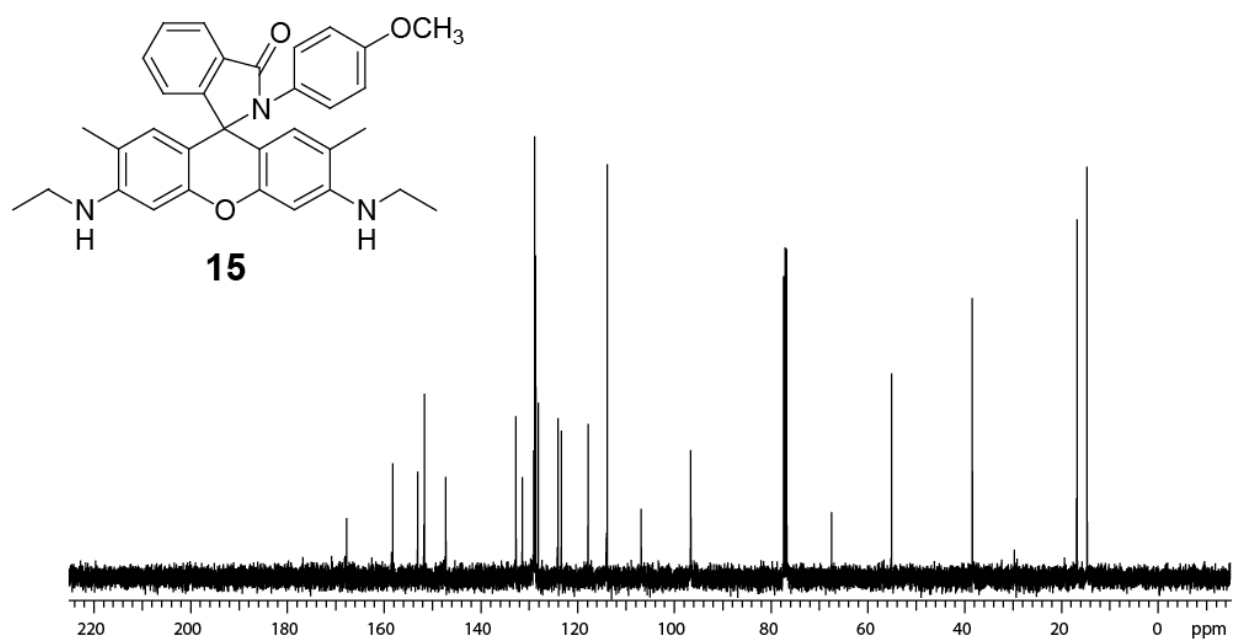
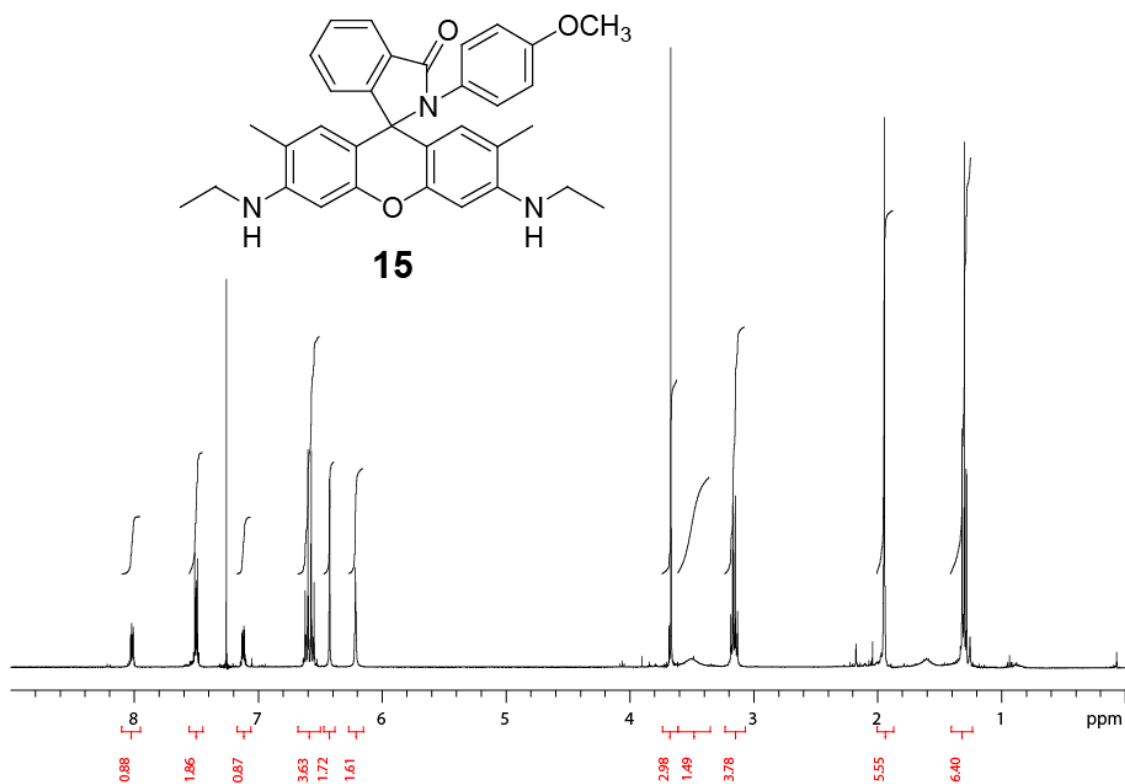


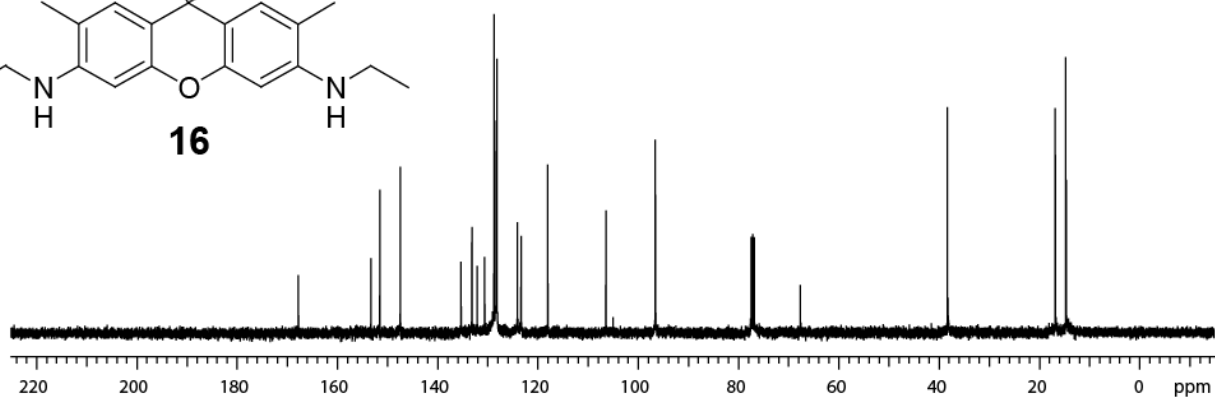
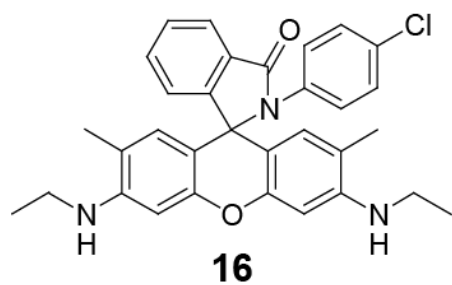
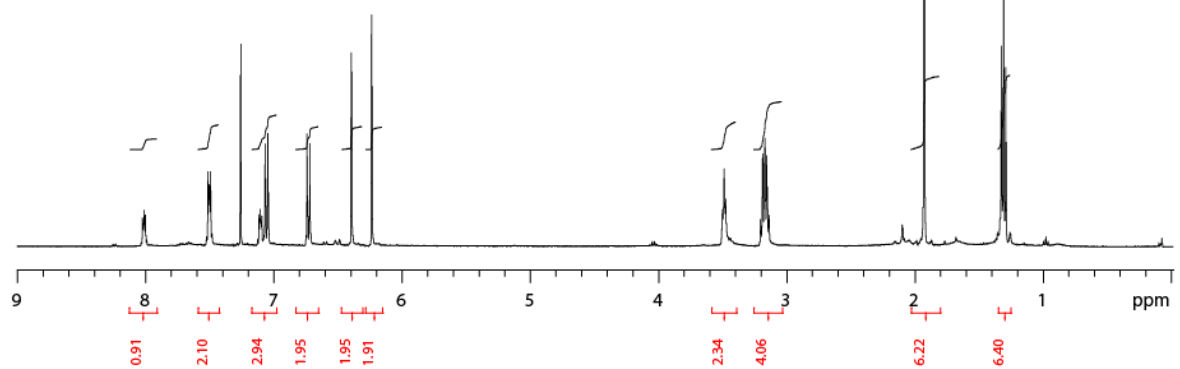
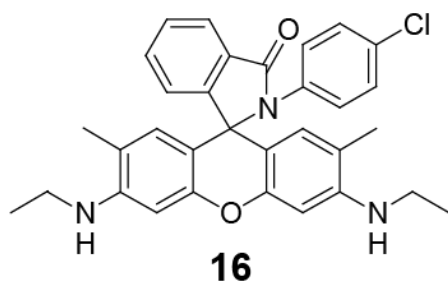


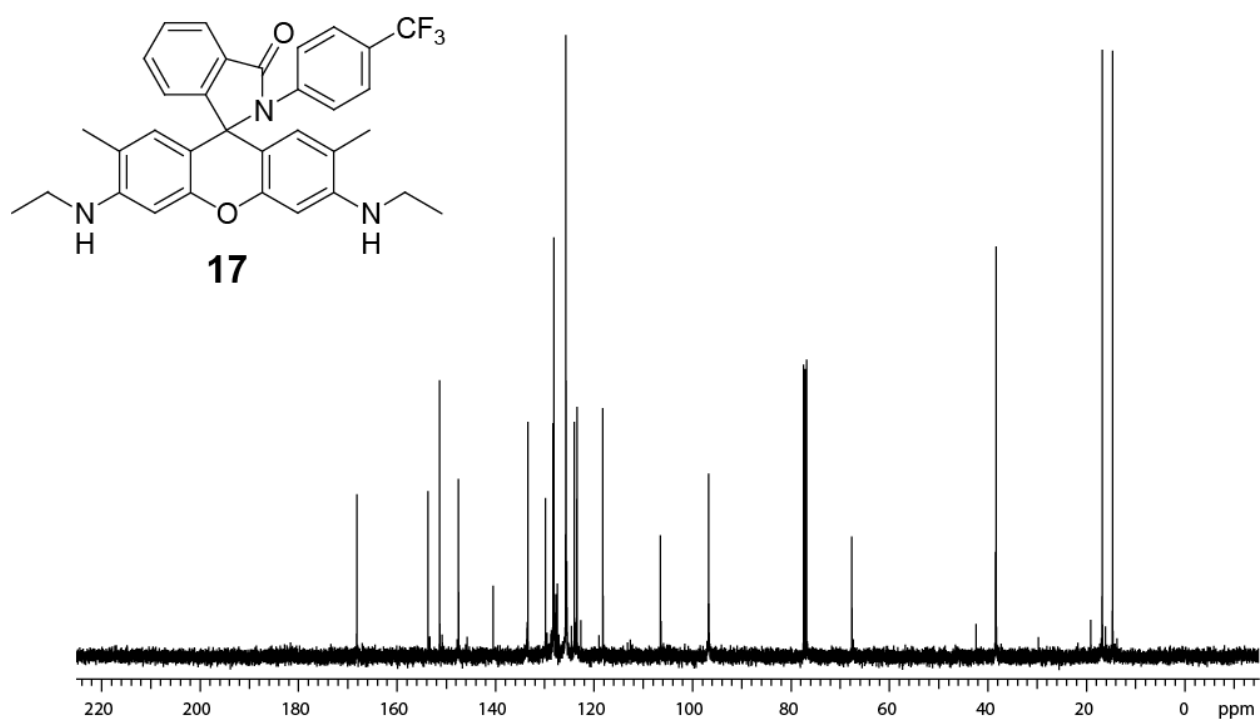
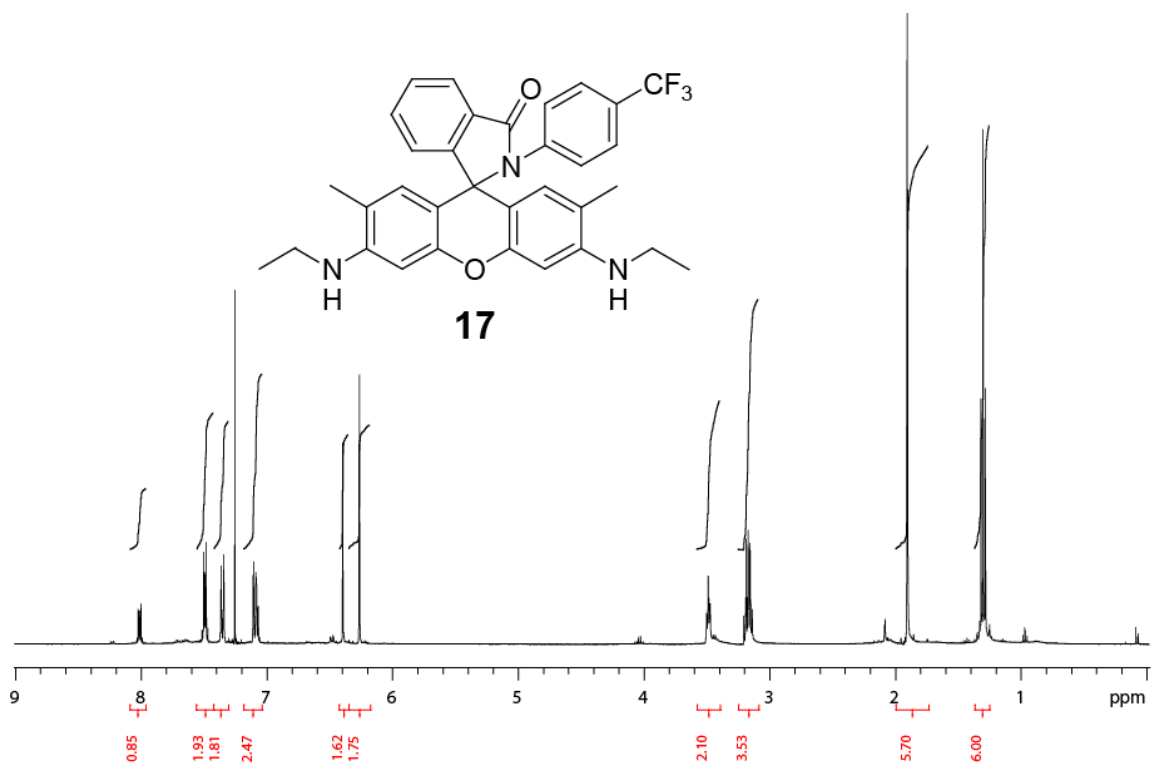


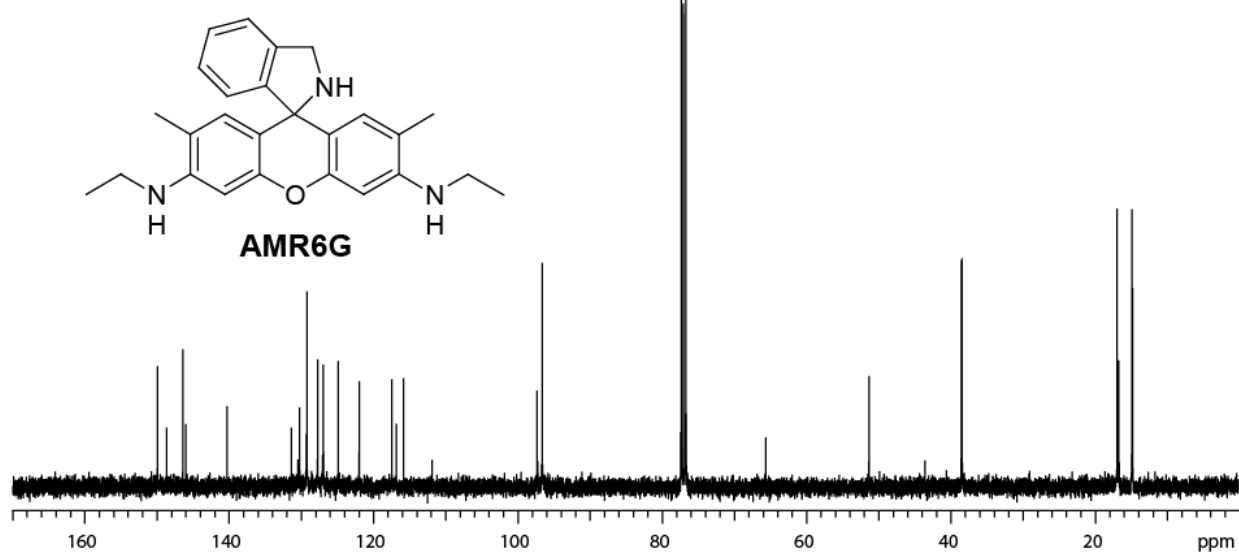
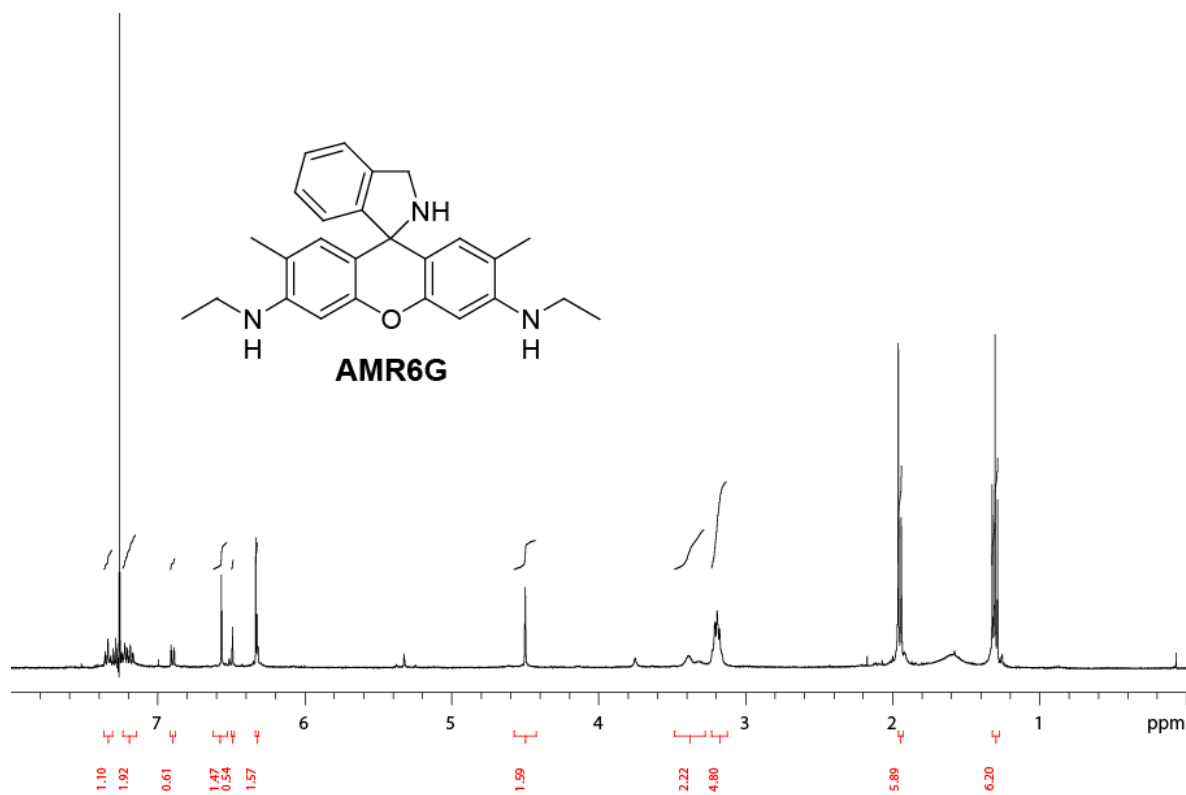












File: exp

Pulse Sequence: DEPT

