

Supporting Information

Paper Title: Co-administration of dual-targeting nanoparticles with penetration enhancement peptide for anti-glioblastoma therapy

Authors: Deyu Miao,[†] Mengyin Jiang, Zhongyang Liu, Guangzhi Gu, Quanyin Hu, Ting Kang, Qingxiang Song, Lei Yao, Wei Li, Xiaoling Gao, Mingjiang Sun, Jun Chen

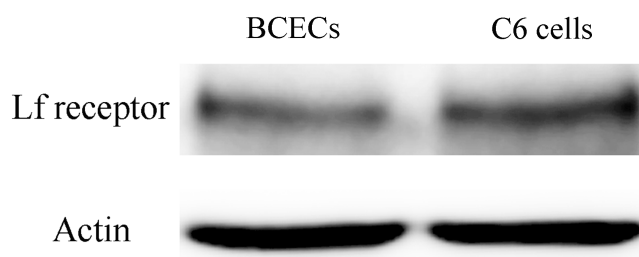


Figure S1. Expression of lactoferrin receptor (Lf receptor) on both BCECs and C6 glioma cells.

This information is available free of charge via the Internet at <http://pubs.acs.org/>.