

Supporting Information

Electron Paramagnetic Resonance Investigation of Charge Transfer in $\text{TiO}_2(\text{B})/\text{Anatase}$ and $\text{N-TiO}_2(\text{B})/\text{Anatase}$ Mixed-Phase Nanowires: The Relative Valence and Conduction Band Edges in the Two Phases

Hsin-Hsi Lo,[†] Neeruganti O. Gopal,^{†#} Shiann-Cherng Sheu,[‡] and Shyue-Chu Ke*,[†]

[†]Physics Department, National Dong Hwa University, Hualien, Taiwan 97401

[‡]Department of Occupational Safety and Health, Chang Jung Christian University, Tainan, Taiwan 711

E-mail: ke@mail.ndhu.edu.tw

Supporting Figures

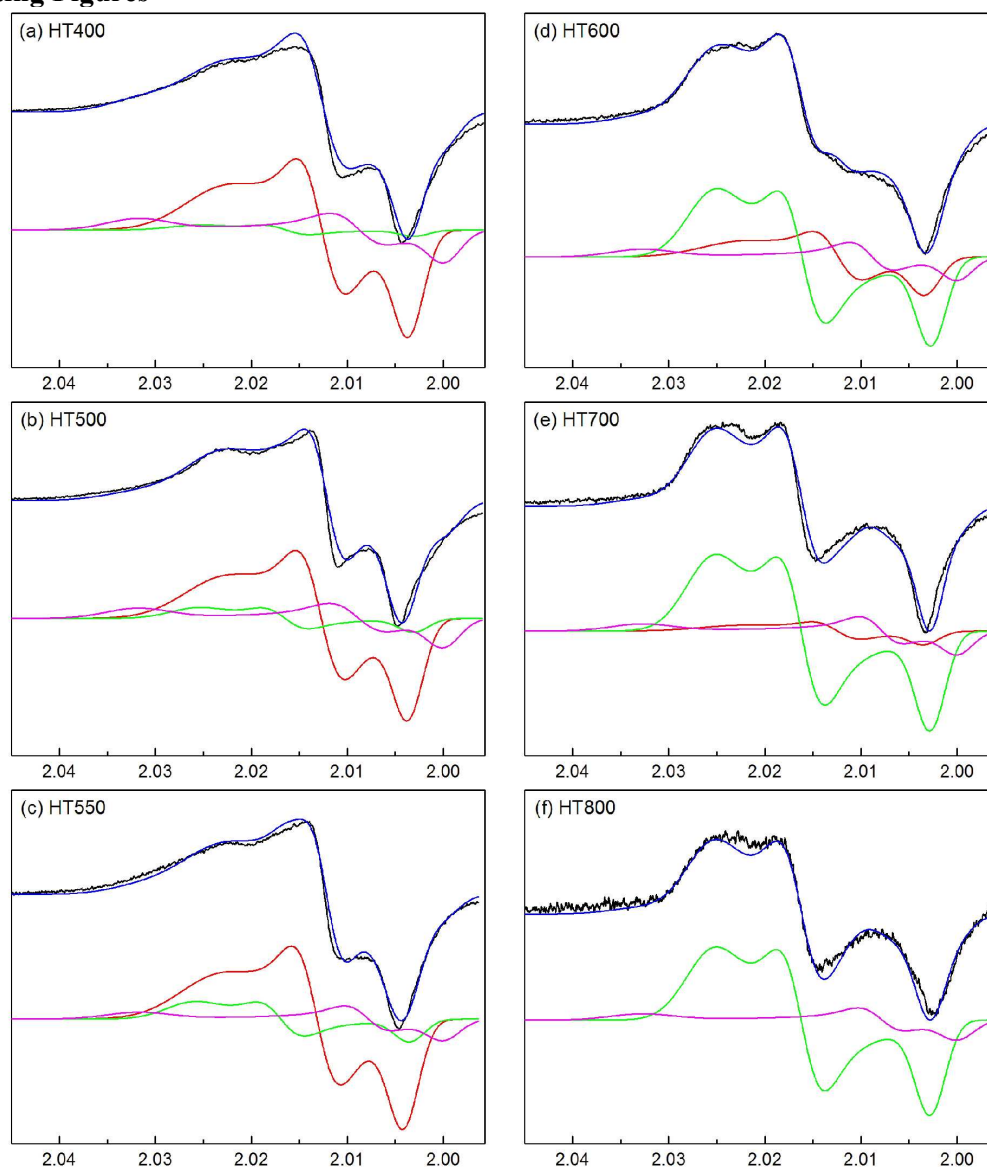


Figure S1. Deconvolutions of EPR experimental spectra (black) at $g > 1.995$ into three components: Signal B (red), Signal C (green), Signal D (magenta). Weighted sum (blue) of signals B, C, and D.

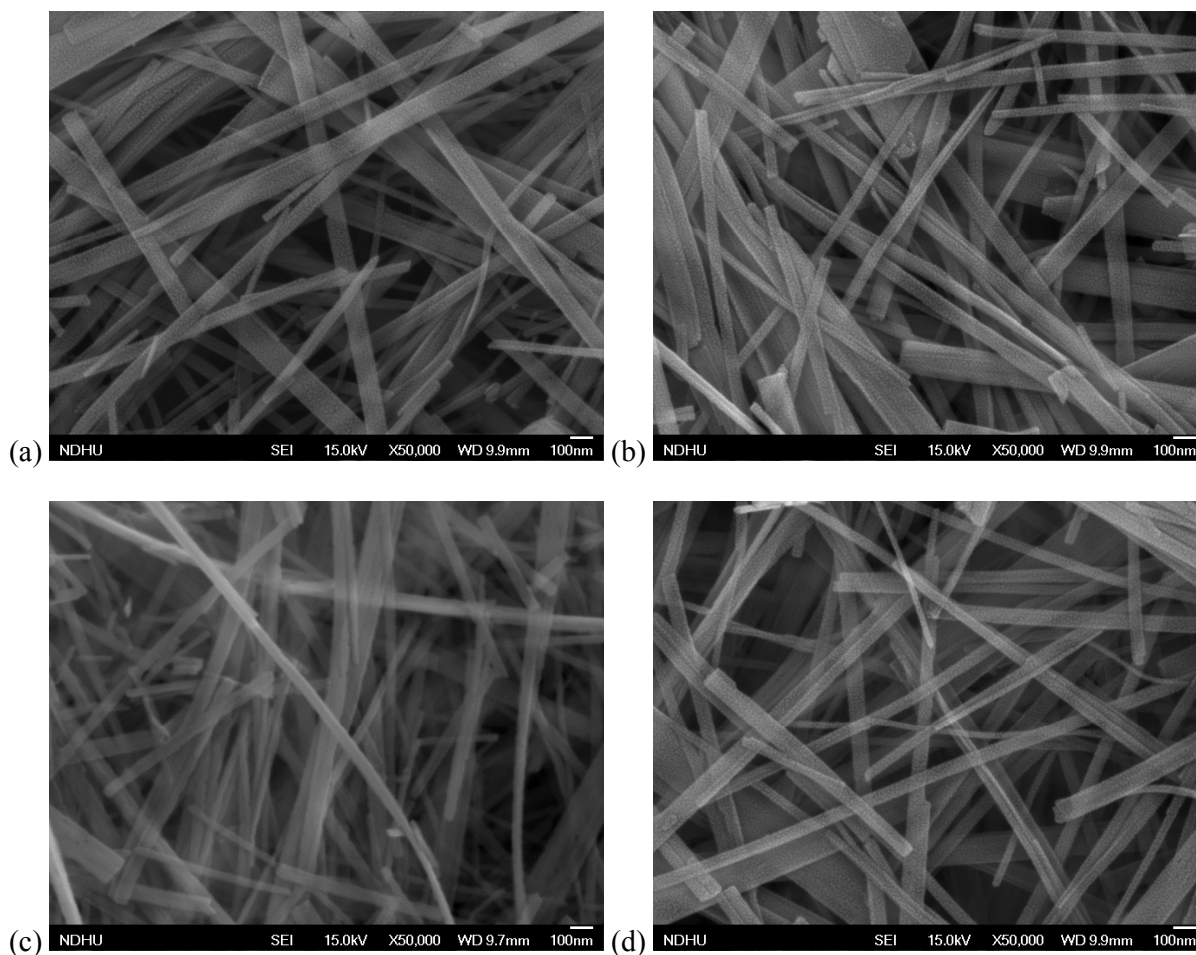


Figure S2. Field emission scanning electron microscopy images of nitrogen doped (a) NHT-NW, (b) NHT400, (c) NHT500 and (d) NHT550.

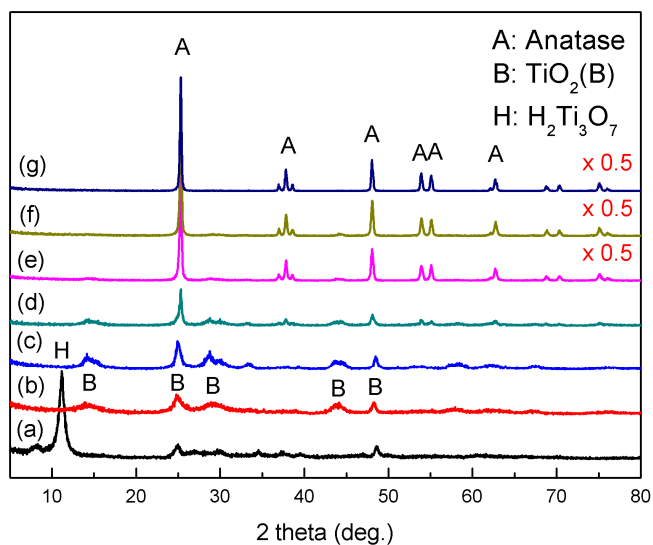


Figure S3. XRD patterns of (a) NHT-NW, (b) NHT400, (c) NHT500, (d) NHT550, (e) NHT600, (f) NHT700, and (g) NHT800.