

## Supporting Information for

### Siting algae cultivation facilities for biofuel production in the United States- tradeoffs

#### between growth rate, site constructability, water availability, and infrastructure

Erik R. Venteris, Robert C. McBride, Andre M. Coleman, Richard L. Skaggs, and Mark S.

Wigmosta

This Supporting information document contains two figures with captions.

#### FIGURE CAPTIONS

**Figure SI-1** A) Soil  $K_{sat}$  predicted or from the STATGO database for soils under natural conditions. B)  $K_{sat}$  estimates for compacted soils, mapped showing typical thresholds for landfills, the suggested criteria for algae cultivation, and for animal lagoons. Soils with plasticity indices (PI) less than 10 and % sand > 30 have low potential for  $K_{sat}$  benefits from compaction.

**Figure SI-2** Maps showing the infrastructure buffers used for screening. A) Rail lines, B) Nature gas lines and receiving/ delivery stations, C) Electricity delivery (powerlines and substations), D) Oil transportation pipelines.



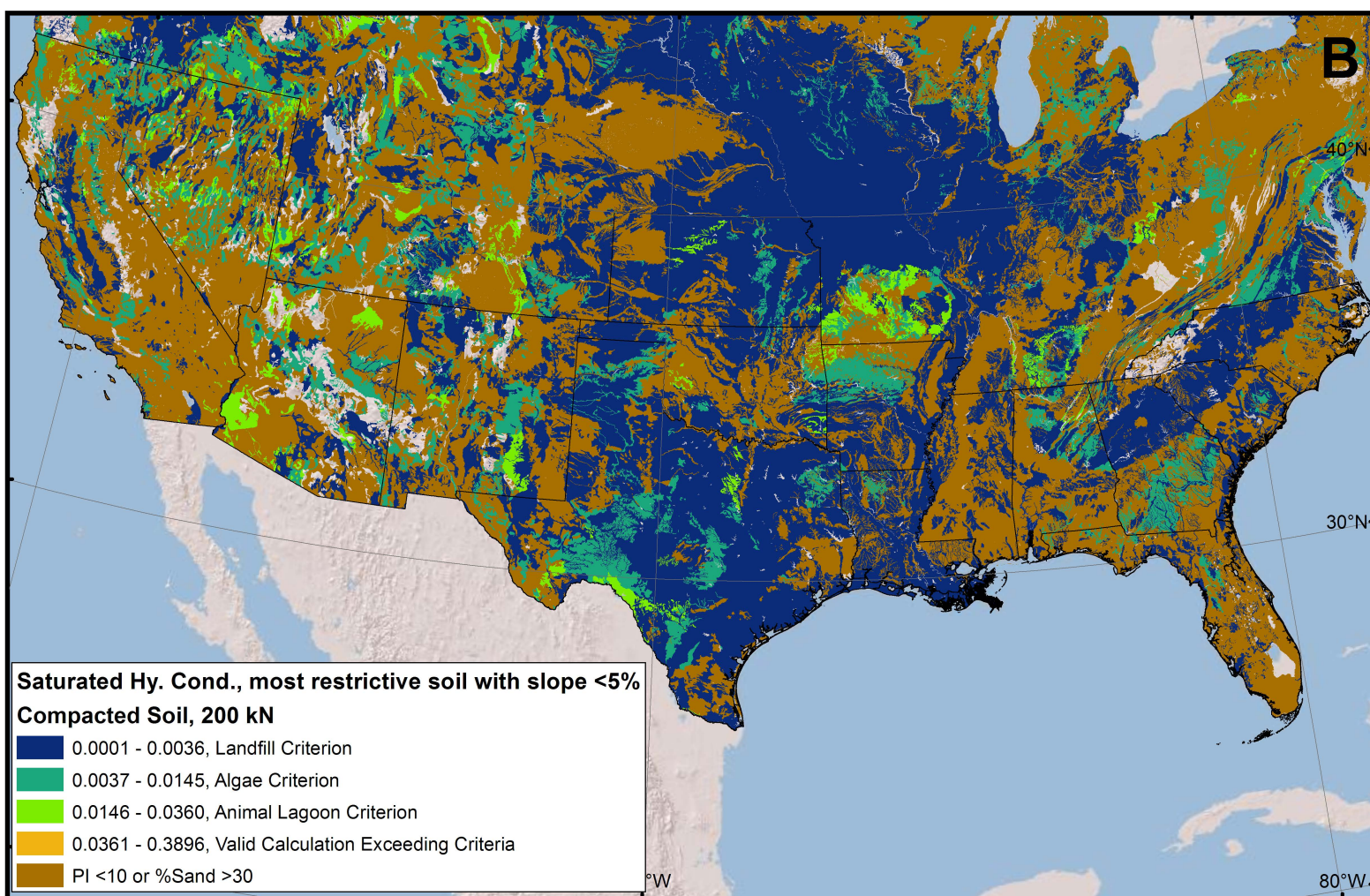
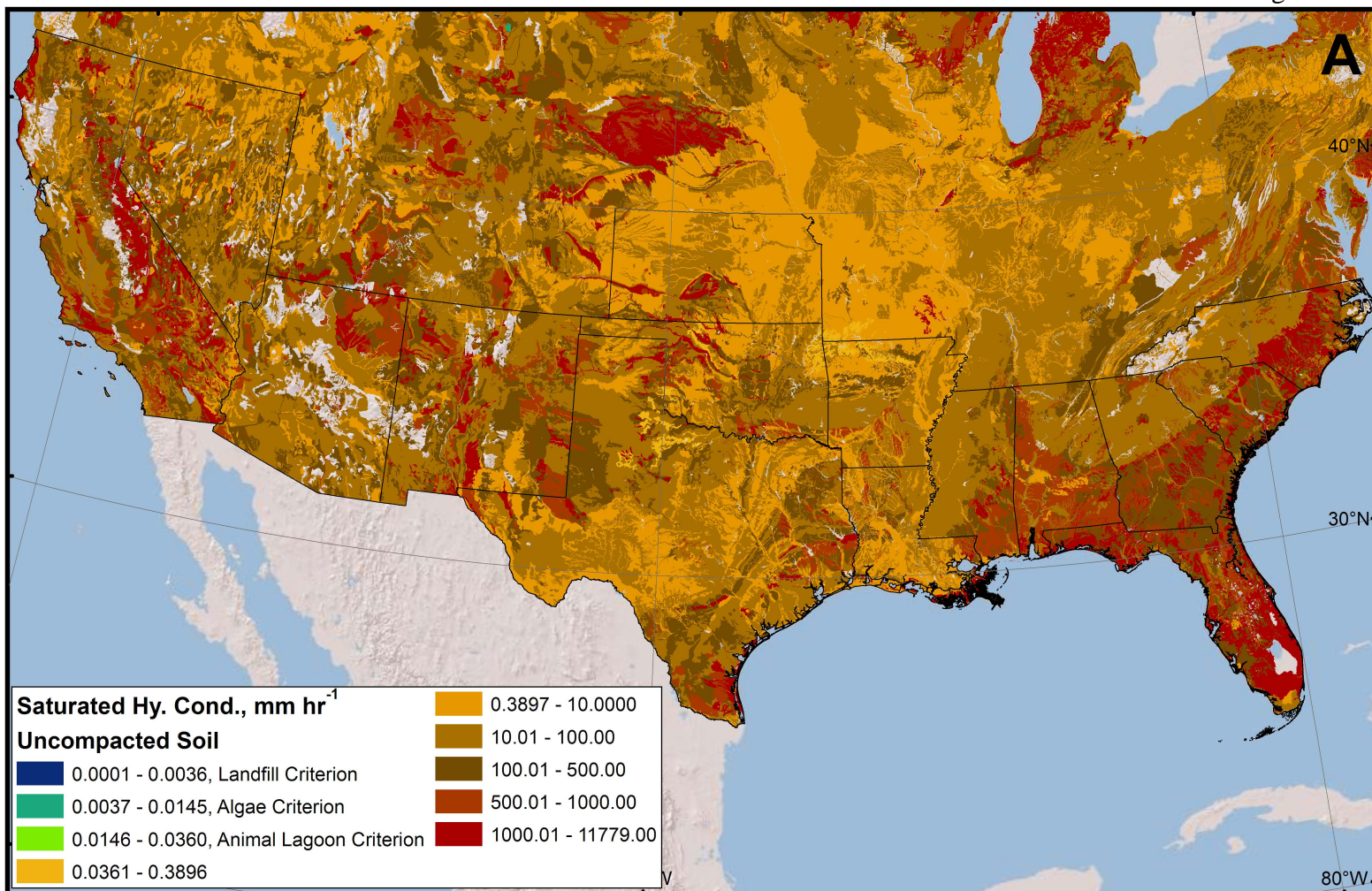




Figure SI-2

