

SUPPORTING INFORMATION

Magnetically Actuated Micropatterns for switchable wettability

Dirk-M. Drotler⁽¹⁾, Peter Blümner⁽²⁾, Periklis Papadopoulos⁽¹⁾, Aránzazu del Campo^{(1)*}

⁽¹⁾ Max-Planck-Institut für Polymerforschung, Ackermannweg 10, 55128 Mainz, Germany

*contact: delcampo@mpip-mainz.mpg.de, Tel +49 6131 379563

⁽²⁾ Institute of Physics, University Mainz, Staudingerweg 7, 55099 Mainz, Germany

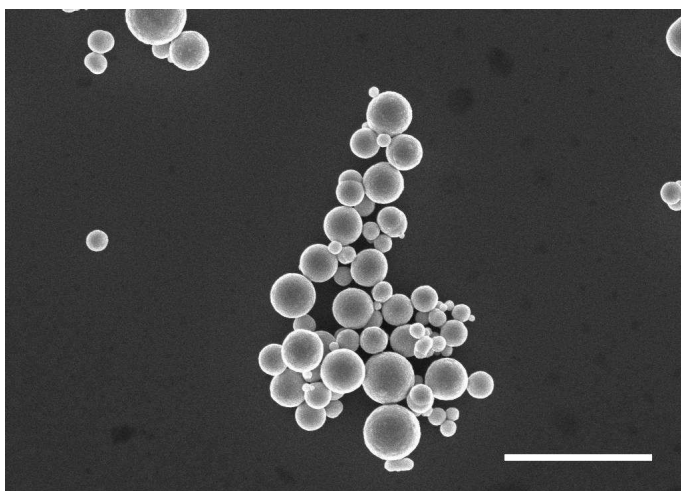


Figure SI-1: SEM image of spherical CIP. Scale bars correspond to 4 μ m.

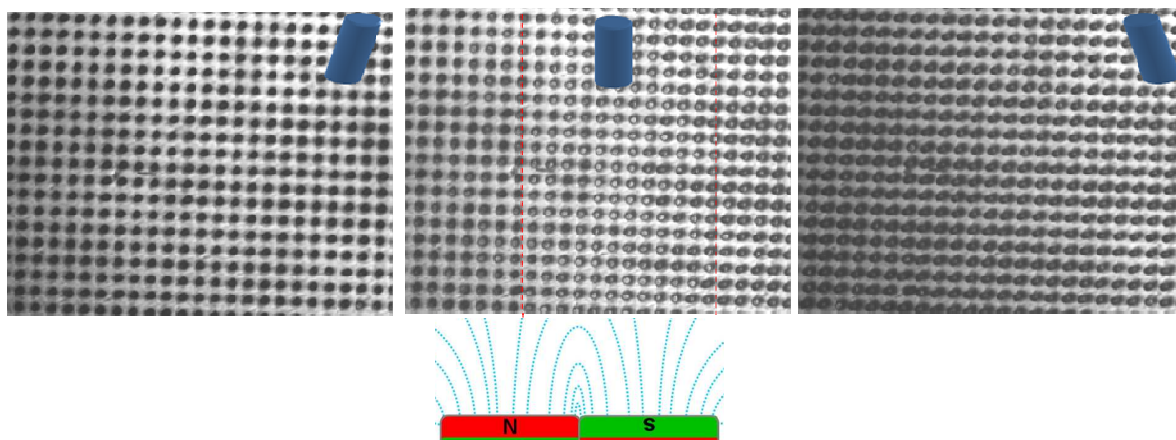


Figure SI-2: Propagation of tilting through the pattern (“la ola”) by moving two joint magnets in a particular direction. The magnetic micropillars in the center of the pattern (between two red lines) are tilted to the right, in upright position, or tilted to the left when the magnet is moved from the left to the right.