

Supporting Information

A novel protein binder for affinity purification of human immunoglobulin antibodies

Woosung Heu, Jung-Min Choi, Joong-Jae Lee, Sukyo Jeong, and Hak-Sung
Kim^{*}

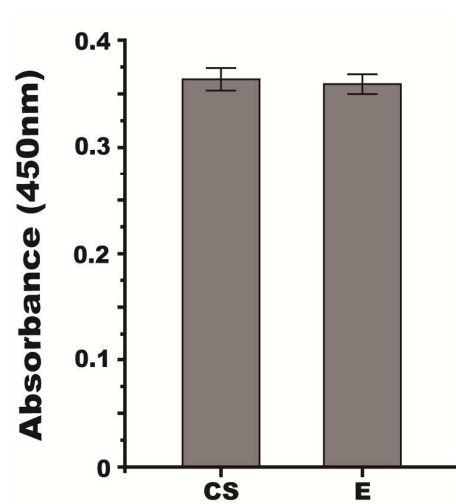


Figure S1. ELISA of purified antibodies from a CHO cell-cultivated medium using a repebody resin. CS, cell culture supernatant; E, eluted fraction. Experiments were carried out in quadruple.

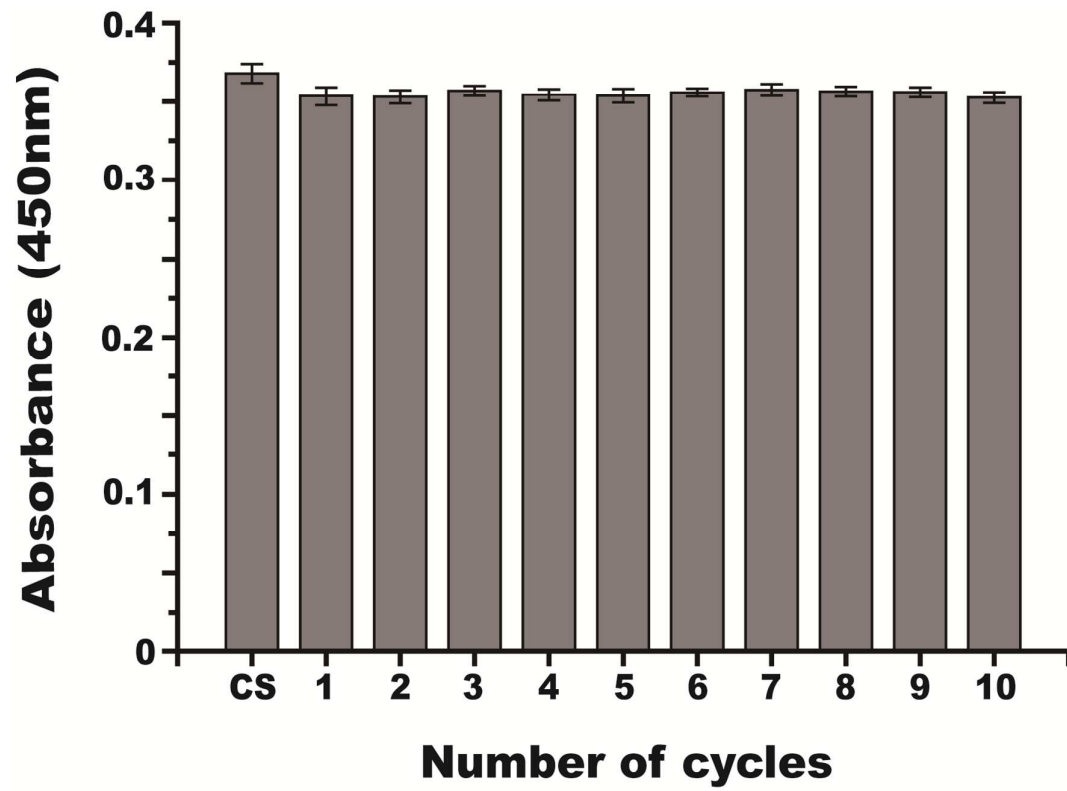


Figure S2. ELISA of purified antibodies by a repebody resin after repeated use. The numbers indicate the number of repetitions. CS, cell culture supernatant. Experiments were carried out in quadruple.

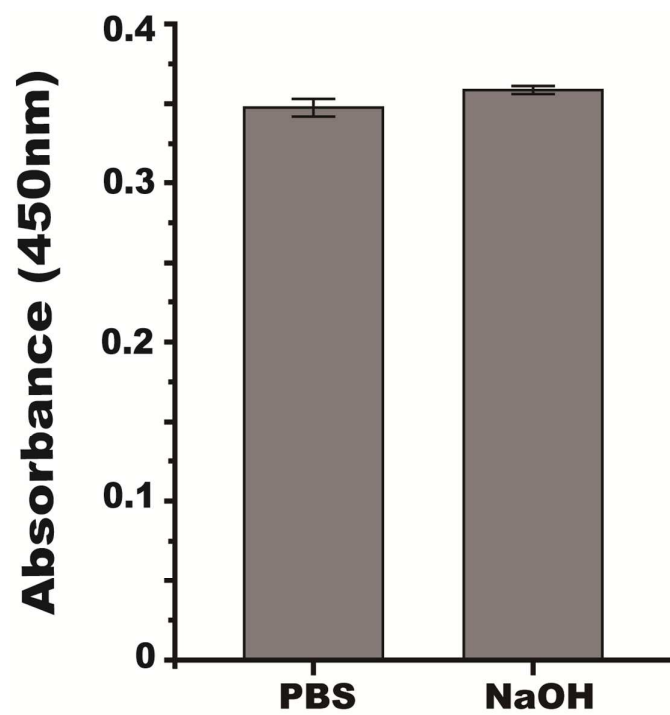


Figure S3. ELISA of purified antibodies using a repebody resin after treated with 0.5 M NaOH for 15 days. Experiments were carried out in quadruple.