

Figure 1: **Best models generated by PEP-FOLD2 and Rosetta.** Green: experimental conformation. Cyan: PEP-FOLD2. Magenta: Rosetta. From top to bottom, left to right, best models generated for 2gdl, 2ovc, 2kya, 1by0, 1yyb, 1lud and 1use. For some targets, all the experimental models are depicted, and the regions not in the rigid core are depicted using pale colors.

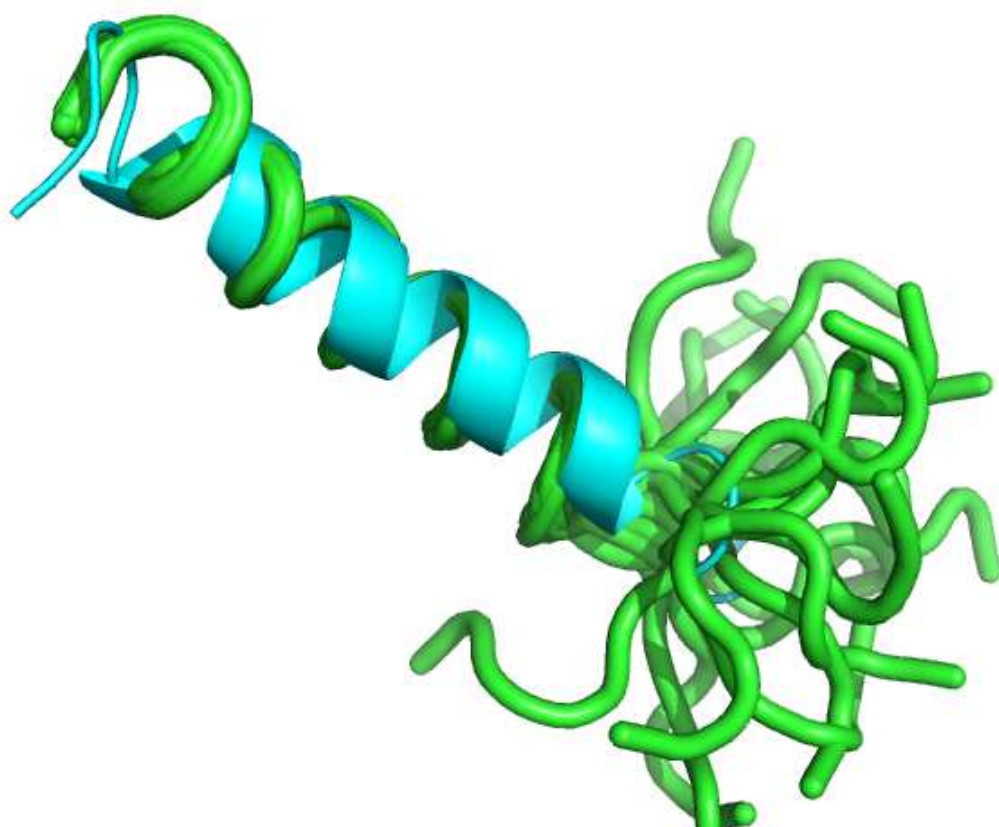


Figure 2: 1yyb best model generated using PEP-FOLD2 biased trajectories only. Green: experimental conformations. Cyan: PEP-FOLD2.