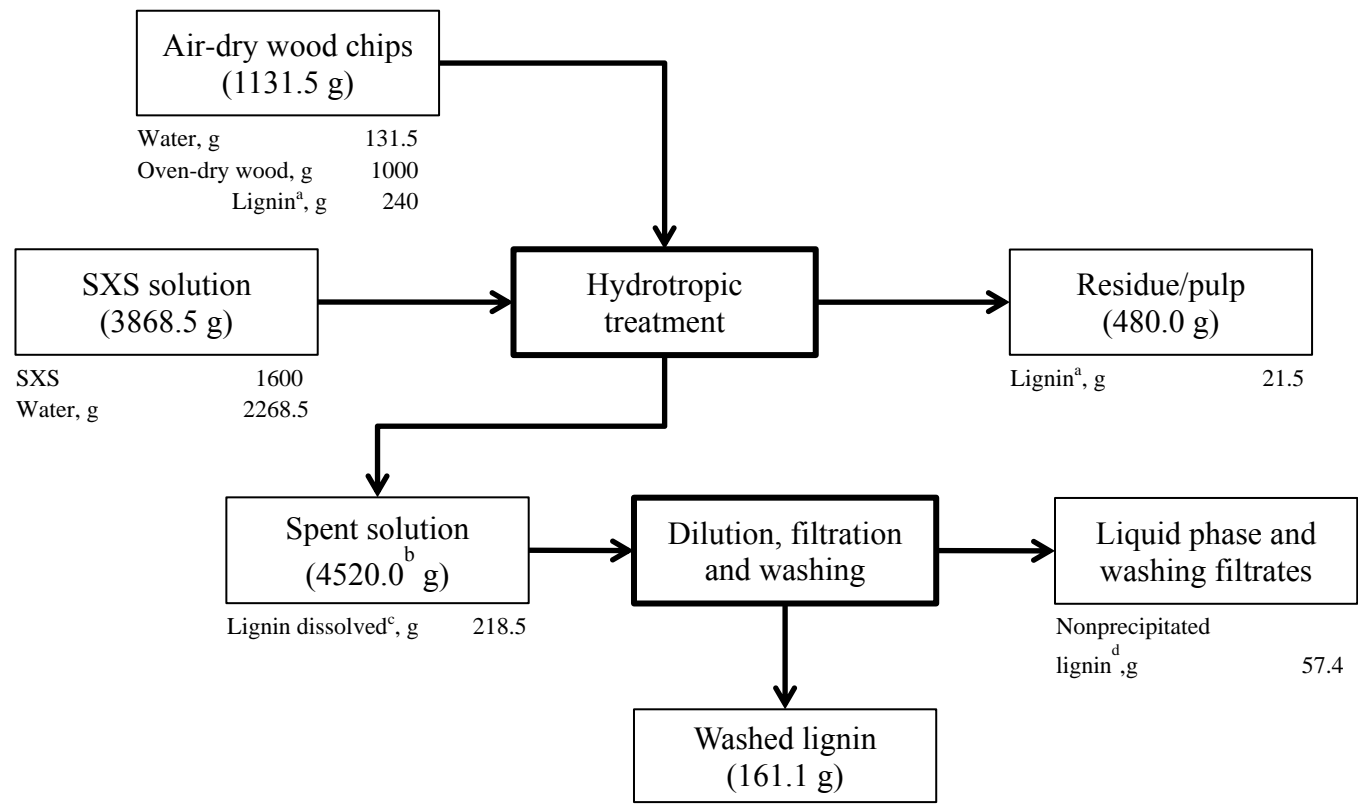
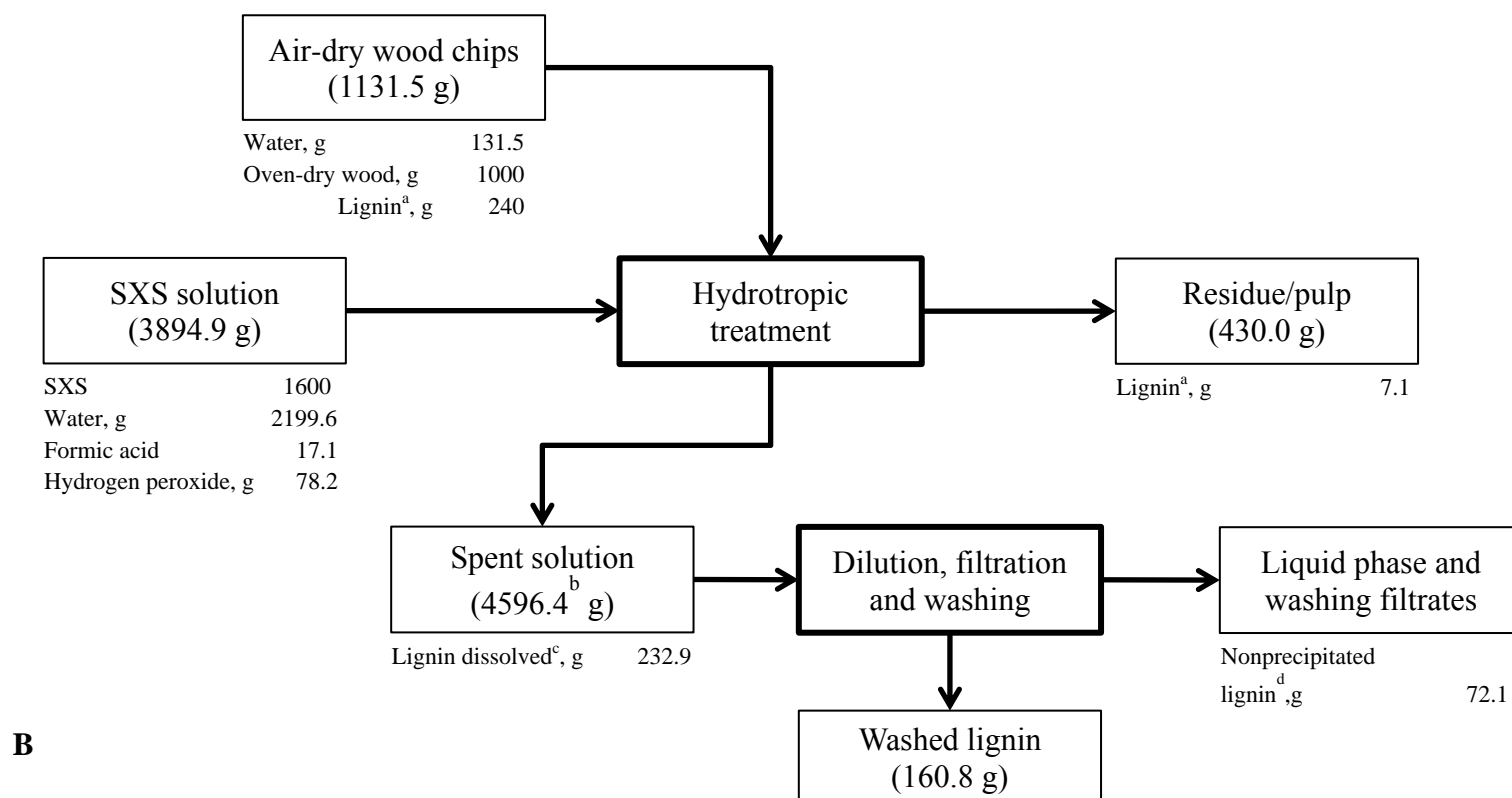


SUPPORTING INFORMATION



A



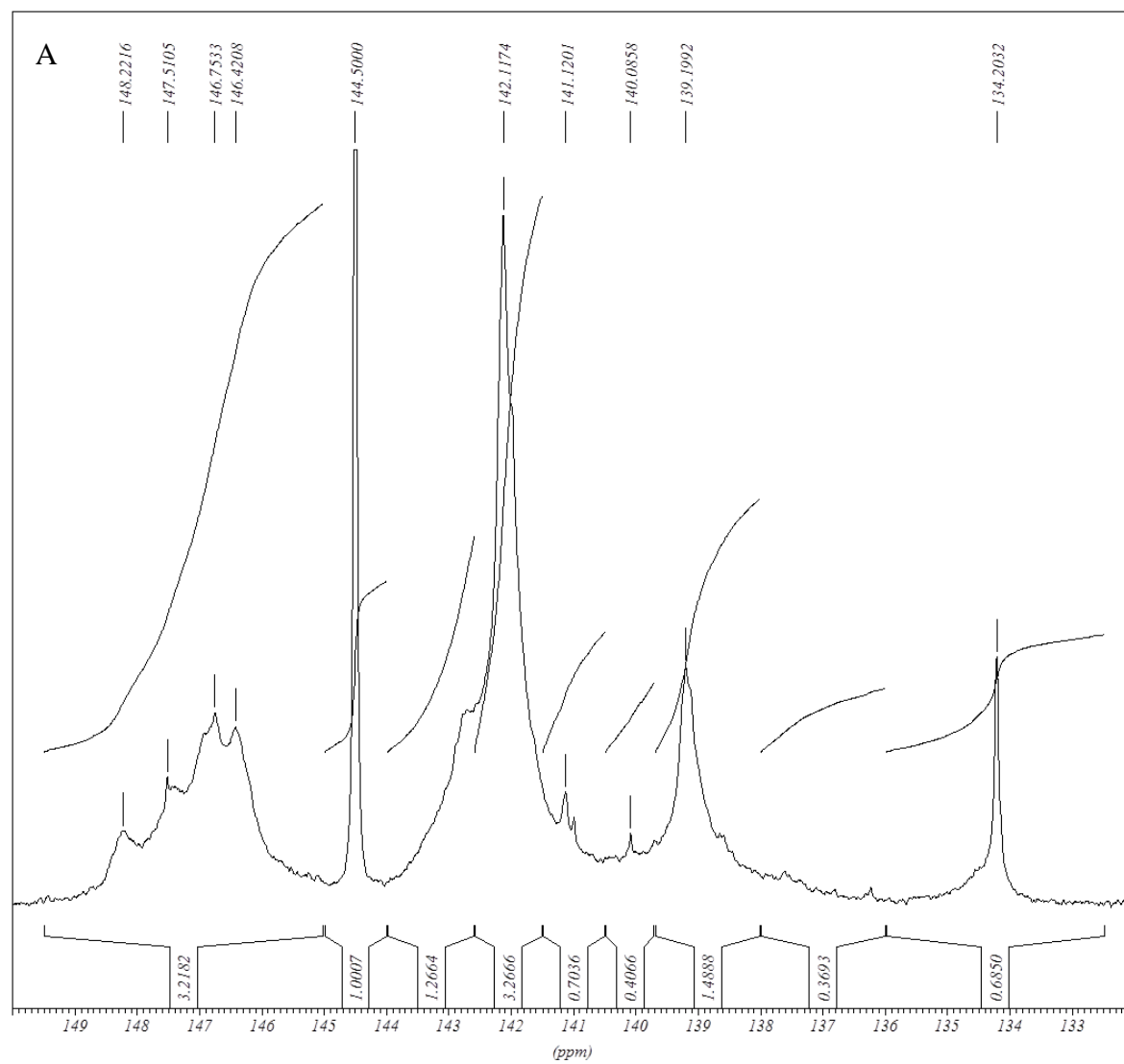
<sup>a</sup> Lignin contents in the birch wood and pulps were determined according to TAPPI T222 om-02 and TAPPI UM 250;

<sup>b</sup> The amount of spent solution was determined as a sum of dissolved wood, water in wood and hydrotropic solution

<sup>c</sup> Dissolved lignin was determined as a difference between lignin in wood and residual lignin in pulp

<sup>d</sup> Nonprecipitated lignin was calculated as a difference between dissolved lignin and precipitated lignin

Figure S1. Material balance of lignin: A) reference treatment, B) modified hydrotropic treatment



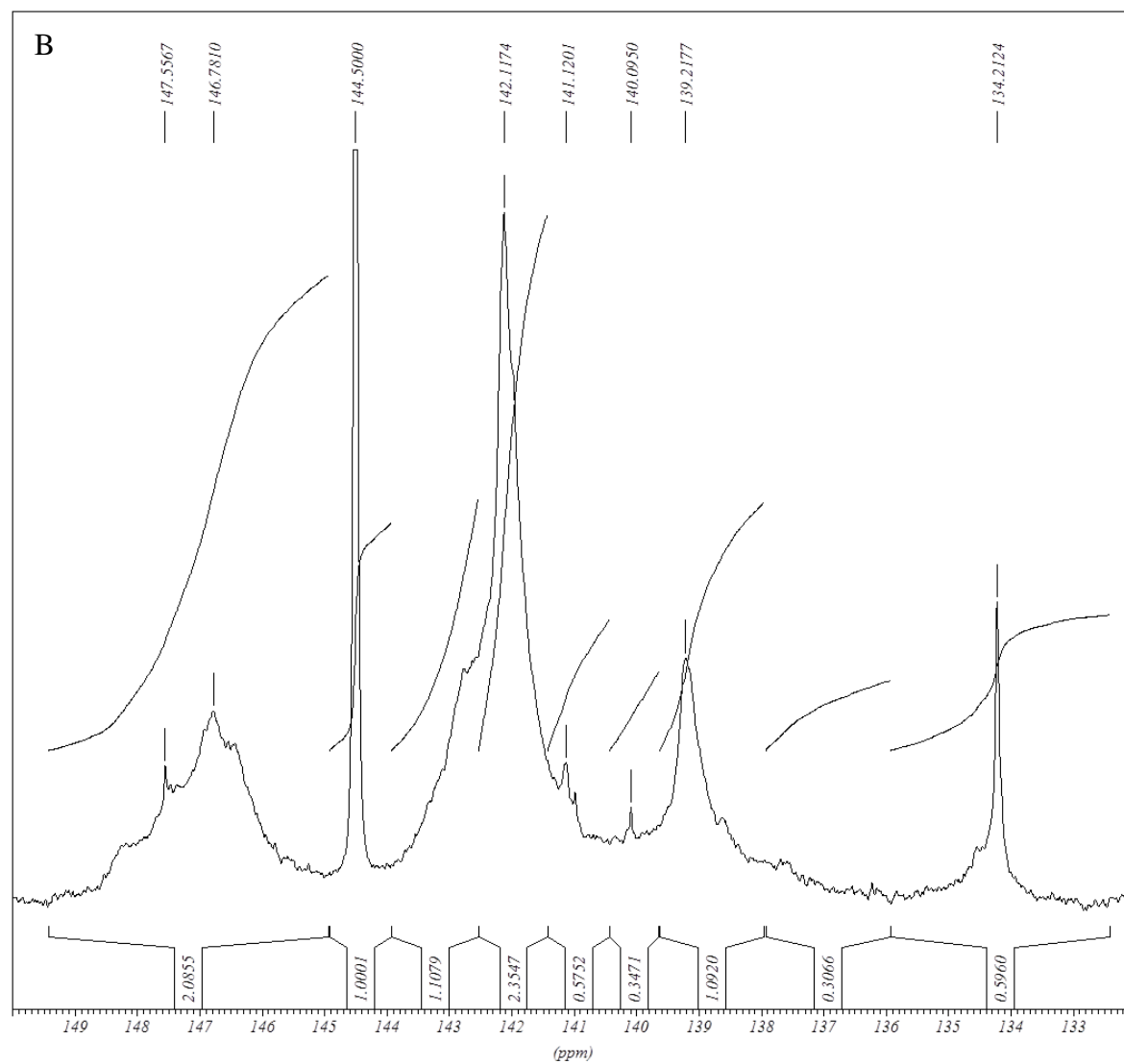


Figure S2.  $^{31}\text{P}$  NMR spectra: A) reference lignin, B) lignin from the modified hydrotropic process