

Supporting Information for

Palladium-Catalyzed Aromatic C-H Bond Nitration Using Removable Directing Groups: Regiospecific Synthesis of Substituted *o*-Nitrophenols from Related Phenols

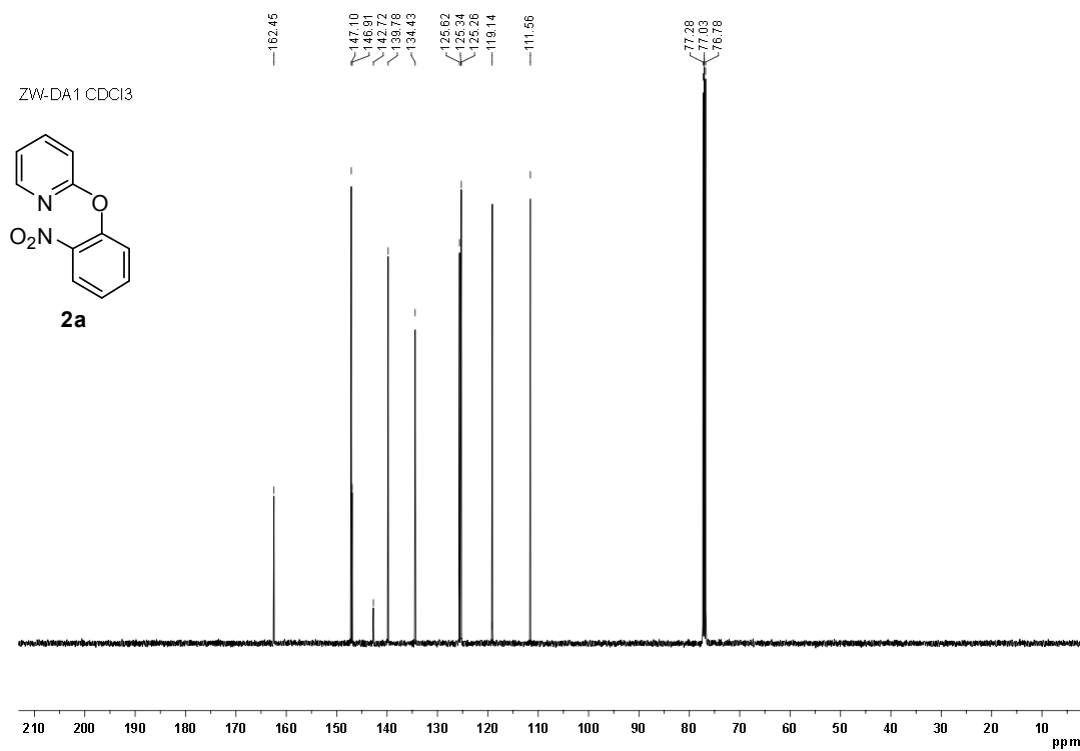
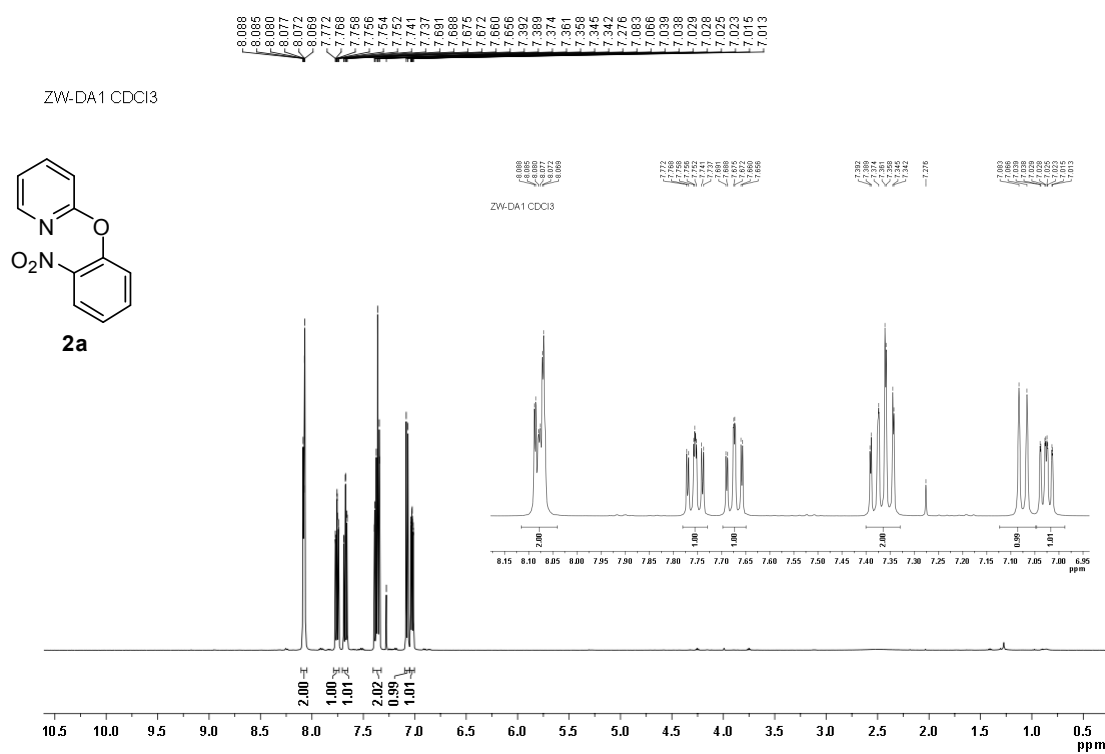
Wei Zhang, Jian Zhang, Shaobo Ren, and Yunkui Liu*

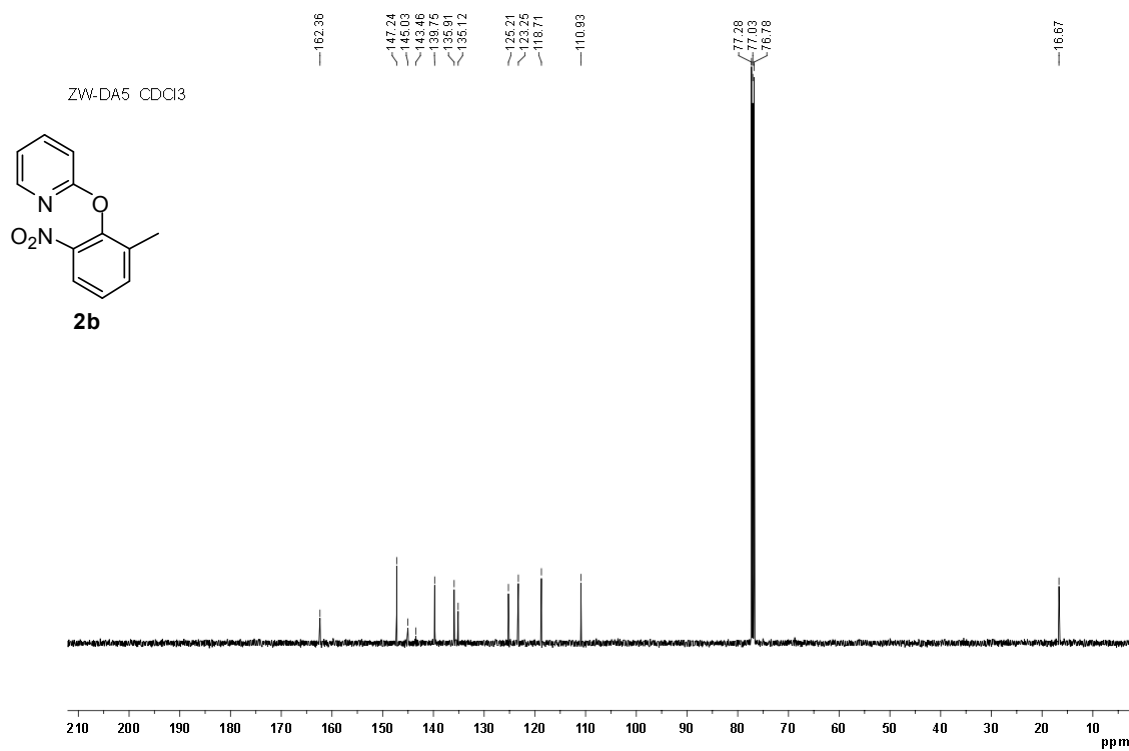
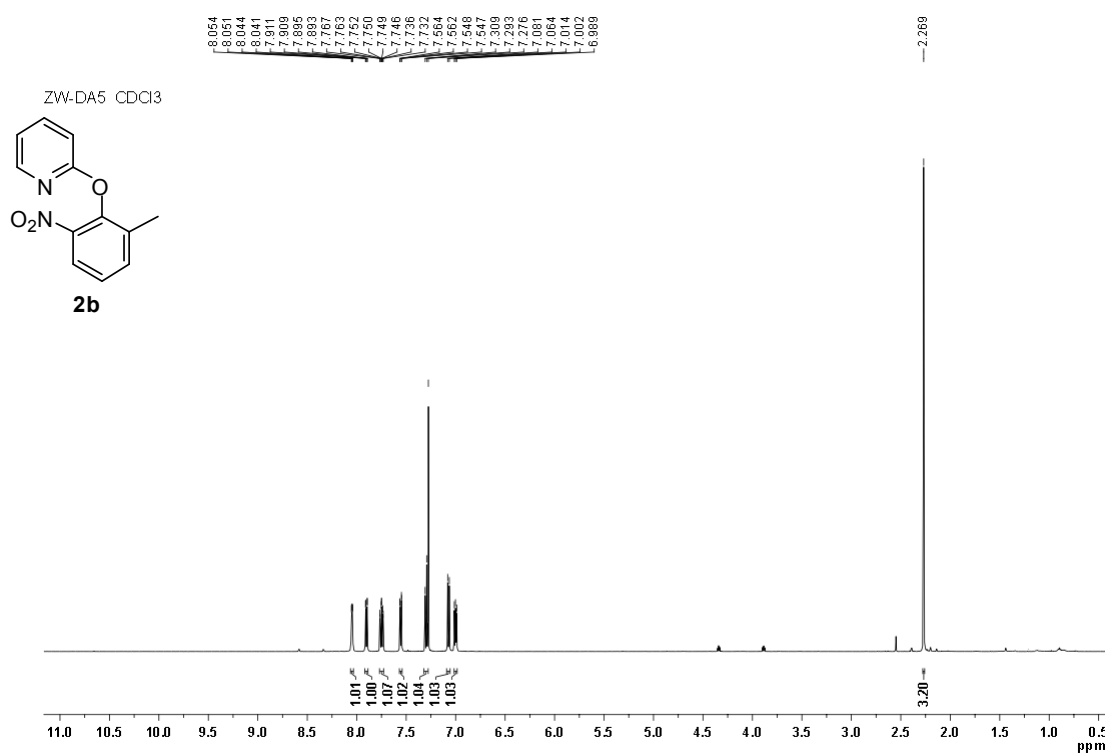
State Key Laboratory Breeding Base of Green Chemistry-Synthesis Technology, College of
Chemical Engineering, Zhejiang University of Technology, Hangzhou 310014, P. R. Chin
Email: ykuiliu@zjut.edu.cn

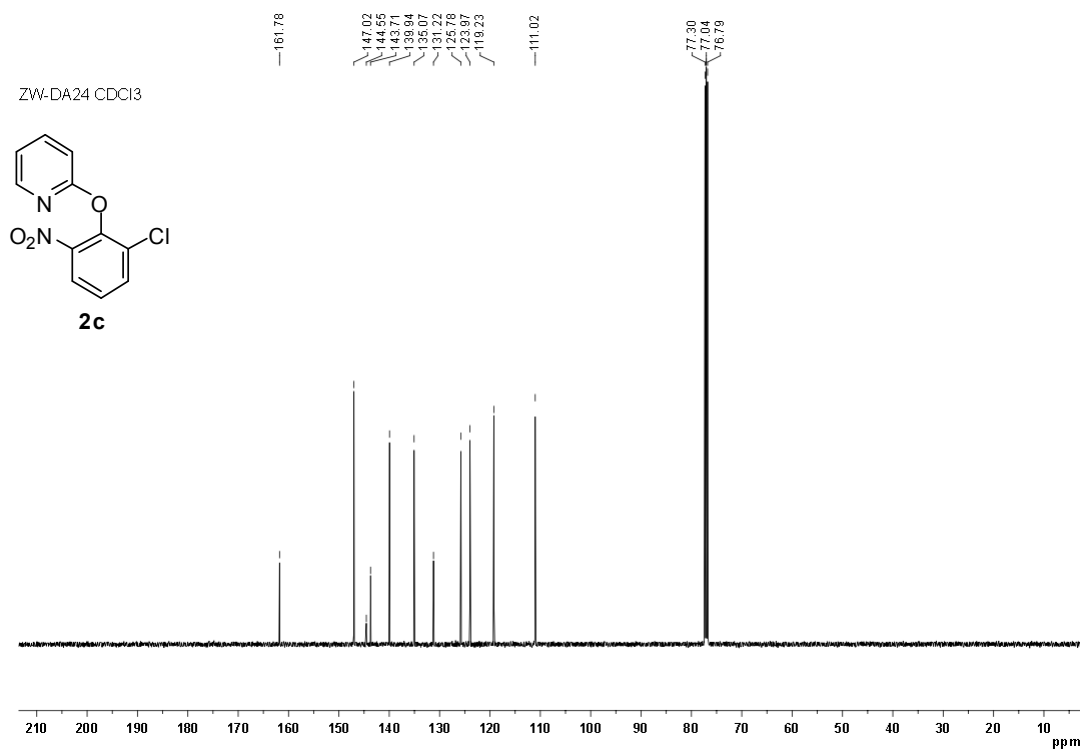
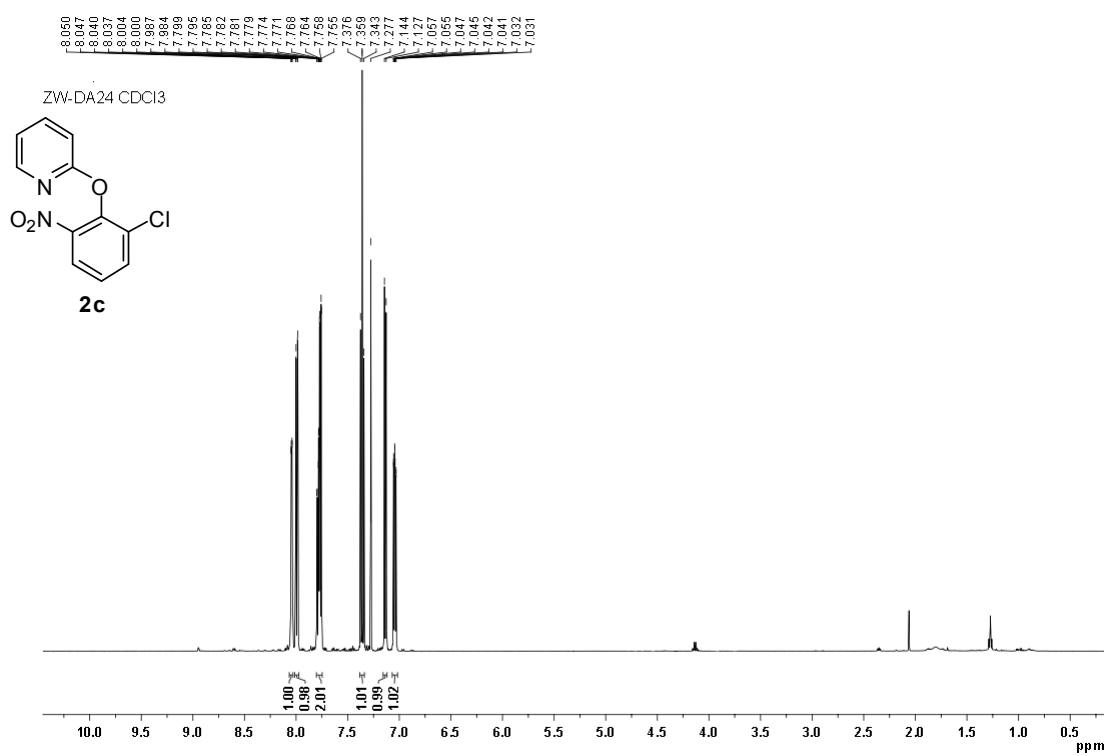
Contents

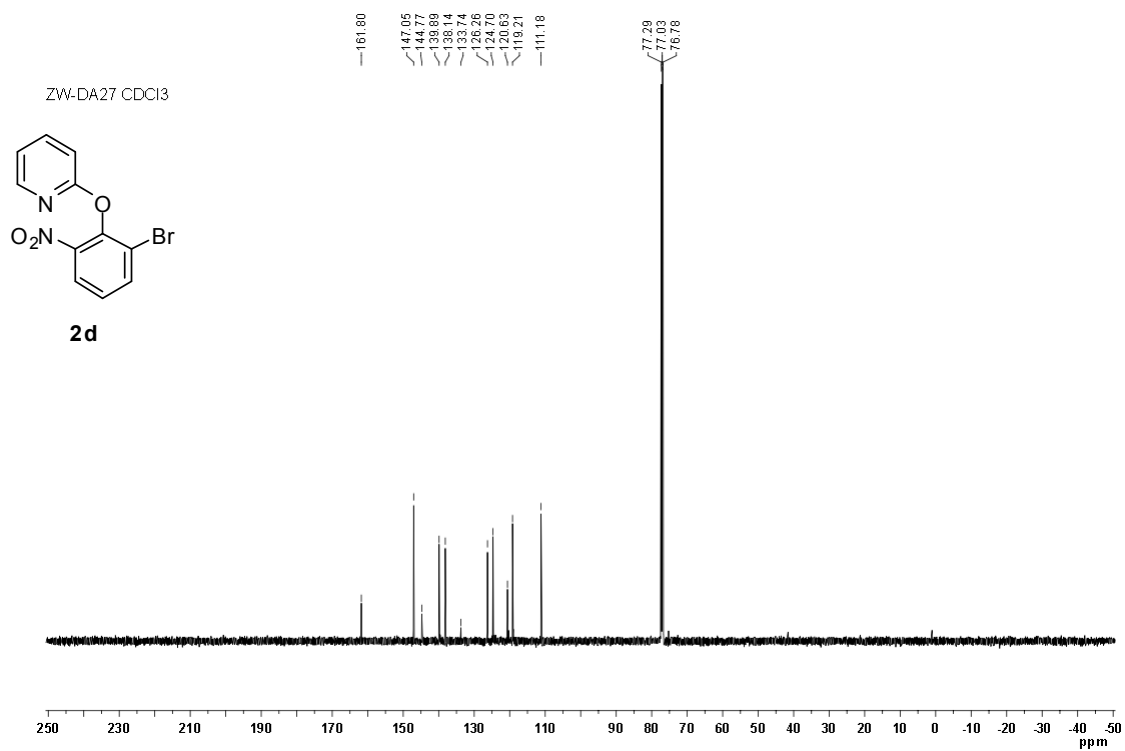
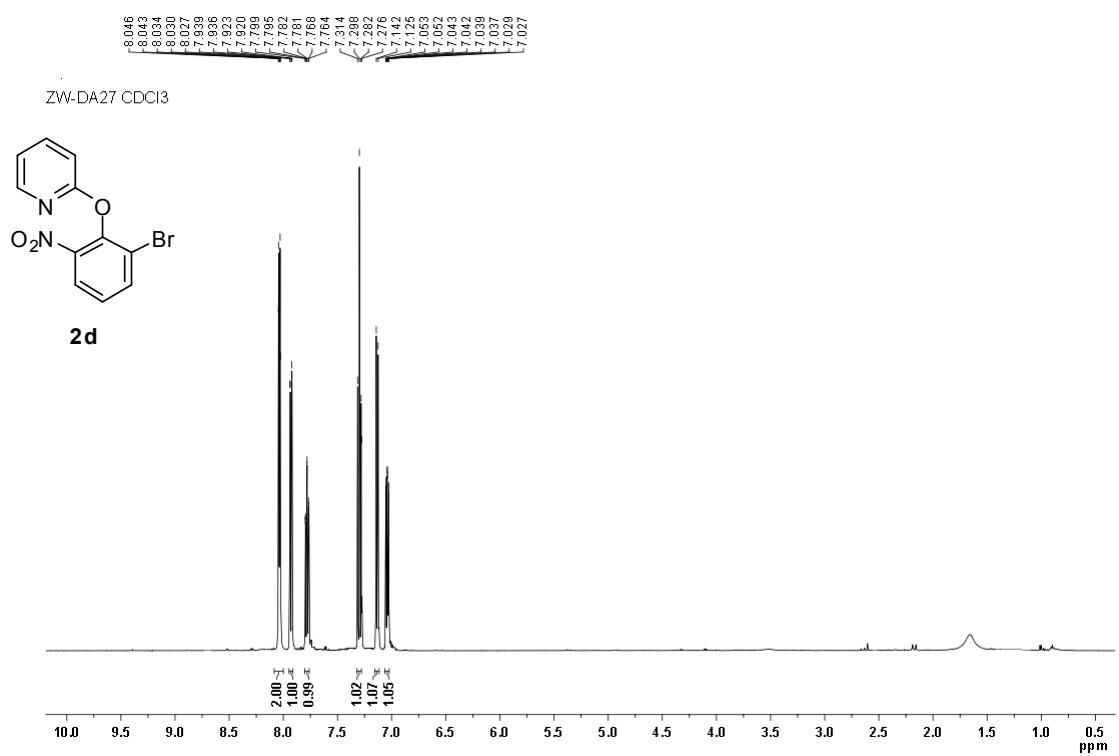
1. NMR Spectra of 2a–2x	S2– S25
2. NMR Spectra of 3a–3u	S16– S37
3. ¹ H NMR Spectrum of 1a-d₅	S38
4. ¹ H NMR Spectrum of 2a and 2a-d₄ Mixture for KIE Calculation	S38

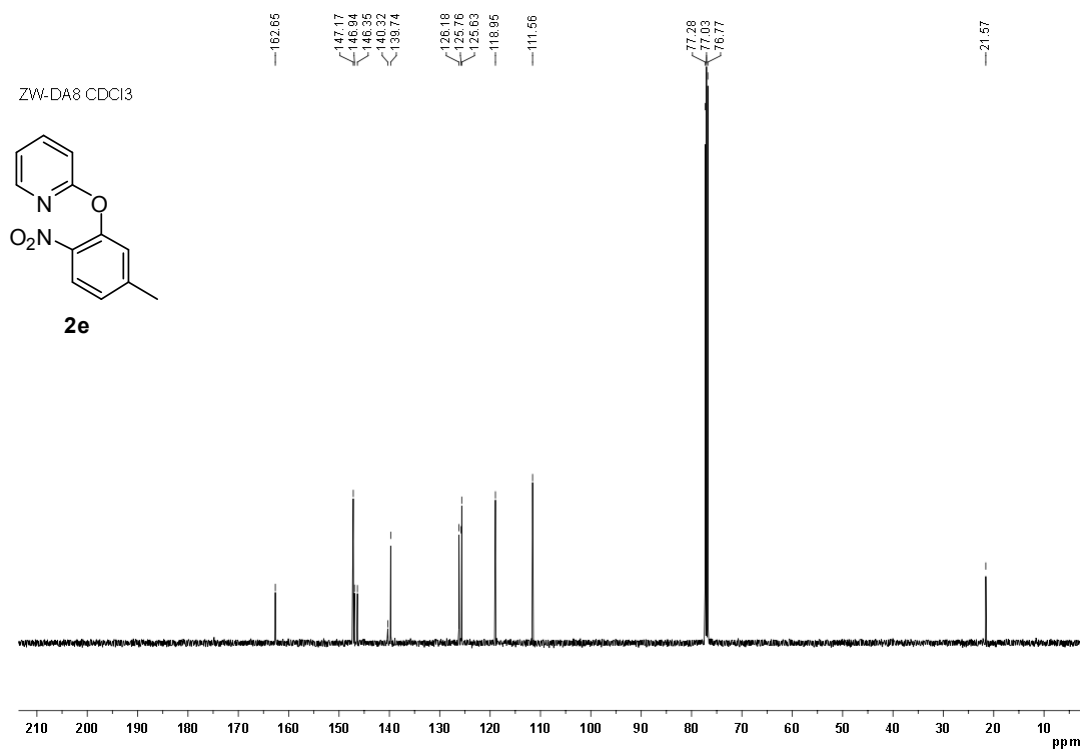
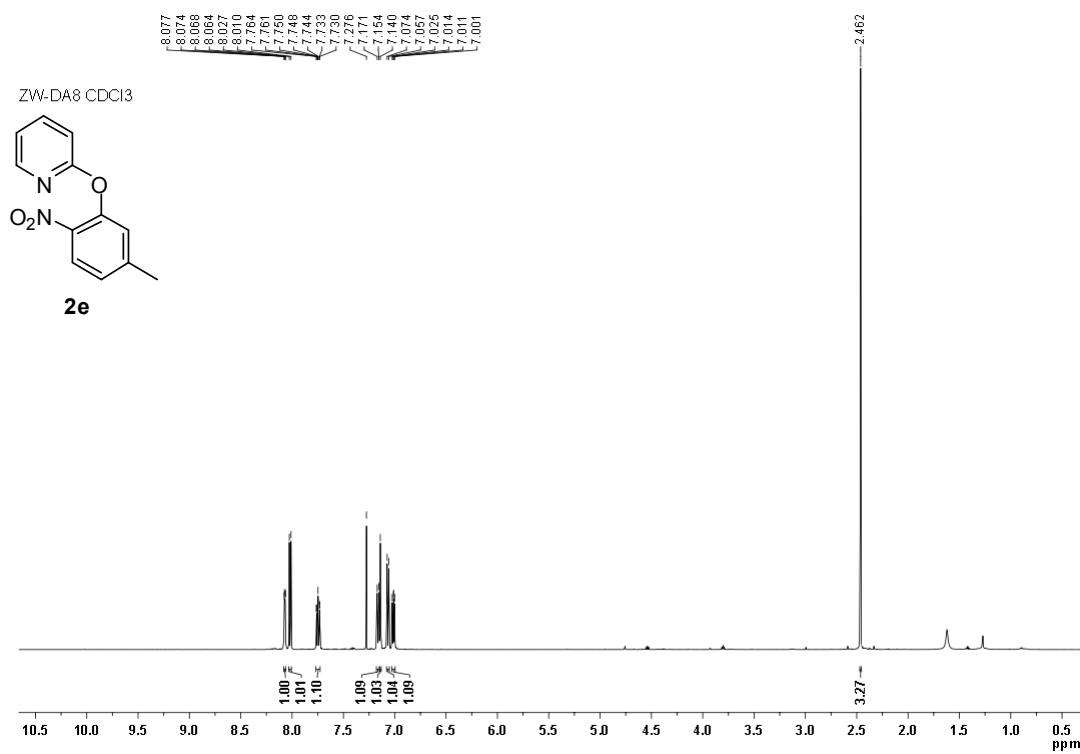
1. NMR Spectra of 2a-2x

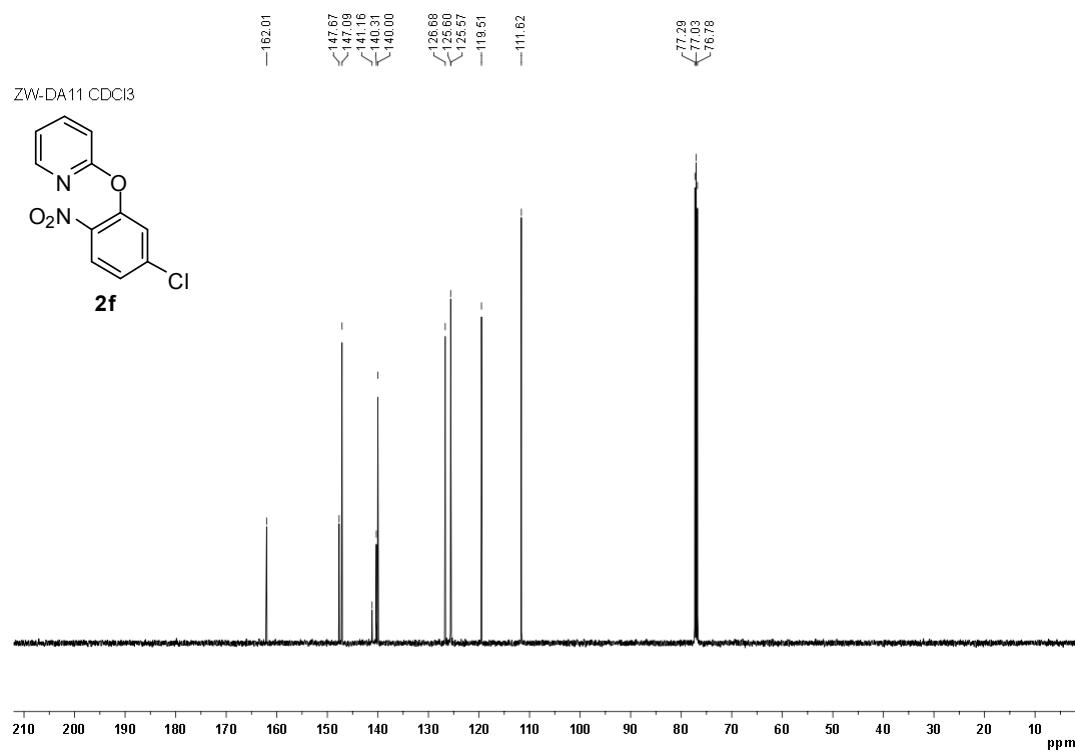
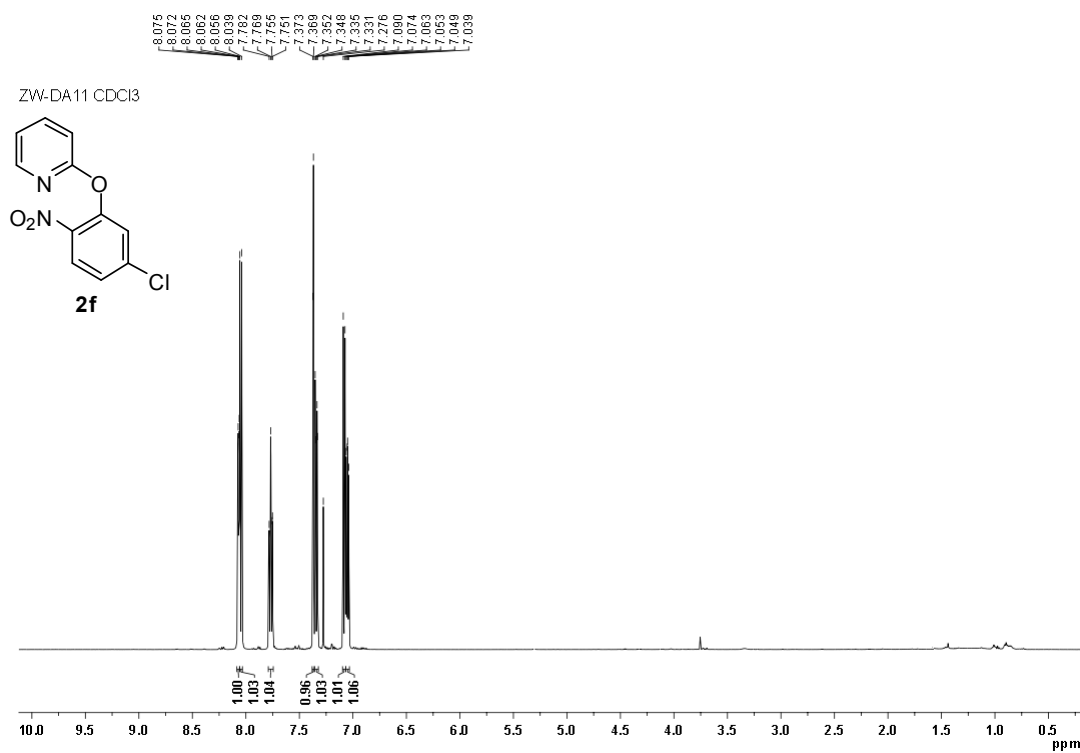


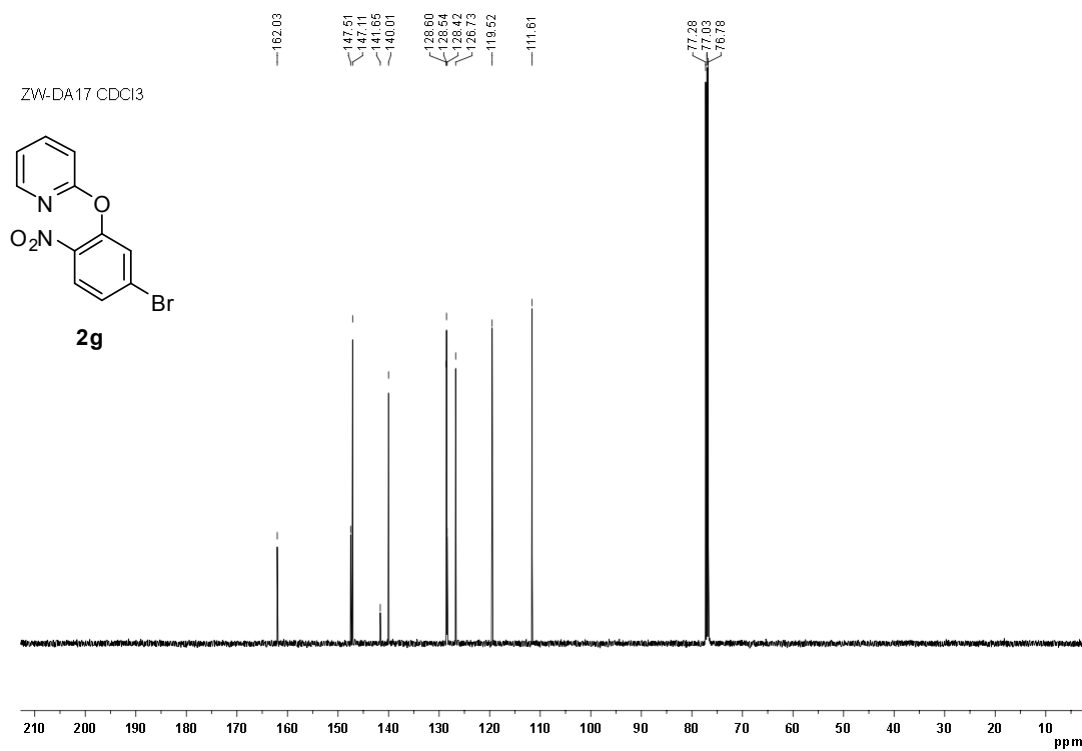
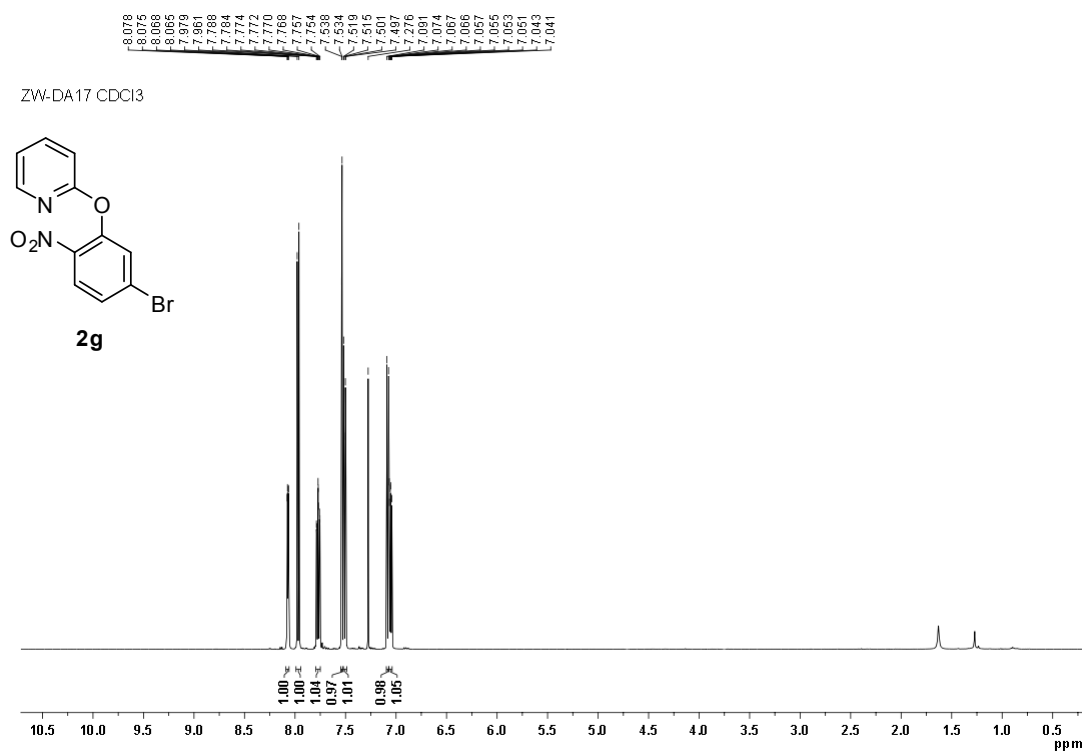


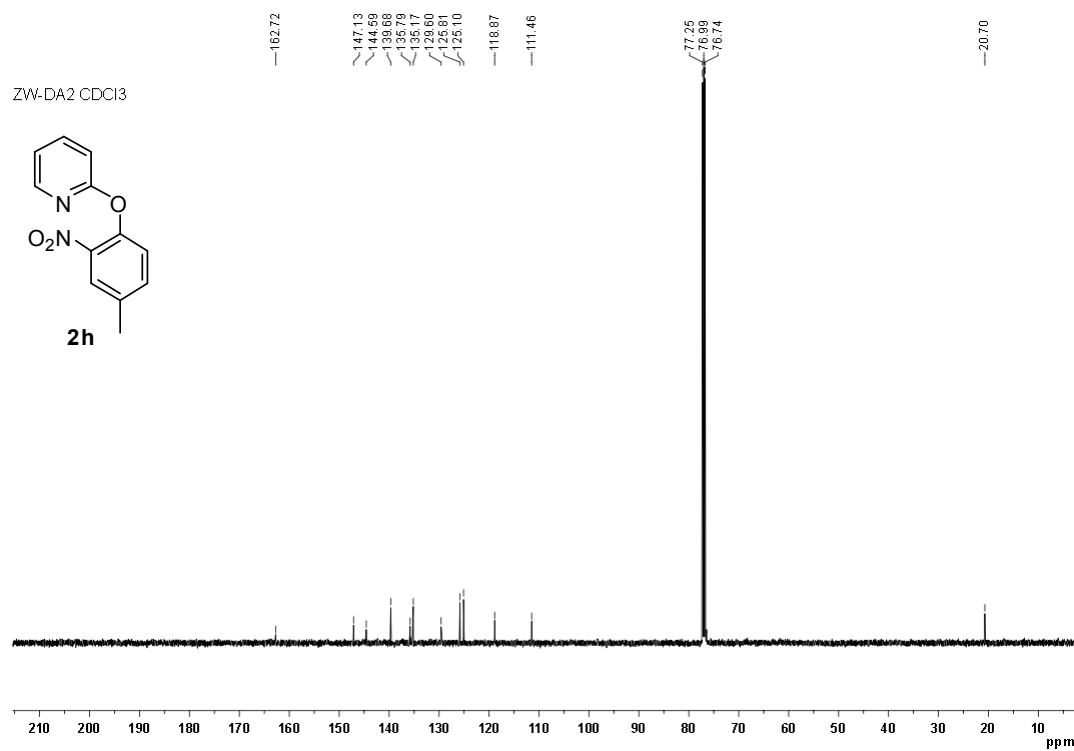
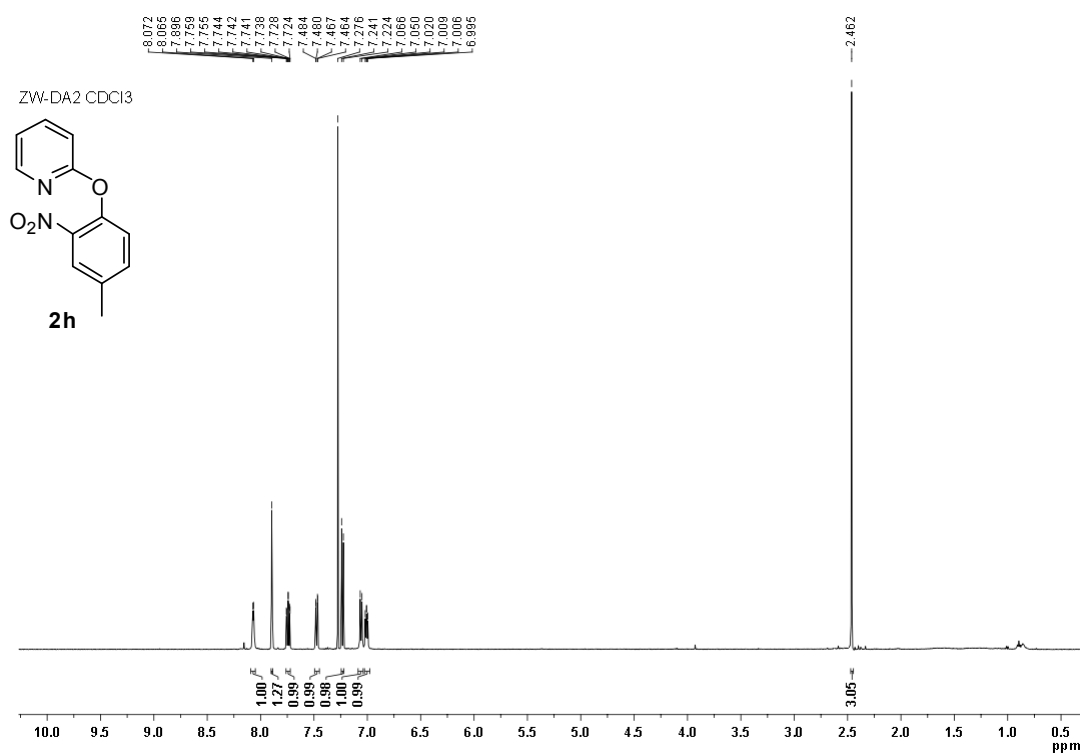


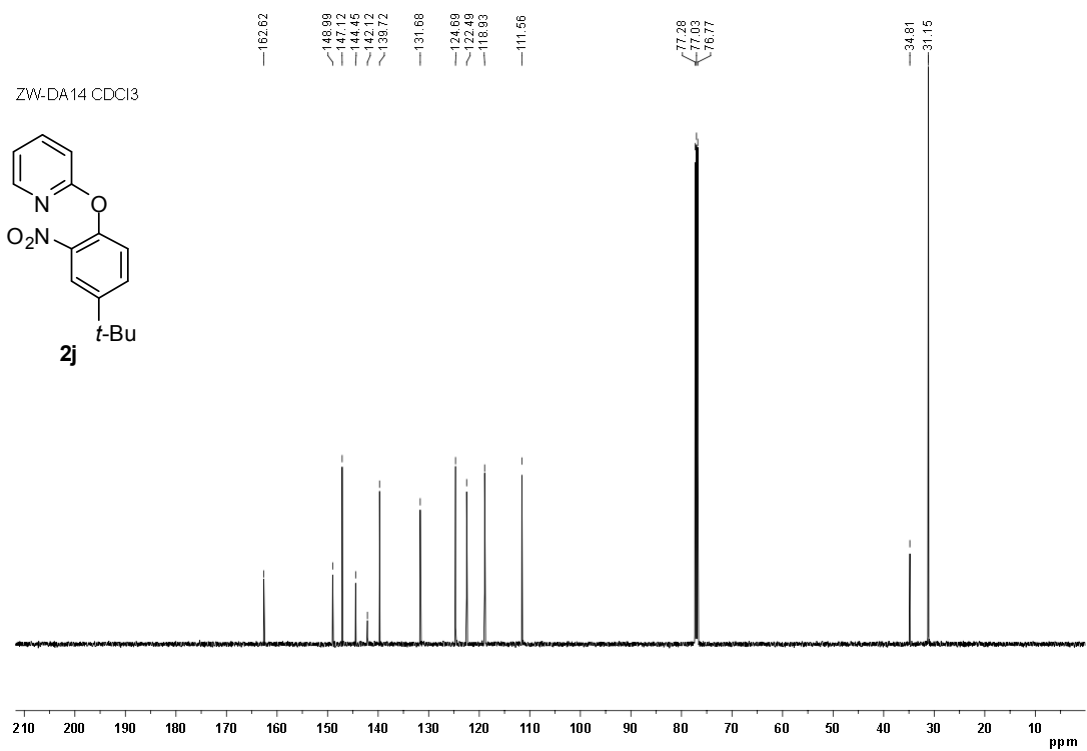
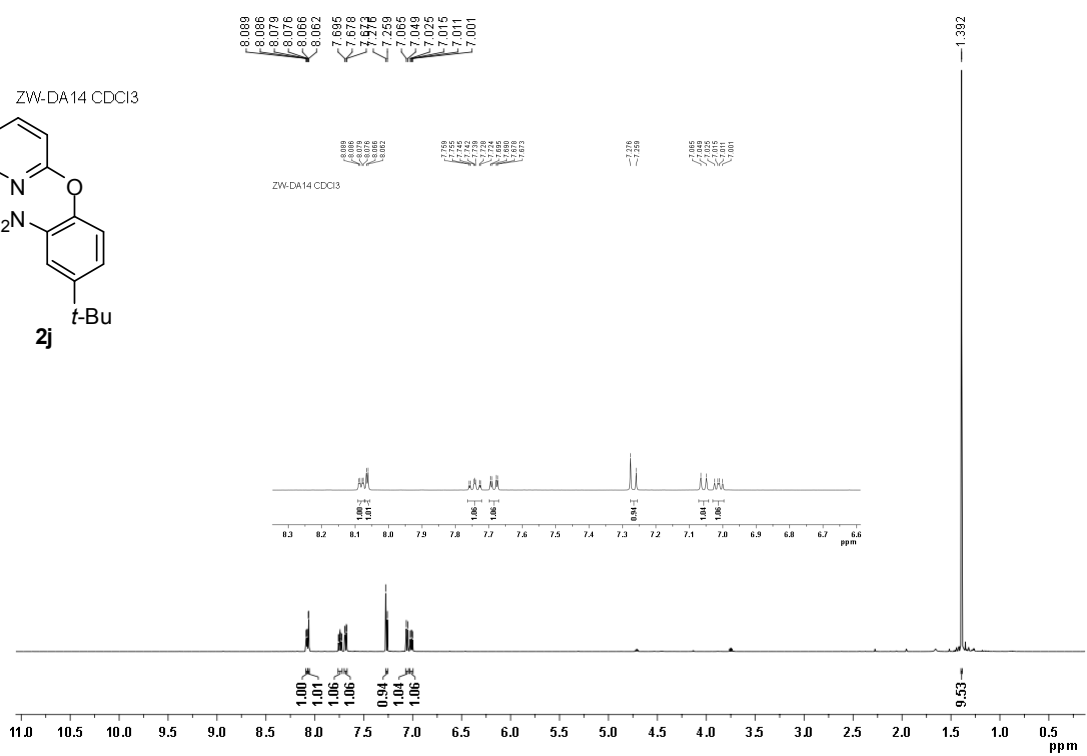




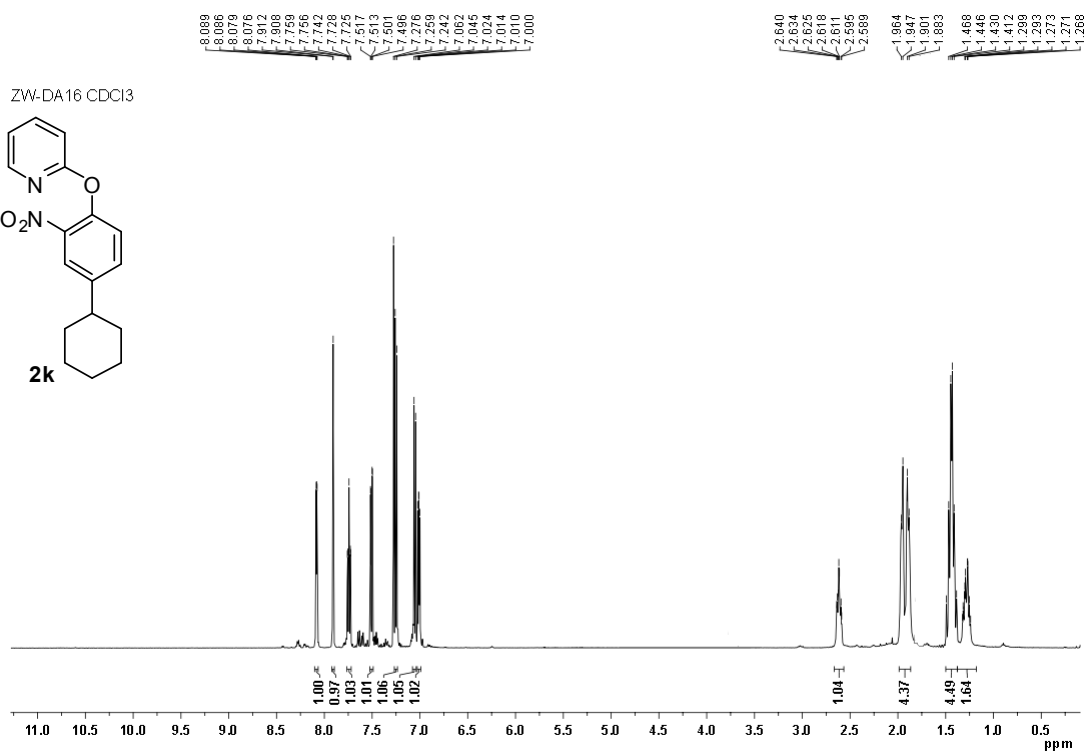
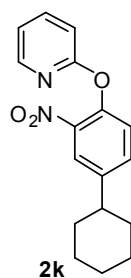




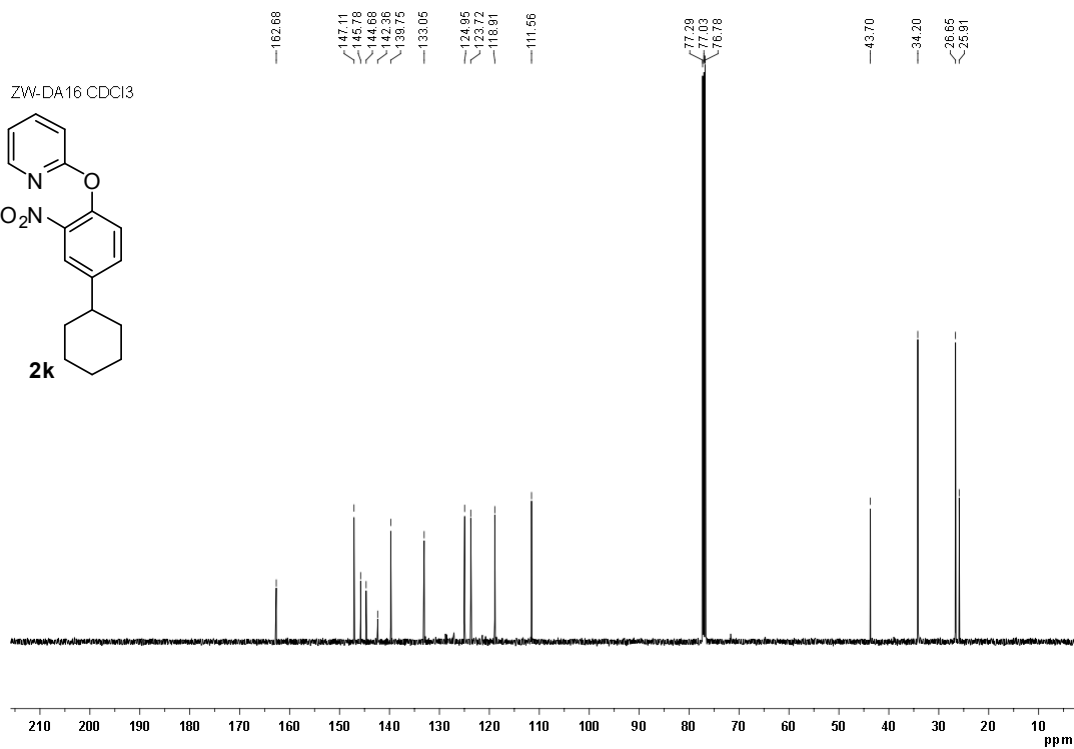
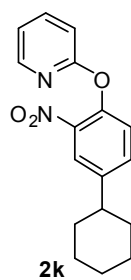


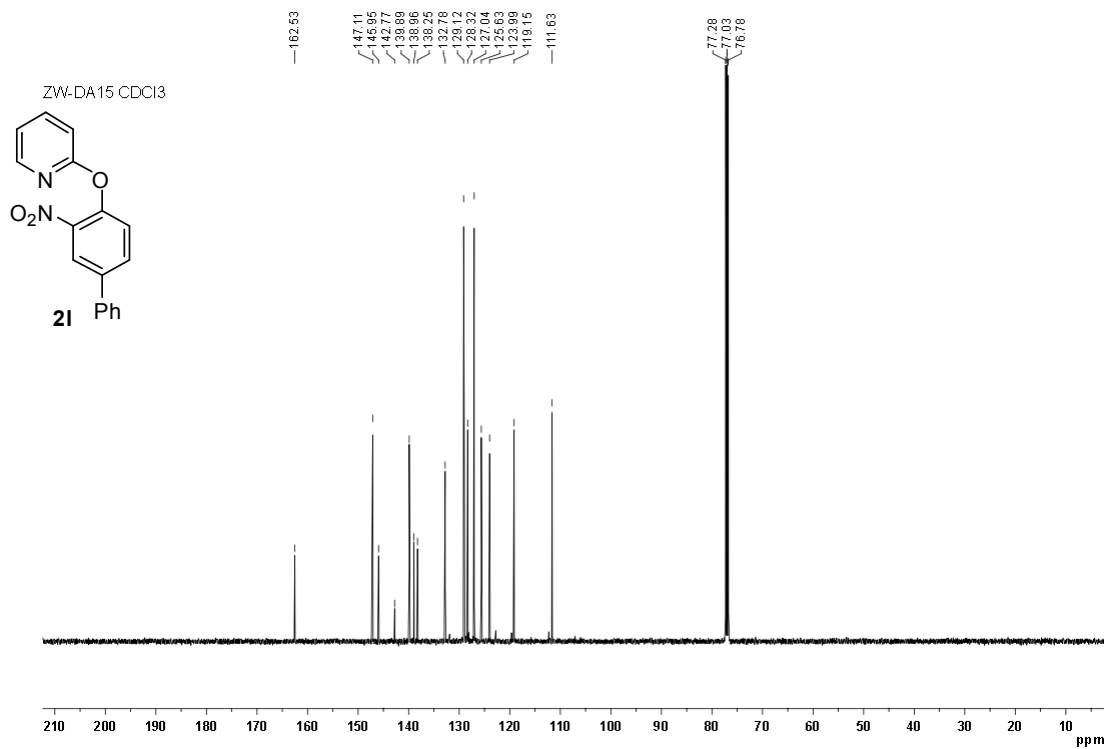
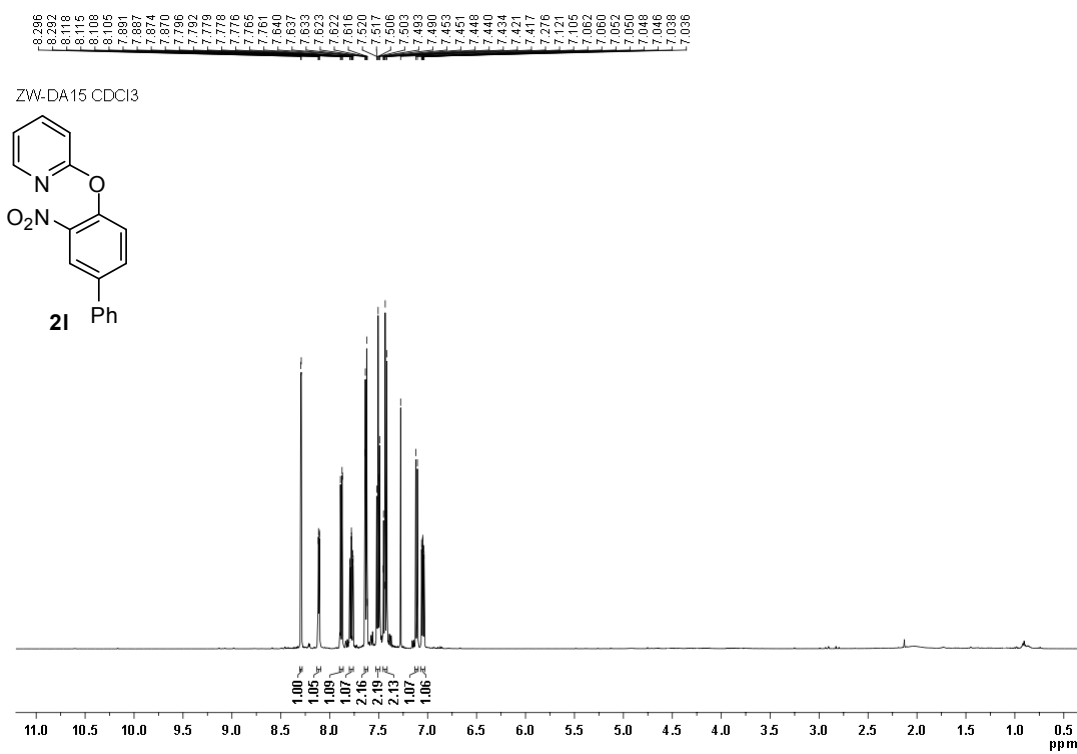


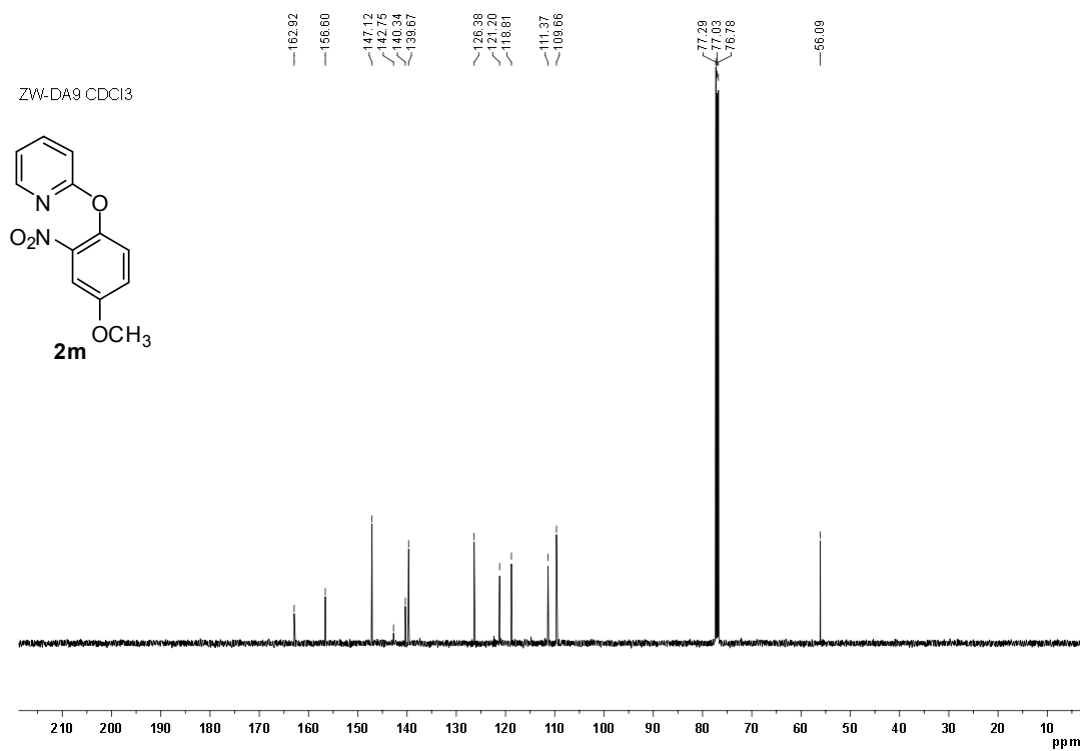
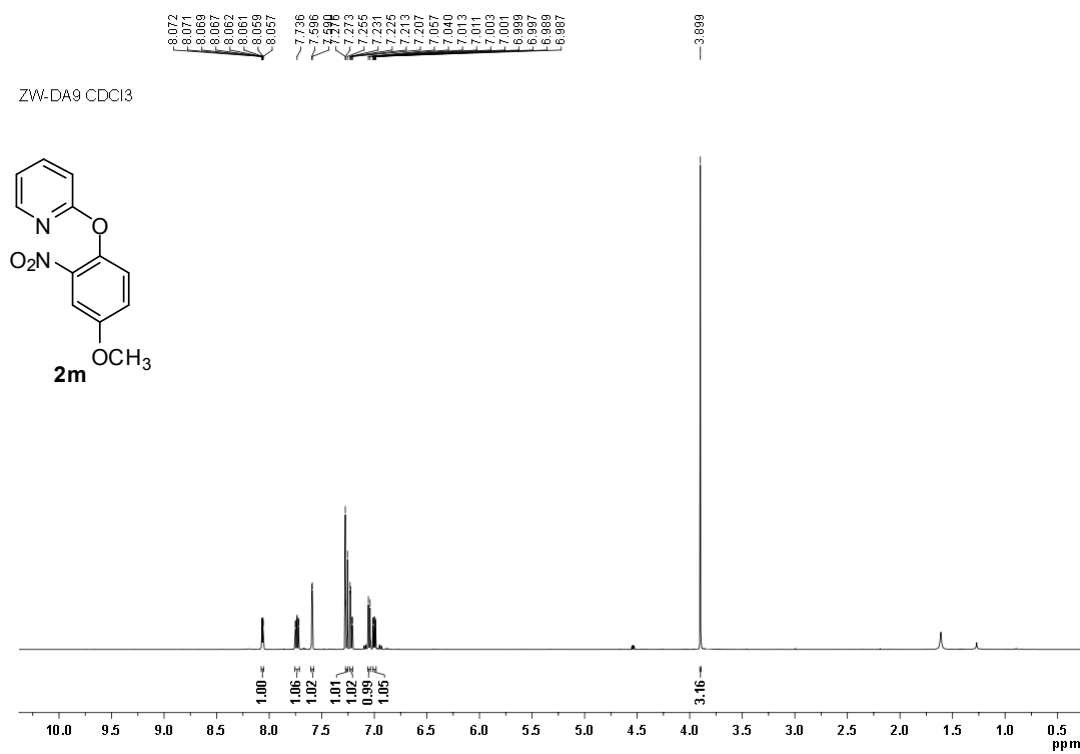
ZW-DA16 CDCl₃

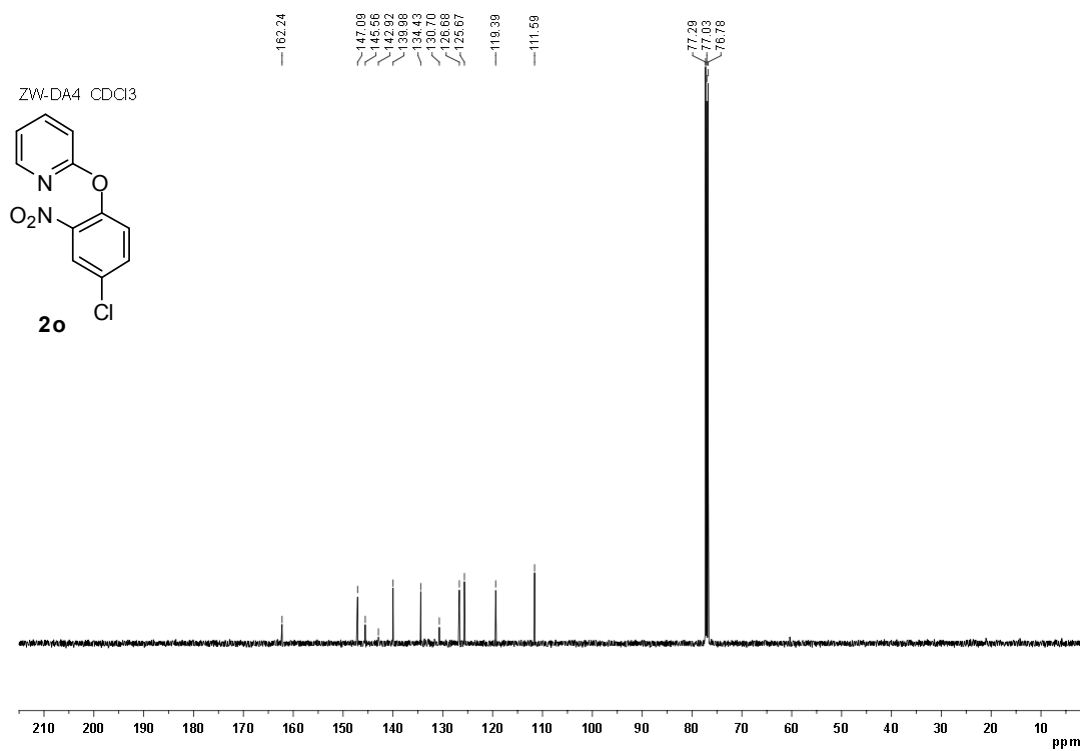
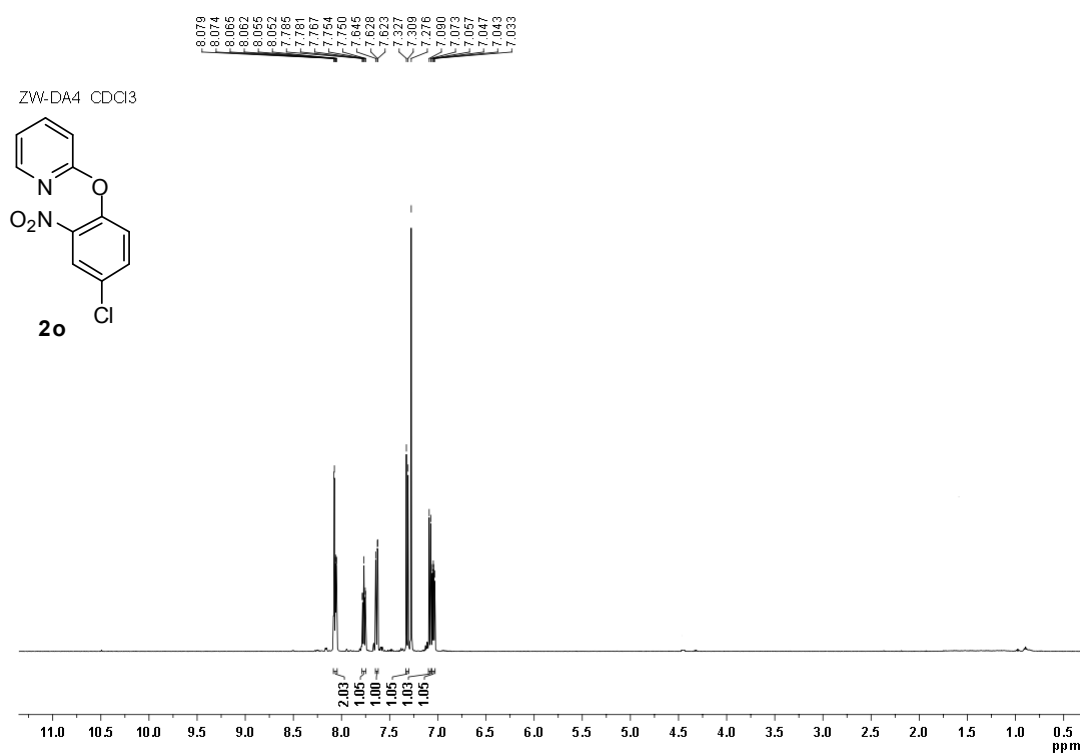


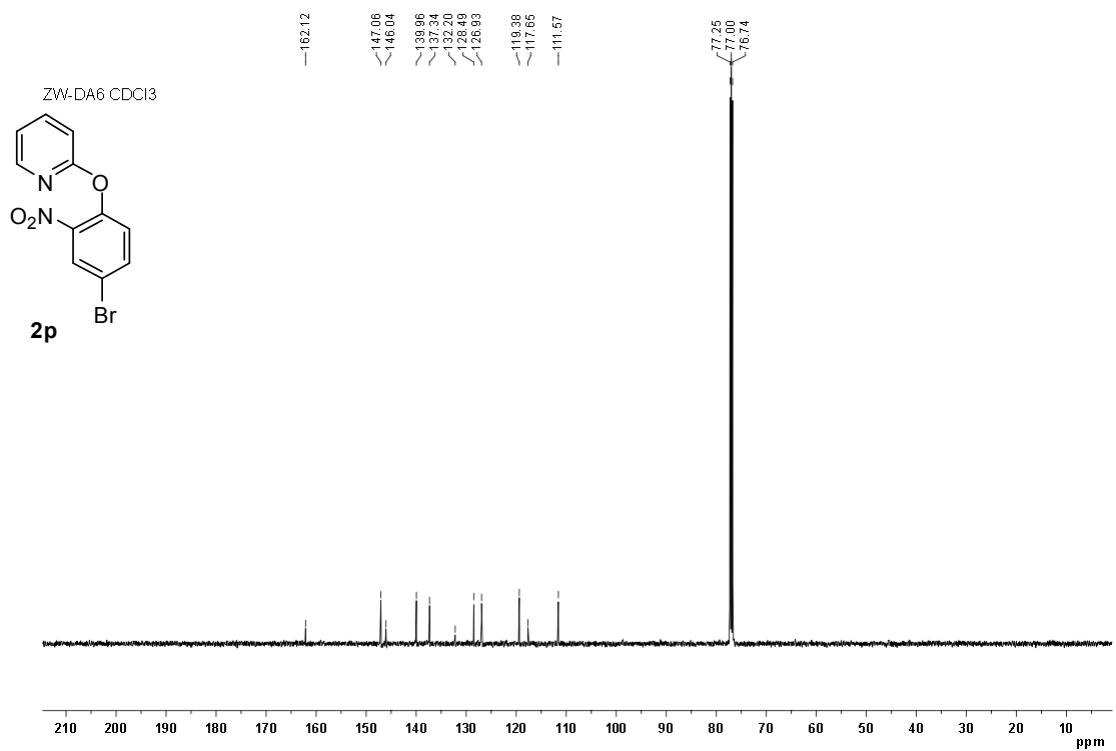
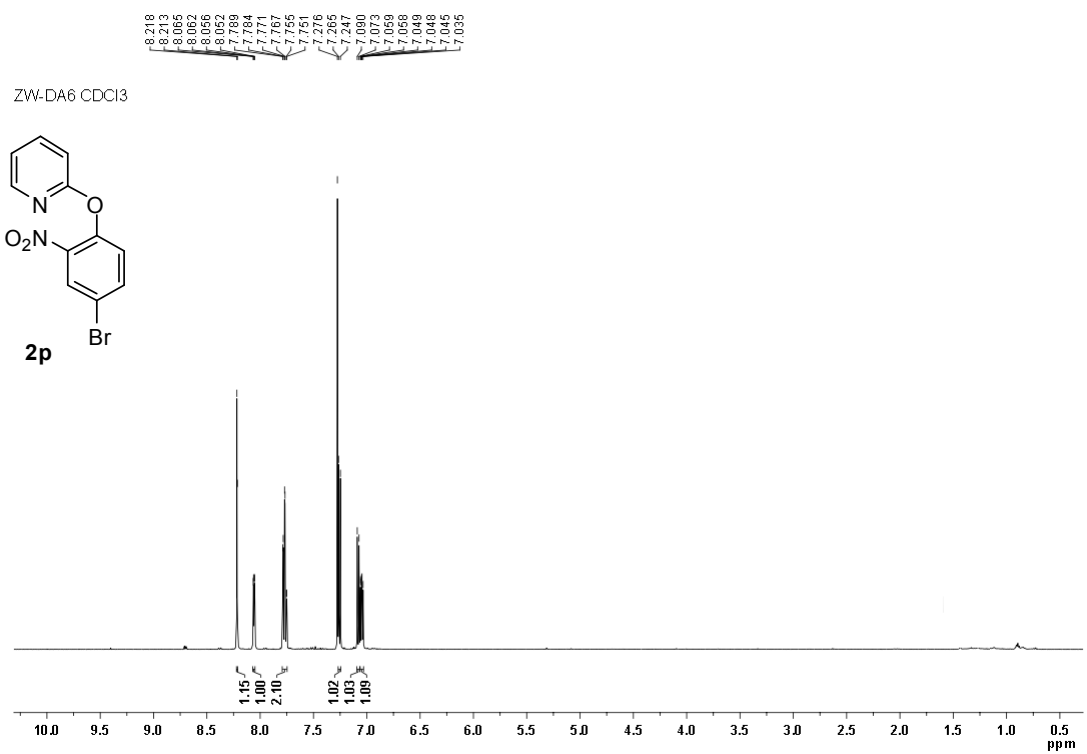
ZW-DA16 CDCl₃



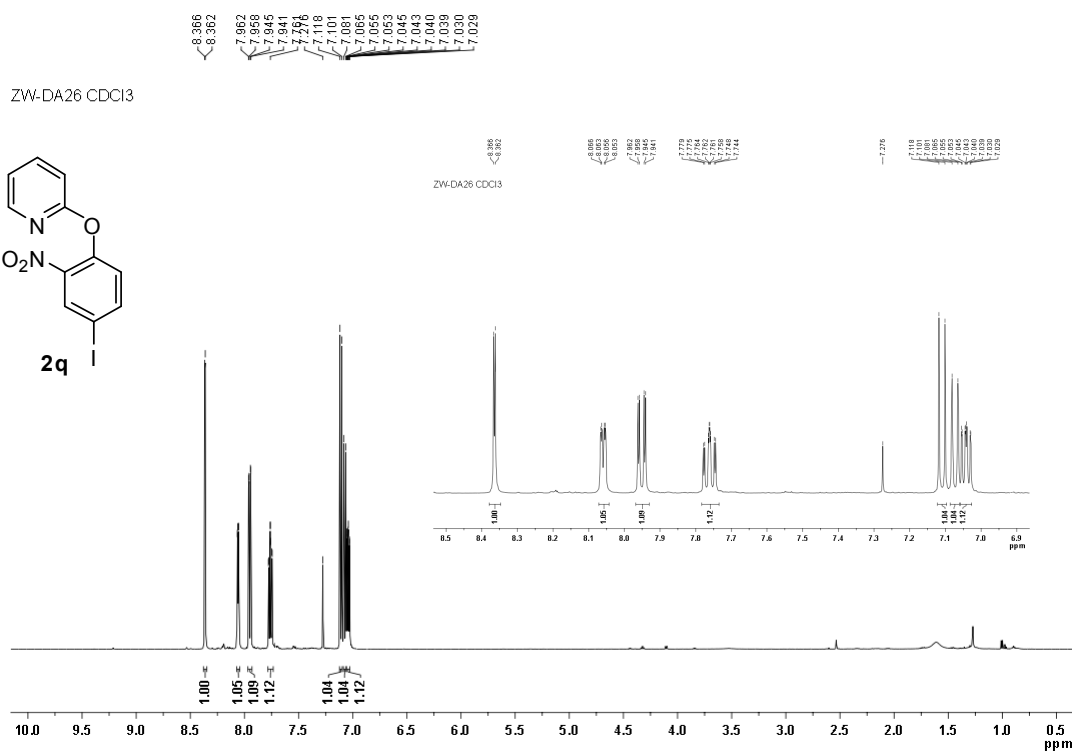
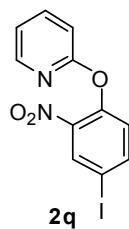




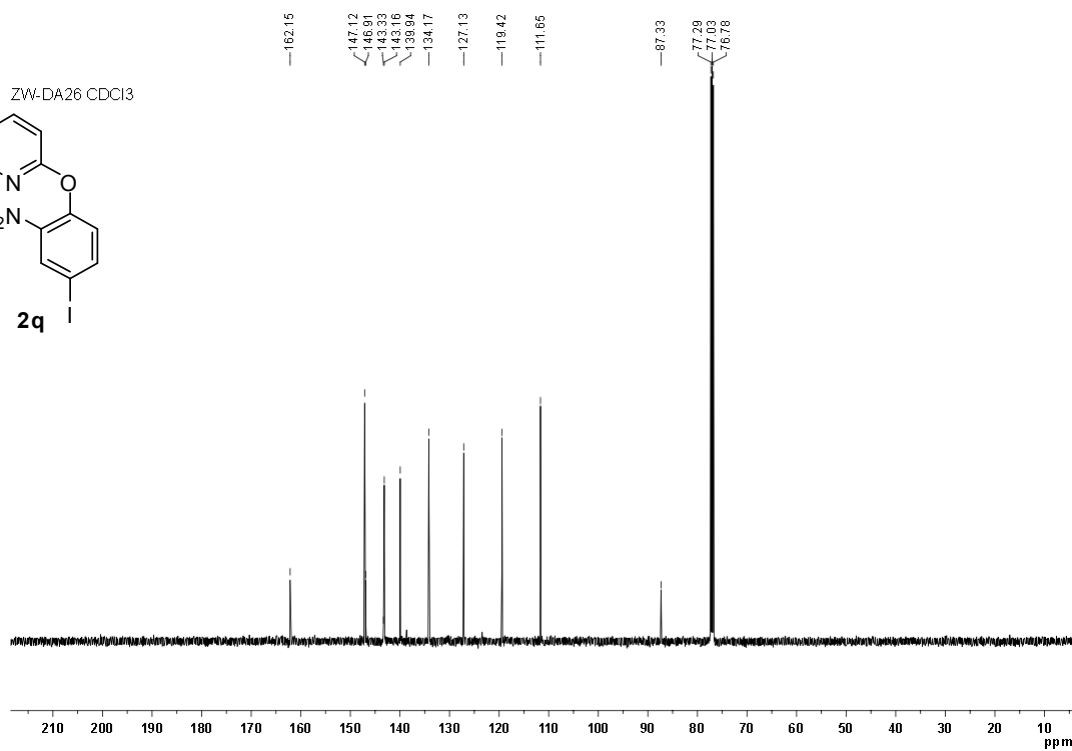
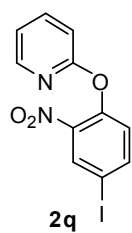


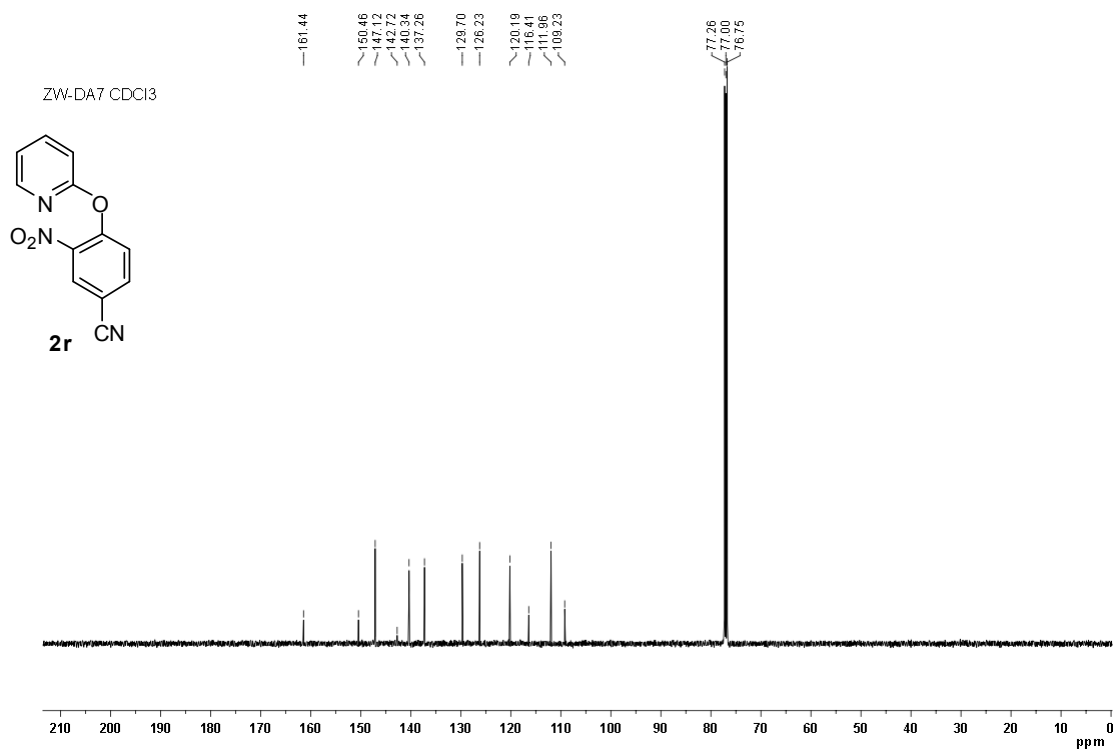
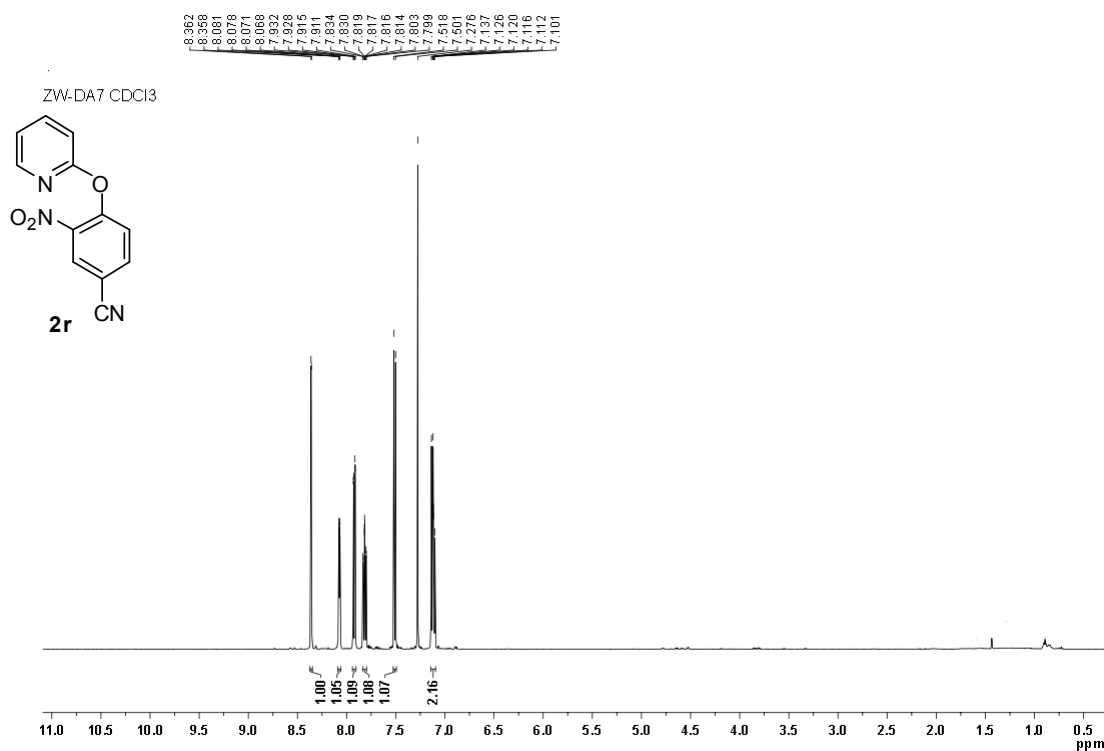


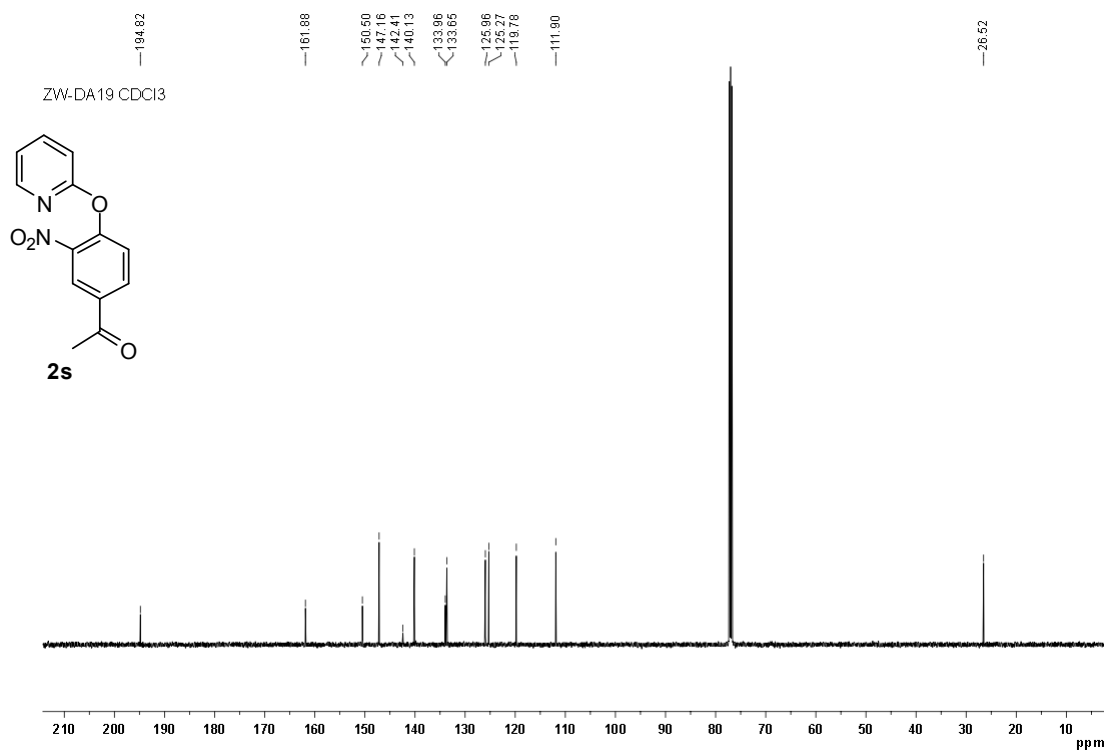
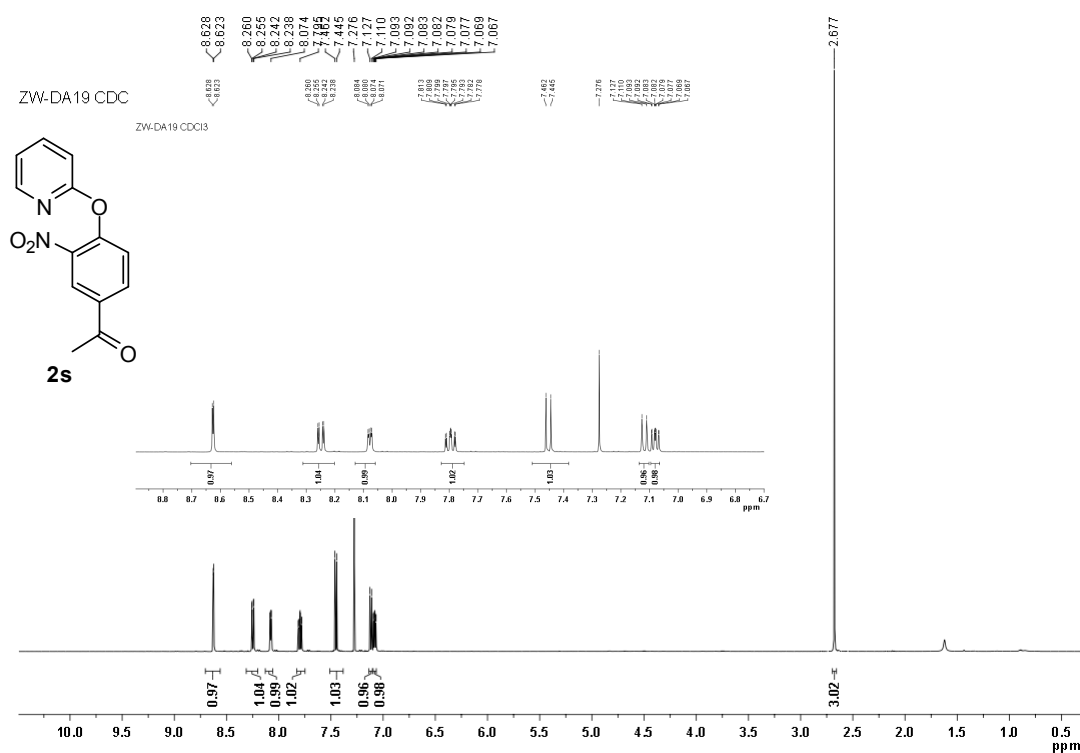
ZW-DA26 CDCl₃

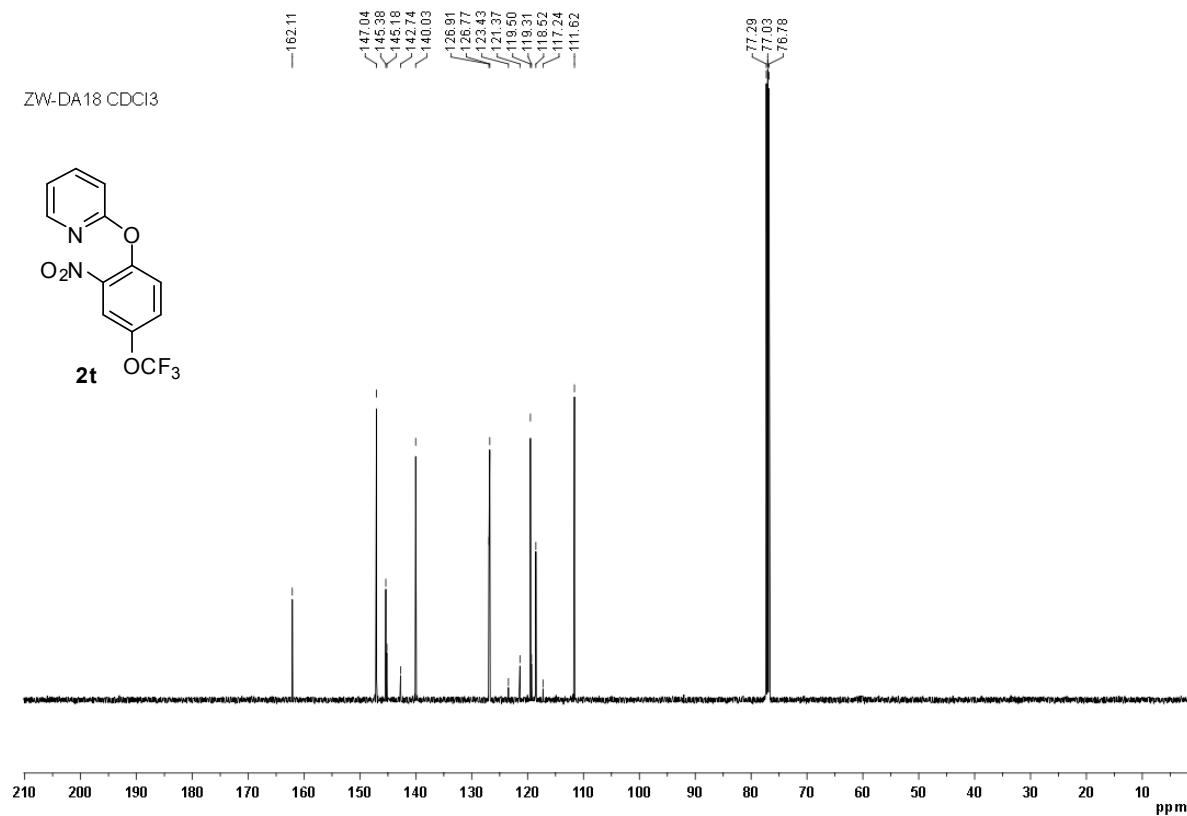
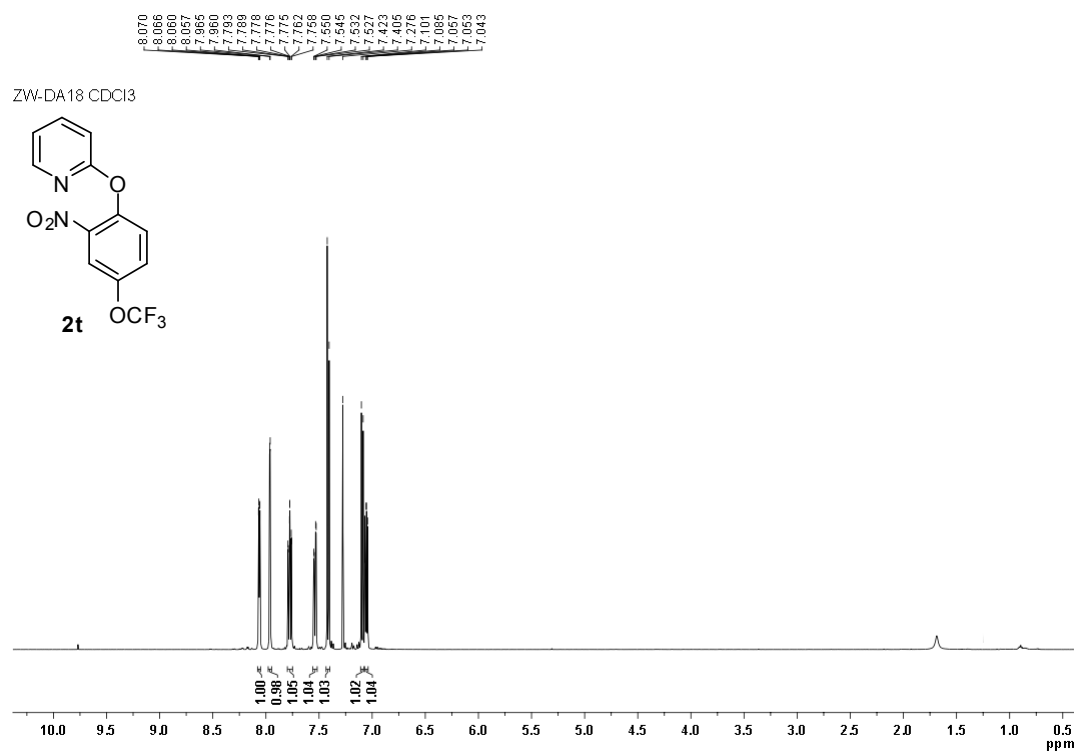


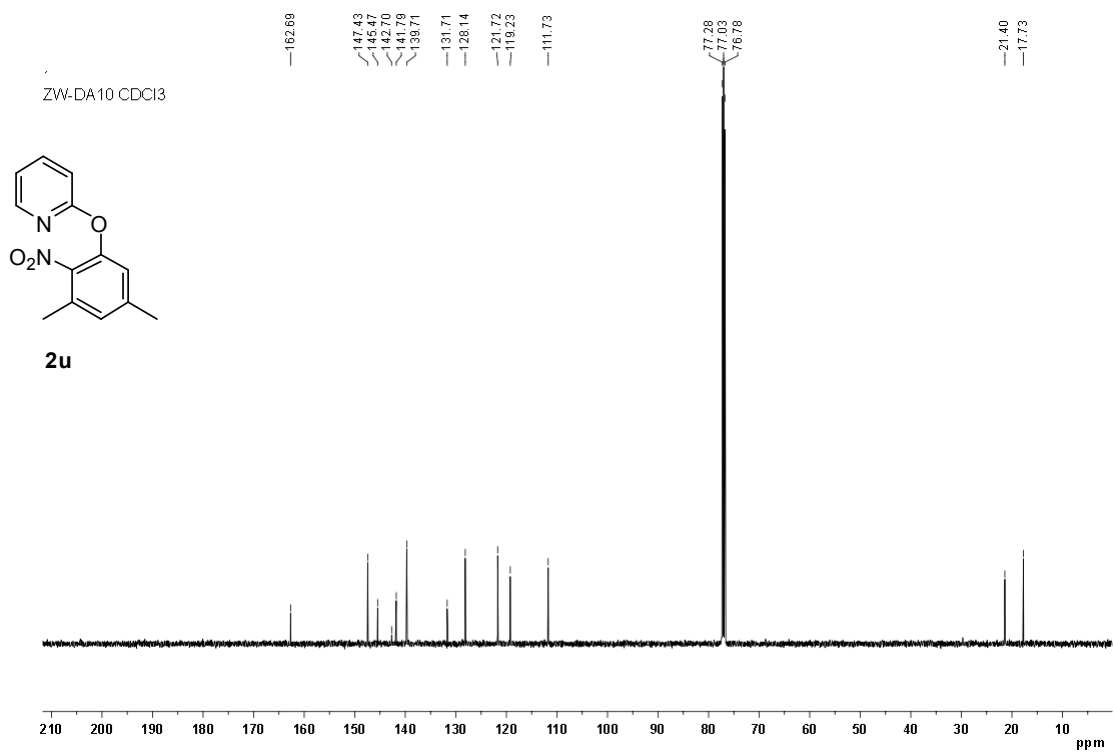
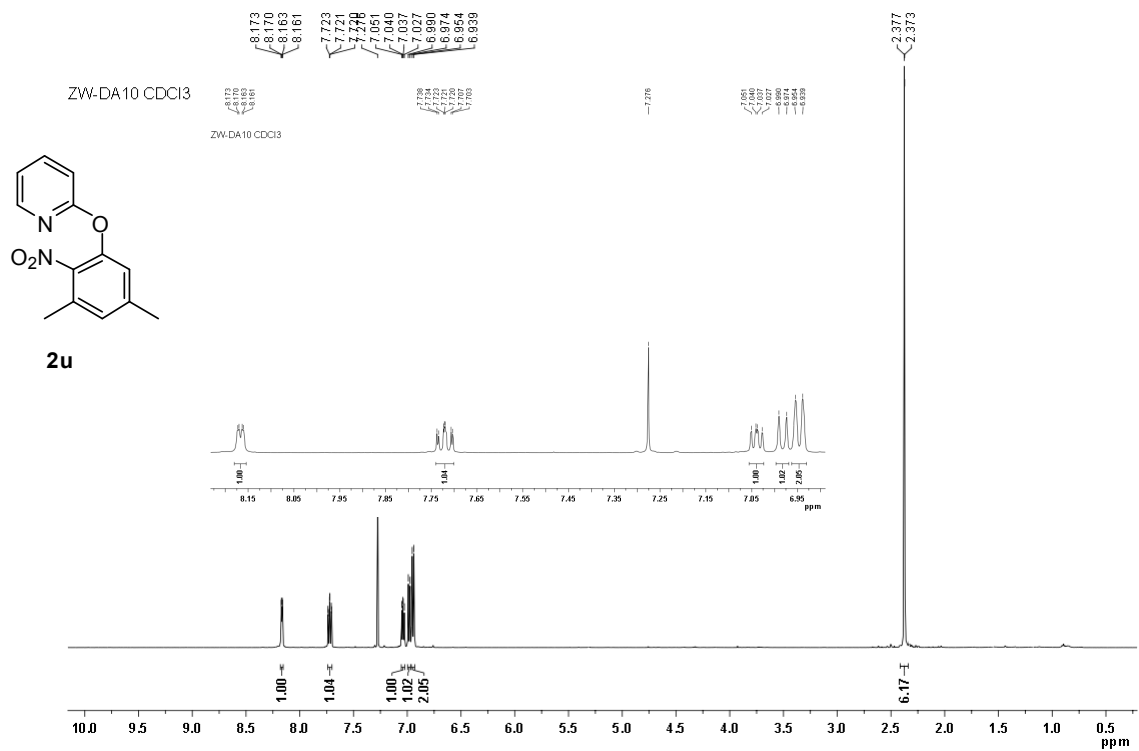
ZW-DA26 CDCl₃

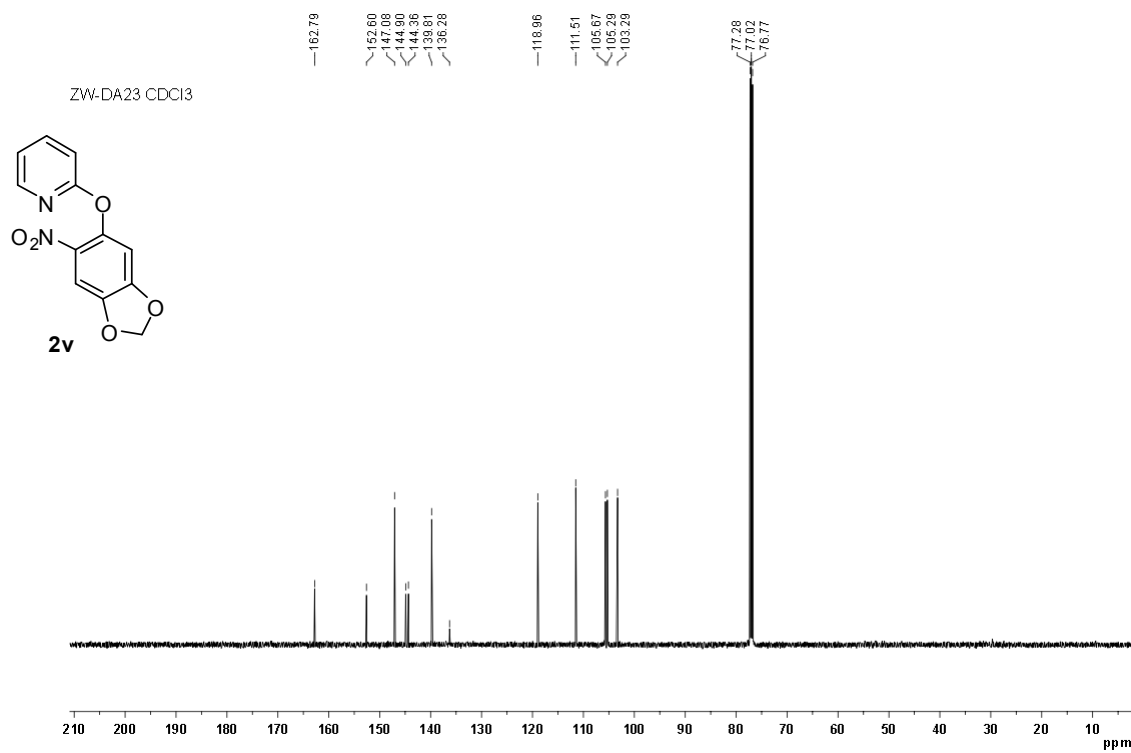
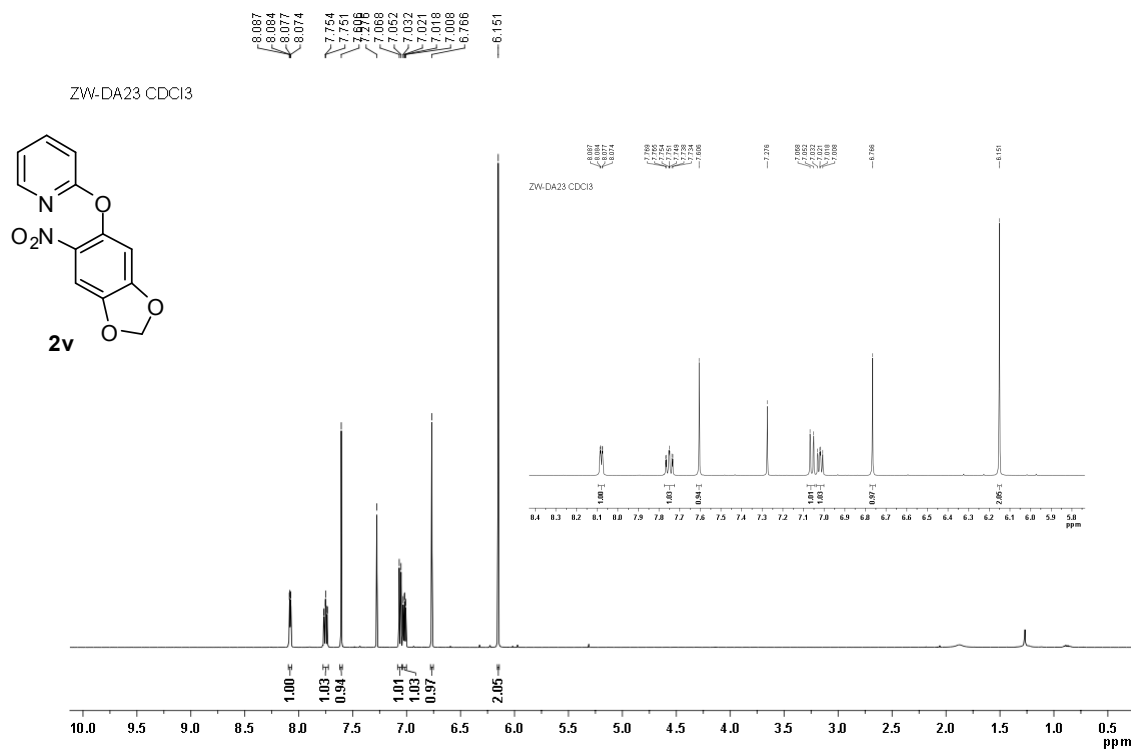


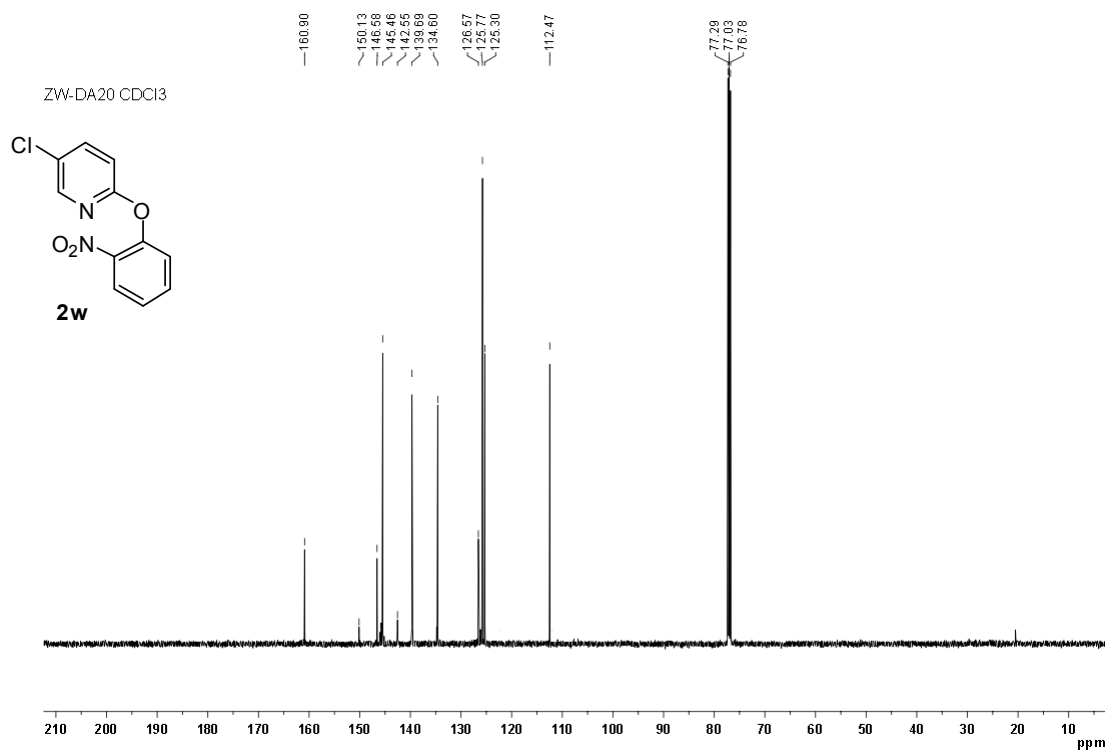
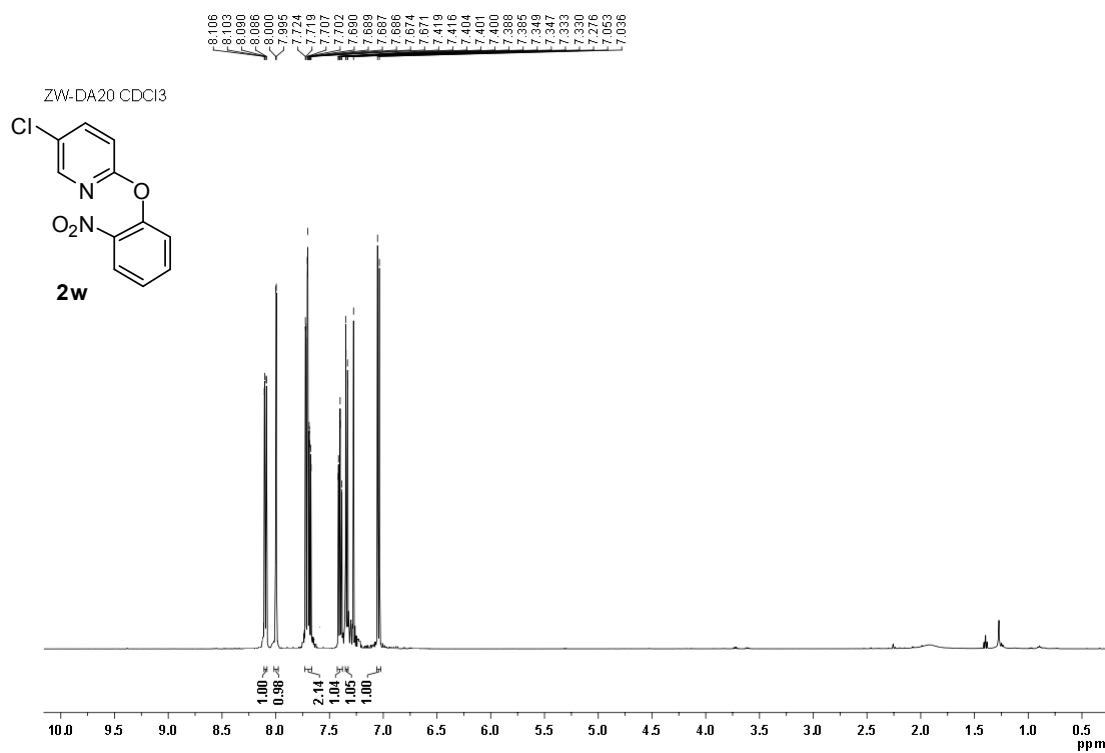


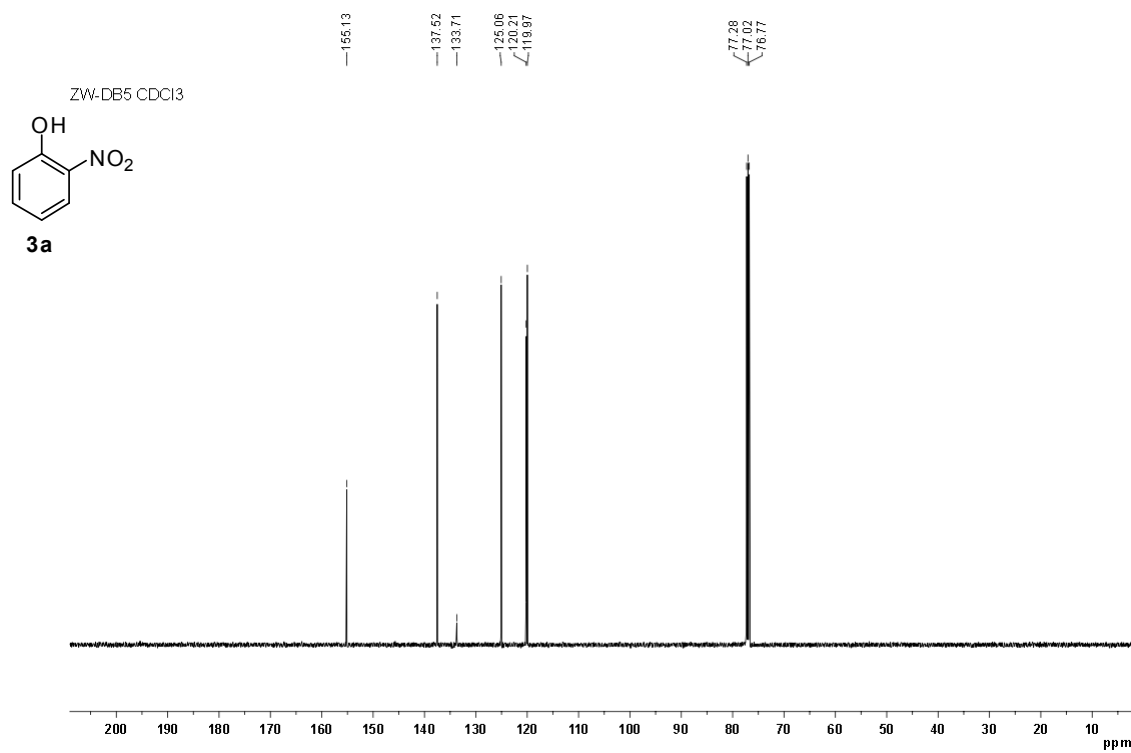
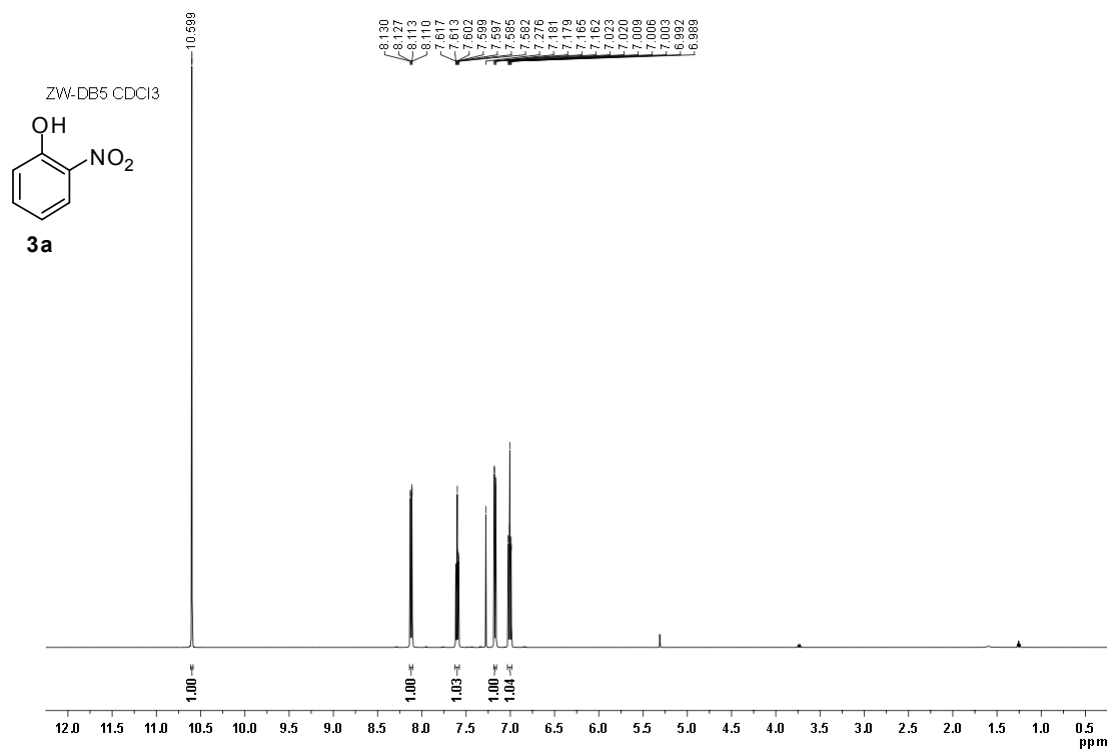


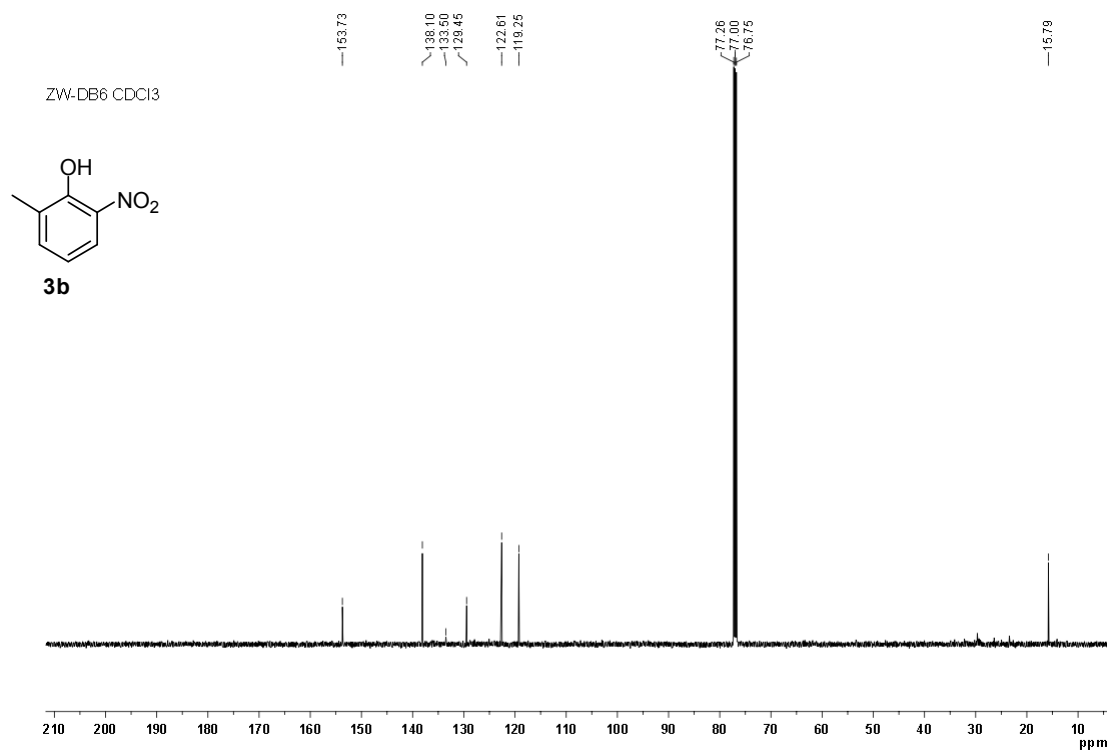
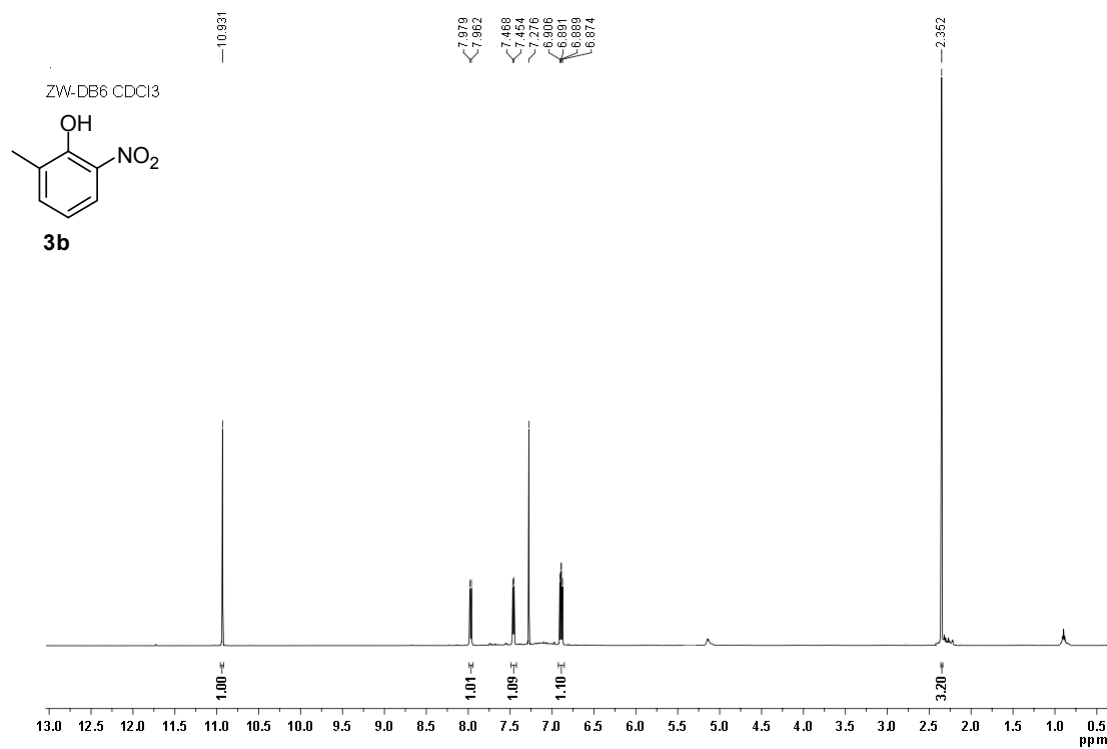


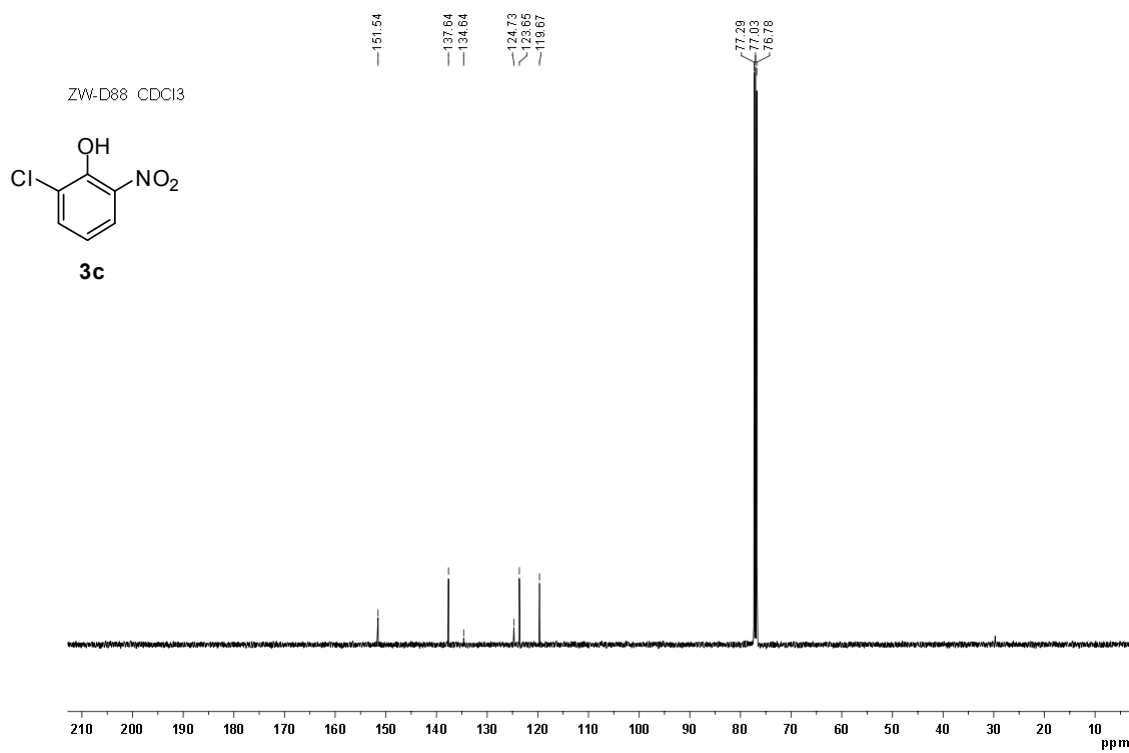
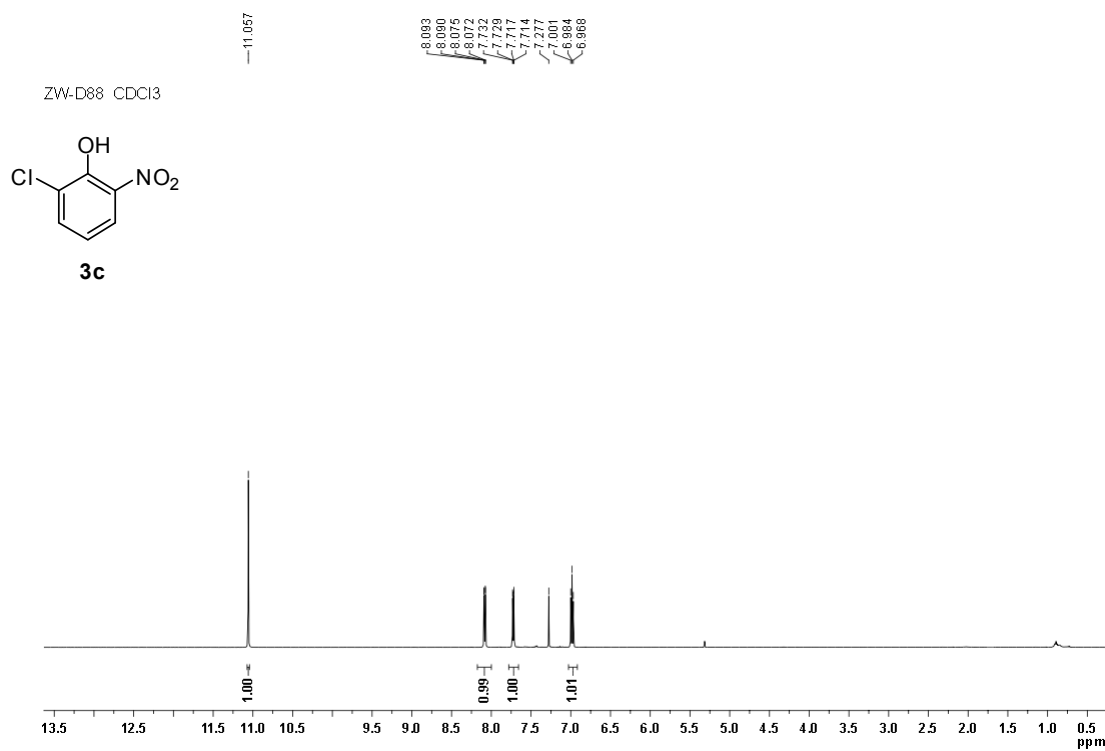


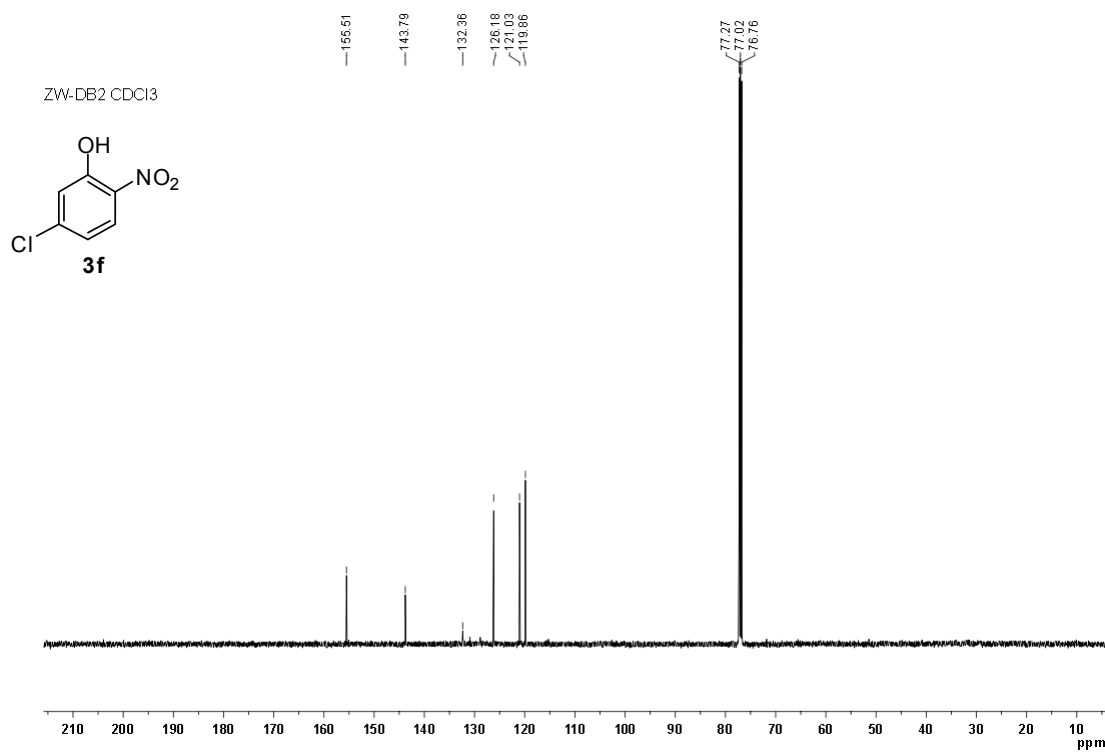
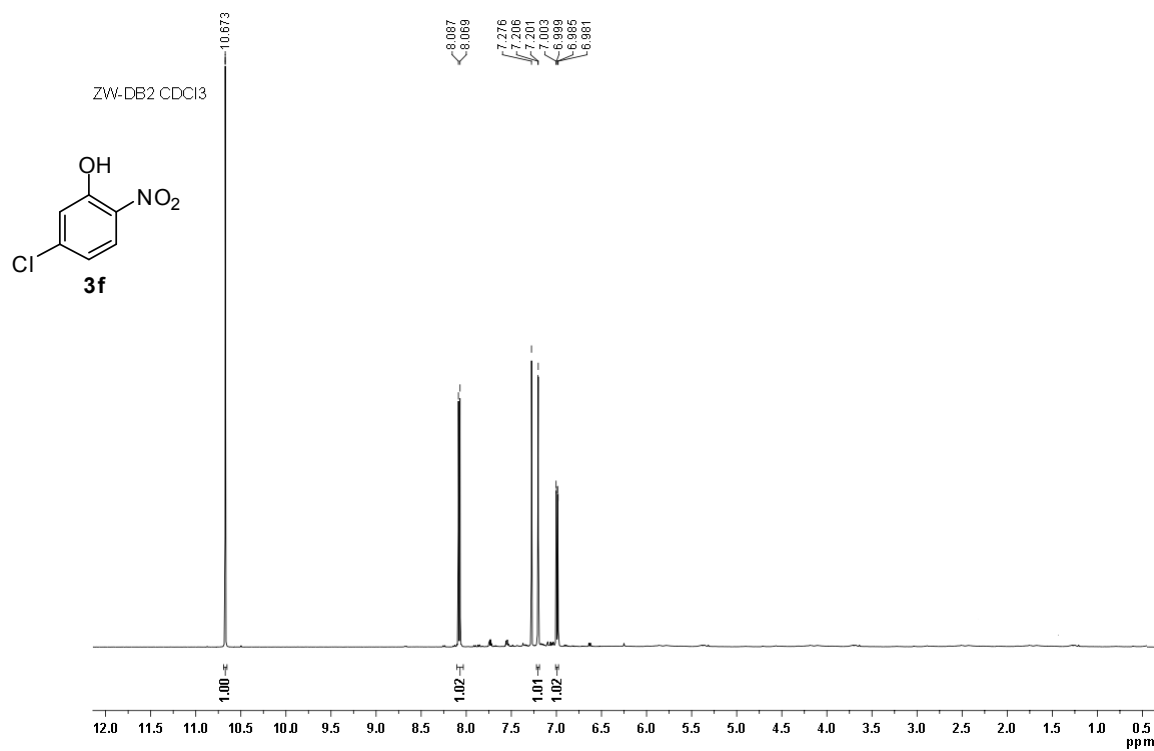


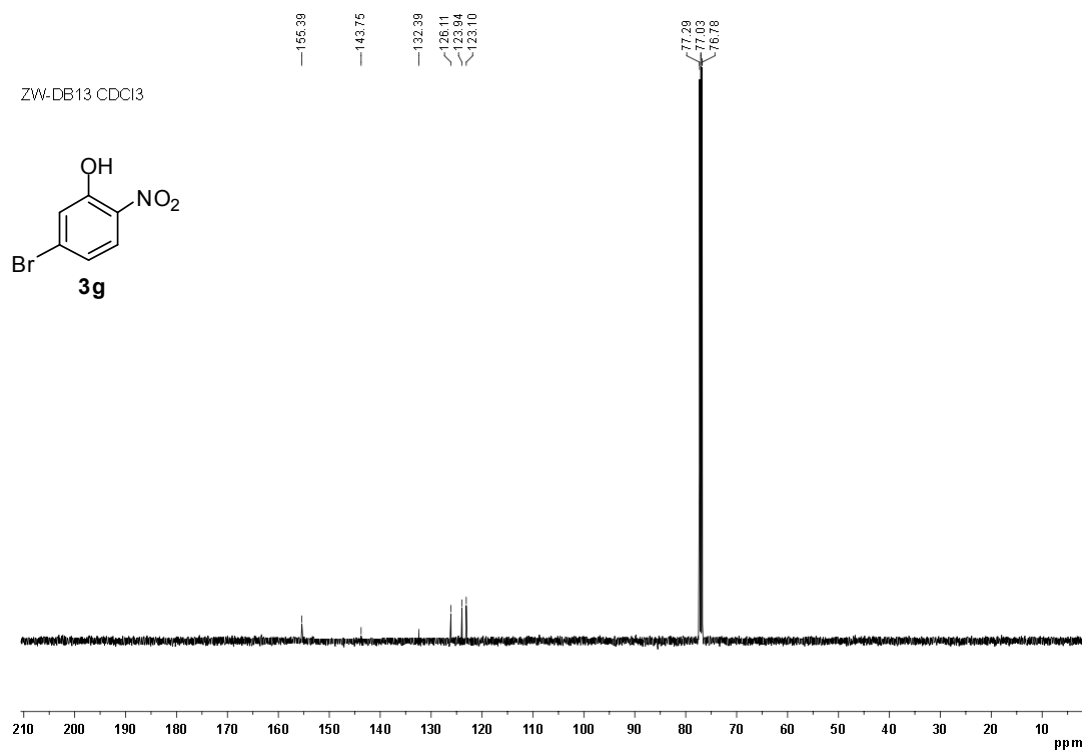
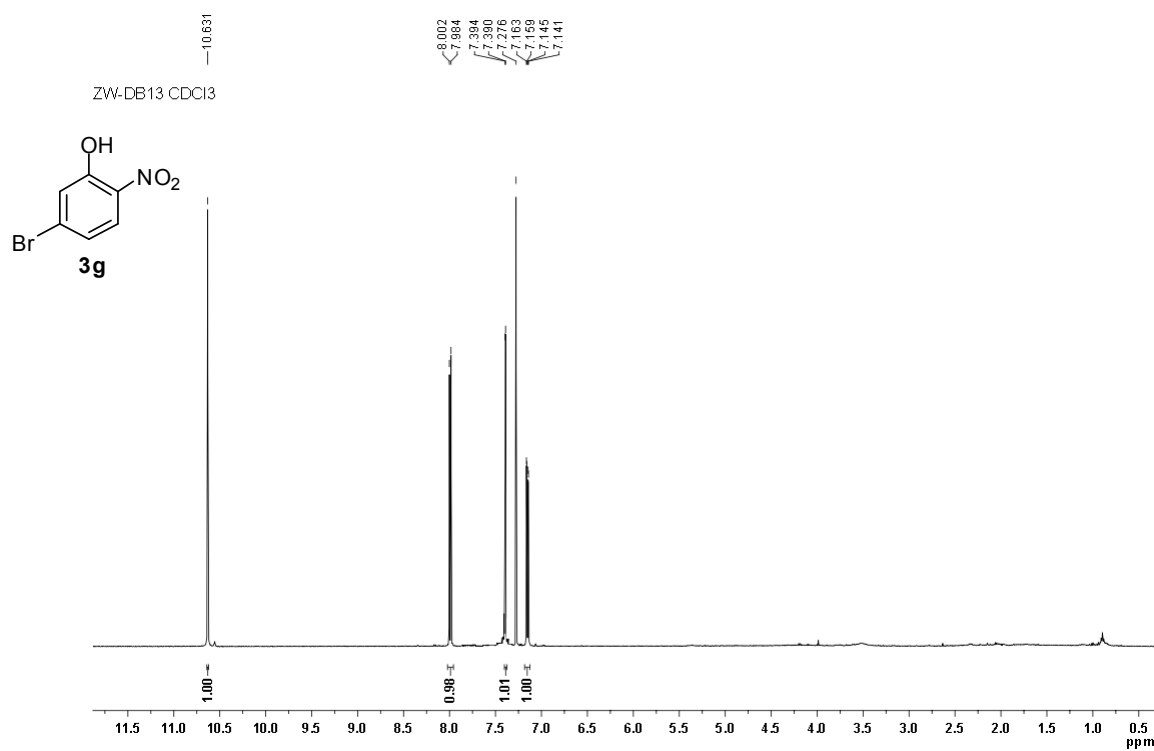


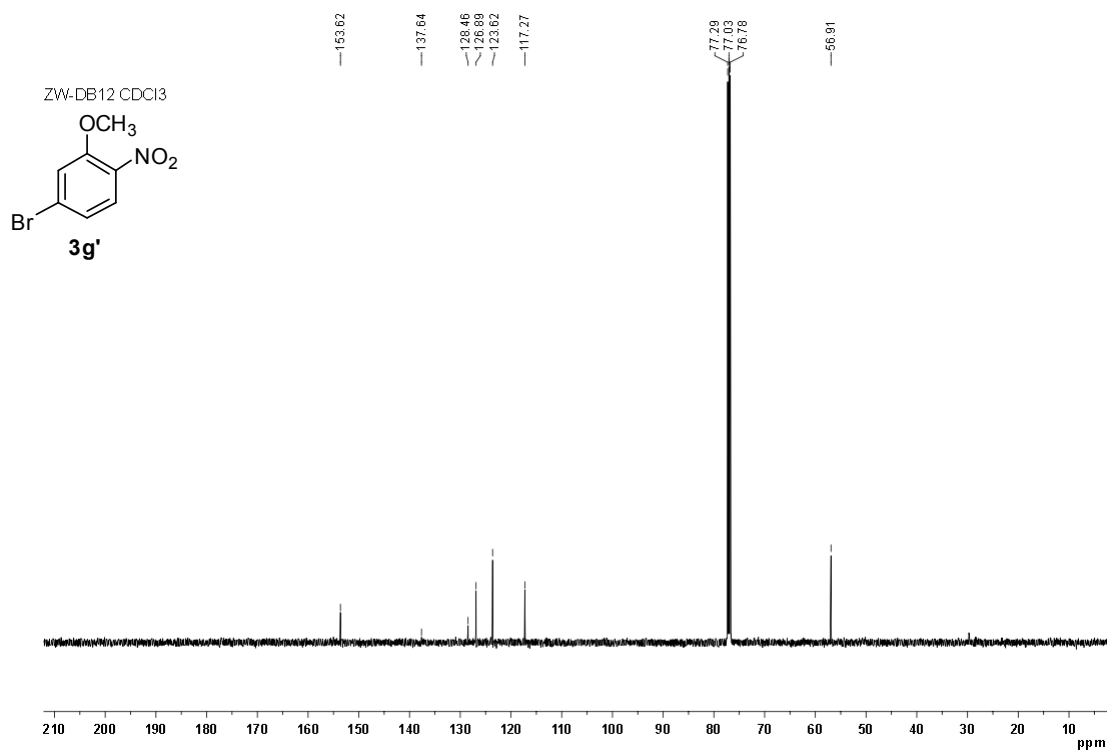
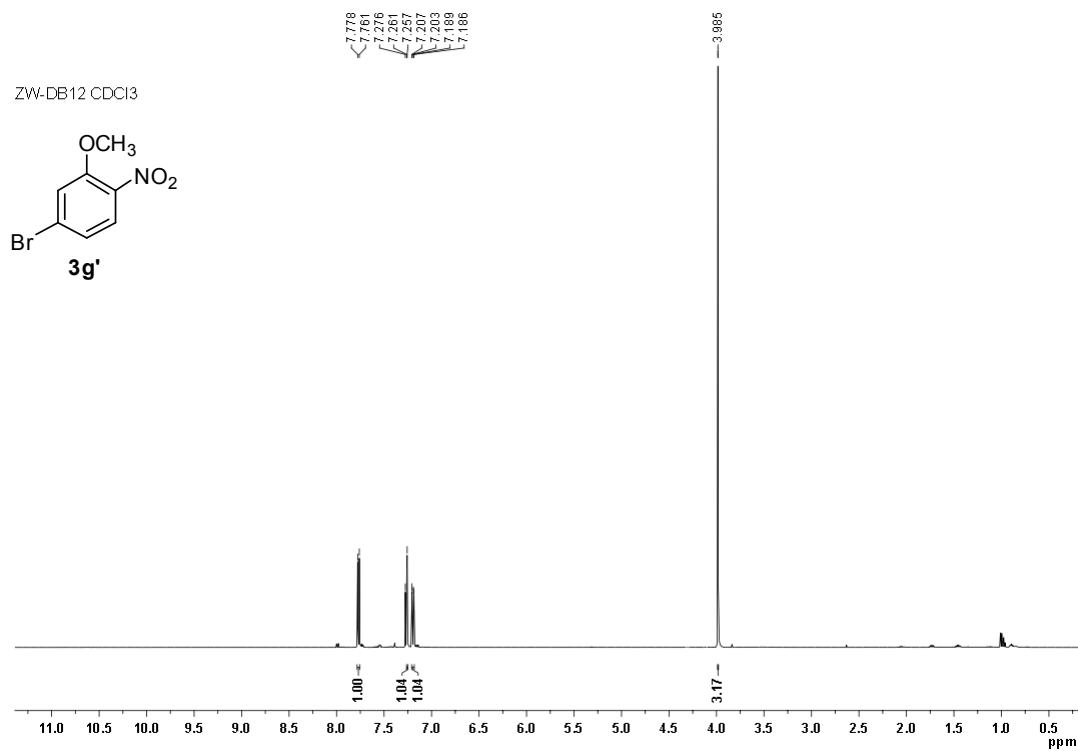


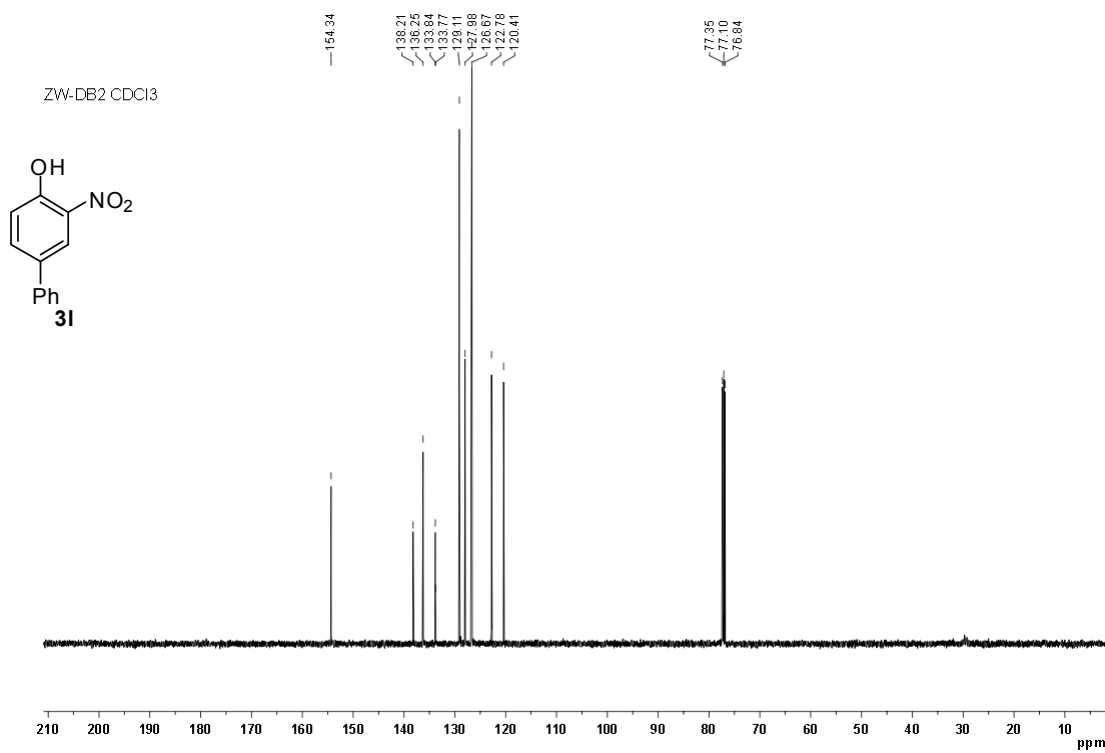
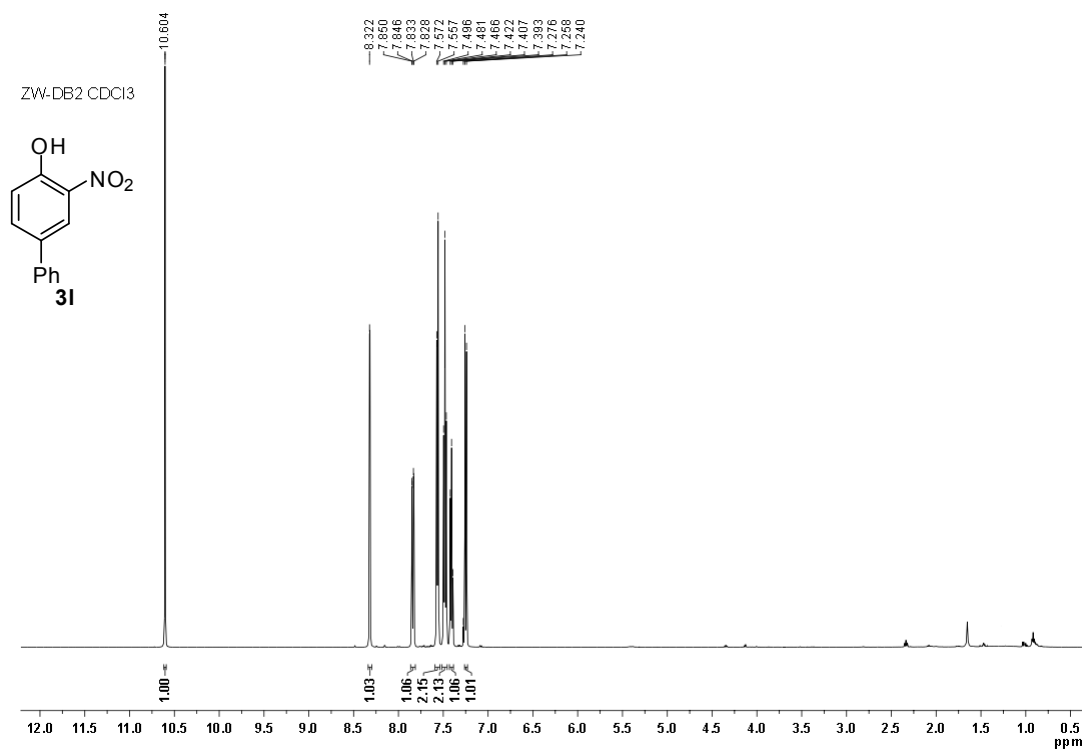


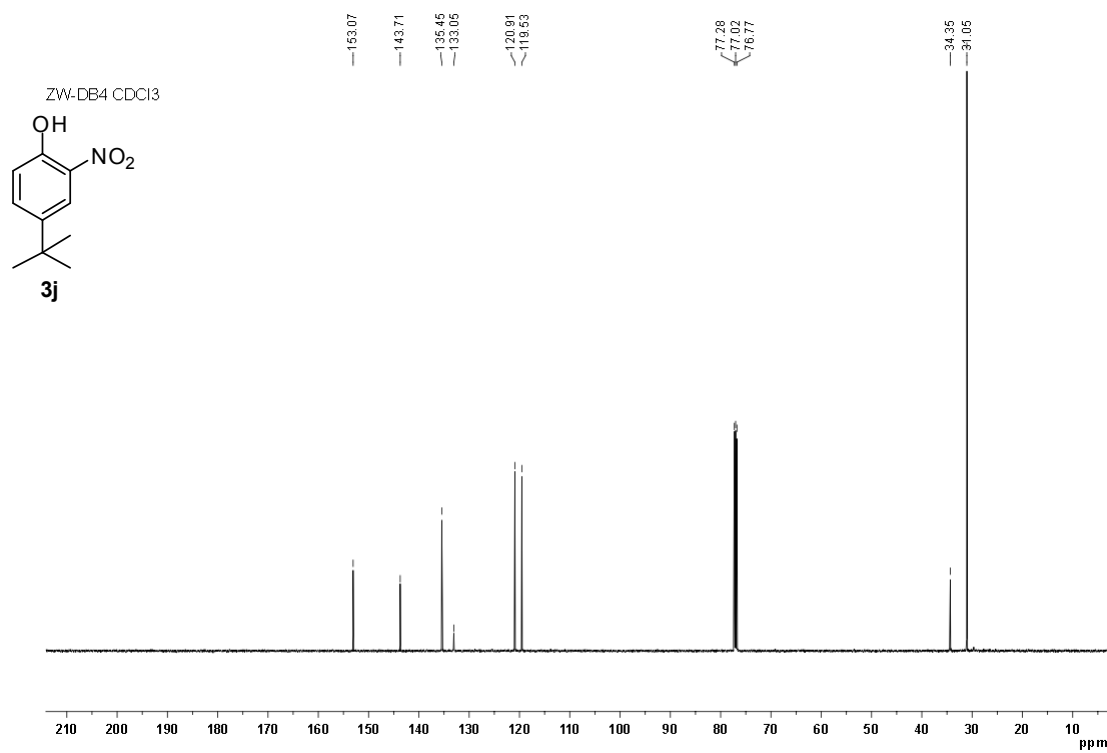
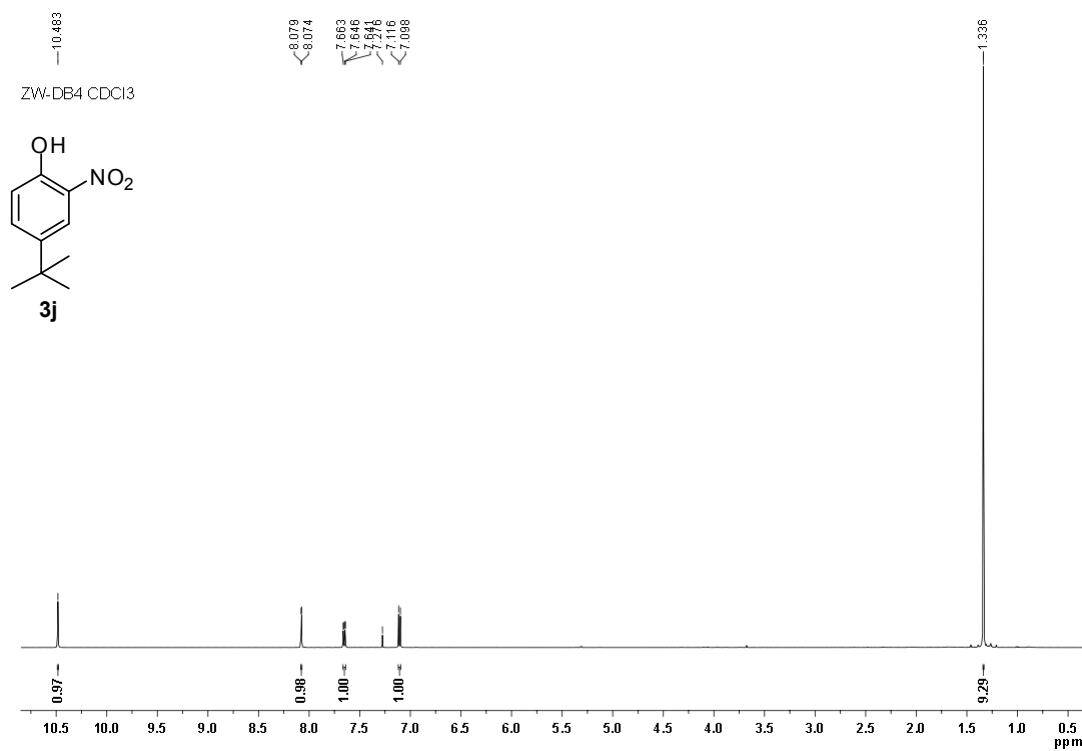


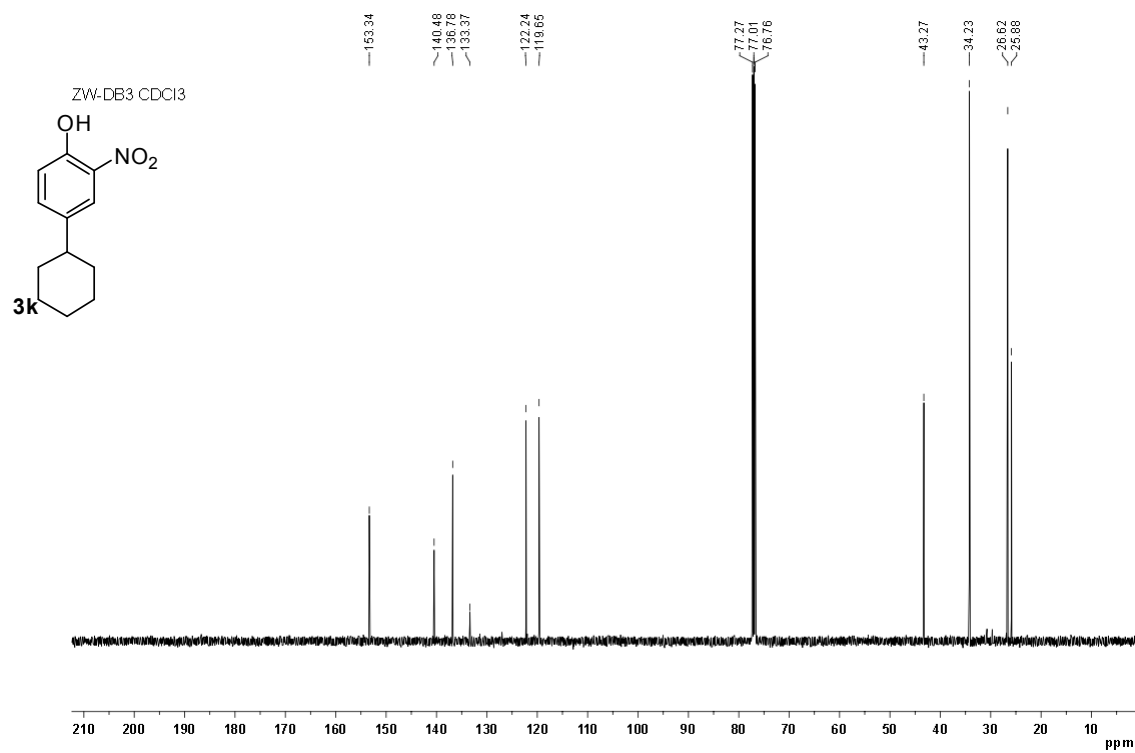
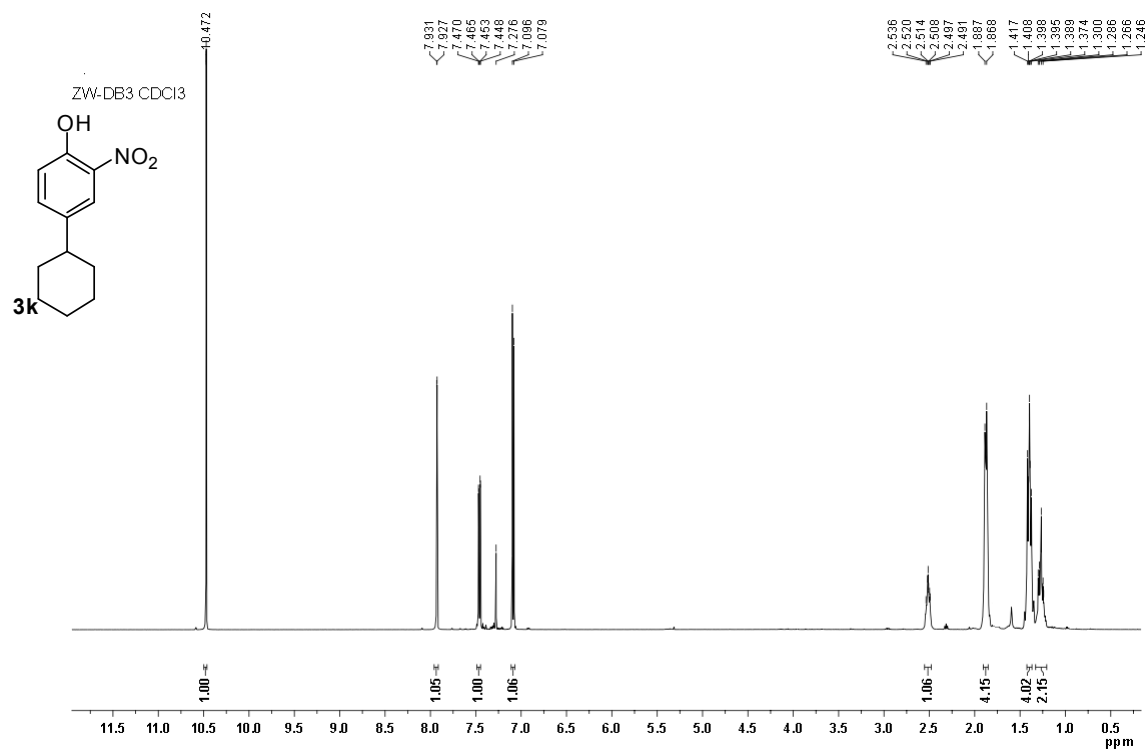


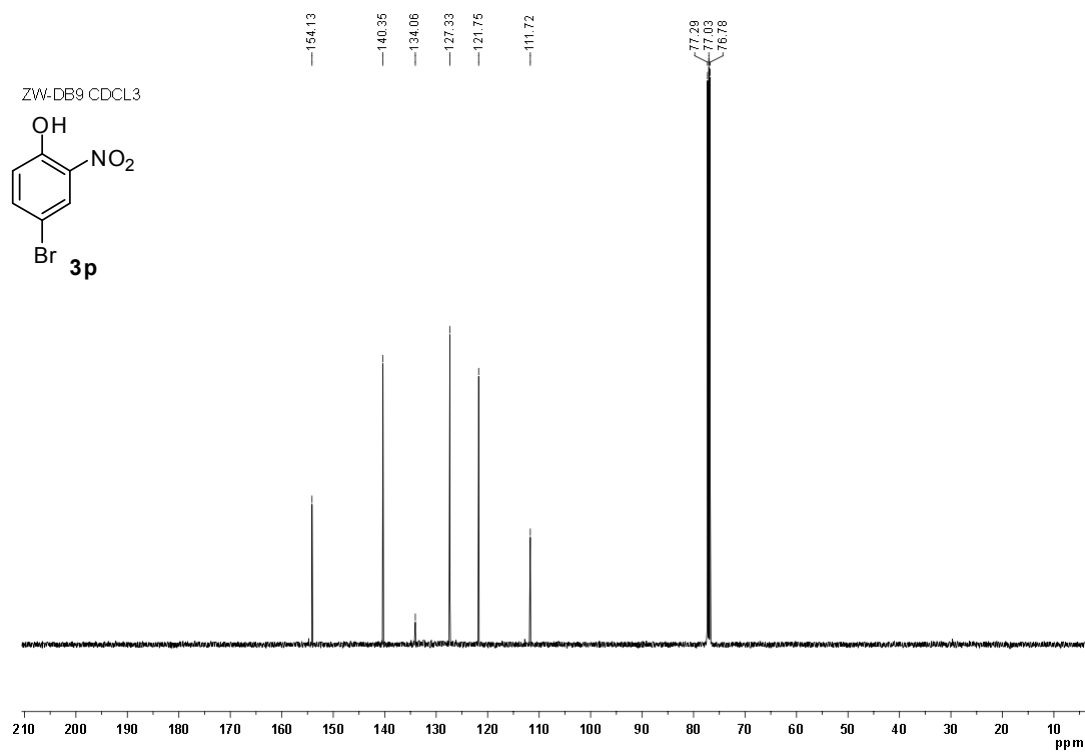
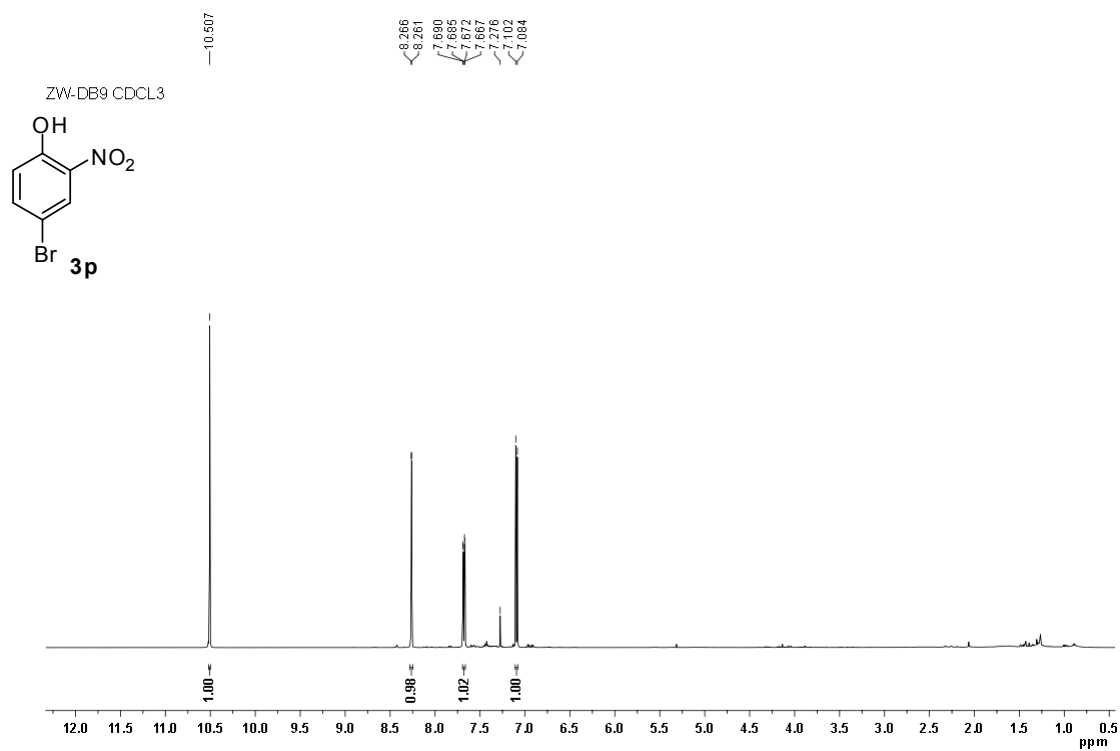


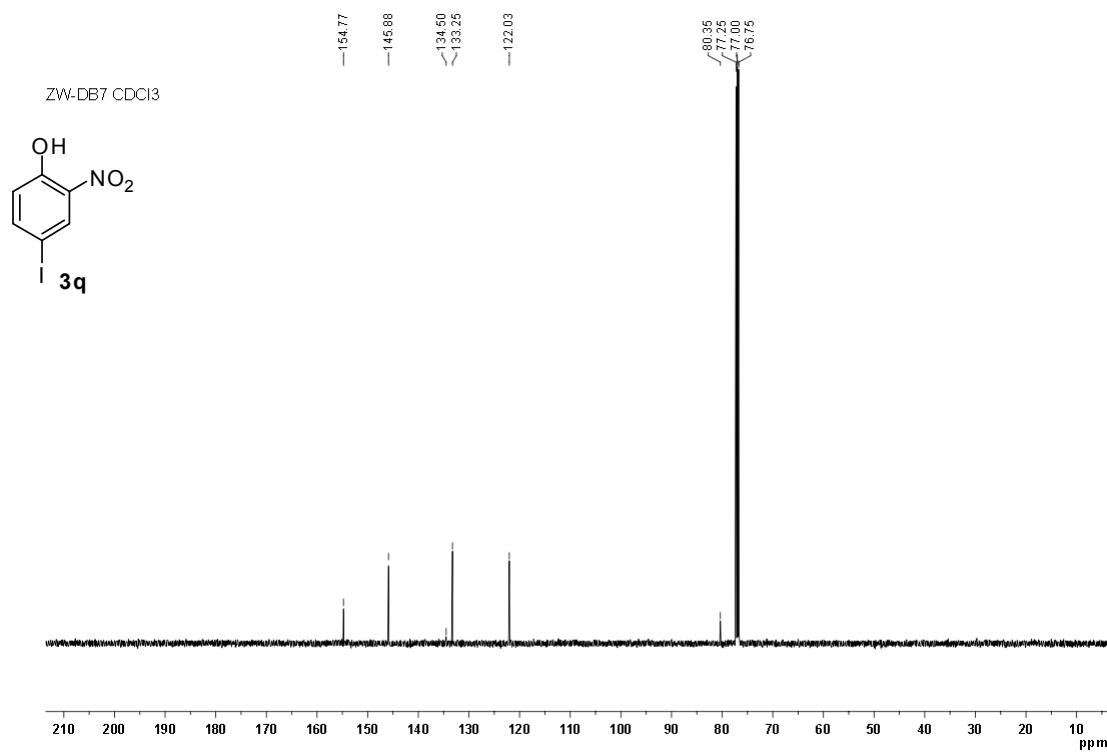
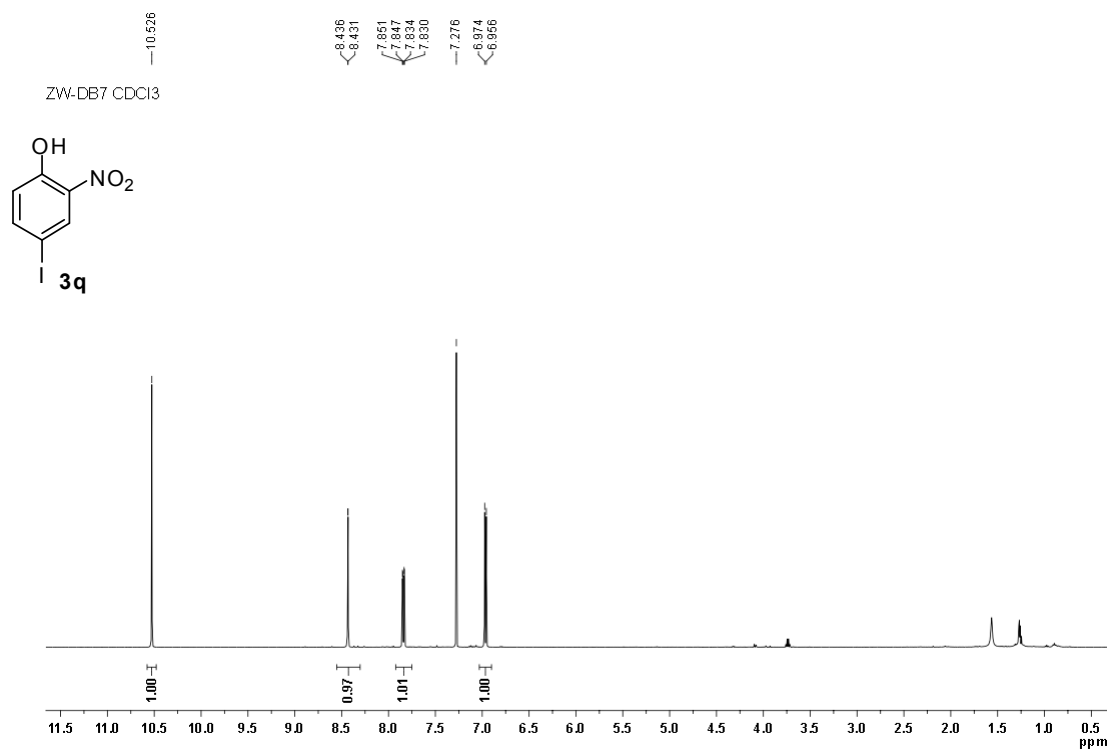


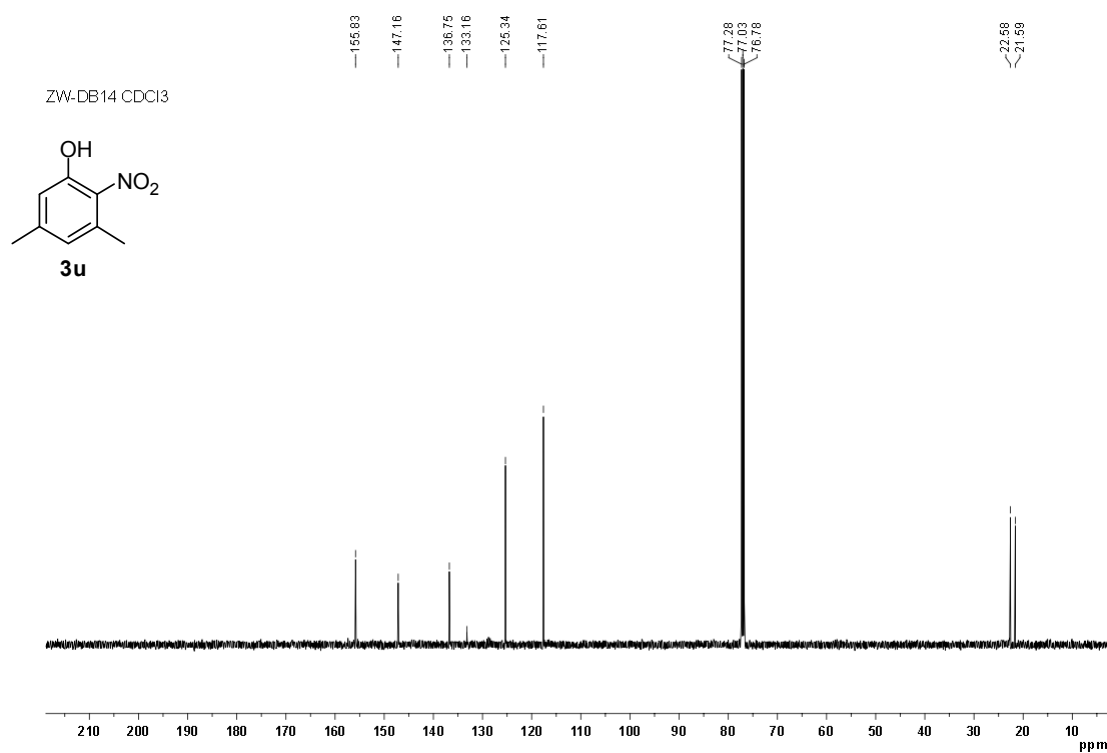
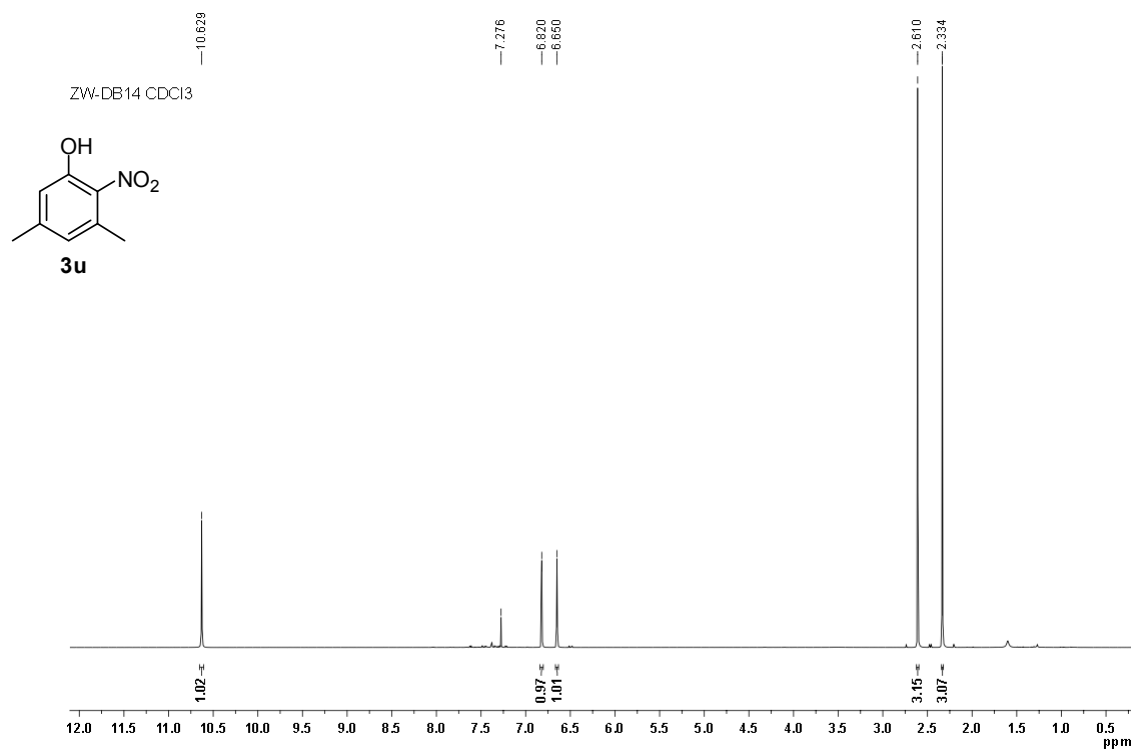




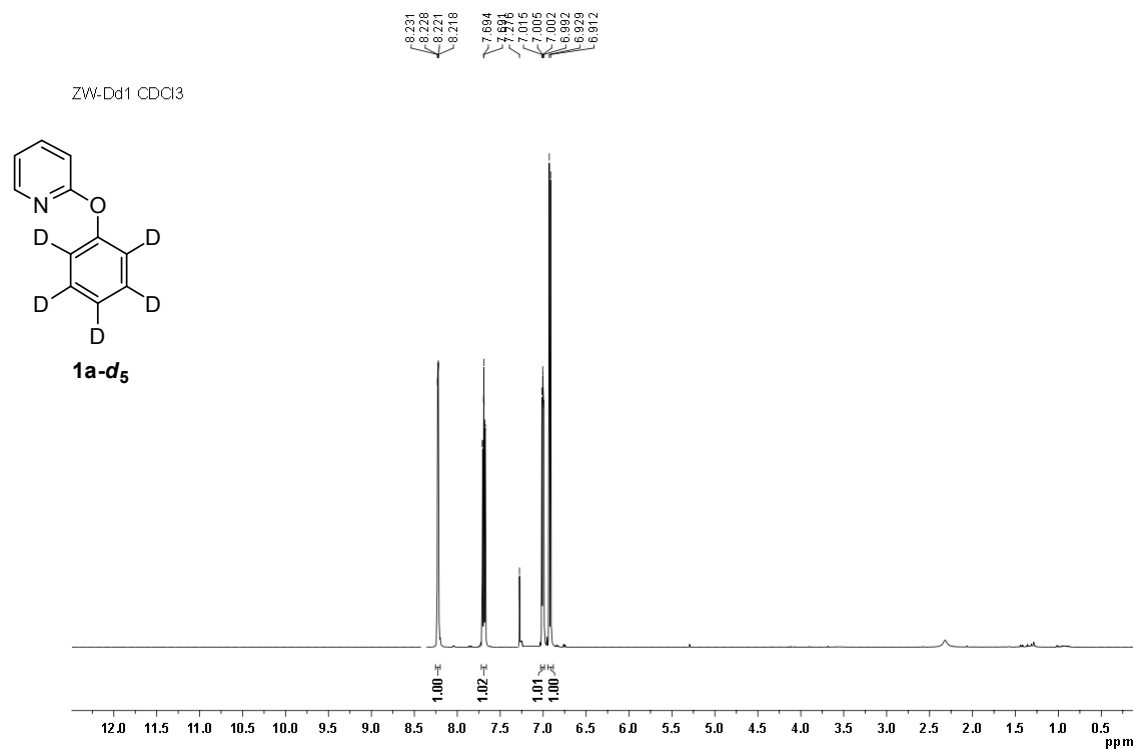








3. ¹H NMR Spectrum of 1a-*d*₅



4. ¹H NMR Spectrum of 2a and 2a-d₄ Mixture for KIE Calculation

