

Supporting Information

Investigation Regarding the Role of Chloride in Organic-Inorganic Halide Perovskites Obtained from Chloride Containing Precursors

*M. Ibrahim Dar,^{*a} Neha Arora,^a Peng Gao,^a Shahzada Ahmad,^b Michael Grätzel^{*a} and Mohammad Khaja Nazeeruddin^{*a}*

^aLaboratory of Photonics and Interfaces, Institute of Chemical Sciences and Engineering, Swiss Federal Institute of Technology (EPFL), Station 6, 1015 Lausanne, Switzerland

^bAbengoa Research, C/ Energía Solar n° 1, Campus Palmas Altas-41014, Sevilla, Spain

E-mail: mdkhaja.nazeeruddin@epfl.ch, michael.graetzel@epfl.ch, ibrahim.dar@epfl.ch; Fax: (+) 41-216936100

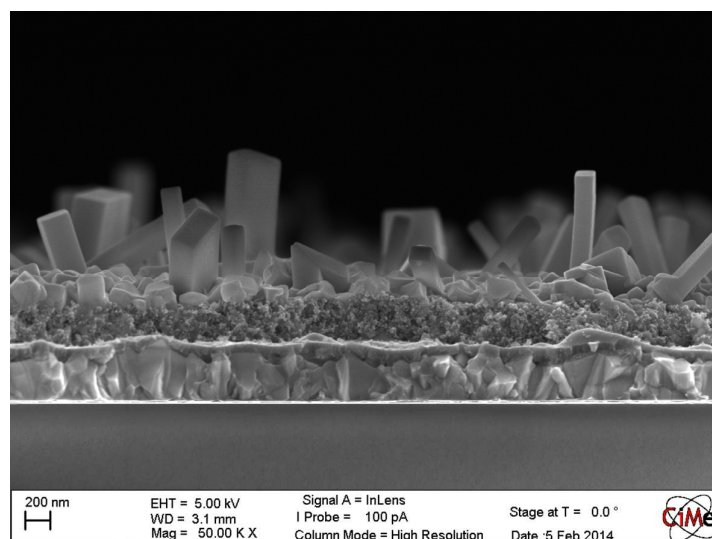


Figure S1. Cross-sectional SEM micrograph of **P1** sample.

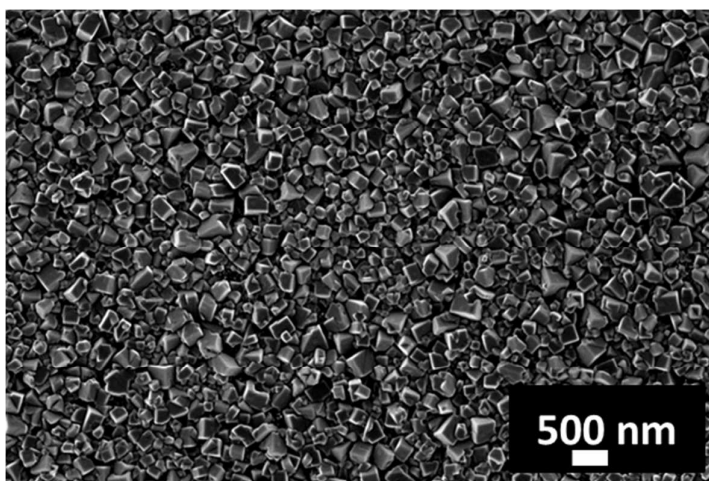


Figure S2. SEM image displaying the top view of $\text{CH}_3\text{NH}_3\text{PbI}_3$ structures of **P4** sample.

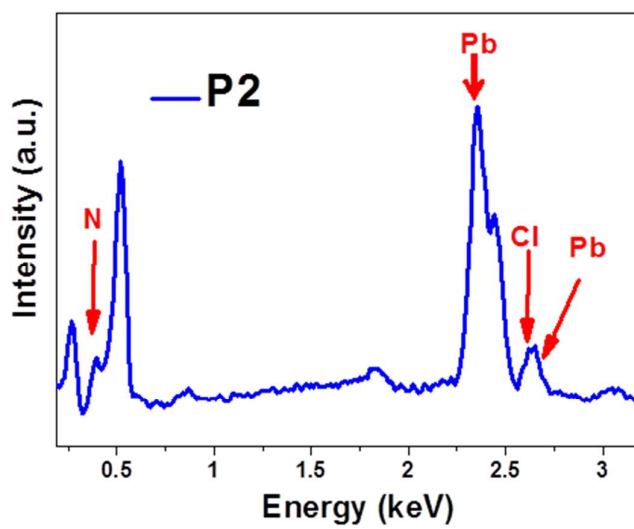


Figure S3. EDS spectrum of **P2** sample.

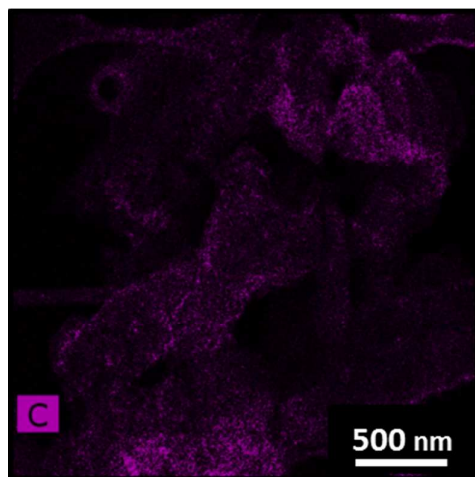


Figure S4. STEM-EDS analysis based C map of CH₃NH₃PbI₃ asymmetric crystals (**P2**).

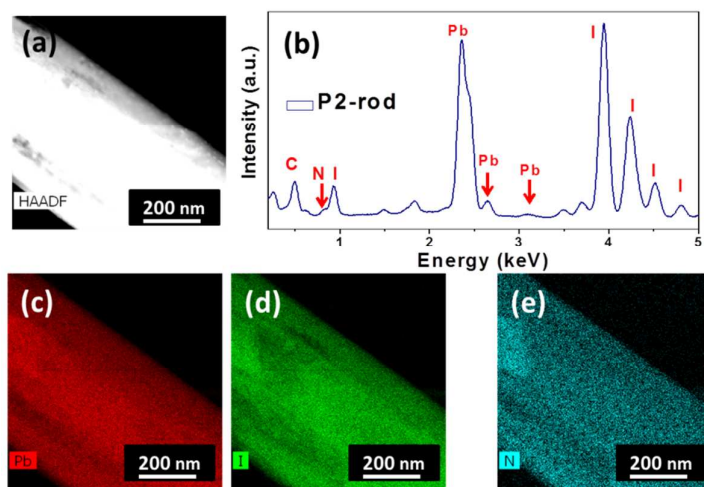


Figure S5. STEM-EDS analysis of **P2-rod**; (a) STEM-HAADF image, (b) STEM-EDS spectrum, (c) Pb map, (d) I map, and (e) N map.

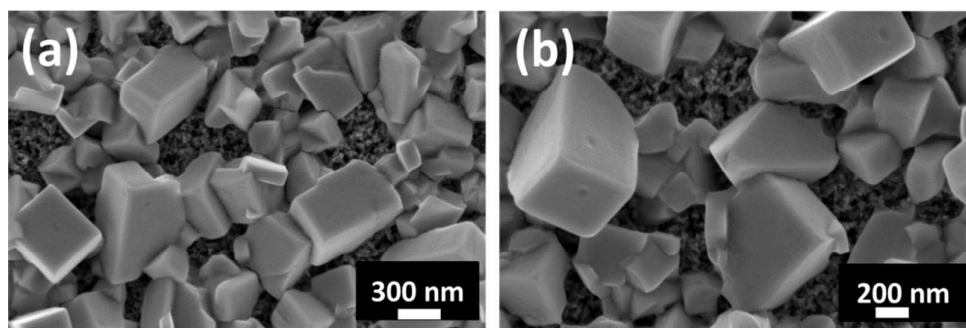


Figure S6. SEM image displaying the top view of $\text{CH}_3\text{NH}_3\text{PbI}_3$ structures obtained after dipping the PbI_2 film into a solution containing 8 mg/mL of MAI in 1 mL of IPA for 30 minutes.

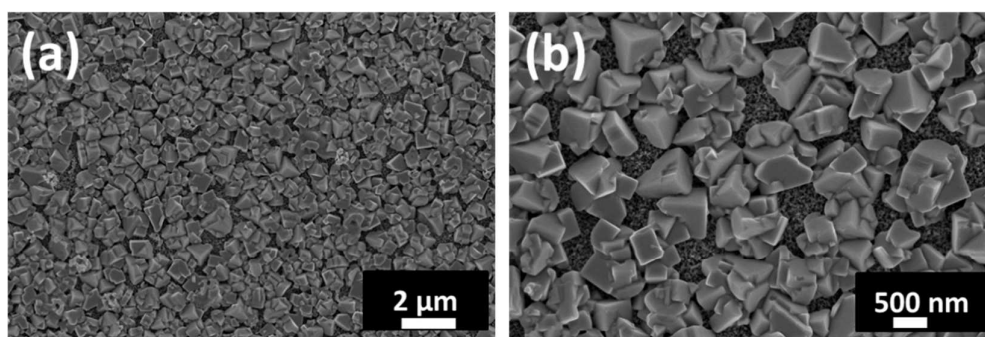


Figure S7. SEM image displaying the top view of $\text{CH}_3\text{NH}_3\text{PbI}_3$ structures obtained after dipping the PbI_2 film into a solution containing 7.6 mg of MAI in 1 mL of IPA for 4 minutes.