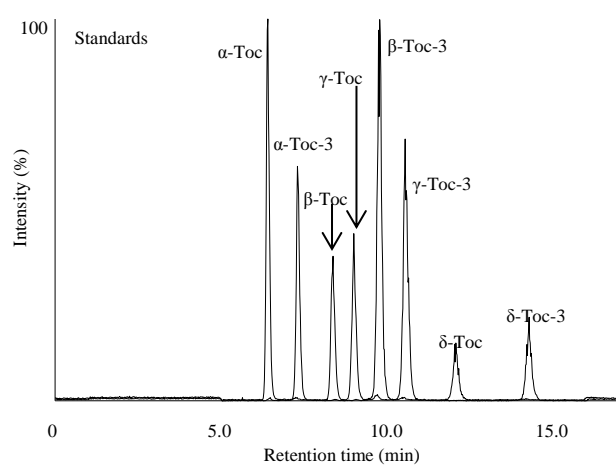


Supporting Information

Figure S1A and B. Typical MRM chromatograms of standard vitamin E homologues (A) and a rice bran extract (B).

Standard vitamin E (α -, β -, γ -, δ -Tocs and -Toc-3s) and a rice bran extract (Nipponbare (extract 1)) were analyzed by HPLC-MS/MS with MRM. Detailed analytical conditions are described in the MATERIALS AND METHODS section.

(A)



(B)

